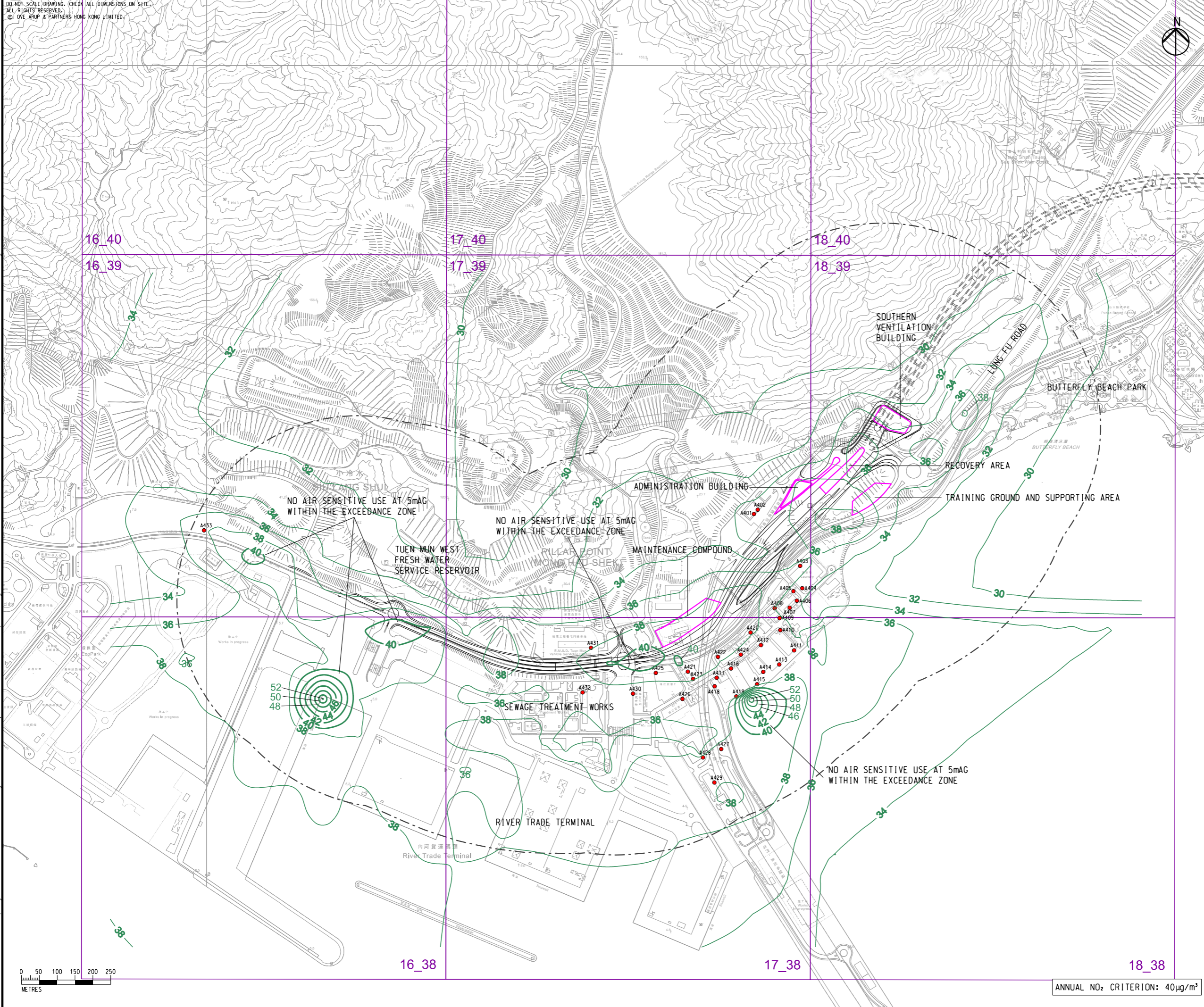


DO NOT SCALE DRAWING. CHECK ALL DIMENSIONS ON SITE.  
 ALL RIGHTS RESERVED.  
 © OVE ARUP & PARTNERS HONG KONG LIMITED.

- LEGEND**
- PORTAL AREA AND AT-GRADED ROAD/ ELEVATED ROAD
  - PROPOSED TUNNEL
  - HIGHWAY/ TUNNEL OPERATION AND MAINTENANCE FACILITIES
  - 500M OPERATIONAL ASSESSMENT AREA
  - CONCERNED PATH GRID
  - EXISTING REPRESENTATIVE AIR SENSITIVE RECEIVERS
  - NO<sub>2</sub> CONTOUR, µg/m<sup>3</sup>



C	THIRD ISSUE	GL	09/23
B	SECOND ISSUE	GL	08/23
A	FIRST ISSUE	GL	06/23
Rev	Description	By	Date

Consultant  
**ARUP**

Project title  
 Agreement No. CE 65/2021(HY)  
 Tuén Mun Bypass - Investigation

Drawing title  
**CONTOURS OF CUMULATIVE ANNUAL NO<sub>2</sub> CONCENTRATION AT 5m ABOVE GROUND (YEAR 2048) IN PILLAR POINT**

Drawing no.		Rev.	
FIGURE 3.7c		C	
Drawn	Date	Checked	Approved
GL	09/23	TL	FC
Scale	Status		PRELIMINARY
1:10000 @ A3			

COPYRIGHT RESERVED

路政署  
 HIGHWAYS DEPARTMENT

Printed by : 7/9/2023  
 Filename : G:\env\project\287168-25\13 Drawing Deliverables\report\REP-XXX EIA Report\Figure 3.7c - Contours of Cumulative Annual NO2 (Year 2048) in Pillar Point\_5m.dgn

ANNUAL NO<sub>2</sub> CRITERION: 40 µg/m<sup>3</sup>