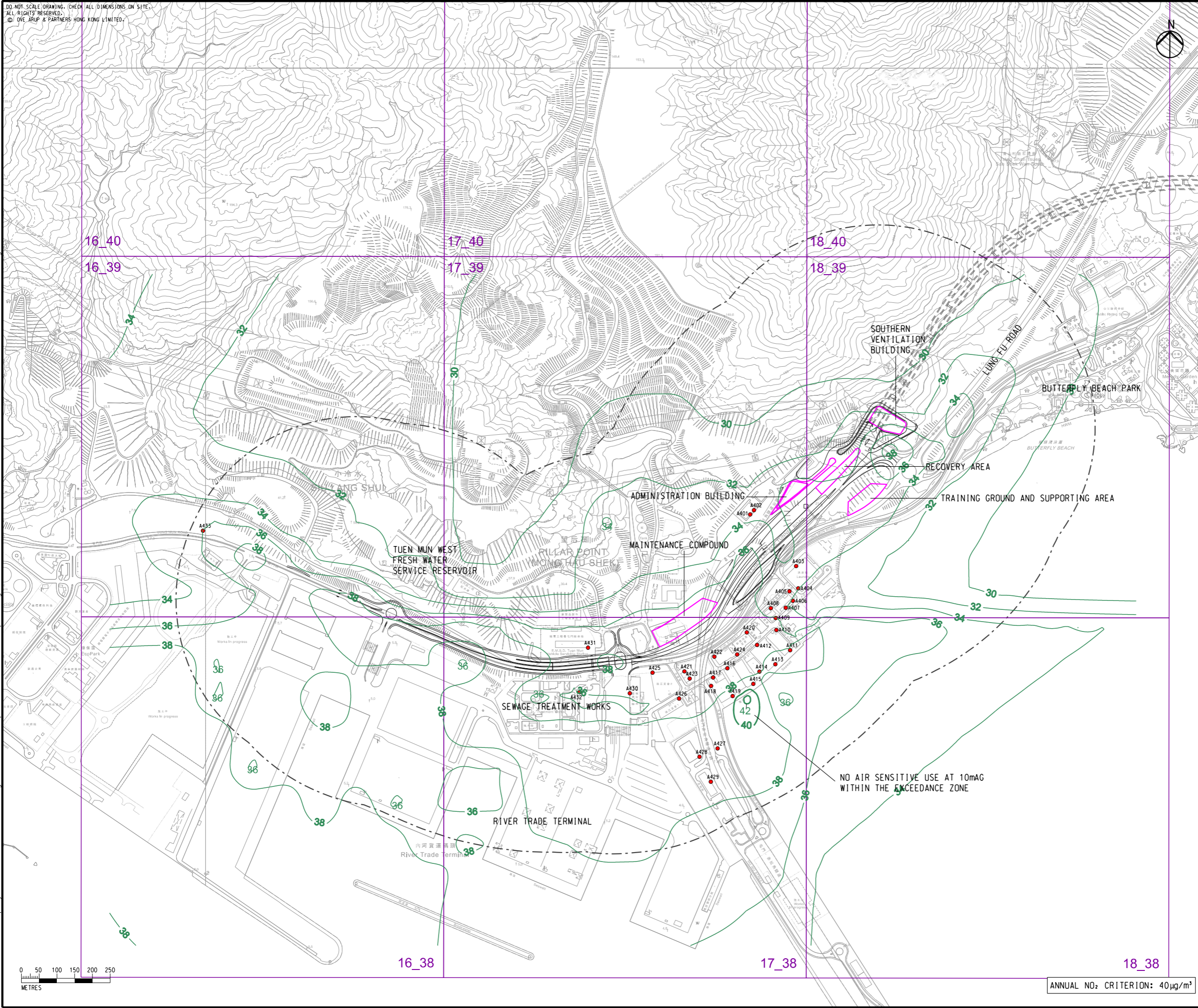


DO NOT SCALE DRAWING. CHECK ALL DIMENSIONS ON SITE.
 ALL RIGHTS RESERVED.
 © OVE ARUP & PARTNERS HONG KONG LIMITED.

Printed by : 7/9/2023
 Filename : G:\env\project\287168-25\13 Drawing Deliverables\report\REP-XXX EIA Report\Figure 3.7d - Contours of Cumulative Annual NO2 (Year 2048) in Pillar Point_10m.dgn



- LEGEND**
- PORTAL AREA AND AT-GRADED ROAD/ ELEVATED ROAD
 - PROPOSED TUNNEL
 - HIGHWAY/ TUNNEL OPERATION AND MAINTENANCE FACILITIES
 - 500M OPERATIONAL ASSESSMENT AREA
 - 22.44 CONCERNED PATH GRID
 - EXISTING REPRESENTATIVE AIR SENSITIVE RECEIVERS
 - 40 NO₂ CONTOUR, µg/m³

C	THIRD ISSUE	GL	09/23
B	SECOND ISSUE	GL	08/23
A	FIRST ISSUE	GL	06/23
Rev	Description	By	Date

Consultant
ARUP

Project title
 Agreement No. CE 65/2021(HY)
 Tuén Mun Bypass - Investigation

Drawing title
CONTOURS OF CUMULATIVE ANNUAL NO₂ CONCENTRATION AT 10m ABOVE GROUND (YEAR 2048) IN PILLAR POINT

Drawing no.		Rev.	
FIGURE 3.7d		C	
Drawn	Date	Checked	Approved
GL	09/23	TL	FC
Scale	Status		PRELIMINARY
1:10000 @ A3			

COPYRIGHT RESERVED

路政署
 HIGHWAYS DEPARTMENT

ANNUAL NO₂ CRITERION: 40 µg/m³