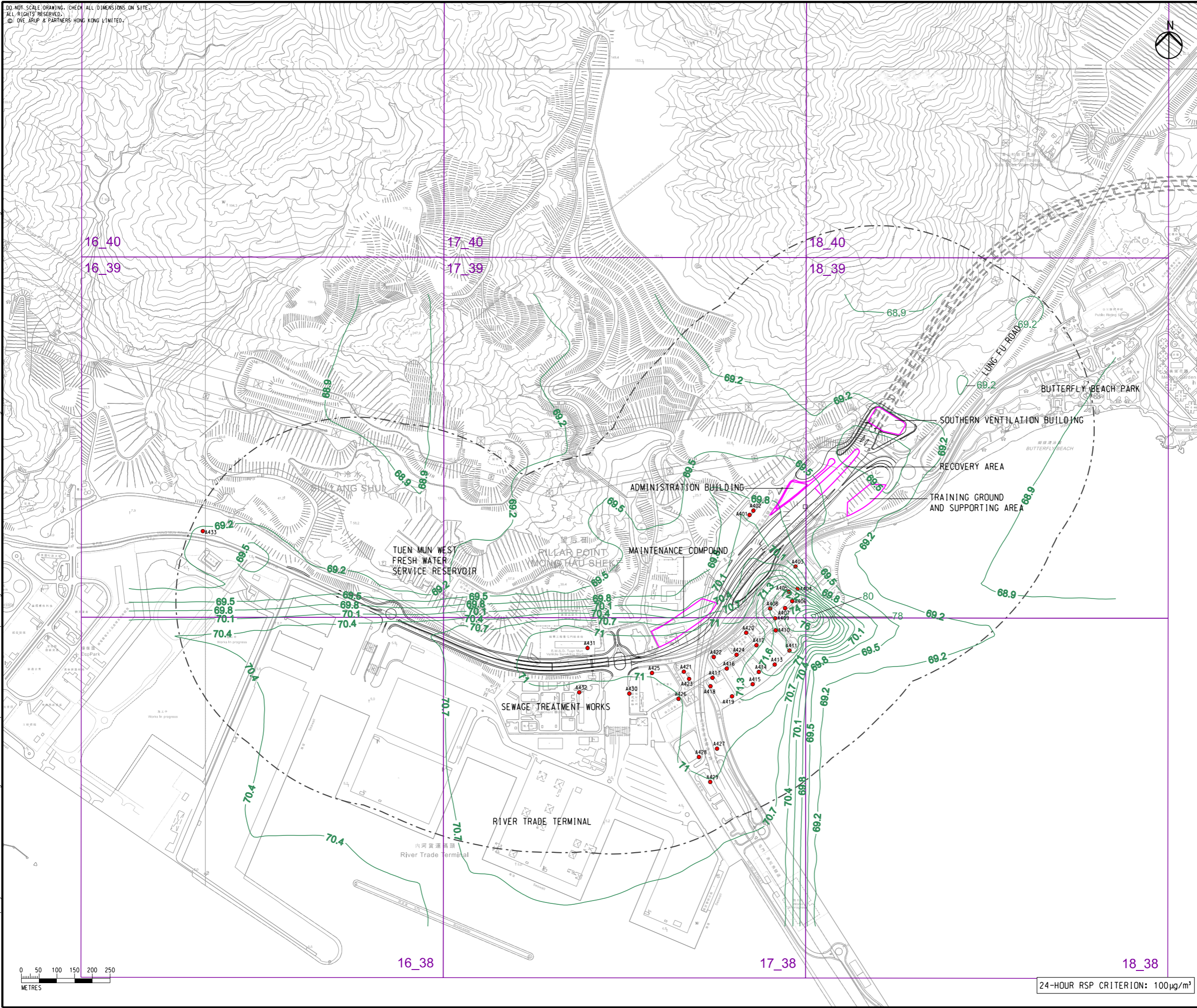


DO NOT SCALE DRAWING. CHECK ALL DIMENSIONS ON SITE.  
 ALL RIGHTS RESERVED.  
 © OVE ARUP & PARTNERS HONG KONG LIMITED.

Printed by : 23/8/2023  
 Filename : G:\env\project\287168-25\13 Drawing Deliverables\report\REP-XXX EIA Report\Figure 3.8b - Contours of Cumulative 10th highest 24-hour RSP (Year 2048) in Pillar Point.dgn



- LEGEND**
- PORTAL AREA AND AT-GRADED ROAD/ ELEVATED ROAD
  - PROPOSED TUNNEL
  - HIGHWAY/ TUNNEL OPERATION AND MAINTENANCE FACILITIES
  - 500M OPERATIONAL ASSESSMENT AREA
  - CONCERNED PATH GRID
  - EXISTING REPRESENTATIVE AIR SENSITIVE RECEIVERS
  - RSP CONTOUR,  $\mu\text{g}/\text{m}^3$

Rev	Description	By	Date
C	THIRD ISSUE	GL	08/23
B	SECOND ISSUE	GL	07/23
A	FIRST ISSUE	GL	06/23

Consultant  
**ARUP**

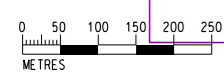
Project title  
 Agreement No. CE 65/2021(HY)  
 Tuén Mun Bypass - Investigation

Drawing title  
**CONTOURS OF CUMULATIVE  
 10th HIGHEST 24-HOUR RSP  
 CONCERNTRATION AT 1.5m  
 ABOVE GROUND (YEAR 2048)  
 IN PILLAR POINT**

Drawing no.		Rev.	
FIGURE 3.8b		C	
Drawn	Date	Checked	Approved
GL	08/23	TL	FC
Scale	Status		PRELIMINARY
1:10000 @ A3			

COPYRIGHT RESERVED

路政署  
 HIGHWAYS DEPARTMENT



24-HOUR RSP CRITERION:  $100 \mu\text{g}/\text{m}^3$