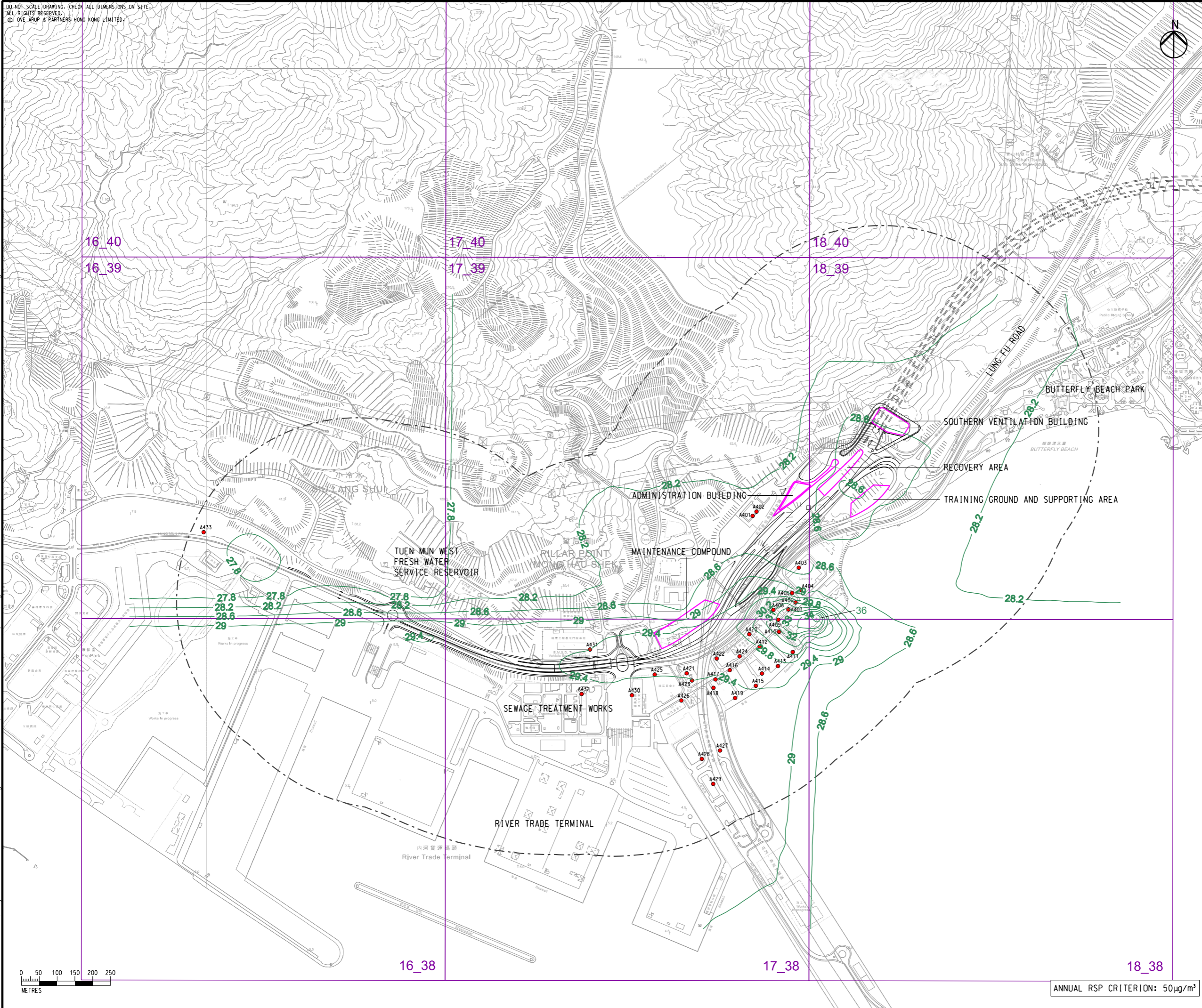


DO NOT SCALE DRAWING. CHECK ALL DIMENSIONS ON SITE.
ALL RIGHTS RESERVED.
© OVE ARUP & PARTNERS HONG KONG LIMITED.

- LEGEND**
- PORTAL AREA AND AT-GRADED ROAD/ ELEVATED ROAD
 - PROPOSED TUNNEL
 - HIGHWAY/ TUNNEL OPERATION AND MAINTENANCE FACILITIES
 - 500M OPERATIONAL ASSESSMENT AREA
 - CONCERNED PATH GRID
 - EXISTING REPRESENTATIVE AIR SENSITIVE RECEIVERS
 - RSP CONTOUR, $\mu\text{g}/\text{m}^3$

Printed by : 23/8/2023
Filename : G:\env\project\287168-25\13 Drawing Deliverables\report\REP-XXX EIA Report\Figure 3.9b - Contours of Cumulative Annual RSP (Year 2048) in Pillar Point.dgn



Rev	Description	By	Date
B	SECOND ISSUE	GL	08/23
A	FIRST ISSUE	GL	06/23

Consultant
ARUP

Project title
Agreement No. CE 65/2021(HY)
Tuén Mun Bypass - Investigation

Drawing title
CONTOURS OF CUMULATIVE ANNUAL RSP CONCERNTRATION AT 1.5m ABOVE GROUND (YEAR 2048) IN PILLAR POINT

Drawing no.		Rev.	
FIGURE 3.9b		B	
Drawn	Date	Checked	Approved
GL	08/23	TL	FC
Scale	Status		PRELIMINARY
1:10000 @ A3			

COPYRIGHT RESERVED

路政署
HIGHWAYS DEPARTMENT

ANNUAL RSP CRITERION: $50 \mu\text{g}/\text{m}^3$