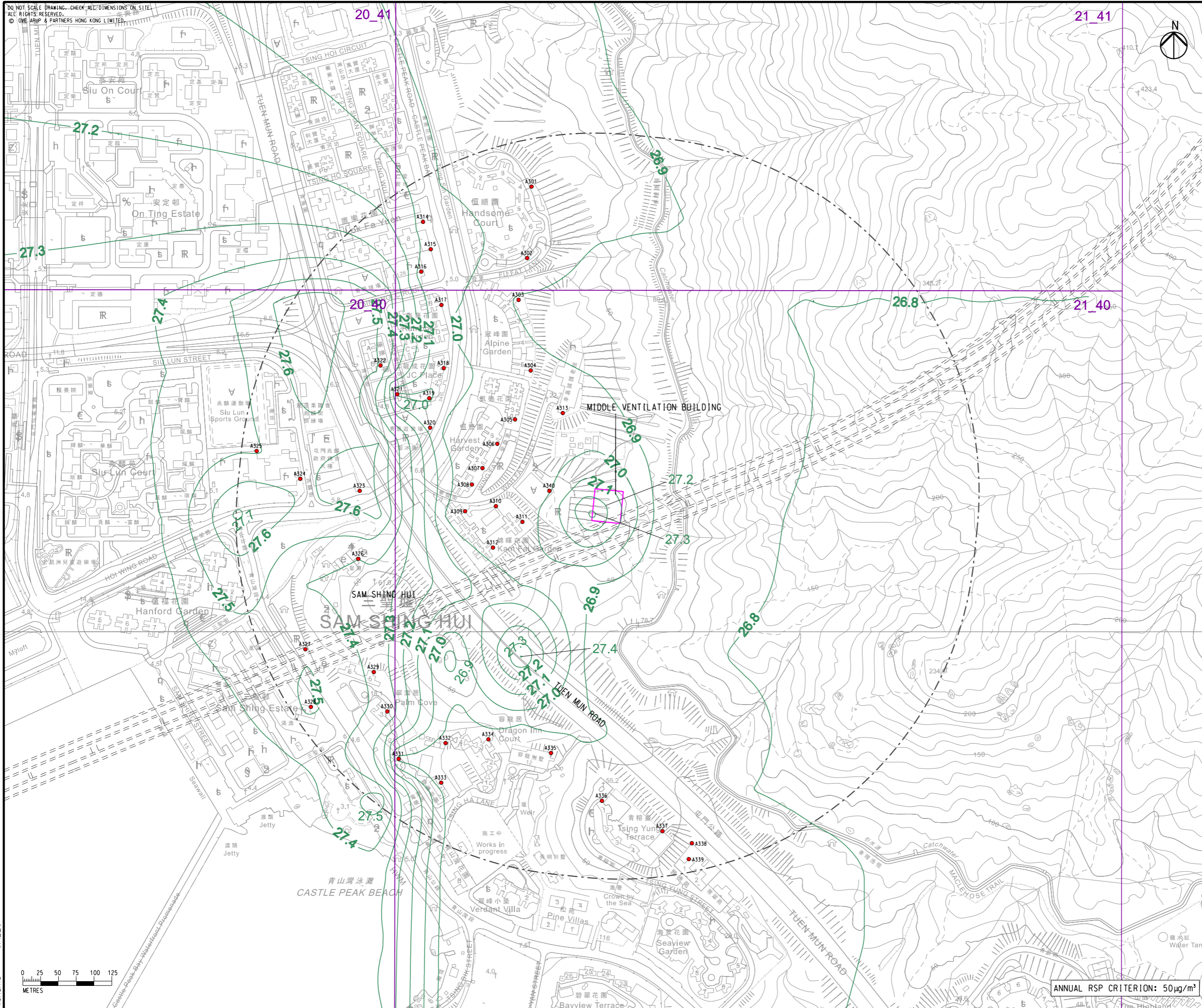


DO NOT SCALE DRAWING. CHECK ALL DIMENSIONS ON SITE.
ALL RIGHTS RESERVED.
© OVE ARUP & PARTNERS HONG KONG LIMITED



- LEGEND**
- PORTAL AREA AND AT-GRADED ROAD/ ELEVATED ROAD
 - PROPOSED TUNNEL
 - HIGHWAY/ TUNNEL OPERATION AND MAINTENANCE FACILITIES
 - 500M OPERATIONAL ASSESSMENT AREA
 - CONCERNED PATH GRID
 - EXISTING REPRESENTATIVE AIR SENSITIVE RECEIVERS
 - RSP CONTOUR, $\mu\text{g}/\text{m}^3$

C	THIRD ISSUE	GL	08/23
B	SECOND ISSUE	GL	07/23
A	FIRST ISSUE	GL	06/23
Rev	Description	By	Date

Consultant
ARUP

Project title
Agreement No. CE 65/2021(HY)
Tuen Mun Bypass - Investigation

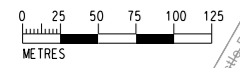
Drawing title
CONTOURS OF CUMULATIVE ANNUAL RSP CONCENTRATION AT 1.5m ABOVE GROUND (YEAR 2048) IN SAM SHING

Drawing no. FIGURE 3.9c		Rev. C	
Drawn GL	Date 08/23	Checked TL	Approved FC
Scale 1:5000 @ A3		Status PRELIMINARY	

COPYRIGHT RESERVED

路政署
HIGHWAYS DEPARTMENT

Printed by : \$DATES\$
Filename : \$FILES\$



ANNUAL RSP CRITERION: $50\mu\text{g}/\text{m}^3$