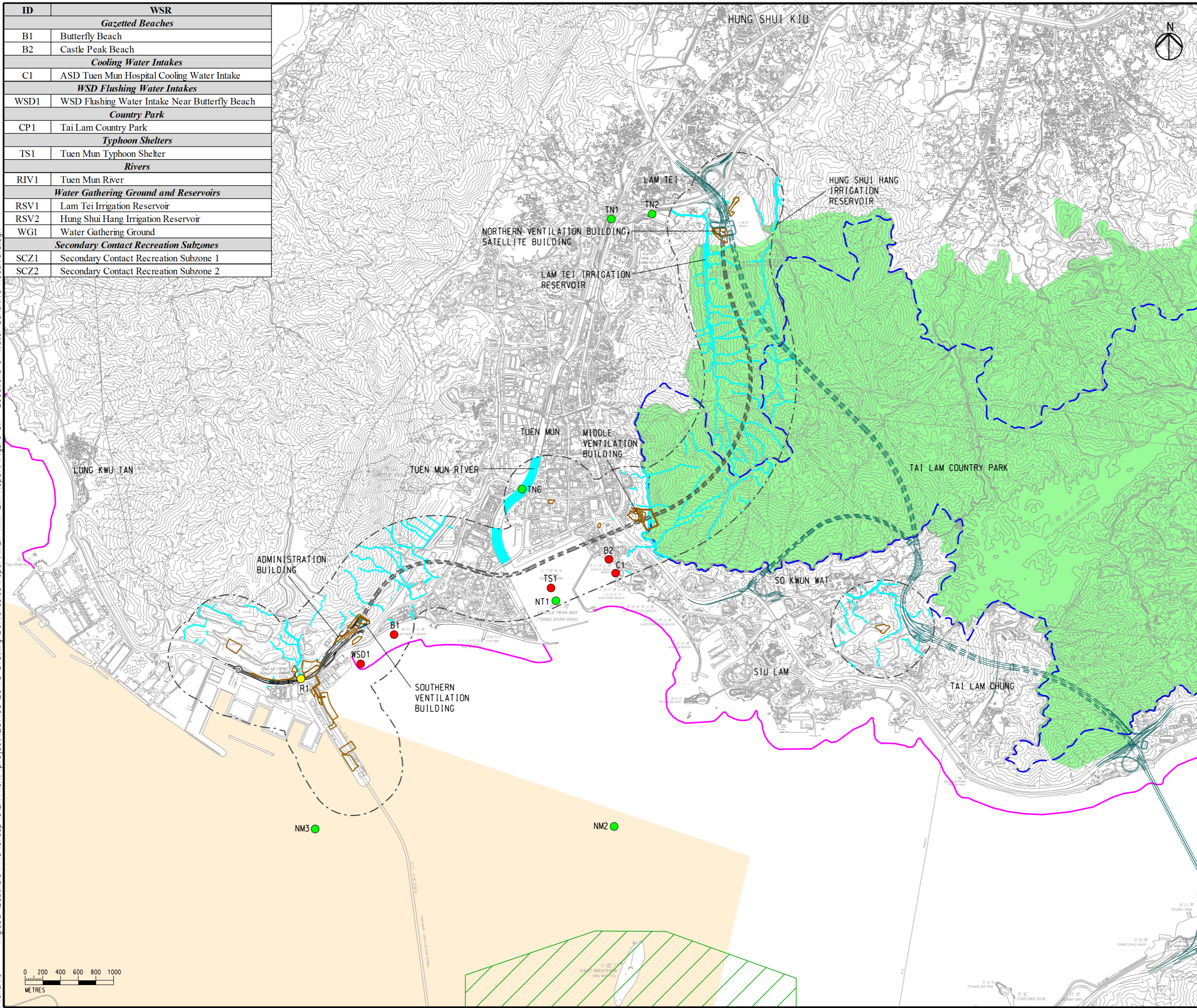


Printed by : 7/11/2023  
 Filename : \\global\EastAsia\HKG\Group\CI\ENV\env\project\287168-25\13 Drawing Deliverables\report\REP-XXX EIA Report\Figure 5.1 - Locations of Water Sensitive Receivers.dgn

ID	WSR
<b>Gazetted Beaches</b>	
B1	Butterfly Beach
B2	Castle Peak Beach
<b>Cooling Water Intakes</b>	
C1	ASD Tuen Mun Hospital Cooling Water Intake
<b>WSD Flushing Water Intakes</b>	
WSD1	WSD Flushing Water Intake Near Butterfly Beach
<b>Country Park</b>	
CP1	Tai Lam Country Park
<b>Typhoon Shelters</b>	
TS1	Tuen Mun Typhoon Shelter
<b>Rivers</b>	
RIV1	Tuen Mun River
<b>Water Gathering Ground and Reservoirs</b>	
RSV1	Lam Tei Irrigation Reservoir
RSV2	Hung Shui Hang Irrigation Reservoir
WG1	Water Gathering Ground
<b>Secondary Contact Recreation Subzones</b>	
SCZ1	Secondary Contact Recreation Subzone 1
SCZ2	Secondary Contact Recreation Subzone 2



**LEGEND**

- PORTAL AREA AND AT-GRADED ROAD/ ELEVATED ROAD
- PROPOSED TUNNEL
- PROJECT ELEMENT
- 500M ASSESSMENT AREA
- PLANNED ROUTE 11 (UNDER SEPARATE PROJECT)
- COUNTRY PARK
- WATER GATHERING GROUND
- SECONDARY CONTACT RECREATION SUBZONES
- THE BROTHERS MARINE PARK
- SPAWNING GROUND OF COMMERCIAL FISHERIES RESOURCES IN NORTH LANTAU WATER
- WATERCOURSE
- WATER SENSITIVE RECEIVER
- EPD MONITORING STATION
- ADDITIONAL BASELINE MONITORING

C	THIRD ISSUE	GL	07/23
B	SECOND ISSUE	GL	06/23
A	FIRST ISSUE	GL	04/23
Rev	Description	By	Date

Consultant  
**ARUP**

Project title  
 Agreement No. CE 65/2021(HY)  
 Tuen Mun Bypass - Investigation

Drawing title  
**LOCATIONS OF WATER SENSITIVE RECEIVERS**

Drawing no. <b>FIGURE 5.1</b>		Rev. <b>C</b>	
Drawn GL	Date 07/23	Checked TL	Approved FC
Scale 1:40000 @ A3		Status PRELIMINARY	

COPYRIGHT RESERVED

路政署  
 HIGHWAYS DEPARTMENT