



Aerial Photo No.: 1963-0142
Date: 22 Feb 1963
Description:

The Project site consisted of farmlands and village houses. Fanling Station and Sheung Shui Station were in operation.

Legend:

 Approximate Location of the Project Site

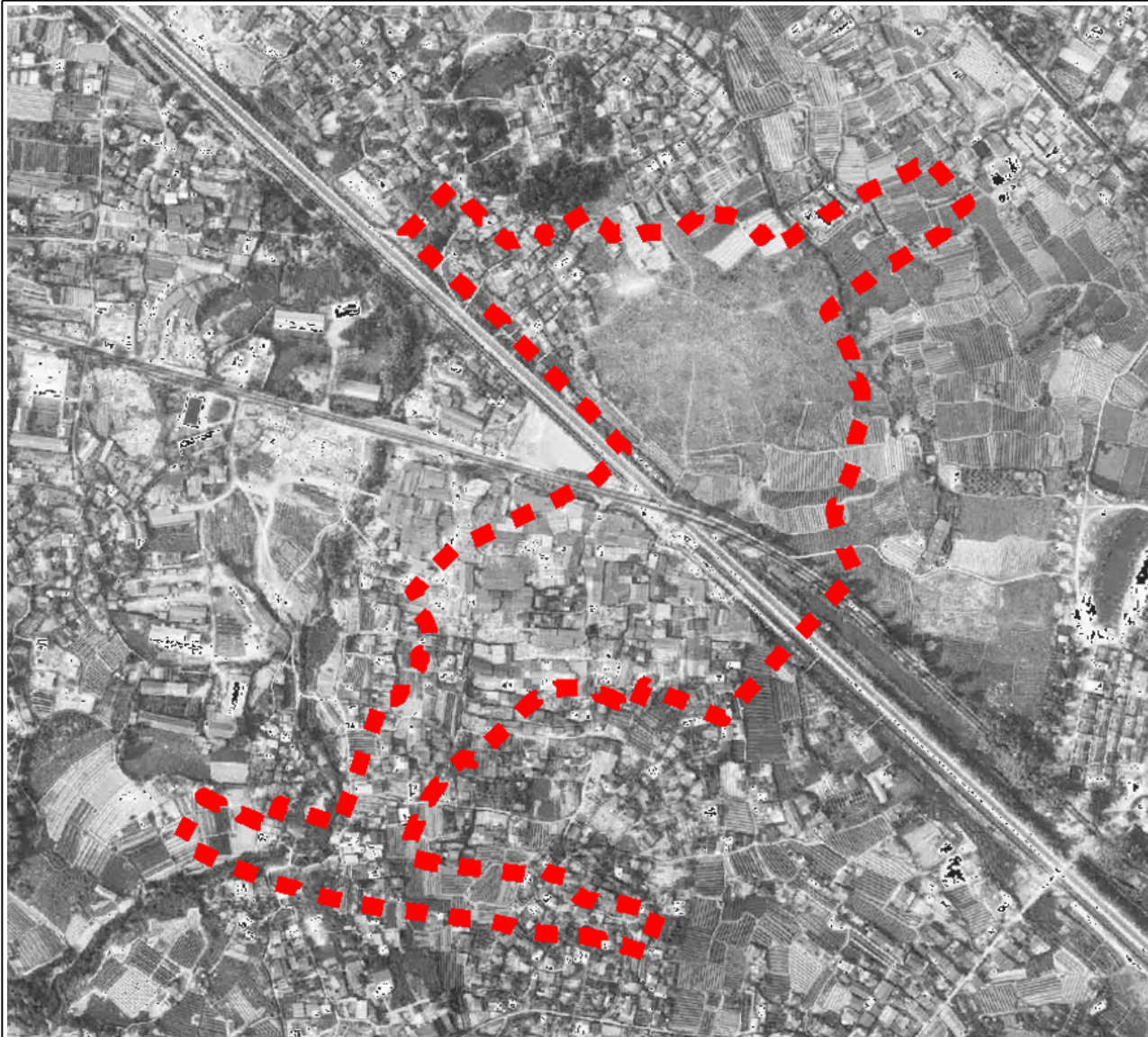
Source: HKMS 2.0, Lands Department, HKSARG

PROJECT:
 Improvement to So Kwun Po Interchange




TITLE:
 Historical Aerial Photos

DATE: 22/05/2023	CHECKED: CH	PROJECT NO.: 2512228A
DRAWN: DH	APPROVED: JN	SCALE: Not In Scale
DRAWING: Appendix 7.1	SIZE: A4	REV: 0



Aerial Photo No.: 03550
Date: 22 Mar 1973

Description:
 No significant change was observed at the Project site.

Legend:
 Approximate Location of the Project Site

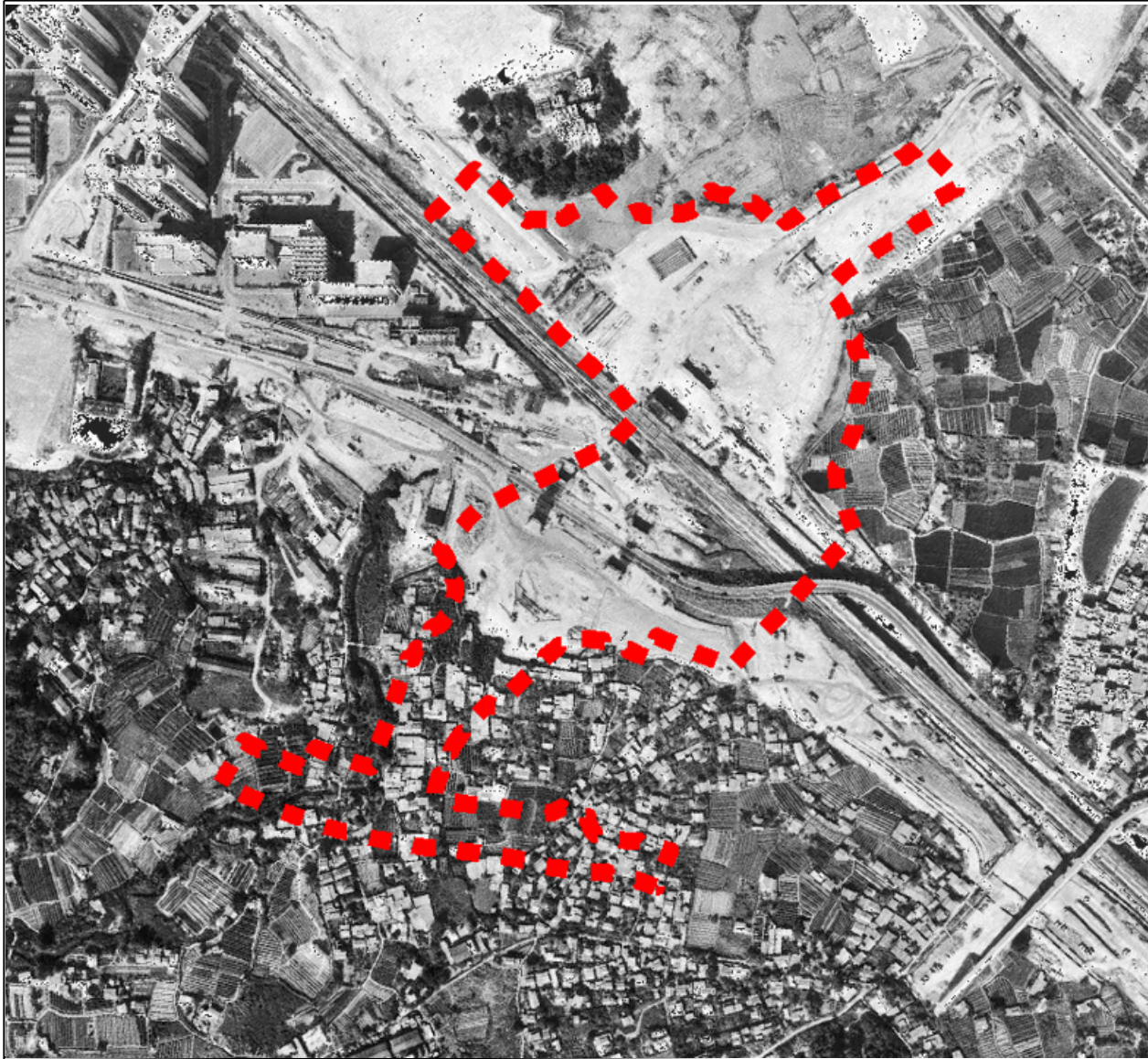
Source: HKMS 2.0, Lands Department, HKSARG

PROJECT:
 Improvement to So Kwun Po Interchange



TITLE:
 Historical Aerial Photos

DATE: 22/05/2023	CHECKED: CH	PROJECT NO.: 2512228A
DRAWN: DH	APPROVED: JN	SCALE: Not In Scale
DRAWING: Appendix 7.1	SIZE: A4	REV: 0



Aerial Photo No.: 52033
Date: 13 Dec 1983
Description:

For the northern part of the Project site, it mainly consisted of undeveloped land. For the southern part of the Project site, it remained as farmlands and village houses.

Legend:

 Approximate Location of the Project Site

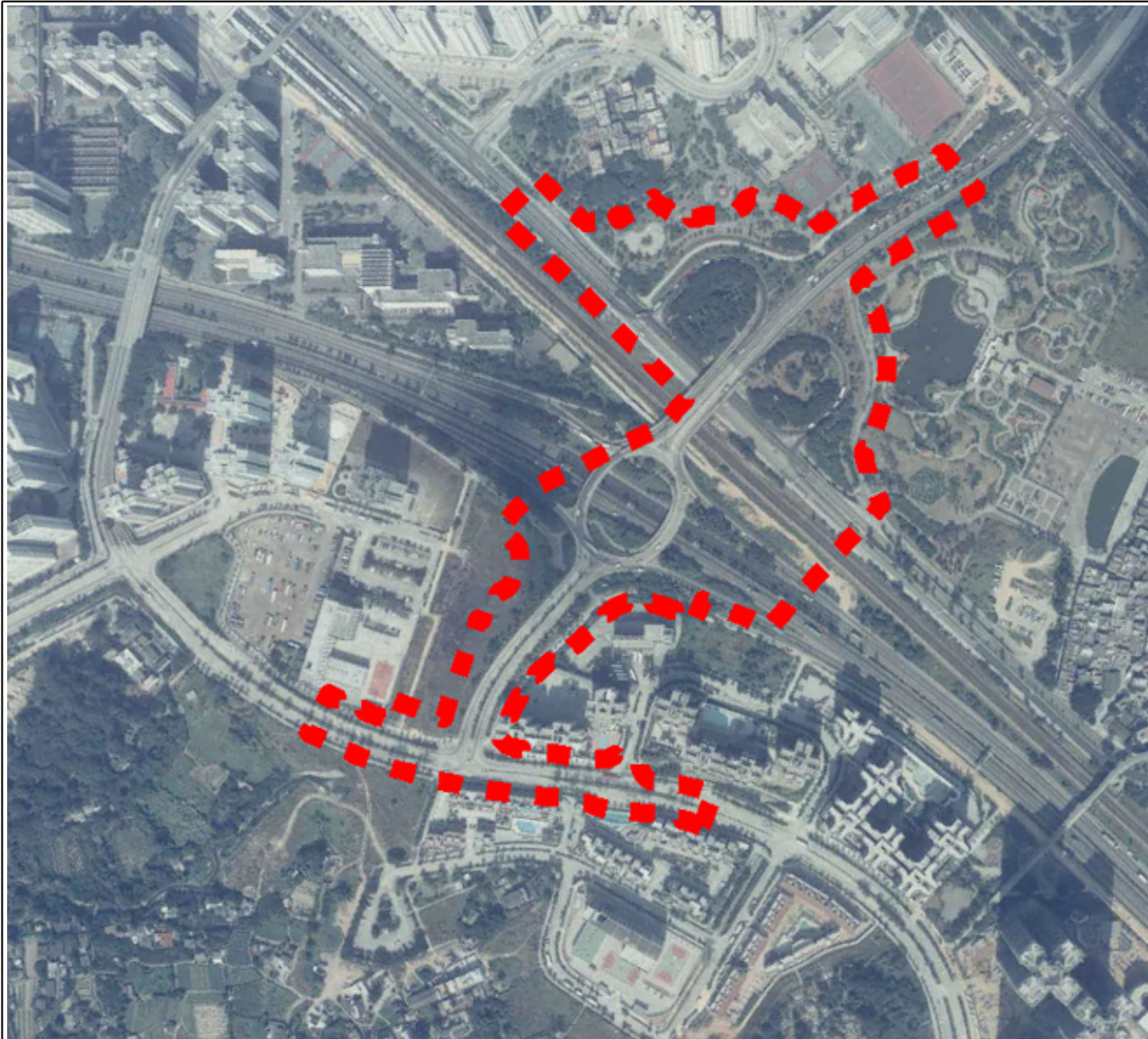
Source: HKMS 2.0, Lands Department, HKSARG

PROJECT:
 Improvement to So Kwun Po Interchange



TITLE:
 Historical Aerial Photos

DATE: 22/05/2023	CHECKED: CH	PROJECT NO.: 2512228A
DRAWN: DH	APPROVED: JN	SCALE: Not In Scale
DRAWING: Appendix 7.1	SIZE: A4	REV: 0



Aerial Photo No.: CN08693

Date: 7 Nov 1994

Description:

The Project site mainly consisted of railway and roads, including So Kwun Po Road, San Wan Road, Fanling Highway, Po Wing Road and Pak Wo Road. North District Park commenced operation in March 1990.

Legend:

 Approximate Location of the Project Site

Source: HKMS 2.0, Lands Department, HKSARG

PROJECT:

Improvement to So Kwun Po Interchange



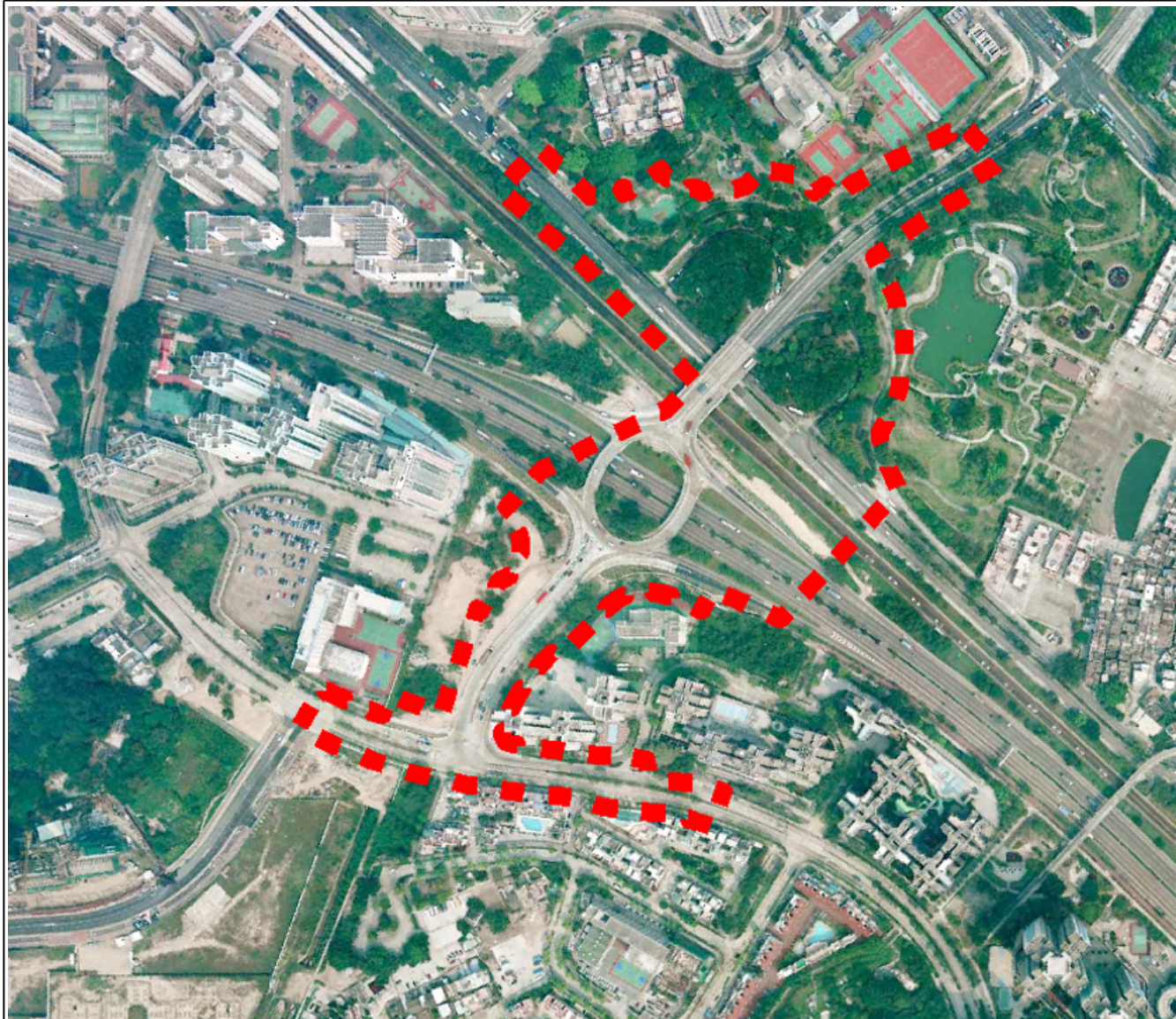
TITLE:

Historical Aerial Photos


DATE: 22/05/2023	CHECKED: CH	PROJECT NO.: 2512228A
-------------------------	--------------------	------------------------------

DRAWN: DH	APPROVED: JN	SCALE: Not In Scale
------------------	---------------------	----------------------------

DRAWING: Appendix 7.1	SIZE: A4	REV: 0
------------------------------	-----------------	---------------



Aerial Photo No.: CW56249
Date: 5 Mar 2004
Description:
 No significant change was observed at the Project site.

Legend:
 Approximate Location of the Project Site

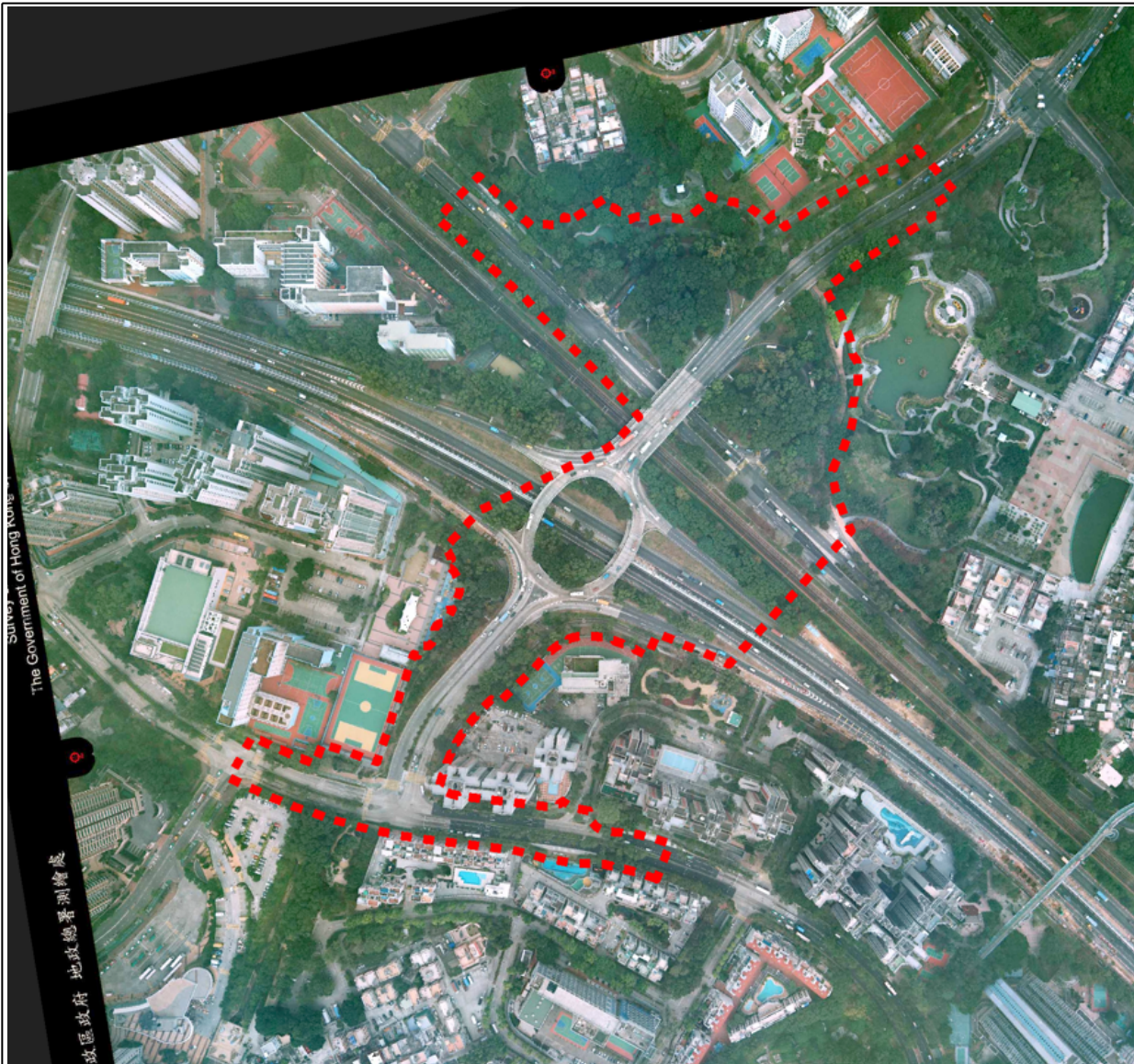
PROJECT:
 Improvement to So Kwun Po Interchange

TITLE:
 Historical Aerial Photos



DATE: 22/05/2023	CHECKED: CH	PROJECT NO.: 2512228A
DRAWN: DH	APPROVED: JN	SCALE: Not In Scale
DRAWING: Appendix 7.1		SIZE: A4
		REV: 0

Source: HKMS 2.0, Lands Department, HKSARG



Aerial Photo No.: CW93472

Date: 19 Jan 2012

Description:

No significant change was observed at the Project site. Po Wing Road Playground commenced operation in late 2000s.

Legend:

 Approximate Location of the Project Site

Source: HKMS 2.0, Lands Department, HKSARG

PROJECT:
Improvement to So Kwun Po Interchange




TITLE:
Historical Aerial Photos

DATE: 22/05/2023	CHECKED: CH	PROJECT NO.: 2512228A
DRAWN: DH	APPROVED: JN	SCALE: Not In Scale
DRAWING: Appendix 7.1	SIZE: A4	REV: 0



Aerial Photo No.: E002096C
Date: 19 Sep 2016

Description:
 No significant change was observed at the Project site.

Legend:
 Approximate Location of the Project Site

Source: HKMS 2.0, Lands Department, HKSARG

PROJECT:
 Improvement to So Kwun Po Interchange




TITLE:
 Historical Aerial Photos

DATE: 22/05/2023	CHECKED: CH	PROJECT NO.: 2512228A
DRAWN: DH	APPROVED: JN	SCALE: Not In Scale
DRAWING: Appendix 7.1	SIZE: A4	REV: 0



Aerial Photo No.: E124477C
Date: 14 Jan 2021
Description:
 No significant change was observed at the Project site.

Legend:

 Approximate Location of the Project Site

Source: HKMS 2.0, Lands Department, HKSARG

PROJECT:
Improvement to So Kwun Po Interchange



TITLE:
Historical Aerial Photos

DATE: 22/05/2023	CHECKED: CH	PROJECT NO.: 2512228A
DRAWN: DH	APPROVED: JN	SCALE: Not In Scale
DRAWING: Appendix 7.1		SIZE: A4
		REV: 0