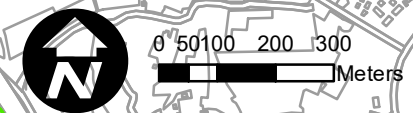
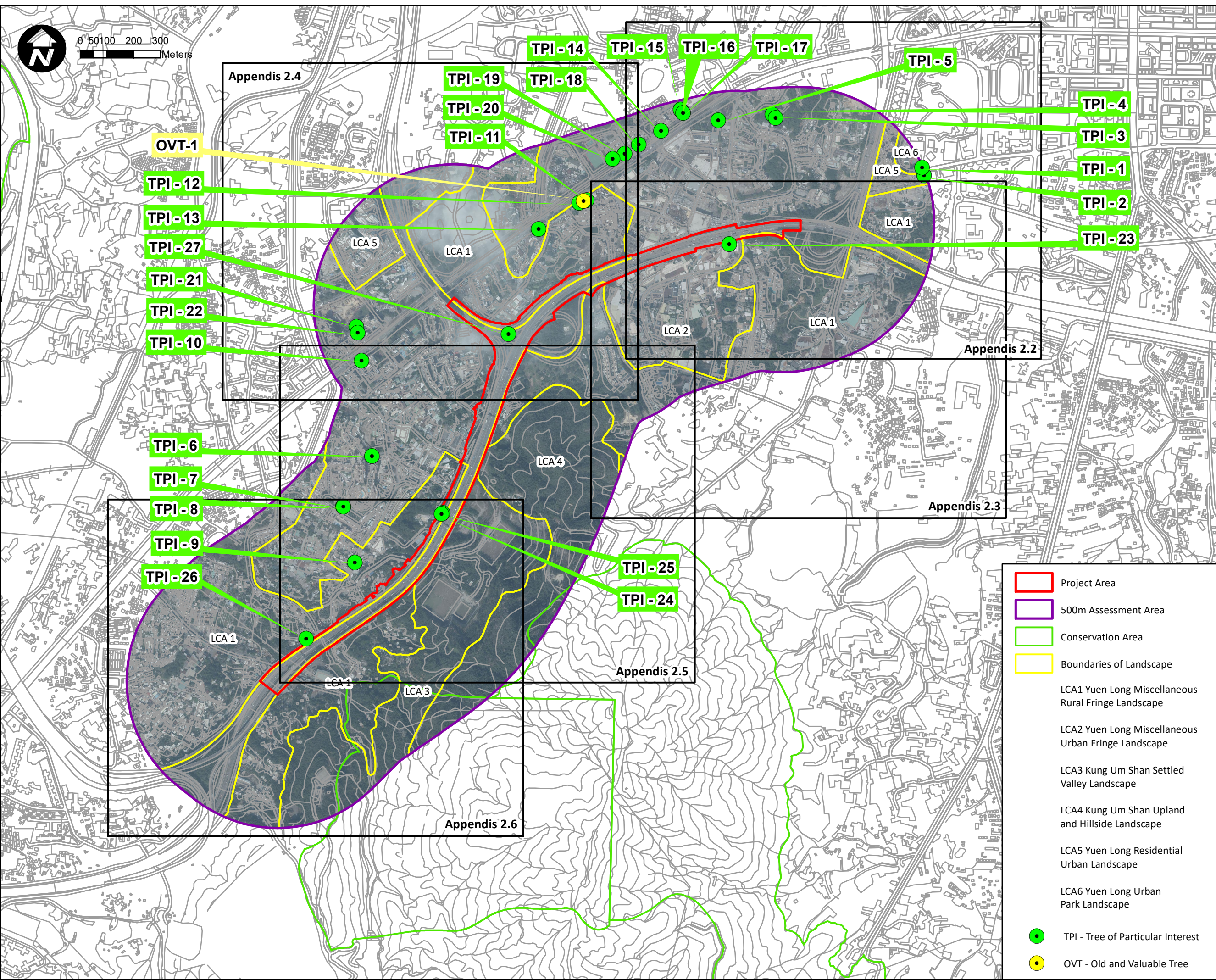


Document Path: C:\Users\Peter.Chan\OneDrive - Aurecon Group\1. ss\Desktop\Work\aur-yih\Figure\LVIA\2023\1109 LVIA\16\Appendix 2\Appendix 2\Appendix 2\2023\1116.mxd



**AECOM**  
**PROJECT**  
 項目  
 WIDENING OF YUEN LONG  
 HIGHWAY  
 (SECTION BETWEEN LAM TEI  
 AND TONG YAN SAN TSUEN)

**CLIENT**  
 業主  
 路政署  
 HIGHWAYS  
 DEPARTMENT

**CONSULTANT**  
 工程顧問公司  
 AECOM Asia Company Ltd.  
 www.aecom.com

**SUB-CONSULTANTS**  
 分判工程顧問公司

**ISSUE/REVISION**  
 修訂

I/R	DATE	DESCRIPTION	CHK.
修訂	日期	內容摘要	複核

**STATUS**  
 階段

**SCALE**  
 比例  
 1:13,000 on A3

**DIMENSION UNIT**  
 尺寸單位

**KEY PLAN**  
 索引圖

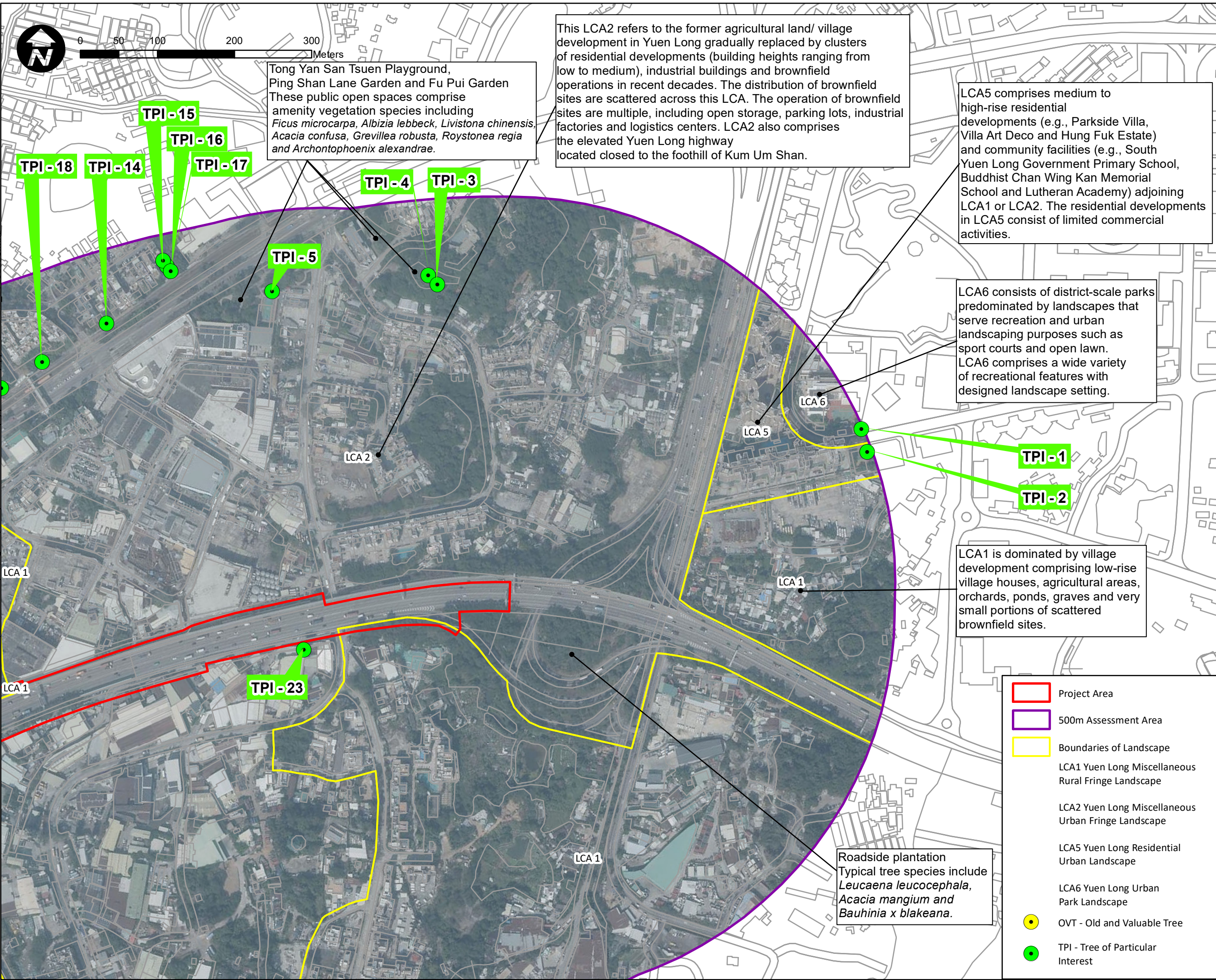
**PROJECT NO.**  
 項目編號  
 60695325

**CONTRACT NO.**  
 合約編號

**SHEET TITLE**  
 圖紙名稱

Description of Landscape Character Areas (LCAs)  
 and Existing Plantation  
**SHEET NUMBER**  
 圖紙編號  
 Appendix 9.2.1

- Project Area
- 500m Assessment Area
- Conservation Area
- Boundaries of Landscape
- LCA1 Yuen Long Miscellaneous Rural Fringe Landscape
- LCA2 Yuen Long Miscellaneous Urban Fringe Landscape
- LCA3 Kung Um Shan Settled Valley Landscape
- LCA4 Kung Um Shan Upland and Hillside Landscape
- LCA5 Yuen Long Residential Urban Landscape
- LCA6 Yuen Long Urban Park Landscape
- TPI - Tree of Particular Interest
- OVT - Old and Valuable Tree



Tong Yan San Tsuen Playground, Ping Shan Lane Garden and Fu Pui Garden  
 These public open spaces comprise amenity vegetation species including *Ficus microcarpa*, *Albizia lebbek*, *Livistona chinensis*, *Acacia confusa*, *Grevillea robusta*, *Roystonea regia* and *Archontophoenix alexandriae*.

This LCA2 refers to the former agricultural land/ village development in Yuen Long gradually replaced by clusters of residential developments (building heights ranging from low to medium), industrial buildings and brownfield operations in recent decades. The distribution of brownfield sites are scattered across this LCA. The operation of brownfield sites are multiple, including open storage, parking lots, industrial factories and logistics centers. LCA2 also comprises the elevated Yuen Long highway located closed to the foothill of Kum Um Shan.

LCA5 comprises medium to high-rise residential developments (e.g., Parkside Villa, Villa Art Deco and Hung Fuk Estate) and community facilities (e.g., South Yuen Long Government Primary School, Buddhist Chan Wing Kan Memorial School and Lutheran Academy) adjoining LCA1 or LCA2. The residential developments in LCA5 consist of limited commercial activities.

LCA6 consists of district-scale parks predominated by landscapes that serve recreation and urban landscaping purposes such as sport courts and open lawn. LCA6 comprises a wide variety of recreational features with designed landscape setting.

LCA1 is dominated by village development comprising low-rise village houses, agricultural areas, orchards, ponds, graves and very small portions of scattered brownfield sites.

Roadside plantation  
 Typical tree species include *Leucaena leucocephala*, *Acacia mangium* and *Bauhinia x blakeana*.

- Project Area
- 500m Assessment Area
- Boundaries of Landscape
- LCA1 Yuen Long Miscellaneous Rural Fringe Landscape
- LCA2 Yuen Long Miscellaneous Urban Fringe Landscape
- LCA5 Yuen Long Residential Urban Landscape
- LCA6 Yuen Long Urban Park Landscape
- OVT - Old and Valuable Tree
- TPI - Tree of Particular Interest

**PROJECT**  
 項目  
 WIDENING OF YUEN LONG HIGHWAY  
 (SECTION BETWEEN LAM TEI AND TONG YAN SAN TSUEN)

**CLIENT**  
 業主  
 路政署  
 HIGHWAYS DEPARTMENT

**CONSULTANT**  
 工程顧問公司  
 AECOM Asia Company Ltd.  
 www.aecom.com

**SUB-CONSULTANTS**  
 分判工程顧問公司

**ISSUE/REVISION**  
 修訂

I/R	DATE	DESCRIPTION	CHK.
修訂	日期	內容摘要	複核

**SCALE**  
 比例  
 1:4,500 on A3

**KEY PLAN**  
 索引圖

**PROJECT NO.**  
 項目編號  
 60695325

**CONTRACT NO.**  
 合約編號

**SHEET TITLE**  
 圖紙名稱

Description of Landscape Character Areas (LCAs) and Existing Plantation  
**SHEET NUMBER**  
 圖紙編號

Document Path: C:\Users\Peter.Chan\OneDrive - Aurecon Group\1. ss\Desktop\Work\aur-ylh\Figure\LVIA\20231109 LVIA\Appendix 2\Appendix 9.2.2\_20231116.mxd

Document Path: C:\Users\Peter.Chan\OneDrive - Aurecon Group\1. ss\Desktop\Work\1. ss\Desktop\Work\aur-yih\Figure\LVIA\20231109 LVIA\Appendix 2\Appendix 9.2.3\_20231116.mxd

I/R	DATE	DESCRIPTION	CHK.
修訂	日期	內容摘要	複核

**STATUS**  
 階段

**SCALE**  
 比例

**DIMENSION UNIT**  
 尺寸單位

1:4,500 on A3

**KEY PLAN**  
 索引圖

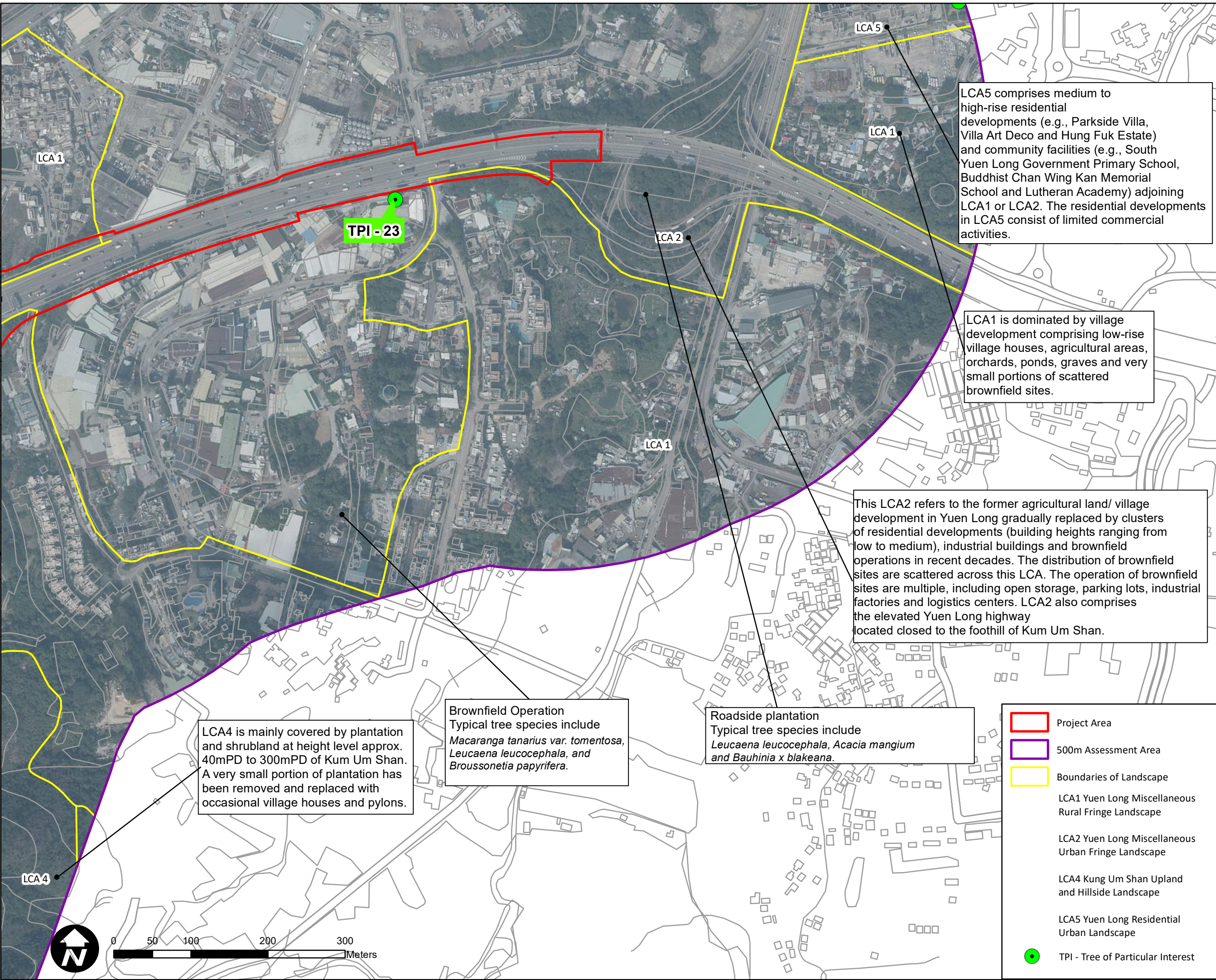
**PROJECT NO.**  
 項目編號

**CONTRACT NO.**  
 合約編號

60695325

**SHEET TITLE**  
 圖紙名稱

Description of Landscape Character Areas (LCAs)  
 and Existing Plantation  
**SHEET NUMBER**  
 圖紙編號



LCA5 comprises medium to high-rise residential developments (e.g., Parkside Villa, Villa Art Deco and Hung Fuk Estate) and community facilities (e.g., South Yuen Long Government Primary School, Buddhist Chan Wing Kan Memorial School and Lutheran Academy) adjoining LCA1 or LCA2. The residential developments in LCA5 consist of limited commercial activities.

LCA1 is dominated by village development comprising low-rise village houses, agricultural areas, orchards, ponds, graves and very small portions of scattered brownfield sites.

This LCA2 refers to the former agricultural land/ village development in Yuen Long gradually replaced by clusters of residential developments (building heights ranging from low to medium), industrial buildings and brownfield operations in recent decades. The distribution of brownfield sites are scattered across this LCA. The operation of brownfield sites are multiple, including open storage, parking lots, industrial factories and logistics centers. LCA2 also comprises the elevated Yuen Long highway located closed to the foothill of Kum Um Shan.

**Brownfield Operation**  
 Typical tree species include *Macaranga tanarius var. tomentosa*, *Leucaena leucocephala*, and *Broussonetia papyrifera*.

**Roadside plantation**  
 Typical tree species include *Leucaena leucocephala*, *Acacia mangium* and *Bauhinia x blakeana*.

LCA4 is mainly covered by plantation and shrubland at height level approx. 40mPD to 300mPD of Kum Um Shan. A very small portion of plantation has been removed and replaced with occasional village houses and pylons.

-  Project Area
  -  500m Assessment Area
  -  Boundaries of Landscape
  -  TPI - Tree of Particular Interest
- LCA1 Yuen Long Miscellaneous Rural Fringe Landscape
  - LCA2 Yuen Long Miscellaneous Urban Fringe Landscape
  - LCA4 Kung Um Shan Upland and Hillside Landscape
  - LCA5 Yuen Long Residential Urban Landscape



This LCA2 refers to the former agricultural land/ village development in Yuen Long gradually replaced by clusters of residential developments (building heights ranging from low to medium), industrial buildings and brownfield operations in recent decades. The distribution of brownfield sites are scattered across this LCA. The operation of brownfield sites are multiple, including open storage, parking lots, industrial factories and logistics centers. LCA2 also comprises the elevated Yuen Long highway located closed to the foothill of Kum Um Shan.

LCA5 comprises medium to high-rise residential developments (e.g., Parkside Villa, Villa Art Deco and Hung Fuk Estate) and community facilities (e.g., South Yuen Long Government Primary School, Buddhist Chan Wing Kan Memorial School and Lutheran Academy) adjoining LCA1 or LCA2. The residential developments in LCA5 consist of limited commercial activities.

Roadside plantation  
Typical tree species include *Leucaena leucocephala*, *Acacia mangium* and *Bauhinia x blakeana*.

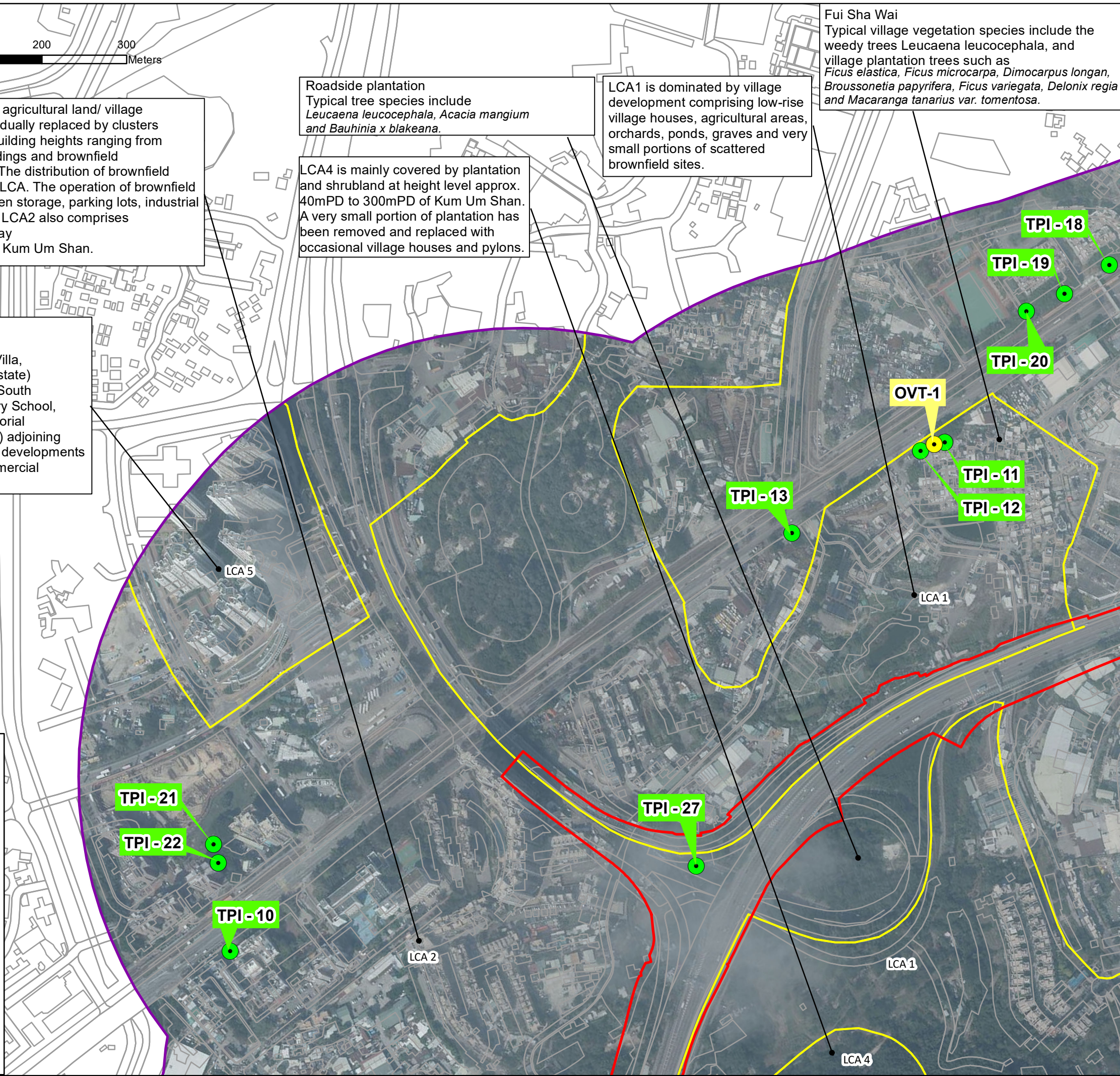
LCA4 is mainly covered by plantation and shrubland at height level approx. 40mPD to 300mPD of Kum Um Shan. A very small portion of plantation has been removed and replaced with occasional village houses and pylons.

LCA1 is dominated by village development comprising low-rise village houses, agricultural areas, orchards, ponds, graves and very small portions of scattered brownfield sites.

Fui Sha Wai  
Typical village vegetation species include the weedy trees *Leucaena leucocephala*, and village plantation trees such as *Ficus elastica*, *Ficus microcarpa*, *Dimocarpus longan*, *Broussonetia papyrifera*, *Ficus variegata*, *Delonix regia* and *Macaranga tanarius var. tomentosa*.

Document Path: C:\Users\Peter.Chan\OneDrive - Aurecon Group\1...ss\Desktop\Work\aur-yih\Figure\LVIA\20231109\_LVIA\16\Appendix 2\Appendix 9.2.4\_20231116.mxd

- Project Area
- 500m Assessment Area
- Boundaries of Landscape
- LCA1 Miscellaneous Rural Fringe Landscape
- LCA2 Miscellaneous Urban Fringe Landscape
- LCA4 Upland and Hillside Landscape
- LCA5 Residential Urban Landscape
- OVT - Old and Valuable Tree
- TPI - Tree of Particular Interest



**PROJECT**  
項目  
WIDENING OF YUEN LONG HIGHWAY  
(SECTION BETWEEN LAM TEI AND TONG YAN SAN TSUEN)

**CLIENT**  
業主  
 路政署  
HIGHWAYS DEPARTMENT

**CONSULTANT**  
工程顧問公司  
AECOM Asia Company Ltd.  
www.aecom.com

**SUB-CONSULTANTS**  
分判工程顧問公司

**ISSUE/REVISION**  
修訂

I/R	DATE	DESCRIPTION	CHK.
修訂	日期	內容摘要	複核

**STATUS**  
階段

**SCALE**  
比例  
1:4,500 on A3

**DIMENSION UNIT**  
尺寸單位

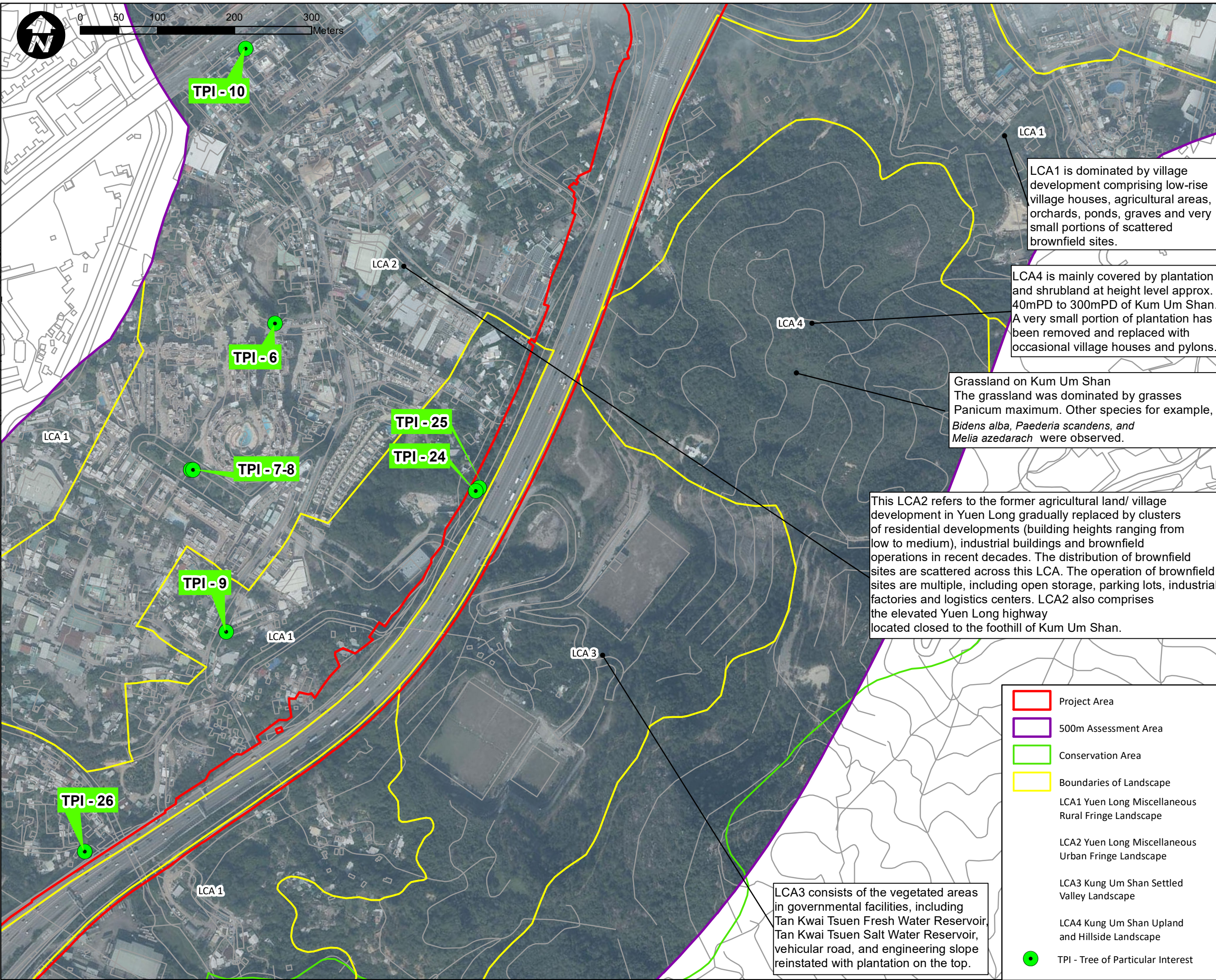
**KEY PLAN**  
索引圖

**PROJECT NO.**  
項目編號  
60695325

**CONTRACT NO.**  
合約編號

**SHEET TITLE**  
圖紙名稱  
Description of Landscape Character Areas (LCAs) and Existing Plantation  
**SHEET NUMBER**  
圖紙編號  
Appendix 9.2.4

Document Path: C:\Users\Peter.Chan\OneDrive - Aurecon Group\1. ss\Desktop\Work\aur-yih\Figure\LVIA\20231109 LVIA\Appendix 2\Appendix 9.2.5 20231116.mxd



**LCA 1**  
 LCA1 is dominated by village development comprising low-rise village houses, agricultural areas, orchards, ponds, graves and very small portions of scattered brownfield sites.

**LCA 4**  
 LCA4 is mainly covered by plantation and shrubland at height level approx. 40mPD to 300mPD of Kum Um Shan. A very small portion of plantation has been removed and replaced with occasional village houses and pylons.

**Grassland on Kum Um Shan**  
 The grassland was dominated by grasses Panicum maximum. Other species for example, Bidens alba, Paederia scandens, and Melia azedarach were observed.

**This LCA2 refers to the former agricultural land/ village development in Yuen Long gradually replaced by clusters of residential developments (building heights ranging from low to medium), industrial buildings and brownfield operations in recent decades. The distribution of brownfield sites are scattered across this LCA. The operation of brownfield sites are multiple, including open storage, parking lots, industrial factories and logistics centers. LCA2 also comprises the elevated Yuen Long highway located closed to the foothill of Kum Um Shan.**

**LCA3 consists of the vegetated areas in governmental facilities, including Tan Kwai Tsuen Fresh Water Reservoir, Tan Kwai Tsuen Salt Water Reservoir, vehicular road, and engineering slope reinstated with plantation on the top.**

- Project Area
- 500m Assessment Area
- Conservation Area
- Boundaries of Landscape
- LCA1 Yuen Long Miscellaneous Rural Fringe Landscape
- LCA2 Yuen Long Miscellaneous Urban Fringe Landscape
- LCA3 Kung Um Shan Settled Valley Landscape
- LCA4 Kung Um Shan Upland and Hillside Landscape
- TPI - Tree of Particular Interest

**AECOM**  
**PROJECT**  
 項目  
 WIDENING OF YUEN LONG HIGHWAY  
 (SECTION BETWEEN LAM TEI AND TONG YAN SAN TSUEN)

**CLIENT**  
 業主  
 路政署  
 HIGHWAYS DEPARTMENT

**CONSULTANT**  
 工程顧問公司  
 AECOM Asia Company Ltd.  
 www.aecom.com

**SUB-CONSULTANTS**  
 分判工程顧問公司

**ISSUE/REVISION**  
 修訂

I/R	DATE	DESCRIPTION	CHK.
修訂	日期	內容摘要	複核

**STATUS**  
 階段

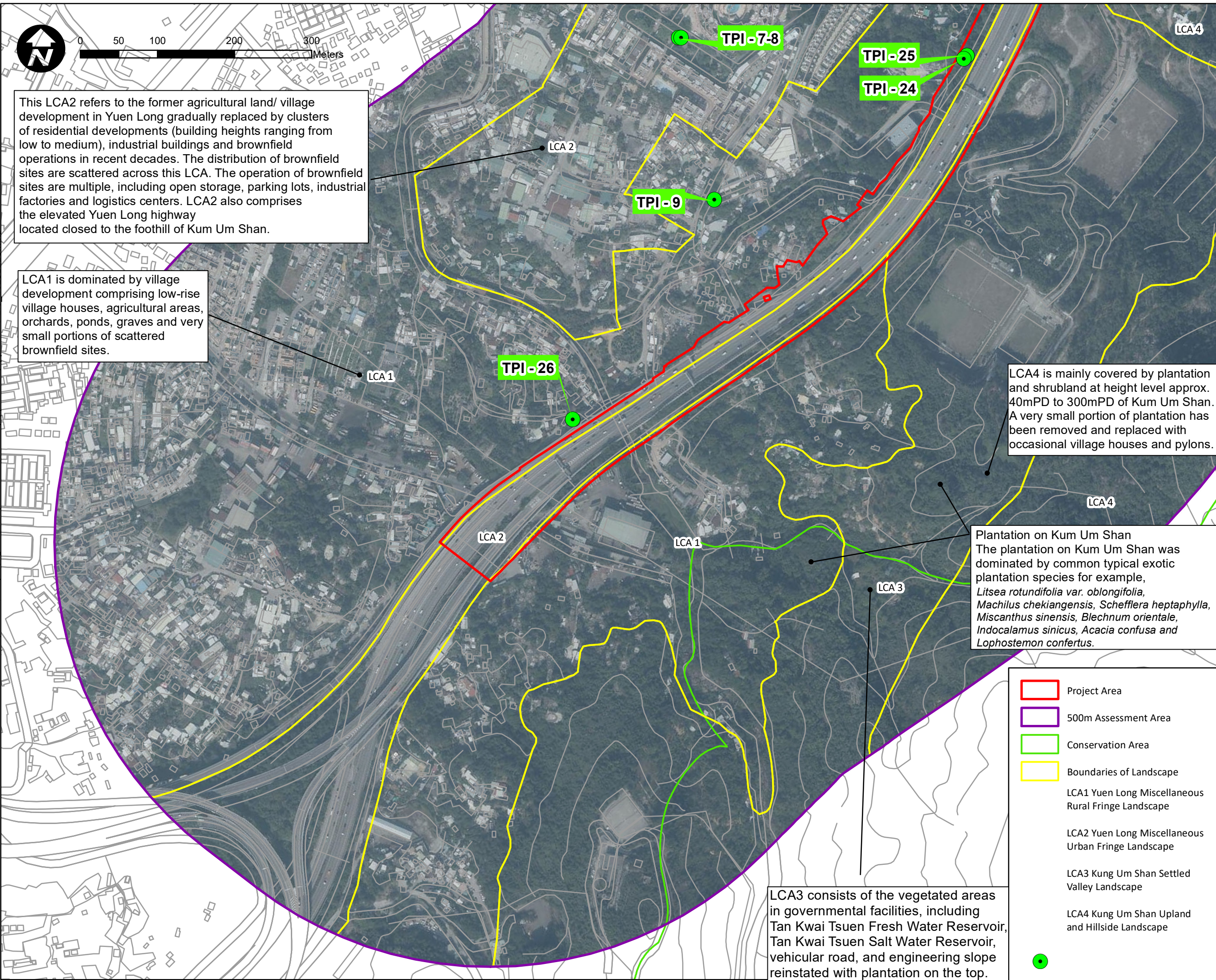
**SCALE**  
 比例  
 1:4,500 on A3

**KEY PLAN**  
 索引圖

**PROJECT NO.**  
 項目編號  
 60695325

**CONTRACT NO.**  
 合約編號  
 CE 17/2022(HY)

**SHEET TITLE**  
 圖紙名稱  
 Description of Landscape Character Areas (LCAs) and Existing Plantation  
**SHEET NUMBER**  
 圖紙編號  
 Appendix 9.2.5



This LCA2 refers to the former agricultural land/ village development in Yuen Long gradually replaced by clusters of residential developments (building heights ranging from low to medium), industrial buildings and brownfield operations in recent decades. The distribution of brownfield sites are scattered across this LCA. The operation of brownfield sites are multiple, including open storage, parking lots, industrial factories and logistics centers. LCA2 also comprises the elevated Yuen Long highway located closed to the foothill of Kum Um Shan.

LCA1 is dominated by village development comprising low-rise village houses, agricultural areas, orchards, ponds, graves and very small portions of scattered brownfield sites.

LCA4 is mainly covered by plantation and shrubland at height level approx. 40mPD to 300mPD of Kum Um Shan. A very small portion of plantation has been removed and replaced with occasional village houses and pylons.

Plantation on Kum Um Shan  
The plantation on Kum Um Shan was dominated by common typical exotic plantation species for example, *Litsea rotundifolia* var. *oblongifolia*, *Machilus chekiangensis*, *Schefflera heptaphylla*, *Miscanthus sinensis*, *Blechnum orientale*, *Indocalamus sinicus*, *Acacia confusa* and *Lophostemon confertus*.

LCA3 consists of the vegetated areas in governmental facilities, including Tan Kwai Tsuen Fresh Water Reservoir, Tan Kwai Tsuen Salt Water Reservoir, vehicular road, and engineering slope reinstated with plantation on the top.

- Project Area
- 500m Assessment Area
- Conservation Area
- Boundaries of Landscape
- LCA1 Yuen Long Miscellaneous Rural Fringe Landscape
- LCA2 Yuen Long Miscellaneous Urban Fringe Landscape
- LCA3 Kung Um Shan Settled Valley Landscape
- LCA4 Kung Um Shan Upland and Hillside Landscape
- 

ISSUE/REVISION  
修訂

NO.	DATE	DESCRIPTION	CHK.

I/R	DATE	DESCRIPTION	CHK.
修訂	日期	內容摘要	複核

STATUS  
階段

SCALE	DIMENSION UNIT
比例	尺寸單位
1:4,500 on A3	

KEY PLAN  
索引圖

PROJECT NO.	CONTRACT NO.
項目編號	合約編號
60695325	

SHEET TITLE  
圖紙名稱  
Description of Landscape Character Areas (LCAs) and Existing Plantation  
SHEET NUMBER  
圖紙編號  
Appendix 9.2.6

Document Path: C:\Users\Peter.Chan\OneDrive - Aurecon Group\1. ss\Desktop\Work\aur-yih\Figure\LVIA\20231109 LVIA 16\Appendix 2\Appendix 9.2.6 20231116.mxd