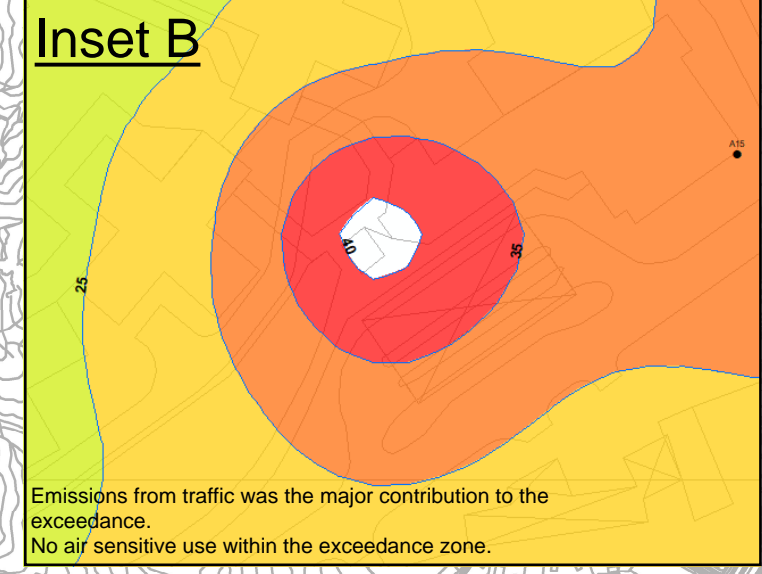
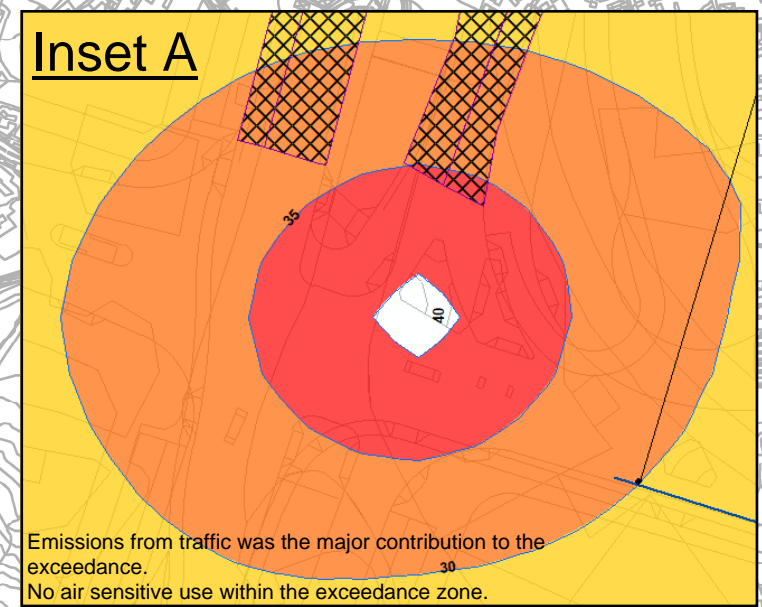
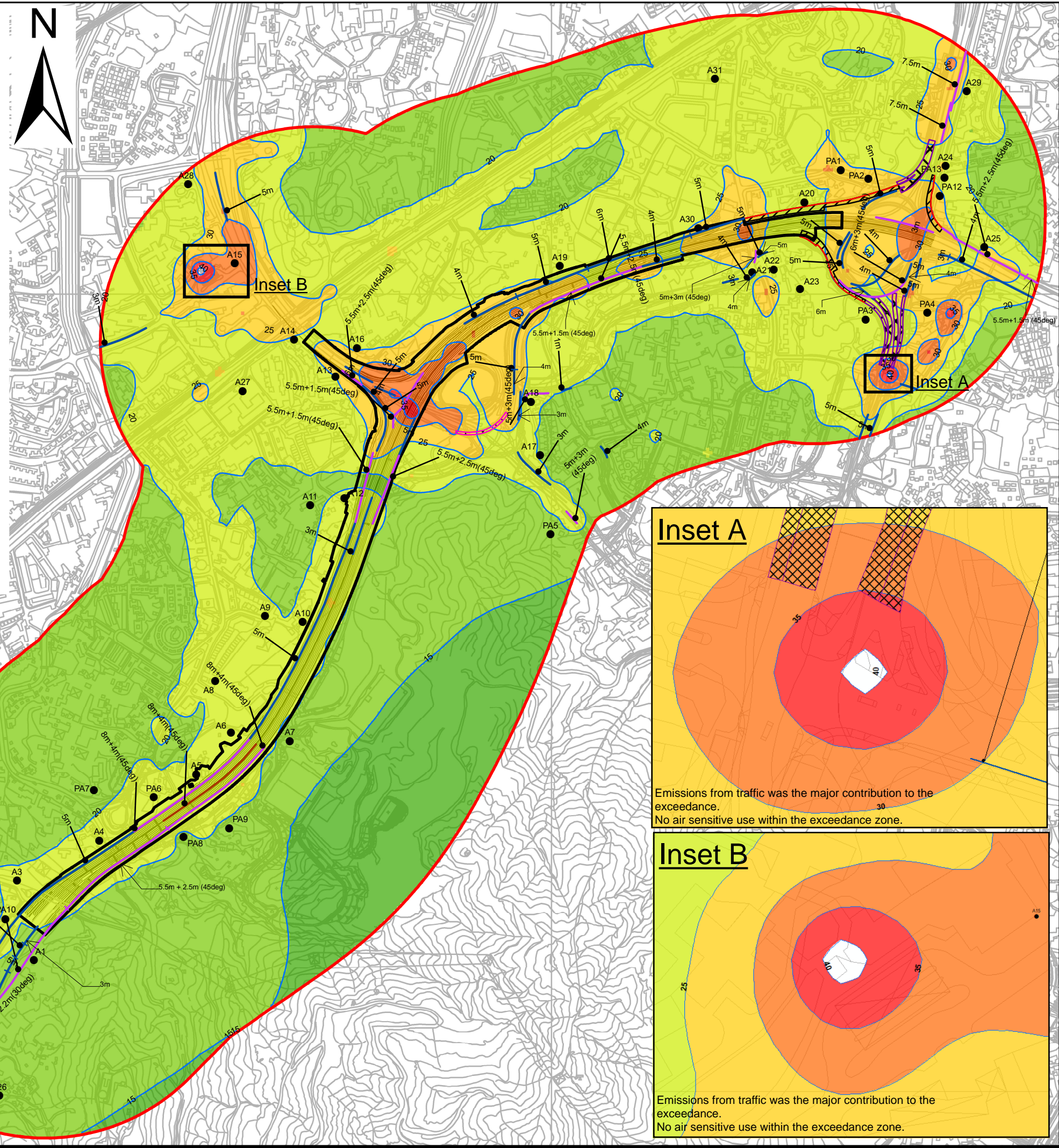
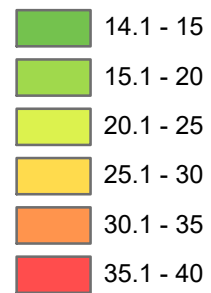


ISO A1 594mm x 841mm  
 Approved:  
 Checked:  
 Designer:  
 Project Management Initials:  
 \$DATE\$  
 \$USER\$  
 \$FILE\$

**Legend**

- Representative Air Sensitive Receivers
- ▭ 500m Air Quality Impact Assessment
- X m Vertical Barrier with Y m Y-Shape Cantilever Arm at Z Degree from Ground Level
- Xm Vertical Barrier
- Xm Vertical Barrier with Y m Cantilever Arm at Z Degree from Ground Level
- ⊗ Underpass
- ▨ Semi-Enclosure with Enclosed Side Coloured Red
- ⊗ Full Enclosure
- Contour

**Cumulative Annual Average NO<sub>2</sub> Concentration (µg/m<sup>3</sup>) at 1.5 mAG during Operation Phase**



**PROJECT**  
 WIDENING OF YUEN LONG HIGHWAY  
 (SECTION BETWEEN LAM TEI AND TONG YAN SAN TSUEN)

**CLIENT**  
 路政署  
 HIGHWAYS DEPARTMENT

**CONSULTANT**  
 AECOM Asia Company Ltd.  
 www.aecom.com

**SUB-CONSULTANTS**

**ISSUE/REVISION**

NO.	DATE	DESCRIPTION	CHK.

**STATUS**

**SCALE**  
 A1 1 : 10000

**DIMENSION UNIT**  
 METRES

**KEY PLAN**

**PROJECT NO.**  
 60695325

**CONTRACT NO.**

**SHEET TITLE**  
 CONTOUR PLOT OF CUMULATIVE ANNUAL AVERAGED NO<sub>2</sub> CONCENTRATION (µg/m<sup>3</sup>) AT 1.5 mAG DURING OPERATION PHASE

**SHEET NUMBER**  
 60695325/EIA/FIGURE 3.18

This drawing has been prepared for the use of AECOM's client. It may not be used, modified, reproduced or relied upon by third parties, except as agreed by AECOM or as required by law. AECOM accepts no responsibility and denies any liability whatsoever to any party that uses or relies on this drawing without AECOM's express written consent. All measures must be obtained from the stated dimensions.