

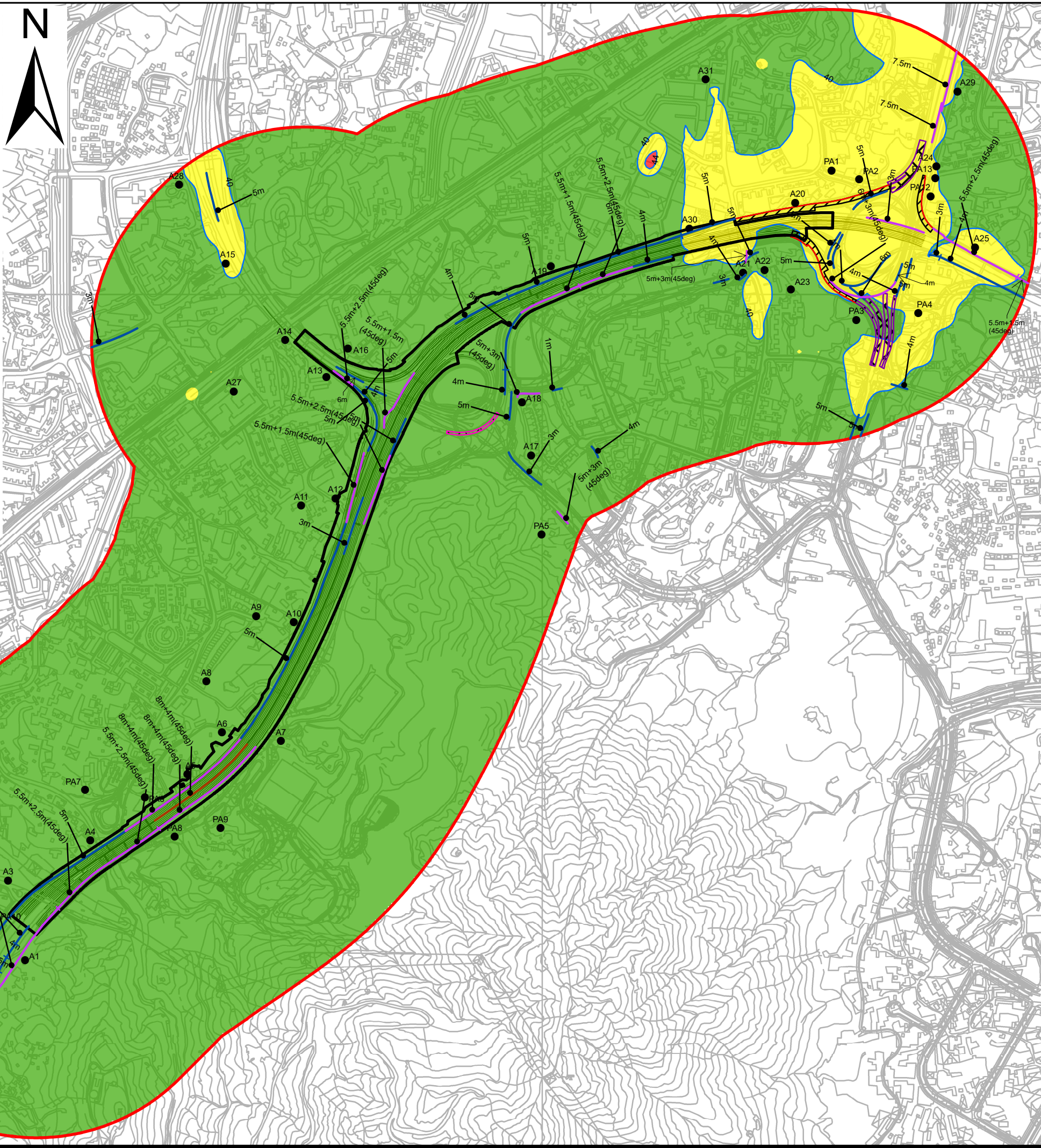
ISO A1 594mm x 841mm
 Approved:
 Checked:
 Designer:
 Project Management Initials:
 \$DATE\$
 \$USERS\$
 \$PATH\$ \$FILES\$

Legend

- Representative Air Sensitive Receivers
- ▭ 500m Air Quality Impact Assessment
- X m Vertical Barrier with Y m Y-Shape Cantilever Arm at Z Degree from Ground Level
- Xm Vertical Barrier
- Xm Vertical Barrier with Y m Cantilever Arm at Z Degree from Ground Level
- ▨ Underpass
- ▨ Semi-Enclosure with Enclosed Side Coloured Red
- ▨ Full Enclosure
- Contour

19th Highest Cumulative Hourly FSP Concentration ($\mu\text{g}/\text{m}^3$) at 1.5 mAG during Operation Phase
 Concentration limit: $50 \mu\text{g}/\text{m}^3$
 No. of exceedances allowed: 18

- 36.8 - 40
- 40.1 - 44
- 44.1 - 48



PROJECT
 WIDENING OF YUEN LONG HIGHWAY
 (SECTION BETWEEN LAM TEI AND TONG YAN SAN TSUEN)

CLIENT
 路政署
 HIGHWAYS DEPARTMENT

CONSULTANT
 AECOM Asia Company Ltd.
 www.aecom.com

SUB-CONSULTANTS

ISSUE/REVISION

NO.	DATE	DESCRIPTION	CHK.

STATUS

SCALE
 A1 1:10000

DIMENSION UNIT
 METRES

KEY PLAN

PROJECT NO.
 60695325

CONTRACT NO.

SHEET TITLE
 CONTOUR PLOT OF 19th HIGHEST CUMULATIVE DAILY FSP CONCENTRATION ($\mu\text{g}/\text{m}^3$) AT 1.5 mAG DURING OPERATION PHASE

SHEET NUMBER
 60695325/EIA/FIGURE 3.21

This drawing has been prepared for the use of AECOM's client. It may not be used, modified, reproduced or used upon by third parties, except as agreed by AECOM or as required by law. AECOM accepts no responsibility, and disclaims any liability whatsoever, for any party that uses or relies on this drawing without AECOM's express written consent. Do not scale this document. All measures must be obtained from the stated dimensions.