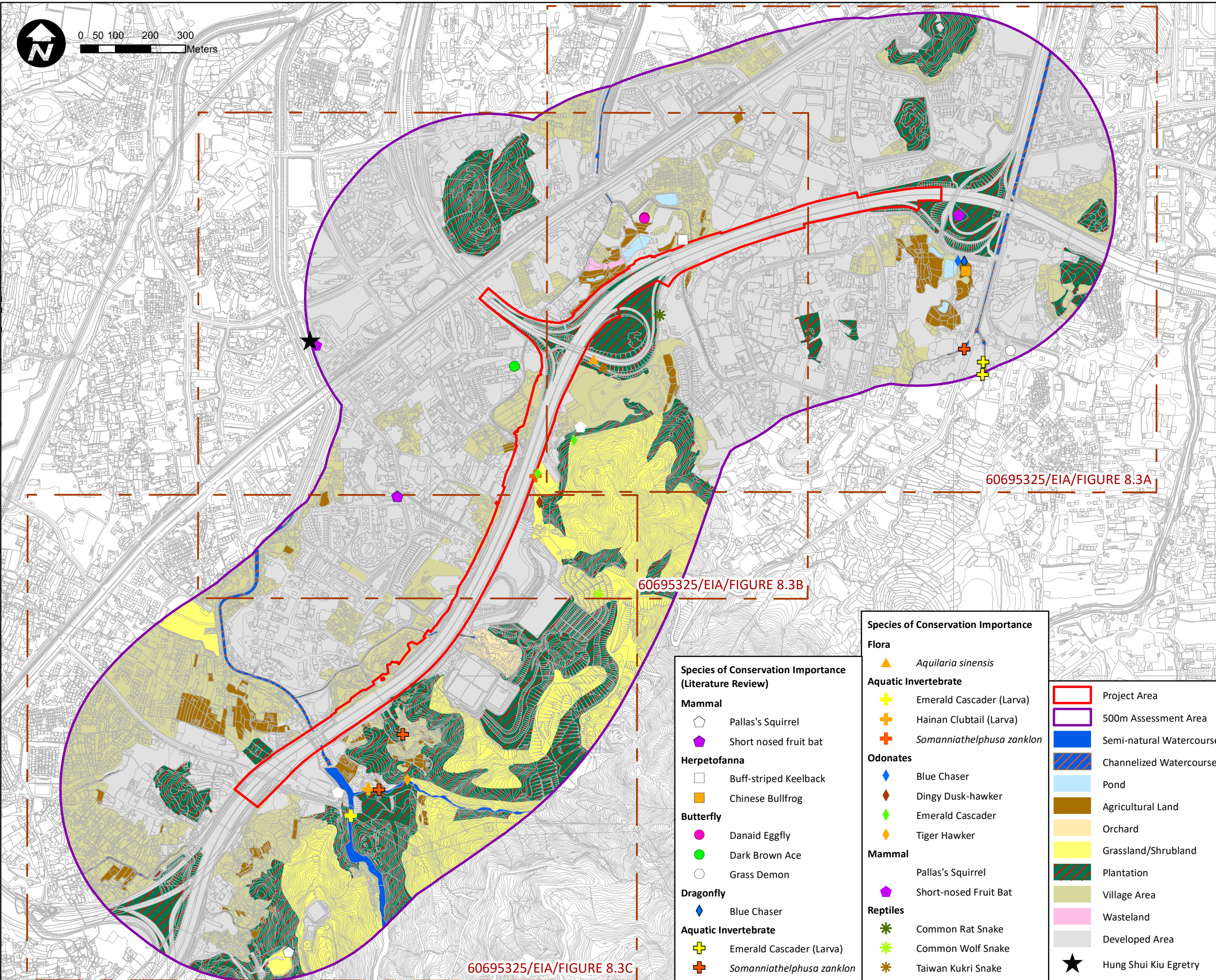


Document Path: C:\Users\Peter.Chan\OneDrive - Aurecon Group\1. ss\Desktop\Work\aur-yih\Figure\MXD\20231114\Fig8.3 Habitat and Species rev_2_20231114.mxd



AECOM
PROJECT
 項目
WIDENING OF YUEN LONG HIGHWAY
 (SECTION BETWEEN LAM TEI AND TONG YAN SAN TSUEN)

CLIENT
 業主
 路政署
 HIGHWAYS DEPARTMENT

CONSULTANT
 工程顧問公司
 AECOM Asia Company Ltd.
 www.aecom.com

SUB-CONSULTANTS
 分判工程顧問公司

ISSUE/REVISION
 修訂

NO.	DATE	DESCRIPTION	CHK.
0	24 May23		MM
1	20 Sep23		MM
2	14 Nov23		MM

I/R DATE DESCRIPTION CHK.
 修訂日期 內容摘要 複核

STATUS
 階段

SCALE
 比例
 1:10,000 on A3

DIMENSION UNIT
 尺寸單位

KEY PLAN
 索引圖

PROJECT NO.
 項目編號
 60695325

CONTRACT NO.
 合約編號

SHEET TITLE
 圖紙名稱
 Habitat Map and Species of Conservation Importance within 500m Assessment Area

SHEET NUMBER
 圖紙編號
 60695325/EIA/FIGURE 8.3

Species of Conservation Importance (Literature Review)

Mammal

- Pallas's Squirrel
- Short nosed fruit bat

Herpetofanna

- Buff-striped Keelback
- Chinese Bullfrog

Butterfly

- Danaid Eggfly
- Dark Brown Ace
- Grass Demon

Dragonfly

- Blue Chaser

Aquatic Invertebrate

- Emerald Cascader (Larva)
- Somanniathelphusa zanklon

Species of Conservation Importance

Flora

- Aquilaria sinensis

Aquatic Invertebrate

- Emerald Cascader (Larva)
- Hainan Clubtail (Larva)
- Somanniathelphusa zanklon

Odonates

- Blue Chaser
- Dingy Dusk-hawker
- Emerald Cascader
- Tiger Hawker

Mammal

- Pallas's Squirrel
- Short-nosed Fruit Bat

Reptiles

- Common Rat Snake
- Common Wolf Snake
- Taiwan Kukri Snake

Project Area

500m Assessment Area

Semi-natural Watercourse

Channelized Watercourse

Pond

Agricultural Land

Orchard

Grassland/Shrubland

Plantation

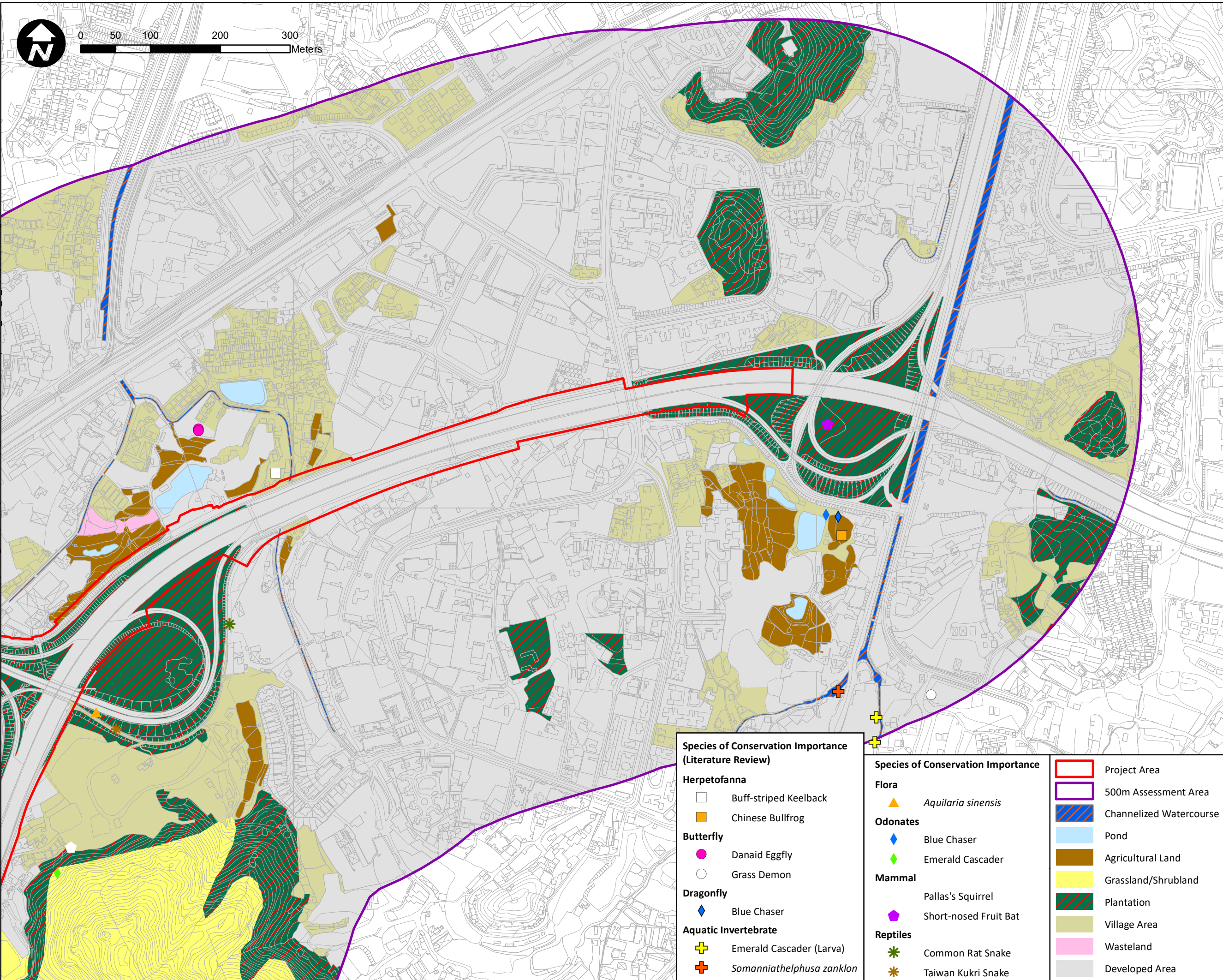
Village Area

Wasteland

Developed Area

Hung Shui Kiu Egret

Document Path: C:\Users\Peter.Chan\OneDrive - Aurecon Group\1. ss\Desktop\Work\aur-yih\Figure\MXD\20231114\Fig8.3A Habitat and Species Importance within 500m Assessment Area



Species of Conservation Importance (Literature Review)		Species of Conservation Importance		Legend	
Herpetofanna		Flora		Project Area	
□	Buff-striped Keelback	▲	<i>Aquilaria sinensis</i>	▭	500m Assessment Area
■	Chinese Bullfrog	Odonates		▨	Channelized Watercourse
Butterfly		◆	Blue Chaser	■	Pond
●	Danaid Eggfly	◆	Emerald Cascader	■	Agricultural Land
○	Grass Demon	Mammal		■	Grassland/Shrubland
Dragonfly		◆	Pallas's Squirrel	▨	Plantation
◆	Blue Chaser	◆	Short-nosed Fruit Bat	■	Village Area
Aquatic Invertebrate		Reptiles		■	Wasteland
+	Emerald Cascader (Larva)	◆	Common Rat Snake	■	Developed Area
+	<i>Somaniathelphusa zanklon</i>	◆	Taiwan Kukri Snake		

AECOM
PROJECT
 項目
 WIDENING OF YUEN LONG HIGHWAY
 (SECTION BETWEEN LAM TEI AND TONG YAN SAN TSUEN)

CLIENT
 業主
 路政署
 HIGHWAYS DEPARTMENT

CONSULTANT
 工程顧問公司
 AECOM Asia Company Ltd.
 www.aecom.com

SUB-CONSULTANTS
 分判工程顧問公司

ISSUE/REVISION
 修訂

No.	Date	Description	Checked by
0	24 May23		MM
1	20 Sep23		MM
2	14 Nov23		MM

I/R	DATE	DESCRIPTION	CHK.
修訂	日期	內容摘要	複核

STATUS
 階段

SCALE
 比例
 1:5,000 on A3

DIMENSION UNIT
 尺寸單位

KEY PLAN
 索引圖

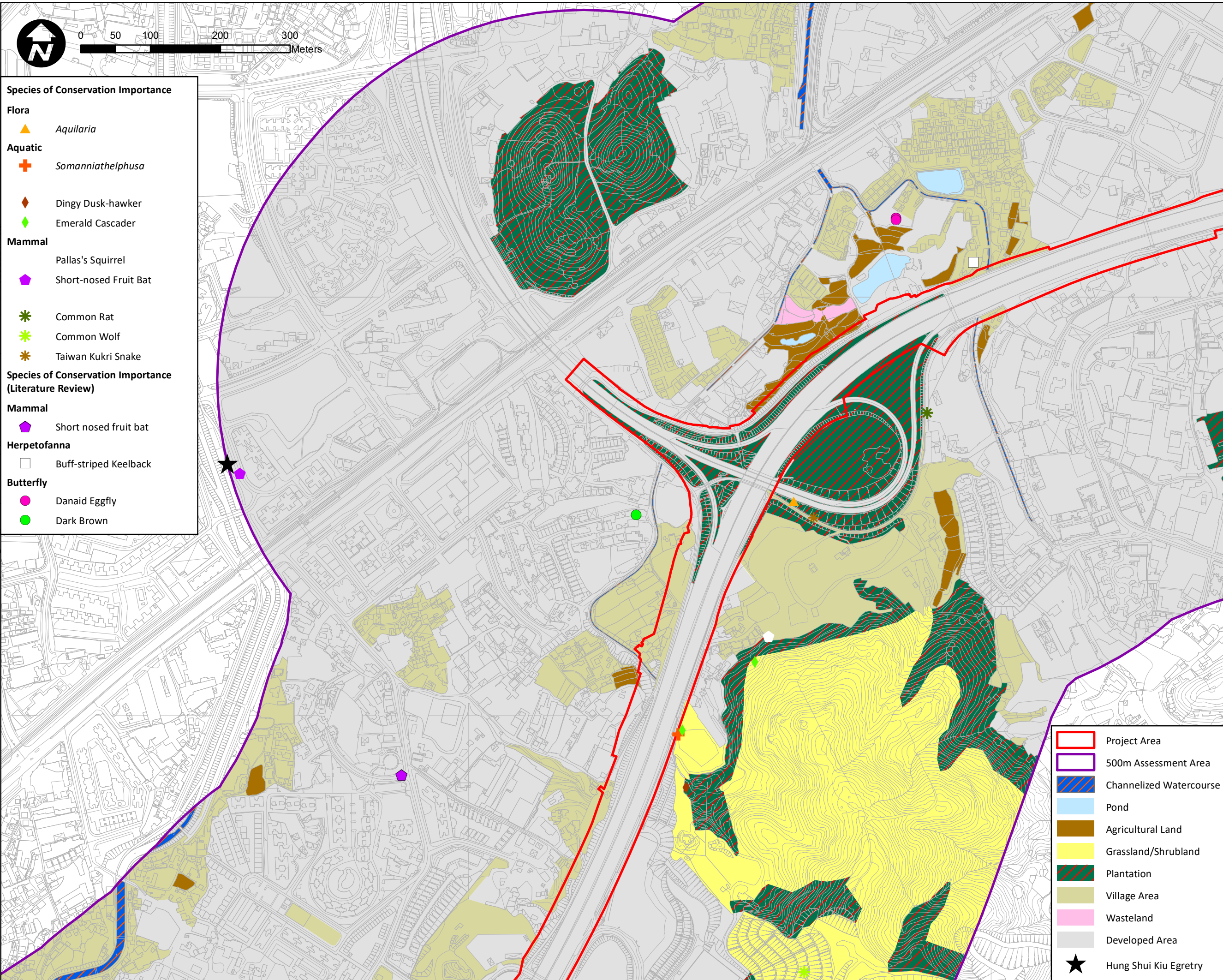
PROJECT NO.
 項目編號
 60695325

CONTRACT NO.
 合約編號

SHEET TITLE
 圖紙名稱
 Habitat Map and Species of Conservation Importance within 500m Assessment Area

SHEET NUMBER
 圖紙編號
 60695325/EIA/FIGURE 8.3A

Document Path: C:\Users\Peter.Chan\OneDrive - Aurecon Group\1. ss\Desktop\Work\aur-yih\Figure\MXD\20231114\Fig.8.3B_Habitat and Species Importance within 500m Assessment Area.mxd



- Species of Conservation Importance**
- Flora**
- ▲ *Aquilaria*
- Aquatic**
- ⊕ *Somanniathelphusa*
- Mammal**
- ◆ Dingy Dusk-hawker
 - ◇ Emerald Cascader
 - ◆ Pallas's Squirrel
 - ◆ Short-nosed Fruit Bat
 - ★ Common Rat
 - ★ Common Wolf
 - ★ Taiwan Kukri Snake
- Species of Conservation Importance (Literature Review)**
- Mammal**
- ◆ Short nosed fruit bat
- Herpetofanna**
- Buff-striped Keelback
- Butterfly**
- Danaid Eggfly
 - Dark Brown

- Project Area
- 500m Assessment Area
- Channelized Watercourse
- Pond
- Agricultural Land
- Grassland/Shrubland
- Plantation
- Village Area
- Wasteland
- Developed Area
- Hung Shui Kiu Egret

AECOM
PROJECT
 項目
WIDENING OF YUEN LONG HIGHWAY
 (SECTION BETWEEN LAM TEI AND TONG YAN SAN TSUEN)

CLIENT
 業主
路政署
HIGHWAYS DEPARTMENT

CONSULTANT
 工程顧問公司
 AECOM Asia Company Ltd.
 www.aecom.com

SUB-CONSULTANTS
 分判工程顧問公司

ISSUE/REVISION
 修訂

NO.	DATE	DESCRIPTION	CHK.
0	24 May23		MM
1	20 Sep23		MM
2	14 Nov23		MM

I/R	DATE	DESCRIPTION	CHK.
修訂	日期	內容摘要	複核

STATUS
 階段

SCALE
 比例
 1:5,000 on A3

DIMENSION UNIT
 尺寸單位

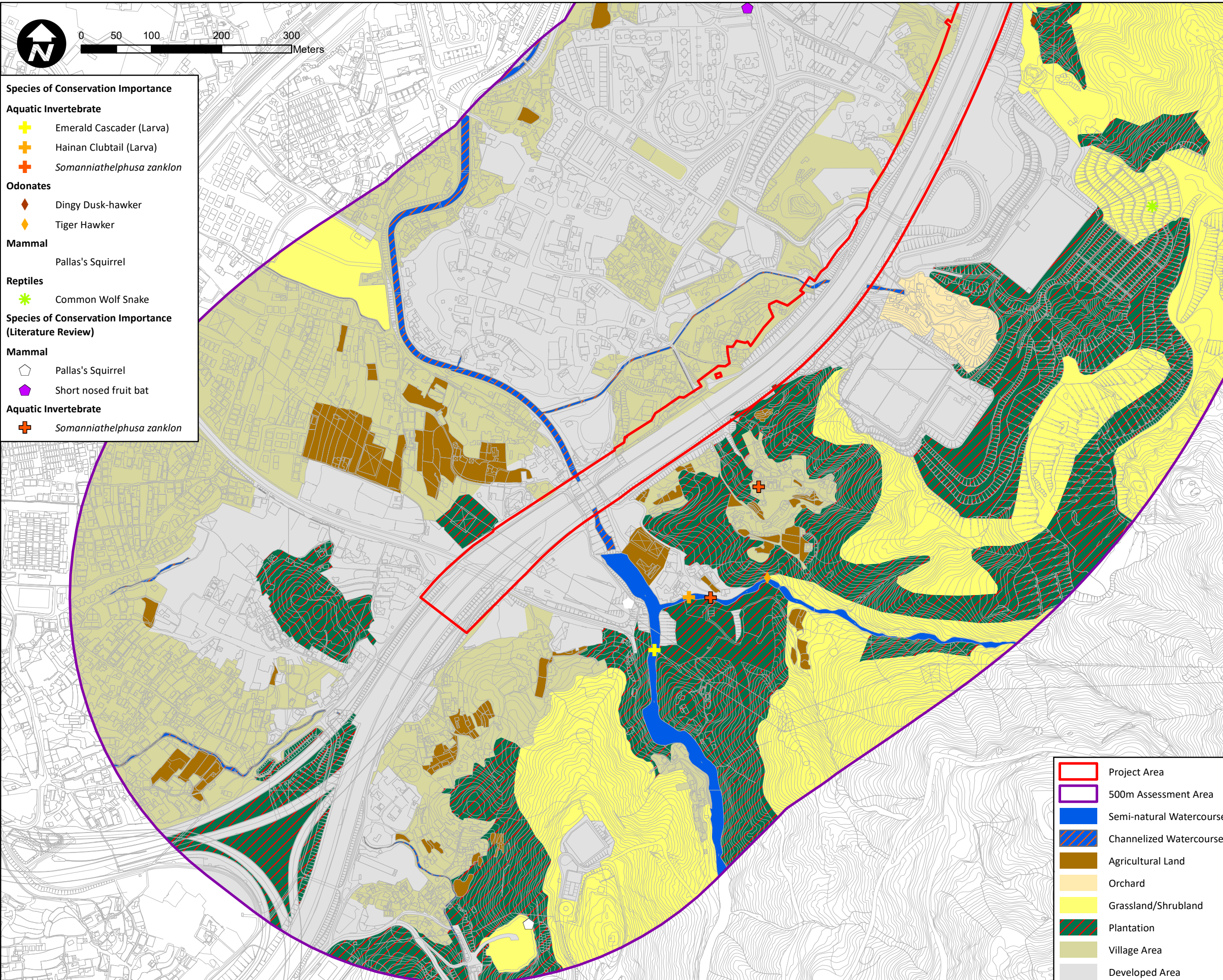
KEY PLAN
 索引圖

PROJECT NO.
 項目編號
 60695325

CONTRACT NO.
 合約編號

SHEET TITLE
 圖紙名稱
 Habitat Map and Species of Conservation Importance within 500m Assessment Area

SHEET NUMBER
 圖紙編號
 60695325/EIA/FIGURE 8.3B



- Species of Conservation Importance**
- Aquatic Invertebrate**
- + Emerald Cascader (Larva)
 - + Hainan Clubtail (Larva)
 - + *Somanniathelphusa zanklon*
- Odonates**
- ◆ Dingy Dusk-hawker
 - ◆ Tiger Hawker
- Mammal**
- ◻ Pallas's Squirrel
- Reptiles**
- * Common Wolf Snake
- Species of Conservation Importance (Literature Review)**
- Mammal**
- ◻ Pallas's Squirrel
 - ◻ Short nosed fruit bat
- Aquatic Invertebrate**
- + *Somanniathelphusa zanklon*

- Project Area
- 500m Assessment Area
- Semi-natural Watercourse
- Channelized Watercourse
- Agricultural Land
- Orchard
- Grassland/Shrubland
- Plantation
- Village Area
- Developed Area

AECOM
PROJECT
 項目
WIDENING OF YUEN LONG HIGHWAY
 (SECTION BETWEEN LAM TEI AND TONG YAN SAN TSUEN)

CLIENT
 業主
路政署
HIGHWAYS DEPARTMENT

CONSULTANT
 工程顧問公司
 AECOM Asia Company Ltd.
 www.aecom.com

SUB-CONSULTANTS
 分判工程顧問公司

ISSUE/REVISION
 修訂

I/R	DATE	DESCRIPTION	CHK.
修訂	日期	內容摘要	複核
0	24 May23		MM
1	20 Sep23		MM

STATUS
 階段

SCALE
 比例
 1:5,000 on A3

DIMENSION UNIT
 尺寸單位

KEY PLAN
 索引圖

PROJECT NO.
 項目編號
 60695325

CONTRACT NO.
 合約編號

SHEET TITLE
 圖紙名稱
 Habitat Map and Species of Conservation Importance within 500m Assessment Area

SHEET NUMBER
 圖紙編號
 60695325/EIA/FIGURE 8.3C

Document Path: D:\p\aur-yjh\Figure\MXD\20230725\Fig8.3C_Habitat and Species rev 1_20230928.mxd