

LR1	Village Settlement	LR9	Public Open Space	LR13	Pond
LR3	Brownfield Operation	LR9.2	Tan Kwai Tsuen Road Garden 丹桂村路花園		
LR4	Major Vehicular Road	LR9.10	Tan Kwai Tsuen Road Sitting-out Area 丹桂村路休憩處		
LR5	Urban Development	LR9.11	Hung Tak Road Sitting-out Area 洪德路休憩處		
LR6	Roadside Vegetation	LR10	Agricultural Land		
LR7	Plantation	LR11	Channelized Watercourse		
LR8	Shrubland/ Grassland	LR12	Natural Watercourse		

**AECOM**  
PROJECT  
WIDENING OF YUEN LONG HIGHWAY  
(SECTION BETWEEN LAM TEI AND TONG YAN SAN TSUEN)

**CLIENT**  
業主  
 路政署  
 HIGHWAYS DEPARTMENT  
**CONSULTANT**  
工程顧問公司  
AECOM Asia Company Ltd.  
www.aecom.com  
**SUB-CONSULTANTS**  
分判工程顧問公司

**ISSUE/REVISION**  
修訂

0	24 May23		GL
1	20 Sep23		GL

I/R	DATE	DESCRIPTION	CHK.
修訂	日期	內容摘要	複核

**STATUS**  
階段

**SCALE**  
比例  
1:4,500 on A3

**DIMENSION UNIT**  
尺寸單位

**KEY PLAN**  
索引圖

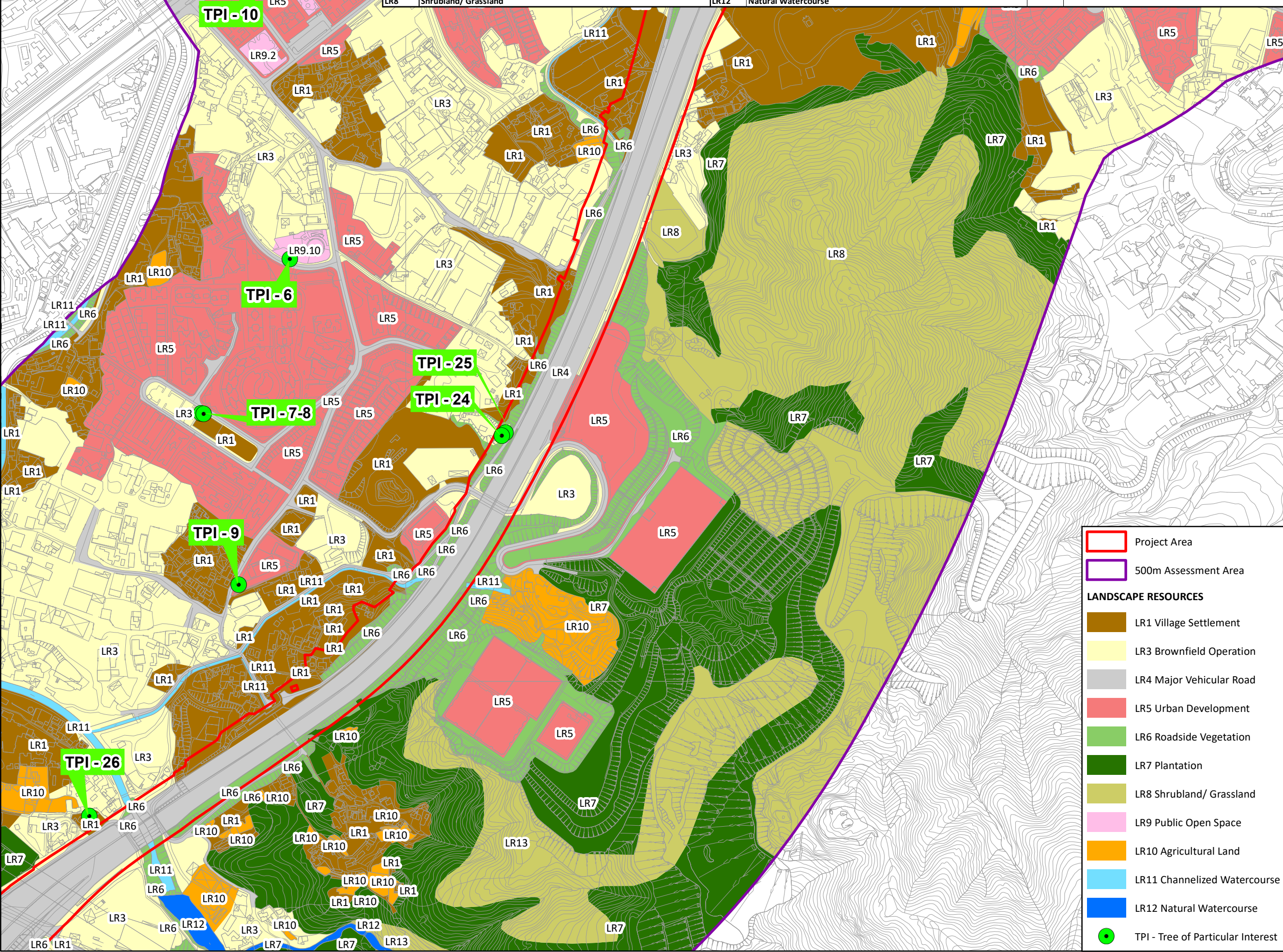
**PROJECT NO.**  
項目編號  
60695325

**CONTRACT NO.**  
合約編號

**SHEET TITLE**  
圖紙名稱

Landscape Resources(LRS)  
**SHEET NUMBER**  
圖紙編號  
60695325/EIA/FIGURE 9.3.5

Document Path: D:\p\aur-yih\Figure\LVIA\20230914\_LVIA\3\LVIA\Fig 9.3 - LR - 20230918\60695325\_EIA FIGURE 9.3.5\_LR\_20230922\_rev0.mxd



**Project Area** (Red outline)

**500m Assessment Area** (Purple outline)

**LANDSCAPE RESOURCES**

- LR1 Village Settlement
- LR3 Brownfield Operation
- LR4 Major Vehicular Road
- LR5 Urban Development
- LR6 Roadside Vegetation
- LR7 Plantation
- LR8 Shrubland/ Grassland
- LR9 Public Open Space
- LR10 Agricultural Land
- LR11 Channelized Watercourse
- LR12 Natural Watercourse
- TPI - Tree of Particular Interest (Green circle)