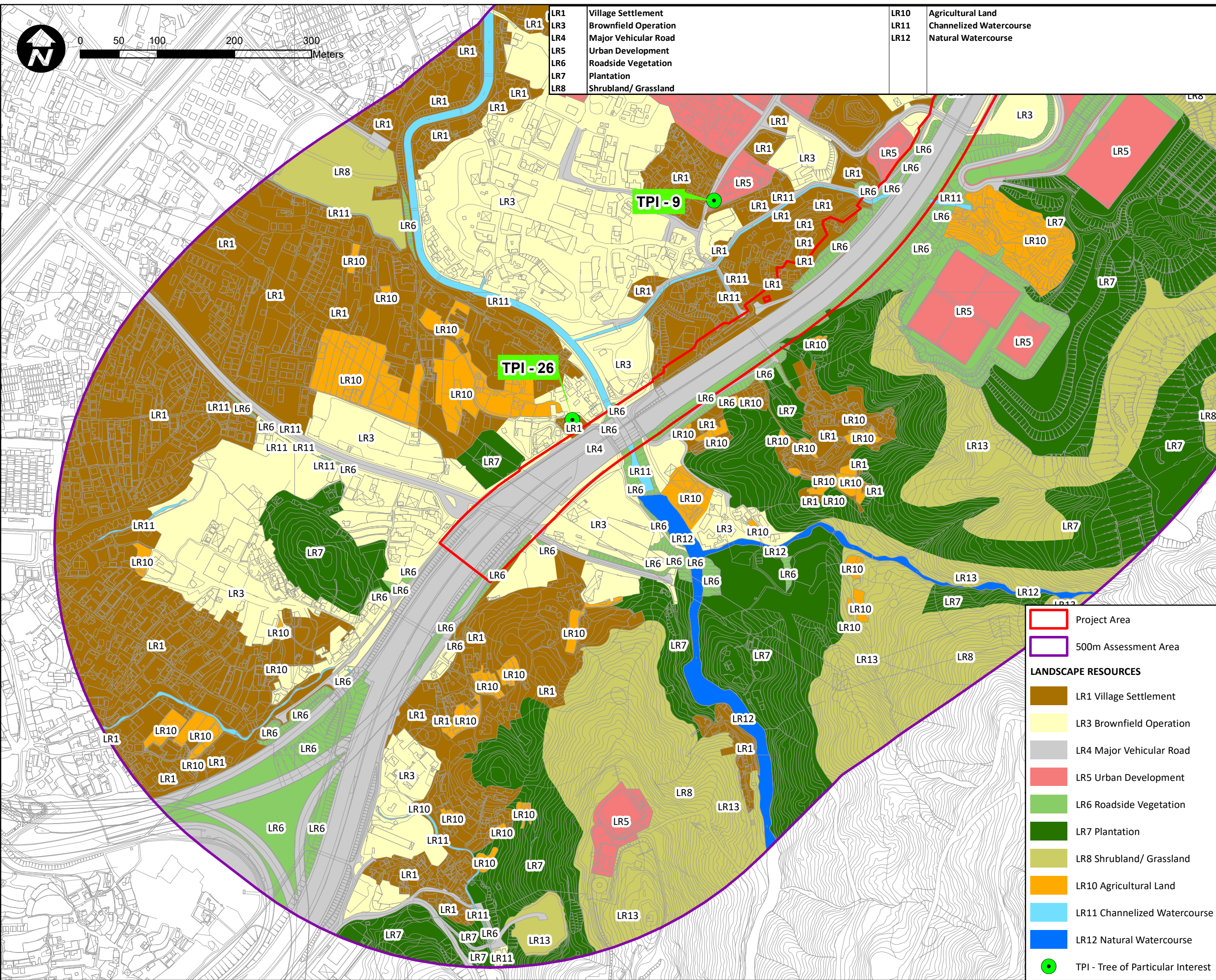


Document Path: D:\p\aur-yh\Figure\LVIA\20230914_LVIA\3\LVIA\Fig 9.3 - LR - 20230918\60695325 EIA FIGURE 9.3.6 LR 20230922_rev0.mxd



LR1	Village Settlement	LR10	Agricultural Land
LR3	Brownfield Operation	LR11	Channelized Watercourse
LR4	Major Vehicular Road	LR12	Natural Watercourse
LR5	Urban Development		
LR6	Roadside Vegetation		
LR7	Plantation		
LR8	Shrubland/ Grassland		

AECOM
PROJECT

WIDENING OF YUEN LONG HIGHWAY
(SECTION BETWEEN LAM TEI AND TONG YAN SAN TSUEN)

CLIENT
業主

路政署
HIGHWAYS DEPARTMENT

CONSULTANT
工程顧問公司

AECOM Asia Company Ltd.
www.aecom.com

SUB-CONSULTANTS
分判工程顧問公司

ISSUE/REVISION
修訂

NO.	DATE	DESCRIPTION	CHK.
0	24 May23		GL
1	20 Sep23		GL

I/R DATE DESCRIPTION CHK.
修訂日期 內容摘要 複核

STATUS
階段

SCALE 比例: 1:4,500 on A3
DIMENSION UNIT 尺寸單位

KEY PLAN
索引圖

PROJECT NO. 項目編號: 60695325
CONTRACT NO. 合約編號

SHEET TITLE
圖紙名稱

Landscape Resources(LRS)
SHEET NUMBER 圖紙編號: 60695325/EIA/FIGURE 9.3.6

Project Area (Red outline)
500m Assessment Area (Purple outline)

LANDSCAPE RESOURCES

- LR1 Village Settlement
- LR3 Brownfield Operation
- LR4 Major Vehicular Road
- LR5 Urban Development
- LR6 Roadside Vegetation
- LR7 Plantation
- LR8 Shrubland/ Grassland
- LR10 Agricultural Land
- LR11 Channelized Watercourse
- LR12 Natural Watercourse
- TPI - Tree of Particular Interest (Green circle)