

Document Path: D:\p\aur-yjh\Figure\LVIA\20230914\_LVIA\3\LVIA\Fig 9.5 - LCA - 20230918\60695325 EIA FIGURE 9.5.3 LCA\_20230922\_rev0.mxd



**PROJECT**  
 項目  
**WIDENING OF YUEN LONG HIGHWAY**  
 (SECTION BETWEEN LAM TEI AND TONG YAN SAN TSUEN)

**CLIENT**  
 業主  
 **路政署**  
**HIGHWAYS DEPARTMENT**

**CONSULTANT**  
 工程顧問公司  
 AECOM Asia Company Ltd.  
 www.aecom.com

**SUB-CONSULTANTS**  
 分判工程顧問公司

**ISSUE/REVISION**  
 修訂

No.	Date	Description	Checked by
0	24 May23		GL
1	20 Sep23		GL

I/R	DATE	DESCRIPTION	CHK.
修訂	日期	內容摘要	複核

**STATUS**  
 階段

**SCALE**  
 比例  
 1:4,500 on A3

**DIMENSION UNIT**  
 尺寸單位

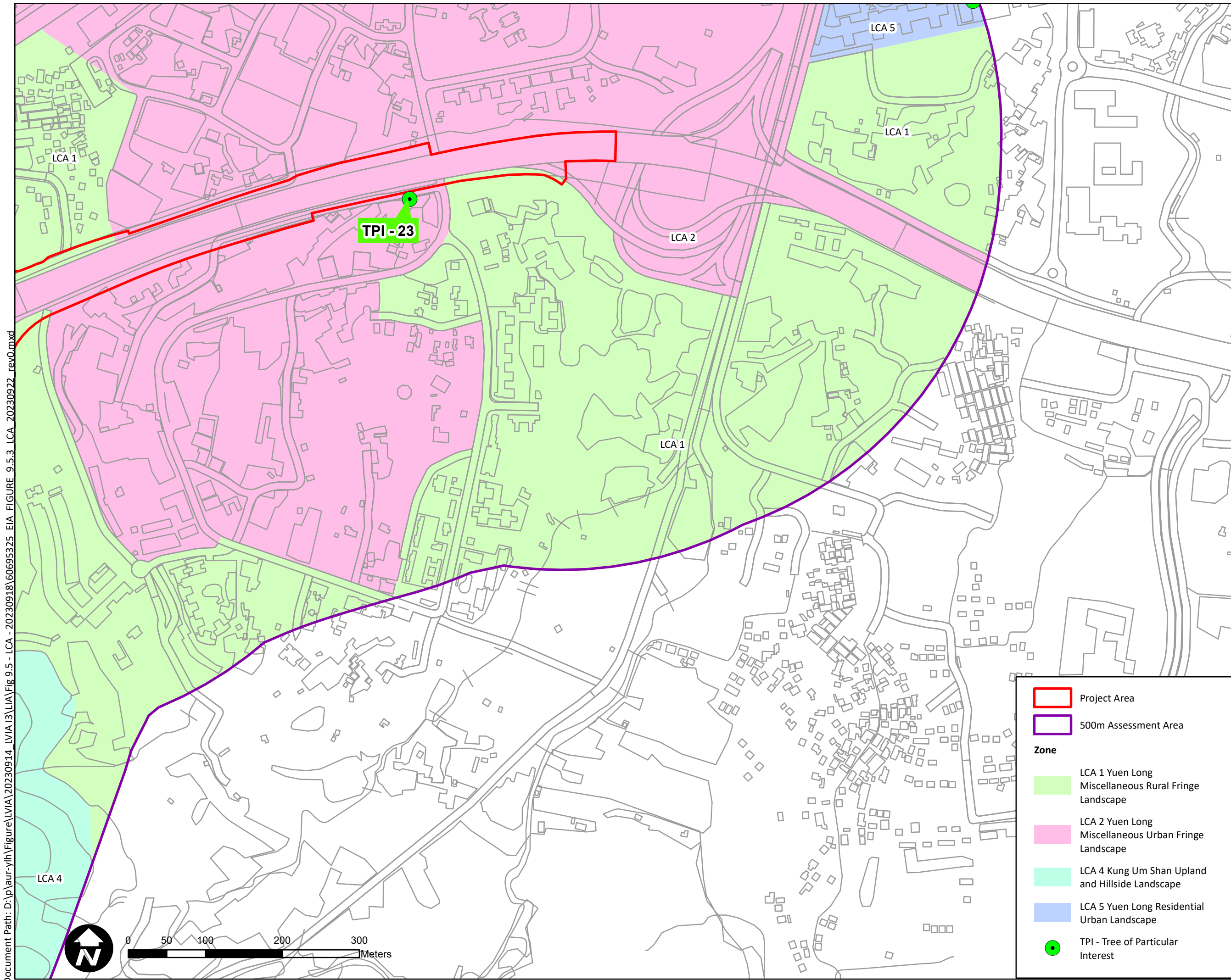
**KEY PLAN**  
 索引圖

**PROJECT NO.**  
 項目編號  
 60695325

**CONTRACT NO.**  
 合約編號

**SHEET TITLE**  
 圖紙名稱

Landscape Character Areas (LCAs)  
**SHEET NUMBER**  
 圖紙編號  
 60695325/EIA/FIGURE 9.5.3



**Project Area** (Red outline)

**500m Assessment Area** (Purple outline)

**Zone**

- LCA 1 Yuen Long Miscellaneous Rural Fringe Landscape (Green)
- LCA 2 Yuen Long Miscellaneous Urban Fringe Landscape (Pink)
- LCA 4 Kung Um Shan Upland and Hillside Landscape (Cyan)
- LCA 5 Yuen Long Residential Urban Landscape (Blue)
- TPI - Tree of Particular Interest (Green dot)