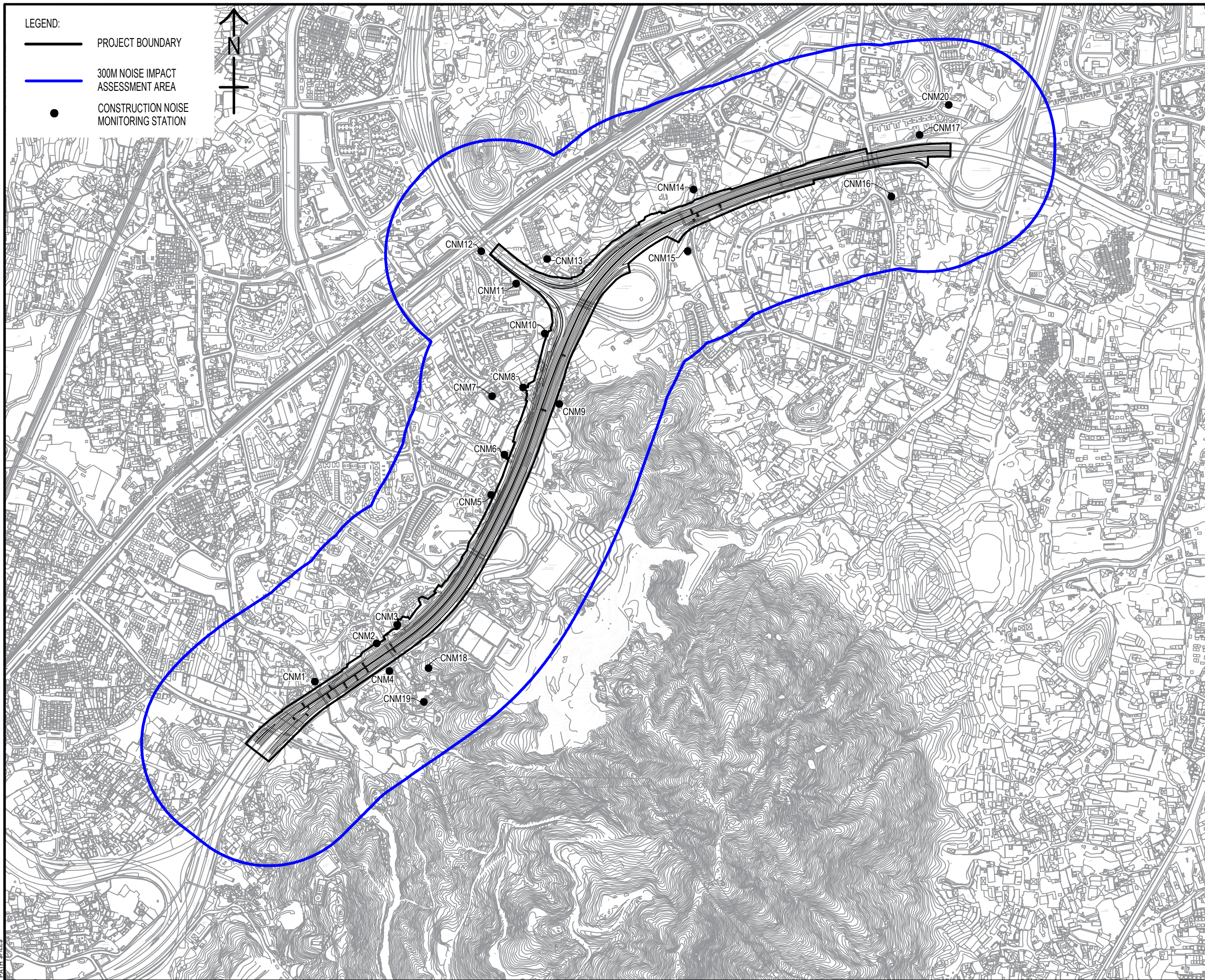


- LEGEND:**
- PROJECT BOUNDARY
  - 300M NOISE IMPACT ASSESSMENT AREA
  - CONSTRUCTION NOISE MONITORING STATION



**AECOM**

**PROJECT**  
 WIDENING OF YUEN LONG HIGHWAY  
 (SECTION BETWEEN LAM TEI AND TONG YAN SAN TSUEN)

**CLIENT**  
 路政署  
**HIGHWAYS DEPARTMENT**

**CONSULTANT**  
 AECOM Asia Company Ltd.  
 www.aecom.com

**SUB-CONSULTANTS**

**ISSUE/REVISION**

NO.	DATE	DESCRIPTION	CHK.

**STATUS**

**SCALE**  
 A1 1:11000

**DIMENSION UNIT**  
 METRES

**KEY PLAN**

**PROJECT NO.**  
 60695325

**CONTRACT NO.**  
 60695325

**SHEET TITLE**  
 LOCATIONS OF CONSTRUCTION NOISE MONITORING STATIONS

**SHEET NUMBER**  
 60695325/EM&A/FIGURE 3.1

This drawing has been prepared for the use of AECOM's client. It may not be used, modified, reproduced or relied upon by third parties, except as agreed by AECOM or as required by law. AECOM accepts no responsibility and denies any liability, whatsoever, to any party that uses or relies on this drawing without AECOM's express written consent. Do not scale this document. All measures must be obtained from the stated dimensions.