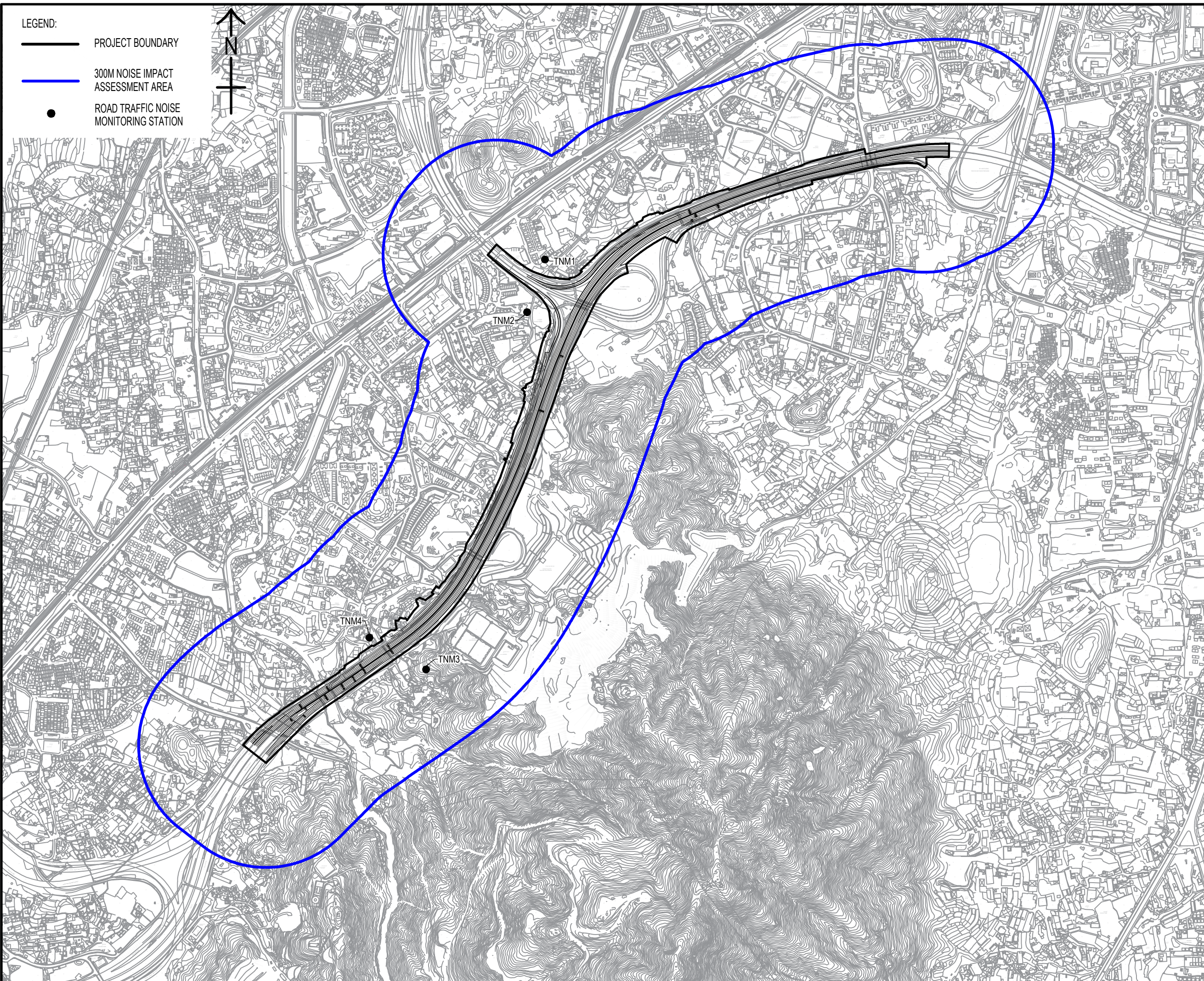


- LEGEND:**
- PROJECT BOUNDARY
 - 300M NOISE IMPACT ASSESSMENT AREA
 - ROAD TRAFFIC NOISE MONITORING STATION



This drawing has been prepared for the use of AECOM's client. It may not be used, modified, reproduced or relied upon by third parties, except as agreed by AECOM or as required by law. AECOM accepts no responsibility and denies any liability, whatsoever, to any party that uses or relies on this drawing without AECOM's express written consent. All measures must be obtained from the stated dimensions.

AECOM

PROJECT
 WIDENING OF YUEN LONG HIGHWAY
 (SECTION BETWEEN LAM TEI AND TONG YAN SAN TSUEN)

CLIENT
 路政署
 HIGHWAYS DEPARTMENT

CONSULTANT
 AECOM Asia Company Ltd.
 www.aecom.com

SUB-CONSULTANTS

ISSUE/REVISION

NO.	DATE	DESCRIPTION	CHK.

STATUS

SCALE
 A1 1:11000

DIMENSION UNIT
 METRES

KEY PLAN

PROJECT NO.
 60695325

CONTRACT NO.
 60695325

SHEET TITLE
 LOCATIONS OF TRAFFIC NOISE MONITORING STATIONS

SHEET NUMBER
 60695325/EM&A/FIGURE 3.2