

NOTE:
1. C1603/C/NOL/ACM/M52/512 AND 514 TO 522 BE READ IN CONJUNCTION.

LEGEND:

- DEVELOPMENT BOUNDARY OF PLANNED NOISE SENSITIVE RECEIVER
- PLANNED FPNSR / PLANNED ZONING
- 300m ASSESSMENT AREA
- PROPOSED RAILWAY STATION OR OTHER RAILWAY FACILITIES
- EXISTING FIXED PLANT NOISE SOURCE
- PLANNED FIXED PLANT NOISE SOURCE
- PLANNED NOISE ASSESSMENT POINT OF FIXED PLANT NOISE IMPACT ASSESSMENT
- FACING DIRECTION OF FIXED PLANT NOISE SOURCE

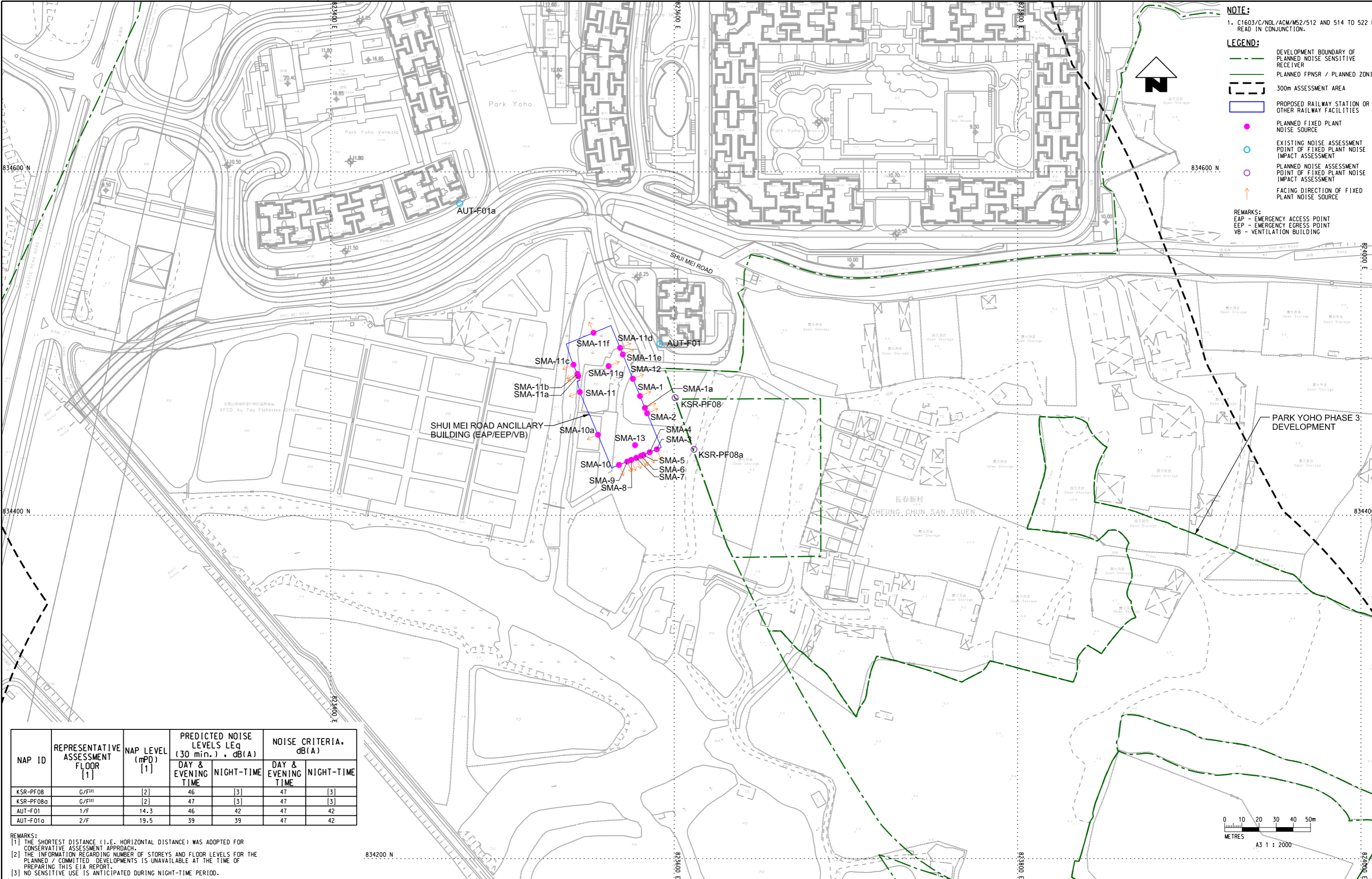
REMARK:
TOP OPENING IS ADOPTED FOR ASSESSMENT FOR PLANNED FIXED PLANT NOISE SOURCE WITH NO FACING DIRECTION INDICATED IN THIS DRAWING.

NAP ID	REPRESENTATIVE ASSESSMENT FLOOR [1]	NAP LEVEL (mPD) [1]	PREDICTED NOISE LEVELS Leq (30 min.) , dB(A)		NOISE CRITERIA, dB(A)	
			DAY & EVENING TIME	NIGHT-TIME	DAY & EVENING TIME	NIGHT-TIME
KSR-PF01a	1/F[1]	[2]	57	46	57	46
KSR-PF01b	1/F[1]	[2]	57	46	57	46
KSR-PF01c	1/F[1]	[2]	57	46	57	46
KSR-PF02a	1/F[1]	[2]	56	45	57	46
KSR-PF02b	1/F[1]	[2]	56	45	57	46
KSR-PF02c	1/F[1]	[2]	56	45	57	46
KSR-PF02d	1/F[1]	[2]	57	46	57	46
KSR-PF03a	1/F[1]	[2]	56	45	57	46
KSR-PF03b	1/F[1]	[2]	57	46	57	46
KSR-PF04	1/F[1]	[2]	53	42	57	46
KSR-PF05	1/F[1]	[2]	54	43	57	46
KSR-PF06	G/F[1]	[2]	52	[3]	57	[3]

REMARKS:
 [1] THE SHORTEST DISTANCE (I.E. HORIZONTAL DISTANCE) WAS ADOPTED FOR CONSERVATIVE ASSESSMENT APPROACH.
 [2] THE INFORMATION REGARDING NUMBER OF STOREYS AND FLOOR LEVELS FOR THE PLANNED / COMMITTED DEVELOPMENTS IS UNAVAILABLE AT THE TIME OF PREPARING THIS EIA REPORT.
 [3] NO SENSITIVE USE IS ANTICIPATED DURING NIGHT-TIME PERIOD.

P:\PROJECTS\6067406\01_CAD_ADMIN\02_JUSTIFICATION_PLOT_DRAWINGS\SS_A3_BW_COI_SYSTEM_STOPLIT.dwg
 PLOT DATE: 21/10/2023 10:24:26 AM
 PLOT BY: YFB
 PLOT FILENAME: P:\PROJECTS\6067406\04_DRAWING\REPORT\NOL\M52\C0603_C.NOL.AC.M52_513.dgn

DRAWN: YFB DESIGNED: --- CHECKED: --- APPROVED: --- DATE: 11/SEP/2023 <small>DO NOT SCALE DRAWINGS. ALL DIMENSIONS SHALL BE HEFTED ON SITE. © MTR CORPORATION LIMITED 2008. COPYRIGHT IN RESPECT OF THIS DRAWING / DOCUMENT IS OWNED BY THE MTR CORPORATION LIMITED OF HONG KONG. NO REPRODUCTION OF THE DRAWING / DOCUMENT OR ANY PART BY WHATEVER MEANS IS PERMITTED WITHOUT THE PRIOR WRITTEN CONSENT OF THE MTR CORPORATION LIMITED.</small>		ORIGINATOR: NORTHERN LINK 	TITLE: C1603 ENVIRONMENTAL IMPACT ASSESSMENT STUDY FOR NORTHERN LINK PREDICTED FIXED PLANT NOISE LEVEL AT REPRESENTATIVE LEVELS (SHEET 1 OF 10)
CADD REF.: C1603_C.NOL.AC.M52_513.dgn	SCALE: 1 : 2500 (A3)	DRAWING NO.: C1603/C/NOL/ACM/M52/513	REV: -



NOTE:
 1. C1603/C/NOL/ACM/M52/512 AND 514 TO 522 BE READ IN CONJUNCTION.

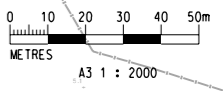
LEGEND:

- DEVELOPMENT BOUNDARY OF PLANNED NOISE SENSITIVE RECEIVER
- PLANNED FPNSR / PLANNED ZONING
- 300m ASSESSMENT AREA
- PROPOSED RAILWAY STATION OR OTHER RAILWAY FACILITIES
- PLANNED FIXED PLANT NOISE SOURCE
- EXISTING NOISE ASSESSMENT POINT OF FIXED PLANT NOISE IMPACT ASSESSMENT
- PLANNED NOISE ASSESSMENT POINT OF FIXED PLANT NOISE IMPACT ASSESSMENT
- ↑ FACING DIRECTION OF FIXED PLANT NOISE SOURCE

REMARKS:
 EAP - EMERGENCY ACCESS POINT
 EEP - EMERGENCY EGRESS POINT
 VB - VENTILATION BUILDING

NAP ID	REPRESENTATIVE ASSESSMENT FLOOR [1]	NAP LEVEL (mPD) [1]	PREDICTED NOISE LEVELS Leq (30 min.), dB(A)		NOISE CRITERIA, dB(A)	
			DAY & EVENING TIME	NIGHT-TIME	DAY & EVENING TIME	NIGHT-TIME
KSR-PF08	G/F ⁽¹⁾	[2]	46	[3]	47	[3]
KSR-PF08a	G/F ⁽¹⁾	[2]	47	[3]	47	[3]
AUT-F01	1/F	14.3	46	42	47	42
AUT-F01a	2/F	19.5	39	39	47	42

REMARKS:
 [1] THE SHORTEST DISTANCE (I.E. HORIZONTAL DISTANCE) WAS ADOPTED FOR CONSERVATIVE ASSESSMENT APPROACH.
 [2] THE INFORMATION REGARDING NUMBER OF STOREYS AND FLOOR LEVELS FOR THE PLANNED / COMMITTED DEVELOPMENTS IS UNAVAILABLE AT THE TIME OF PREPARING THIS EIA REPORT.
 [3] NO SENSITIVE USE IS ANTICIPATED DURING NIGHT-TIME PERIOD.



REV	DESCRIPTION	BY	DATE	APPROVED	REV	DESCRIPTION	BY	DATE	APPROVED

DRAWN	YFB	 NORTHERN LINK
DESIGNED	---	
CHECKED	---	
APPROVED	---	
DATE	11/SEP/2023	ORIGINATOR
<small>DO NOT SCALE DRAWINGS. ALL DIMENSIONS SHALL BE VERIFIED ON SITE. © MTR CORPORATION LIMITED 2008 COPYRIGHT IN RESPECT OF THIS DRAWING / DOCUMENT IS OWNED BY THE MTR CORPORATION LIMITED OF HONG KONG. NO REPRODUCTION OF THE DRAWING / DOCUMENT OR ANY PART BY WHATEVER MEANS IS PERMITTED WITHOUT THE PRIOR WRITTEN CONSENT OF THE MTR CORPORATION LIMITED.</small>		CADD REF. C1603_C.NOL.AC.M52_514.dgn

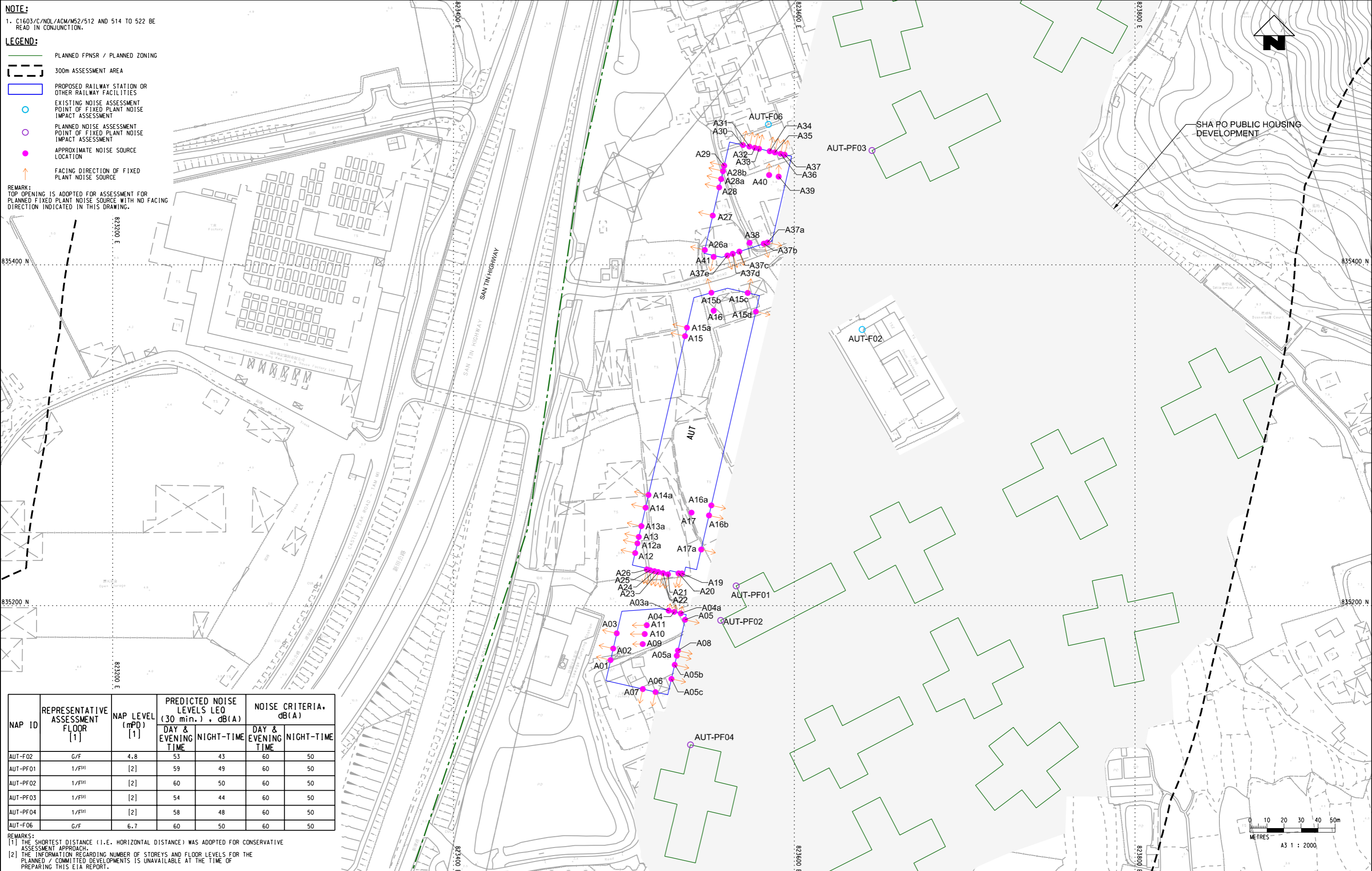
TITLE C1603 ENVIRONMENTAL IMPACT ASSESSMENT STUDY FOR NORTHERN LINK PREDICTED FIXED PLANT NOISE LEVEL AT REPRESENTATIVE LEVELS (SHEET 2 OF 10)	
SCALE	DRAWING NO.
1 : 2000(A3)	C1603/C/NOL/ACM/M52/514
REV.	---

NOTE:
 1. C1603/C/NOL/ACM/M52/512 AND 514 TO 522 BE READ IN CONJUNCTION.

LEGEND:

- PLANNED FPNSR / PLANNED ZONING
- 300m ASSESSMENT AREA
- PROPOSED RAILWAY STATION OR OTHER RAILWAY FACILITIES
- EXISTING NOISE ASSESSMENT POINT OF FIXED PLANT NOISE IMPACT ASSESSMENT
- PLANNED NOISE ASSESSMENT POINT OF FIXED PLANT NOISE IMPACT ASSESSMENT
- APPROXIMATE NOISE SOURCE LOCATION
- FACING DIRECTION OF FIXED PLANT NOISE SOURCE

REMARK:
 TOP OPENING IS ADOPTED FOR ASSESSMENT FOR PLANNED FIXED PLANT NOISE SOURCE WITH NO FACING DIRECTION INDICATED IN THIS DRAWING.



NAP ID	REPRESENTATIVE ASSESSMENT FLOOR [1]	NAP LEVEL (mPD) [1]	PREDICTED NOISE LEVELS L _{EQ} (30 min.) , dB(A)		NOISE CRITERIA, dB(A)	
			DAY & EVENING TIME	NIGHT-TIME	DAY & EVENING TIME	NIGHT-TIME
AUT-F02	G/F	4.8	53	43	60	50
AUT-PF01	1/F ^[1]	[2]	59	49	60	50
AUT-PF02	1/F ^[1]	[2]	60	50	60	50
AUT-PF03	1/F ^[1]	[2]	54	44	60	50
AUT-PF04	1/F ^[1]	[2]	58	48	60	50
AUT-F06	G/F	6.7	60	50	60	50

REMARKS:
 [1] THE SHORTEST DISTANCE (I.E. HORIZONTAL DISTANCE) WAS ADOPTED FOR CONSERVATIVE ASSESSMENT APPROACH.
 [2] THE INFORMATION REGARDING NUMBER OF STOREYS AND FLOOR LEVELS FOR THE PLANNED / COMMITTED DEVELOPMENTS IS UNAVAILABLE AT THE TIME OF PREPARING THIS EIA REPORT.

P:\PROJECTS\6067406\01_CAD_ADMIN\02_UTILITY\01_DRAWING\AS_BW_COLL_SYSTEM\PLT
 JOB NO: 2023/07/9 8:05:40
 PRINTED BY: JIM
 P:\PROJECTS\6067406\01_DRAWING\REPORT\M52\C0603_C.NOL.AC.M52_512.dgn
 PLOT DRW: MODELNAME: FILENAME:

REV	DESCRIPTION	BY	DATE	APPROVED	REV	DESCRIPTION	BY	DATE	APPROVED

DRAWN	YFB
DESIGNED	---
CHECKED	---
APPROVED	---
DATE	11/SEP/2023

MTR

NORTHERN LINK

AECOM

ORIGINATOR

CADD REF. C1603_C.NOL.AC.M52_515.dgn

TITLE

C1603
 ENVIRONMENTAL IMPACT ASSESSMENT STUDY FOR NORTHERN LINK
 PREDICTED FIXED PLANT NOISE LEVEL AT
 REPRESENTATIVE LEVELS
 (SHEET 3 OF 10)

SCALE 1 : 2000(A3)

DRAWING NO. C1603/C/NOL/ACM/M52/515

REV. -

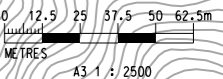
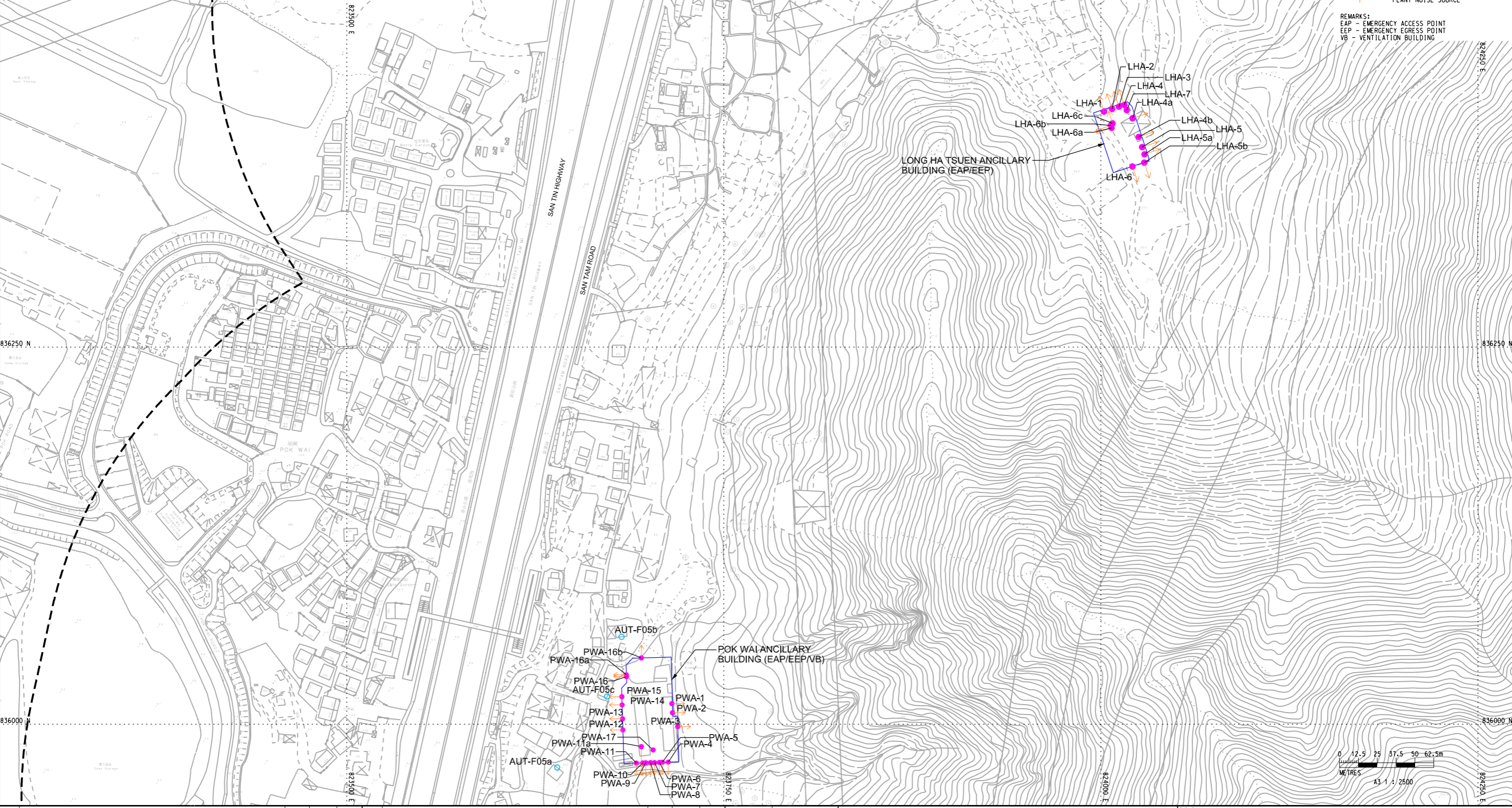
NAP ID	REPRESENTATIVE ASSESSMENT FLOOR [1]	NAP LEVEL (mPD) [1]	PREDICTED NOISE LEVELS LEO (30 min.), dB(A)		NOISE CRITERIA, dB(A)	
			DAY & EVENING TIME	NIGHT-TIME	DAY & EVENING TIME	NIGHT-TIME
AUT-F05a	G/F	13.0	54	44	60	50
AUT-F05b	G/F	15.3	53	43	60	50
AUT-F05c	G/F	15.9	60	50	60	50
NTM-F01	G/F	14.2	45	40	47	42
NTM-F02	G/F	14.1	47	42	47	42

REMARK:
[1] THE SHORTEST DISTANCE (I.E. HORIZONTAL DISTANCE) WAS ADOPTED FOR CONSERVATIVE ASSESSMENT APPROACH.

NOTE:
1. C1603/C/NOL/ACM/M52/512 AND 514 TO 522 BE READ IN CONJUNCTION.

- LEGEND:
- 300m ASSESSMENT AREA
 - PROPOSED RAILWAY STATION OR OTHER RAILWAY FACILITIES
 - PLANNED FIXED PLANT NOISE SOURCE
 - EXISTING NOISE ASSESSMENT POINT OF FIXED PLANT NOISE IMPACT ASSESSMENT
 - FACING DIRECTION OF FIXED PLANT NOISE SOURCE

REMARKS:
EAP - EMERGENCY ACCESS POINT
EEP - EMERGENCY EGRESS POINT
VB - VENTILATION BUILDING



REV	DESCRIPTION	BY	DATE	APPROVED	REV	DESCRIPTION	BY	DATE	APPROVED

DRAWN	YFB
DESIGNED	---
CHECKED	---
APPROVED	---
DATE	11/SEP/2023

ORIGINATOR
NORTHERN LINK

 CADD REF. C1603_C_NOL_ACM_M52_516.dgn

TITLE
C1603
ENVIRONMENTAL IMPACT ASSESSMENT STUDY FOR NORTHERN LINK
PREDICTED FIXED PLANT NOISE LEVEL AT
REPRESENTATIVE LEVELS
 (SHEET 4 OF 10)
 SCALE 1 : 2500 (A3) DRAWING NO. C1603/C/NOL/ACM/M52/516 REV. -

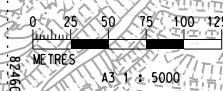
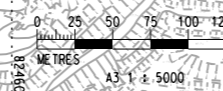
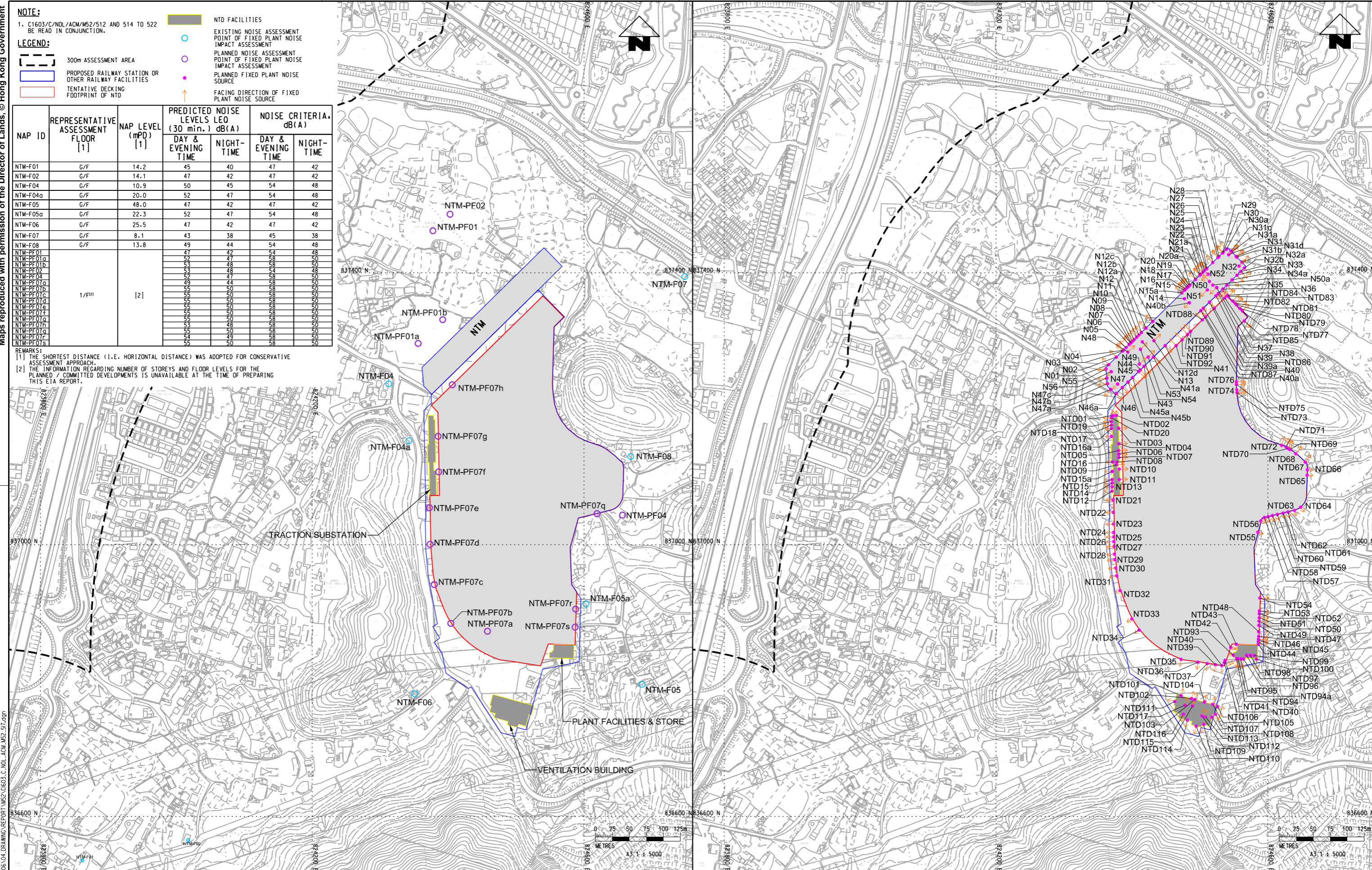
NOTE:
1. C1603/C/NOL/ACM/M52/512 AND 514 TO 522 BE READ IN CONJUNCTION.

LEGEND:

- 300m ASSESSMENT AREA
- PROPOSED RAILWAY STATION OR OTHER RAILWAY FACILITIES
- TENTATIVE DECKING FOOTPRINT OF NTD
- NTD FACILITIES
- EXISTING NOISE ASSESSMENT POINT OF FIXED PLANT NOISE IMPACT ASSESSMENT
- PLANNED NOISE ASSESSMENT POINT OF FIXED PLANT NOISE IMPACT ASSESSMENT
- PLANNED FIXED PLANT NOISE SOURCE
- FACING DIRECTION OF FIXED PLANT NOISE SOURCE

NAP ID	REPRESENTATIVE ASSESSMENT FLOOR [1]	NAP LEVEL (mPD) [1]	PREDICTED NOISE LEVELS LEO (30 min.) dB(A)		NOISE CRITERIA dB(A)	
			DAY & EVENING TIME	NIGHT-TIME	DAY & EVENING TIME	NIGHT-TIME
NTM-F01	G/F	14.2	45	40	47	42
NTM-F02	G/F	14.1	47	42	47	42
NTM-F04	G/F	10.9	50	45	54	48
NTM-F04g	G/F	20.0	52	47	54	48
NTM-F05	G/F	48.0	47	42	47	42
NTM-F05a	G/F	22.3	52	47	54	48
NTM-F06	G/F	25.5	47	42	47	42
NTM-F07	G/F	8.1	43	38	45	38
NTM-F08	G/F	13.8	49	44	54	48
NTM-PF01			47	42	54	48
NTM-PF01a			52	47	58	50
NTM-PF01b			53	48	59	51
NTM-PF02			52	47	58	50
NTM-PF03			49	44	54	48
NTM-PF04			52	47	58	50
NTM-PF04a			55	50	58	50
NTM-PF04b			52	47	58	50
NTM-PF04c			55	50	58	50
NTM-PF04d			55	50	58	50
NTM-PF04e			55	50	58	50
NTM-PF04f			55	50	58	50
NTM-PF04g			55	50	58	50
NTM-PF04h			55	50	58	50
NTM-PF04i			55	50	58	50
NTM-PF04j			55	50	58	50
NTM-PF04k			55	50	58	50
NTM-PF04l			55	50	58	50
NTM-PF04m			55	50	58	50
NTM-PF04n			55	50	58	50
NTM-PF04o			55	50	58	50
NTM-PF04p			55	50	58	50
NTM-PF04q			55	50	58	50
NTM-PF04r			55	50	58	50
NTM-PF04s			55	50	58	50
NTM-PF04t			55	50	58	50
NTM-PF04u			55	50	58	50
NTM-PF04v			55	50	58	50
NTM-PF04w			55	50	58	50
NTM-PF04x			55	50	58	50
NTM-PF04y			55	50	58	50
NTM-PF04z			55	50	58	50

REMARKS:
[1] THE SHORTEST DISTANCE (I.E. HORIZONTAL DISTANCE) WAS ADOPTED FOR CONSERVATIVE ASSESSMENT APPROACH.
[2] THE INFORMATION REGARDING NUMBER OF STOREYS AND FLOOR LEVELS FOR THE PLANNED / COMMITTED DEVELOPMENTS IS UNAVAILABLE AT THE TIME OF PREPARING THIS EIA REPORT.



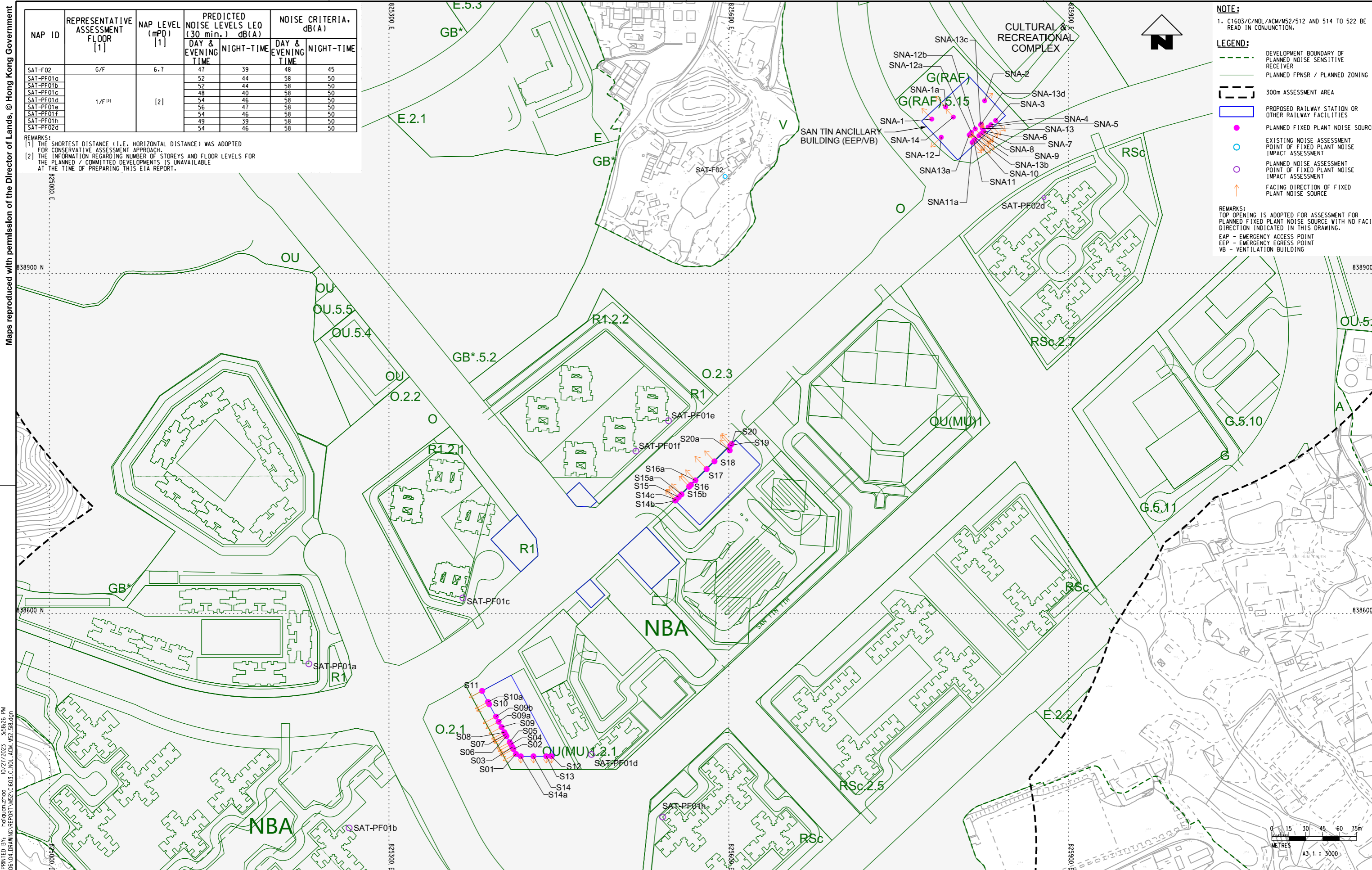
P:\PROJECTS\6067406\01_CAD_ADMIN\02_UTILITY\01_PLOT_DRIVE\A3_BW_COL_SYSTEM\PLT.DWG
 DATE: 2023/07/19
 FILENAME: P:\PROJECTS\6067406\04_DRAWING\REPORT\M52_C0603_C.NOL_ACM_M52_517.dgn

REV	DESCRIPTION	BY	DATE	APPROVED	REV	DESCRIPTION	BY	DATE	APPROVED

DRAWN	YFB		NORTHERN LINK 	TITLE C1603 ENVIRONMENTAL IMPACT ASSESSMENT STUDY FOR NORTHERN LINK PREDICTED FIXED PLANT NOISE LEVEL AT REPRESENTATIVE LEVELS (SHEET 5 OF 10)	
DESIGNED	---				
CHECKED	---				
APPROVED	---				
DATE	11/SEP/2023	ORIGINATOR		SCALE	1 : 5000 (A3)
DO NOT SCALE DRAWINGS. ALL DIMENSIONS SHALL BE HEARD ON SITE. © MTR CORPORATION LIMITED 2008. COPYRIGHT IN RESPECT OF THIS DRAWING / DOCUMENT IS OWNED BY THE MTR CORPORATION LIMITED OF HONG KONG. NO REPRODUCTION OF THE DRAWING / DOCUMENT OR ANY PART BY WHATEVER MEANS IS PERMITTED WITHOUT THE PRIOR WRITTEN CONSENT OF THE MTR CORPORATION LIMITED.					CADD REF. C1603_C.NOL_ACM_M52_517.dgn
				DRAWING NO.	C1603/C/NOL/ACM/M52/517
				REV.	-

NAP ID	REPRESENTATIVE ASSESSMENT FLOOR (1)	NAP LEVEL (mPD) (1)	PREDICTED NOISE LEVELS LEO (30 min.) dB(A)		NOISE CRITERIA dB(A)	
			DAY & EVENING TIME	NIGHT-TIME	DAY & EVENING TIME	NIGHT-TIME
SAT-F02	G/F	6.7	47	39	48	45
SAT-PF01a			52	44	58	50
SAT-PF01b			52	44	58	50
SAT-PF01c			48	40	58	50
SAT-PF01d	1/F (2)	[2]	54	46	58	50
SAT-PF01e			56	47	58	50
SAT-PF01f			54	46	58	50
SAT-PF01g			49	39	58	50
SAT-PF02d			54	46	58	50

REMARKS:
 (1) THE SHORTEST DISTANCE (I.E. HORIZONTAL DISTANCE) WAS ADOPTED FOR CONSERVATIVE ASSESSMENT APPROACH.
 (2) THE INFORMATION REGARDING NUMBER OF STOREYS AND FLOOR LEVELS FOR THE PLANNED / COMMITTED DEVELOPMENTS IS UNAVAILABLE AT THE TIME OF PREPARING THIS EIA REPORT.



NOTE:
 1. C1603/C/NOL/ACM/M52/512 AND 514 TO 522 BE READ IN CONJUNCTION.

LEGEND:

- DEVELOPMENT BOUNDARY OF PLANNED NOISE SENSITIVE RECEIVER
- PLANNED FPNSR / PLANNED ZONING
- 300m ASSESSMENT AREA
- PROPOSED RAILWAY STATION OR OTHER RAILWAY FACILITIES
- PLANNED FIXED PLANT NOISE SOURCE
- EXISTING NOISE ASSESSMENT POINT OF FIXED PLANT NOISE IMPACT ASSESSMENT
- PLANNED NOISE ASSESSMENT POINT OF FIXED PLANT NOISE IMPACT ASSESSMENT
- ↑ FACING DIRECTION OF FIXED PLANT NOISE SOURCE

REMARKS:
 TOP OPENING IS ADOPTED FOR ASSESSMENT FOR PLANNED FIXED PLANT NOISE SOURCE WITH NO FACING DIRECTION INDICATED IN THIS DRAWING.
 EAP - EMERGENCY ACCESS POINT
 EEP - EMERGENCY EGRESS POINT
 VB - VENTILATION BUILDING

PLOT DRW: P:\PROJECTS\6067406\01_CAD_ADMIN\02_UTILITY\01_DRAWING\A3_DWG_COLL_SYSTEM\PLT
 DATE: 10/27/2023 3:58:26 PM
 FILENAME: P:\PROJECTS\6067406\04_DRAWING\REPORT\M52_C1603_C_NOL_ACM_M52_518.dgn

DRAWN: YFB		MTR		NORTHERN LINK		TITLE: C1603 ENVIRONMENTAL IMPACT ASSESSMENT STUDY FOR NORTHERN LINK PREDICTED FIXED PLANT NOISE LEVEL AT REPRESENTATIVE LEVELS (SHEET 6 OF 10)	
DESIGNED: ---		ORIGINATOR: AECOM		SCALE: 1 : 3000 (A3)		DRAWING NO.: C1603/C/NOL/ACM/M52/518	
CHECKED: ---		DATE: 11/SEP/2023		CADD REF.: C1603_C_NOL_ACM_M52_518.dgn		REV: -	
APPROVED: TS		DO NOT SCALE DRAWINGS. ALL DIMENSIONS SHALL BE HEATED ON SITE.		REPRODUCTION OF THIS DRAWING OR ANY PART BY WHATEVER MEANS IS PERMITTED WITHOUT THE PRIOR WRITTEN CONSENT OF THE MTR CORPORATION LIMITED.			
BY: _____		BY: _____		BY: _____		BY: _____	
DATE: _____		DATE: _____		DATE: _____		DATE: _____	
APPROVED: _____		APPROVED: _____		APPROVED: _____		APPROVED: _____	
REV: _____		REV: _____		REV: _____		REV: _____	

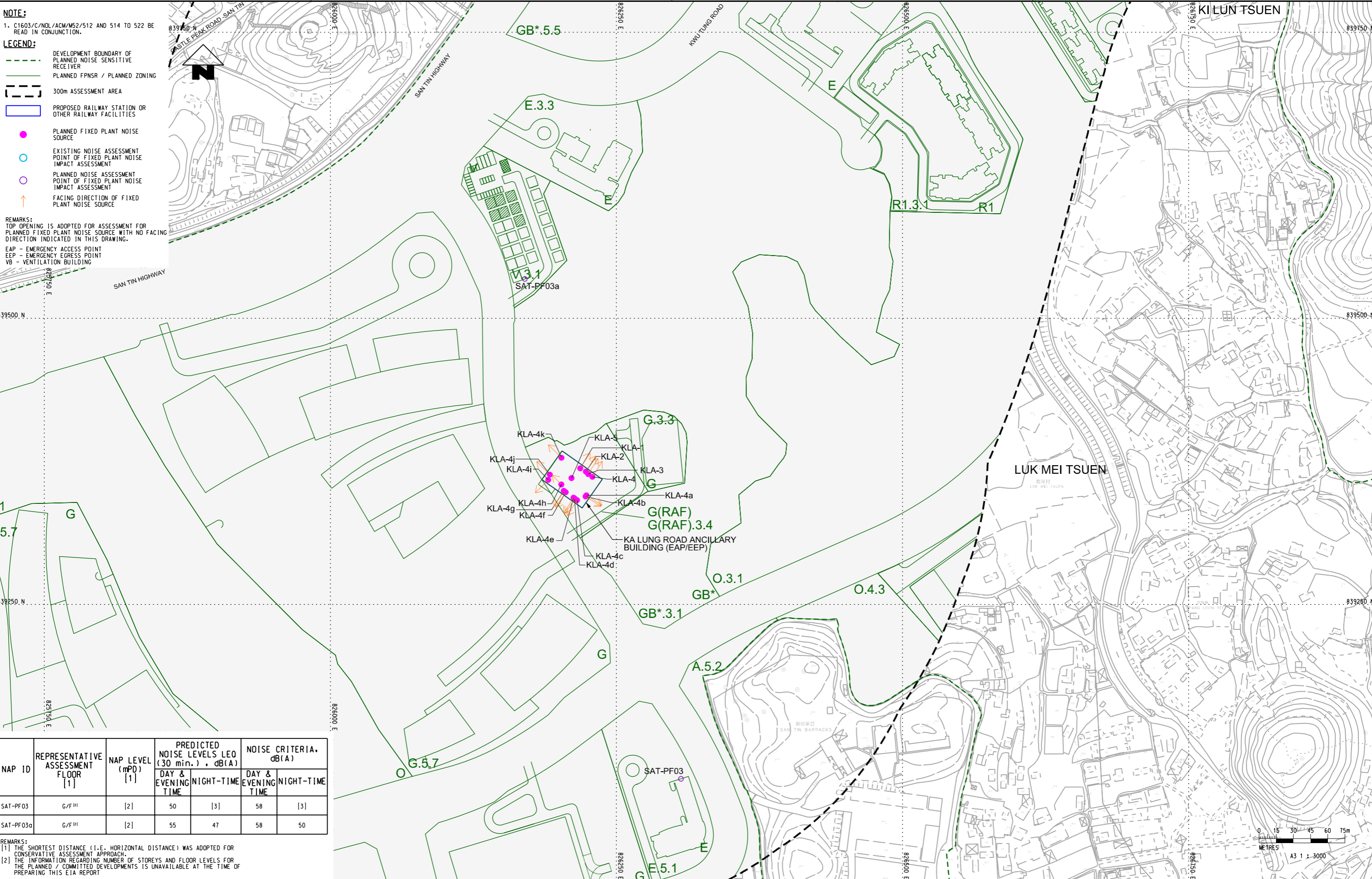
NOTE:
1. C1603/C/NOL/ACM/M52/512 AND 514 TO 522 BE READ IN CONJUNCTION.

LEGEND:

- DEVELOPMENT BOUNDARY OF PLANNED NOISE SENSITIVE RECEIVER
- PLANNED FPNSR / PLANNED ZONING
- 300m ASSESSMENT AREA
- PROPOSED RAILWAY STATION OR OTHER RAILWAY FACILITIES
- PLANNED FIXED PLANT NOISE SOURCE
- EXISTING NOISE ASSESSMENT POINT OF FIXED PLANT NOISE IMPACT ASSESSMENT
- PLANNED NOISE ASSESSMENT POINT OF FIXED PLANT NOISE IMPACT ASSESSMENT
- ↑ FACING DIRECTION OF FIXED PLANT NOISE SOURCE

REMARKS:
TOP OPENING IS ADOPTED FOR ASSESSMENT FOR PLANNED FIXED PLANT NOISE SOURCE WITH NO FACING DIRECTION INDICATED IN THIS DRAWING.

EAP - EMERGENCY ACCESS POINT
EEP - EMERGENCY EGRESS POINT
VB - VENTILATION BUILDING



NAP ID	REPRESENTATIVE ASSESSMENT FLOOR [1]	NAP LEVEL (mPD) [1]	PREDICTED NOISE LEVELS LEO (30 min.) , dB(A)		NOISE CRITERIA, dB(A)	
			DAY & EVENING TIME	NIGHT-TIME	DAY & EVENING TIME	NIGHT-TIME
SAT-PF03	G/F [2]	[2]	50	[3]	58	[3]
SAT-PF03a	G/F [2]	[2]	55	47	58	50

REMARKS:
 [1] THE SHORTEST DISTANCE (I.E. HORIZONTAL DISTANCE) WAS ADOPTED FOR CONSERVATIVE ASSESSMENT APPROACH.
 [2] THE INFORMATION REGARDING NUMBER OF STOREYS AND FLOOR LEVELS FOR THE PLANNED / COMMITTED DEVELOPMENTS IS UNAVAILABLE AT THE TIME OF PREPARING THIS EIA REPORT

REV	DESCRIPTION	BY	DATE	APPROVED	REV	DESCRIPTION	BY	DATE	APPROVED

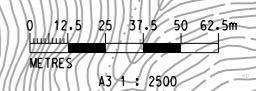
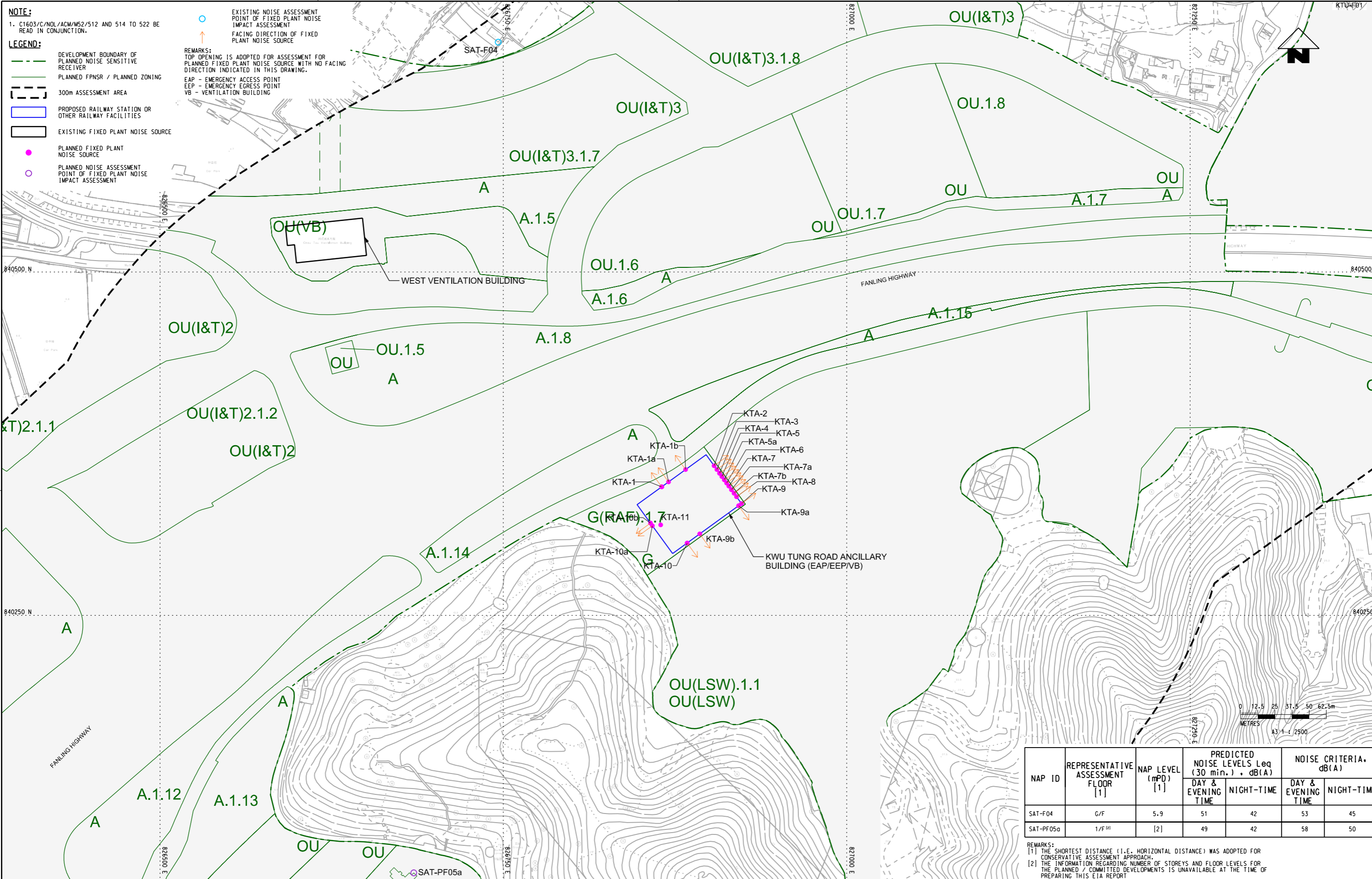
DRAWN	YFB	 NORTHERN LINK
DESIGNED	---	
CHECKED	---	
APPROVED	TS	
DATE	11/SEP/2023	
DO NOT SCALE DRAWINGS. ALL DIMENSIONS SHALL BE VERIFIED ON SITE. © MTR CORPORATION LIMITED 2008. COPYRIGHT IN RESPECT OF THIS DRAWING / DOCUMENT IS OWNED BY THE MTR CORPORATION LIMITED OF HONG KONG. NO REPRODUCTION OF THE DRAWING / DOCUMENT OR ANY PART BY WHATEVER MEANS IS PERMITTED WITHOUT THE PRIOR WRITTEN CONSENT OF THE MTR CORPORATION LIMITED.		ORIGINATOR
CADD REF.		C1603_C_NOL_ACM_M52_519.dgn

TITLE C1603 ENVIRONMENTAL IMPACT ASSESSMENT STUDY FOR NORTHERN LINK PREDICTED FIXED PLANT NOISE LEVEL AT REPRESENTATIVE LEVELS (SHEET 7 OF 10)	
SCALE	DRAWING NO.
1 : 3000 (A3)	C1603/C/NOL/ACM/M52/519
REV.	---

NOTE:
1. C1603/C/NOL/ACM/M52/512 AND 514 TO 522 BE READ IN CONJUNCTION.

- LEGEND:**
- DEVELOPMENT BOUNDARY OF PLANNED NOISE SENSITIVE RECEIVER
 - PLANNED FPNSR / PLANNED ZONING
 - 300m ASSESSMENT AREA
 - PROPOSED RAILWAY STATION OR OTHER RAILWAY FACILITIES
 - EXISTING FIXED PLANT NOISE SOURCE
 - PLANNED FIXED PLANT NOISE SOURCE
 - PLANNED NOISE ASSESSMENT POINT OF FIXED PLANT NOISE IMPACT ASSESSMENT

REMARKS:
TOP OPENING IS ADOPTED FOR ASSESSMENT FOR PLANNED FIXED PLANT NOISE SOURCE WITH NO FACING DIRECTION INDICATED IN THIS DRAWING.
EAP - EMERGENCY ACCESS POINT
EEP - EMERGENCY EGRESS POINT
VB - VENTILATION BUILDING



NAP ID	REPRESENTATIVE ASSESSMENT FLOOR [1]	NAP LEVEL (mPD) [1]	PREDICTED NOISE LEVELS Leq (30 min.) • dB(A)		NOISE CRITERIA • dB(A)	
			DAY & EVENING TIME	NIGHT-TIME	DAY & EVENING TIME	NIGHT-TIME
SAT-F04	G/F	5.9	51	42	53	45
SAT-PF05a	1/F ^[2]	[2]	49	42	58	50

REMARKS:
[1] THE SHORTEST DISTANCE (I.E. HORIZONTAL DISTANCE) WAS ADOPTED FOR CONSERVATIVE ASSESSMENT APPROACH.
[2] THE INFORMATION REGARDING NUMBER OF STOREYS AND FLOOR LEVELS FOR THE PLANNED / COMMITTED DEVELOPMENTS IS UNAVAILABLE AT THE TIME OF PREPARING THIS EIA REPORT.

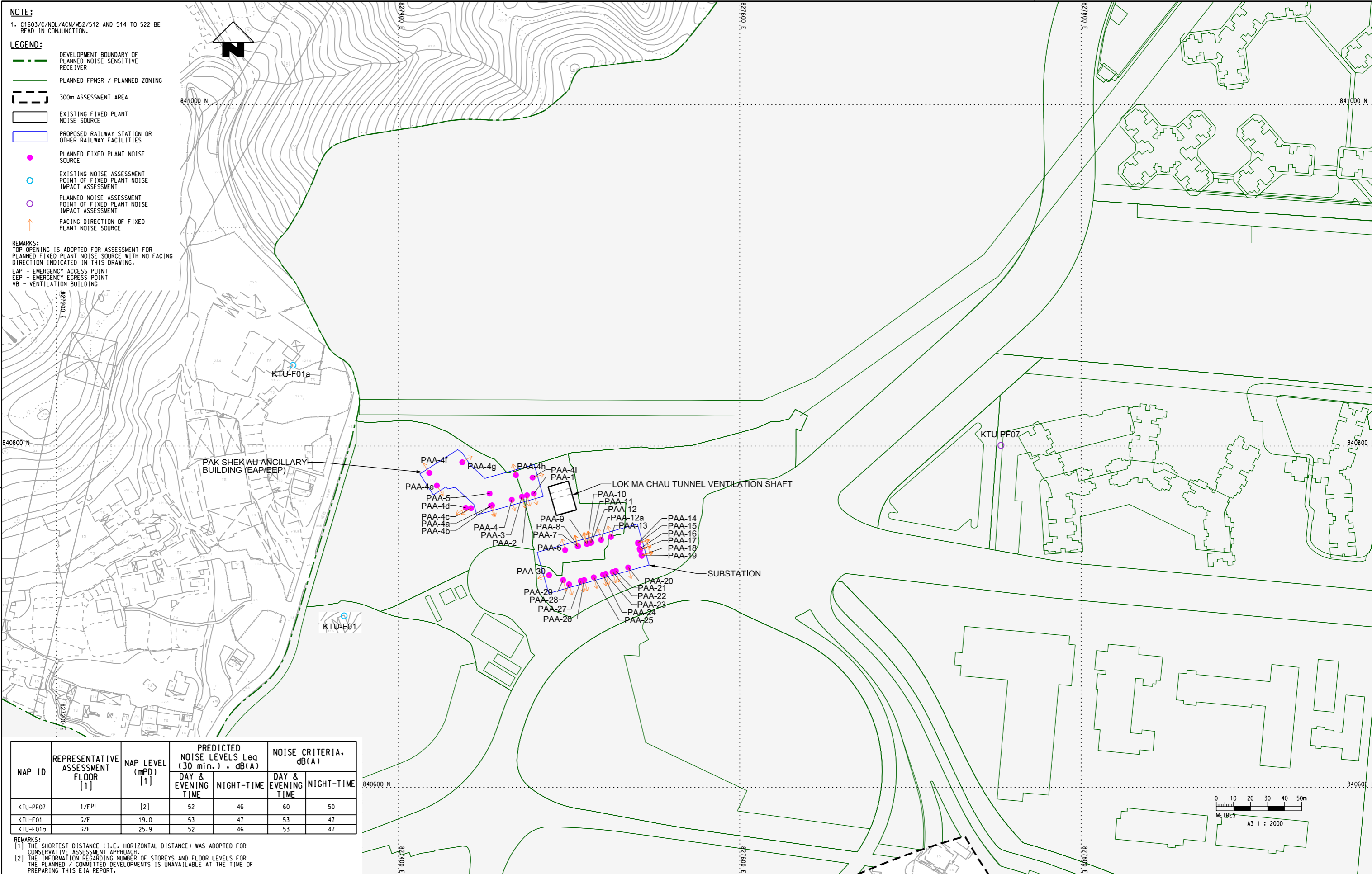
P:\PROJECTS\6061406\01_CAD_ADMIN\02_UTILITY\STATION\PLANT_DRAWING\A3_DWG_COL_SYSTEM\PLT
 08/27/2023 13:59:17 PM
 P:\PROJECTS\6061406\04_DRAWING\REPORT\M52_C1603_C_NOL_ACM_M52_520.dgn
 MODELNAME: SAT-PF05a

<table border="1" style="width: 100%; border-collapse: collapse;"> <tr><td style="width: 10%;">DRAWN</td><td>YFB</td></tr> <tr><td>DESIGNED</td><td>---</td></tr> <tr><td>CHECKED</td><td>---</td></tr> <tr><td>APPROVED</td><td>TS</td></tr> <tr><td>DATE</td><td>11/SEP/2023</td></tr> </table> <p style="font-size: small;">DO NOT SCALE DRAWINGS. ALL DIMENSIONS SHALL BE VERIFIED ON SITE. © MTR CORPORATION LIMITED 2008. COPYRIGHT IN RESPECT OF THIS DRAWING / DOCUMENT IS OWNED BY THE MTR CORPORATION LIMITED OF HONG KONG. NO REPRODUCTION OF THE DRAWING / DOCUMENT OR ANY PART BY WHATEVER MEANS IS PERMITTED WITHOUT THE PRIOR WRITTEN CONSENT OF THE MTR CORPORATION LIMITED.</p>	DRAWN	YFB	DESIGNED	---	CHECKED	---	APPROVED	TS	DATE	11/SEP/2023	 NORTHERN LINK 	<table border="1" style="width: 100%; border-collapse: collapse;"> <tr><td colspan="2" style="text-align: center;">TITLE</td></tr> <tr><td colspan="2" style="text-align: center;">C1603 ENVIRONMENTAL IMPACT ASSESSMENT STUDY FOR NORTHERN LINK PREDICTED FIXED PLANT NOISE LEVEL AT REPRESENTATIVE LEVELS (SHEET 8 OF 10)</td></tr> <tr><td style="width: 20%;">SCALE</td><td>1 : 2500 (A3)</td></tr> <tr><td style="width: 20%;">DRAWING NO.</td><td>C1603/C/NOL/ACM/M52/520</td></tr> <tr><td style="width: 20%;">REV.</td><td>---</td></tr> </table>	TITLE		C1603 ENVIRONMENTAL IMPACT ASSESSMENT STUDY FOR NORTHERN LINK PREDICTED FIXED PLANT NOISE LEVEL AT REPRESENTATIVE LEVELS (SHEET 8 OF 10)		SCALE	1 : 2500 (A3)	DRAWING NO.	C1603/C/NOL/ACM/M52/520	REV.	---
DRAWN	YFB																					
DESIGNED	---																					
CHECKED	---																					
APPROVED	TS																					
DATE	11/SEP/2023																					
TITLE																						
C1603 ENVIRONMENTAL IMPACT ASSESSMENT STUDY FOR NORTHERN LINK PREDICTED FIXED PLANT NOISE LEVEL AT REPRESENTATIVE LEVELS (SHEET 8 OF 10)																						
SCALE	1 : 2500 (A3)																					
DRAWING NO.	C1603/C/NOL/ACM/M52/520																					
REV.	---																					
<table border="1" style="width: 100%; border-collapse: collapse;"> <tr><td style="width: 10%;">CADD REF.</td><td>C1603_C_NOL_ACM_M52_520.dgn</td></tr> </table>	CADD REF.	C1603_C_NOL_ACM_M52_520.dgn																				
CADD REF.	C1603_C_NOL_ACM_M52_520.dgn																					
<table border="1" style="width: 100%; border-collapse: collapse;"> <tr><td style="width: 10%;">REV</td><td style="width: 10%;">DESCRIPTION</td><td style="width: 10%;">BY</td><td style="width: 10%;">DATE</td><td style="width: 10%;">APPROVED</td><td style="width: 10%;">REV</td><td style="width: 10%;">DESCRIPTION</td><td style="width: 10%;">BY</td><td style="width: 10%;">DATE</td><td style="width: 10%;">APPROVED</td></tr> <tr><td> </td><td> </td><td> </td><td> </td><td> </td><td> </td><td> </td><td> </td><td> </td><td> </td></tr> </table>	REV	DESCRIPTION	BY	DATE	APPROVED	REV	DESCRIPTION	BY	DATE	APPROVED												
REV	DESCRIPTION	BY	DATE	APPROVED	REV	DESCRIPTION	BY	DATE	APPROVED													

NOTE:
1. C1603/C/NOL/ACM/M52/512 AND 514 TO 522 BE READ IN CONJUNCTION.

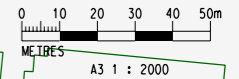
- LEGEND:**
- DEVELOPMENT BOUNDARY OF PLANNED NOISE SENSITIVE RECEIVER
 - PLANNED FPNSR / PLANNED ZONING
 - 300m ASSESSMENT AREA
 - EXISTING FIXED PLANT NOISE SOURCE
 - PROPOSED RAILWAY STATION OR OTHER RAILWAY FACILITIES
 - PLANNED FIXED PLANT NOISE SOURCE
 - EXISTING NOISE ASSESSMENT POINT OF FIXED PLANT NOISE IMPACT ASSESSMENT
 - PLANNED NOISE ASSESSMENT POINT OF FIXED PLANT NOISE IMPACT ASSESSMENT
 - ↑ FACING DIRECTION OF FIXED PLANT NOISE SOURCE

REMARKS:
TOP OPENING IS ADOPTED FOR ASSESSMENT FOR PLANNED FIXED PLANT NOISE SOURCE WITH NO FACING DIRECTION INDICATED IN THIS DRAWING.
EAP - EMERGENCY ACCESS POINT
EEP - EMERGENCY EGRESS POINT
VB - VENTILATION BUILDING



NAP ID	REPRESENTATIVE ASSESSMENT FLOOR [1]	NAP LEVEL (mPD) [1]	PREDICTED NOISE LEVELS Leq (30 min.), dB(A)		NOISE CRITERIA, dB(A)	
			DAY & EVENING TIME	NIGHT-TIME	DAY & EVENING TIME	NIGHT-TIME
KTU-PF07	1/F [1]	[2]	52	46	60	50
KTU-F01	G/F	19.0	53	47	53	47
KTU-F01a	G/F	25.9	52	46	53	47

REMARKS:
[1] THE SHORTEST DISTANCE (I.E. HORIZONTAL DISTANCE) WAS ADOPTED FOR CONSERVATIVE ASSESSMENT APPROACH.
[2] THE INFORMATION REGARDING NUMBER OF STOREYS AND FLOOR LEVELS FOR THE PLANNED / COMMITTED DEVELOPMENTS IS UNAVAILABLE AT THE TIME OF PREPARING THIS EIA REPORT.



REV	DESCRIPTION	BY	DATE	APPROVED	REV	DESCRIPTION	BY	DATE	APPROVED

DRAWN	YFB
DESIGNED	---
CHECKED	---
APPROVED	---
DATE	11/SEP/2023

MTR

NORTHERN LINK

AECOM

ORIGINATOR

CADD REF. C1603_C.NOL.AC.M52_521.dgn

TITLE	
C1603 ENVIRONMENTAL IMPACT ASSESSMENT STUDY FOR NORTHERN LINK PREDICTED FIXED PLANT NOISE LEVEL AT REPRESENTATIVE LEVELS (SHEET 9 OF 10)	
SCALE	DRAWING NO.
1 : 2000(A3)	C1603/C/NOL/ACM/M52/521
REV.	---

NAP ID	REPRESENTATIVE ASSESSMENT FLOOR [1]	NAP LEVEL (mPD) [1]	PREDICTED NOISE LEVELS Leq (30 min.) , dB(A)		NOISE CRITERIA, dB(A)	
			DAY & EVENING TIME	NIGHT-TIME	DAY & EVENING TIME	NIGHT-TIME
KTU-PF01a	1/FH	[2]	51	42	60	50
KTU-PF01b			51	42	60	50
KTU-PF01c			51	42	60	50
KTU-PF02a			59	48	60	50
KTU-PF02b			57	47	60	50
KTU-PF03a			49	40	60	50
KTU-PF03b			50	40	60	50
KTU-PF04a			52	41	60	50
KTU-PF04b			53	43	60	50
KTU-PF05a			50	40	60	50
KTU-PF05b			49	39	60	50
KTU-PF06a			58	48	60	50
KTU-PF06b	59	48	60	50		
KTU-PF06c	52	42	60	50		

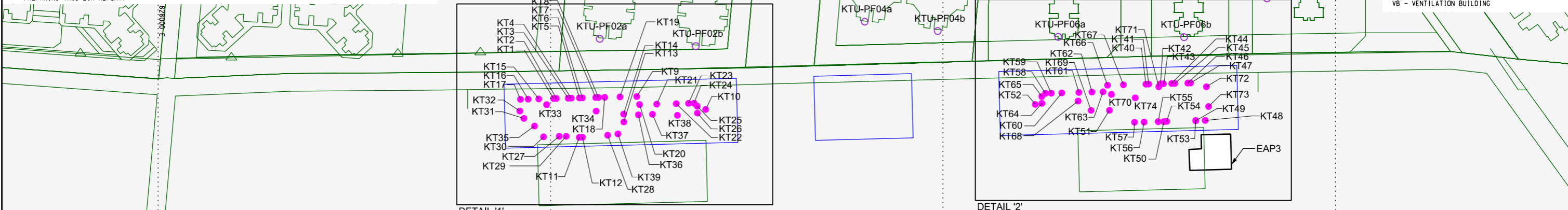
REMARKS:
 [1] THE SHORTEST DISTANCE (I.E. HORIZONTAL DISTANCE) WAS ADOPTED FOR CONSERVATIVE ASSESSMENT APPROACH.
 [2] THE INFORMATION REGARDING NUMBER OF STOREYS AND FLOOR LEVELS FOR THE PLANNED / COMMITTED DEVELOPMENTS IS UNAVAILABLE AT THE TIME OF PREPARING THIS EIA REPORT.

NOTE:
 1. C1603/C/NOL/ACM/M52/512 AND 514 TO 522 BE READ IN CONJUNCTION.

LEGEND:

- PLANNED FPNSR / PLANNED ZONING
- 300m ASSESSMENT AREA
- EXISTING FIXED PLANT NOISE SOURCE
- PROPOSED RAILWAY STATION OR OTHER RAILWAY FACILITIES
- PLANNED NOISE ASSESSMENT POINT OF FIXED PLANT NOISE IMPACT ASSESSMENT
- PLANNED FIXED PLANT NOISE SOURCE
- ↑ FACING DIRECTION OF FIXED PLANT NOISE SOURCE

REMARKS:
 TOP OPENING IS ADOPTED FOR ASSESSMENT FOR PLANNED FIXED PLANT NOISE SOURCE WITH NO FACING DIRECTION INDICATED IN THIS DRAWING.
 EAP - EMERGENCY ACCESS POINT
 EEP - EMERGENCY EGRESS POINT
 VB - VENTILATION BUILDING



P:\PROJECTS\6067406\01_CAD_ADMIN\02_UTILITY\01_DRIVER\SS\A3_BW_COLOUR_SYSTEM_STDUPLT
 D:\PROJECTS\6067406\01_CAD_ADMIN\02_UTILITY\01_DRIVER\SS\A3_BW_COLOUR_SYSTEM_STDUPLT
 P:\PROJECTS\6067406\01_CAD_ADMIN\02_UTILITY\01_DRIVER\SS\A3_BW_COLOUR_SYSTEM_STDUPLT
 MODEL NAME: C:\PROJECTS\6067406\01_CAD_ADMIN\02_UTILITY\01_DRIVER\SS\A3_BW_COLOUR_SYSTEM_STDUPLT.dwg
 FILE NAME: C:\PROJECTS\6067406\01_CAD_ADMIN\02_UTILITY\01_DRIVER\SS\A3_BW_COLOUR_SYSTEM_STDUPLT.dwg

DRAWN: YFB DESIGNED: --- CHECKED: --- APPROVED: --- DATE: 11/SEP/2023		NORTHERN LINK 	TITLE: C1603 ENVIRONMENTAL IMPACT ASSESSMENT STUDY FOR NORTHERN LINK PREDICTED FIXED PLANT NOISE LEVEL AT REPRESENTATIVE LEVELS (SHEET 10 OF 10) SCALE: 1 : 2000 (A3) DRAWING NO.: C1603/C/NOL/ACM/M52/522 REV: -
DO NOT SCALE DRAWINGS. ALL DIMENSIONS SHALL BE VERIFIED ON SITE. © MTR CORPORATION LIMITED 2008. COPYRIGHT IN RESPECT OF THIS DRAWING / DOCUMENT IS OWNED BY THE MTR CORPORATION LIMITED OF HONG KONG. NO REPRODUCTION OF THE DRAWING / DOCUMENT OR ANY PART BY WHATEVER MEANS IS PERMITTED WITHOUT THE PRIOR WRITTEN CONSENT OF THE MTR CORPORATION LIMITED.		ORIGINATOR: AECOM CADD REF.: C1603_C_NOL_ACM_M52_522.dgn	