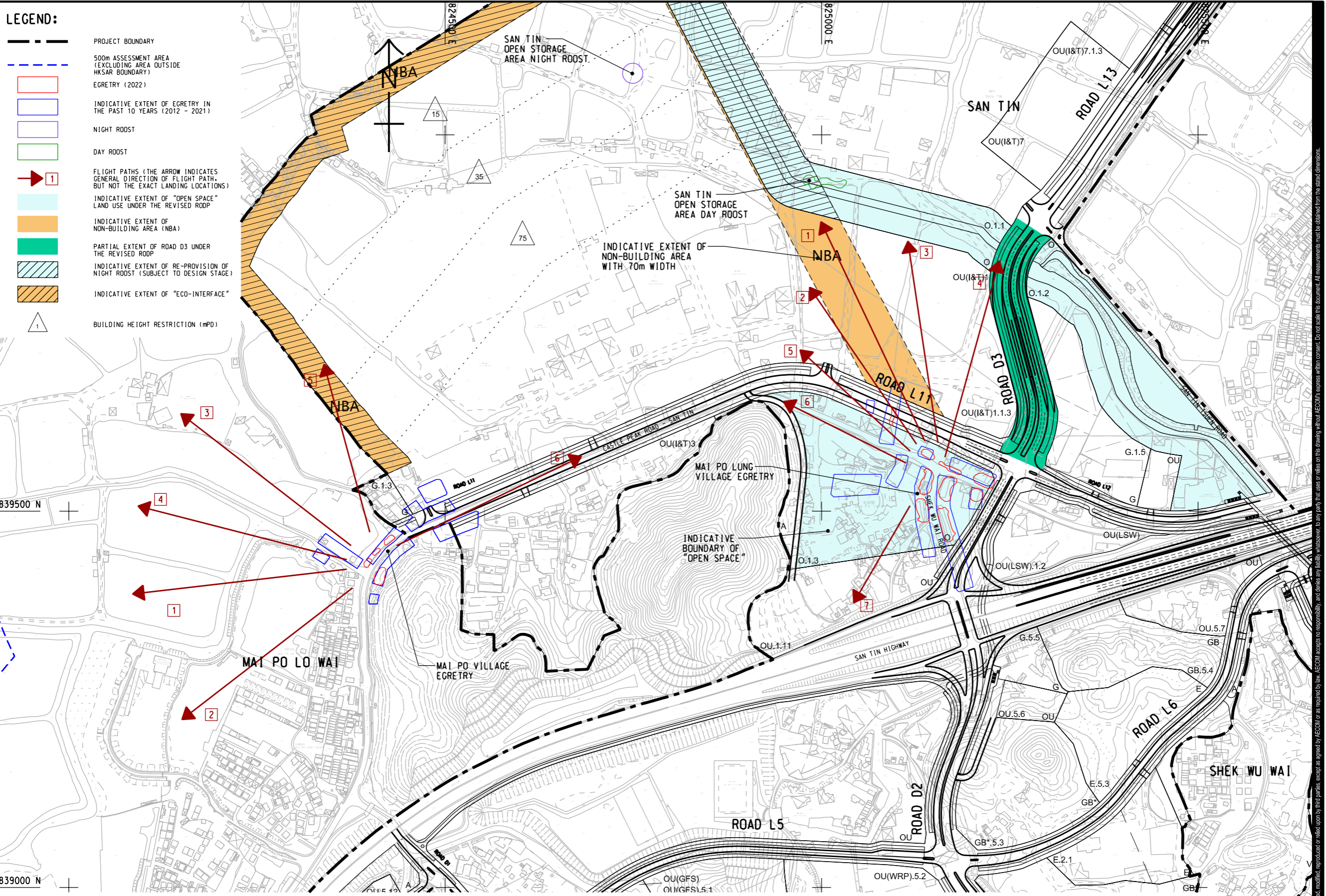


ISO A1 594mm x 841mm
 Approved:
 Checked:
 Designer:
 Project Management Initials:
 11/21/2023
 PATH P:\PROJECTS\60670882\DRAWING\REPORT\A34\A34_711.dgn
 Plot File by: YangJ8

LEGEND:

- PROJECT BOUNDARY
- 500m ASSESSMENT AREA (EXCLUDING AREA OUTSIDE HKSAR BOUNDARY)
- EGRETRY (2022)
- INDICATIVE EXTENT OF EGRETRY IN THE PAST 10 YEARS (2012 - 2021)
- NIGHT ROOST
- DAY ROOST
- ➔ 1 FLIGHT PATHS (THE ARROW INDICATES GENERAL DIRECTION OF FLIGHT PATH, BUT NOT THE EXACT LANDING LOCATIONS)
- INDICATIVE EXTENT OF "OPEN SPACE" LAND USE UNDER THE REVISED ROOP
- INDICATIVE EXTENT OF NON-BUILDING AREA (NBA)
- PARTIAL EXTENT OF ROAD D3 UNDER THE REVISED ROOP
- INDICATIVE EXTENT OF RE-PROVISION OF NIGHT ROOST (SUBJECT TO DESIGN STAGE)
- INDICATIVE EXTENT OF "ECO-INTERFACE"
- 1 BUILDING HEIGHT RESTRICTION (mPD)



MAI PO VILLAGE (MPV) EGRETRY:

FLIGHT PATH	NUMBER OF USAGE	PERCENTAGE
FLIGHT PATH 1	71	26.5%
FLIGHT PATH 2	38	14.2%
FLIGHT PATH 3	51	19.0%
FLIGHT PATH 4	38	14.2%
FLIGHT PATH 5	60	22.4%
FLIGHT PATH 6	10	3.7%
TOTAL	268	100%

FLIGHT HEIGHT (m)	FLIGHT PATH 1		FLIGHT PATH 2		FLIGHT PATH 3		FLIGHT PATH 4		FLIGHT PATH 5		FLIGHT PATH 6	
	NO.	%	NO.	%	NO.	%	NO.	%	NO.	%	NO.	%
0 - 10	32	45.1%	7	18.4%	38	74.5%	31	81.6%	23	38.3%	2	20%
11 - 20	39	54.9%	28	73.7%	11	21.6%	1	2.6%	36	60%	3	30%
21 - 30	-	-	3	7.9%	2	3.9%	6	15.8%	1	1.7%	5	50%
TOTAL	71	100%	38	100%	51	100%	38	100%	60	100%	10	100%

NOTE: 1. THE NUMBER OF OBSERVED FLIGHTS PATH USAGE DOES NOT DIRECTLY REFLECT THE TOTAL ABUNDANCE OF ARDEIDS / NESTS RECORDED FROM THE EGRETRIES.

MAI PO LUNG VILLAGE (MPLV) EGRETRY:

FLIGHT PATH	NUMBER OF USAGE	PERCENTAGE
FLIGHT PATH 1	132	38.9%
FLIGHT PATH 2	76	22.4%
FLIGHT PATH 3	44	12.9%
FLIGHT PATH 4	47	13.8%
FLIGHT PATH 5	26	7.6%
FLIGHT PATH 6	13	3.8%
FLIGHT PATH 7	2	0.6%
TOTAL	315	100%

FLIGHT HEIGHT (m)	FLIGHT PATH 1		FLIGHT PATH 2		FLIGHT PATH 3		FLIGHT PATH 4		FLIGHT PATH 5		FLIGHT PATH 6		FLIGHT PATH 7	
	NO.	%	NO.	%	NO.	%	NO.	%	NO.	%	NO.	%	NO.	%
0 - 10	76	57.5%	40	52.6%	20	45.5%	39	83.0%	9	34.6%	4	30.8%	2	100%
11 - 20	55	41.7%	36	47.4%	24	54.5%	8	17.0%	16	61.5%	3	23.0%	-	-
21 - 30	1	0.8%	-	-	-	-	-	-	1	3.8%	2	15.4%	-	-
> 30	-	-	-	-	-	-	-	-	-	-	4	30.8%	-	-
TOTAL	132	100%	76	100%	44	100%	47	100%	26	100%	13	100%	2	100%

NOTE: 1. THE NUMBER OF OBSERVED FLIGHTS PATH USAGE DOES NOT DIRECTLY REFLECT THE TOTAL ABUNDANCE OF ARDEIDS / NESTS RECORDED FROM THE EGRETRIES.



PROJECT
 項目
 FIRST PHASE DEVELOPMENT OF THE NEW TERRITORIES NORTH – SAN TIN / LOK MA CHAU DEVELOPMENT NODE – INVESTIGATION

CLIENT
 業主
 土木工程拓展署
 Civil Engineering and Development Department
 規劃署
 Planning Department

CONSULTANT
 顧問公司
 AECOM Asia Company Ltd.
 www.aecom.com

SUB-CONSULTANTS
 分判工程師/顧問公司

ISSUE/REVISION
 修訂

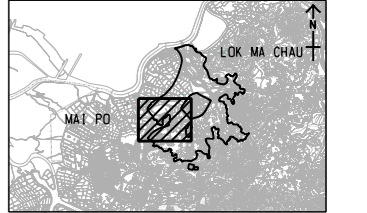
NO.	DATE	DESCRIPTION	CHK.

STATUS
 階段

SCALE
 比例
 A3 1:5000

DIMENSION UNIT
 尺寸單位
 METRES

KEY PLAN
 索引圖
 A3 1:250000



PROJECT NO.
 項目編號
 60670882

AGREEMENT NO.
 協議編號
 CE 20/2021

SHEET TITLE
 圖紙名稱
 MPLV AND MPLV EGRETRY, AND SAN TIN OPEN STORAGE AREA ROOSTS

SHEET NUMBER
 圖紙編號
 60670882/A34/FIGURE 10.6A

This drawing has been prepared for the use of AECOM's client. It may not be used, modified, reproduced or relied upon by third parties, except as agreed by AECOM or as required by law. AECOM accepts no responsibility, and disclaims any liability whatsoever, for any part, that uses or relies on this drawing without AECOM's express written consent. All measurements must be obtained from the stated dimensions.

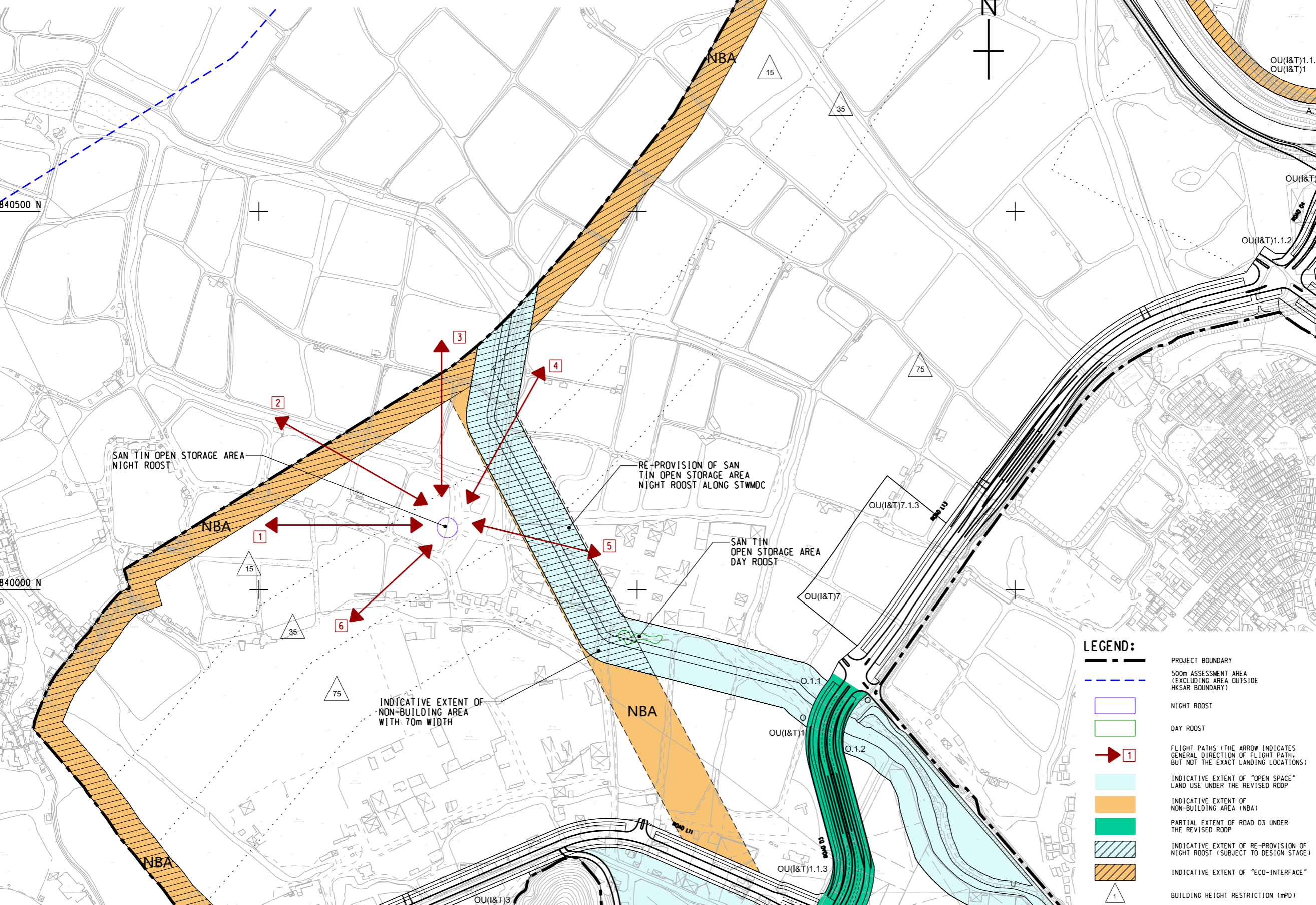
ISO A1 594mm x 841mm
 Approved:
 Checked:
 Designer:
 Project Management Initials:
 Plot File by: YangJ8
 PATH PROJECTS\60670882\DRAWING\REPORT\A34\A34_712.dgn

SAN TIN OPEN STORAGE AREA NIGHT ROOST:

FLIGHT PATH	NUMBER OF USAGE	PERCENTAGE
FLIGHT PATH 1	34	15.3%
FLIGHT PATH 2	58	26.2%
FLIGHT PATH 3	28	12.6%
FLIGHT PATH 4	48	21.6%
FLIGHT PATH 5	50	22.5%
FLIGHT PATH 6	4	1.8%
TOTAL	222	100%

FLIGHT HEIGHT (m)	FLIGHT PATH 1		FLIGHT PATH 2		FLIGHT PATH 3		FLIGHT PATH 4		FLIGHT PATH 5		FLIGHT PATH 6	
	NO.	%	NO.	%	NO.	%	NO.	%	NO.	%	NO.	%
0 - 10	33	97.1%	57	98.3%	23	82.1%	30	62.5%	45	90%	4	100%
11 - 20	1	2.9%	1	17%	5	17.9%	18	37.5%	5	10%	0	0%
TOTAL	34	100%	58	100%	28	100%	48	100%	50	100%	4	100%

NOTE:
 1. THE NUMBER OF OBSERVED FLIGHTS PATH USAGE DOES NOT DIRECTLY REFLECT THE TOTAL ABUNDANCE OF BIRDS RECORDED FROM THE NIGHT ROOST.



LEGEND:

- PROJECT BOUNDARY
- 500m ASSESSMENT AREA (EXCLUDING AREA OUTSIDE HKSAR BOUNDARY)
- NIGHT ROOST
- DAY ROOST
- ➔ 1 FLIGHT PATHS (THE ARROW INDICATES GENERAL DIRECTION OF FLIGHT PATH, BUT NOT THE EXACT LANDING LOCATIONS)
- INDICATIVE EXTENT OF "OPEN SPACE" LAND USE UNDER THE REVISED ROOP
- INDICATIVE EXTENT OF NON-BUILDING AREA (NBA)
- PARTIAL EXTENT OF ROAD D3 UNDER THE REVISED ROOP
- INDICATIVE EXTENT OF RE-PROVISION OF NIGHT ROOST (SUBJECT TO DESIGN STAGE)
- INDICATIVE EXTENT OF "ECO-INTERFACE"
- 1 BUILDING HEIGHT RESTRICTION (mPD)

AECOM

PROJECT
 項目
FIRST PHASE DEVELOPMENT OF THE NEW TERRITORIES NORTH – SAN TIN / LOK MA CHAU DEVELOPMENT NODE – INVESTIGATION

CLIENT
 業主
CEDD 土木工程拓展署
 Civil Engineering and Development Department
規劃署 Planning Department

CONSULTANT
 工程顧問公司
 AECOM Asia Company Ltd.
 www.aecom.com

SUB-CONSULTANTS
 分判工程師/顧問公司

ISSUE/REVISION

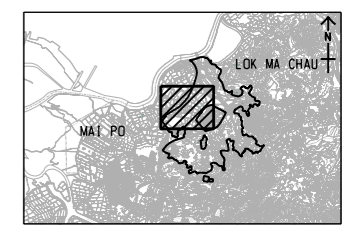
NO.	DESCRIPTION

IR	DATE	DESCRIPTION	CHK.
編號	日期	內容/描述	核對

SCALE 比例
 A3 1 : 5000

DIMENSION UNIT 尺寸單位
 METRES

KEY PLAN 索引圖
 A3 1 : 250000



PROJECT NO. 項目編號
 60670882

AGREEMENT NO. 協議編號
 CE 20/2021

SHEET TITLE 圖紙名稱
 SAN TIN OPEN STORAGE AREA NIGHT ROOST AND DAY ROOST

SHEET NUMBER 圖紙編號
 60670882/A34/FIGURE 10.6B

This drawing has been prepared for the use of AECOM's client. It may not be used, modified, reproduced or relied upon by third parties, except as agreed by AECOM or as required by law. AECOM accepts no responsibility, and denies any liability, whatsoever, to any party, for loss or damage of any kind, arising from the use of this drawing without AECOM's express written consent. All measurements must be obtained from the stated dimensions.

LEGEND:

- PROJECT BOUNDARY
- 500m ASSESSMENT AREA (EXCLUDING AREA OUTSIDE HKSAR BOUNDARY)
- 300m FLIGHT CORRIDOR
- "ECOLOGICAL AREA" UNDER LMCL DEVELOPMENT
- NIGHT ROOST
- DAY ROOST
- FLIGHT PATHS FROM NIGHT ROOST (THE ARROW INDICATES GENERAL DIRECTION OF FLIGHT PATH, BUT NOT THE EXACT LANDING LOCATIONS)
- OTHER FLIGHT PATHS OUTSIDE NIGHT ROOST (THE ARROW INDICATES GENERAL DIRECTION OF FLIGHT PATH, BUT NOT THE EXACT LANDING LOCATIONS)
- INDICATIVE EXTENT OF "ECO-INTERFACE"
- INDICATIVE EXTENT OF NON-BUILDING AREA (NBA)
- INDICATIVE EXTENT OF AFCD FISHERIES RESEARCH CENTRE
- BUILDING HEIGHT RESTRICTION (mPD)

SHENZHEN SHI

842000 N

841500 N

HA WAN TSUEN NIGHT ROOST:

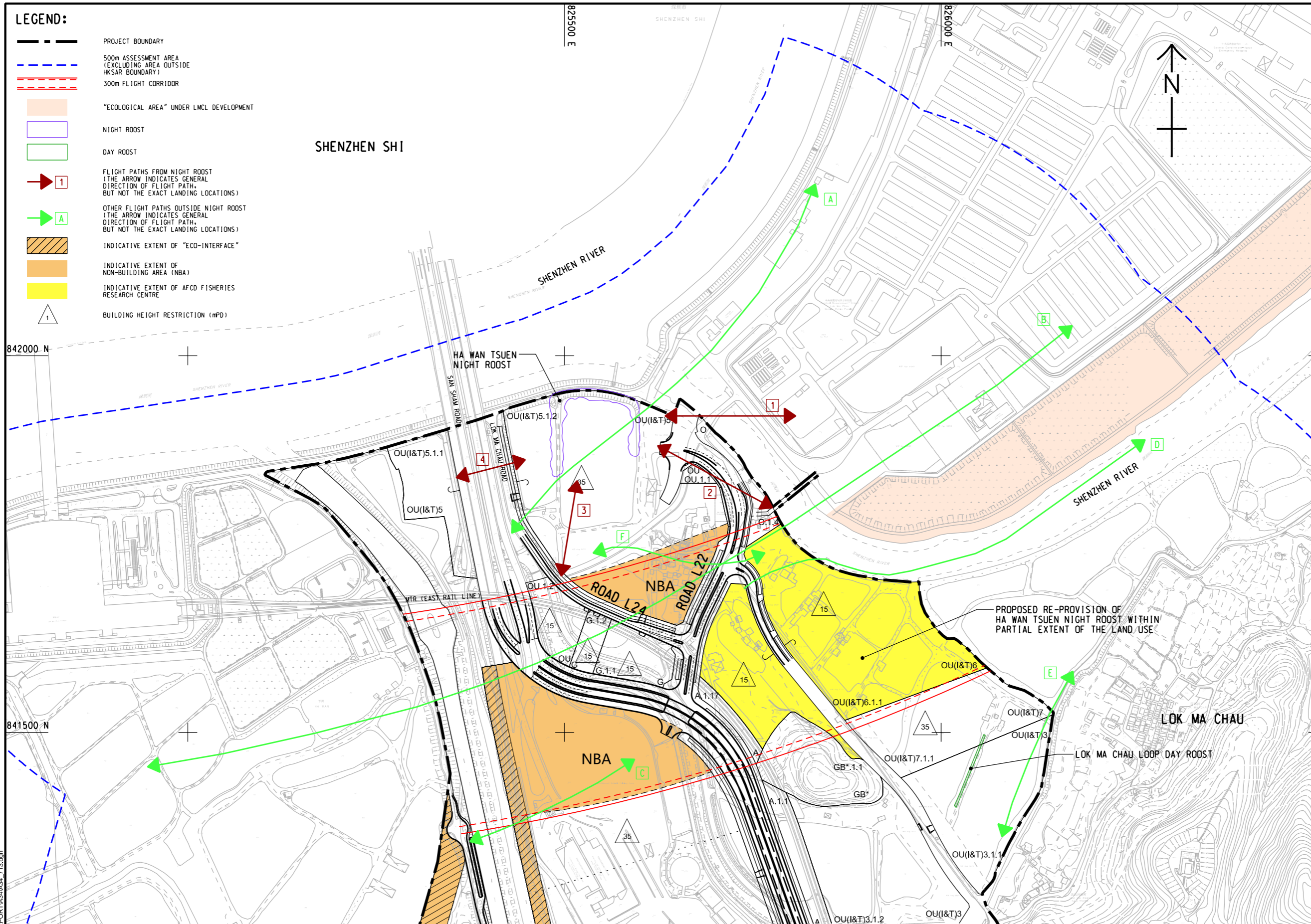
FLIGHT PATH	NUMBER OF USAGE	PERCENTAGE
FLIGHT PATH 1	246	92.1%
FLIGHT PATH 2	13	4.9%
FLIGHT PATH 3	7	2.6%
FLIGHT PATH 4	1	0.4%
TOTAL	267	100%

NOTE:
1. THE NUMBER OF OBSERVED FLIGHTS PATH USAGE DOES NOT DIRECTLY REFLECT THE TOTAL ABUNDANCE OF BIRDS RECORDED FROM THE NIGHT ROOST.

OTHER FLIGHT PATHS (DRY SEASON):

FLIGHT PATH	NUMBER OF USAGE	PERCENTAGE
FLIGHT PATH A	212	10.6%
FLIGHT PATH B	428	21.4%
FLIGHT PATH C	270	13.5%
FLIGHT PATH D	766	38.3%
FLIGHT PATH E	268	13.4%
FLIGHT PATH F	55	2.8%
TOTAL:	1999	100%

FLIGHT HEIGHT (m)	FLIGHT PATH A		FLIGHT PATH B		FLIGHT PATH C		FLIGHT PATH D		FLIGHT PATH E		FLIGHT PATH F	
	NO.	%	NO.	%	NO.	%	NO.	%	NO.	%	NO.	%
0 - 10	11	5.2%	37	8.6%	90	33.3%	373	48.7%	39	14.5%	15	27.3%
11 - 20	155	73.1%	64	15.0%	180	66.7%	253	33.0%	154	57.5%	15	27.3%
21 - 30	44	20.8%	232	54.2%	-	-	127	16.6%	67	25.0%	24	43.6%
> 30	2	0.9%	95	22.2%	-	-	13	1.7%	8	3.0%	1	1.8%
TOTAL	212	100%	428	100%	270	100%	766	100%	268	100%	55	100%



PROPOSED RE-PROVISION OF HA WAN TSUEN NIGHT ROOST WITHIN PARTIAL EXTENT OF THE LAND USE

LOK MA CHAU LOOP DAY ROOST



PROJECT
項目
FIRST PHASE DEVELOPMENT OF THE NEW TERRITORIES NORTH – SAN TIN / LOK MA CHAU DEVELOPMENT NODE – INVESTIGATION

CLIENT
業主
 土木工程拓展署
Civil Engineering and Development Department
 規劃署
Planning Department

CONSULTANT
顧問公司
AECOM Asia Company Ltd.
www.aecom.com

SUB-CONSULTANTS
分包工程師/顧問公司

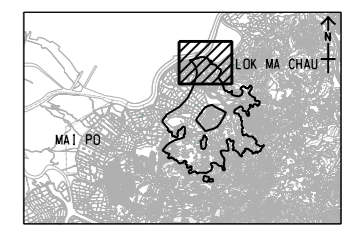
ISSUE/REVISION
修訂

IR	DATE	DESCRIPTION	CHK.

STATUS
階段

SCALE
比例
A3 1 : 5000
DIMENSION UNIT
尺寸單位
METRES

KEY PLAN
索引圖
A3 1 : 250000



PROJECT NO.
項目編號
60670882
AGREEMENT NO.
協議編號
CE 20/2021

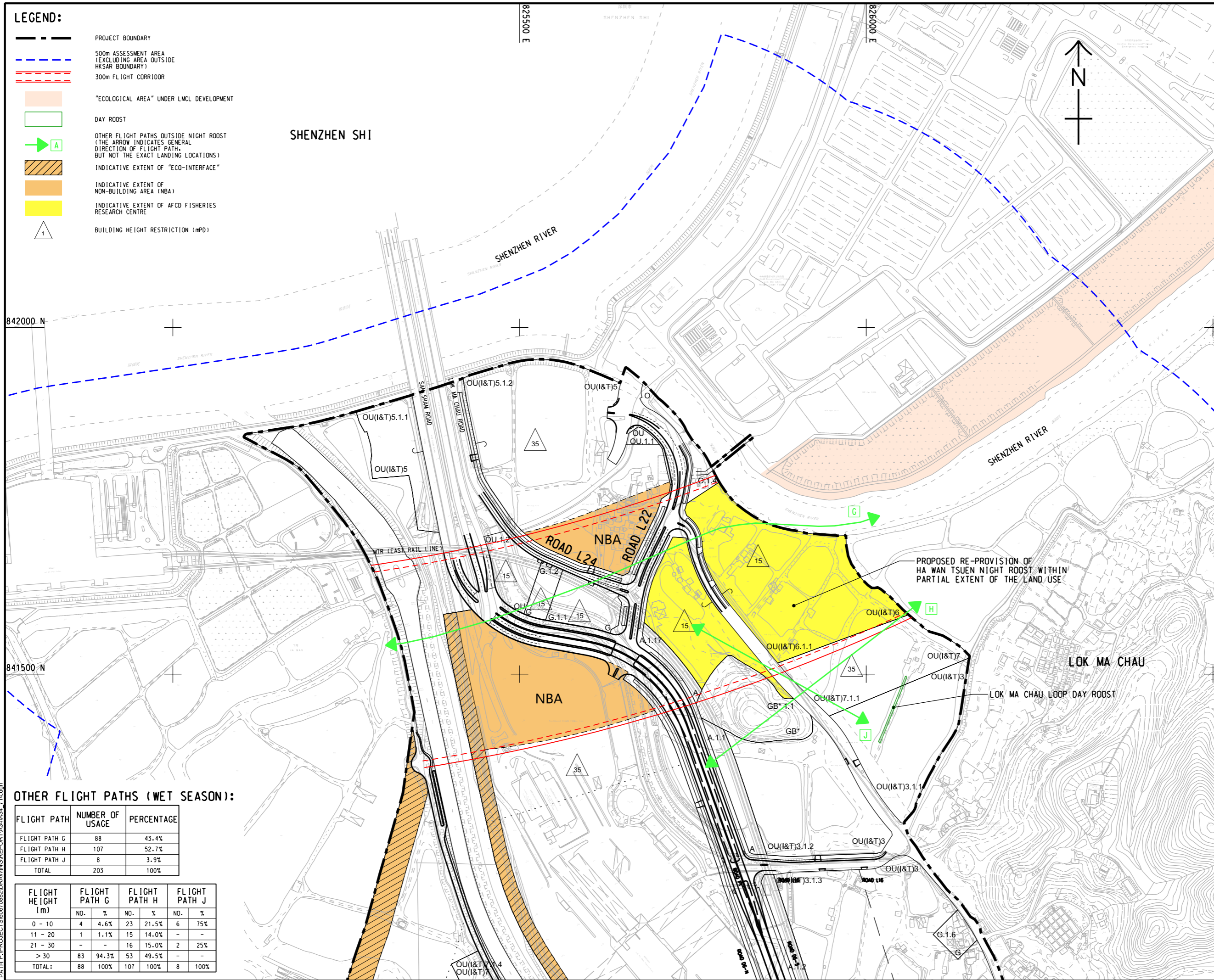
SHEET TITLE
圖紙名稱
HA WAN TSUEN NIGHT ROOST, AND FLIGHT PATHS ACROSS LMC BCP (DRY SEASON)

SHEET NUMBER
圖紙編號
60670882/A34/FIGURE 10.6C

This drawing has been prepared for the use of AECOM's client. It may not be used, modified, reproduced or relied upon by third parties, except as agreed by AECOM or as required by law. AECOM accepts no responsibility, and disclaims any liability whatsoever, for any part, that uses or relies on this drawing without AECOM's express written consent. All measurements must be obtained from the stated dimensions.

- LEGEND:**
- PROJECT BOUNDARY
 - 500m ASSESSMENT AREA (EXCLUDING AREA OUTSIDE HKSAR BOUNDARY)
 - 300m FLIGHT CORRIDOR
 - "ECOLOGICAL AREA" UNDER LMCL DEVELOPMENT
 - DAY ROOST
 - OTHER FLIGHT PATHS OUTSIDE NIGHT ROOST (THE ARROW INDICATES GENERAL DIRECTION OF FLIGHT PATH, BUT NOT THE EXACT LANDING LOCATIONS)
 - INDICATIVE EXTENT OF "ECO-INTERFACE"
 - INDICATIVE EXTENT OF NON-BUILDING AREA (NBA)
 - INDICATIVE EXTENT OF AFCD FISHERIES RESEARCH CENTRE
 - BUILDING HEIGHT RESTRICTION (mPD)

SHENZHEN SHI



OTHER FLIGHT PATHS (WET SEASON):

FLIGHT PATH	NUMBER OF USAGE	PERCENTAGE
FLIGHT PATH G	88	43.4%
FLIGHT PATH H	107	52.7%
FLIGHT PATH J	8	3.9%
TOTAL	203	100%

FLIGHT HEIGHT (m)	FLIGHT PATH G		FLIGHT PATH H		FLIGHT PATH J	
	NO.	%	NO.	%	NO.	%
0 - 10	4	4.6%	23	21.5%	6	75%
11 - 20	1	1.1%	15	14.0%	-	-
21 - 30	-	-	16	15.0%	2	25%
> 30	83	94.3%	53	49.5%	-	-
TOTAL:	88	100%	107	100%	8	100%



PROJECT
 項目
 FIRST PHASE DEVELOPMENT OF THE NEW TERRITORIES NORTH – SAN TIN / LOK MA CHAU DEVELOPMENT NODE – INVESTIGATION

CLIENT
 業主
 土木工程拓展署
 Civil Engineering and Development Department
 規劃署
 Planning Department

CONSULTANT
 工程顧問公司
 AECOM Asia Company Ltd.
 www.aecom.com

SUB-CONSULTANTS
 分判工程師/顧問公司

ISSUE/REVISION
 修訂

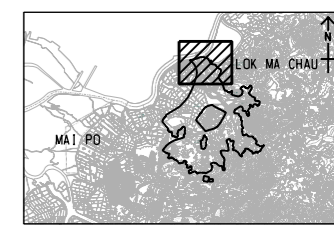
IR	DATE	DESCRIPTION	CHK.

STATUS
 階段

SCALE
 比例
 A3 1:5000

DIMENSION UNIT
 尺寸單位
 METRES

KEY PLAN
 索引圖
 A3 1:250000



PROJECT NO.
 項目編號
 60670882

AGREEMENT NO.
 協議編號
 CE 20/2021

SHEET TITLE
 圖紙名稱
 FLIGHT PATHS ACROSS LMC BCP (WET SEASON)

SHEET NUMBER
 圖紙編號
 60670882/A34/FIGURE 10.6D

This drawing has been prepared for the use of AECOM's client. It may not be used, modified, reproduced or relied upon by third parties, except as agreed by AECOM or as required by law. AECOM accepts no responsibility, and disclaims any liability, whatsoever, for any part, that uses or relies on this drawing without AECOM's express written consent. All measurements must be obtained from the stated dimensions.