


ISO A1 594mm x 841mm  
 Approved:  
 Checked:  
 Designer:  
 Project Management Initials:  
 28/12/2023  
 PATH PROJECTS/60670882/DRAWING/REPORT/A34/A34\_741.dgn

**NOTE:**

1. THIS DRAWING TO BE READ IN CONJUNCTION WITH DRAWING NOS. 60670882/A34/FIGURE 11.1 TO 11.9.

**LEGEND:**

-  PROJECT BOUNDARY
-  500m ASSESSMENT AREA (EXCLUDING AREA OUTSIDE HKSAR BOUNDARY)
-  ACTIVE FISHPOND
-  ACTIVE FISHPOND (INDOOR)
-  INACTIVE FISHPOND
-  ABANDONED FISHPOND (OPEN WATER)
-  ABANDONED FISHPOND (OVERGROWN)
-  OTHER PONDS (NON-FISHERIES RELATED)
-  MAJOR WATERCOURSES



81500 N

841000 N

824000 E

824500 E

825000 E

+

+

+

+

+

+

SAM PO SHUE

三寶樹

CUT LINE A-A

SEE DRAWING NO. 60670882/A34/FIGURE 11.1B

CUT LINE B-B  
 SEE DRAWING NO. 60670882/A34/FIGURE 11.1D

This drawing has been prepared for the use of AECOM's client. It may not be used, modified, reproduced or relied upon by third parties, except as agreed by AECOM or as required by law. AECOM accepts no responsibility, and denies any liability, whatsoever, to any party, that uses or relies on this drawing without AECOM's express written consent. All measurements must be obtained from the stated dimensions.



**PROJECT**

FIRST PHASE DEVELOPMENT OF THE NEW TERRITORIES NORTH – SAN TIN / LOK MA CHAU DEVELOPMENT NODE – INVESTIGATION

**CLIENT**



**CONSULTANT**

AECOM Asia Company Ltd.  
www.aecom.com

**SUB-CONSULTANTS**

**ISSUE/REVISION**

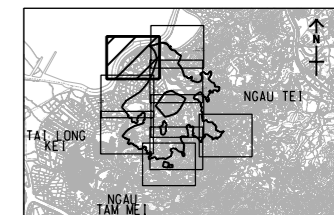
NO.	DATE	DESCRIPTION	CHK.

**STATUS**

**SCALE**      **DIMENSION UNIT**

A3 1 : 5000      METRES

**KEY PLAN**      A3 1 : 250000



**PROJECT NO.**      **AGREEMENT NO.**

60670882      CE 20/2021

**SHEET TITLE**

FISHPONDS WITHIN THE ASSESSMENT AREA

**SHEET NUMBER**

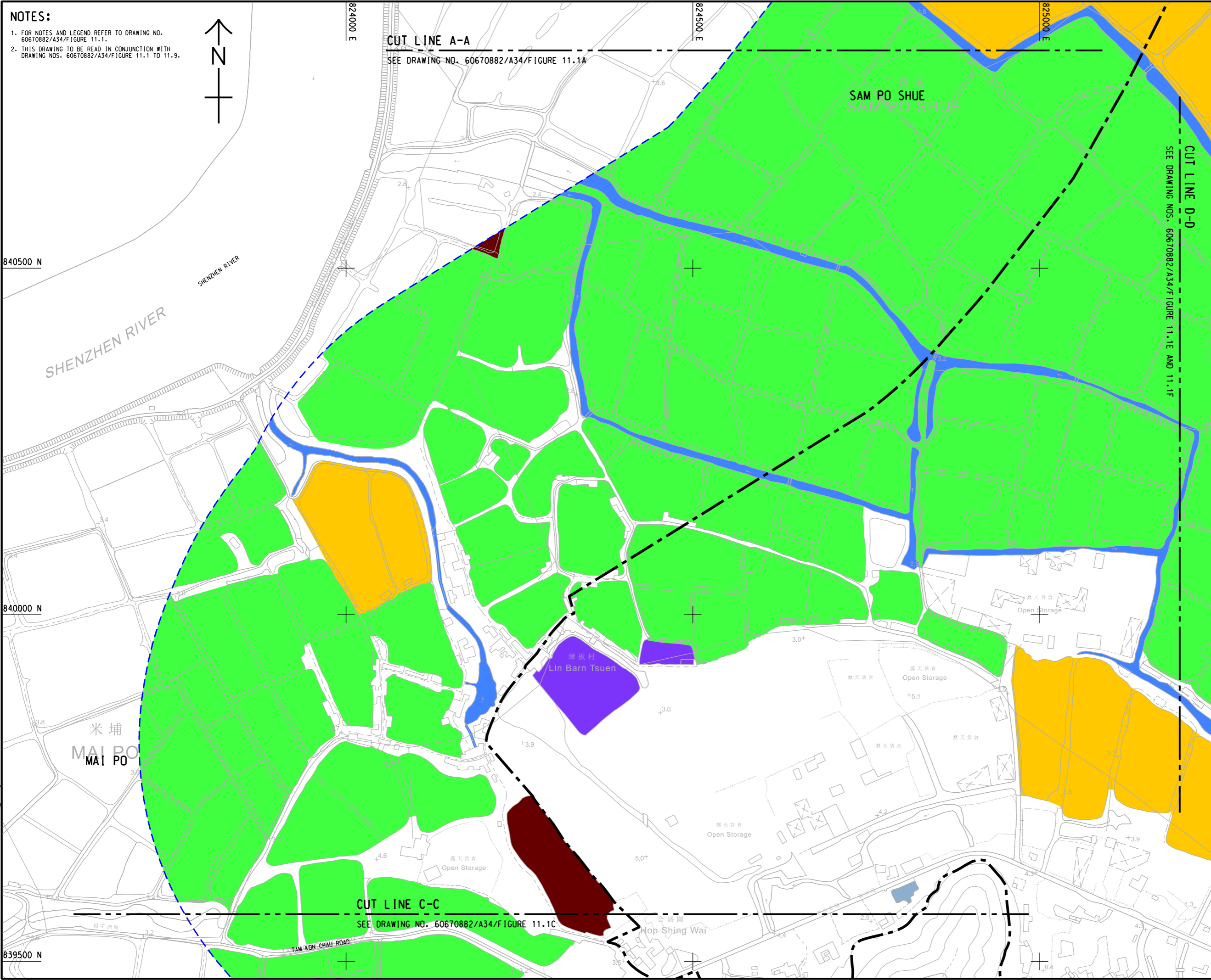
60670882/A34/FIGURE 11.1A

SHEET 1 OF 9

ISO A1 594mm x 841mm  
Approved:  
Checked:  
Designer:  
Project Management Initials:  
Plot File by: haiguang.zhao 11/02/2023  
PATH: P:\PROJECTS\60670882\DRAWING\REPORT\A34\A34\_742.dgn

**NOTES:**

- FOR NOTES AND LEGEND REFER TO DRAWING NO. 60670882/A34/Figure 11.1.
- THIS DRAWING TO BE READ IN CONJUNCTION WITH DRAWING NOS. 60670882/A34/Figure 11.1 TO 11.9.



**PROJECT**  
 FIRST PHASE DEVELOPMENT OF THE NEW TERRITORIES NORTH – SAN TIN / LOK MA CHAU DEVELOPMENT NODE – INVESTIGATION

**CLIENT**  
 土木工程拓展署  
 Civil Engineering and Development Department  
 規劃署  
 Planning Department

**CONSULTANT**  
 AECOM Asia Company Ltd.  
 www.aecom.com

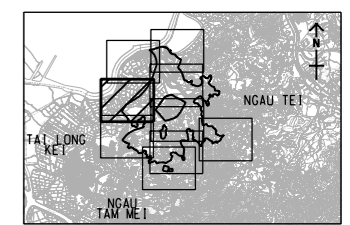
**SUB-CONSULTANTS**

**ISSUE/REVISION**

NO.	DATE	DESCRIPTION	CHK.

**STATUS**  
 階段

**SCALE**  
 比例  
 A3 1 : 5000  
**DIMENSION UNIT**  
 尺寸單位  
 METRES



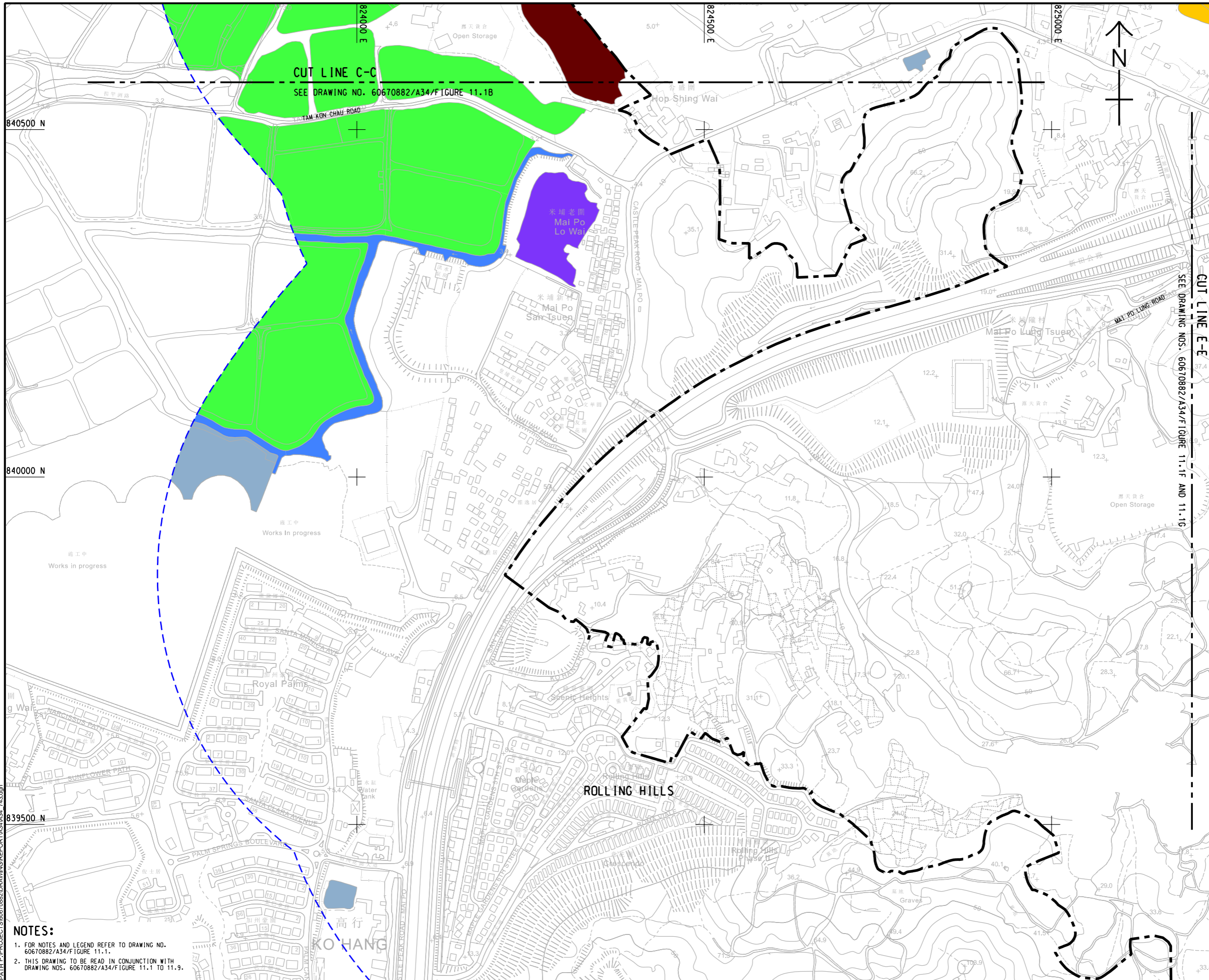
**PROJECT NO.**  
 項目編號  
 60670882  
**AGREEMENT NO.**  
 協議編號  
 CE 20/2021

**SHEET TITLE**  
 圖紙名稱  
 FISHPONDS WITHIN THE ASSESSMENT AREA

**SHEET NUMBER**  
 圖紙編號  
 60670882/A34/FIGURE 11.1B

This drawing has been prepared for the use of AECOM's client. It may not be used, modified, reproduced or relied upon by third parties, except as agreed by AECOM or as required by law. AECOM accepts no responsibility, and denies any liability whatsoever, to any party that uses or relies on this drawing without AECOM's express written consent. All measurements must be obtained from the stated dimensions.

ISO A1 594mm x 841mm  
Approved:  
Checked:  
Designer:  
Project Management Initials:



**ISSUE/REVISION**  
 修訂

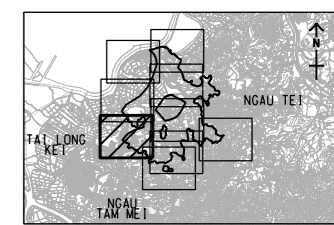
IR	DATE	DESCRIPTION	CHK.
修訂	日期	內容簡述	核核

**STATUS**  
 階段

**SCALE**  
 比例  
 A3 1 : 5000

**DIMENSION UNIT**  
 尺寸單位  
 METRES

**KEY PLAN** A3 1 : 250000  
 索引圖



**PROJECT NO.**  
 項目編號  
 60670882

**AGREEMENT NO.**  
 協議編號  
 CE 20/2021

**SHEET TITLE**  
 圖紙名稱  
 FISHPONDS WITHIN THE ASSESSMENT AREA

**SHEET NUMBER**  
 圖紙編號  
 60670882/A34/FIGURE 11.1C

**NOTES:**

- FOR NOTES AND LEGEND REFER TO DRAWING NO. 60670882/A34/FIGURE 11.1.
- THIS DRAWING TO BE READ IN CONJUNCTION WITH DRAWING NOS. 60670882/A34/FIGURE 11.1 TO 11.9.

This drawing has been prepared for the use of AECOM's client. It may not be used, modified, reproduced or relied upon by third parties, except as agreed by AECOM or as required by law. AECOM accepts no responsibility, and disclaims any liability whatsoever, for any part that is used or relied on in this drawing without AECOM's express written consent. All measurements must be obtained from the stated dimensions.

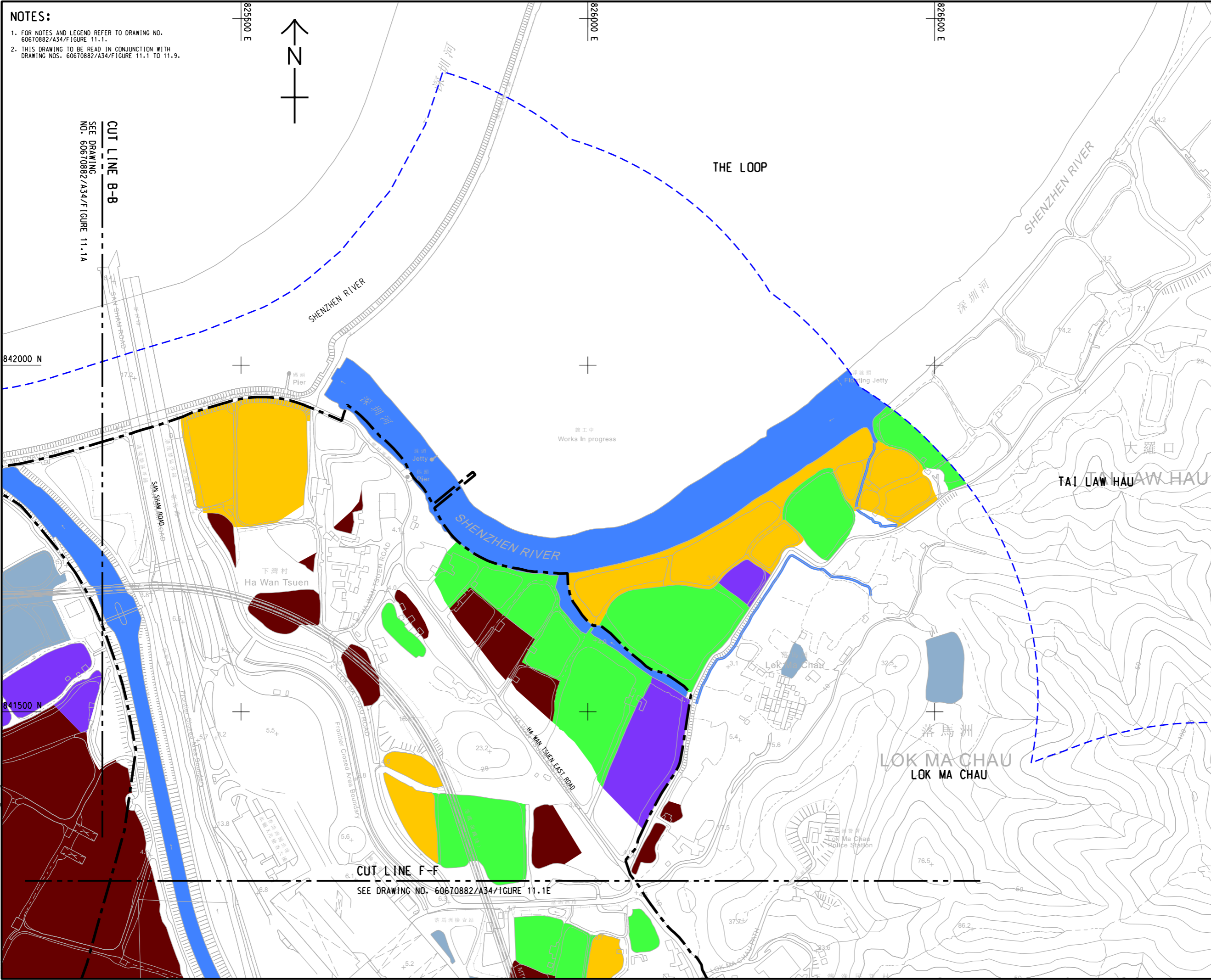
ISO A1 594mm x 841mm  
Approved:  
Checked:  
Designer:  
Project Management Initials:  
Plot File by: YueFB  
PATH: P:\PROJECTS\60670882\DRAWING\REPORT\A34\A34\_744.dgn  
10/11/2023

**NOTES:**

- FOR NOTES AND LEGEND REFER TO DRAWING NO. 60670882/A34/FIGURE 11.1.
- THIS DRAWING TO BE READ IN CONJUNCTION WITH DRAWING NOS. 60670882/A34/FIGURE 11.1 TO 11.9.

SEE DRAWING NO. 60670882/A34/FIGURE 11.1A  
**CUT LINE B-B**

**CUT LINE F-F**  
SEE DRAWING NO. 60670882/A34/FIGURE 11.1E



**PROJECT**  
項目  
FIRST PHASE DEVELOPMENT OF THE NEW TERRITORIES NORTH – SAN TIN / LOK MA CHAU DEVELOPMENT NODE – INVESTIGATION

**CLIENT**  
業主  
 土木工程拓展署  
Civil Engineering and Development Department  
 規劃署  
Planning Department

**CONSULTANT**  
顧問公司  
AECOM Asia Company Ltd.  
www.aecom.com

**SUB-CONSULTANTS**  
分判工程師/顧問公司

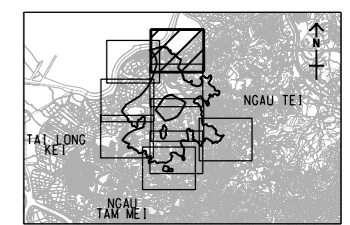
**ISSUE/REVISION**  
修訂

IR	DATE	DESCRIPTION	CHK.

**STATUS**  
階段

**SCALE**  
比例  
A3 1 : 5000  
DIMENSION UNIT  
尺寸單位  
METRES

**KEY PLAN** A3 1 : 250000  
索引圖



**PROJECT NO.**  
項目編號  
60670882  
**AGREEMENT NO.**  
協議編號  
CE 20/2021

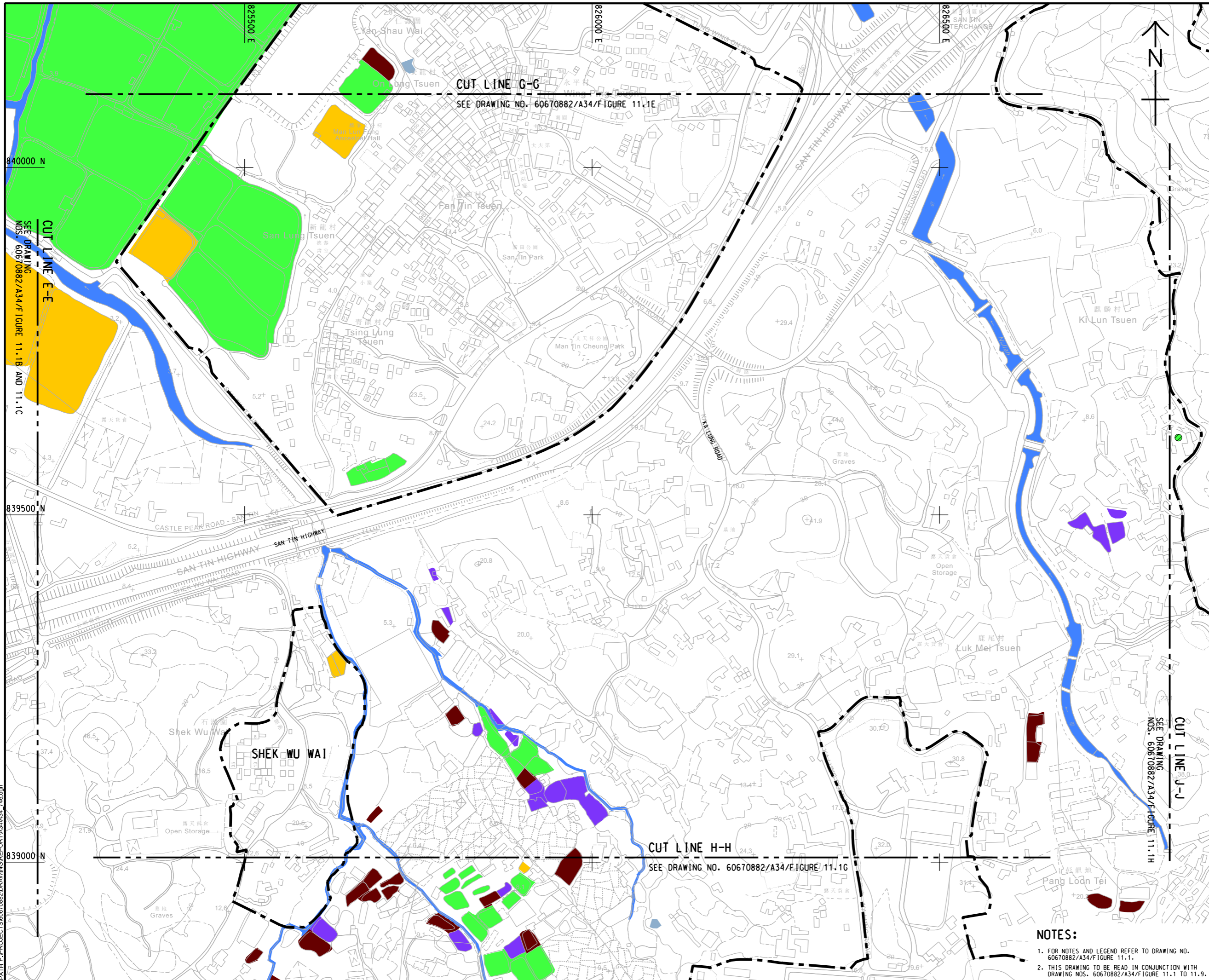
**SHEET TITLE**  
圖紙名稱  
FISHPONDS WITHIN THE ASSESSMENT AREA

**SHEET NUMBER**  
圖紙編號  
60670882/A34/FIGURE 11.1D

This drawing has been prepared for the use of AECOM's client. It may not be used, modified, reproduced or relied upon by third parties, except as agreed by AECOM or as required by law. AECOM accepts no responsibility, and disclaims any liability, whatsoever, for any part, that less or relies on this drawing without AECOM's express written consent. All measurements must be obtained from the stated dimensions.



ISO A1 594mm x 841mm  
 Approved:  
 Checked:  
 Designer:  
 Project Management Initials:  
 Plot File by: YueFB  
 PATH: P:\PROJECTS\60670882\DRAWING\REPORT\A3\A34\_746.dgn  
 28/12/2023

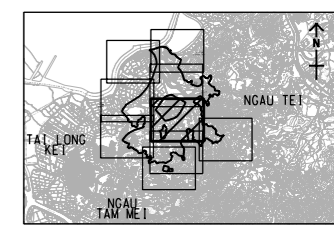


**ISSUE/REVISION**  
 修訂

IR	DATE	DESCRIPTION	CHK.
修訂	日期	內容摘要	核對

**STATUS**  
 階段

SCALE	DIMENSION UNIT
比例	尺寸單位
A3 1 : 5000	METRES
KEY PLAN 1 : 250000	米/呎



PROJECT NO.	AGREEMENT NO.
項目編號	協議編號
60670882	CE 20/2021

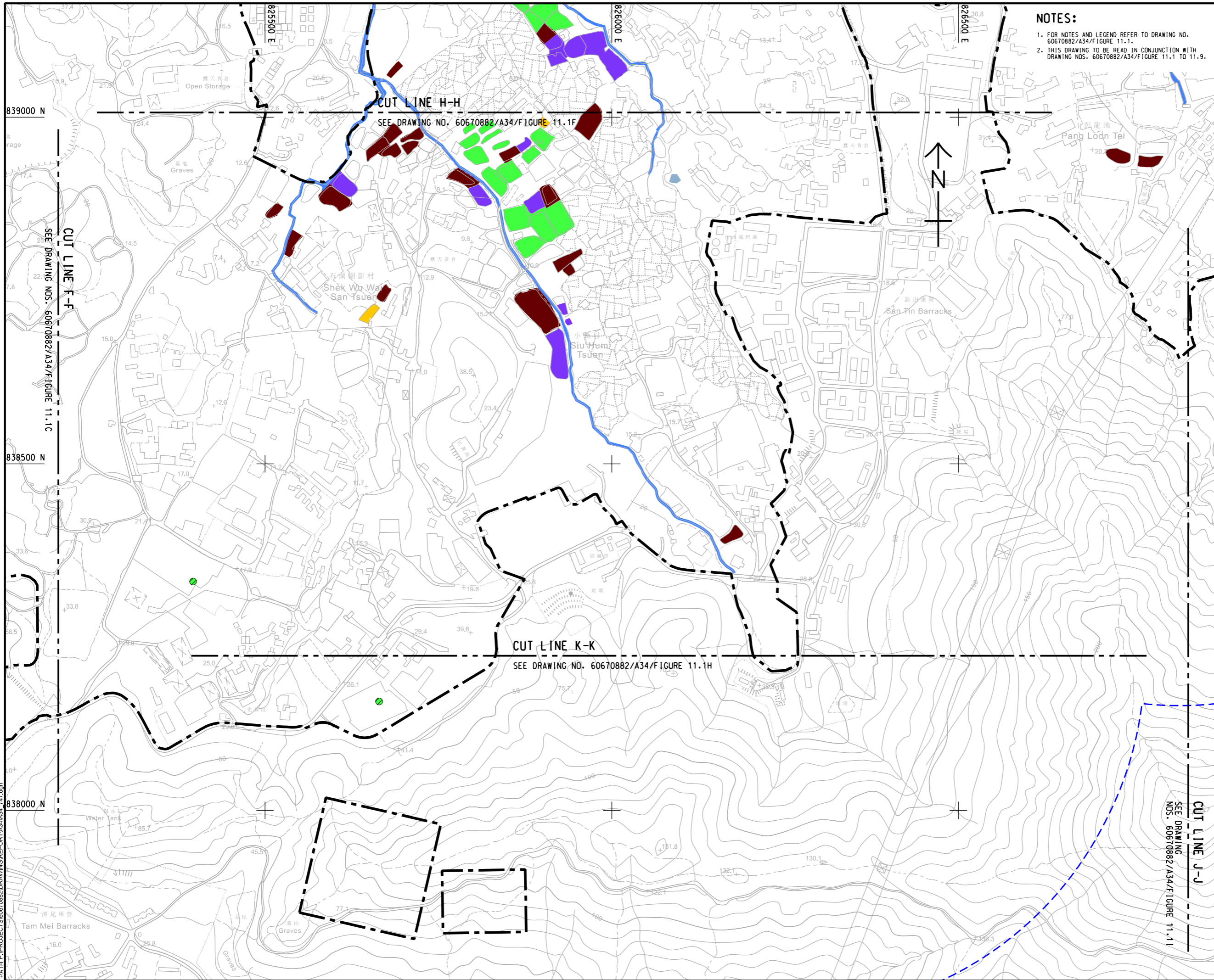
**SHEET TITLE**  
 圖紙名稱  
**FISHPONDS WITHIN THE ASSESSMENT AREA**

**SHEET NUMBER**  
 圖紙編號  
 60670882/A34/FIGURE 11.1F

- NOTES:**
- FOR NOTES AND LEGEND REFER TO DRAWING NO. 60670882/A34/FIGURE 11.1.
  - THIS DRAWING TO BE READ IN CONJUNCTION WITH DRAWING NOS. 60670882/A34/FIGURE 11.1 TO 11.9.

This drawing has been prepared for the use of AECOM's client. It may not be used, modified, reproduced or relied upon by third parties, except as agreed by AECOM or as required by law. AECOM accepts no responsibility, and disclaims any liability whatsoever, for any part, that less or relies on this drawing without AECOM's express written consent. All measurements must be obtained from the stated dimensions.

ISO A1 594mm x 841mm  
Approved:  
Checked:  
Designer:  
Project Management Initials:  
Plot File by: haiquan.zhao 11/04/2023  
PATH: P:\PROJECTS\60670882\DRAWING\REPORT\A34\A34\_T42.dgn



**NOTES:**  
 1. FOR NOTES AND LEGEND REFER TO DRAWING NO. 60670882/A34/FIGURE 11.1.  
 2. THIS DRAWING TO BE READ IN CONJUNCTION WITH DRAWING NOS. 60670882/A34/FIGURE 11.1 TO 11.9.



**PROJECT**  
 項目  
**FIRST PHASE DEVELOPMENT OF THE NEW TERRITORIES NORTH – SAN TIN / LOK MA CHAU DEVELOPMENT NODE – INVESTIGATION**

**CLIENT**  
 業主  
 **土木工程拓展署**  
 Civil Engineering and Development Department  
 **規劃署**  
 Planning Department

**CONSULTANT**  
 工程顧問公司  
 AECOM Asia Company Ltd.  
 www.aecom.com

**SUB-CONSULTANTS**  
 分判工程顧問公司

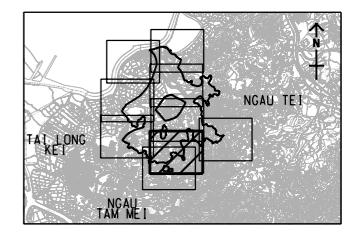
**ISSUE/REVISION**  
 修訂

IR	DATE	DESCRIPTION	CHK.

**STATUS**  
 階段

**SCALE**  
 比例  
 A3 1 : 5000

**DIMENSION UNIT**  
 尺寸單位  
 METRES



**PROJECT NO.**  
 項目編號  
 60670882

**AGREEMENT NO.**  
 協議編號  
 CE 20/2021

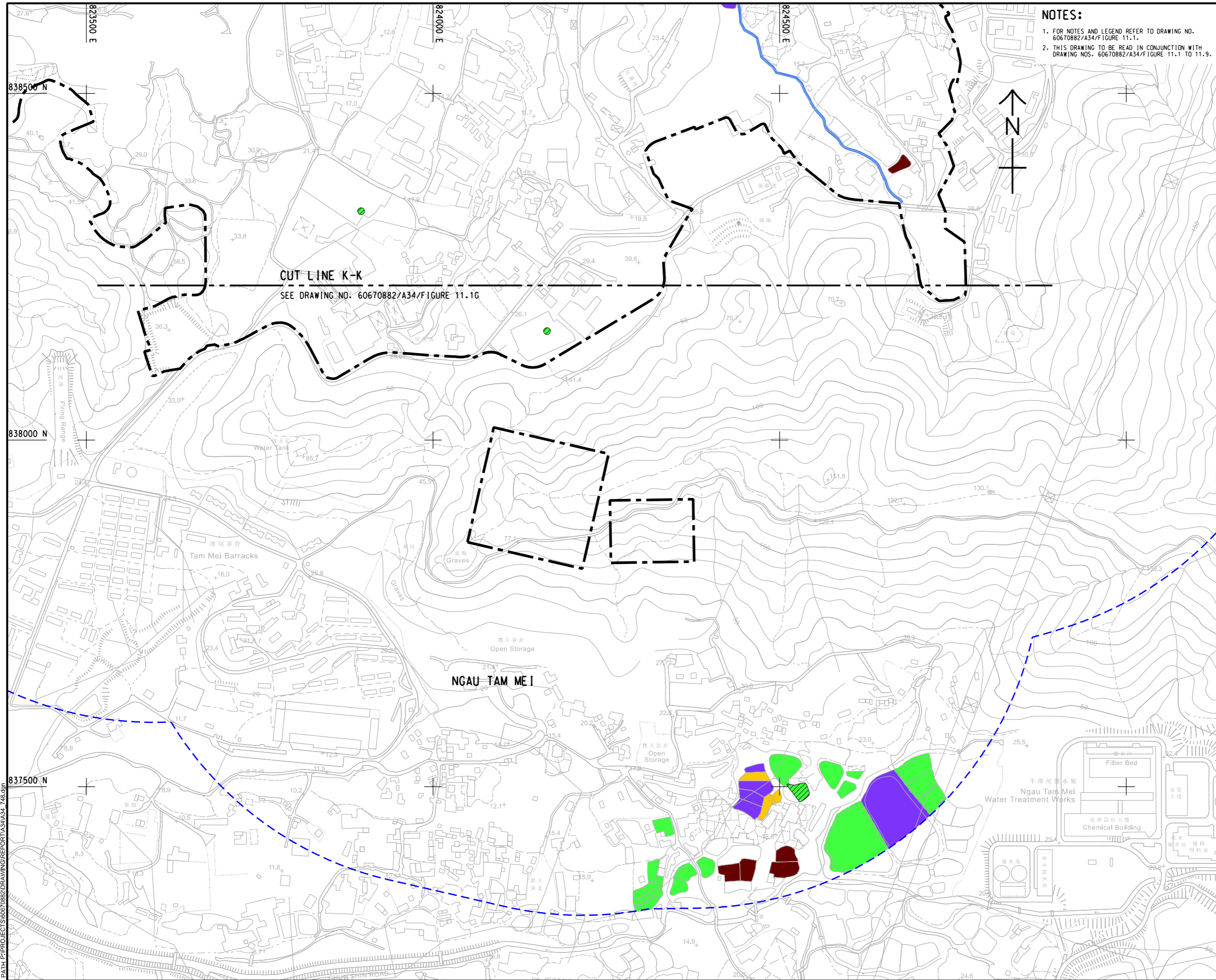
**SHEET TITLE**  
 圖紙名稱  
**FISHPONDS WITHIN THE ASSESSMENT AREA**

**SHEET NUMBER**  
 圖紙編號  
 60670882/A34/FIGURE 11.1G

SHEET 7 OF 9

This drawing has been prepared for the use of AECOM's client. It may not be used, modified, reproduced or relied upon by third parties, except as agreed by AECOM or as required by law. AECOM accepts no responsibility, and denies any liability whatsoever, to any party that uses or relies on this drawing without AECOM's express written consent. All measurements must be obtained from the stated dimensions.

ISO A1 594mm x 841mm  
Approved:  
Checked:  
Designer:  
Project Management Initials:



**NOTES:**  
 1. FOR NOTES AND LEGEND REFER TO DRAWING NO. 60670882/A34/F/FIGURE 11.1.  
 2. THIS DRAWING TO BE READ IN CONJUNCTION WITH DRAWING NOS. 60670882/A34/F/FIGURE 11.1 TO 11.9.



**PROJECT**  
 項目  
**FIRST PHASE DEVELOPMENT OF THE NEW TERRITORIES NORTH – SAN TIN / LOK MA CHAU DEVELOPMENT NODE – INVESTIGATION**

**CLIENT**  
 業主  
 **土木工程拓展署**  
 Civil Engineering and Development Department  
 **規劃署**  
 Planning Department

**CONSULTANT**  
 工程顧問公司  
 AECOM Asia Company Ltd.  
 www.aecom.com

**SUB-CONSULTANTS**  
 分判工程顧問公司

**ISSUE/REVISION**  
 修訂

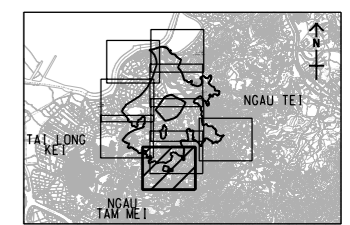
IR	DATE	DESCRIPTION	CHK.
修訂	日期	內容摘要	校核

**STATUS**  
 階段

**SCALE**  
 比例  
 A3 1 : 5000

**DIMENSION UNIT**  
 尺寸單位  
 METRES

**KEY PLAN** A3 1 : 250000  
 索引圖



**PROJECT NO.**  
 項目編號  
 60670882

**AGREEMENT NO.**  
 協議編號  
 CE 20/2021

**SHEET TITLE**  
 圖紙名稱  
**FISHPONDS WITHIN THE ASSESSMENT AREA**

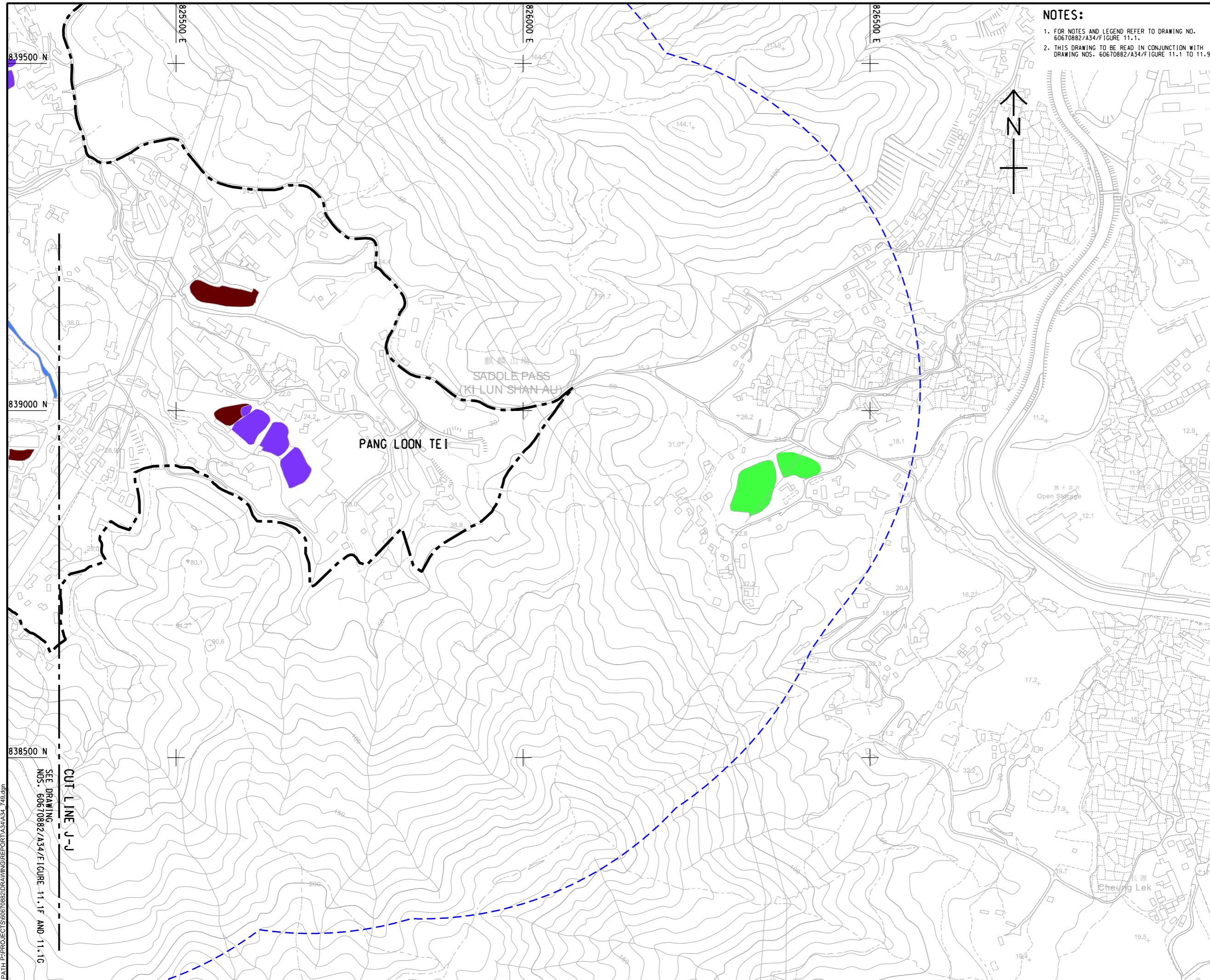
**SHEET NUMBER**  
 圖紙編號  
 60670882/A34/FIGURE 11.1H

Plot File by: YueFB  
 28/12/2023  
 PATH: P:\PROJECTS\60670882\DRAWING\REPORT\A34\A34\_745.dgn

This drawing has been prepared for the use of AECOM's client. It may not be used, modified, reproduced or relied upon by third parties, except as agreed by AECOM or as required by law. AECOM accepts no responsibility, and disclaims any liability, whatsoever, to any party, that uses or relies on this drawing without AECOM's express written consent. All measurements must be obtained from the stated dimensions.



ISO A1 594mm x 841mm  
 Approved:  
 Checked:  
 Designer:  
 Project Management Initials:  
 28/12/2023  
 Plot File by: YueFB  
 PATH: P:\PROJECTS\60670882\DRAWING\REPORT\A34\A34\_748.dgn



**NOTES:**

- FOR NOTES AND LEGEND REFER TO DRAWING NO. 60670882/A34/Figure 11.1.
- THIS DRAWING TO BE READ IN CONJUNCTION WITH DRAWING NOS. 60670882/A34/Figure 11.1 TO 11.9.



**PROJECT**

項目  
 FIRST PHASE DEVELOPMENT OF  
 THE NEW TERRITORIES NORTH –  
 SAN TIN / LOK MA CHAU  
 DEVELOPMENT NODE –  
 INVESTIGATION

**CLIENT**



**CONSULTANT**

AECOM Asia Company Ltd.  
 www.aecom.com

**SUB-CONSULTANTS**

**ISSUE/REVISION**

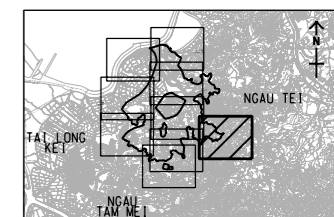
IR	DATE	DESCRIPTION	CHK.

**STATUS**

**SCALE**      **DIMENSION UNIT**

比例      尺寸單位  
 A3 1 : 5000      METRES

**KEY PLAN**      A3 1 : 250000



**PROJECT NO.**      **AGREEMENT NO.**

項目編號      協議編號  
 60670882      CE 20/2021

**SHEET TITLE**

圖紙名稱  
 FISHPONDS WITHIN THE  
 ASSESSMENT AREA

**SHEET NUMBER**

圖紙編號  
 60670882/A34/FIGURE 11.11

This drawing has been prepared for the use of AECOM's client. It may not be used, modified, reproduced or relied upon by third parties, except as agreed by AECOM or as required by law. AECOM accepts no responsibility, and disclaims any liability whatsoever, for any part, that is used or relied on in this drawing without AECOM's express written consent. All measurements must be obtained from the stated dimensions.