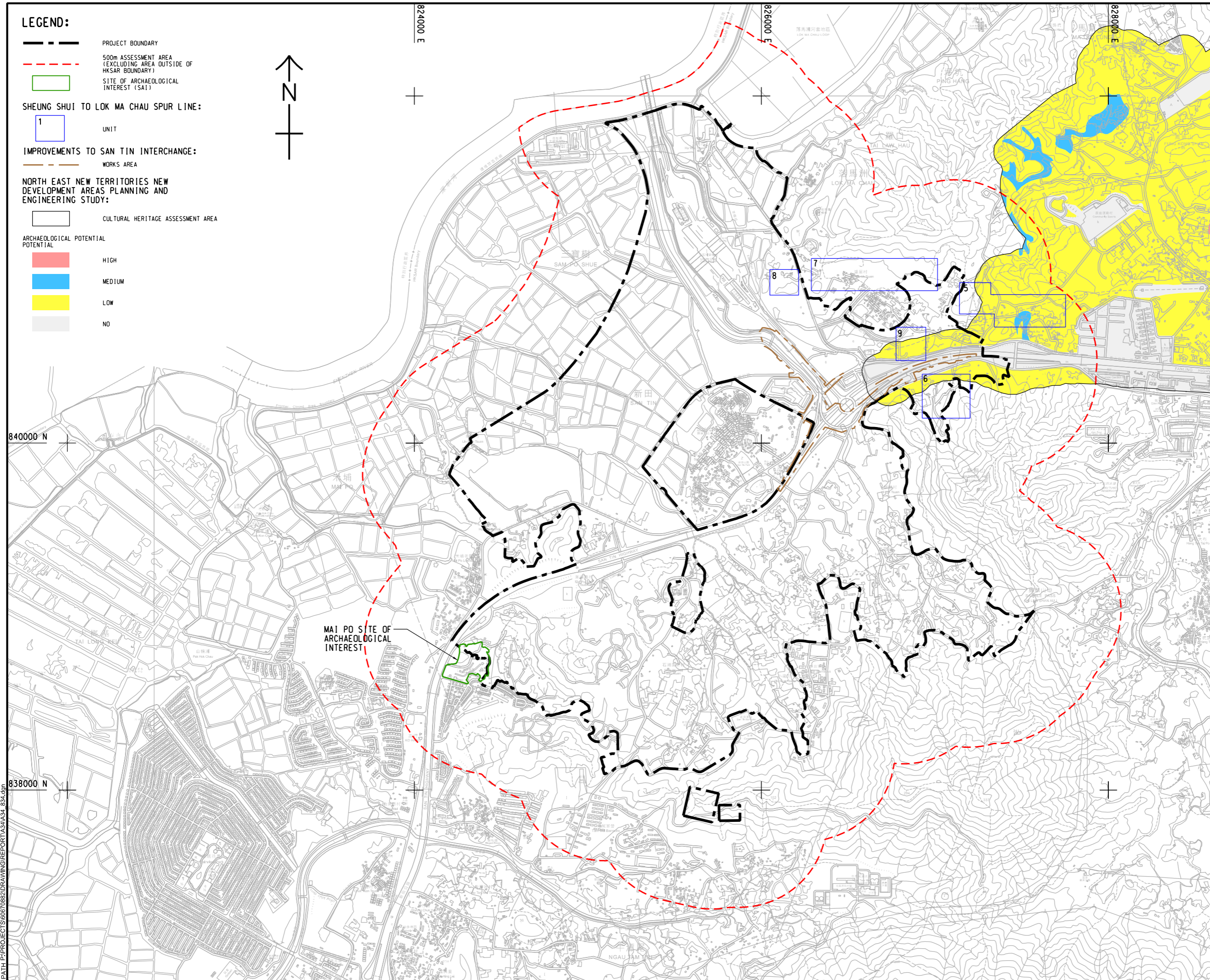


ISO A1 594mm x 841mm  
 Approved:  
 Checked:  
 Designer:  
 Project Management Initials:

- LEGEND:**
- PROJECT BOUNDARY
  - 500m ASSESSMENT AREA (EXCLUDING AREA OUTSIDE OF HKSAR BOUNDARY)
  - SITE OF ARCHAEOLOGICAL INTEREST (SAI)
  - SHEUNG SHUI TO LOK MA CHAU SPUR LINE:**
  - 1 UNIT
  - IMPROVEMENTS TO SAN TIN INTERCHANGE:**
  - WORKS AREA
  - NORTH EAST NEW TERRITORIES NEW DEVELOPMENT AREAS PLANNING AND ENGINEERING STUDY:**
  - CULTURAL HERITAGE ASSESSMENT AREA
  - ARCHAEOLOGICAL POTENTIAL**
  - HIGH
  - MEDIUM
  - LOW
  - NO



**AECOM**

**PROJECT**  
 項目  
 FIRST PHASE DEVELOPMENT OF THE NEW TERRITORIES NORTH – SAN TIN / LOK MA CHAU DEVELOPMENT NODE – INVESTIGATION

**CLIENT**  
 業主  
 土木工程拓展署  
 Civil Engineering and Development Department  
 規劃署  
 Planning Department

**CONSULTANT**  
 工程顧問公司  
 AECOM Asia Company Ltd.  
 www.aecom.com

**SUB-CONSULTANTS**  
 分判工程師/顧問公司

**ISSUE/REVISION**  
 修訂

IR	DATE	DESCRIPTION	CHK.

**STATUS**  
 階段

**SCALE**  
 比例  
 A3 1 : 20000

**DIMENSION UNIT**  
 尺寸單位  
 METRES

**KEY PLAN**  
 索引圖

**PROJECT NO.**  
 項目編號  
 60670882

**AGREEMENT NO.**  
 協議編號  
 CE 20/2021

**SHEET TITLE**  
 圖紙名稱  
 ARCHAEOLOGICAL BACKGROUND (1)

**SHEET NUMBER**  
 圖紙編號  
 60670882/A34/FIGURE 12.4

This drawing has been prepared for the use of AECOM's client. It may not be used, modified, reproduced or relied upon by third parties, except as agreed by AECOM's client. It may not be used, modified, reproduced or relied upon by third parties, except as agreed by AECOM's client. Do not scale this document. All measurements must be obtained from the digital dimensions.

Plot File by: haiquan.zhao 11/14/2023  
 PATH P:\PROJECTS\60670882\DRAWING\REPORT\A34\A34\_834.dgn

ISO A1 594mm x 841mm  
 Approved:  
 Checked:  
 Designer:  
 Project Management Initials:  
 Plot File by: haipun.zhao 11/14/2023  
 PATH P:\PROJECTS\60670882\DRAWING\REPORT\A34\A34\_035.dgn

**LEGEND:**

- PROJECT BOUNDARY
- 500m ASSESSMENT AREA (EXCLUDING AREA OUTSIDE OF HKSAR BOUNDARY)

**SHEUNG SHUI TO LOK MA CHAU SPUR LINE:**

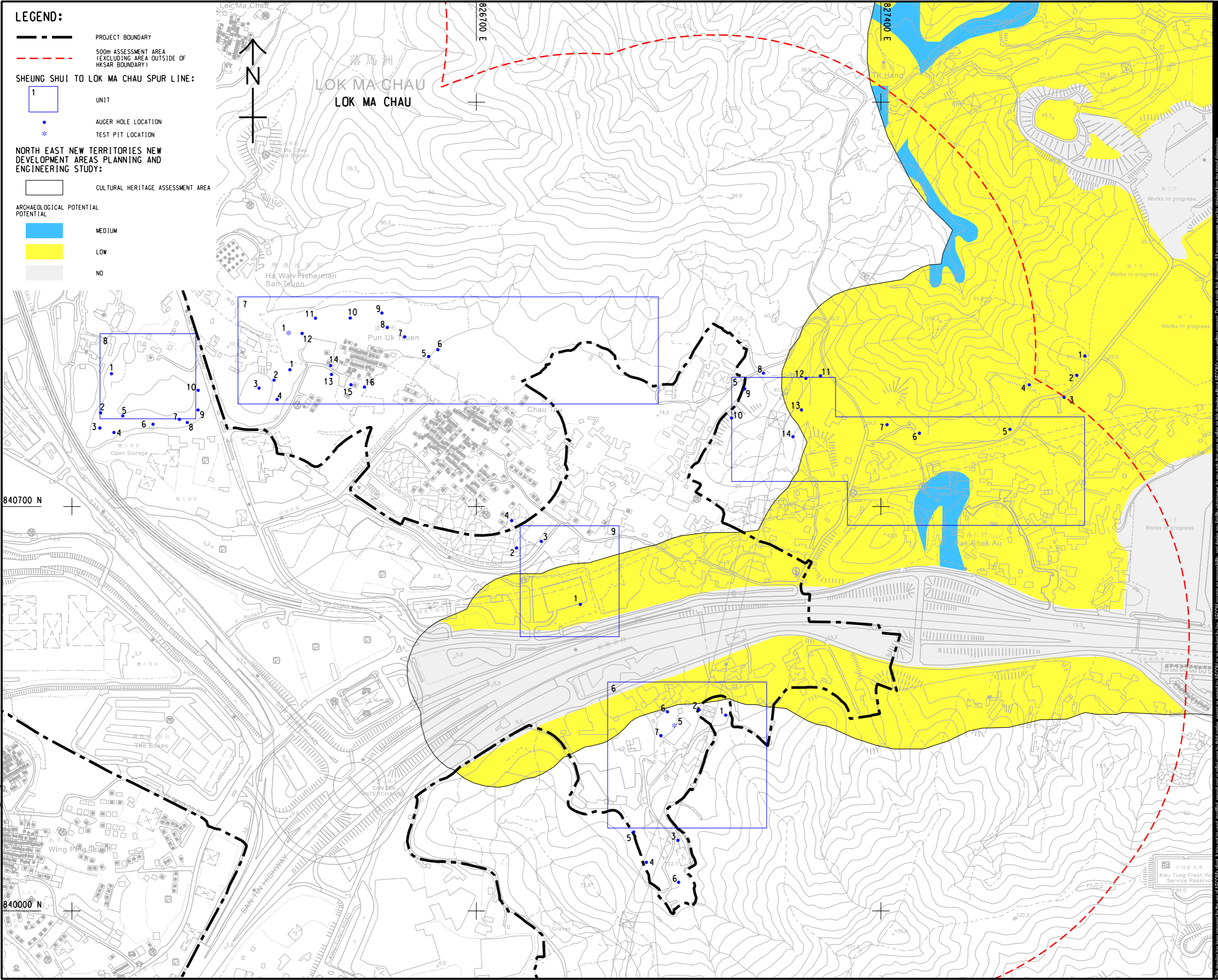
- UNIT
- AUGER HOLE LOCATION
- \* TEST PIT LOCATION

**NORTH EAST NEW TERRITORIES NEW DEVELOPMENT AREAS PLANNING AND ENGINEERING STUDY:**

- CULTURAL HERITAGE ASSESSMENT AREA

**ARCHAEOLOGICAL POTENTIAL**

- MEDIUM
- LOW
- NO



**PROJECT**  
 項目  
 FIRST PHASE DEVELOPMENT OF THE NEW TERRITORIES NORTH – SAN TIN / LOK MA CHAU DEVELOPMENT NODE – INVESTIGATION

**CLIENT**  
 業主  
 土木工程拓展署  
 Civil Engineering and Development Department  
 規劃署  
 Planning Department

**CONSULTANT**  
 土庫顧問公司  
 AECOM Asia Company Ltd.  
 www.aecom.com

**SUB-CONSULTANTS**  
 分判土庫顧問公司

**ISSUE/REVISION**  
 修訂

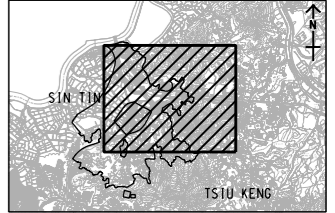
IR	DATE	DESCRIPTION	CHK.

**STATUS**  
 階段

**SCALE**  
 比例  
 A3 1 : 6000

**DIMENSION UNIT**  
 尺寸單位  
 METRES

**KEY PLAN** A3 1 : 200000  
 索引圖



**PROJECT NO.**  
 項目編號  
 60670882

**AGREEMENT NO.**  
 協議編號  
 CE 20/2021

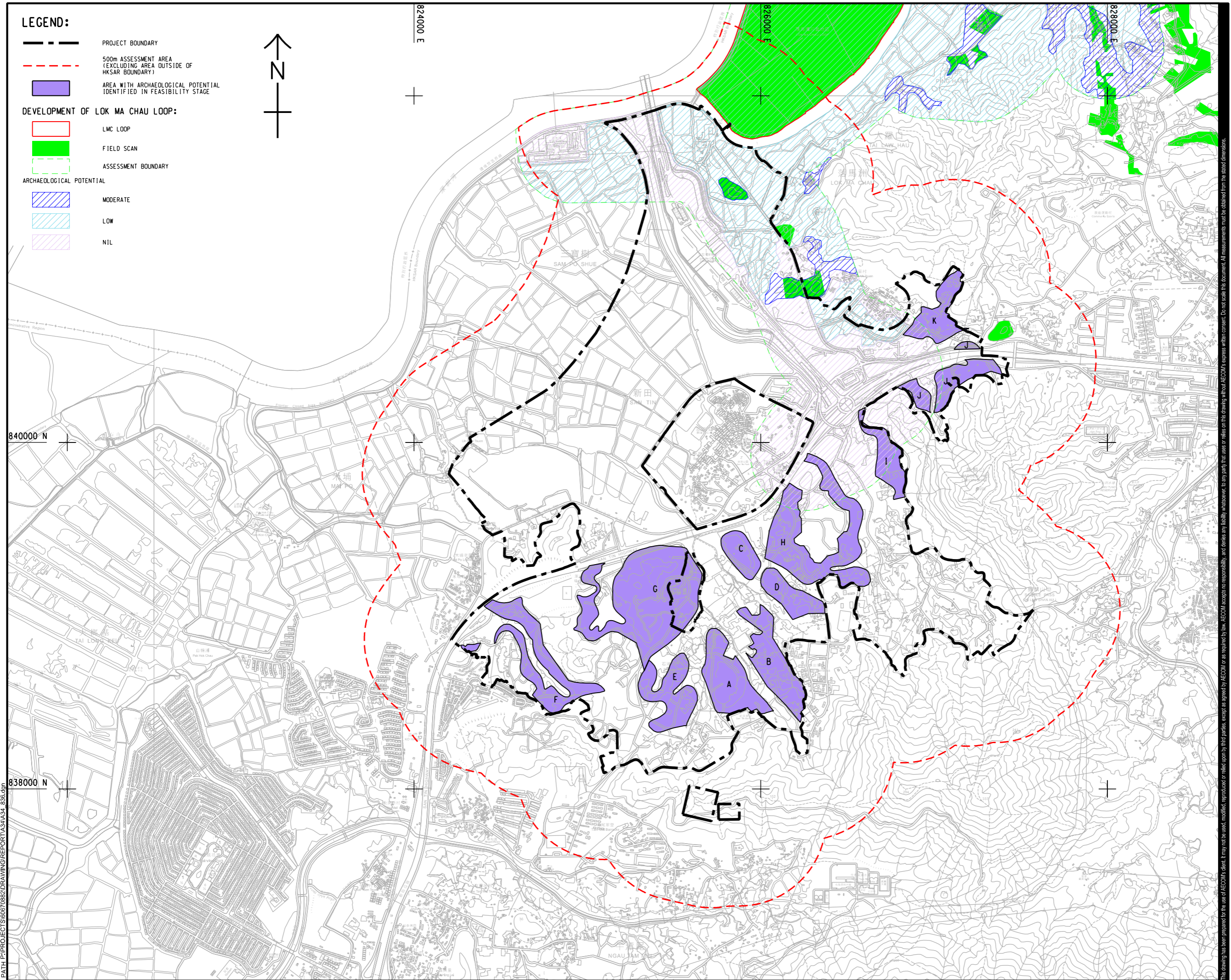
**SHEET TITLE**  
 圖紙名稱  
 ARCHAEOLOGICAL BACKGROUND (2)

**SHEET NUMBER**  
 圖紙編號  
 60670882/A34/FIGURE 12.5

This drawing has been prepared for the use of AECOM's client. It may not be used, modified, reproduced or relied upon by third parties, except as agreed by AECOM or as required by law. AECOM accepts no responsibility, and disclaims any liability, whatsoever, to any party, that relies on this drawing without AECOM's express written consent. All measurements must be obtained from the stated dimensions.

ISO A1 594mm x 841mm  
Approved:  
Checked:  
Designer:  
Project Management Initials:

- LEGEND:**
- PROJECT BOUNDARY
  - 500m ASSESSMENT AREA (EXCLUDING AREA OUTSIDE OF HKSAR BOUNDARY)
  - AREA WITH ARCHAEOLOGICAL POTENTIAL IDENTIFIED IN FEASIBILITY STAGE
- DEVELOPMENT OF LOK MA CHAU LOOP:**
- LMC LOOP
  - FIELD SCAN
  - ASSESSMENT BOUNDARY
- ARCHAEOLOGICAL POTENTIAL**
- MODERATE
  - LOW
  - NIL



840000 N

838000 N

824000 E

826000 E

828000 E

Plot File by: haiquan.zhao 11/14/2023  
PATH: P:\PROJECTS\60670882\DRAWING\REPORT\A34\A34\_836.dwg

**AECOM**

**PROJECT**  
項目  
FIRST PHASE DEVELOPMENT OF THE NEW TERRITORIES NORTH – SAN TIN / LOK MA CHAU DEVELOPMENT NODE – INVESTIGATION

**CLIENT**  
業主  
 土木工程拓展署  
Civil Engineering and Development Department  
 規劃署  
Planning Department

**CONSULTANT**  
顧問公司  
AECOM Asia Company Ltd.  
www.aecom.com

**SUB-CONSULTANTS**  
分判工程師有限公司

**ISSUE/REVISION**  
修訂

NO.	DATE	DESCRIPTION	CHK.

**STATUS**  
階段

**SCALE**  
比例  
A3 1 : 20000

**DIMENSION UNIT**  
尺寸單位  
METRES

**KEY PLAN**  
索引圖

**PROJECT NO.**  
項目編號  
60670882

**AGREEMENT NO.**  
協議編號  
CE 20/2021

**SHEET TITLE**  
圖紙名稱  
ARCHAEOLOGICAL BACKGROUND (3)

**SHEET NUMBER**  
圖紙編號  
60670882/A34/FIGURE 12.6

This drawing has been prepared for the use of AECOM's client. It may not be used, modified, reproduced or relied upon by third parties, except as agreed by AECOM or as required by law. AECOM accepts no responsibility, and disclaims any liability, whatsoever, for any part, that uses or relies on this drawing without AECOM's express written consent. Do not scale this document. All measurements must be obtained from the stated dimensions.