

ISO A1 594mm x 841mm
 Approved:
 Checked:
 Designer:
 Project Management Initials:
 Photo File by: Liang Y
 PATH PROJECTS\60670882\DRAWING\REPORT\A34\A34_162.dwg
 2024/12

LEGEND:

- PROJECT BOUNDARY
- 500m ASSESSMENT AREA
- DEEP BAY BUFFER ZONE 2
- CONSERVATION AREA

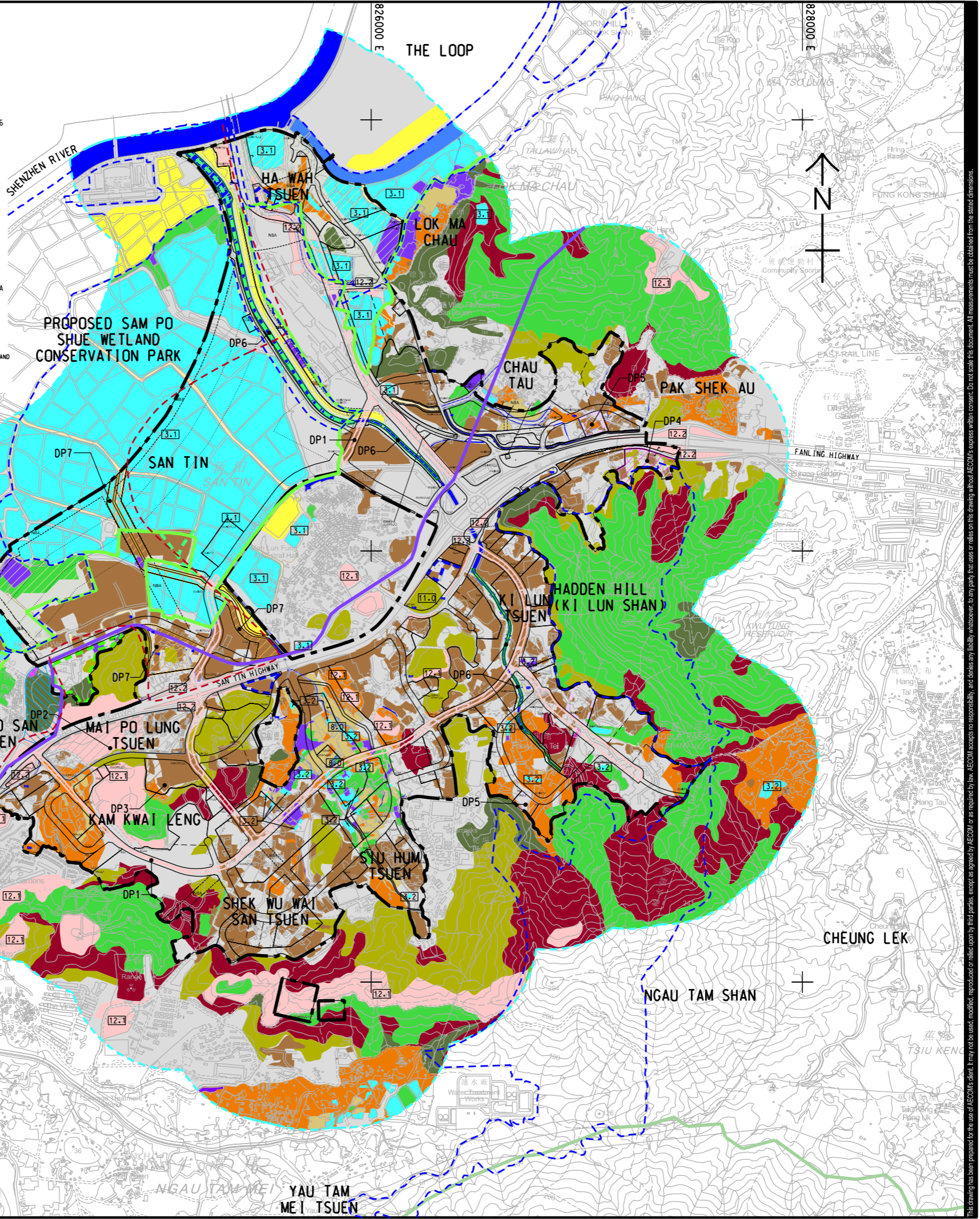
LANDSCAPE RESOURCES (LRs)

- LR1.0 MARSH / REED
- LR2.0 COMPENSATORY WETLAND
- LR3.0 POND
- LR4.0 NATURAL WATERCOURSE
- LR5.0 MODIFIED WATERCOURSE
- LR6.0 SEMI-NATURAL WATERCOURSE
- LR7.0 SEASONALLY WET GRASSLAND
- LR8.0 WET AGRICULTURAL LAND
- LR9.0 DRY AGRICULTURAL LAND
- LR10.0 WOODLAND
- LR11.0 MIXED WOODLAND
- LR12.0 PLANTATION
- LR13.0 SHRUBLAND
- LR14.0 GRASSLAND
- LR15.0 VILLAGE / ORCHARD
- LR16.0 DEVELOPED AREA
- LR17.0 WASTELAND/ OPEN STORAGE/ TEMPORARY AREA
- MAI PO VILLAGE SSSI

- T1 TPEE OF PARTICULAR INTEREST
- LAM TSUEN COUNTRY PARK
- BOUNDARY OF WETLAND CONSERVATION AREA
- BOUNDARY OF WETLAND BUFFER AREA

- DP1' CONSTRUCTION AND OPERATION OF PRIMARY DISTRIBUTOR ROAD (P1, DISTRICT DISTRIBUTOR ROAD 01, 02, 03, 04, 05 AND 06)
- DP2' CONSTRUCTION AND OPERATION OF STLMC EFFLUENT POLISHING PLANT AND FOOD WASTE PRE-TREATMENT FACILITIES
- DP3' CONSTRUCTION AND OPERATION OF STLMC RECLAIMED WATER FACILITY
- DP4' CONSTRUCTION AND OPERATION OF A REFUSE TRANSFER STATION
- DP5' CONSTRUCTION AND OPERATION OF TWO 400KV ELECTRICITY SUBSTATIONS
- DP6' REVITALISATION WORKS (I.E. RIVER TRAINING, DIVERSION WORKS) FOR SAN TIN EASTERN MAIN DRAINAGE CHANNEL ARE LOCATED LESS THAN 300M FROM CONSERVATION AREA
- DP7' RECREATIONAL DEVELOPMENT FOR PROPOSED SITES Q.1.1, Q.1.2, AND Q.1.3 (AS OPEN SPACE) ENCROACH INTO DEEP BAY BUFFER ZONE 2 CONSTRUCTION INVOLVING EARTHWORKS AND BUILDING WORKS WITHIN CONSERVATION AREA TO BE RE-ZONED BEFORE COMMENCEMENT OF CONSTRUCTION WORKS (NOT CONSIDERED AS ITEM Q.1, PART 1, SCHEDULE 2 OF E1A0)

NOTE: 1 SUBJECT TO AN ENVIRONMENTAL PERMIT APPLICATION FOR BOTH CONSTRUCTION AND OPERATION PHASES OF THE DP UNDER THIS EIA STUDY.
 2 SUBJECT TO SEPARATE EIA STUDY, AS REQUIRED.
 3 THE FUTURE ZONING OF THE CONCERNED 'CONSERVATION AREA' ARE SUBJECT TO CHANGE DUE TO LAND USE PROPOSALS AS REFLECTED IN THE REVISED RDP.



AECOM

PROJECT
 項目
FIRST PHASE DEVELOPMENT OF THE NEW TERRITORIES NORTH - SAN TIN / LOK MA CHAU DEVELOPMENT NODE - INVESTIGATION

CLIENT
 業主
 CEDD 土木工程拓展署
 Civil Engineering and Development Department
 規劃署
 Planning Department

CONSULTANT
 顧問公司
 AECOM Asia Company Ltd.
 www.aecom.com

SUB-CONSULTANTS
 分判工程師/顧問公司

ISSUE/REVISION
 修訂

IR	DATE	DESCRIPTION	CHK.

STATUS
 階段

SCALE **DIMENSION UNIT**
 比例 尺寸單位
 A3 1 : 20000 METRES

KEY PLAN
 索引圖

PROJECT NO. **AGREEMENT NO.**
 項目編號 協議編號
 60670882 CE 20/2021

SHEET TITLE
 圖紙名稱
LANDSCAPE RESOURCE IMPACT PLAN

SHEET NUMBER
 圖紙編號
 60670882/A34/FIGURE 14.10

This drawing has been prepared for the use of AECOM's client. It may not be used, modified, reproduced or relied upon by third parties, except as agreed by AECOM or as required by law. AECOM accepts no responsibility, and disclaims any liability, whatsoever, for any part, that assess or relies on this drawing without AECOM's express written consent. All measurements must be obtained from the stated dimensions.

ISO A1 594mm x 841mm
Approved:
Checked:
Designer:
Project Management Initials:
2023/12/27
P:\PROJECTS\60670882\DRAWING\REPORT\A34\A34_164.dgn
Plot File by: Tang E

LEGEND:

- PROJECT BOUNDARY
- 500m ASSESSMENT AREA
- DEEP BAY BUFFER ZONE 2
- CONSERVATION AREA

LANDSCAPE RESOURCES (LRs)

- LR1.0 MARSH / REED
- LR2.0 COMPENSATORY WETLAND
- LR3.0 POND
- LR4.0 NATURAL WATERCOURSE
- LR5.0 MODIFIED WATERCOURSE
- LR6.0 SEMI-NATURAL WATERCOURSE
- LR7.0 SEASONALLY WET GRASSLAND
- LR8.0 WET AGRICULTURAL LAND
- LR9.0 DRY AGRICULTURAL LAND
- LR10.0 WOODLAND
- LR11.0 MIXED WOODLAND
- LR12.0 PLANTATION
- LR13.0 SHRUBLAND
- LR14.0 GRASSLAND
- LR15.0 VILLAGE / ORCHARD
- LR16.0 DEVELOPED AREA
- LR17.0 WASTELAND/ OPEN STORAGE/ TEMPORARY AREA
- MA1 PD VILLAGE SSSI

- T1
- TREE OF PARTICULAR INTEREST
- LAM TSUEN COUNTRY PARK
- BOUNDARY OF WETLAND CONSERVATION AREA
- BOUNDARY OF WETLAND BUFFER AREA
- DP1' CONSTRUCTION AND OPERATION OF PRIMARY DISTRIBUTOR ROAD P1, DISTRICT DISTRIBUTOR ROAD D1, D2, D3, D4, D5 AND D6
- DP2' CONSTRUCTION AND OPERATION OF STLMC EFFLUENT POLISHING PLANT AND FOOD WASTE PRE-TREATMENT FACILITIES
- DP3' CONSTRUCTION AND OPERATION OF STLMC RECLAIMED WATER FACILITY
- DP4' CONSTRUCTION AND OPERATION OF A REFUSE TRANSFER STATION
- DP5' CONSTRUCTION AND OPERATION OF TWO 400KV ELECTRICITY SUBSTATIONS
- DP6' REVITALISATION WORKS (I.E. RIVER TRAINING, DIVERSION WORKS) FOR SAN TIN EASTERN MAIN DRAINAGE CHANNEL ARE LOCATED LESS THAN 300M FROM CONSERVATION AREA
- DP7' RECREATIONAL DEVELOPMENT FOR PROPOSED SITES O.1.1, O.1.2, AND O.1.3 (AS OPEN SPACE) ENCROACH INTO DEEP BAY BUFFER ZONE 2
- CONSTRUCTION INVOLVING EARTHWORKS AND BUILDING WORKS WITHIN CONSERVATION AREA TO BE RE-ZONED BEFORE COMMENCEMENT OF CONSTRUCTION WORKS (NOT CONSIDERED AS ITEM O.1, PART 1, SCHEDULE 2 OF EIAO)

NOTE: 1 SUBJECT TO AN ENVIRONMENTAL PERMIT APPLICATION FOR BOTH CONSTRUCTION AND OPERATION PHASES OF THE DP UNDER THIS EIA STUDY.
2 SUBJECT TO SEPARATE EIA STUDY, AS REQUIRED.
3 THE FUTURE ZONING OF THE CONCERNED 'CONSERVATION AREA' ARE SUBJECT TO CHANGE DUE TO LAND USE PROPOSALS AS REFLECTED IN THE REVISED ZONING.

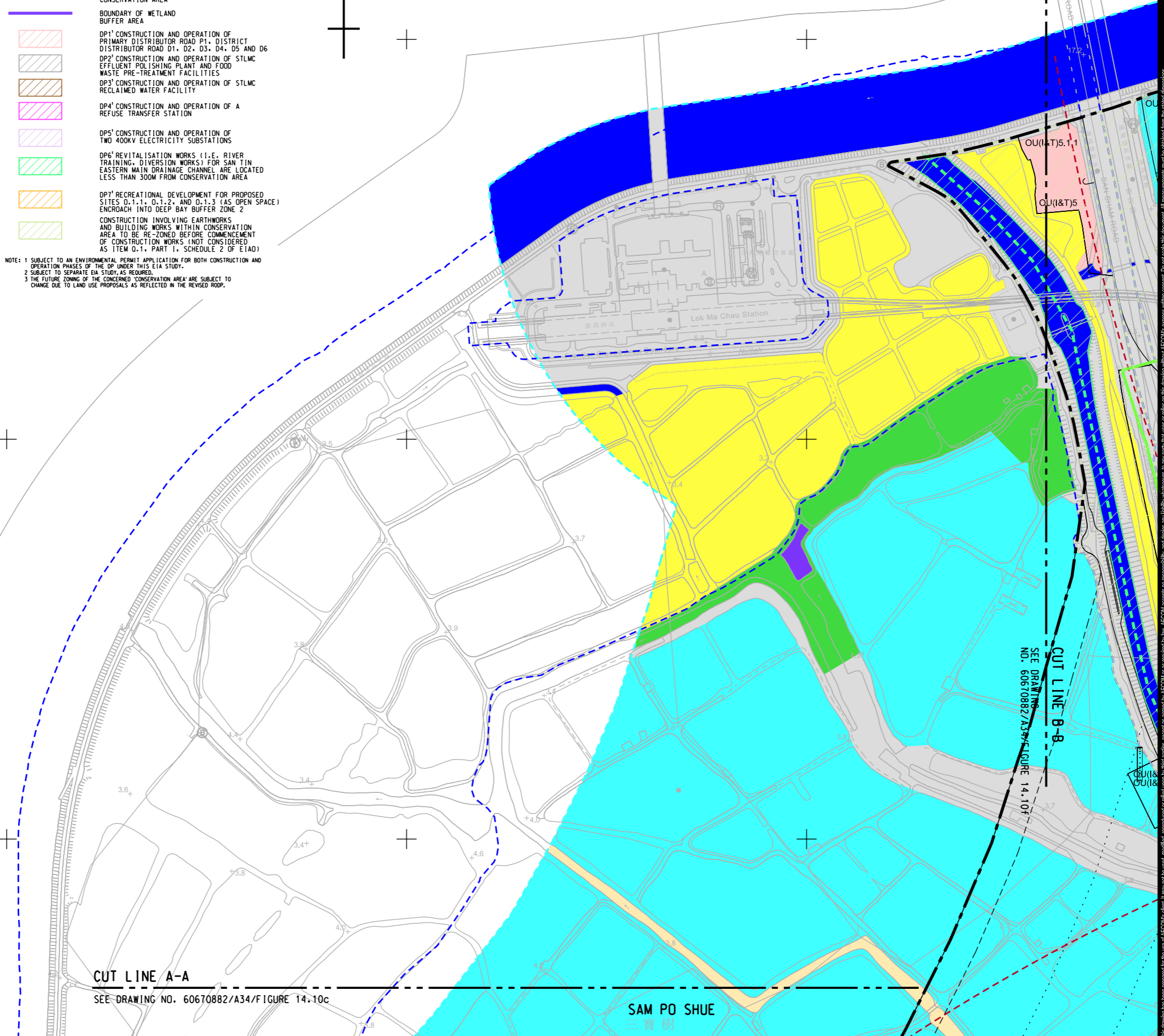


841000 N

824000 E

824500 E

825000 E



CUT LINE A-A
SEE DRAWING NO. 60670882/A34/FIGURE 14.10c

SAM PO SHUE
三寶樹



PROJECT
項目
FIRST PHASE DEVELOPMENT OF THE NEW TERRITORIES NORTH – SAN TIN / LOK MA CHAU DEVELOPMENT NODE – INVESTIGATION

CLIENT
業主
 土木工程拓展署
Civil Engineering and Development Department
 規劃署
Planning Department

CONSULTANT
顧問公司
AECOM Asta Company Ltd.
www.aecom.com

SUB-CONSULTANTS
分包工程師/顧問公司

ISSUE/REVISION
修訂

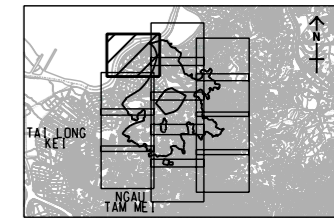
I/R	DATE	DESCRIPTION	CHK.

STATUS
階段

SCALE
比例
A3 1 : 5000

DIMENSION UNIT
尺寸單位
METRES

KEY PLAN
索引圖



PROJECT NO.
項目編號
60670882

AGREEMENT NO.
協議編號
CE 20/2021

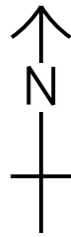
SHEET TITLE
圖紙名稱
LANDSCAPE RESOURCE IMPACT BLOW UP PLAN

SHEET NUMBER
圖紙編號
60670882/A34/FIGURE 14.10b

This drawing has been prepared for the use of AECOM's client. It may not be used, modified, reproduced or relied upon by third parties, except as agreed by AECOM or as required by law. AECOM accepts no responsibility, and denies any liability whatsoever, to any party that assesses or relies on this drawing without AECOM's express written consent. All measurements must be obtained from the stated dimensions.

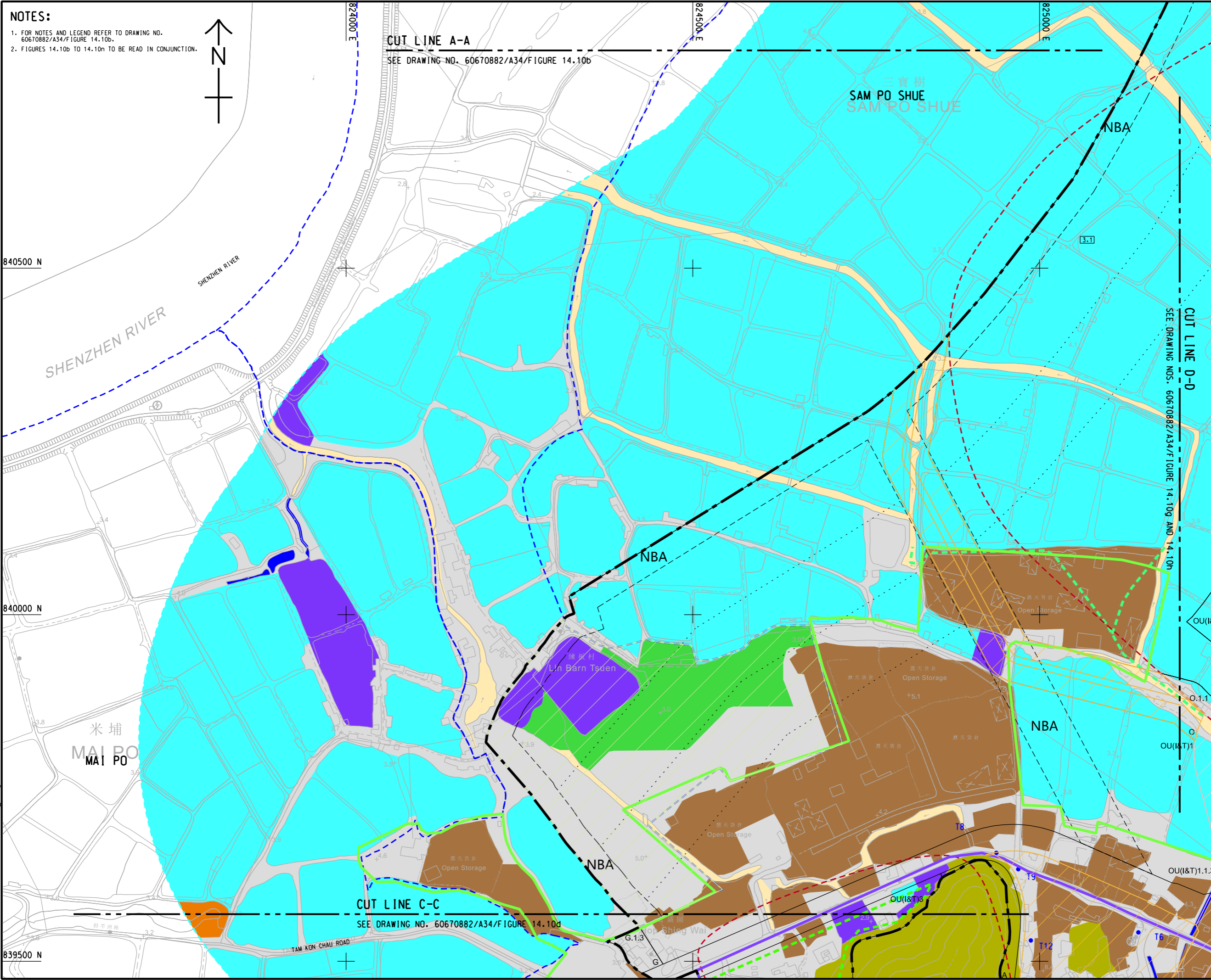
ISO A1 594mm x 841mm
Approved:
Checked:
Designer:
Project Management Initials:
840500 N
840000 N
839500 N
11/23/2023
C:\PATH\PROJECTS\60670882\DRAWING\REPORT\A34\A34_165.dgn

NOTES:
1. FOR NOTES AND LEGEND REFER TO DRAWING NO. 60670882/A34/FIGURE 14.10b.
2. FIGURES 14.10b TO 14.10n TO BE READ IN CONJUNCTION.



CUT LINE A-A
SEE DRAWING NO. 60670882/A34/FIGURE 14.10b

CUT LINE C-C
SEE DRAWING NO. 60670882/A34/FIGURE 14.10d



PROJECT
項目
FIRST PHASE DEVELOPMENT OF THE NEW TERRITORIES NORTH – SAN TIN / LOK MA CHAU DEVELOPMENT NODE – INVESTIGATION

CLIENT
業主
 土木工程拓展署
Civil Engineering and Development Department
 規劃署
Planning Department

CONSULTANT
土庫顧問公司
AECOM Asia Company Ltd.
www.aecom.com

SUB-CONSULTANTS
分判土庫顧問公司

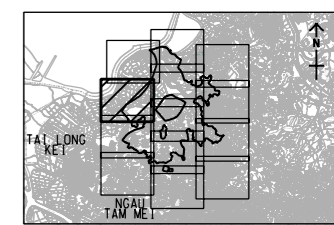
ISSUE/REVISION
修訂

NO.	DATE	DESCRIPTION	CHK.

STATUS
階段

SCALE
比例
A3 1 : 5000
A3 1 : 250000

DIMENSION UNIT
尺寸單位
METRES



PROJECT NO.
項目編號
60670882

AGREEMENT NO.
協議編號
CE 20/2021

SHEET TITLE
圖紙名稱
LANDSCAPE RESOURCE IMPACT BLOW UP PLAN

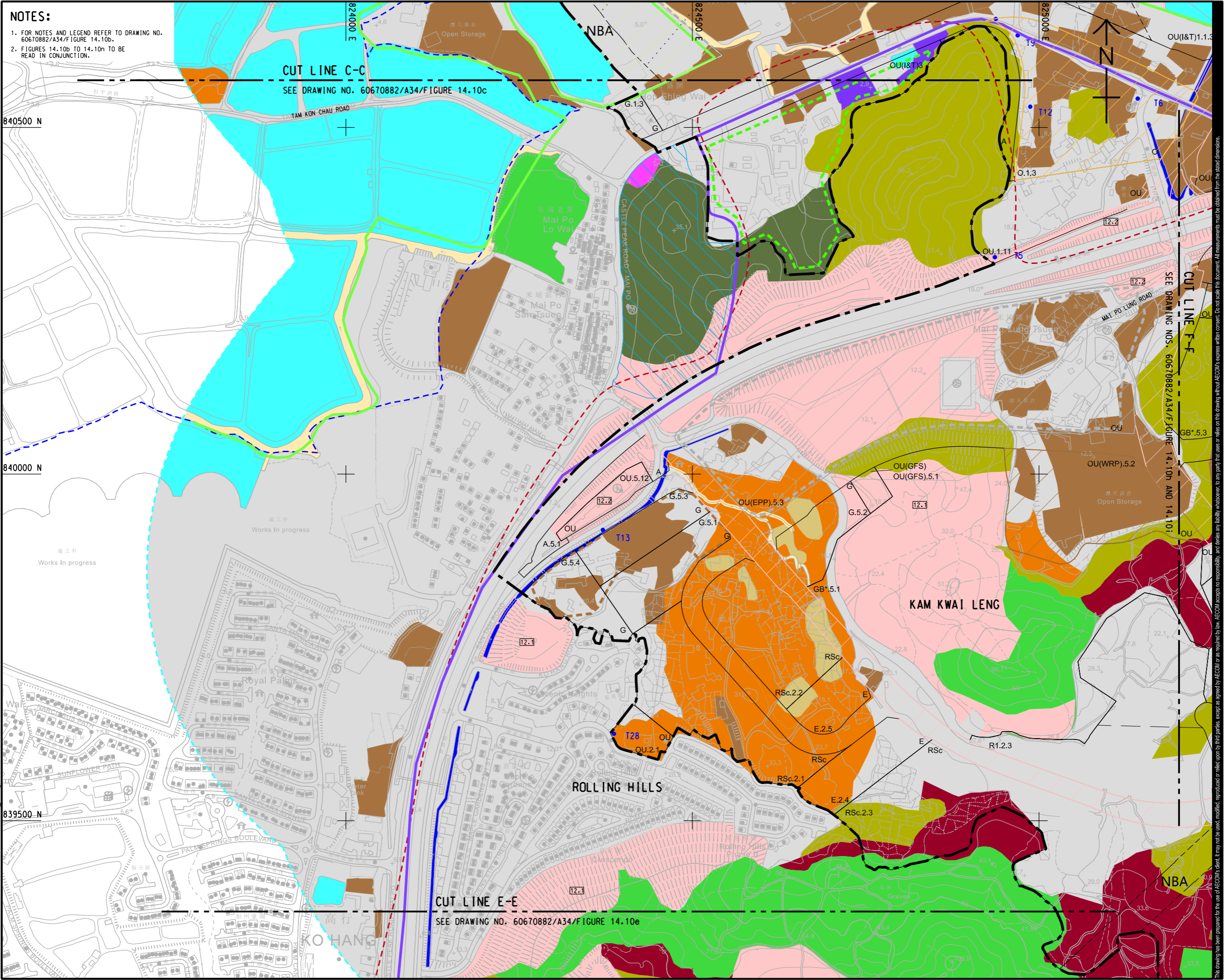
SHEET NUMBER
圖紙編號
60670882/A34/FIGURE 14.10c

This drawing has been prepared for the use of AECOM's client. It may not be used, modified, reproduced or relied upon by third parties, except as agreed by AECOM or as required by law. AECOM accepts no responsibility, and denies any liability whatsoever, to any party that uses or relies on this drawing without AECOM's express written consent. All measurements must be obtained from the stated dimensions.

ISO A1 594mm x 841mm
 Approved:
 Checked:
 Designer:
 Project Management Initials:
 2024/12
 Photo by: Liang Y
 PATH PROJECTS/60670882/DRAWINGREPORT/A34/A34_168.dgn

NOTES:

- FOR NOTES AND LEGEND REFER TO DRAWING NO. 60670882/A34/FIGURE 14.10b.
- FIGURES 14.10b TO 14.10n TO BE READ IN CONJUNCTION.



PROJECT
 項目
 FIRST PHASE DEVELOPMENT OF THE NEW TERRITORIES NORTH – SAN TIN / LOK MA CHAU DEVELOPMENT NODE – INVESTIGATION

CLIENT
 業主
 土木工程拓展署
 Civil Engineering and Development Department
 規劃署
 Planning Department

CONSULTANT
 工程顧問公司
 AECOM Asia Company Ltd.
 www.aecom.com

SUB-CONSULTANTS
 分判工程師/顧問公司

ISSUE/REVISION
 修訂

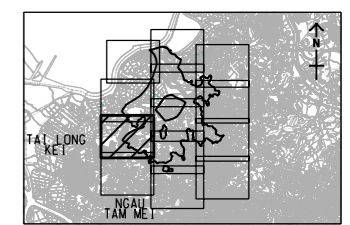
IR	DATE	DESCRIPTION	CHK.

STATUS
 階段

SCALE
 比例
 A3 1 : 5000

DIMENSION UNIT
 尺寸單位
 METRES

KEY PLAN A3 1 : 250000
 索引圖



PROJECT NO.
 項目編號
 60670882

AGREEMENT NO.
 協議編號
 CE 20/2021

SHEET TITLE
 圖紙名稱
 LANDSCAPE RESOURCE IMPACT BLOW UP PLAN

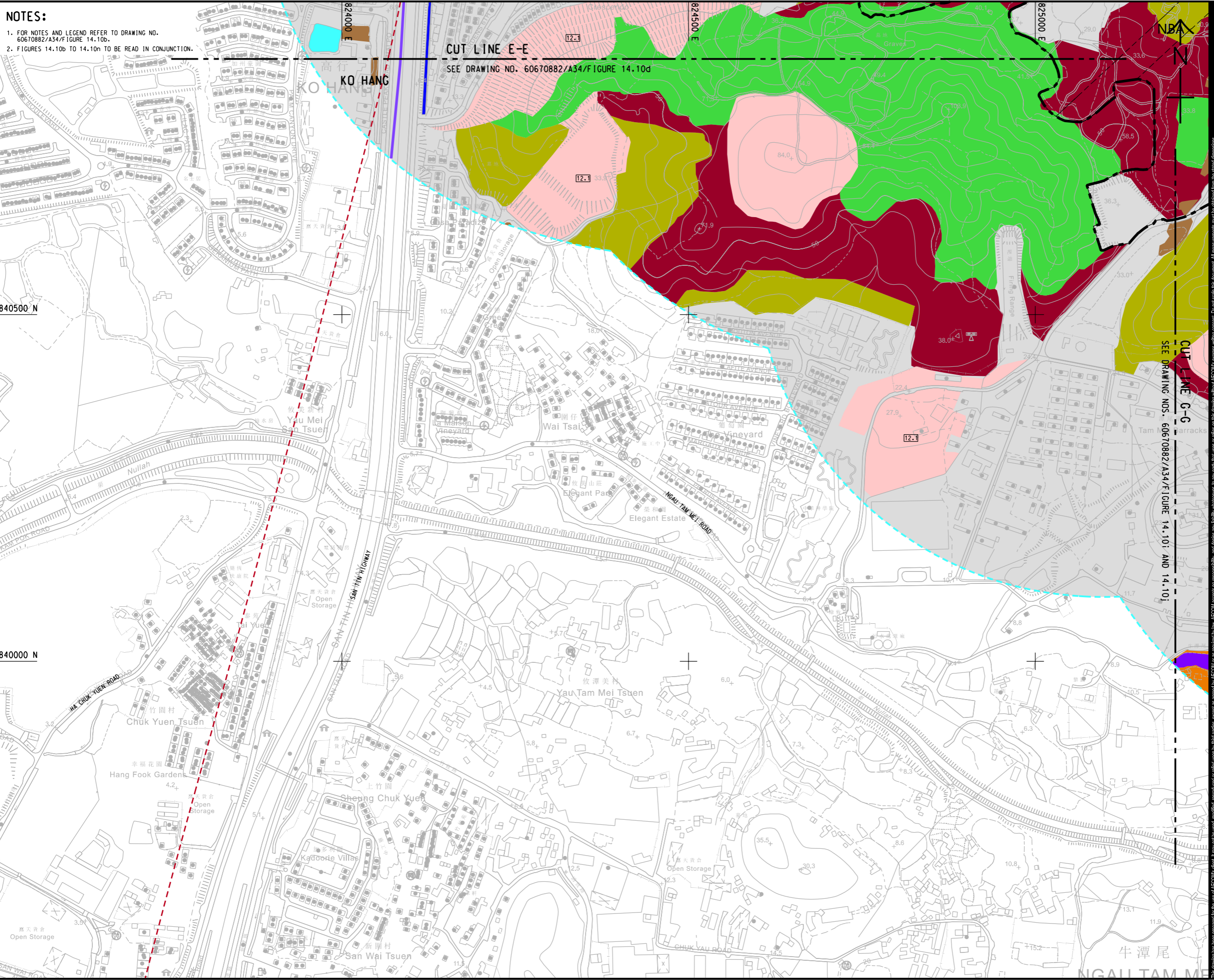
SHEET NUMBER
 圖紙編號
 60670882/A34/FIGURE 14.10d

This drawing has been prepared for the use of AECOM's client. It may not be used, modified, reproduced or relied upon by third parties, except as agreed by AECOM or as required by law. AECOM accepts no responsibility, and denies any liability, whatsoever, to any party, that uses or relies on this drawing without AECOM's express written consent. All measurements must be obtained from the stated dimensions.

ISO A1 594mm x 841mm
Approved:
Checked:
Designer:
Project Management Initials:
840500 N
840000 N
11/23/2023
P:\PROJECTS\60670882\DRAWING\REPORT\A34\A34_167.dgn
Plot File by: YangJ8

NOTES:

- FOR NOTES AND LEGEND REFER TO DRAWING NO. 60670882/A34/FIGURE 14.10b.
- FIGURES 14.10b TO 14.10n TO BE READ IN CONJUNCTION.



PROJECT
 項目
 FIRST PHASE DEVELOPMENT OF THE NEW TERRITORIES NORTH – SAN TIN / LOK MA CHAU DEVELOPMENT NODE – INVESTIGATION

CLIENT
 業主
 土木工程拓展署
 Civil Engineering and Development Department
 規劃署
 Planning Department

CONSULTANT
 顧問公司
 AECOM Asia Company Ltd.
 www.aecom.com

SUB-CONSULTANTS
 分判工程師/顧問公司

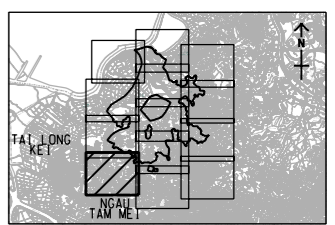
ISSUE/REVISION
 修訂

IR	DATE	DESCRIPTION	CHK.
修訂	日期	內容/描述	核對

STATUS
 階段

SCALE
 比例
 A3 1 : 5000
DIMENSION UNIT
 尺寸單位
 METRES

KEY PLAN A3 1 : 250000
 索引圖



PROJECT NO.
 項目編號
 60670882
AGREEMENT NO.
 協議編號
 CE 20/2021

SHEET TITLE
 圖紙名稱
 LANDSCAPE RESOURCE IMPACT BLOW UP PLAN

SHEET NUMBER
 圖紙編號
 60670882/A34/FIGURE 14.10e

This drawing has been prepared for the use of AECOM's client. It may not be used, modified, reproduced or relied upon by third parties, except as agreed by AECOM or as required by law. AECOM accepts no responsibility, and denies any liability, whatsoever, to any party that uses or relies on this drawing without AECOM's express written consent. Do not scale this document. All measurements must be obtained from the stated dimensions.

ISO A1 594mm x 841mm
 Approved: _____
 Checked: _____
 Designer: _____
 Project Management Initials: _____
 2024/12
 P:\PROJECTS\60670882\DRAWING\REPORT\A34\A34_168.dgn
 Plot File by: Liang Y

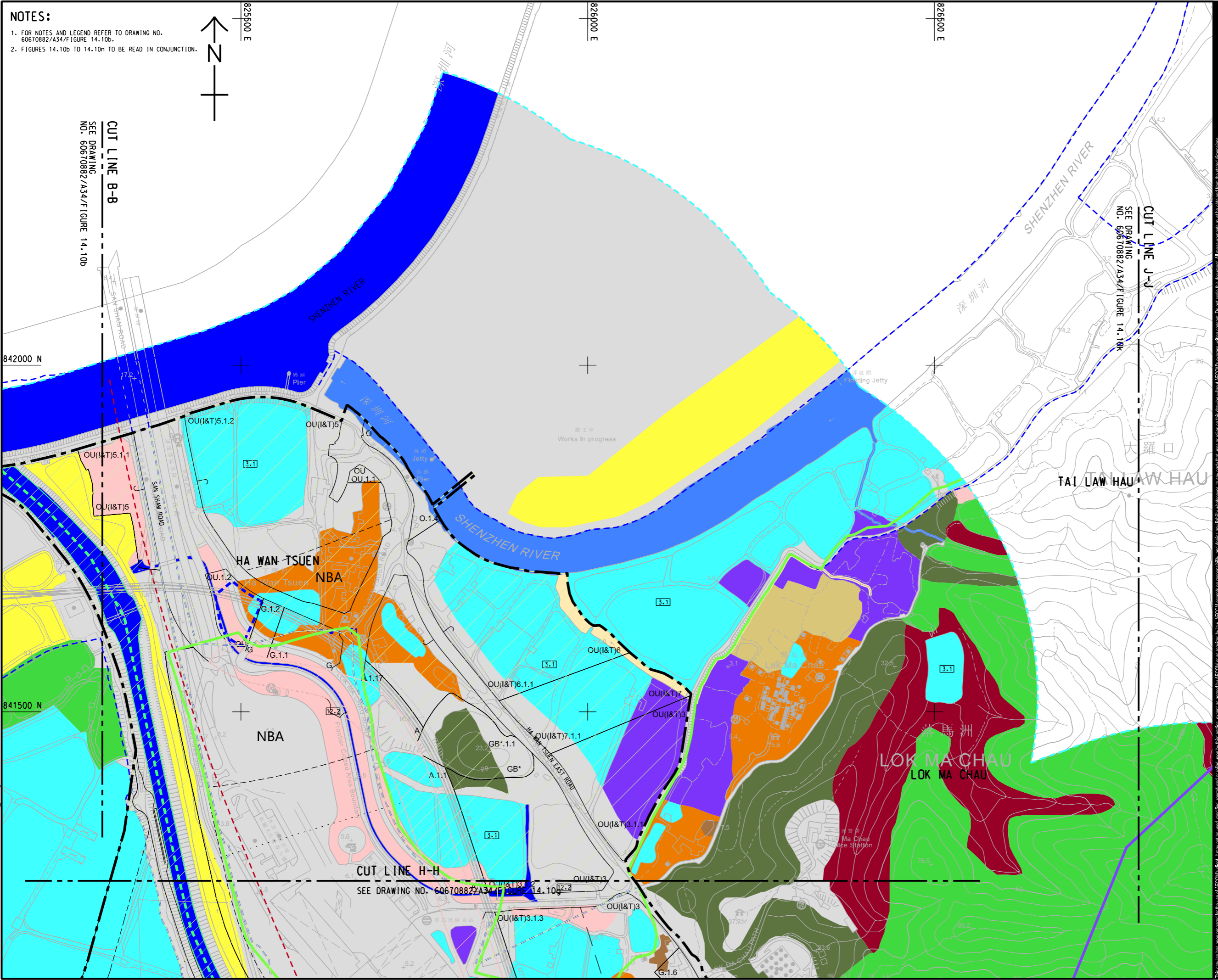
NOTES:

- FOR NOTES AND LEGEND REFER TO DRAWING NO. 60670882/A34/FIGURE 14.10b.
- FIGURES 14.10b TO 14.10n TO BE READ IN CONJUNCTION.



CUT LINE B-B
 SEE DRAWING NO. 60670882/A34/FIGURE 14.10b

CUT LINE J-J
 SEE DRAWING NO. 60670882/A34/FIGURE 14.10b



PROJECT
 項目
 FIRST PHASE DEVELOPMENT OF THE NEW TERRITORIES NORTH – SAN TIN / LOK MA CHAU DEVELOPMENT NODE – INVESTIGATION

CLIENT
 業主
 土木工程拓展署
 Civil Engineering and Development Department
 規劃署
 Planning Department

CONSULTANT
 顧問公司
 AECOM Asia Company Ltd.
 www.aecom.com

SUB-CONSULTANTS
 分包工程師/顧問公司

ISSUE/REVISION
 修訂

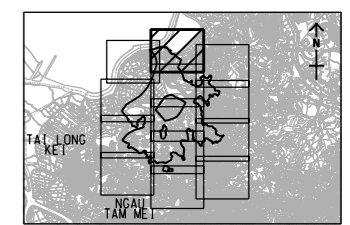
IR	DATE	DESCRIPTION	CHK.

STATUS
 階段

SCALE
 比例
 A3 1:5000

DIMENSION UNIT
 尺寸單位
 METRES

KEY PLAN A3 1:250000
 索引圖



PROJECT NO.
 項目編號
 60670882

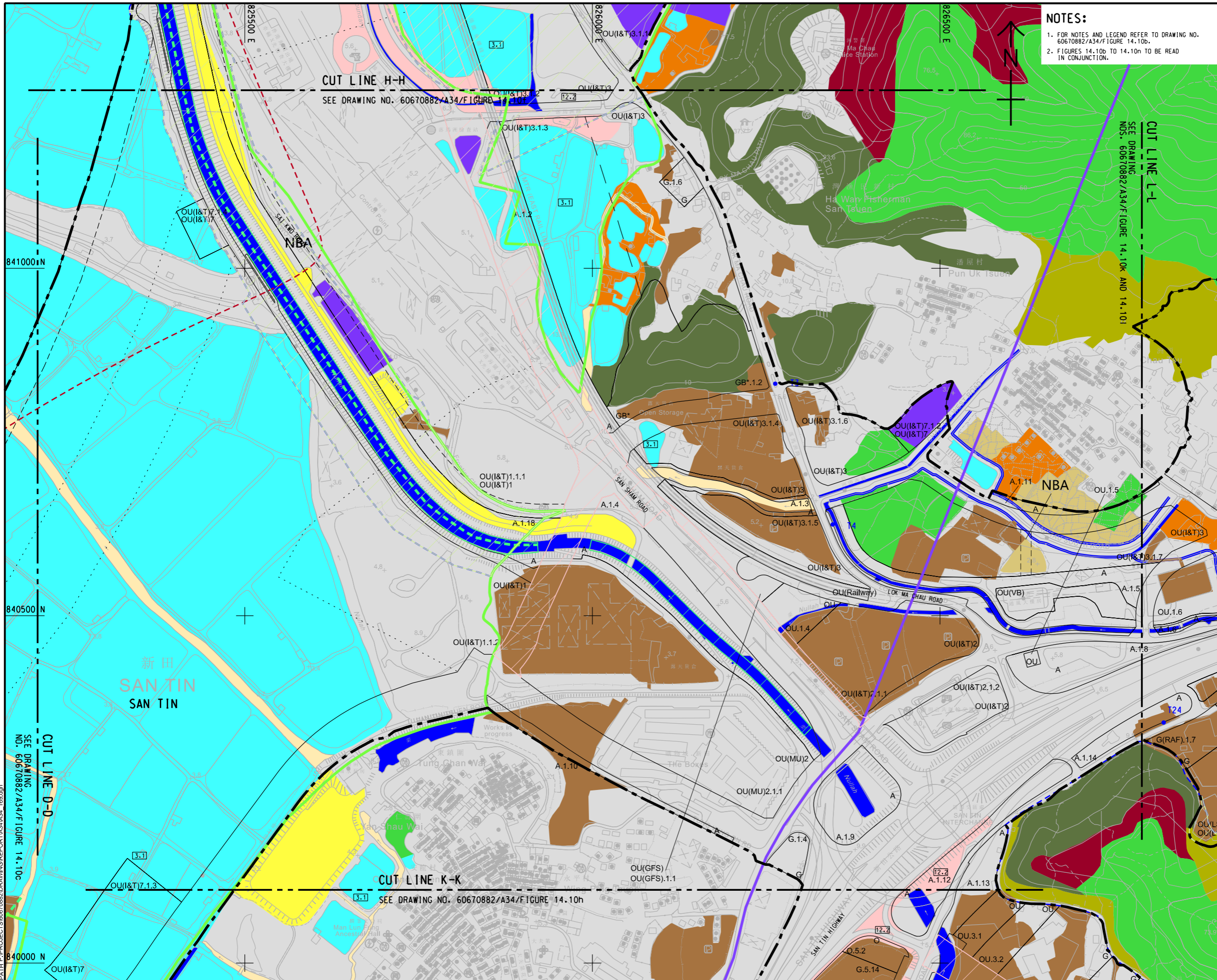
AGREEMENT NO.
 協議編號
 CE 20/2021

SHEET TITLE
 圖紙名稱
 LANDSCAPE RESOURCE IMPACT BLOW UP PLAN

SHEET NUMBER
 圖紙編號
 60670882/A34/FIGURE 14.10f

This drawing has been prepared for the use of AECOM's client. It may not be used, modified, reproduced or relied upon by third parties, except as agreed by AECOM or as required by law. AECOM accepts no responsibility, and disclaims any liability, whatsoever, for any part, that is less or relies on this drawing, without AECOM's express written consent. All measurements must be obtained from the stated dimensions.

ISO A1 594mm x 841mm
 Approved:
 Checked:
 Designer:
 Project Management Initials:
 11/23/2023
 PATH PROJECTS/60670882/DRAWINGREPORT/A34/A34_1682.dgn
 Plot File by: YangJ8



NOTES:
 1. FOR NOTES AND LEGEND REFER TO DRAWING NO. 60670882/A34/FIGURE 14.10b.
 2. FIGURES 14.10b TO 14.10n TO BE READ IN CONJUNCTION.

AECOM

PROJECT
 項目
 FIRST PHASE DEVELOPMENT OF THE NEW TERRITORIES NORTH – SAN TIN / LOK MA CHAU DEVELOPMENT NODE – INVESTIGATION

CLIENT
 業主
 土木工程拓展署
 Civil Engineering and Development Department
 規劃署
 Planning Department

CONSULTANT
 顧問公司
 AECOM Asia Company Ltd.
 www.aecom.com

SUB-CONSULTANTS
 分判工程師/顧問公司

ISSUE/REVISION
 修訂

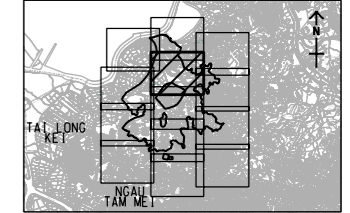
IR	DATE	DESCRIPTION	CHK.

STATUS
 階段

SCALE
 比例
 A3 1 : 5000

DIMENSION UNIT
 尺寸單位
 METRES

KEY PLAN
 索引圖
 A3 1 : 250000



PROJECT NO.
 項目編號
 60670882

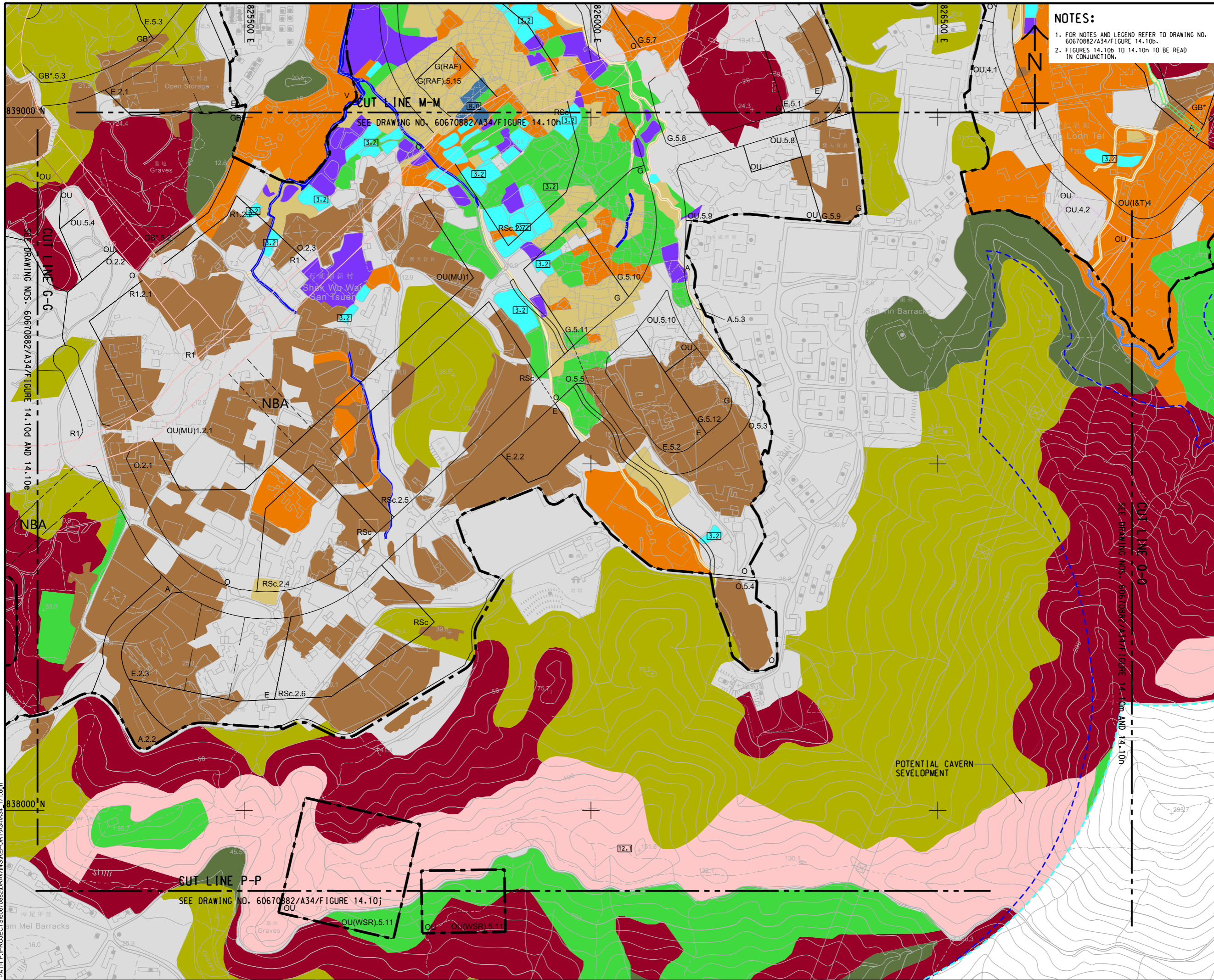
AGREEMENT NO.
 協議編號
 CE 20/2021

SHEET TITLE
 圖紙名稱
 LANDSCAPE RESOURCE IMPACT BLOW UP PLAN

SHEET NUMBER
 圖紙編號
 60670882/A34/FIGURE 14.10g

This drawing has been prepared for the use of AECOM's client. It may not be used, modified, reproduced or relied upon by third parties, except as agreed by AECOM or as required by law. AECOM accepts no responsibility, and denies any liability, whatsoever, to any party, that uses or relies on this drawing without AECOM's express written consent. All measurements must be obtained from the stated dimensions.

ISO A1 594mm x 841mm
 Approved:
 Checked:
 Designer:
 Project Management Initials:
 Plot File by: YangJ8
 PATH: P:\PROJECTS\60670882\DRAWING\REPORT\A34\A34_171.dgn
 11/23/2023



NOTES:

- FOR NOTES AND LEGEND REFER TO DRAWING NO. 60670882/A34/FIGURE 14.10b.
- FIGURES 14.10b TO 14.10n TO BE READ IN CONJUNCTION.



PROJECT
 項目
FIRST PHASE DEVELOPMENT OF THE NEW TERRITORIES NORTH – SAN TIN / LOK MA CHAU DEVELOPMENT NODE – INVESTIGATION

CLIENT
 業主
 **土木工程拓展署**
 Civil Engineering and Development Department
 **規劃署**
 Planning Department

CONSULTANT
 顧問公司
 AECOM Asia Company Ltd.
 www.aecom.com

SUB-CONSULTANTS
 分包工程師公司

ISSUE/REVISION
 修訂

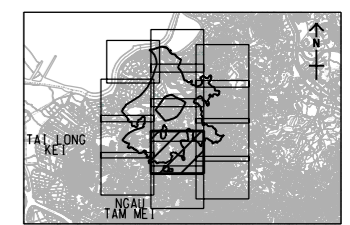
IR	DATE	DESCRIPTION	CHK.
修訂	日期	內容摘要	核對

STATUS
 階段

SCALE
 比例
 A3 1 : 5000

DIMENSION UNIT
 尺寸單位
 METRES

KEY PLAN A3 1 : 250000
 索引圖



PROJECT NO.
 項目編號
 60670882

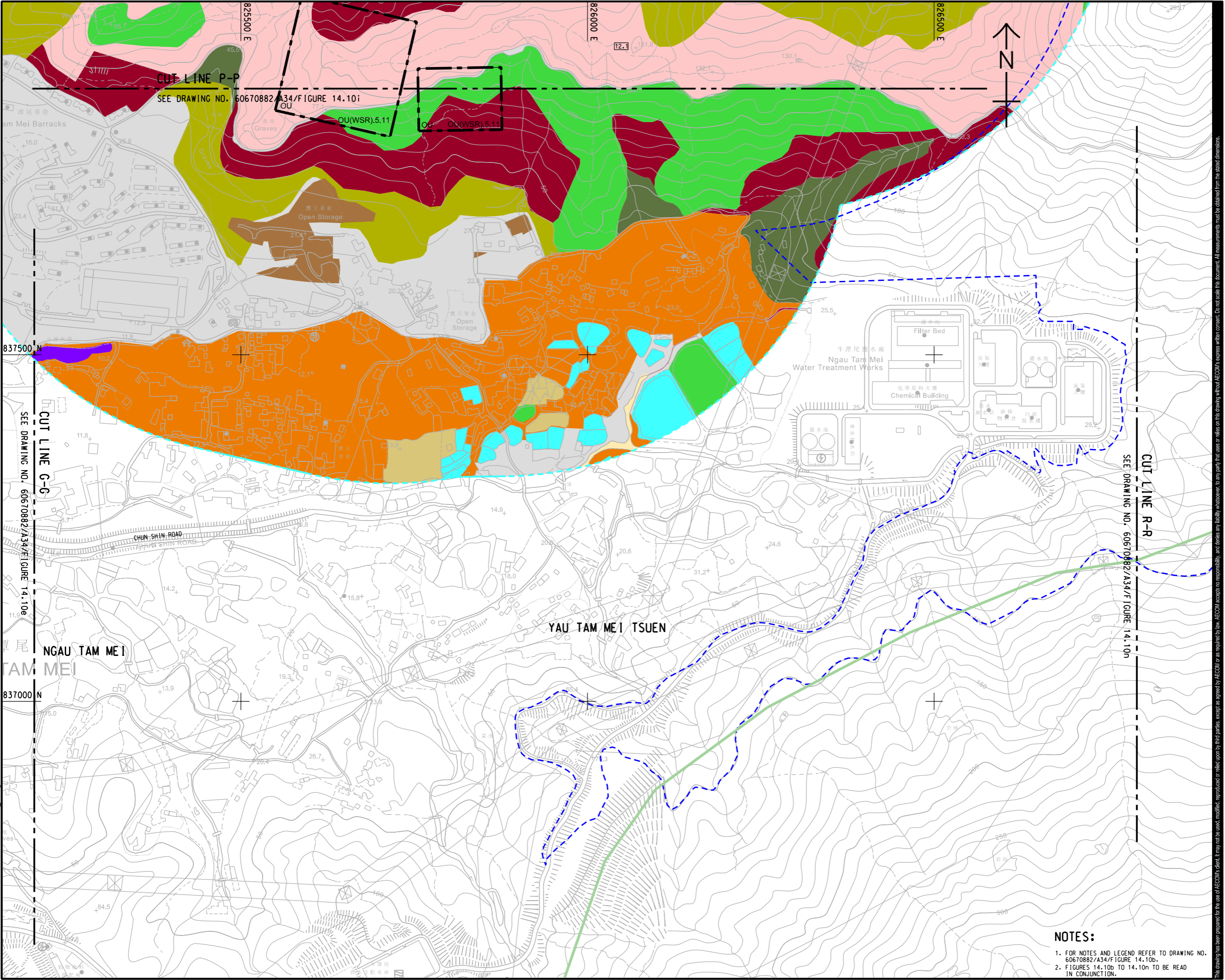
AGREEMENT NO.
 協議編號
 CE 20/2021

SHEET TITLE
 圖紙名稱
 LANDSCAPE RESOURCE IMPACT BLOW UP PLAN

SHEET NUMBER
 圖紙編號
 60670882/A34/FIGURE 14.10i

This drawing has been prepared for the use of AECOM's client. It may not be used, modified, reproduced or relied upon by third parties, except as agreed by AECOM or as required by law. AECOM accepts no responsibility, and denies any liability whatsoever, to any party that uses or relies on this drawing without AECOM's express written consent. Do not scale this document. All measurements must be obtained from the stated dimensions.

ISO A1 594mm x 841mm
 Approved:
 Checked:
 Designer:
 Project Management Initials:
 Plot File by: Wuming.Zeng/2024/12
 PATH: P:\PROJECTS\60670882\DRAWING\REPORT\A34\A34_172.dgn



PROJECT
 項目
FIRST PHASE DEVELOPMENT OF THE NEW TERRITORIES NORTH – SAN TIN / LOK MA CHAU DEVELOPMENT NODE – INVESTIGATION

CLIENT
 業主
 **土木工程拓展署**
 Civil Engineering and Development Department
 **規劃署**
 Planning Department

CONSULTANT
 顧問公司
 AECOM Asia Company Ltd.
 www.aecom.com

SUB-CONSULTANTS
 分判工程師/顧問公司

ISSUE/REVISION
 修訂

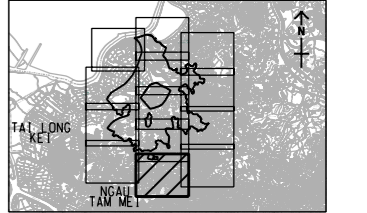
IR	DATE	DESCRIPTION	CHK.

STATUS
 階段

SCALE
 比例
 A3 1 : 5000

DIMENSION UNIT
 尺寸單位
 METRES

KEY PLAN A3 1 : 250000
 索引圖



PROJECT NO.
 項目編號
 60670882

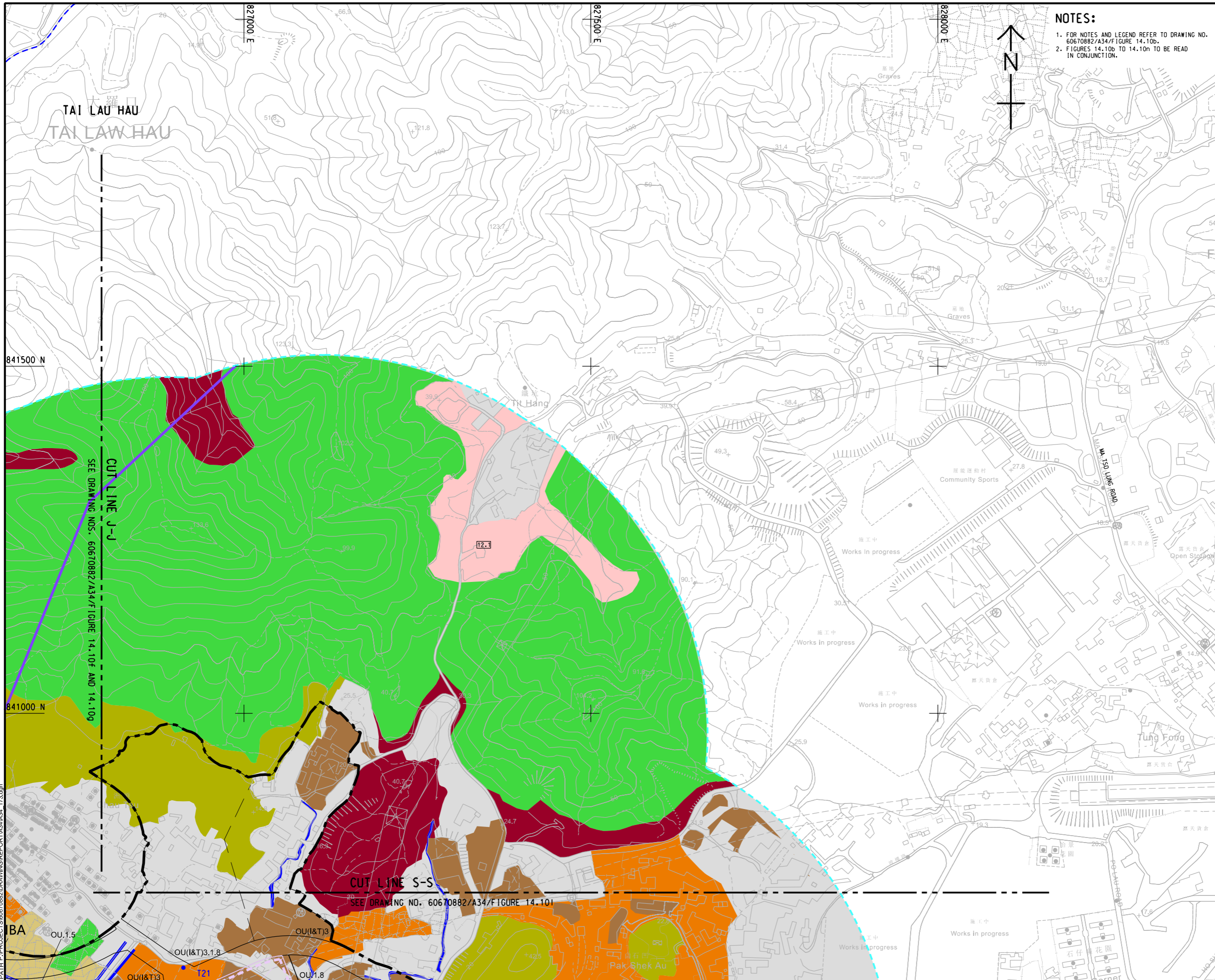
AGREEMENT NO.
 協議編號
 CE 20/2021

SHEET TITLE
 圖紙名稱
 LANDSCAPE RESOURCE IMPACT BLOW UP PLAN

SHEET NUMBER
 圖紙編號
 60670882/A34/FIGURE 14.10j

- NOTES:**
- FOR NOTES AND LEGEND REFER TO DRAWING NO. 60670882/A34/F FIGURE 14.10b.
 - FIGURES 14.10b TO 14.10n TO BE READ IN CONJUNCTION.

This drawing has been prepared for the use of AECOM's client. It may not be used, modified, reproduced or relied upon by third parties, except as agreed by AECOM or as required by law. AECOM accepts no responsibility, and disclaims any liability whatsoever, for any part, that is used or relied on in this drawing without AECOM's express written consent. Do not scale this document. All measurements must be obtained from the stated dimensions.



NOTES:

1. FOR NOTES AND LEGEND REFER TO DRAWING NO. 60670882/A34/FIGURE 14.10b.
2. FIGURES 14.10b TO 14.10n TO BE READ IN CONJUNCTION.



PROJECT

FIRST PHASE DEVELOPMENT OF THE NEW TERRITORIES NORTH - SAN TIN / LOK MA CHAU DEVELOPMENT NODE - INVESTIGATION

CLIENT



CONSULTANT

AECOM Asia Company Ltd.
www.aecom.com

SUB-CONSULTANTS

ISSUE/REVISION

IR	DATE	DESCRIPTION	CHK.
類別	日期	內容摘要	核對

STATUS

階段

SCALE

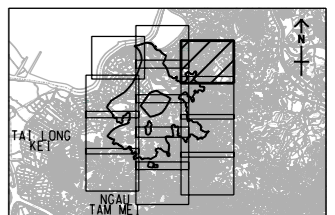
A3 1 : 5000

DIMENSION UNIT

METRES

KEY PLAN

A3 1 : 250000



PROJECT NO.

項目編號
60670882

AGREEMENT NO.

協議編號
CE 20/2021

SHEET TITLE

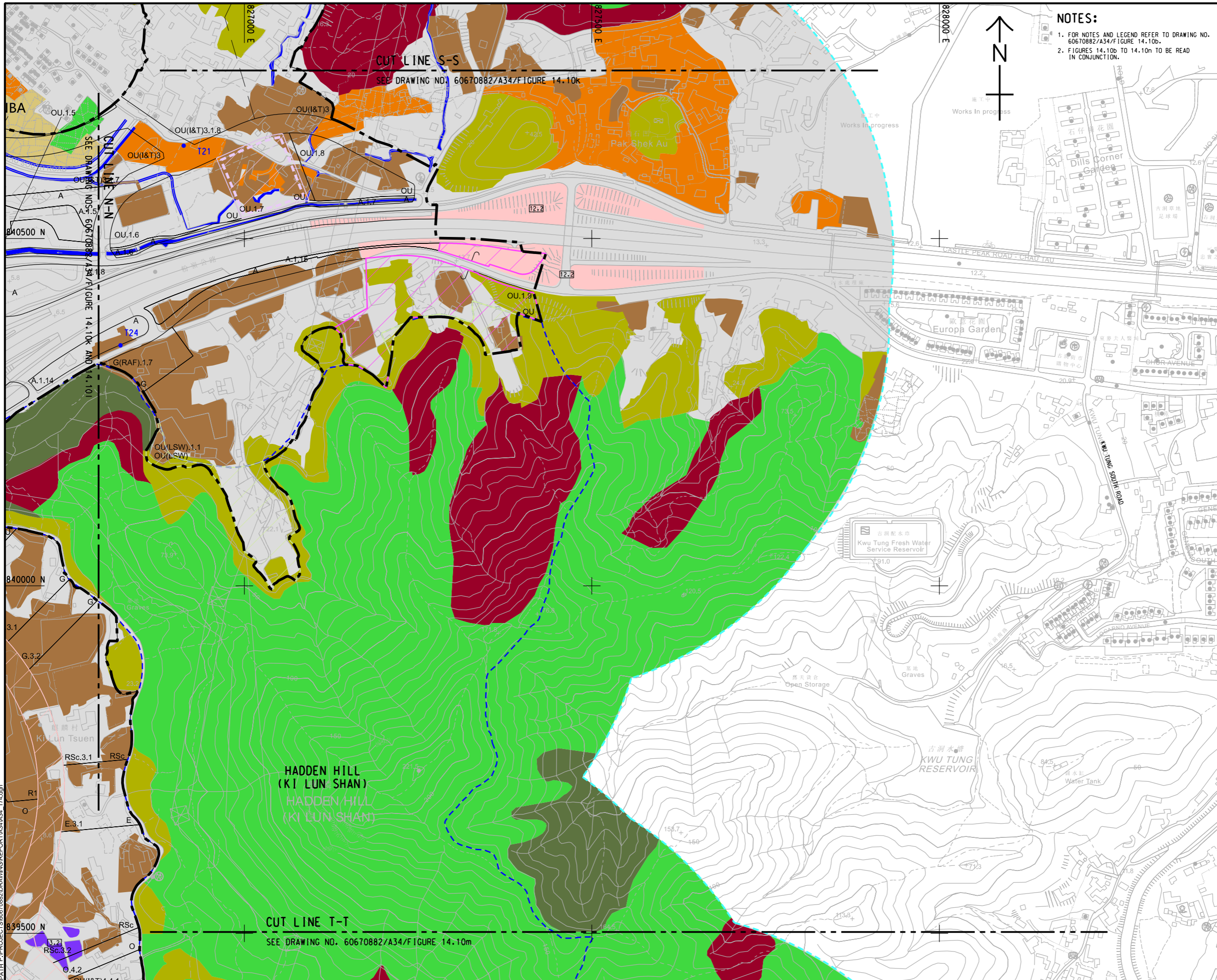
圖紙名稱
LANDSCAPE RESOURCE IMPACT BLOW UP PLAN

SHEET NUMBER

圖紙編號
60670882/A34/FIGURE 14.10k

This drawing has been prepared for the use of AECOM's client. It may not be used, modified, reproduced or relied upon by third parties, except as agreed by AECOM or as required by law. AECOM accepts no responsibility, and disclaims any liability, whatsoever, for any part, that is used or relied on in this drawing without AECOM's express written consent. All measurements must be obtained from the stated dimensions.

ISO A1 594mm x 841mm
 Approved:
 Checked:
 Designer:
 Project Management Initials:
 Plot File by: Liang Y
 PATH: P:\PROJECTS\60670882\DRAWING\REPORT\A3\A34_174.dgn
 2024/1/2



NOTES:
 1. FOR NOTES AND LEGEND REFER TO DRAWING NO. 60670882/A34/FIGURE 14.10b.
 2. FIGURES 14.10b TO 14.10m TO BE READ IN CONJUNCTION.



AECOM

PROJECT
 項目
FIRST PHASE DEVELOPMENT OF THE NEW TERRITORIES NORTH – SAN TIN / LOK MA CHAU DEVELOPMENT NODE – INVESTIGATION

CLIENT
 業主
 **土木工程拓展署**
 Civil Engineering and Development Department
 **規劃署**
 Planning Department

CONSULTANT
 工程顧問公司
 AECOM Asia Company Ltd.
 www.aecom.com

SUB-CONSULTANTS
 分判工程師/顧問公司

ISSUE/REVISION
 修訂

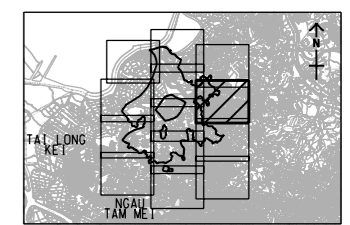
IR	DATE	DESCRIPTION	CHK.

STATUS
 階段

SCALE
 比例
 A3 1 : 5000

DIMENSION UNIT
 尺寸單位
 METRES

KEY PLAN A3 1 : 250000
 索引圖



PROJECT NO.
 項目編號
 60670882

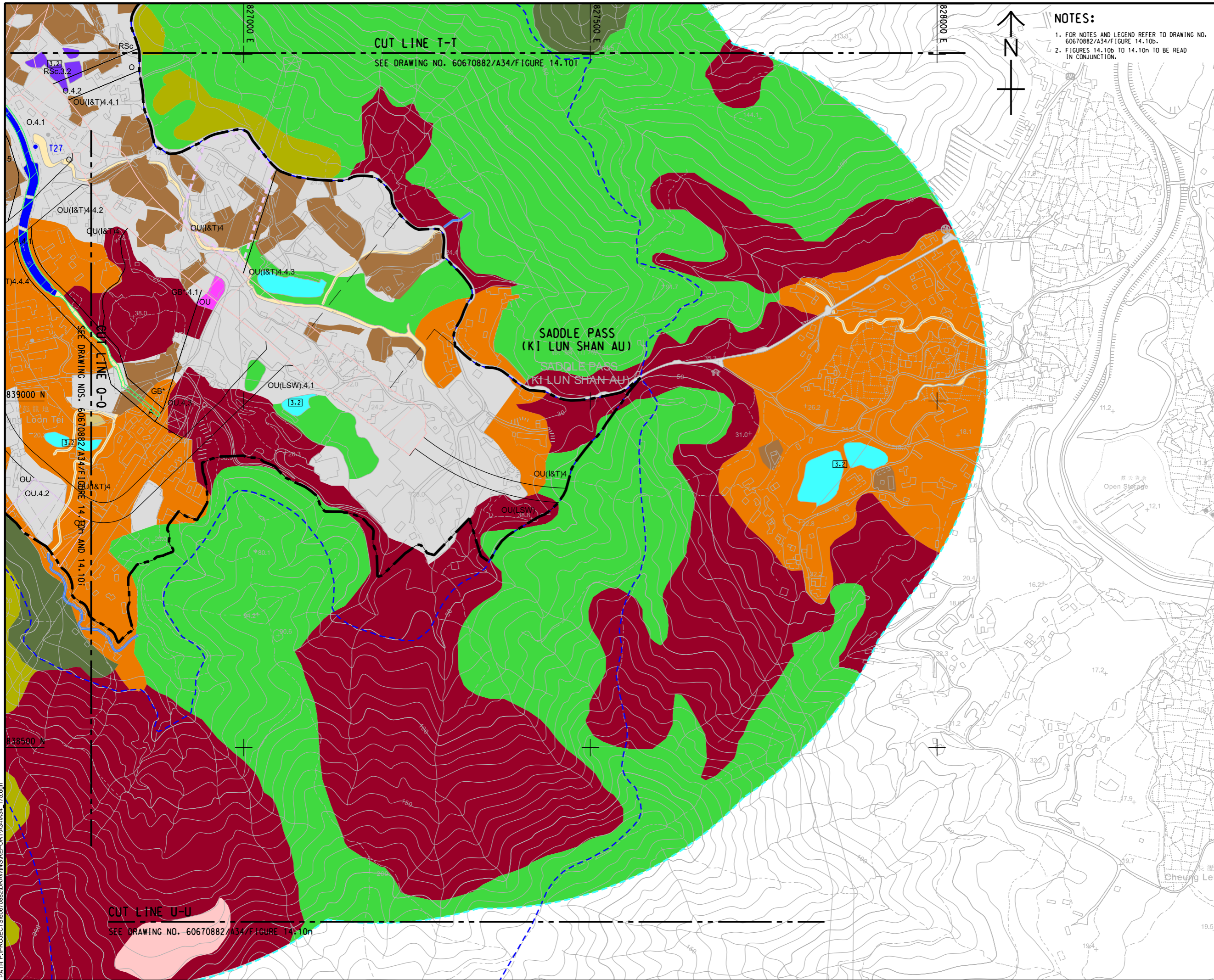
AGREEMENT NO.
 協議編號
 CE 20/2021

SHEET TITLE
 圖紙名稱
LANDSCAPE RESOURCE IMPACT BLOW UP PLAN

SHEET NUMBER
 圖紙編號
 60670882/A34/FIGURE 14.10I

This drawing has been prepared for the use of AECOM's client. It may not be used, modified, reproduced or relied upon by third parties, except as agreed by AECOM or as required by law. AECOM accepts no responsibility, and denies any liability, whatsoever, for any part, that less or relies on this drawing without AECOM's express written consent. Do not scale or measure from this sheet dimensions.

ISO A1 594mm x 841mm
Approved:
Checked:
Designer:
Project Management Initials:
Plot File by: YangJ8
PATH: P:\PROJECTS\60670882\DRAWING\REPORT\A3\A34_175.dgn
11/23/2023



NOTES:
 1. FOR NOTES AND LEGEND REFER TO DRAWING NO. 60670882/A34/Figure 14.10b.
 2. FIGURES 14.10b TO 14.10n TO BE READ IN CONJUNCTION.



PROJECT
 項目
FIRST PHASE DEVELOPMENT OF THE NEW TERRITORIES NORTH – SAN TIN / LOK MA CHAU DEVELOPMENT NODE – INVESTIGATION

CLIENT
 業主
 土木工程拓展署
 Civil Engineering and Development Department
 規劃署
 Planning Department

CONSULTANT
 顧問公司
 AECOM Asia Company Ltd.
 www.aecom.com

SUB-CONSULTANTS
 分判工程師/顧問公司

ISSUE/REVISION
 修訂

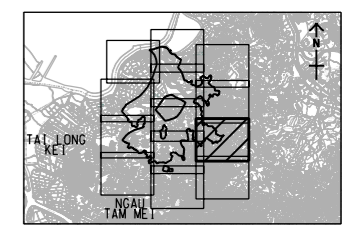
IR	DATE	DESCRIPTION	CHK.

STATUS
 階段

SCALE
 比例
 A3 1 : 5000

DIMENSION UNIT
 尺寸單位
 METRES

KEY PLAN A3 1 : 250000
 索引圖



PROJECT NO.
 項目編號
 60670882

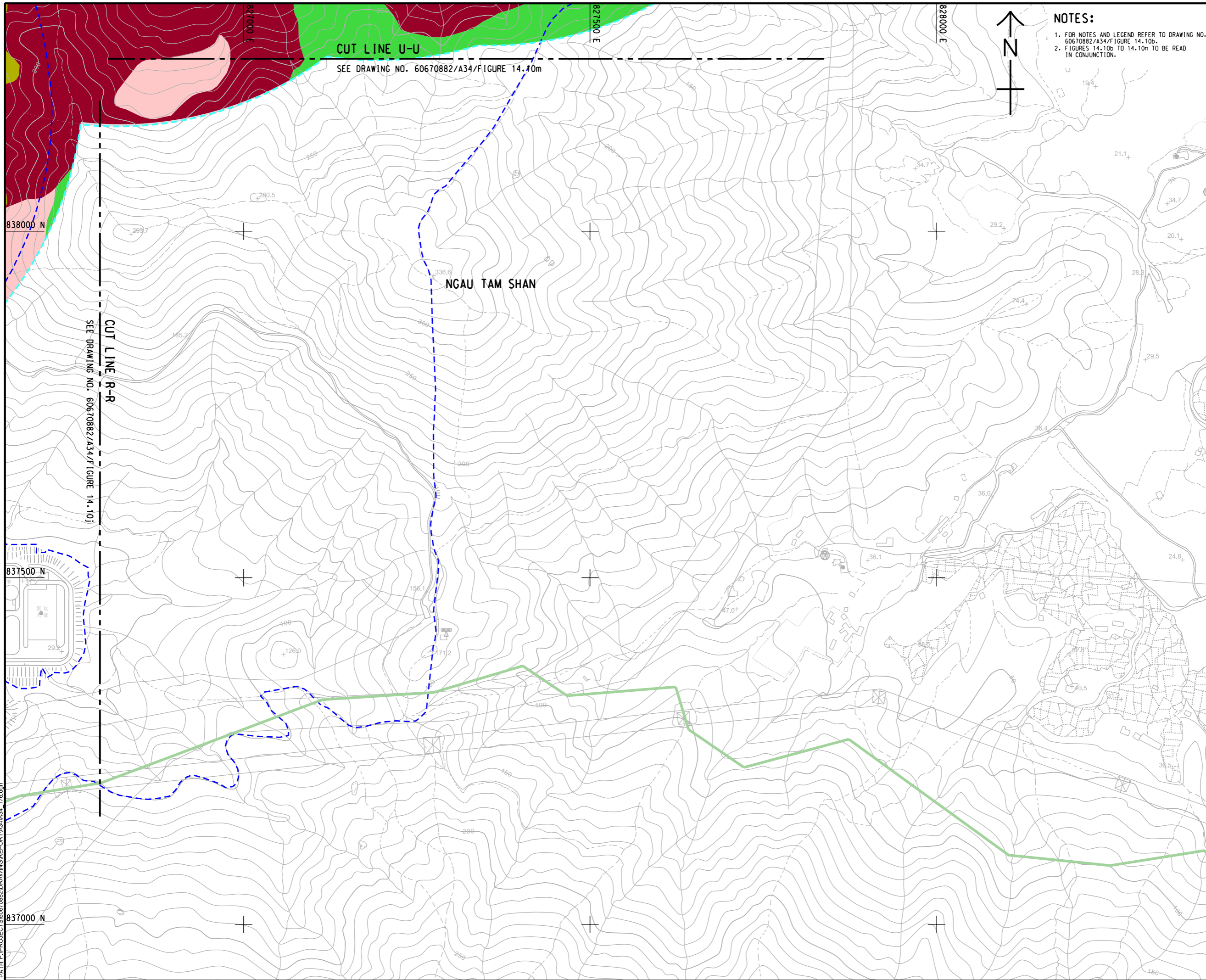
AGREEMENT NO.
 協議編號
 CE 20/2021

SHEET TITLE
 圖紙名稱
 LANDSCAPE RESOURCE IMPACT BLOW UP PLAN

SHEET NUMBER
 圖紙編號
 60670882/A34/FIGURE 14.10m

This drawing has been prepared for the use of AECOM's client. It may not be used, modified, reproduced or relied upon by third parties, except as agreed by AECOM or as required by law. AECOM accepts no responsibility, and denies any liability whatsoever, for any part, that less or more on this drawing without AECOM's express written consent. All measurements must be obtained from the stated dimensions.

ISO A1 594mm x 841mm
 Approved:
 Checked:
 Designer:
 Project Management Initials:
 2024/1/2
 P:\PROJECTS\60670882\DRAWING\REPORT\A34\A34_176.dgn
 Plot File by: Liang Y



NOTES:
 1. FOR NOTES AND LEGEND REFER TO DRAWING NO. 60670882/A34/FIGURE 14.10b.
 2. FIGURES 14.10b TO 14.10n TO BE READ IN CONJUNCTION.

CUT LINE U-U
 SEE DRAWING NO. 60670882/A34/FIGURE 14.10m

CUT LINE R-R
 SEE DRAWING NO. 60670882/A34/FIGURE 14.10j

NGAU TAM SHAN



PROJECT
 項目
FIRST PHASE DEVELOPMENT OF THE NEW TERRITORIES NORTH – SAN TIN / LOK MA CHAU DEVELOPMENT NODE – INVESTIGATION

CLIENT
 業主
 **土木工程拓展署**
 Civil Engineering and Development Department
 **規劃署**
 Planning Department

CONSULTANT
 工程顧問公司
 AECOM Asia Company Ltd.
 www.aecom.com

SUB-CONSULTANTS
 分判工程師有限公司

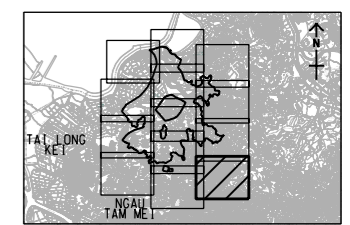
ISSUE/REVISION
 修訂

IR	DATE	DESCRIPTION	CHK.
修訂	日期	內容描述	核對

STATUS
 階段

SCALE
 比例
 A3 1 : 5000
DIMENSION UNIT
 尺寸單位
 METRES

KEY PLAN A3 1 : 250000
 索引圖



PROJECT NO.
 項目編號
 60670882
AGREEMENT NO.
 協議編號
 CE 20/2021

SHEET TITLE
 圖紙名稱
LANDSCAPE RESOURCE IMPACT BLOW UP PLAN

SHEET NUMBER
 圖紙編號
 60670882/A34/FIGURE 14.10n

This drawing has been prepared for the use of AECOM's client. It may not be used, modified, reproduced or relied upon by third parties, except as agreed by AECOM or as required by law. AECOM accepts no responsibility, and denies any liability whatsoever, for any part, that less or relies on this drawing without AECOM's express written consent. Do not scale this document. All measurements must be obtained from the stated dimensions.