


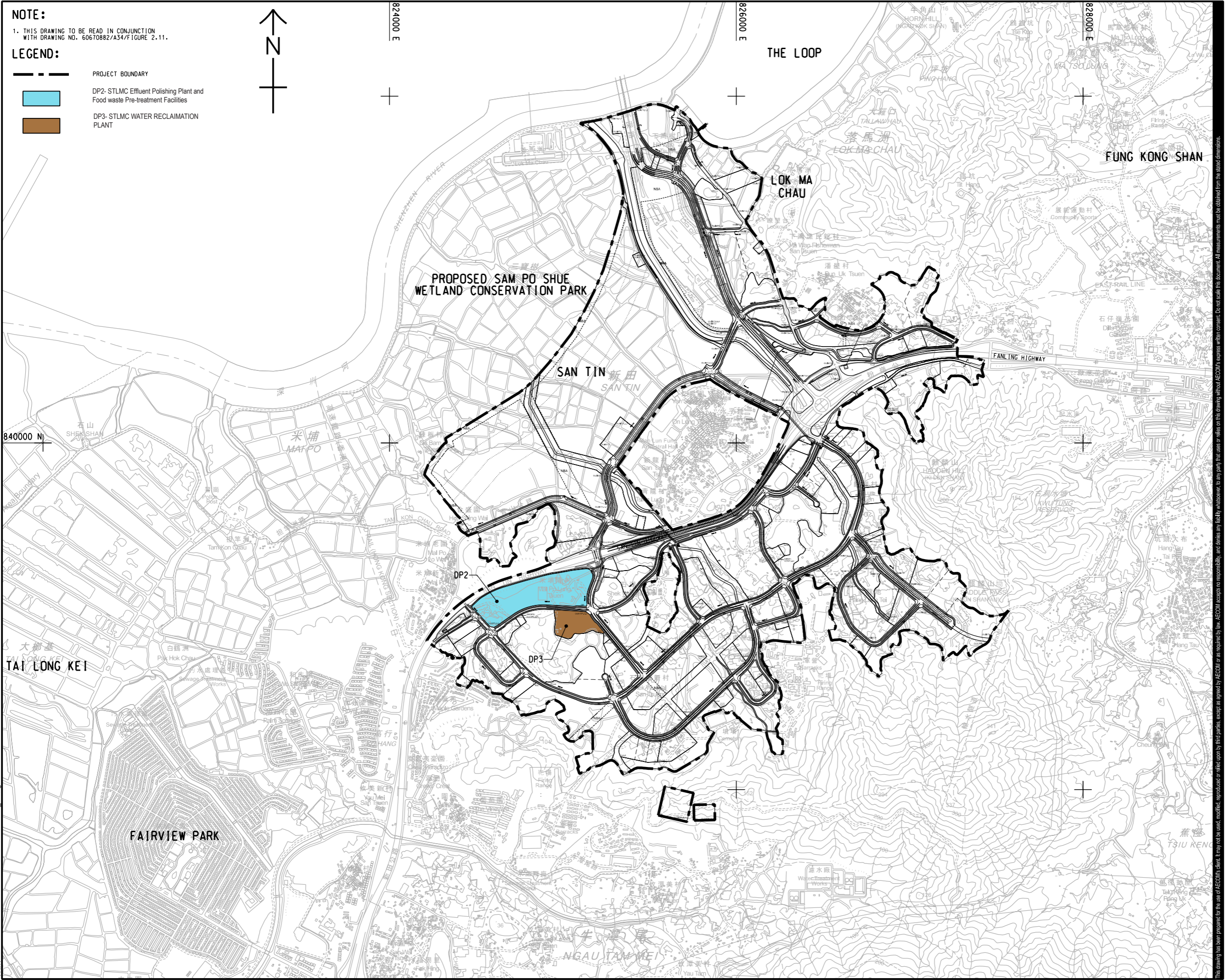


ISO A1 594mm x 841mm
Approved:
Checked:
Designer:
Project Management Initials:

NOTE:
1. THIS DRAWING TO BE READ IN CONJUNCTION WITH DRAWING NO. 60670882/A34/FIGURE 2.11.

- LEGEND:**
-  PROJECT BOUNDARY
 -  DP2- STLMC Effluent Polishing Plant and Food waste Pre-treatment Facilities
 -  DP3- STLMC WATER RECLAMATION PLANT



AECOM

PROJECT
項目
FIRST PHASE DEVELOPMENT OF THE NEW TERRITORIES NORTH – SAN TIN / LOK MA CHAU DEVELOPMENT NODE – INVESTIGATION

CLIENT
業主
 土木工程拓展署
Civil Engineering and Development Department
 規劃署
Planning Department

CONSULTANT
工程顧問公司
AECOM Asia Company Ltd.
www.aecom.com

SUB-CONSULTANTS
分包工程顧問公司

ISSUE/REVISION
修訂

I/R	DATE	DESCRIPTION	CHK.
修訂	日期	內容描述	核對

STATUS
階段

SCALE
比例
A3 1 : 20000

DIMENSION UNIT
尺寸單位
METRES

KEY PLAN
索引圖

PROJECT NO.
項目編號
60670882

AGREEMENT NO.
協議編號
CE 20/2021

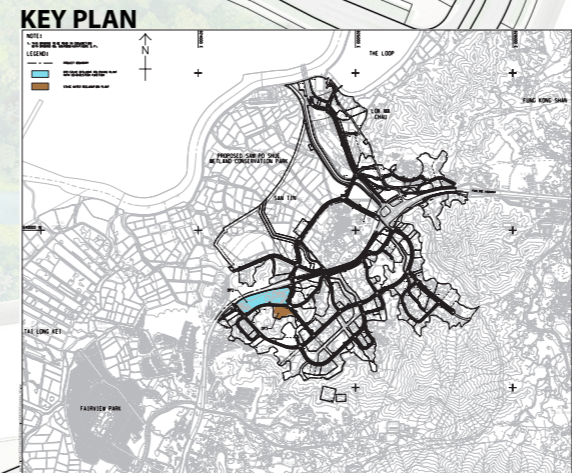
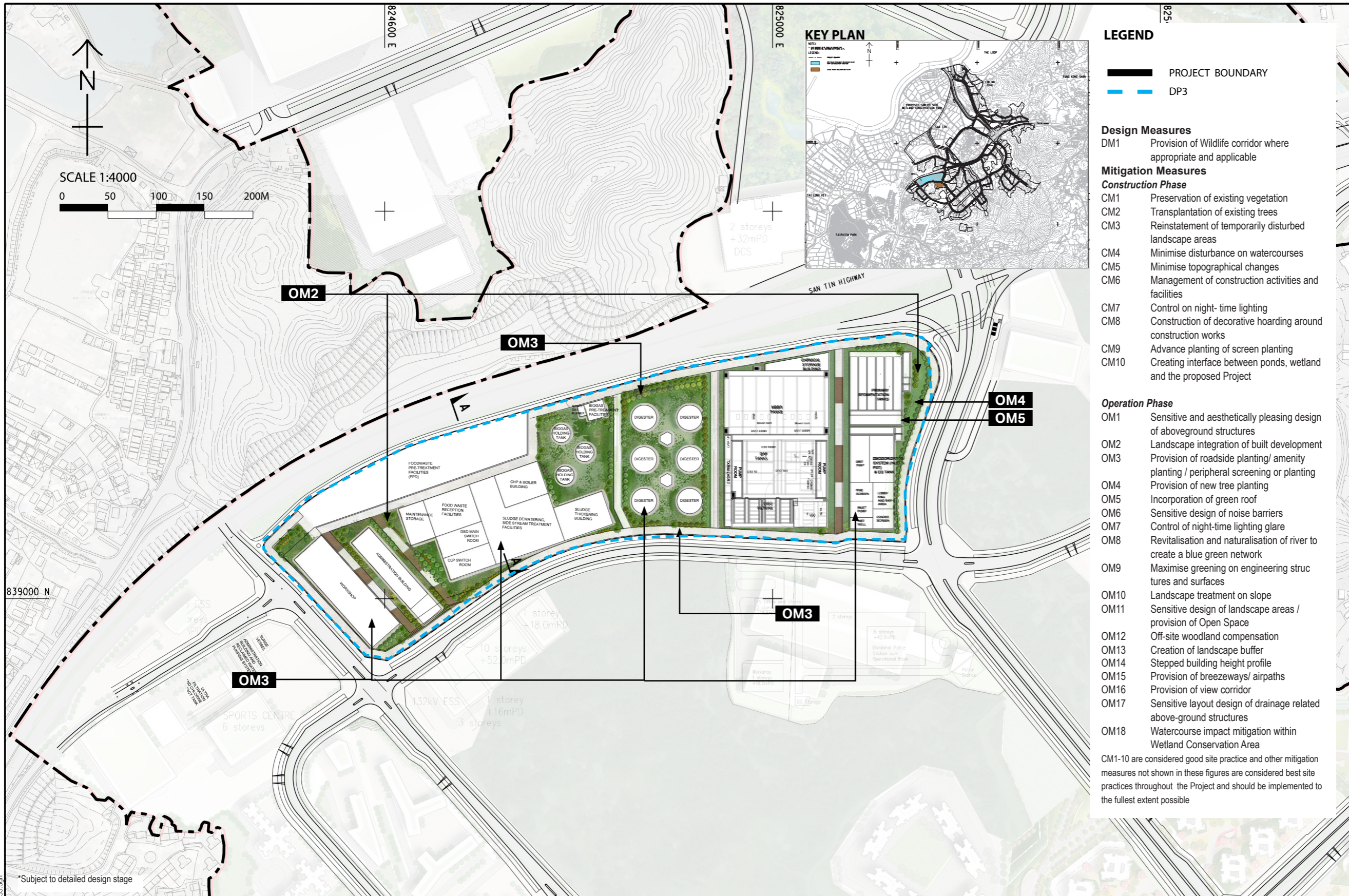
SHEET TITLE
圖紙名稱
MITIGATION MEASURES FOR DP2 AND DP3 KEY PLAN

SHEET NUMBER
圖紙編號
60670882/A34/ Figure 14.17.18

This drawing has been prepared for the use of AECOM's client. It may not be used, modified, reproduced or relied upon by third parties, except as agreed by AECOM or as required by law. AECOM accepts no responsibility, and disclaims any liability, whatsoever, for any party, that uses or relies on this drawing without AECOM's express written consent. Do not scale this document. All measurements must be obtained from the stated dimensions.

Plot File by: YangRO 10/26/2023
PATH: P:\PROJECTS\60670882\DRAWING\REPORT\A34\A34_395.dgn

ISO A1 594mm x 841mm
 Approved:
 Checked:
 Designer:
 Project Management Initials:
 2023/01/14
 PATH PROJECTS/60670882/DRAWING/REPORT/A34/A34_353.dwg



- LEGEND**
- PROJECT BOUNDARY
 - DP3

- Design Measures**
- DM1 Provision of Wildlife corridor where appropriate and applicable
- Mitigation Measures**
- Construction Phase**
- CM1 Preservation of existing vegetation
 - CM2 Transplantation of existing trees
 - CM3 Reinstatement of temporarily disturbed landscape areas
 - CM4 Minimise disturbance on watercourses
 - CM5 Minimise topographical changes
 - CM6 Management of construction activities and facilities
 - CM7 Control on night-time lighting
 - CM8 Construction of decorative hoarding around construction works
 - CM9 Advance planting of screen planting
 - CM10 Creating interface between ponds, wetland and the proposed Project
- Operation Phase**
- OM1 Sensitive and aesthetically pleasing design of aboveground structures
 - OM2 Landscape integration of built development
 - OM3 Provision of roadside planting/ amenity planting / peripheral screening or planting
 - OM4 Provision of new tree planting
 - OM5 Incorporation of green roof
 - OM6 Sensitive design of noise barriers
 - OM7 Control of night-time lighting glare
 - OM8 Revitalisation and naturalisation of river to create a blue green network
 - OM9 Maximise greening on engineering structures and surfaces
 - OM10 Landscape treatment on slope
 - OM11 Sensitive design of landscape areas / provision of Open Space
 - OM12 Off-site woodland compensation
 - OM13 Creation of landscape buffer
 - OM14 Stepped building height profile
 - OM15 Provision of breezeways/ airpaths
 - OM16 Provision of view corridor
 - OM17 Sensitive layout design of drainage related above-ground structures
 - OM18 Watercourse impact mitigation within Wetland Conservation Area
- CM1-10 are considered good site practice and other mitigation measures not shown in these figures are considered best site practices throughout the Project and should be implemented to the fullest extent possible

AECOM

PROJECT
 FIRST PHASE DEVELOPMENT OF THE NEW TERRITORIES NORTH – SAN TIN / LOK MA CHAU DEVELOPMENT NODE – INVESTIGATION

CLIENT
 土木工程拓展署
 Civil Engineering and Development Department
 規劃署
 Planning Department

CONSULTANT
 AECOM Asia Company Ltd.
 www.aecom.com

SUB-CONSULTANTS

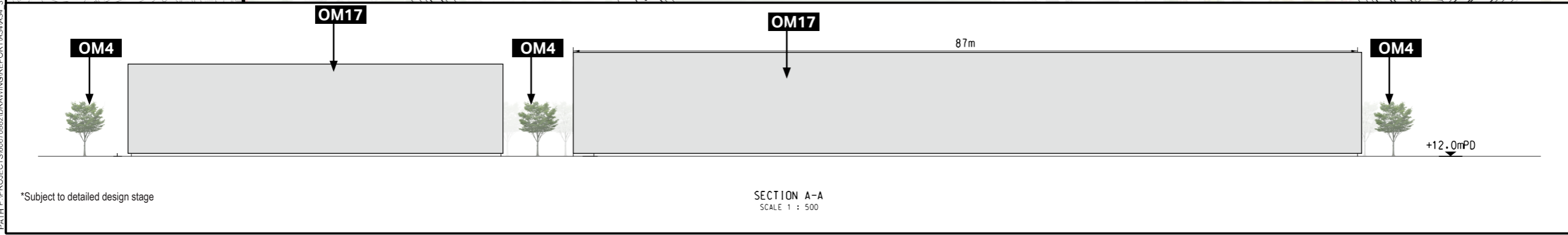
ISSUE/REVISION

NO.	DATE	DESCRIPTION	CHK.

STATUS

SCALE: A3:1:4000 DIMENSION UNIT: METRES

KEY PLAN



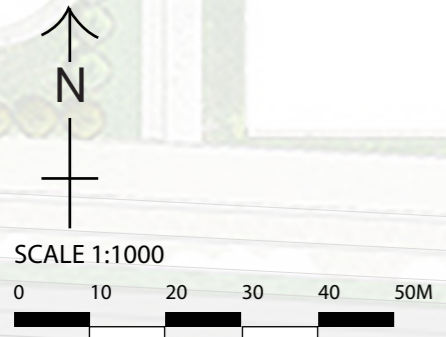
PROJECT NO. 60670882 AGREEMENT NO. CE 20/2021

SHEET TITLE
 Mitigation Measures for DP 2- New effluent polishing plant with co-digestion function (EPP)

SHEET NUMBER
 60670882/A34/ Figure 14.17.19

This drawing has been prepared for the use of AECOM's client. It may not be used, modified, reproduced or relied upon by third parties, except as agreed by AECOM or as required by law. AECOM accepts no responsibility, and disclaims any liability whatsoever, for any party that uses or relies on this drawing without AECOM's express written consent. All measurements must be obtained from the stated dimensions.

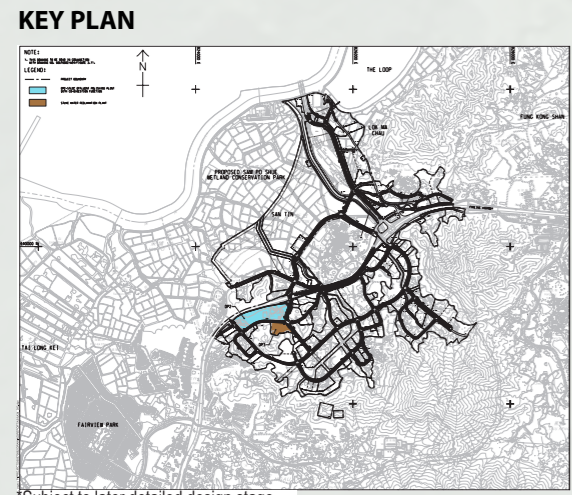
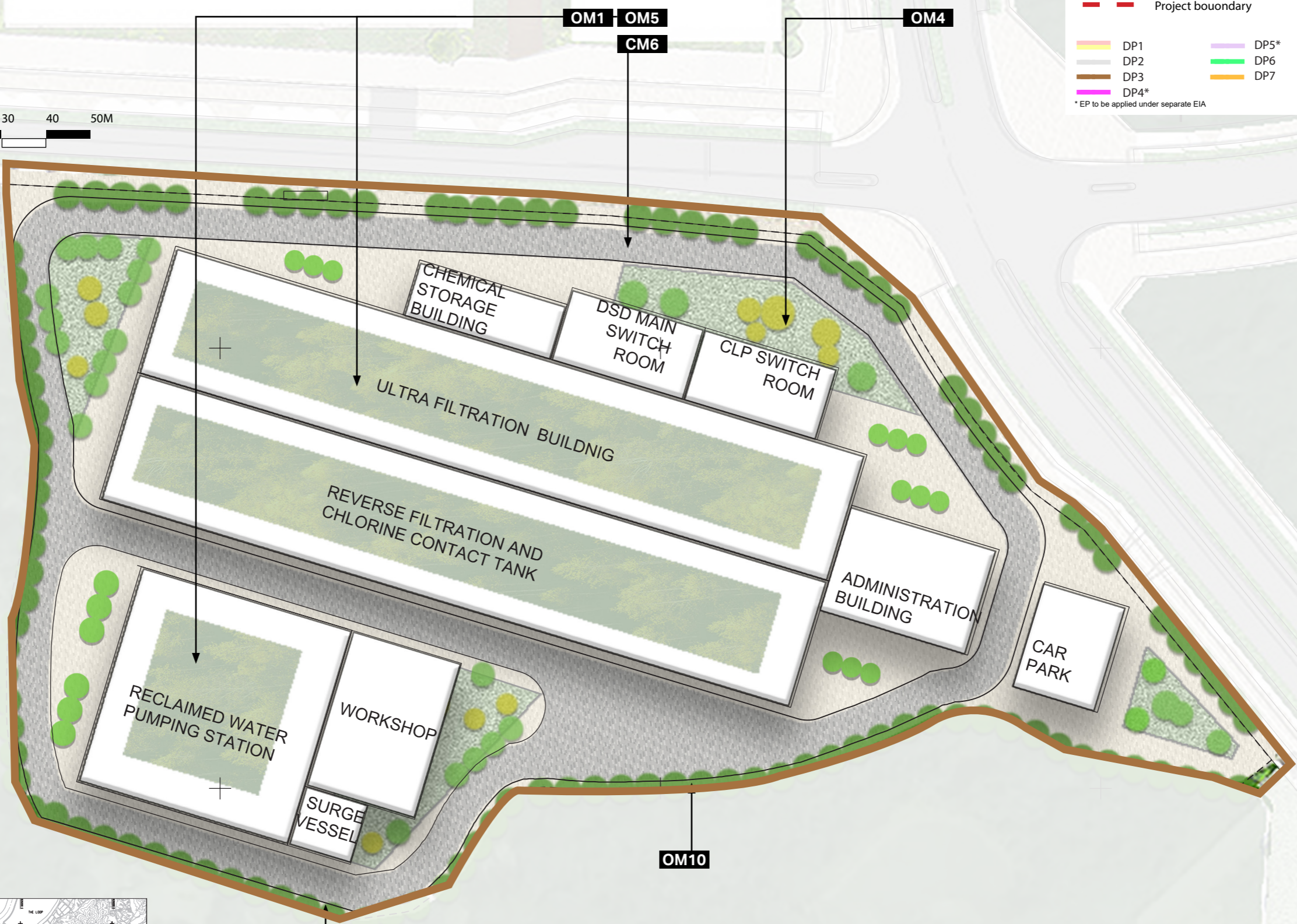
ISO A3 297mm x 420mm
Approved:
Checked:
Designer:
Project Management Initials:
Plot File by: \$USERS
PATH \$FILES
DATES \$DATES



LEGEND

- Project boundary
- DP1
- DP2
- DP3
- DP4*
- DP5*
- DP6
- DP7

* EP to be applied under separate EIA



- Mitigation Measures**
- CM1- Preservation of existing vegetation
 - CM2- Transplantation of existing trees
 - CM3- Reinstatement of temporarily disturbed landscape areas
 - CM4- Minimise disturbance on watercourses
 - CM5- Minimise topographical changes
 - CM6- Management of construction activities and facilities
 - CM7- Control on night-time lighting
 - CM8- Construction of decorative hoarding around construction works
 - CM9- Advance planting of screen planting
 - CM10- Creating interface between ponds, wetland and the proposed Project
 - OM1- Sensitive and aesthetically pleasing design of aboveground structures
 - OM2- Landscape integration of built development
 - OM3- Provision of roadside planting/ amenity planting / peripheral screening or planting
 - OM4- Provision of new tree planting
 - OM5- Incorporation of green roof
 - OM6- Sensitive design of noise barriers
 - OM7- Control of night-time lighting glare
 - OM8- Revitalisation and naturalisation of river to create a blue green network
 - OM9- Maximise greening on engineering structures and surfaces
 - OM10- Landscape treatment on slope
 - OM11- Sensitive design of landscape areas / provision of Open Space
 - OM12 - Off-site woodland compensation
 - OM13- Creation of landscape buffer
 - OM14- Stepped building height profile
 - OM15- Provision of breezeway/ airpaths
 - OM16- Provision of view corridor
 - OM17- Sensitive layout design of drainage related above-ground structures
 - OM18- Watercourse impact mitigation within Wetland Conservation Area
- Design Measures**
- DM1- Provision of wildlife corridor where appropriate and applicable
- CM1-10 are considered good site practice and other mitigation measures not shown in these figures are considered best site practices throughout the Project and should be implemented to the fullest extent possible.

AECOM

PROJECT
項目
FIRST PHASE DEVELOPMENT OF THE NEW TERRITORIES NORTH – SAN TIN / LOK MA CHAU DEVELOPMENT NODE – INVESTIGATION

CLIENT
業主
CEDD 土木工程拓展署
Civil Engineering and Development Department
規劃署 Planning Department

CONSULTANT
顧問公司
AECOM Asia Company Ltd.
www.aecom.com

SUB-CONSULTANTS
分判工程師/顧問公司

ISSUE/REVISION
修訂

I/R	DATE	DESCRIPTION	CHK.

STATUS
階段

SCALE 比例
A3 1:1000

DIMENSION UNIT 尺寸單位
METRES

DATE 日期
NOV 2022

KEY PLAN
索引圖

PROJECT NO. 項目編號
60670882

AGREEMENT NO. 協議編號
CE 20/2021

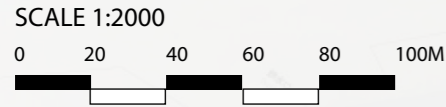
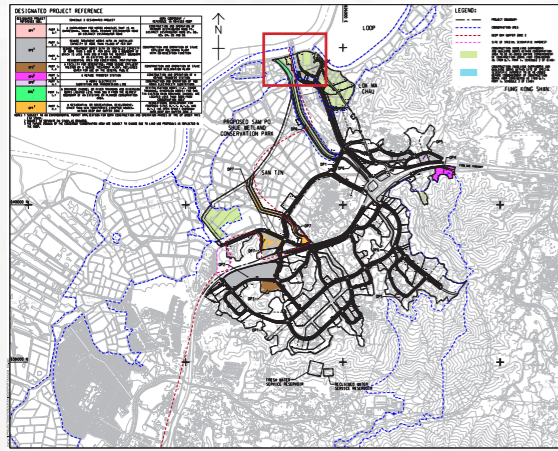
SHEET TITLE 圖紙名稱
Mitigation Measures for DP 3 - New reclaimed water facility

SHEET NUMBER 圖紙編號
60670882/A34/ Figure 14.17.20

This drawing has been prepared for the use of AECOM's client. It may not be used, modified, reproduced or relied upon by third parties, except as agreed by AECOM or as required by law. AECOM accepts no responsibility, and denies any liability whatsoever, to any party that uses or relies on this drawing without AECOM's express written consent. Do not scale this document. All measurements must be obtained from the stated dimensions.

ISO A3 297mm x 420mm
Approved:
Checked:
Designer:
Project Management Initials:
SDATES
\$USERS
\$PATH
\$FILES

KEY PLAN



CM10 OM11 OM13

CM7 OM11

OM4 OM11

OM8 OM9

OM10 OM18

OM8 OM18

CM5 OM11 OM13

- Project boundary
 - DP1
 - DP2
 - DP3
 - DP4*
 - DP5*
 - DP6
 - DP7
- * EP to be applied under separate EIA

Design Measures

DM1 Provision of Wildlife corridor where appropriate and applicable

Mitigation Measures

Construction Phase

- CM1 Preservation of existing vegetation
- CM2 Transplantation of existing trees
- CM3 Reinstatement of temporarily disturbed landscape areas
- CM4 Minimise disturbance on watercourses
- CM5 Minimise topographical changes
- CM6 Management of construction activities and facilities
- CM7 Control on night- time lighting
- CM8 Construction of decorative hoarding around construction works
- CM9 Advance planting of screen planting
- CM10 Creating interface between ponds, wetland and the proposed Project

Operation Phase

- OM1 Sensitive and aesthetically pleasing design of aboveground structures
- OM2 Landscape integration of built development
- OM3 Provision of roadside planting/ amenity planting / peripheral screening or planting
- OM4 Provision of new tree planting
- OM5 Incorporation of green roof
- OM6 Sensitive design of noise barriers
- OM7 Control of night-time lighting glare
- OM8 Revitalisation and naturalisation of river to create a blue green network
- OM9 Maximise greening on engineering structures and surfaces
- OM10 Landscape treatment on slope
- OM11 Sensitive design of landscape areas / provision of Open Space
- OM12 Off-site woodland compensation
- OM13 Creation of landscape buffer
- OM14 Stepped building height profile
- OM15 Provision of breezeways/ airpaths
- OM16 Provision of view corridor
- OM17 Sensitive layout design of drainage related above-ground structures
- OM18 Watercourse impact mitigation within Wetland Conservation Area

CM1-10 are considered good site practice and other mitigation measures not shown in these figures are considered best site practices throughout the Project and should be implemented to the fullest extent possible



PROJECT
項目
FIRST PHASE DEVELOPMENT OF THE NEW TERRITORIES NORTH – SAN TIN / LOK MA CHAU DEVELOPMENT NODE – INVESTIGATION

CLIENT
業主
CEDD 土木工程拓展署
Civil Engineering and Development Department
規劃署
Planning Department

CONSULTANT
顧問公司
AECOM Asia Company Ltd.
www.aecom.com

SUB-CONSULTANTS
分判工程師/顧問公司

ISSUE/REVISION

I/R	DATE	DESCRIPTION	CHK.
修訂	日期	內容摘要	核核

STATUS

圖則

SCALE 比例尺: 2000
DIMENSION UNIT 尺寸單位: METRES

DATE 日期

NOV 2022

KEY PLAN

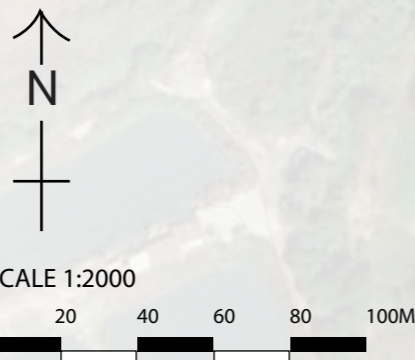
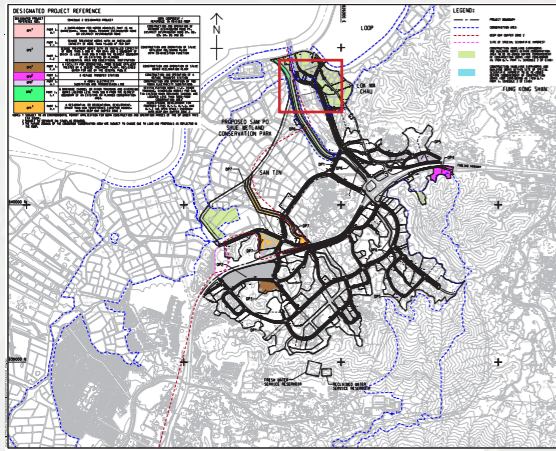
索引圖

PROJECT NO. 項目編號: 60670882
AGREEMENT NO. 協議編號: CE 20/2021

SHEET TITLE 圖則名稱: Mitigation Measures for DP 6

SHEET NUMBER 圖則號碼: 60670882/A34/ Figure 14.17.21

This drawing has been prepared for the use of AECOM's client. It may not be used, modified, reproduced or relied upon by third parties, except as agreed by AECOM. AECOM accepts no responsibility, and denies any liability whatsoever, to any party that uses or relies on this drawing without AECOM's express written consent. Do not scale this document. All measurements must be obtained from the stated dimensions.



- LEGEND**
- - - Project boundary
 - DP1
 - DP2
 - DP3
 - DP4*
 - DP5*
 - DP6
 - DP7
- * EP to be applied under separate EIA

Design Measures

DM1 Provision of Wildlife corridor where appropriate and applicable

Mitigation Measures

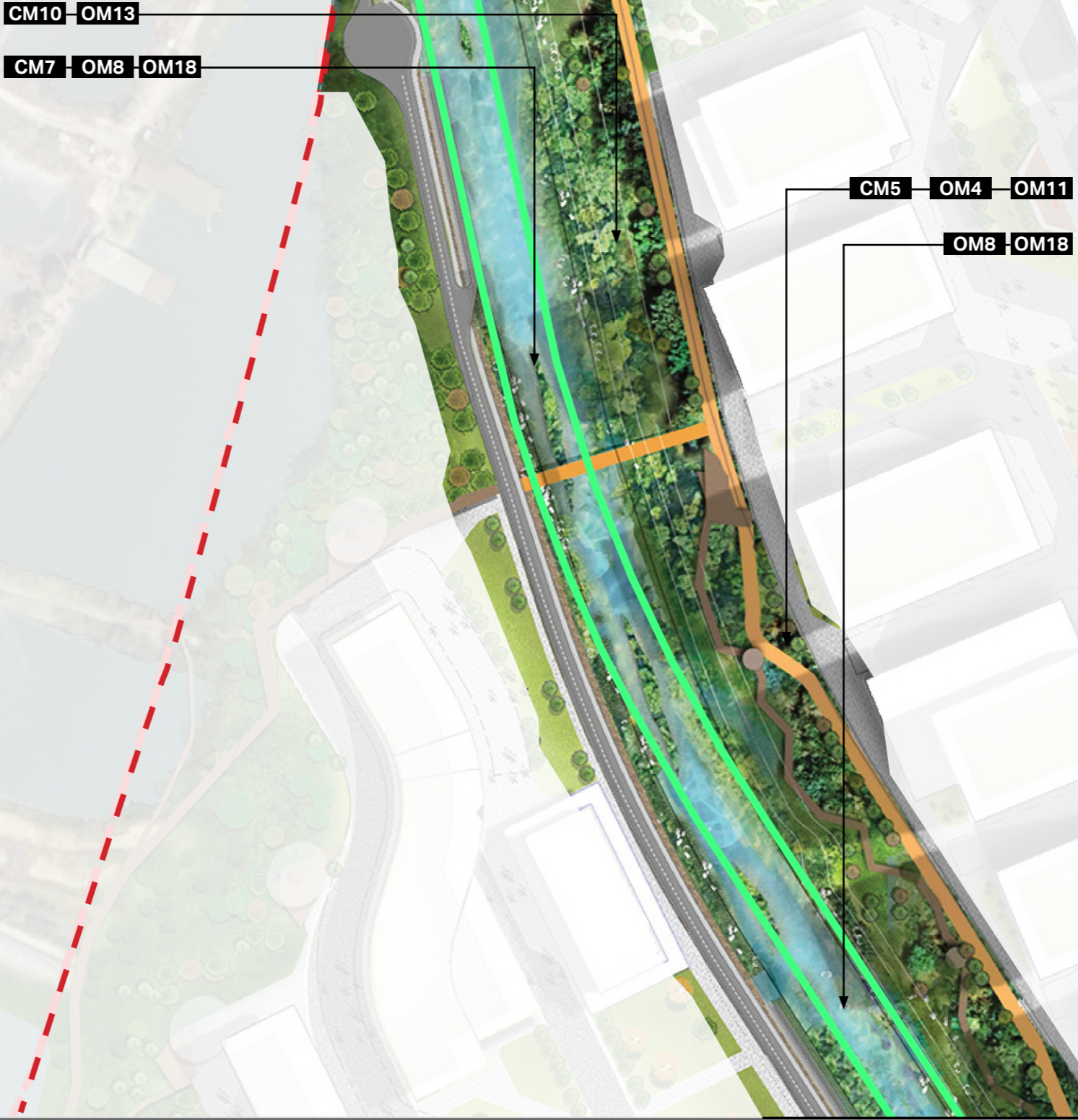
Construction Phase

- CM1 Preservation of existing vegetation
- CM2 Transplantation of existing trees
- CM3 Reinstatement of temporarily disturbed landscape areas
- CM4 Minimise disturbance on watercourses
- CM5 Minimise topographical changes
- CM6 Management of construction activities and facilities
- CM7 Control on night-time lighting
- CM8 Construction of decorative hoarding around construction works
- CM9 Advance planting of screen planting
- CM10 Creating interface between ponds, wetland and the proposed Project

Operation Phase

- OM1 Sensitive and aesthetically pleasing design of aboveground structures
- OM2 Landscape integration of built development
- OM3 Provision of roadside planting/ amenity planting / peripheral screening or planting
- OM4 Provision of new tree planting
- OM5 Incorporation of green roof
- OM6 Sensitive design of noise barriers
- OM7 Control of night-time lighting glare
- OM8 Revitalisation and naturalisation of river to create a blue green network
- OM9 Maximise greening on engineering structures and surfaces
- OM10 Landscape treatment on slope
- OM11 Sensitive design of landscape areas / provision of Open Space
- OM12 Off-site woodland compensation
- OM13 Creation of landscape buffer
- OM14 Stepped building height profile
- OM15 Provision of breezeways/ airpaths
- OM16 Provision of view corridor
- OM17 Sensitive layout design of drainage related above-ground structures
- OM18 Watercourse impact mitigation within Wetland Conservation Area

CM1-10 are considered good site practice and other mitigation measures not shown in these figures are considered best site practices throughout the Project and should be implemented to the fullest extent possible



PROJECT
 項目
 FIRST PHASE DEVELOPMENT OF THE NEW TERRITORIES NORTH – SAN TIN / LOK MA CHAU DEVELOPMENT NODE – INVESTIGATION

CLIENT
 業主
 土木工程拓展署
 Civil Engineering and Development Department
 規劃署
 Planning Department

CONSULTANT
 顧問公司
 AECOM Asia Company Ltd.
 www.aecom.com

SUB-CONSULTANTS
 分判工程顧問公司

ISSUE/REVISION
 修訂

I/R	DATE	DESCRIPTION	CHK.
修訂	日期	內容摘要	核核

STATUS
 階段

SCALE
 比例
 A3 1:2000

DIMENSION UNIT
 尺寸單位
 METRES

DATE
 日期
 NOV 2022

KEY PLAN
 索引圖

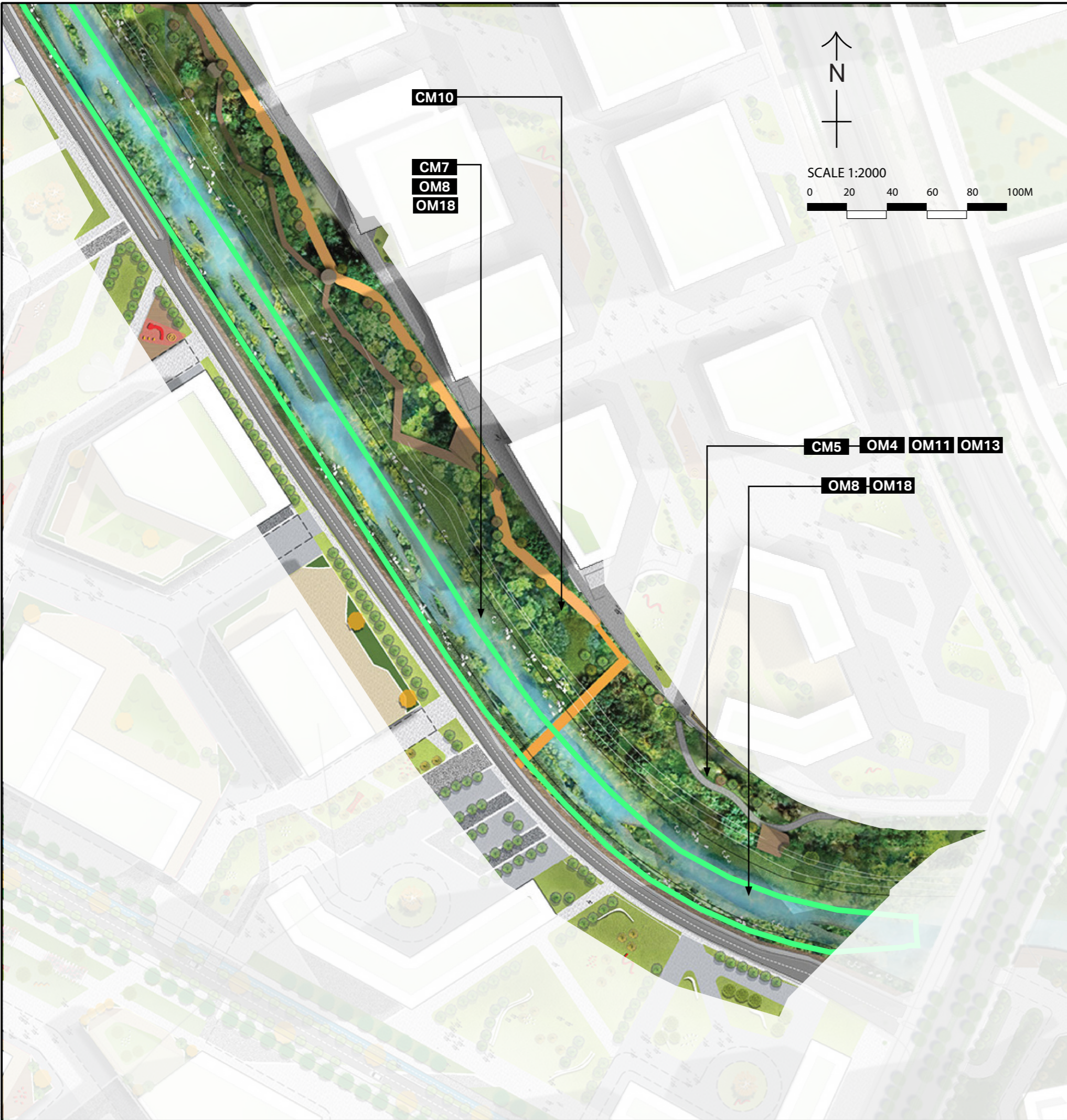
PROJECT NO.
 項目編號
 60670882

AGREEMENT NO.
 協議編號
 CE 20/2021

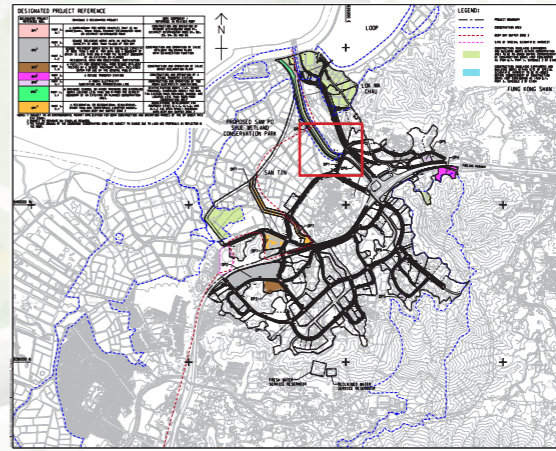
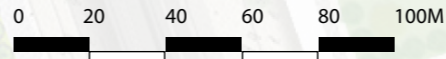
SHEET TITLE
 圖紙名稱
 Mitigation Measures for DP 6

SHEET NUMBER
 圖紙編號
 60670882/A34/ Figure 14.17.22

This drawing has been prepared for the use of AECOM's client. It may not be used, modified, reproduced or relied upon by third parties, except as agreed by AECOM or as required by law. AECOM accepts no responsibility, and denies any liability whatsoever, to any party that uses or relies on this drawing without AECOM's express written consent. Do not scale this document. All measurements must be obtained from the stated dimensions.



SCALE 1:2000



LEGEND

- Project boundary
 - DP1
 - DP2
 - DP3
 - DP4*
 - DP5*
 - DP6
 - DP7
- * EP to be applied under separate EIA

Design Measures

DM1 Provision of Wildlife corridor where appropriate and applicable

Mitigation Measures

Construction Phase

- CM1 Preservation of existing vegetation
- CM2 Transplantation of existing trees
- CM3 Reinstatement of temporarily disturbed landscape areas
- CM4 Minimise disturbance on watercourses
- CM5 Minimise topographical changes
- CM6 Management of construction activities and facilities
- CM7 Control on night- time lighting
- CM8 Construction of decorative hoarding around construction works
- CM9 Advance planting of screen planting
- CM10 Creating interface between ponds, wetland and the proposed Project

Operation Phase

- OM1 Sensitive and aesthetically pleasing design of aboveground structures
- OM2 Landscape integration of built development
- OM3 Provision of roadside planting/ amenity planting / peripheral screening or planting
- OM4 Provision of new tree planting
- OM5 Incorporation of green roof
- OM6 Sensitive design of noise barriers
- OM7 Control of night-time lighting glare
- OM8 Revitalisation and naturalisation of river to create a blue green network
- OM9 Maximise greening on engineering structures and surfaces
- OM10 Landscape treatment on slope
- OM11 Sensitive design of landscape areas / provision of Open Space
- OM12 Off-site woodland compensation
- OM13 Creation of landscape buffer
- OM14 Stepped building height profile
- OM15 Provision of breezeways/ airpaths
- OM16 Provision of view corridor
- OM17 Sensitive layout design of drainage related above-ground structures
- OM18 Watercourse impact mitigation within Wetland Conservation Area

CM1-10 are considered good site practice and other mitigation measures not shown in these figures are considered best site practices throughout the Project and should be implemented to the fullest extent possible

ISSUE/REVISION
 修訂

I/R	DATE	DESCRIPTION	CHK.

STATUS
 階段

SCALE **DIMENSION UNIT**
 比例 尺寸單位
 A3 1:2000 METRES

DATE
 日期
 NOV 2022

KEY PLAN
 索引圖

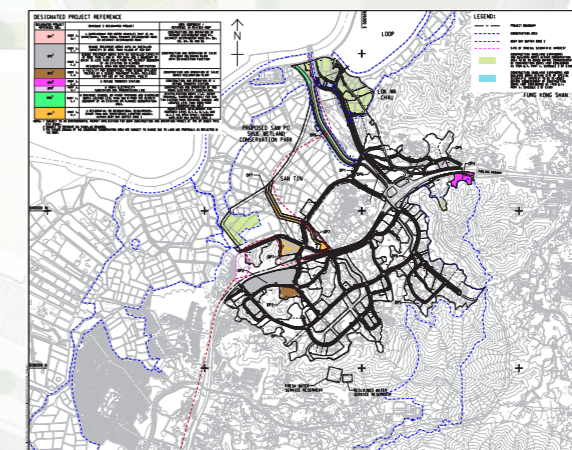
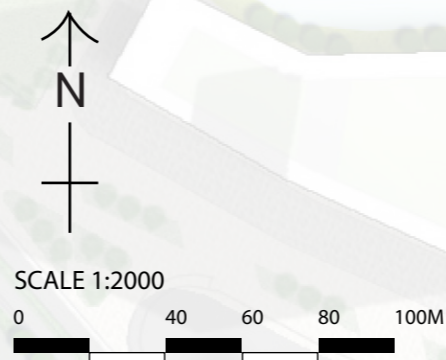
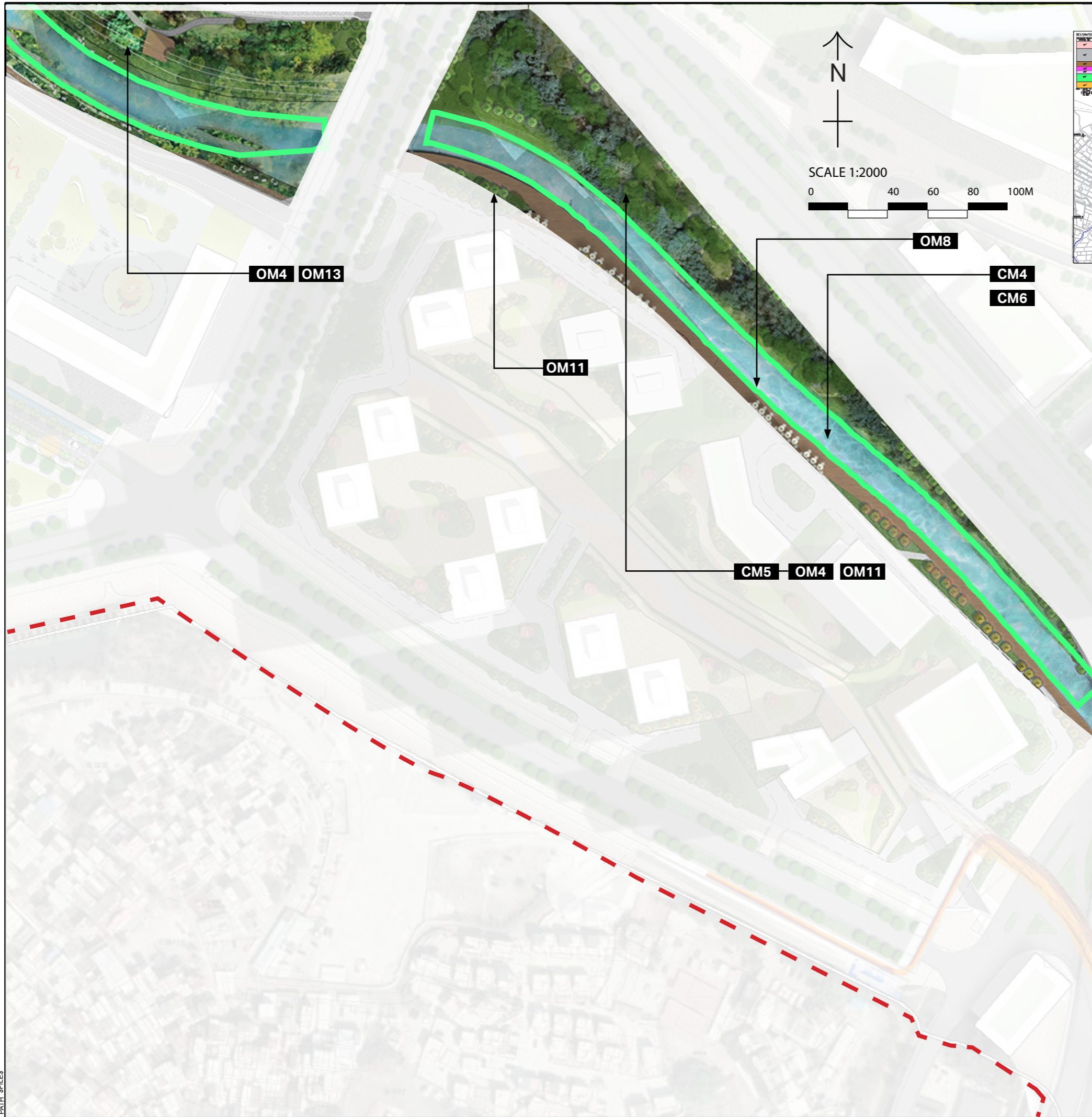
PROJECT NO. **AGREEMENT NO.**
 項目編號 協議編號
 60670882 CE 20/2021

SHEET TITLE
 圖紙名稱
 Mitigation Measures for DP 7,8,9

SHEET NUMBER
 圖紙編號
 60670882/A34/ Figure 14.17.23

This drawing has been prepared for the use of AECOM's client. It may not be used, modified, reproduced or relied upon by third parties, except as agreed by AECOM or as required by law. AECOM accepts no responsibility, and denies any liability whatsoever, to any party that uses or relies on this drawing without AECOM's express written consent. Do not scale this document. All measurements must be obtained from the stated dimensions.

ISO A3 297mm x 420mm
 Approved:
 Checked:
 Designer:
 Project Management Initials:
 \$USERS \$DATES
 PATH \$FILES



LEGEND

—	Project boundary		DP5*
	DP1		DP6
	DP2		DP7
	DP3		
	DP4*		

* EP to be applied under separate EIA

Design Measures
 DM1 Provision of Wildlife corridor where appropriate and applicable

Mitigation Measures

Construction Phase

- CM1 Preservation of existing vegetation
- CM2 Transplantation of existing trees
- CM3 Reinstatement of temporarily disturbed landscape areas
- CM4 Minimise disturbance on watercourses
- CM5 Minimise topographical changes
- CM6 Management of construction activities and facilities
- CM7 Control on night- time lighting
- CM8 Construction of decorative hoarding around construction works
- CM9 Advance planting of screen planting
- CM10 Creating interface between ponds, wetland and the proposed Project

Operation Phase

- OM1 Sensitive and aesthetically pleasing design of aboveground structures
- OM2 Landscape integration of built development
- OM3 Provision of roadside planting/ amenity planting / peripheral screening or planting
- OM4 Provision of new tree planting
- OM5 Incorporation of green roof
- OM6 Sensitive design of noise barriers
- OM7 Control of night-time lighting glare
- OM8 Revitalisation and naturalisation of river to create a blue green network
- OM9 Maximise greening on engineering structures and surfaces
- OM10 Landscape treatment on slope
- OM11 Sensitive design of landscape areas / provision of Open Space
- OM12 Off-site woodland compensation
- OM13 Creation of landscape buffer
- OM14 Stepped building height profile
- OM15 Provision of breezeways/ airpaths
- OM16 Provision of view corridor
- OM17 Sensitive layout design of drainage related above-ground structures
- OM18 Watercourse impact mitigation within Wetland Conservation Area

CM1-10 are considered good site practice and other mitigation measures not shown in these figures are considered best site practices throughout the Project and should be implemented to the fullest extent possible

ISSUE/REVISION
 修訂

I/R	DATE	DESCRIPTION	CHK.
修訂	日期	內容摘要	核核

STATUS
 階段

SCALE
 比例
 A3 1:2000

DIMENSION UNIT
 尺寸單位
 METRES

DATE
 日期
 NOV 2022

KEY PLAN
 索引圖

PROJECT NO.
 項目編號
 60670882

AGREEMENT NO.
 協議編號
 CE 20/2021

SHEET TITLE
 圖紙名稱
 Mitigation Measures for DP 6

SHEET NUMBER
 圖紙編號
 60670882/A34/ Figure 14.17.24

This drawing has been prepared for the use of AECOM's client. It may not be used, modified, reproduced or relied upon by third parties, except as agreed by AECOM or as required by law. AECOM accepts no responsibility, and denies any liability whatsoever, to any party that uses or relies on this drawing without AECOM's express written consent. Do not scale this document. All measurements must be obtained from the stated dimensions.

LEGEND

- Project boundary
 - DP1
 - DP2
 - DP3
 - DP4*
 - DP5*
 - DP6
 - DP7
- * EP to be applied under separate EIA

Design Measures

DM1 Provision of Wildlife corridor where appropriate and applicable

Mitigation Measures

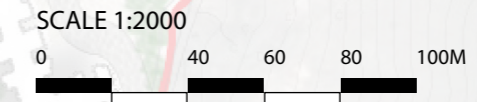
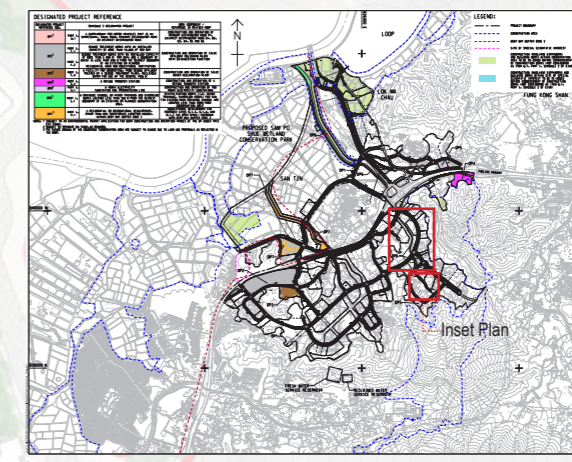
Construction Phase

- CM1 Preservation of existing vegetation
- CM2 Transplantation of existing trees
- CM3 Reinstatement of temporarily disturbed landscape areas
- CM4 Minimise disturbance on watercourses
- CM5 Minimise topographical changes
- CM6 Management of construction activities and facilities
- CM7 Control on night- time lighting
- CM8 Construction of decorative hoarding around construction works
- CM9 Advance planting of screen planting
- CM10 Creating interface between ponds, wetland and the proposed Project

Operation Phase

- OM1 Sensitive and aesthetically pleasing design of aboveground structures
- OM2 Landscape integration of built development
- OM3 Provision of roadside planting/ amenity planting / peripheral screening or planting
- OM4 Provision of new tree planting
- OM5 Incorporation of green roof
- OM6 Sensitive design of noise barriers
- OM7 Control of night-time lighting glare
- OM8 Revitalisation and naturalisation of river to create a blue green network
- OM9 Maximise greening on engineering structures and surfaces
- OM10 Landscape treatment on slope
- OM11 Sensitive design of landscape areas / provision of Open Space
- OM12 Off-site woodland compensation
- OM13 Creation of landscape buffer
- OM14 Stepped building height profile
- OM15 Provision of breezeways/ airpaths
- OM16 Provision of view corridor
- OM17 Sensitive layout design of drainage related above-ground structures
- OM18 Watercourse impact mitigation within Wetland Conservation Area

CM1-10 are considered good site practice and other mitigation measures not shown in these figures are considered best site practices throughout the Project and should be implemented to the fullest extent possible



ISSUE/REVISION

NO.	DATE	DESCRIPTION	CHK.

STATUS

--

SCALE	DIMENSION UNIT
A3 1:2000	METRES

DATE

NOV 2022

KEY PLAN

--

PROJECT NO.	AGREEMENT NO.
60670882	CE 20/2021

SHEET TITLE

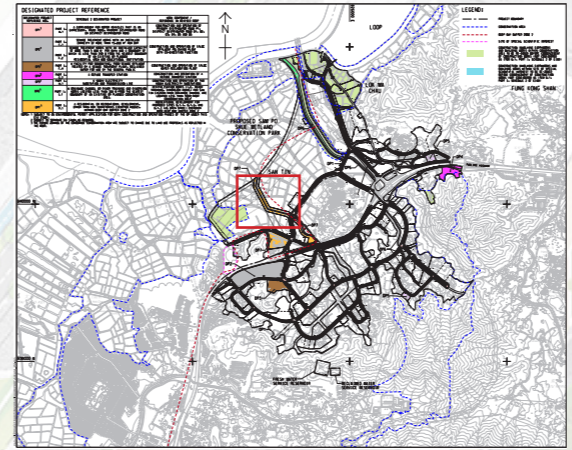
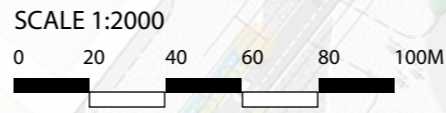
Mitigation Measures for DP 6

SHEET NUMBER

60670882/A34/ Figure 14.17.25

This drawing has been prepared for the use of AECOM's client. It may not be used, modified, reproduced or relied upon by third parties, except as agreed by AECOM or as required by law. AECOM accepts no responsibility, and denies any liability whatsoever, to any party that uses or relies on this drawing without AECOM's express written consent. Do not scale this document. All measurements must be obtained from the stated dimensions.

ISO A3 297mm x 420mm
 Approved:
 Checked:
 Designer:
 Project Management Initials:
 \$DATES \$USERS \$PATH \$FILES



LEGEND

— Project boundary	— DP5*
— DP1	— DP6
— DP2	— DP7
— DP3	
— DP4*	

* EP to be applied under separate EIA

Design Measures

DM1 Provision of Wildlife corridor where appropriate and applicable

Mitigation Measures

Construction Phase

CM1 Preservation of existing vegetation
 CM2 Transplantation of existing trees
 CM3 Reinstatement of temporarily disturbed landscape areas
 CM4 Minimise disturbance on watercourses
 CM5 Minimise topographical changes
 CM6 Management of construction activities and facilities
 CM7 Control on night-time lighting
 CM8 Construction of decorative hoarding around construction works
 CM9 Advance planting of screen planting
 CM10 Creating interface between ponds, wetland and the proposed Project

Operation Phase

OM1 Sensitive and aesthetically pleasing design of aboveground structures
 OM2 Landscape integration of built development
 OM3 Provision of roadside planting/ amenity planting / peripheral screening or planting
 OM4 Provision of new tree planting
 OM5 Incorporation of green roof
 OM6 Sensitive design of noise barriers
 OM7 Control of night-time lighting glare
 OM8 Revitalisation and naturalisation of river to create a blue green network
 OM9 Maximise greening on engineering structures and surfaces
 OM10 Landscape treatment on slope
 OM11 Sensitive design of landscape areas / provision of Open Space
 OM12 Off-site woodland compensation
 OM13 Creation of landscape buffer
 OM14 Stepped building height profile
 OM15 Provision of breezeways/ airpaths
 OM16 Provision of view corridor
 OM17 Sensitive layout design of drainage related above-ground structures
 OM18 Watercourse impact mitigation within Wetland Conservation Area

CM1-10 are considered good site practice and other mitigation measures not shown in these figures are considered best site practices throughout the Project and should be implemented to the fullest extent possible

AECOM

PROJECT
 項目
FIRST PHASE DEVELOPMENT OF THE NEW TERRITORIES NORTH – SAN TIN / LOK MA CHAU DEVELOPMENT NODE – INVESTIGATION

CLIENT
 業主

CEDD 土木工程拓展署
 Civil Engineering and Development Department

規劃署
 Planning Department

CONSULTANT
 顧問公司

AECOM Asia Company Ltd.
 www.aecom.com

SUB-CONSULTANTS
 分判工程師/顧問公司

ISSUE/REVISION
 修訂

I/R	DATE	DESCRIPTION	CHK.

STATUS
 階段

SCALE
 比例

DIMENSION UNIT
 尺寸單位

A3 1:2000 METRES

DATE
 日期

NOV 2022

KEY PLAN
 索引圖

PROJECT NO.
 項目編號

AGREEMENT NO.
 協議編號

60670882 CE 20/2021

SHEET TITLE
 圖紙名稱

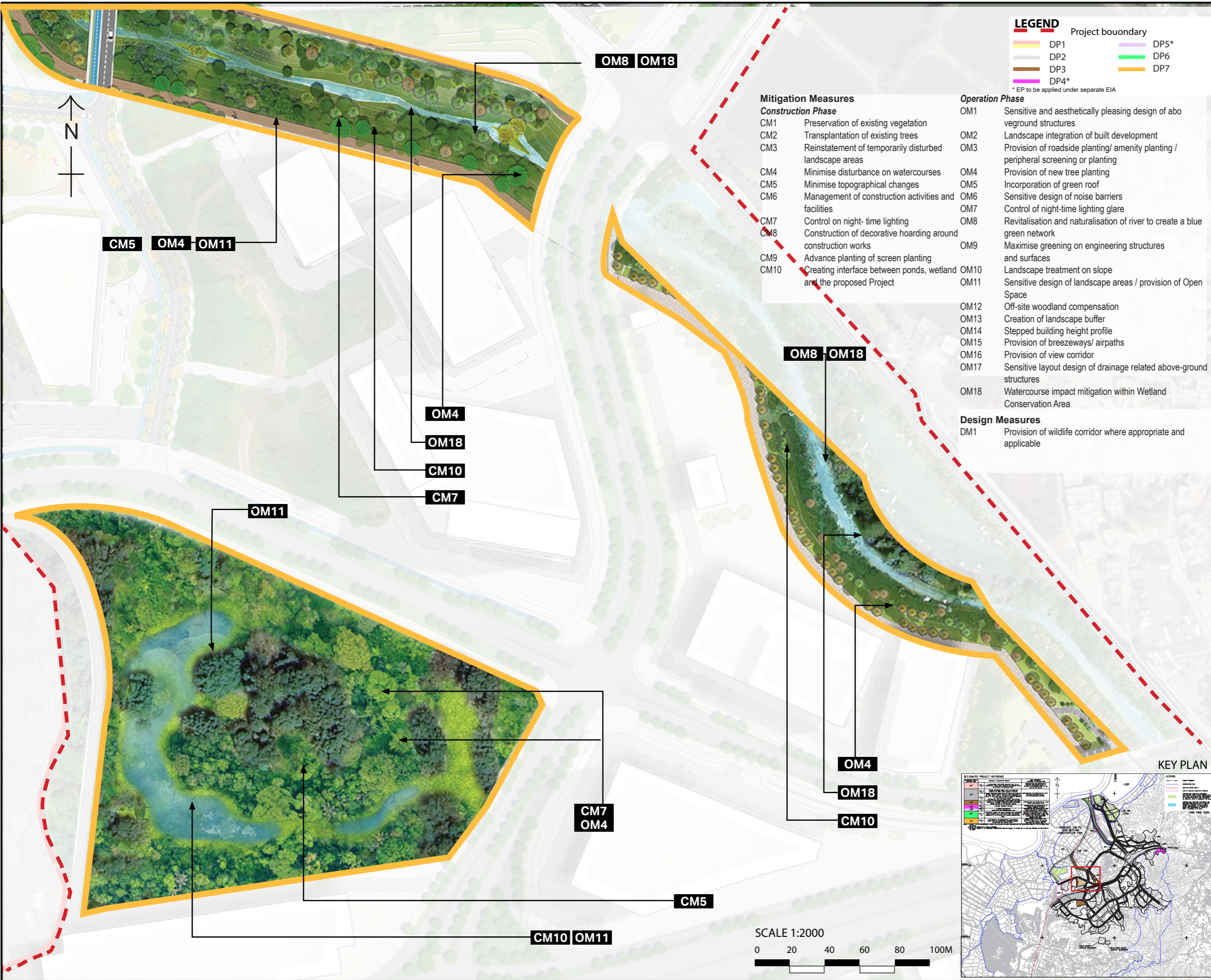
Mitigation Measures for DP 6,7

SHEET NUMBER
 圖紙編號

60670882/A34/ Figure 14.17.26

This drawing has been prepared for the use of AECOM's client. It may not be used, modified, reproduced or relied upon by third parties, except as agreed by AECOM or as required by law. AECOM accepts no responsibility, and denies any liability whatsoever, to any party that uses or relies on this drawing without AECOM's express written consent. Do not scale this document. All measurements must be obtained from the stated dimensions.

ISO A3 297mm x 420mm
Approved:
Checked:
Designer:
Project Management Initials:
Plot File by: \$USERS \$DATES
PATH \$FILES



LEGEND

	Project boundary		DP5*
	DP1		DP6
	DP2		DP7
	DP3		
	DP4*		

* EP to be applied under separate EIA

Mitigation Measures

Construction Phase

- CM1 Preservation of existing vegetation
- CM2 Transplantation of existing trees
- CM3 Reinstatement of temporarily disturbed landscape areas
- CM4 Minimise disturbance on watercourses
- CM5 Minimise topographical changes
- CM6 Management of construction activities and facilities
- CM7 Control on night-time lighting
- CM8 Construction of decorative hoarding around construction works
- CM9 Advance planting of screen planting
- CM10 Creating interface between ponds, wetland and the proposed Project

Operation Phase

- OM1 Sensitive and aesthetically pleasing design of above-ground structures
- OM2 Landscape integration of built development
- OM3 Provision of roadside planting/ amenity planting / peripheral screening or planting
- OM4 Provision of new tree planting
- OM5 Incorporation of green roof
- OM6 Sensitive design of noise barriers
- OM7 Control of night-time lighting glare
- OM8 Revitalisation and naturalisation of river to create a blue green network
- OM9 Maximise greening on engineering structures and surfaces
- OM10 Landscape treatment on slope
- OM11 Sensitive design of landscape areas / provision of Open Space
- OM12 Off-site woodland compensation
- OM13 Creation of landscape buffer
- OM14 Stepped building height profile
- OM15 Provision of breezeways/ airpaths
- OM16 Provision of view corridor
- OM17 Sensitive layout design of drainage related above-ground structures
- OM18 Watercourse impact mitigation within Wetland Conservation Area

Design Measures

- DM1 Provision of wildlife corridor where appropriate and applicable

ISSUE/REVISION

I/R	DATE	DESCRIPTION	CHK.

STATUS

SCALE A3 1:2000
DIMENSION UNIT METRES

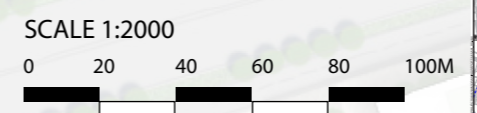
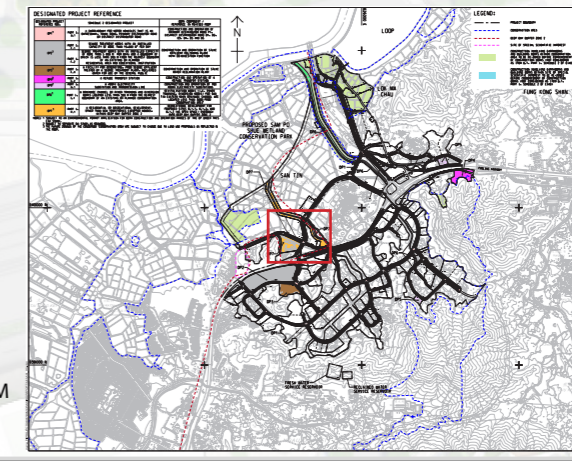
DATE NOV 2022

KEY PLAN

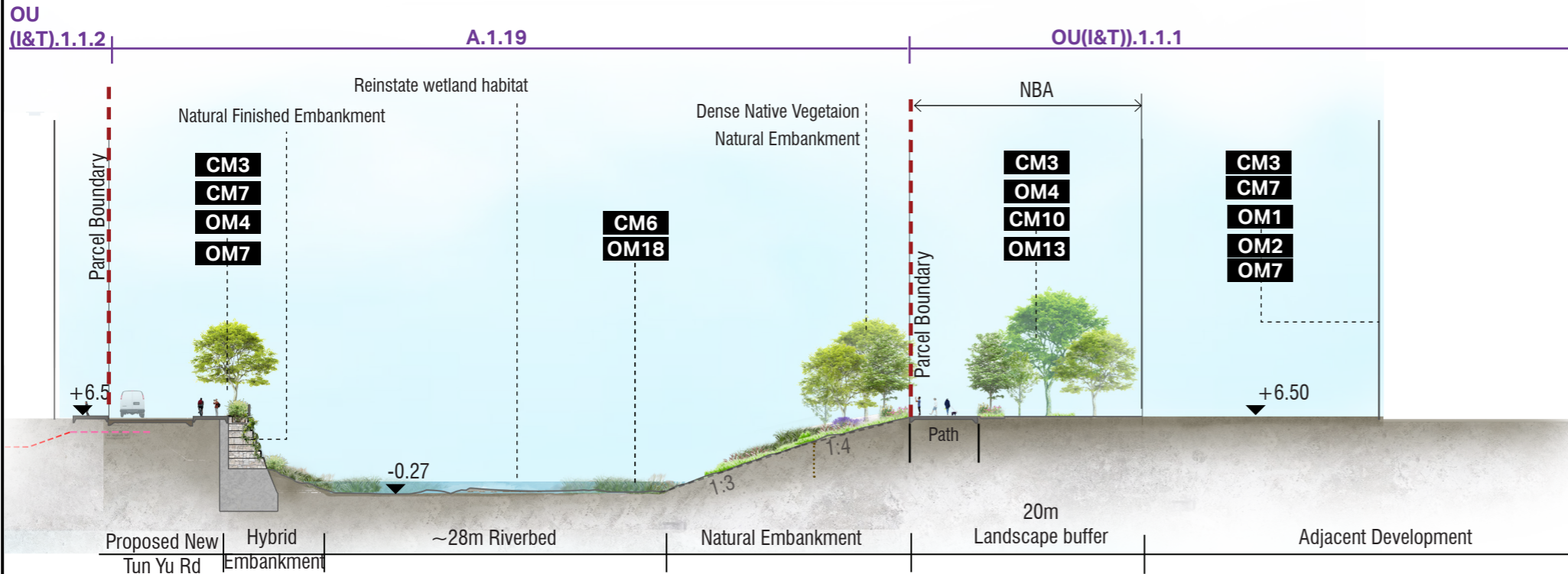
PROJECT NO. 60670882
AGREEMENT NO. CE 20/2021

SHEET TITLE Mitigation Measures for DP 6,7

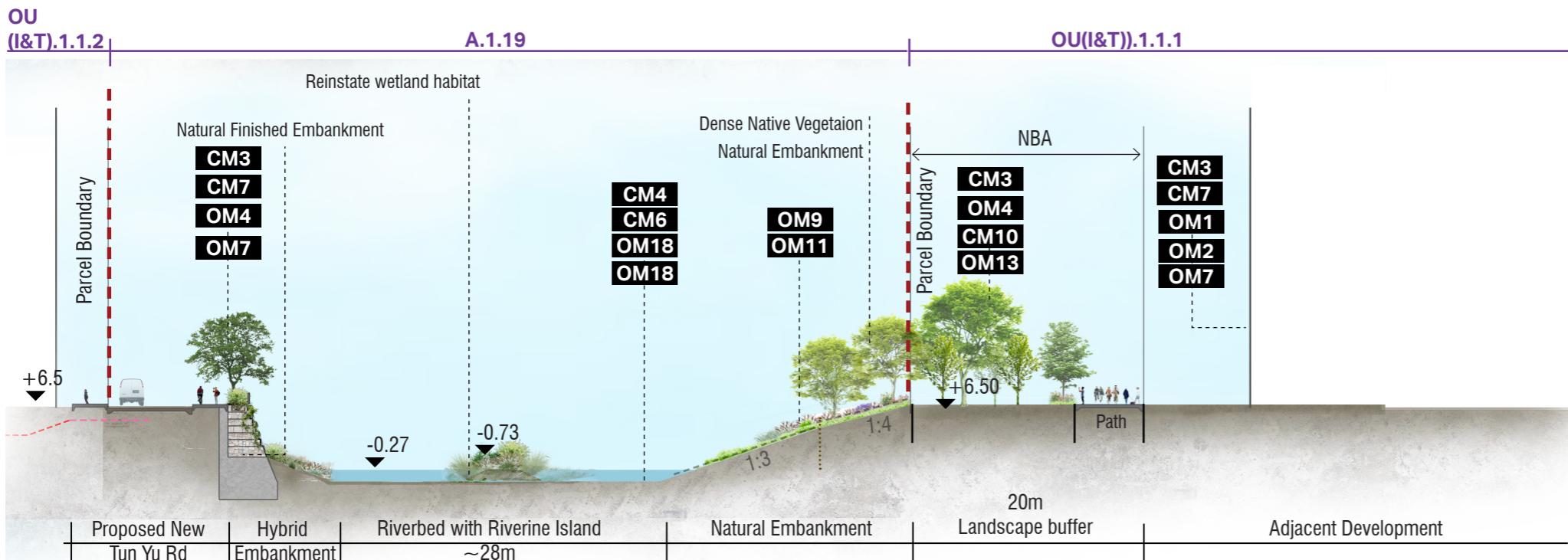
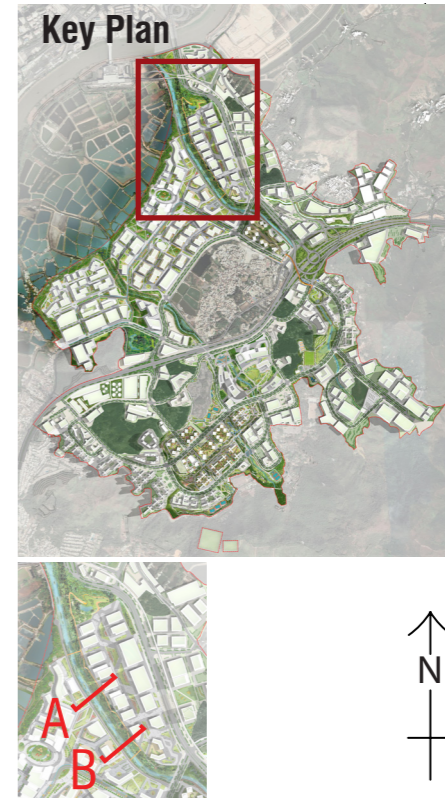
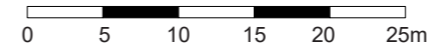
SHEET NUMBER 60670882/A34/ Figure 14.17.27



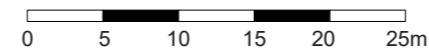
This drawing has been prepared for the use of AECOM's client. It may not be used, modified, reproduced or relied upon by third parties, except as agreed by AECOM or as required by law. AECOM accepts no responsibility, and denies any liability whatsoever, to any party that uses or relies on this drawing without AECOM's express written consent. Do not scale this document. All measurements must be obtained from the stated dimensions.



Section A



Section B



Mitigation Measures

- CM1- Preservation of existing vegetation
- CM2- Transplantation of existing trees
- CM3- Reinstatement of temporarily disturbed landscape areas
- CM4- Minimise disturbance on watercourses
- CM5- Minimise topographical changes
- CM6- Management of construction activities and facilities
- CM7- Control on night-time lighting
- CM8- Construction of decorative hoarding around construction works
- CM9 - Advance planting of screen planting
- CM10- Creating interface between ponds, wetland and the proposed Project

- OM1- Sensitive and aesthetically pleasing design of aboveground structures
- OM2- Landscape integration of built development
- OM3- Provision of roadside planting/ amenity planting / peripheral screening or planting
- OM4- Provision of new tree planting
- OM5- Incorporation of green roof
- OM6- Sensitive design of noise barriers
- OM7- Control of night-time lighting glare
- OM8- Revitalisation and naturalisation of river to create a blue green network

- OM9-Maximise greening on engineering structures and surfaces
- OM10-Landscape treatment on slope
- OM11-Sensitive design of landscape areas / provision of Open Space
- OM12 - Off-site woodland compensation
- OM13- Creation of landscape buffer
- OM14- Stepped building height profile
- OM15- Provision of breezeway/ airpaths
- OM16- Provision of view corridor

Design Measures

- DM1-Provision of wildlife corridor where appropriate and applicable

- OM17- Sensitive layout design of drainage related above-ground structures
- OM18- Watercourse impact mitigation within Wetland Conservation Area

CM1-10 are considered good site practice and other mitigation measures not shown in these figures are considered best site practices throughout the Project and should be implemented to the fullest extent possible.



ISSUE/REVISION

I/R	DATE	DESCRIPTION	CHK.

STATUS

SCALE DIMENSION UNIT

A3 1:20,000 METRES

DATE

NOV 2022

KEY PLAN

PROJECT NO. AGREEMENT NO.

60670882 CE 20/2021

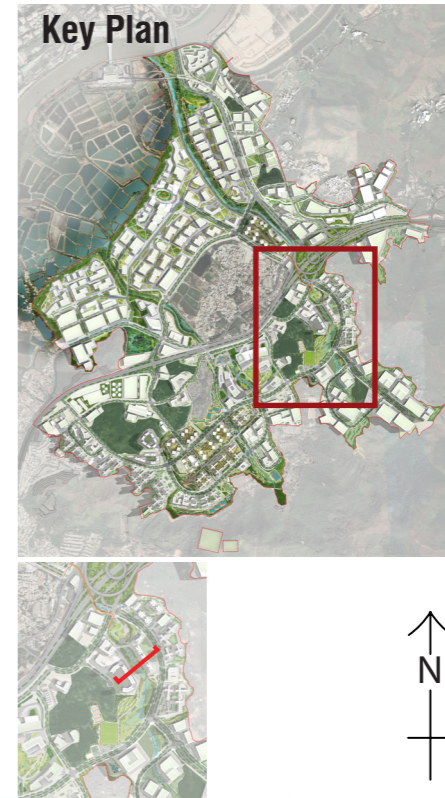
SHEET TITLE

Mitigation Measures for DP 6- Section (sheet 1)

SHEET NUMBER

60670882/A34/ Figure 14.17.28

This drawing has been prepared for the use of AECOM's client. It may not be used, modified, reproduced or relied upon by third parties, except as agreed by AECOM or as required by law. AECOM accepts no responsibility, and denies any liability whatsoever, to any party that uses or relies on this drawing without AECOM's express written consent. Do not scale this document. All measurements must be obtained from the stated dimensions.



ISSUE/REVISION

I/R	DATE	DESCRIPTION	CHK.

STATUS

SCALE DIMENSION UNIT

A3 1:20,000 METRES

DATE

NOV 2022

KEY PLAN

PROJECT NO. AGREEMENT NO.

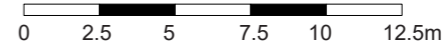
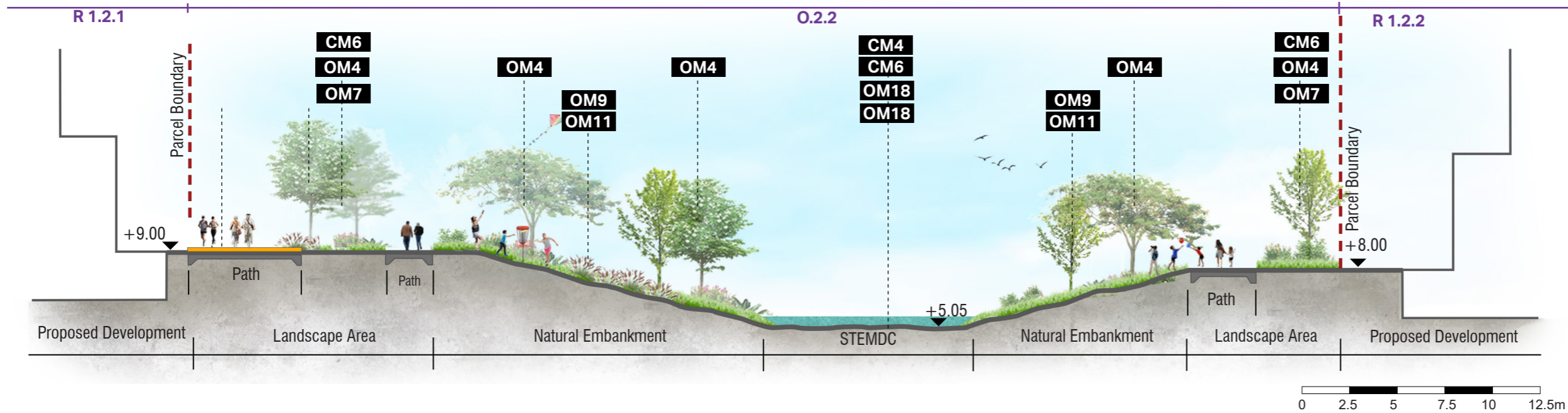
60670882 CE 20/2021

SHEET TITLE

Mitigation Measures for DP 6-Section (sheet 2)

SHEET NUMBER

60670882/A34/ Figure 14.17.29



Mitigation Measures

- CM1- Preservation of existing vegetation
- CM2- Transplantation of existing trees
- CM3- Reinstatement of temporarily disturbed landscape areas
- CM4- Minimise disturbance on watercourses
- CM5- Minimise topographical changes
- CM6- Management of construction activities and facilities
- CM7- Control on night-time lighting
- CM8- Construction of decorative hoarding around construction works
- CM9 - Advance planting of screen planting
- CM10- Creating interface between ponds, wetland and the proposed Project

- OM1- Sensitive and aesthetically pleasing design of aboveground structures
- OM2- Landscape integration of built development
- OM3- Provision of roadside planting/ amenity planting / peripheral screening or planting
- OM4- Provision of new tree planting
- OM5- Incorporation of green roof
- OM6- Sensitive design of noise barriers
- OM7- Control of night-time lighting glare
- OM8- Revitalisation and naturalisation of river to create a blue green network

- OM9-Maximise greening on engineering structures and surfaces
- OM10-Landscape treatment on slope
- OM11-Sensitive design of landscape areas / provision of Open Space
- OM12 - Off-site woodland compensation
- OM13- Creation of landscape buffer
- OM14- Stepped building height profile
- OM15- Provision of breezeway/ airpaths
- OM16- Provision of view corridor

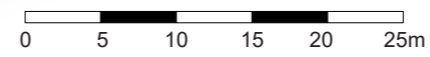
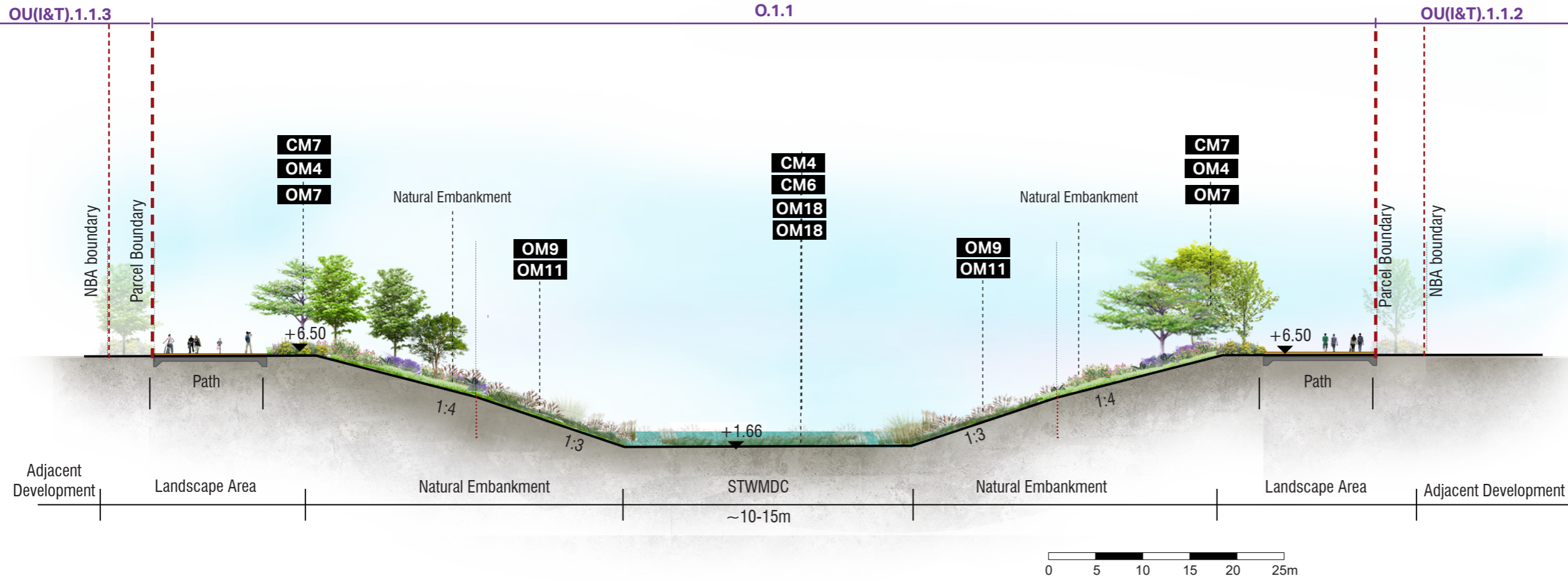
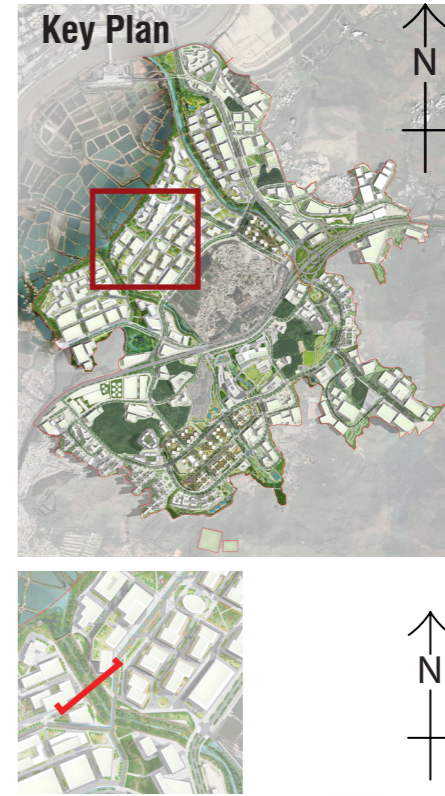
Design Measures

- DM1-Provision of wildlife corridor where appropriate and applicable

- OM17- Sensitive layout design of drainage related above-ground structures
- OM18- Watercourse impact mitigation within Wetland Conservation Area

CM1-10 are considered good site practice and other mitigation measures not shown in these figures are considered best site practices throughout the Project and should be implemented to the fullest extent possible.

This drawing has been prepared for the use of AECOM's client. It may not be used, modified, reproduced or relied upon by third parties, except as agreed by AECOM or as required by law. AECOM accepts no responsibility, and denies any liability whatsoever, to any party that uses or relies on this drawing without AECOM's express written consent. Do not scale this document. All measurements must be obtained from the stated dimensions.



Mitigation Measures

- CM1- Preservation of existing vegetation
- CM2- Transplantation of existing trees
- CM3- Reinstatement of temporarily disturbed landscape areas
- CM4- Minimise disturbance on watercourses
- CM5- Minimise topographical changes
- CM6- Management of construction activities and facilities
- CM7- Control on night-time lighting
- CM8- Construction of decorative hoarding around construction works
- CM9 - Advance planting of screen planting
- CM10- Creating interface between ponds, wetland and the proposed Project

- OM1- Sensitive and aesthetically pleasing design of aboveground structures
- OM2- Landscape integration of built development
- OM3- Provision of roadside planting/ amenity planting / peripheral screening or planting
- OM4- Provision of new tree planting
- OM5- Incorporation of green roof
- OM6- Sensitive design of noise barriers
- OM7- Control of night-time lighting glare
- OM8- Revitalisation and naturalisation of river to create a blue green network

- OM9-Maximise greening on engineering structures and surfaces
- OM10-Landscape treatment on slope
- OM11-Sensitive design of landscape areas / provision of Open Space
- OM12 - Off-site woodland compensation
- OM13- Creation of landscape buffer
- OM14- Stepped building height profile
- OM15- Provision of breezeway/ airpaths
- OM16- Provision of view corridor

Design Measures

- DM1-Provision of wildlife corridor where appropriate and applicable

CM1-10 are considered good site practice and other mitigation measures not shown in these figures are considered best site practices throughout the Project and should be implemented to the fullest extent possible.

ISSUE/REVISION

I/R	DATE	DESCRIPTION	CHK.

STATUS

SCALE

比例 尺寸單位
 A3 1:20,000 METRES

DATE

日期
 NOV 2022

KEY PLAN

索引圖

PROJECT NO.

項目編號
 60670882

AGREEMENT NO.

協議編號
 CE 20/2021

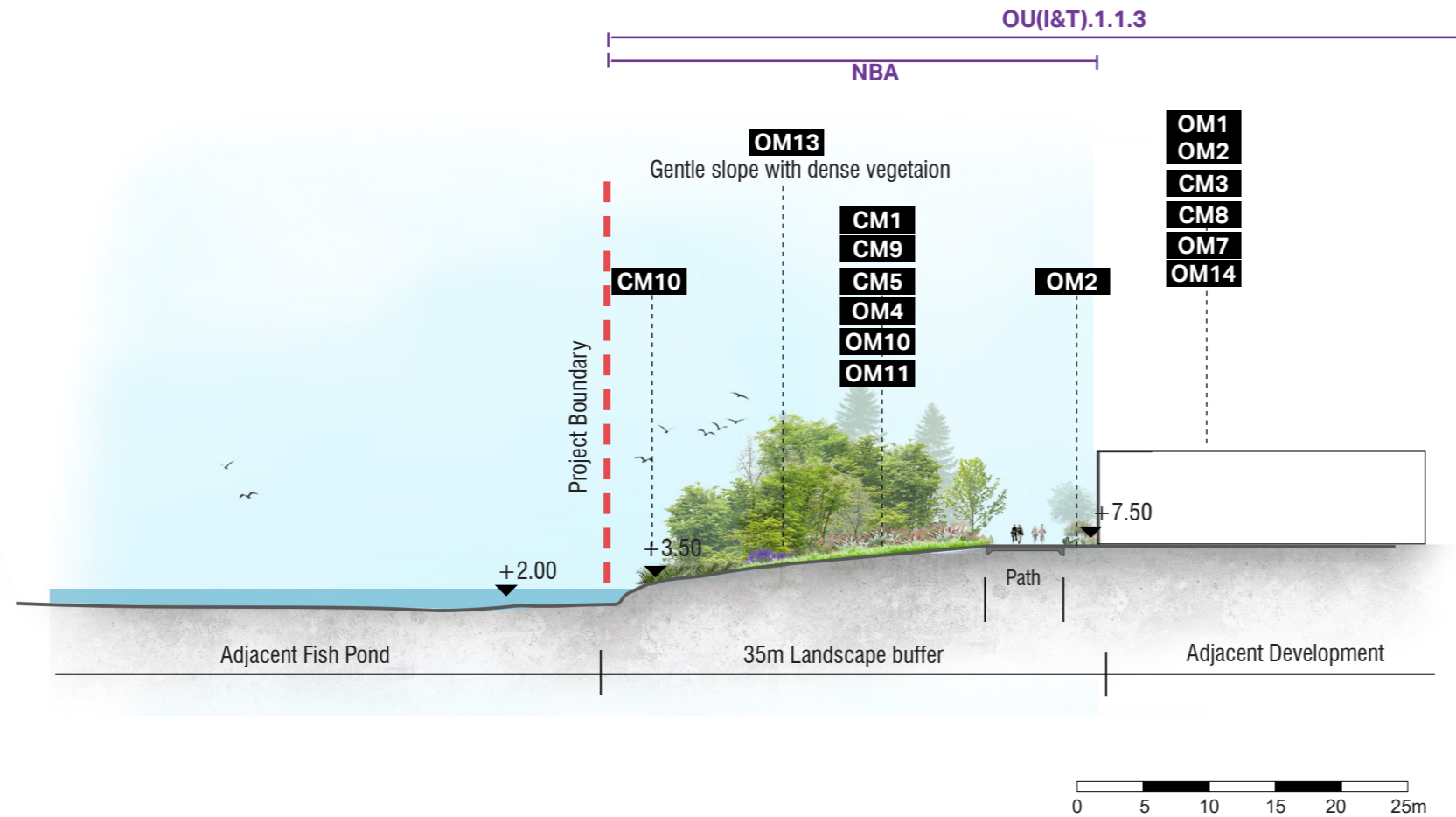
SHEET TITLE

圖紙名稱
 Mitigation Measures for DP7-section

SHEET NUMBER

圖紙編號
 60670882/A34/ Figure 14.17.30

This drawing has been prepared for the use of AECOM's client. It may not be used, modified, reproduced or relied upon by third parties, except as agreed by AECOM or as required by law. AECOM accepts no responsibility, and denies any liability whatsoever, to any party that uses or relies on this drawing without AECOM's express written consent. Do not scale this document. All measurements must be obtained from the stated dimensions.



ISSUE/REVISION
 修訂

I/R	DATE	DESCRIPTION	CHK.
修訂	日期	內容摘要	核對

STATUS
 階段

SCALE **DIMENSION UNIT**
 比例 尺寸單位

A3 1:20,000 METRES

DATE
 日期

NOV 2022

KEY PLAN
 索引圖

PROJECT NO. **AGREEMENT NO.**
 項目編號 協議編號

60670882 CE 20/2021

SHEET TITLE
 圖紙名稱

Mitigation Measures for DP7 section

SHEET NUMBER
 圖紙編號

60670882/A34/ Figure 14.17.31

Mitigation Measures

- CM1- Preservation of existing vegetation
- CM2- Transplantation of existing trees
- CM3- Reinstatement of temporarily disturbed landscape areas
- CM4- Minimise disturbance on watercourses
- CM5- Minimise topographical changes
- CM6- Management of construction activities and facilities
- CM7- Control on night- time lighting
- CM8- Construction of decorative hoarding around construction works
- CM9 - Advance planting of screen planting
- CM10- Creating interface between ponds, wetland and the proposed Project

- OM1- Sensitive and aesthetically pleasing design of aboveground structures
- OM2- Landscape integration of built development
- OM3- Provision of roadside planting/ amenity planting / peripheral screening or planting
- OM4- Provision of new tree planting
- OM5- Incorporation of green roof
- OM6- Sensitive design of noise barriers
- OM7- Control of night-time lighting glare
- OM8- Revitalisation and naturalisation of river to create a blue green network

- OM9-Maximise greening on engineering structures and surfaces
- OM10-Landscape treatment on slope
- OM11-Sensitive design of landscape areas / provision of Open Space
- OM12 - Off-site woodland compensation
- OM13- Creation of landscape buffer
- OM14- Stepped building height profile
- OM15- Provision of breezeway/ airpaths
- OM16- Provision of view corridor

- OM17- Sensitive layout design of drainage related above-ground structures
- OM18- Watercourse impact mitigation within Wetland Conservation Area

Design Measures

- DM1-Provision of wildlife corridor where appropriate and applicable

CM1-10 are considered good site practice and other mitigation measures not shown in these figures are considered best site practices throughout the Project and should be implemented to the fullest extent possible.

This drawing has been prepared for the use of AECOM's client. It may not be used, modified, reproduced or relied upon by third parties, except as agreed by AECOM or as required by law. AECOM accepts no responsibility, and denies any liability whatsoever, to any party that uses or relies on this drawing without AECOM's express written consent. All measurements must be obtained from the stated dimensions.