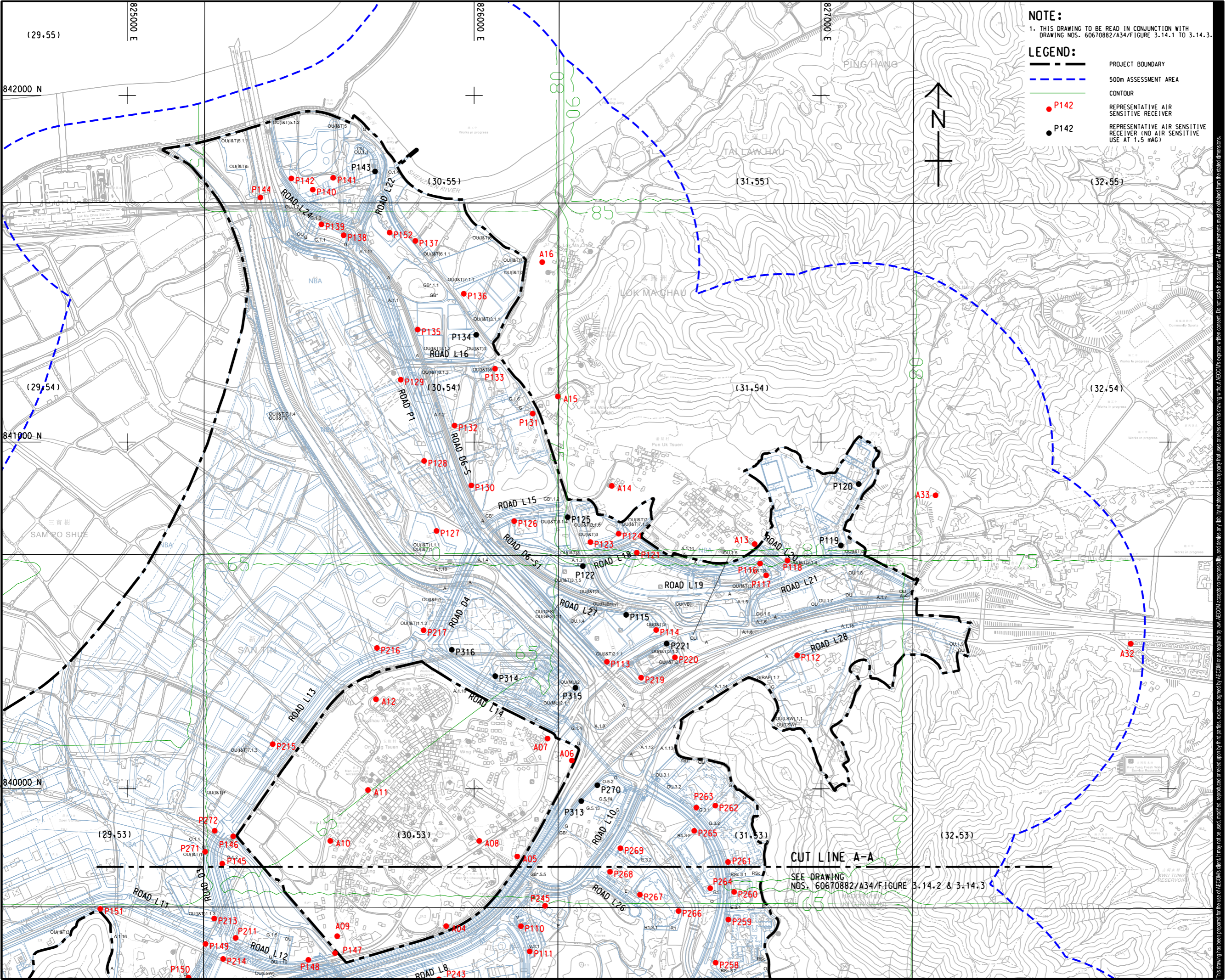


ISO A1 594mm x 841mm
 Approved:
 Checked:
 Designer:
 Project Management Initials:
 Plot File by: Yuxuan, the 11/30/2023
 PATH: P:\PROJECTS\60670882\DRAWING\REPORT\A34\A34_447.dwg



NOTE:
 1. THIS DRAWING TO BE READ IN CONJUNCTION WITH DRAWING NOS. 60670882/A34/FIGURE 3.14.1 TO 3.14.3.

LEGEND:

- PROJECT BOUNDARY
- 500m ASSESSMENT AREA
- CONTOUR
- P142 REPRESENTATIVE AIR SENSITIVE RECEIVER
- P142 REPRESENTATIVE AIR SENSITIVE RECEIVER (NO AIR SENSITIVE USE AT 1.5 mAg)



AECOM

PROJECT
 項目
FIRST PHASE DEVELOPMENT OF THE NEW TERRITORIES NORTH – SAN TIN / LOK MA CHAU DEVELOPMENT NODE – INVESTIGATION

CLIENT
 業主
土木工程拓展署
 Civil Engineering and Development Department
規劃署
 Planning Department

CONSULTANT
 顧問公司
 AECOM Asla Company Ltd.
 www.aecom.com

SUB-CONSULTANTS
 分包工程師/顧問公司

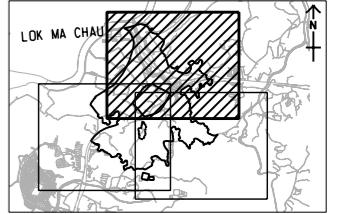
ISSUE/REVISION

NO.	DATE	DESCRIPTION	CHK.

STATUS
 階段

SCALE
 比例
 A3 1: 10000

DIMENSION UNIT
 尺寸單位
 METRES



PROJECT NO.
 項目編號
 60670882

AGREEMENT NO.
 協議編號
 CE 20/2021

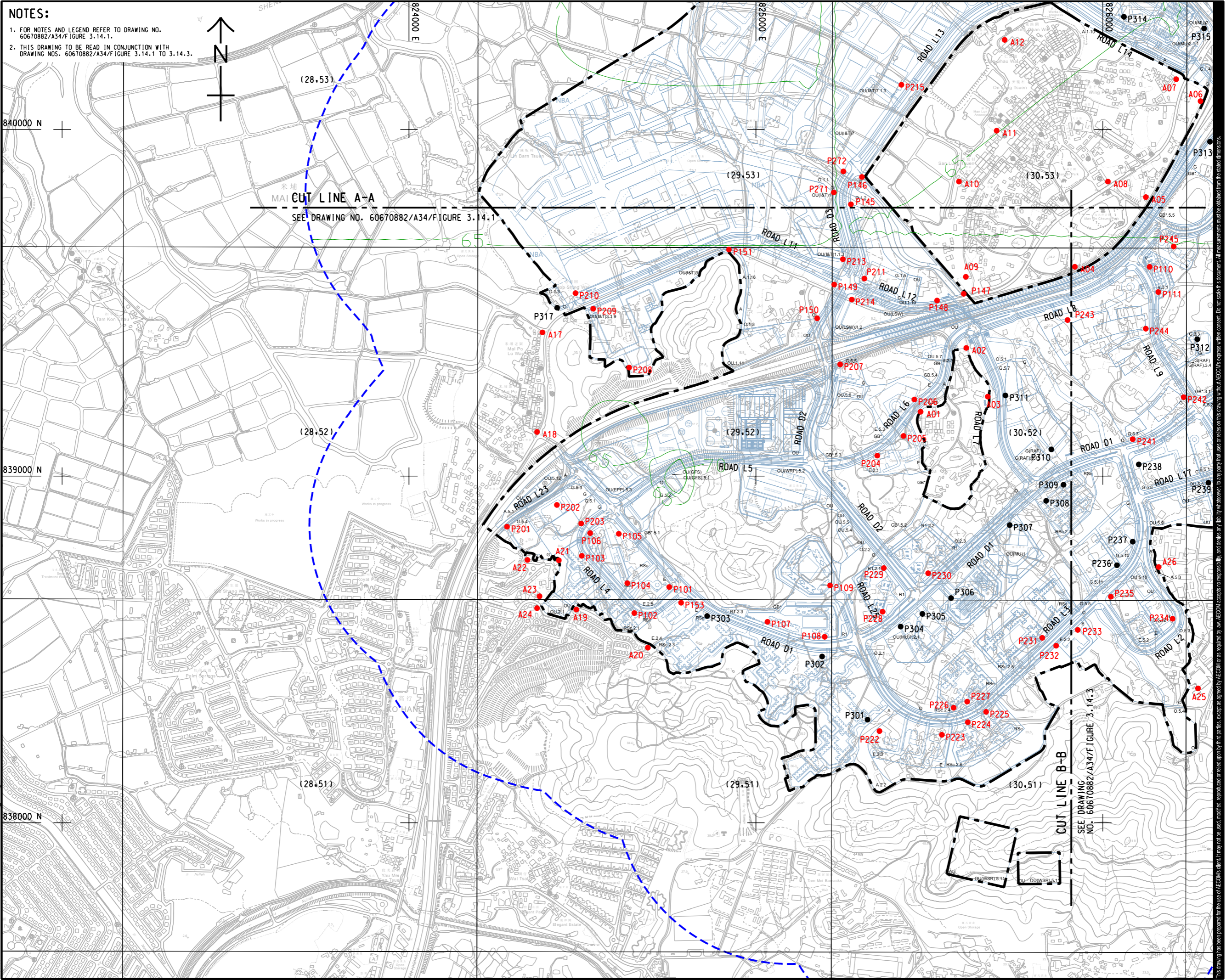
SHEET TITLE
 圖紙名稱
 CONTOUR OF PREDICTED 4TH HIGHEST CUMULATIVE 10-MIN SO2 CONCENTRATION AT 1.5 mAg (UG/M3) (YEAR 2031 AND 2034)

SHEET 1 OF 3

SHEET NUMBER
 圖紙編號
 60670882/A34/FIGURE 3.14.1

This drawing has been prepared for the use of AECOM's client. It may not be used, modified, reproduced or relied upon by third parties, except as agreed by AECOM in writing. AECOM accepts no responsibility, and denies any liability whatsoever, to any party that assesses or relies on this drawing without AECOM's express written consent. All measurements must be obtained from the stated dimensions.

ISO A1 594mm x 841mm
 Approved:
 Checked:
 Designer:
 Project Management Initials:
 Photo by: Yuxuan, the 11/30/2023
 PATH P:\PROJECTS\60670882\DRAWINGREPORT\A3\A34_448.dgn



NOTES:

- FOR NOTES AND LEGEND REFER TO DRAWING NO. 60670882/A34/Figure 3.14.1.
- THIS DRAWING TO BE READ IN CONJUNCTION WITH DRAWING NOS. 60670882/A34/Figure 3.14.1 TO 3.14.3.

MAI CUT LINE A-A
 SEE DRAWING NO. 60670882/A34/Figure 3.14.1

CUT LINE B-B
 SEE DRAWING NO. 60670882/A34/Figure 3.14.3



PROJECT
 項目
 FIRST PHASE DEVELOPMENT OF THE NEW TERRITORIES NORTH – SAN TIN / LOK MA CHAU DEVELOPMENT NODE – INVESTIGATION

CLIENT
 業主
 土木工程拓展署
 Civil Engineering and Development Department
 規劃署
 Planning Department

CONSULTANT
 顧問公司
 AECOM Asla Company Ltd.
 www.aecom.com

SUB-CONSULTANTS
 分判工程師/顧問公司

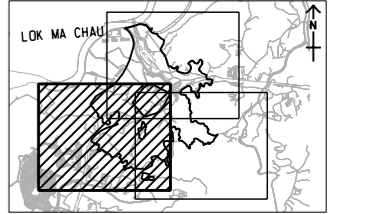
ISSUE/REVISION
 修訂

IR	DATE	DESCRIPTION	CHK.

STATUS
 階段

SCALE **DIMENSION UNIT**
 比例 尺寸單位
 A3 1: 10000 METRES

KEY PLAN A3 1: 200000



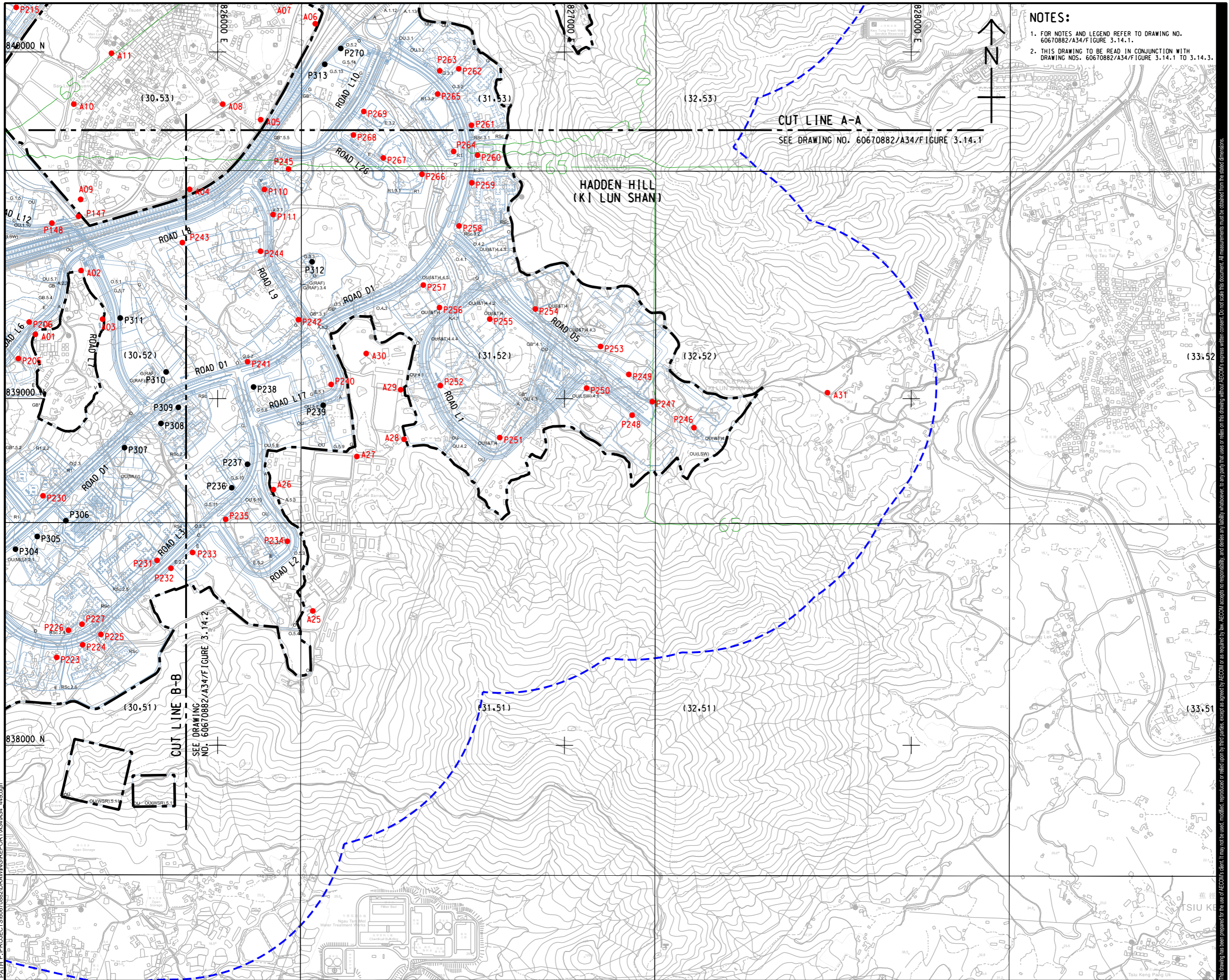
PROJECT NO. **AGREEMENT NO.**
 項目編號 協議編號
 60670882 CE 20/2021

SHEET TITLE
 圖紙名稱
 CONTOUR OF PREDICTED 4TH HIGHEST CUMULATIVE 10-MIN SO2 CONCENTRATION AT 1.5 mAG (UG/m3) (YEAR 2031 AND 2034)

SHEET NUMBER
 圖紙編號
 60670882/A34/Figure 3.14.2

This drawing has been prepared for the use of AECOM's client. It may not be used, modified, reproduced or relied upon by third parties, except as agreed by AECOM or as required by law. AECOM accepts no responsibility, and denies any liability whatsoever, to any party that assesses or relies on this drawing without AECOM's express written consent. Do not scale this document. All measurements must be obtained from the stated dimensions.

ISO A1 594mm x 841mm
 Approved:
 Checked:
 Designer:
 Project Management Initials:
 Plot File by: Yuxuan, the 11/30/2023
 PATH: P:\PROJECTS\60670882\DRAWING\REPORT\A34\A34_448.dgn
 This drawing has been prepared for the use of AECOM's client. It may not be used, modified, reproduced or relied upon by third parties, except as agreed by AECOM or as required by law. AECOM accepts no responsibility, and denies any liability whatsoever, for any party that assesses or relies on this drawing without AECOM's express written consent. All measurements must be obtained from the stated dimensions.



NOTES:

- FOR NOTES AND LEGEND REFER TO DRAWING NO. 60670882/A34/FIGURE 3.14.1.
- THIS DRAWING TO BE READ IN CONJUNCTION WITH DRAWING NOS. 60670882/A34/FIGURE 3.14.1 TO 3.14.3.

CUT LINE A-A
SEE DRAWING NO. 60670882/A34/FIGURE 3.14.1

CUT LINE B-B
SEE DRAWING NO. 60670882/A34/FIGURE 3.14.2

AECOM

PROJECT
 項目
FIRST PHASE DEVELOPMENT OF THE NEW TERRITORIES NORTH – SAN TIN / LOK MA CHAU DEVELOPMENT NODE – INVESTIGATION

CLIENT
 業主
 **土木工程拓展署**
 Civil Engineering and Development Department
 **規劃署**
 Planning Department

CONSULTANT
 顧問公司
 AECOM Asla Company Ltd.
 www.aecom.com

SUB-CONSULTANTS
 分判工程師/公司

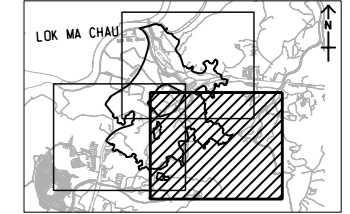
ISSUE/REVISION
 修訂

NO.	DATE	DESCRIPTION	CHK.

STATUS
 階段

SCALE
 比例
 A3 1:10000

DIMENSION UNIT
 尺寸單位
 METRES



PROJECT NO.
 項目編號
 60670882

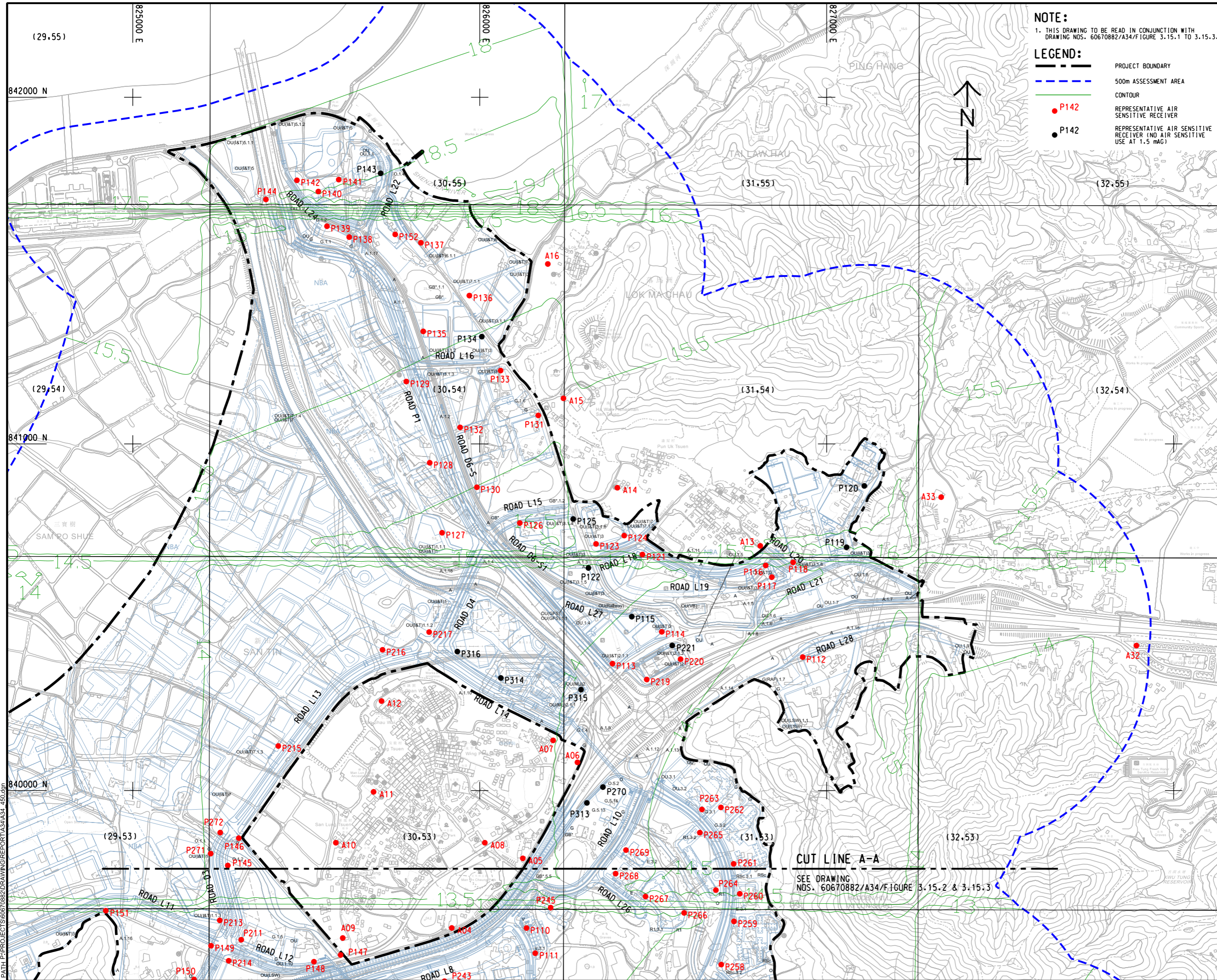
AGREEMENT NO.
 協議編號
 CE 20/2021

SHEET TITLE
 圖紙名稱
 CONTOUR OF PREDICTED 4TH HIGHEST CUMULATIVE 10-MIN SO2 CONCENTRATION AT 1.5 mAG (UG/m3) (YEAR 2031 AND 2034)

SHEET NUMBER
 圖紙編號
 60670882/A34/FIGURE 3.14.3

SHEET 3 OF 3

ISO A1 594mm x 841mm
 Approved:
 Checked:
 Designer:
 Project Management Initials:
 Plot File by: Yuxuan, the 11/30/2023
 PATH P:\PROJECTS\60670882\DRAWING\REPORT\A34\A34_450.dwg



NOTE:
 1. THIS DRAWING TO BE READ IN CONJUNCTION WITH DRAWING NOS. 60670882/A34/FIGURE 3.15.1 TO 3.15.3.

LEGEND:

- PROJECT BOUNDARY
- 500m ASSESSMENT AREA
- CONTOUR
- P142 REPRESENTATIVE AIR SENSITIVE RECEIVER
- P142 REPRESENTATIVE AIR SENSITIVE RECEIVER (NO AIR SENSITIVE USE AT 1.5 mAG)



AECOM

PROJECT
 項目
FIRST PHASE DEVELOPMENT OF THE NEW TERRITORIES NORTH – SAN TIN / LOK MA CHAU DEVELOPMENT NODE – INVESTIGATION

CLIENT
 業主
土木工程拓展署
 Civil Engineering and Development Department
規劃署
 Planning Department

CONSULTANT
 顧問公司
 AECOM Asla Company Ltd.
 www.aecom.com

SUB-CONSULTANTS
 分包工程師/公司

ISSUE/REVISION
 修訂

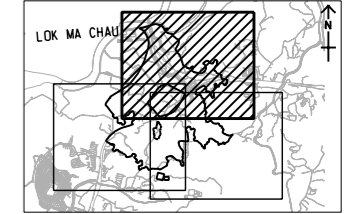
NO.	DATE	DESCRIPTION	CHK.

STATUS
 階段

SCALE
 比例
 A3 1: 10000

DIMENSION UNIT
 單位
 METRES

KEY PLAN A3 1: 20000
 索引圖



PROJECT NO.
 項目編號
 60670882

AGREEMENT NO.
 協議編號
 CE 20/2021

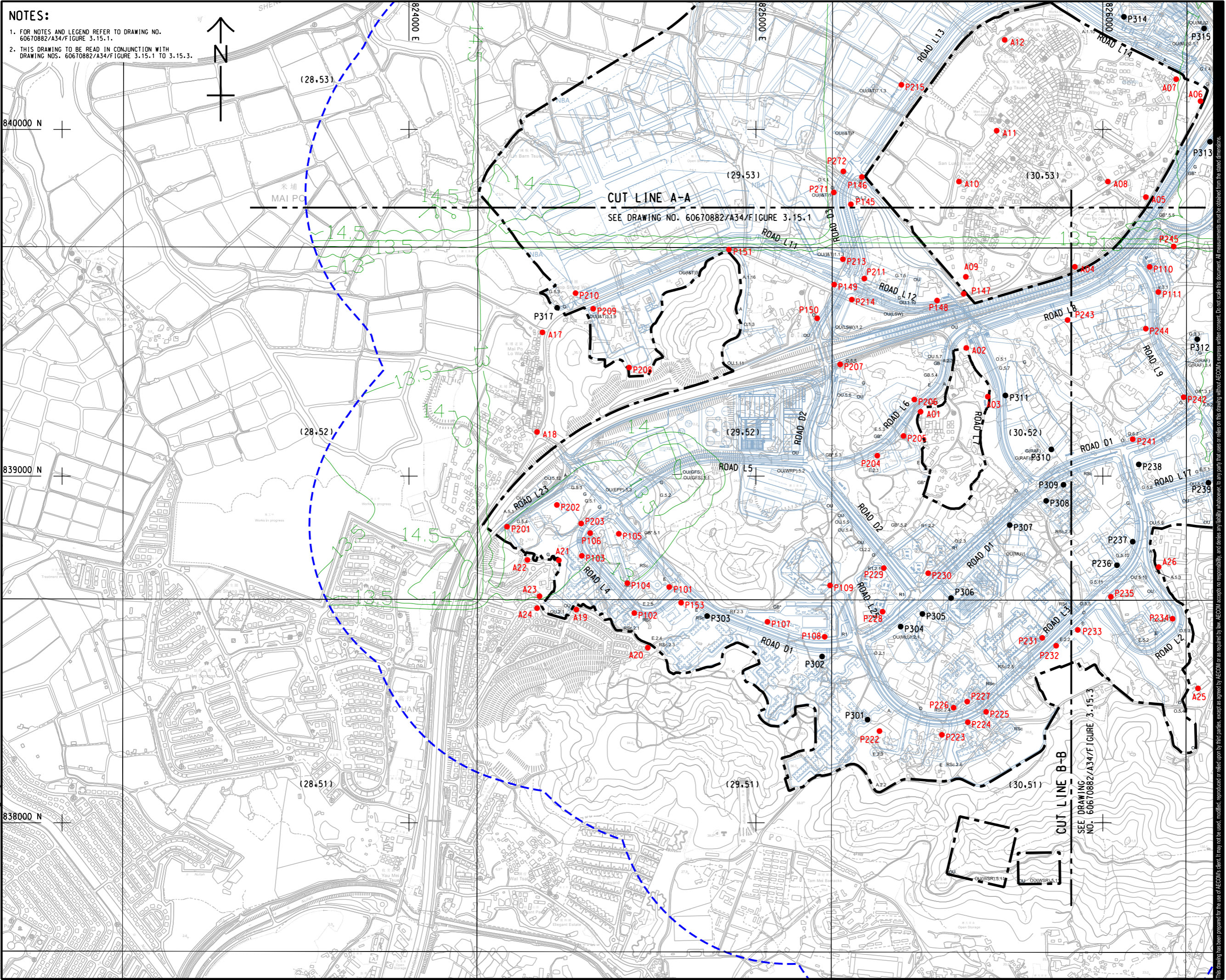
SHEET TITLE
 圖紙名稱
 CONTOUR OF PREDICTED 4TH HIGHEST CUMULATIVE DAILY SO2 CONCENTRATION AT 1.5 mAG (UG/m3) (YEAR 2031 AND 2034)

SHEET NUMBER
 圖紙編號
 60670882/A34/FIGURE 3.15.1

SHEET 1 OF 3

This drawing has been prepared for the use of AECOM's client. It may not be used, modified, reproduced or relied upon by third parties, except as agreed by AECOM in writing. AECOM accepts no responsibility, and denies any liability whatsoever, to any party that assesses or relies on this drawing without AECOM's express written consent. All measurements must be obtained from the stated dimensions.

ISO A1 594mm x 841mm
 Approved:
 Checked:
 Designer:
 Project Management Initials:
 Photo by: Yuxuan, the 11/30/2023
 PATH: P:\PROJECTS\60670882\DRAWINGREPORT\A34\A34_451.dgn



NOTES:

- FOR NOTES AND LEGEND REFER TO DRAWING NO. 60670882/A34/Figure 3.15.1.
- THIS DRAWING TO BE READ IN CONJUNCTION WITH DRAWING NOS. 60670882/A34/Figure 3.15.1 TO 3.15.3.



PROJECT
 項目
FIRST PHASE DEVELOPMENT OF THE NEW TERRITORIES NORTH – SAN TIN / LOK MA CHAU DEVELOPMENT NODE – INVESTIGATION

CLIENT
 業主
 **土木工程拓展署**
 Civil Engineering and Development Department
 **規劃署**
 Planning Department

CONSULTANT
 顧問公司
 AECOM Asla Company Ltd.
 www.aecom.com

SUB-CONSULTANTS
 分判工程師/顧問公司

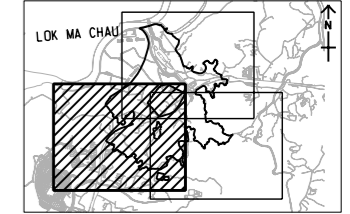
ISSUE/REVISION
 修訂

I/R	DATE	DESCRIPTION	CHK.

STATUS
 階段

SCALE **DIMENSION UNIT**
 比例 尺寸單位
 A3 1: 10000 METRES

KEY PLAN A3 1: 200000



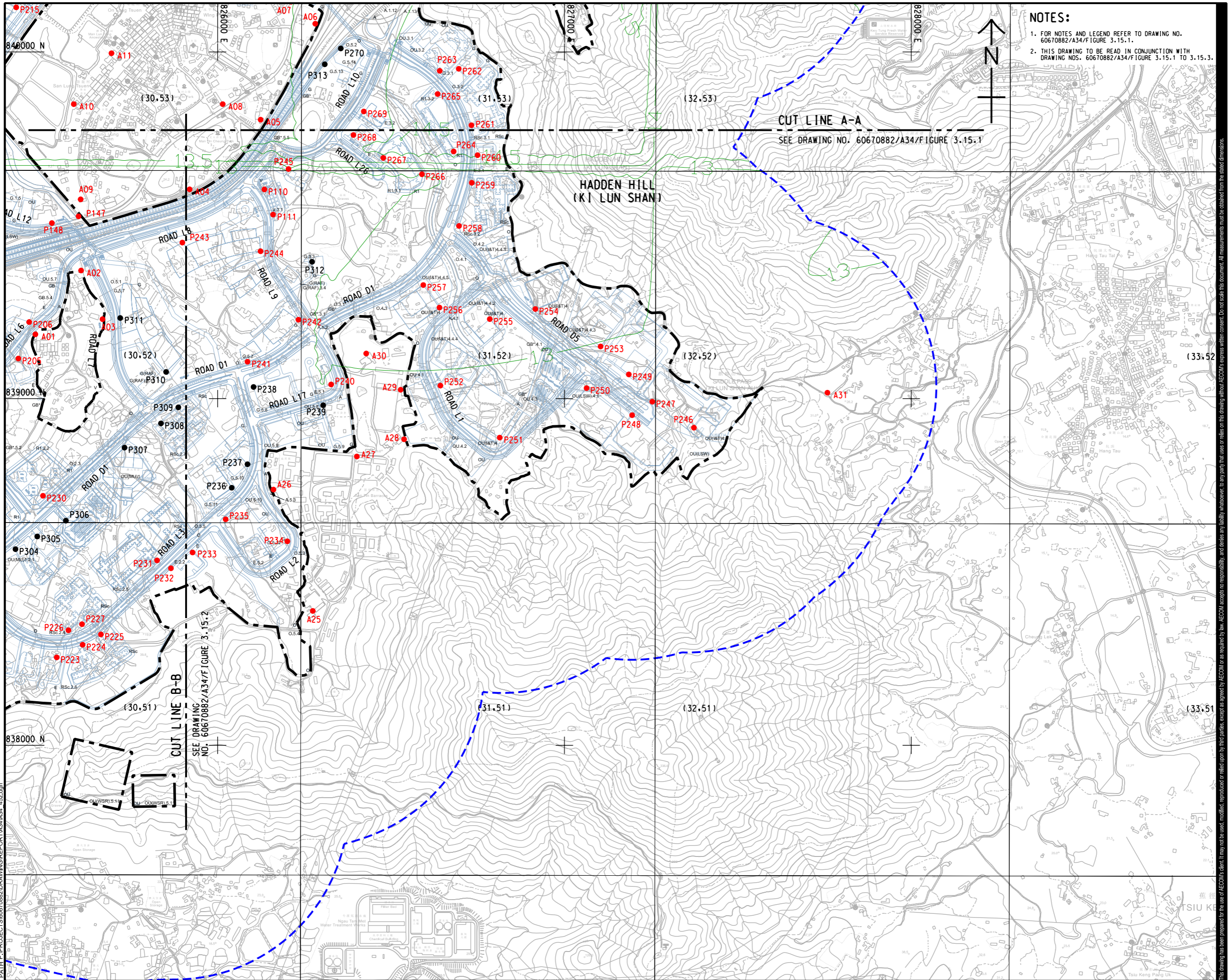
PROJECT NO. **AGREEMENT NO.**
 項目編號 協議編號
 60670882 CE 20/2021

SHEET TITLE
 圖紙名稱
 CONTOUR OF PREDICTED 4TH HIGHEST CUMULATIVE DAILY SO2 CONCENTRATION AT 1.5 mg (ug/m3) (YEAR 2031 AND 2034)
 SHEET 2 OF 3

SHEET NUMBER
 圖紙編號
 60670882/A34/FIGURE 3.15.2

This drawing has been prepared for the use of AECOM's client. It may not be used, modified, reproduced or relied upon by third parties, except as agreed by AECOM in writing. AECOM accepts no responsibility, and denies any liability whatsoever, to any party that assesses or relies on this drawing without AECOM's express written consent. All measurements must be obtained from the stated dimensions.

ISO A1 594mm x 841mm
 Approved:
 Checked:
 Designer:
 Project Management Initials:
 Plot File by: Yuxuan, He 11/30/2023
 PATH: P:\PROJECTS\60670882\DRAWING\REPORT\A34\A34_452.dgn
 This drawing has been prepared for the use of AECOM's client. It may not be used, modified, reproduced or relied upon by third parties, except as agreed by AECOM or as required by law. AECOM accepts no responsibility, and denies any liability whatsoever, for any party that assesses or relies on this drawing without AECOM's express written consent. All measurements must be obtained from the stated dimensions.



NOTES:

- FOR NOTES AND LEGEND REFER TO DRAWING NO. 60670882/A34/FIGURE 3.15.1.
- THIS DRAWING TO BE READ IN CONJUNCTION WITH DRAWING NOS. 60670882/A34/FIGURE 3.15.1 TO 3.15.3.

CUT LINE A-A
SEE DRAWING NO. 60670882/A34/FIGURE 3.15.1

CUT LINE B-B
SEE DRAWING NO. 60670882/A34/FIGURE 3.15.2

AECOM

PROJECT
 項目
FIRST PHASE DEVELOPMENT OF THE NEW TERRITORIES NORTH – SAN TIN / LOK MA CHAU DEVELOPMENT NODE – INVESTIGATION

CLIENT
 業主
CEDD 土木工程拓展署
 Civil Engineering and Development Department
規劃署
 Planning Department

CONSULTANT
 顧問公司
AECOM Asla Company Ltd.
 www.aecom.com

SUB-CONSULTANTS
 分判工程師/公司

ISSUE/REVISION
 修訂

I/R	DATE	DESCRIPTION	CHK.

STATUS
 階段

SCALE 比例
 A3 1:10000

DIMENSION UNIT 尺寸單位
 METRES

KEY PLAN 索引圖
 A3 1:20000

PROJECT NO. 項目編號
60670882

AGREEMENT NO. 協議編號
CE 20/2021

SHEET TITLE 圖紙名稱
 CONTOUR OF PREDICTED 4TH HIGHEST CUMULATIVE DAILY SO2 CONCENTRATION AT 1.5 mAg (UG/m3) (YEAR 2031 AND 2034)

SHEET NUMBER 圖紙編號
60670882/A34/FIGURE 3.15.3

SHEET 3 OF 3