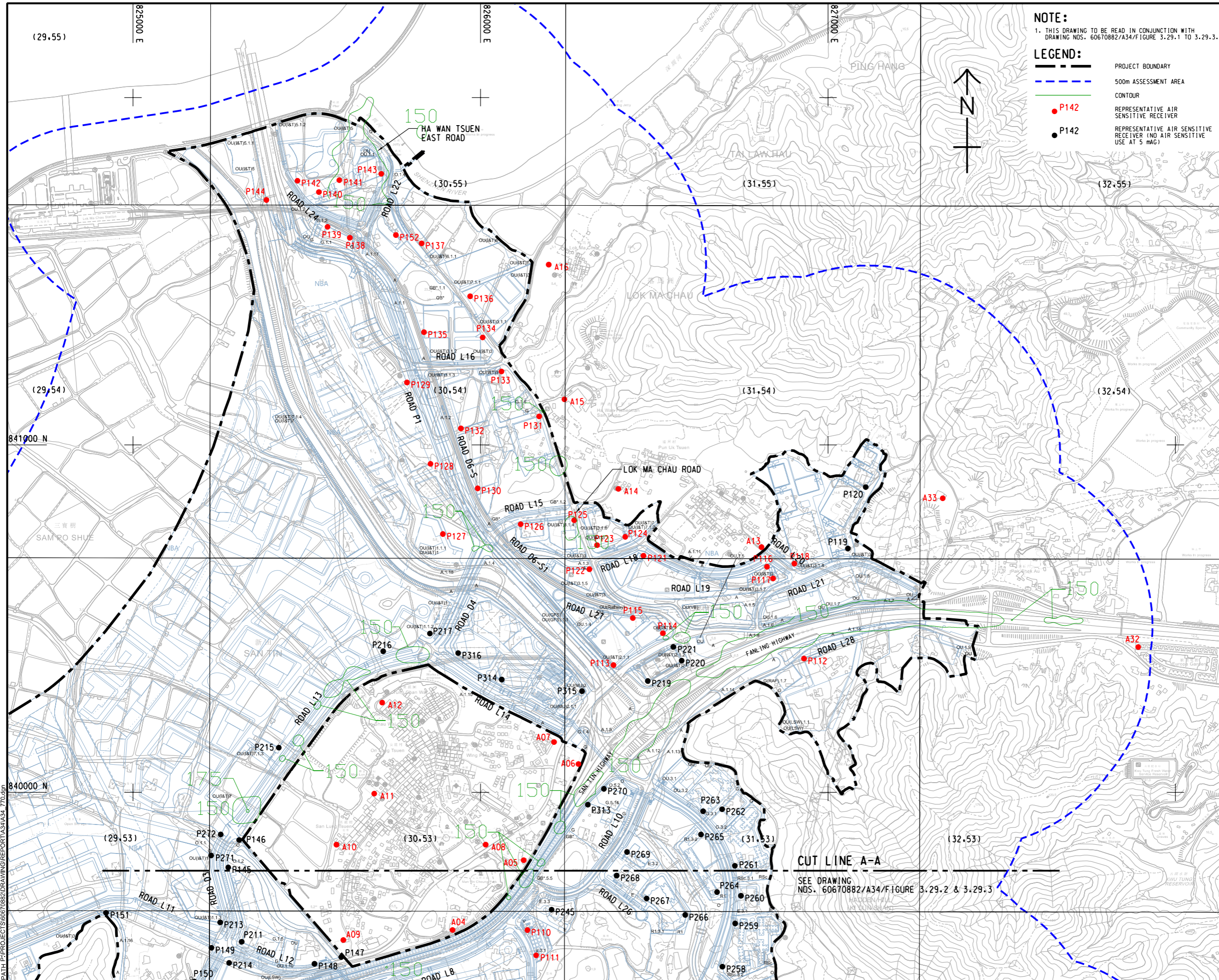


ISO A1 594mm x 841mm
Approved:
Checked:
Designer:
Project Management Initials:



NOTE:
1. THIS DRAWING TO BE READ IN CONJUNCTION WITH DRAWING NOS. 60670882/A34/FIGURE 3.29.1 TO 3.29.3.

LEGEND:

- PROJECT BOUNDARY
- 500m ASSESSMENT AREA
- CONTOUR
- P142 REPRESENTATIVE AIR SENSITIVE RECEIVER
- P142 REPRESENTATIVE AIR SENSITIVE RECEIVER (NO AIR SENSITIVE USE AT 5 mAG)



AECOM

PROJECT
FIRST PHASE DEVELOPMENT OF THE NEW TERRITORIES NORTH – SAN TIN / LOK MA CHAU DEVELOPMENT NODE – INVESTIGATION

CLIENT
 土木工程拓展署
Civil Engineering and Development Department
 規劃署
Planning Department

CONSULTANT
AECOM Asia Company Ltd.
www.aecom.com

SUB-CONSULTANTS

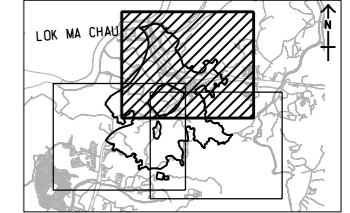
ISSUE/REVISION

NO.	DATE	DESCRIPTION	CHK.

STATUS

SCALE **DIMENSION UNIT**
A3 1:10000 METRES

KEY PLAN A3 1:200000



PROJECT NO. **AGREEMENT NO.**
60670882 CE 20/2021

SHEET TITLE
CONTOUR OF PREDICTED 19TH HIGHEST CUMULATIVE HOURLY NO2 CONCENTRATION AT 5 mAG (ug/m3) (YEAR 2031) SHEET 1 OF 3

SHEET NUMBER
60670882/A34/FIGURE 3.29.1

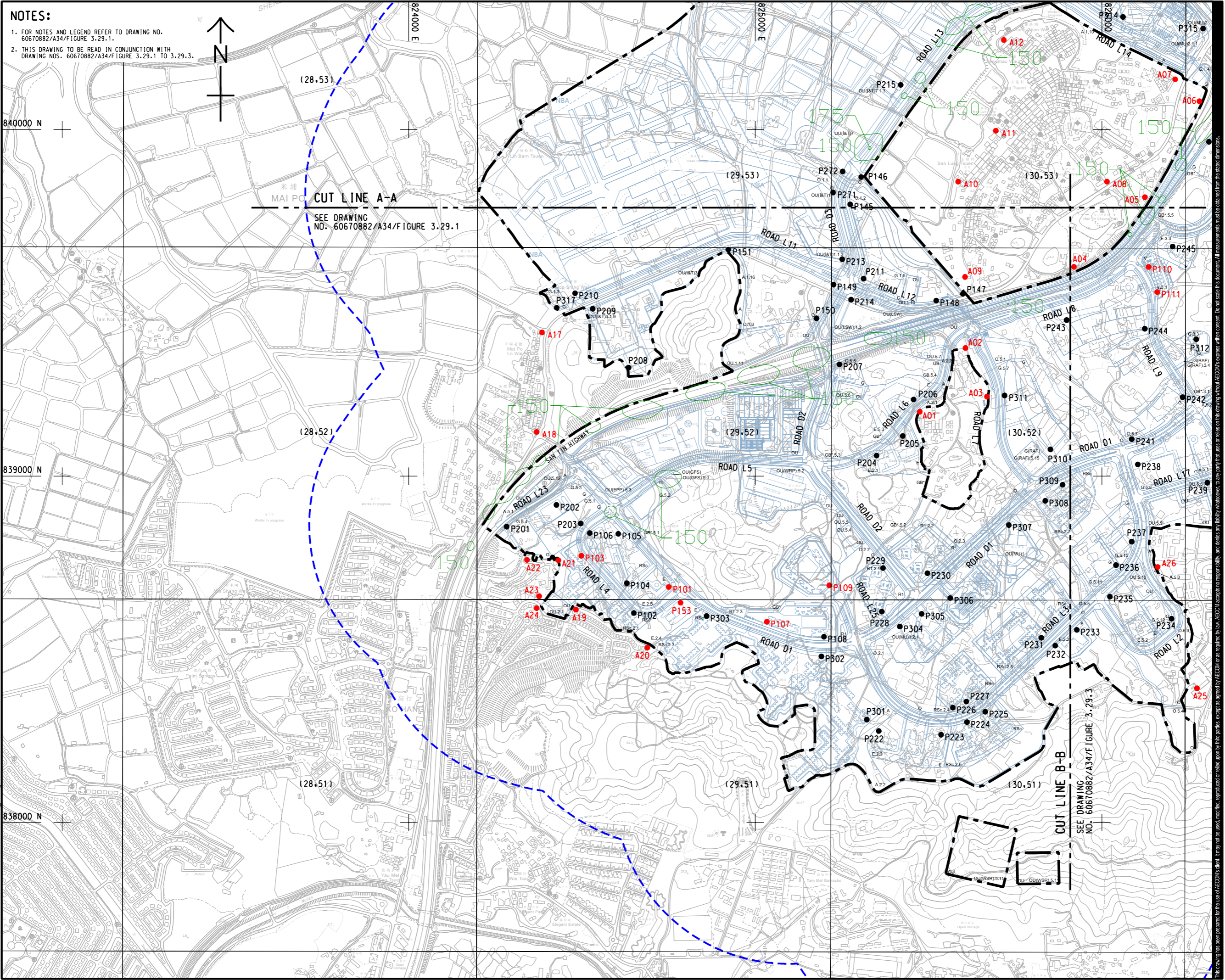
This drawing has been prepared for the use of AECOM's client. It may not be used, modified, reproduced or relied upon by third parties, except as agreed by AECOM or as required by law. AECOM accepts no responsibility, and disclaims any liability, whatsoever, for any part, in excess or in addition, of the scope of work defined in the contract. All measurements must be obtained from the stated dimensions.

Plot File by: YueFB
DATE: 13/12/2024
PATH: P:\PROJECTS\60670882\DRAWING\REPORT\A34\A34_770.dwg

ISO A1 594mm x 841mm
 Approved:
 Checked:
 Designer:
 Project Management Initials:
 Plot File by: YueFB
 PATH: P:\PROJECTS\60670882\DRAWING\REPORT\A3\A34_771.dgn

NOTES:

- FOR NOTES AND LEGEND REFER TO DRAWING NO. 60670882/A34/Figure 3.29.1.
- THIS DRAWING TO BE READ IN CONJUNCTION WITH DRAWING NOS. 60670882/A34/Figure 3.29.1 TO 3.29.3.



PROJECT
 項目
FIRST PHASE DEVELOPMENT OF THE NEW TERRITORIES NORTH – SAN TIN / LOK MA CHAU DEVELOPMENT NODE – INVESTIGATION

CLIENT
 業主
 **土木工程拓展署**
 Civil Engineering and Development Department
 **規劃署**
 Planning Department

CONSULTANT
 顧問公司
 AECOM Asia Company Ltd.
 www.aecom.com

SUB-CONSULTANTS
 分包工程師/顧問公司

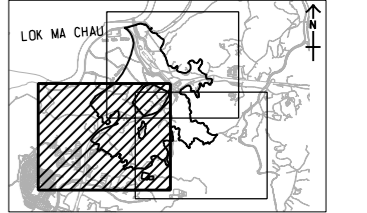
ISSUE/REVISION
 修訂

IR	DATE	DESCRIPTION	CHK.

STATUS
 階段

SCALE **DIMENSION UNIT**
 比例 尺寸單位
 A3 1: 10000 METRES

KEY PLAN A3 1: 200000
 索引圖



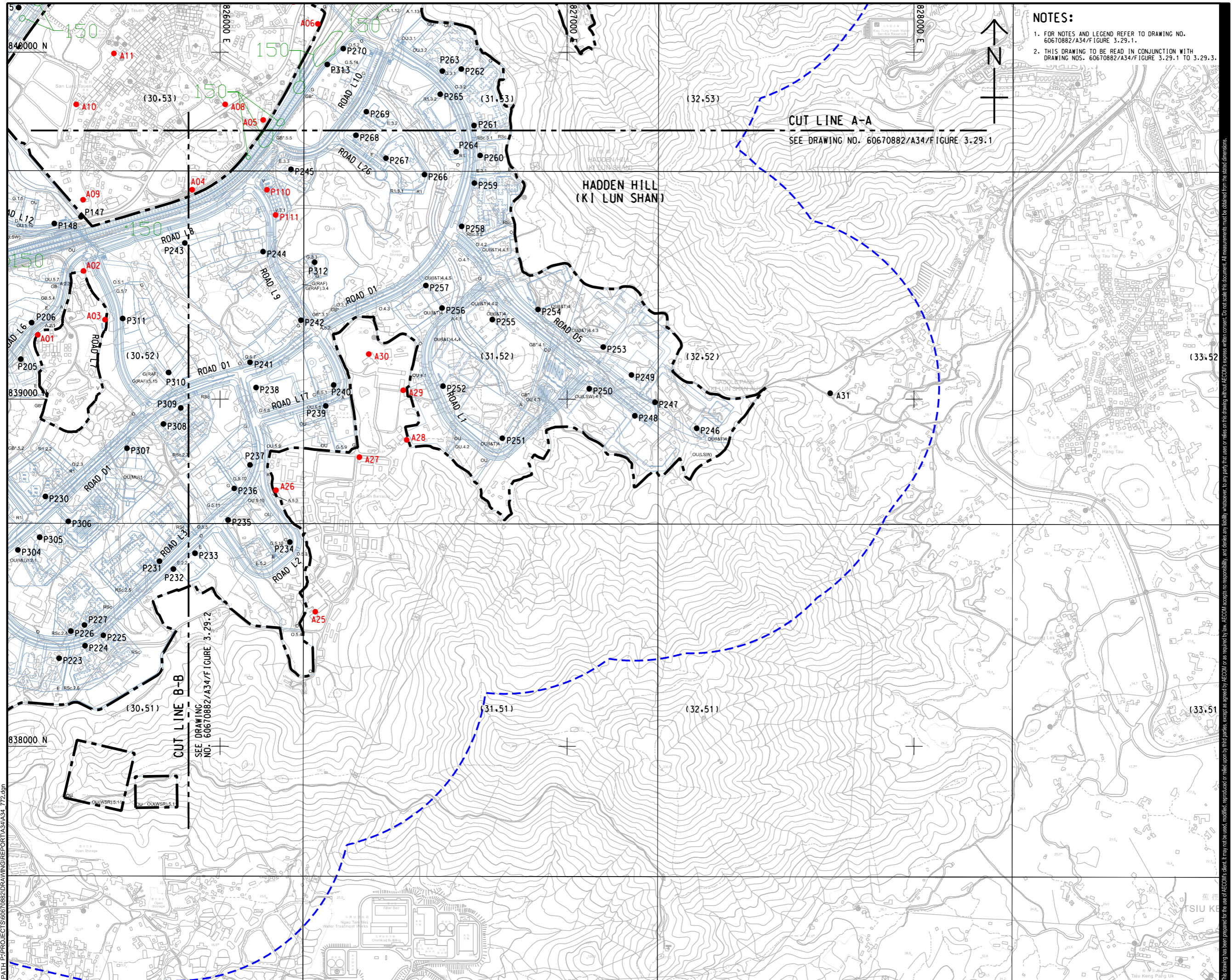
PROJECT NO. **AGREEMENT NO.**
 項目編號 協議編號
 60670882 CE 20/2021

SHEET TITLE
 圖紙名稱
CONTOUR OF PREDICTED 19TH HIGHEST CUMULATIVE HOURLY NO2 CONCENTRATION AT 5 mAG (ug/m3) (YEAR 2031) SHEET 2 OF 3

SHEET NUMBER
 圖紙編號
 60670882/A34/FIGURE 3.29.2

This drawing has been prepared for the use of AECOM's client. It may not be used, modified, reproduced or relied upon by third parties, except as agreed by AECOM in writing. AECOM accepts no responsibility, and disclaims any liability whatsoever, for any gain, loss or damage on this drawing without AECOM's express written consent. All measurements must be obtained from the stated dimensions.

ISO A1 594mm x 841mm
 Approved:
 Checked:
 Designer:
 Project Management Initials:



NOTES:
 1. FOR NOTES AND LEGEND REFER TO DRAWING NO. 60670882/A34/Figure 3.29.1.
 2. THIS DRAWING TO BE READ IN CONJUNCTION WITH DRAWING NOS. 60670882/A34/Figure 3.29.1 TO 3.29.3.

CUT LINE A-A
 SEE DRAWING NO. 60670882/A34/Figure 3.29.1

CUT LINE B-B
 SEE DRAWING NO. 60670882/A34/Figure 3.29.2

AECOM
 PROJECT
FIRST PHASE DEVELOPMENT OF THE NEW TERRITORIES NORTH – SAN TIN / LOK MA CHAU DEVELOPMENT NODE – INVESTIGATION

CLIENT
 土木 工程 拓展 署
CEDD Civil Engineering and Development Department
 規 劃 署
Planning Department

CONSULTANT
 AECOM Asia Company Ltd.
 www.aecom.com

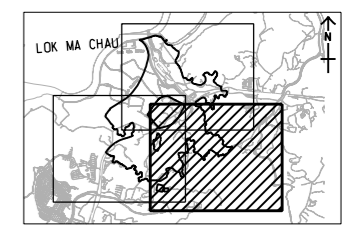
SUB-CONSULTANTS

ISSUE/REVISION

IR	DATE	DESCRIPTION	CHK.

STATUS

SCALE **DIMENSION UNIT**
 A3 1:10000 METRES



PROJECT NO. **AGREEMENT NO.**
 60670882 CE 20/2021

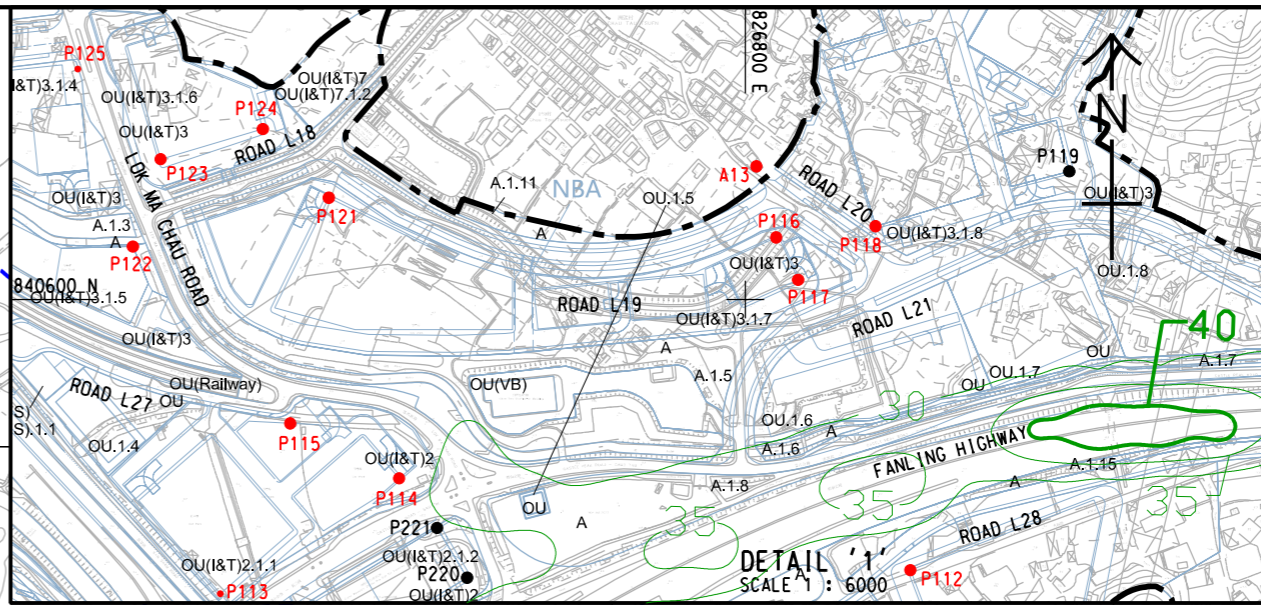
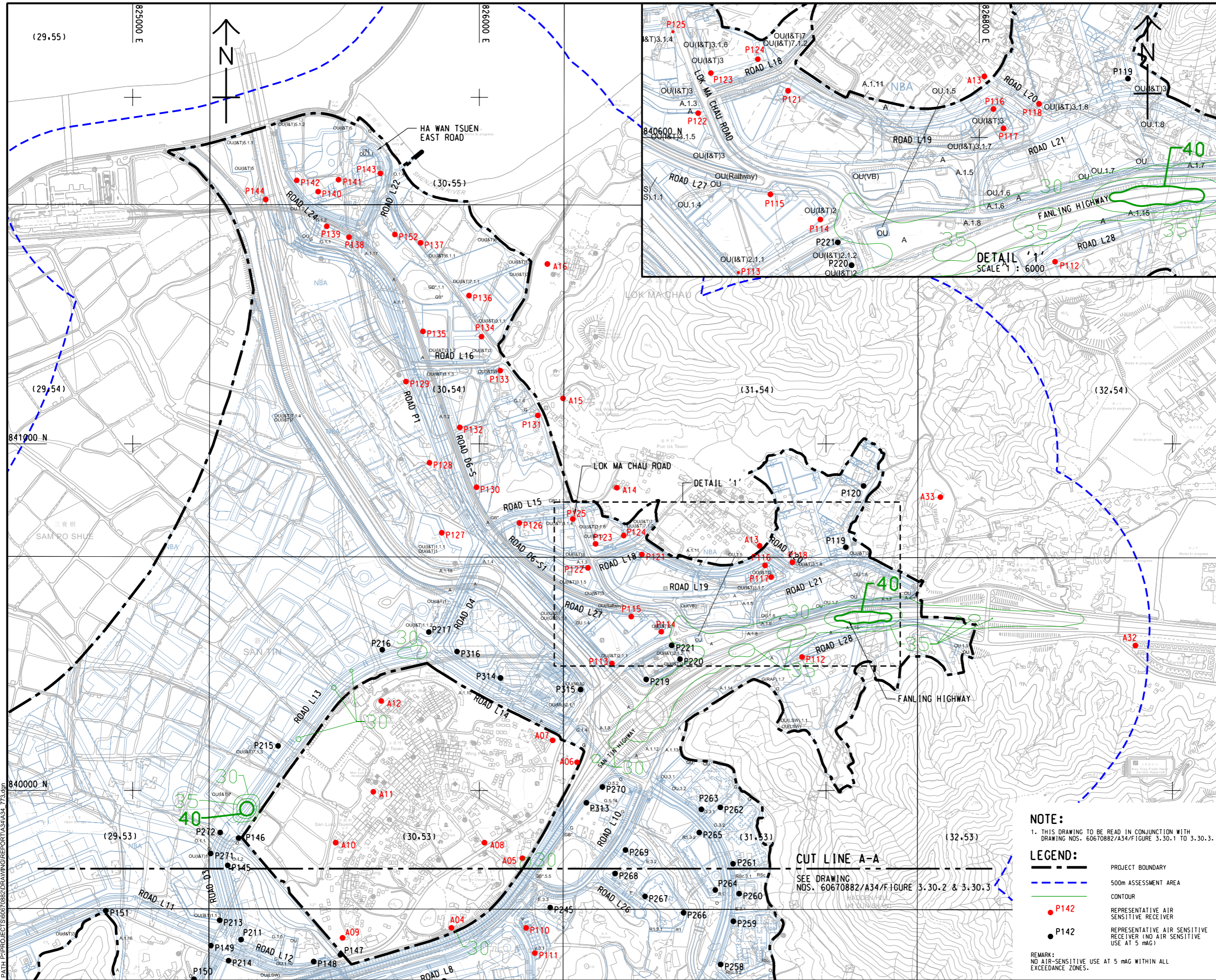
SHEET TITLE
 CONTOUR OF PREDICTED 19TH HIGHEST CUMULATIVE HOURLY NO2 CONCENTRATION AT 5 mAG (ug/m3) (YEAR 2031) SHEET 3 OF 3

SHEET NUMBER
 60670882/A34/FIGURE 3.29.3

This drawing has been prepared for the use of AECOM's client. It may not be used, modified, reproduced or relied upon by third parties, except as agreed by AECOM or as required by law. AECOM accepts no responsibility, and disclaims any liability, whatsoever, for any part, that, in or on this drawing, without AECOM's express written consent. All measurements must be obtained from the stated dimensions.

Plot File by: YueFB
 PATH: P:\PROJECTS\60670882\DRAWING\REPORT\A34\A34_772.dgn
 13/11/2024

ISO A1 594mm x 841mm
Approved:
Checked:
Designer:
Project Management Initials:



PROJECT
 項目
 FIRST PHASE DEVELOPMENT OF
 THE NEW TERRITORIES NORTH –
 SAN TIN / LOK MA CHAU
 DEVELOPMENT NODE –
 INVESTIGATION

CLIENT
 業主
 土木工程拓展署
 Civil Engineering and
 Development Department
 規劃署
 Planning Department

CONSULTANT
 工程顧問公司
 AECOM Asia Company Ltd.
 www.aecom.com

SUB-CONSULTANTS
 分判工程顧問公司

ISSUE/REVISION
 修訂

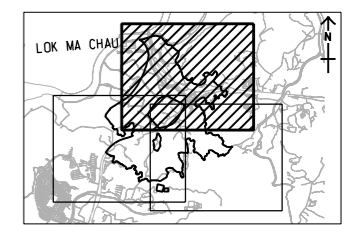
IR	DATE	DESCRIPTION	CHK.

STATUS
 階段

SCALE
 比例
 A3 1:10000






DIMENSION UNIT
 尺寸單位
 METRES

KEY PLAN A3 1:20000
 索引圖



NOTE:
 1. THIS DRAWING TO BE READ IN CONJUNCTION WITH
 DRAWING NOS. 60670882/A34/FIGURE 3.30.1 TO 3.30.3.

LEGEND:

-  PROJECT BOUNDARY
-  500m ASSESSMENT AREA
-  CONTOUR
-  P142 REPRESENTATIVE AIR SENSITIVE RECEIVER
-  P142 REPRESENTATIVE AIR SENSITIVE RECEIVER (NO AIR SENSITIVE USE AT 5 mAg)

REMARK:
 NO AIR-SENSITIVE USE AT 5 mAg WITHIN ALL
 EXCEEDANCE ZONES.

PROJECT NO.
 項目編號
 60670882

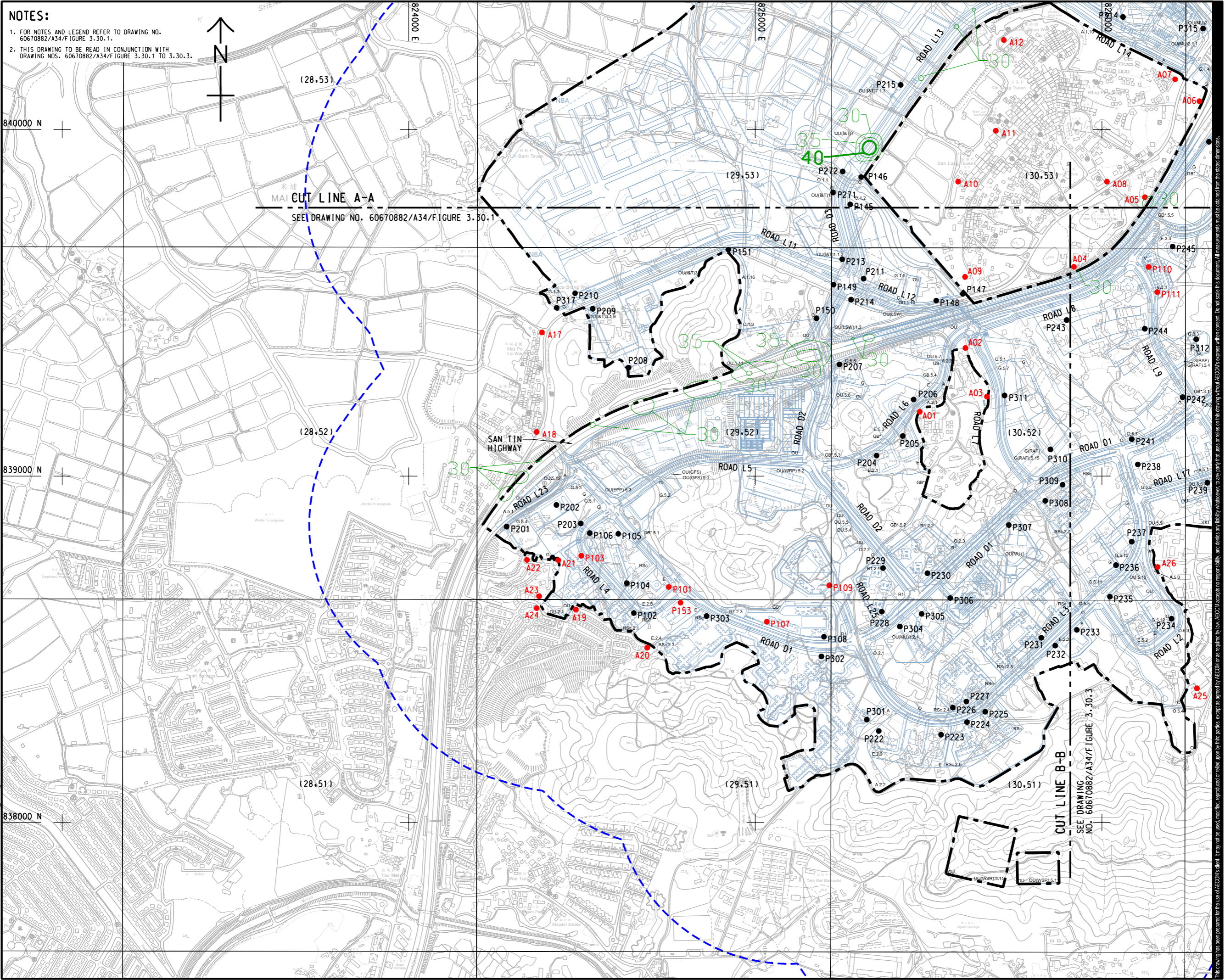
AGREEMENT NO.
 協議編號
 CE 20/2021

SHEET TITLE
 圖則名稱
 CONTOUR OF PREDICTED
 CUMULATIVE ANNUAL NO2
 CONCENTRATION AT 5 mAg
 (ug/m3) (YEAR 2031) SHEET 1 OF 3

SHEET NUMBER
 圖則編號
 60670882/A34/FIGURE 3.30.1

This drawing has been prepared for the use of AECOM's client. It may not be used, modified, reproduced or relied upon by third parties, except as agreed by AECOM or as required by law. AECOM accepts no responsibility, and disclaims any liability, whatsoever, for any part, that uses or relies on this drawing without AECOM's express written consent. All measurements must be obtained from the stated dimensions.

ISO A1 594mm x 841mm
Approved:
Checked:
Designer:
Project Management Initials:
Plot File by: YueFB
PATH P:\PROJECTS\60670882\DRAWING\REPORT\A3\A34_774.dgn



NOTES:
1. FOR NOTES AND LEGEND REFER TO DRAWING NO. 60670882/A34/Figure 3.30.1.
2. THIS DRAWING TO BE READ IN CONJUNCTION WITH DRAWING NOS. 60670882/A34/Figure 3.30.1 TO 3.30.3.

CUT LINE A-A
SEE DRAWING NO. 60670882/A34/Figure 3.30.1

CUT LINE B-B
SEE DRAWING NO. 60670882/A34/Figure 3.30.3



PROJECT
FIRST PHASE DEVELOPMENT OF THE NEW TERRITORIES NORTH – SAN TIN / LOK MA CHAU DEVELOPMENT NODE – INVESTIGATION

CLIENT
 土木工程拓展署
Civil Engineering and Development Department
 規劃署
Planning Department

CONSULTANT
AECOM Asia Company Ltd.
www.aecom.com

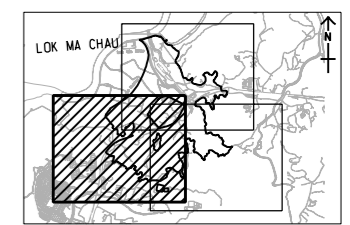
SUB-CONSULTANTS

ISSUE/REVISION			
IR	DATE	DESCRIPTION	CHK.

STATUS

SCALE A3 1:10000
DIMENSION UNIT METRES

KEY PLAN A3 1:200000



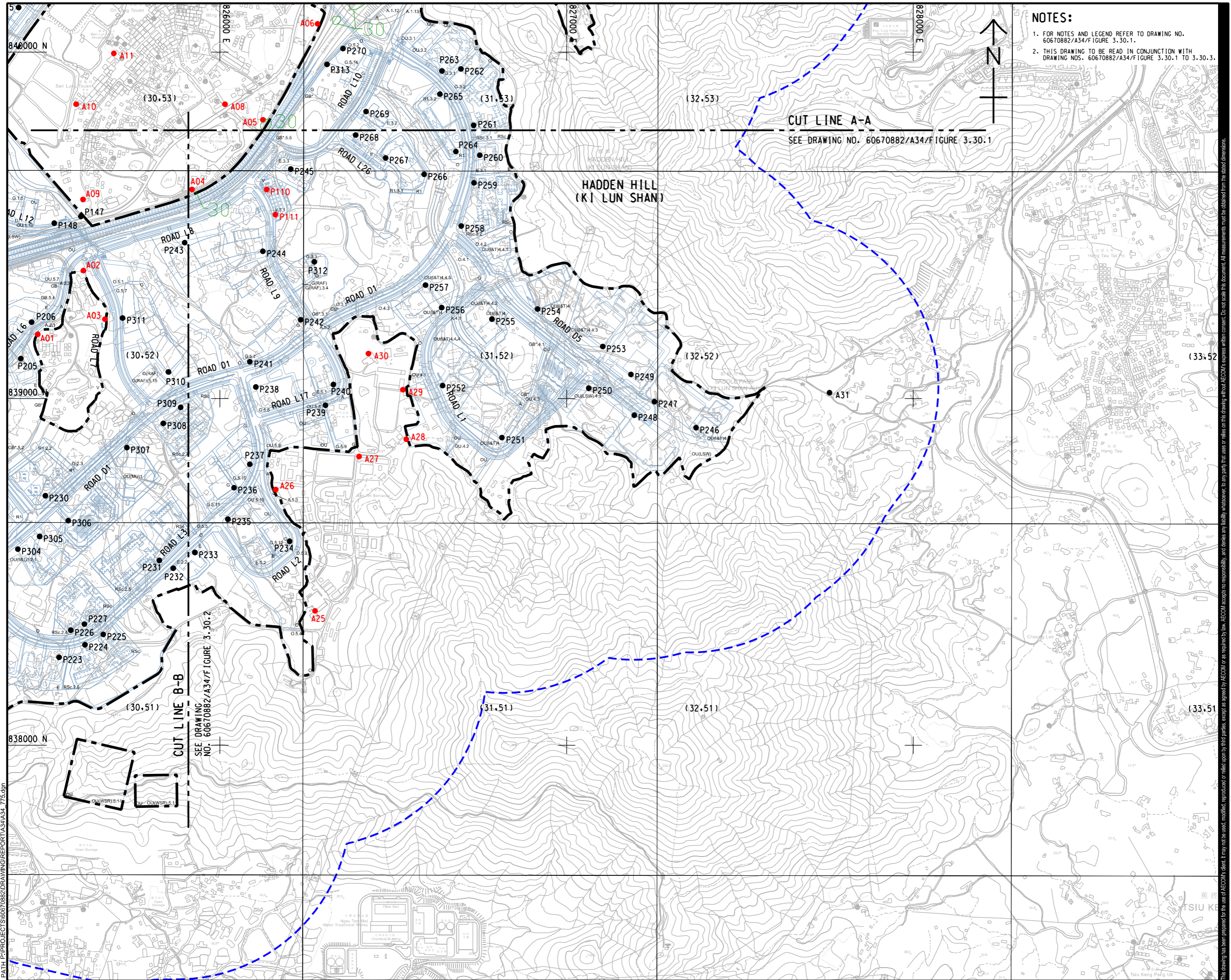
PROJECT NO. 60670882
AGREEMENT NO. CE 20/2021

SHEET TITLE
CONTOUR OF PREDICTED CUMULATIVE ANNUAL NO2 CONCENTRATION AT 5 m AGL (ug/m3) (YEAR 2031) SHEET 2 OF 3

SHEET NUMBER
60670882/A34/FIGURE 3.30.2

This drawing has been prepared for the use of AECOM's client. It may not be used, modified, reproduced or relied upon by third parties, except as agreed by AECOM in writing. AECOM accepts no responsibility, and disclaims any liability, whatsoever, for any error, omission or delay in this drawing without AECOM's express written consent. All measurements must be obtained from the stated dimensions.

ISO A1 594mm x 841mm
 Approved:
 Checked:
 Designer:
 Project Management Initials:
 Plot File by: YueFB
 PATH: P:\PROJECTS\60670882\DRAWING\REPORT\A3\A34_775.dgn



NOTES:
 1. FOR NOTES AND LEGEND REFER TO DRAWING NO. 60670882/A34/FIGURE 3.30.1.
 2. THIS DRAWING TO BE READ IN CONJUNCTION WITH DRAWING NOS. 60670882/A34/FIGURE 3.30.1 TO 3.30.3.

CUT LINE A-A
 SEE DRAWING NO. 60670882/A34/FIGURE 3.30.1

CUT LINE B-B
 SEE DRAWING NO. 60670882/A34/FIGURE 3.30.2

AECOM
 PROJECT
 FIRST PHASE DEVELOPMENT OF THE NEW TERRITORIES NORTH – SAN TIN / LOK MA CHAU DEVELOPMENT NODE – INVESTIGATION

CLIENT
 土木工程拓展署
 Civil Engineering and Development Department
 規劃署
 Planning Department

CONSULTANT
 AECOM Asia Company Ltd.
 www.aecom.com

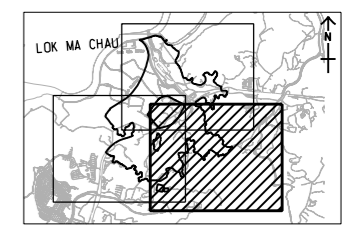
SUB-CONSULTANTS

ISSUE/REVISION

NO.	DATE	DESCRIPTION	CHK.

STATUS
 備案

SCALE
 比例
 A3 1:10000
DIMENSION UNIT
 尺寸單位
 METRES

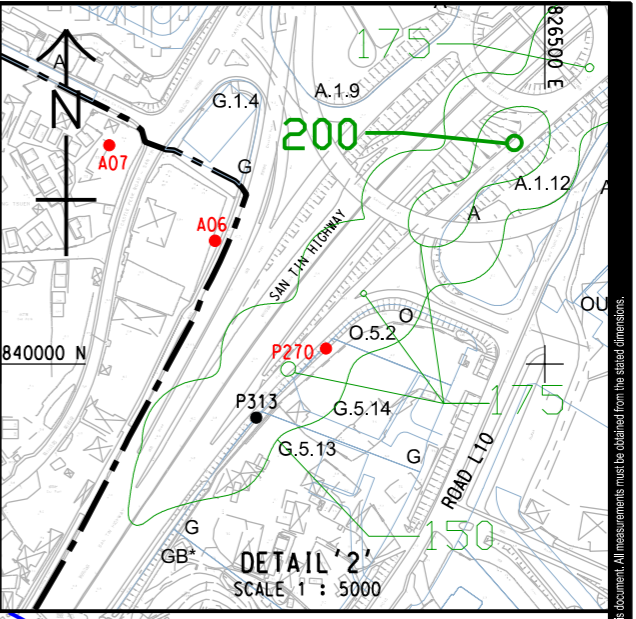
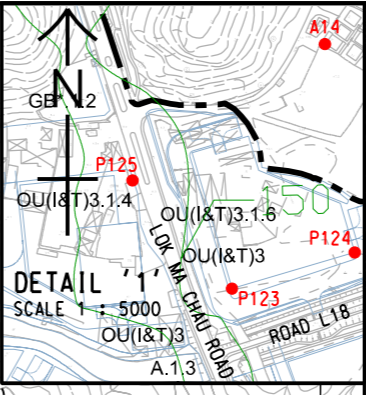
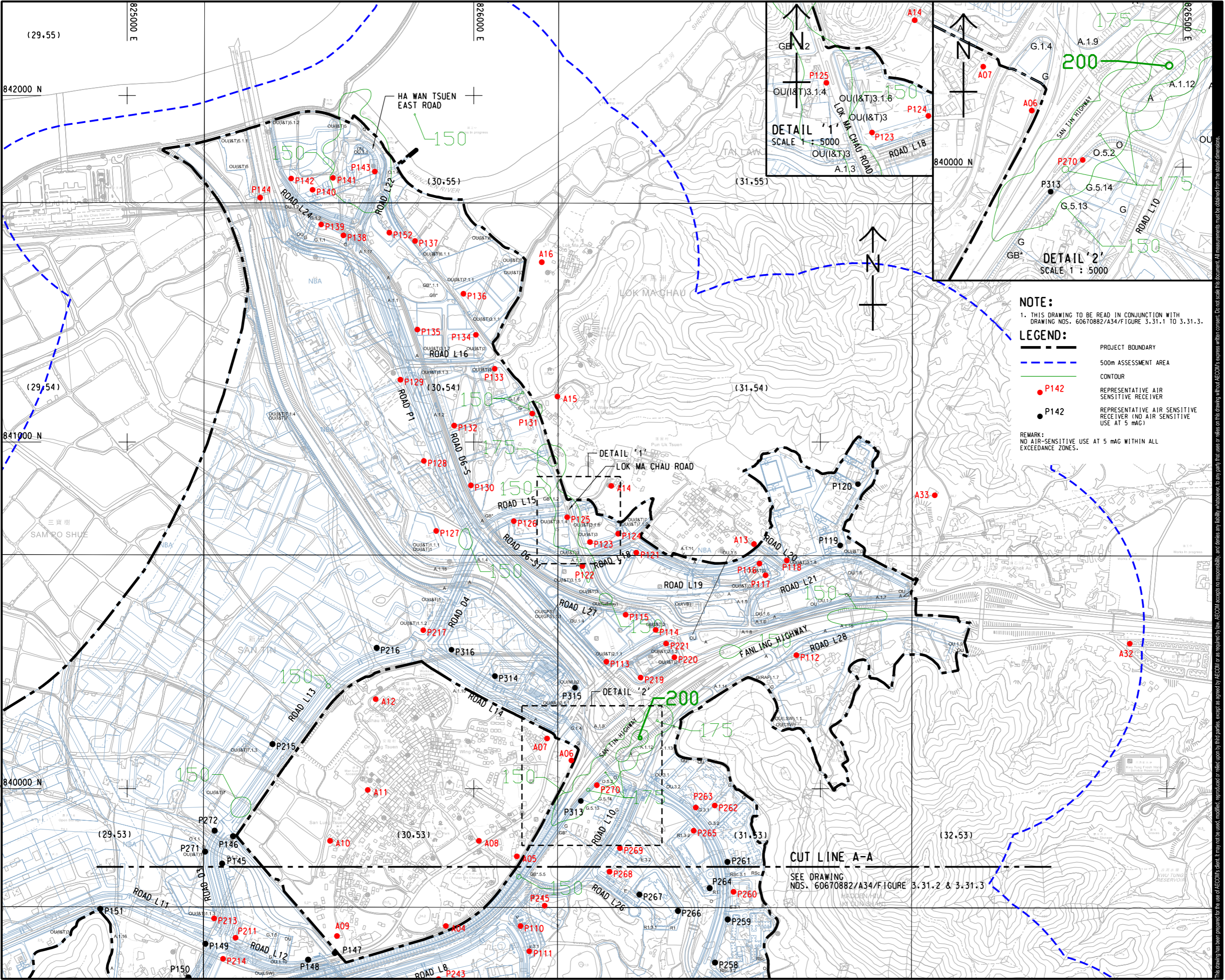


PROJECT NO.
 項目編號
 60670882
AGREEMENT NO.
 協議編號
 CE 20/2021

SHEET TITLE
 圖紙名稱
 CONTOUR OF PREDICTED CUMULATIVE ANNUAL NO2 CONCENTRATION AT 5 mAG (ug/m3) (YEAR 2031) SHEET 3 OF 3
SHEET NUMBER
 圖紙編號
 60670882/A34/FIGURE 3.30.3

This drawing has been prepared for the use of AECOM's client. It may not be used, modified, reproduced or relied upon by third parties, except as agreed by AECOM or as required by law. AECOM accepts no responsibility, and denies any liability, whatsoever, for any part, that, in or on this drawing, without AECOM's express written consent. All measurements must be obtained from the stated dimensions.

ISO A1 594mm x 841mm
 Approved:
 Checked:
 Designer:
 Project Management Initials:



NOTE:
 1. THIS DRAWING TO BE READ IN CONJUNCTION WITH DRAWING NOS. 60670882/A34/FIGURE 3.31.1 TO 3.31.3.

LEGEND:

- PROJECT BOUNDARY
- 500m ASSESSMENT AREA
- CONTOUR
- P142 REPRESENTATIVE AIR SENSITIVE RECEIVER
- P142 REPRESENTATIVE AIR SENSITIVE RECEIVER (NO AIR SENSITIVE USE AT 5 mAG)

REMARK:
 NO AIR-SENSITIVE USE AT 5 mAG WITHIN ALL EXCEEDANCE ZONES.



PROJECT
 項目
 FIRST PHASE DEVELOPMENT OF THE NEW TERRITORIES NORTH – SAN TIN / LOK MA CHAU DEVELOPMENT NODE – INVESTIGATION

CLIENT
 業主
 土木工程拓展署
 Civil Engineering and Development Department
 規劃署
 Planning Department

CONSULTANT
 工程顧問公司
 AECOM Asia Company Ltd.
 www.aecom.com

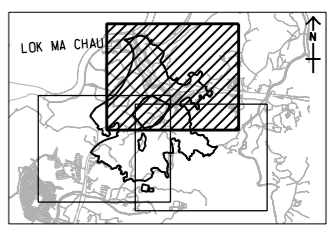
SUB-CONSULTANTS
 分門工程顧問公司

ISSUE/REVISION
 修訂

NO.	DATE	DESCRIPTION

STATUS
 階段

SCALE
 比例
 A3 1:10000
DIMENSION UNIT
 尺寸單位
 METRES



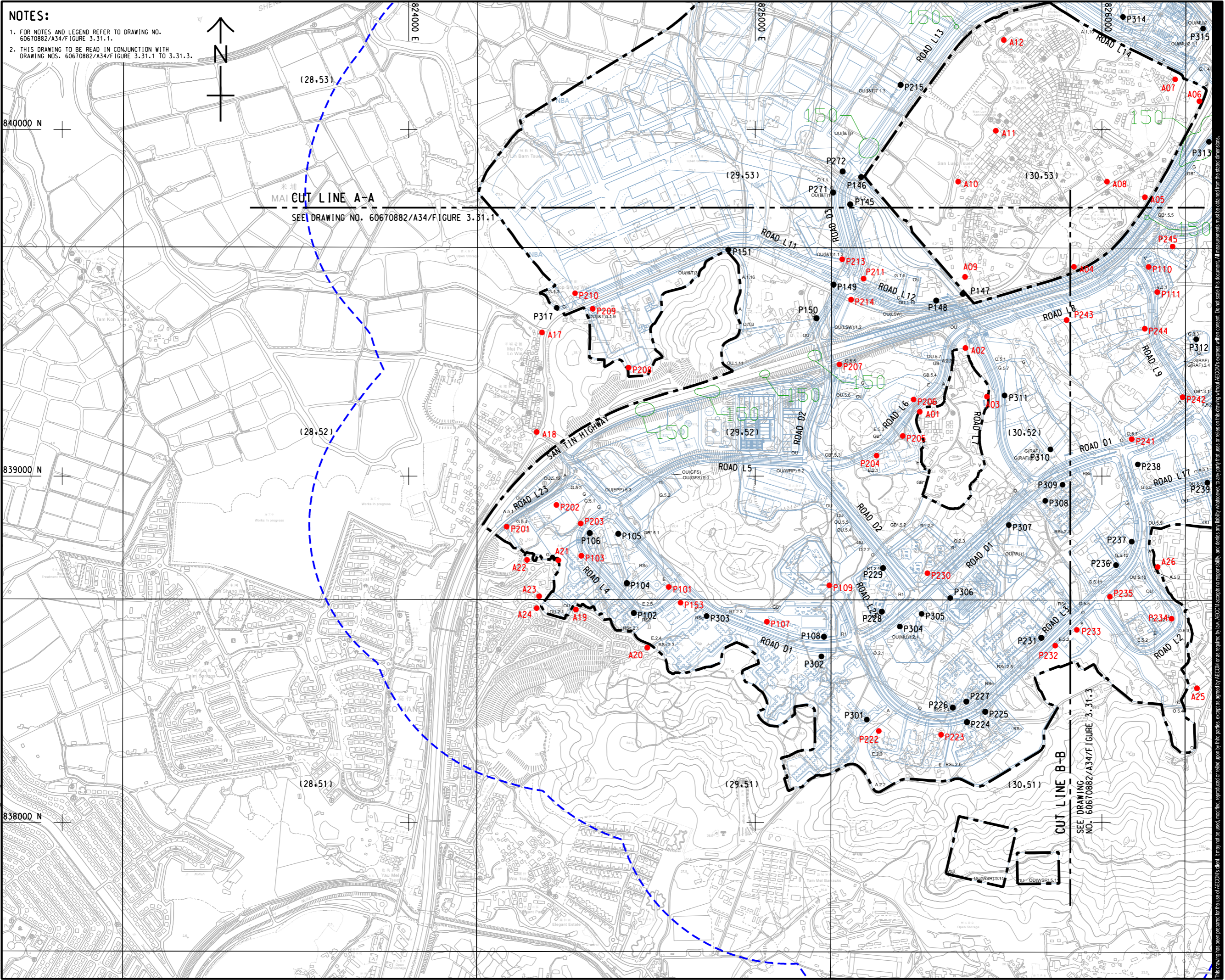
PROJECT NO.
 項目編號
 60670882
AGREEMENT NO.
 協議編號
 CE 20/2021

SHEET TITLE
 圖紙名稱
 CONTOUR OF PREDICTED 19TH HIGHEST CUMULATIVE HOURLY NO2 CONCENTRATION AT 5 mAG (ug/m3) (YEAR 2034) SHEET 1 OF 3
SHEET NUMBER
 圖紙編號
 60670882/A34/FIGURE 3.31.1

Plot File by: vicky.xia1
 1/16/2024
 PATH: P:\PROJECTS\60670882\DRAWING\REPORT\A34\A34_776.dgn

This drawing has been prepared for the use of AECOM's client. It may not be used, modified, reproduced or relied upon by third parties, except as agreed by AECOM or as required by law. AECOM accepts no responsibility, and disclaims any liability whatsoever, to any party, that uses or relies on this drawing without AECOM's express written consent. All measurements must be obtained from the stated dimensions.

ISO A1 594mm x 841mm
Approved:
Checked:
Designer:
Project Management Initials:
Plot File by: YueFB
PATH: P:\PROJECTS\60670882\DRAWING\REPORT\A3\A34_777.dgn
16/12/2024



NOTES:
 1. FOR NOTES AND LEGEND REFER TO DRAWING NO. 60670882/A34/Figure 3.31.1.
 2. THIS DRAWING TO BE READ IN CONJUNCTION WITH DRAWING NOS. 60670882/A34/Figure 3.31.1 TO 3.31.3.



CUT LINE A-A
 SEE DRAWING NO. 60670882/A34/Figure 3.31.1

CUT LINE B-B
 SEE DRAWING NO. 60670882/A34/Figure 3.31.3



PROJECT
 項目
FIRST PHASE DEVELOPMENT OF THE NEW TERRITORIES NORTH – SAN TIN / LOK MA CHAU DEVELOPMENT NODE – INVESTIGATION

CLIENT
 業主
 **土木工程拓展署**
 Civil Engineering and Development Department
 **規劃署**
 Planning Department

CONSULTANT
 顧問公司
 AECOM Asia Company Ltd.
 www.aecom.com

SUB-CONSULTANTS
 分包工程師/顧問公司

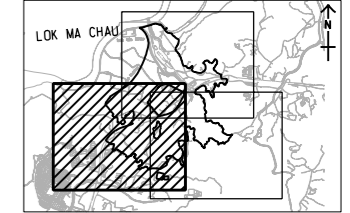
ISSUE/REVISION
 修訂

IR	DATE	DESCRIPTION	CHK.

STATUS
 階段

SCALE **DIMENSION UNIT**
 比例 尺寸單位
 A3 1: 10000 METRES

KEY PLAN A3 1: 200000
 索引圖



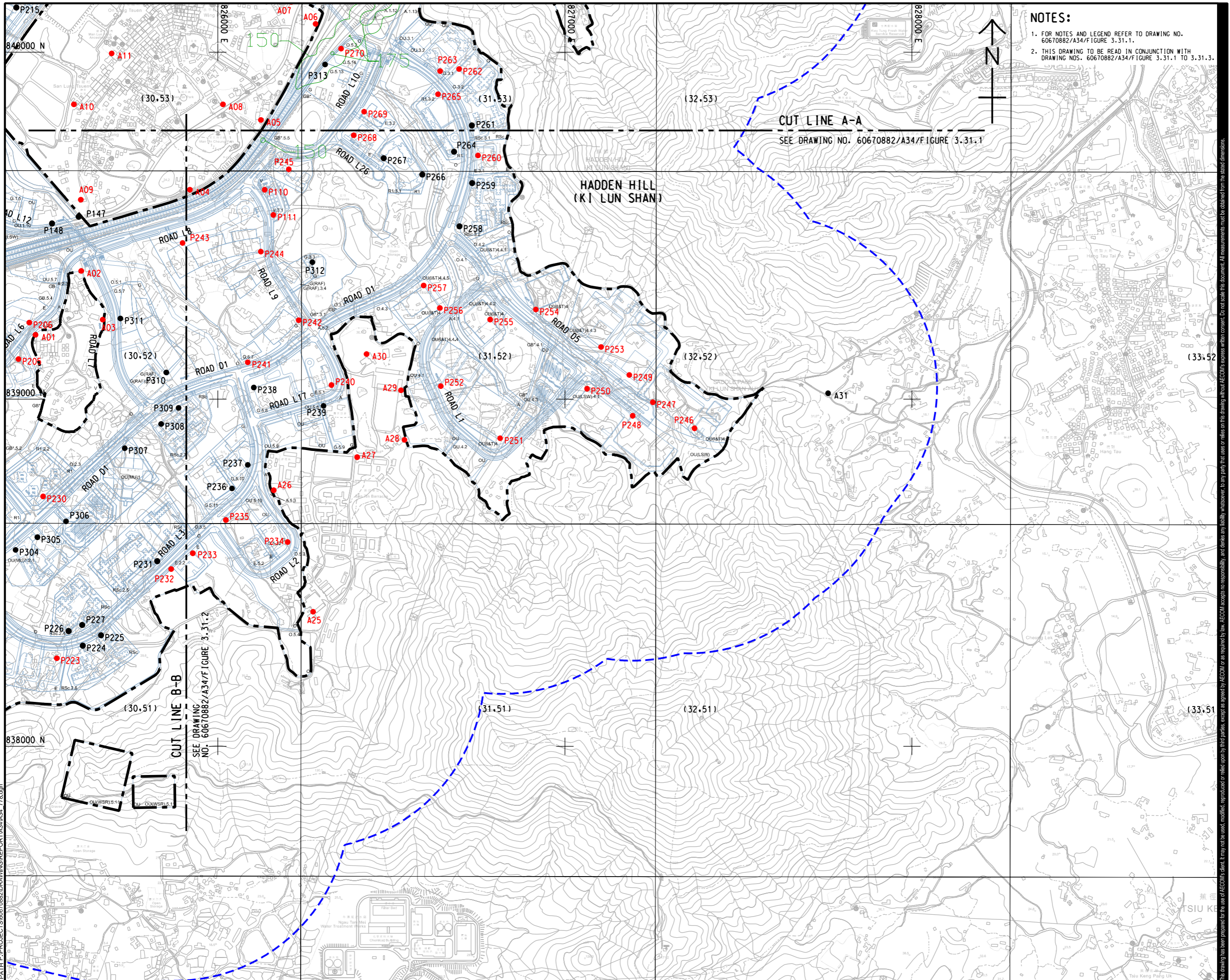
PROJECT NO. **AGREEMENT NO.**
 項目編號 協議編號
 60670882 CE 20/2021

SHEET TITLE
 圖紙名稱
CONTOUR OF PREDICTED 19TH HIGHEST CUMULATIVE HOURLY NO2 CONCENTRATION AT 5 MAG (ug/m3) (YEAR 2034) SHEET 2 OF 3

SHEET NUMBER
 圖紙編號
 60670882/A34/FIGURE 3.31.2

This drawing has been prepared for the use of AECOM's client. It may not be used, modified, reproduced or relied upon by third parties, except as agreed by AECOM or as required by law. AECOM accepts no responsibility, and disclaims any liability whatsoever, for any gain, loss or damage on this drawing without AECOM's express written consent. All measurements must be obtained from the stated dimensions.

ISO A1 594mm x 841mm
 Approved:
 Checked:
 Designer:
 Project Management Initials:
 1/16/2024
 PATH: P:\PROJECTS\60670882\DRAWING\REPORT\A34\A34_775.dgn
 Plot File by: vicky.xia1



NOTES:

- FOR NOTES AND LEGEND REFER TO DRAWING NO. 60670882/A34/FIGURE 3.31.1.
- THIS DRAWING TO BE READ IN CONJUNCTION WITH DRAWING NOS. 60670882/A34/FIGURE 3.31.1 TO 3.31.3.

CUT LINE A-A
SEE DRAWING NO. 60670882/A34/FIGURE 3.31.1

CUT LINE B-B
SEE DRAWING NO. 60670882/A34/FIGURE 3.31.2

AECOM

PROJECT
 項目
FIRST PHASE DEVELOPMENT OF THE NEW TERRITORIES NORTH – SAN TIN / LOK MA CHAU DEVELOPMENT NODE – INVESTIGATION

CLIENT
 業主
 **土木工程拓展署**
 Civil Engineering and Development Department
 **規劃署**
 Planning Department

CONSULTANT
 工程顧問公司
 AECOM Asia Company Ltd.
 www.aecom.com

SUB-CONSULTANTS
 分判工程顧問公司

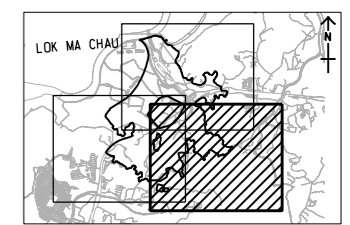
ISSUE/REVISION
 修訂

IR	DATE	DESCRIPTION	CHK.

STATUS
 階段

SCALE
 比例
 A3 1:10000

DIMENSION UNIT
 尺寸單位
 METRES



PROJECT NO.
 項目編號
 60670882

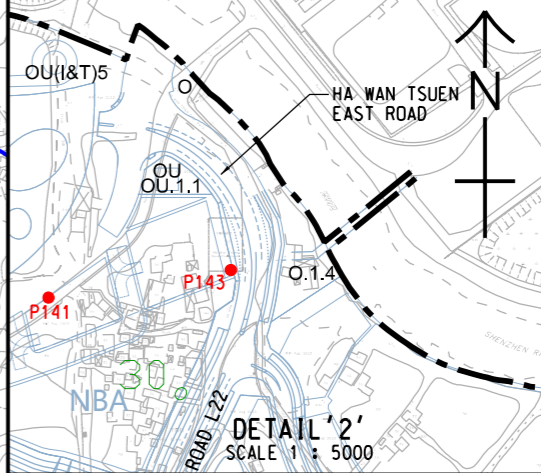
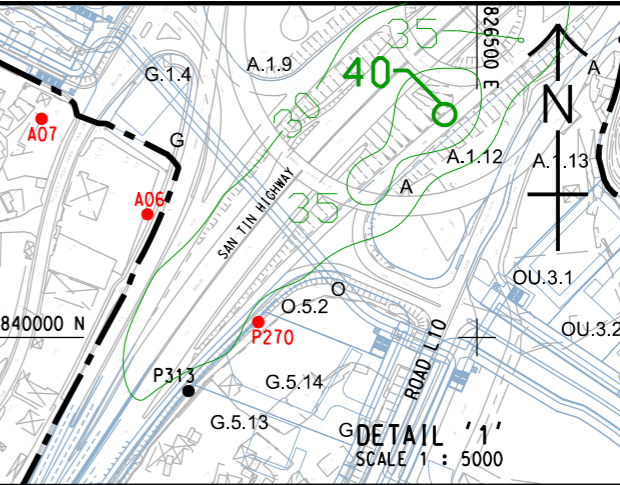
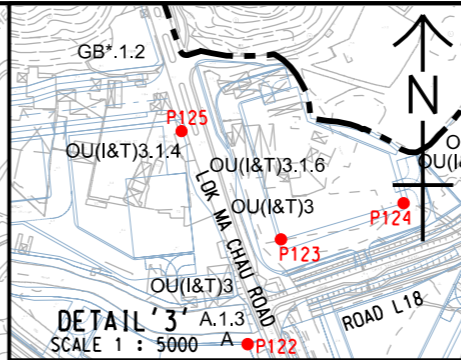
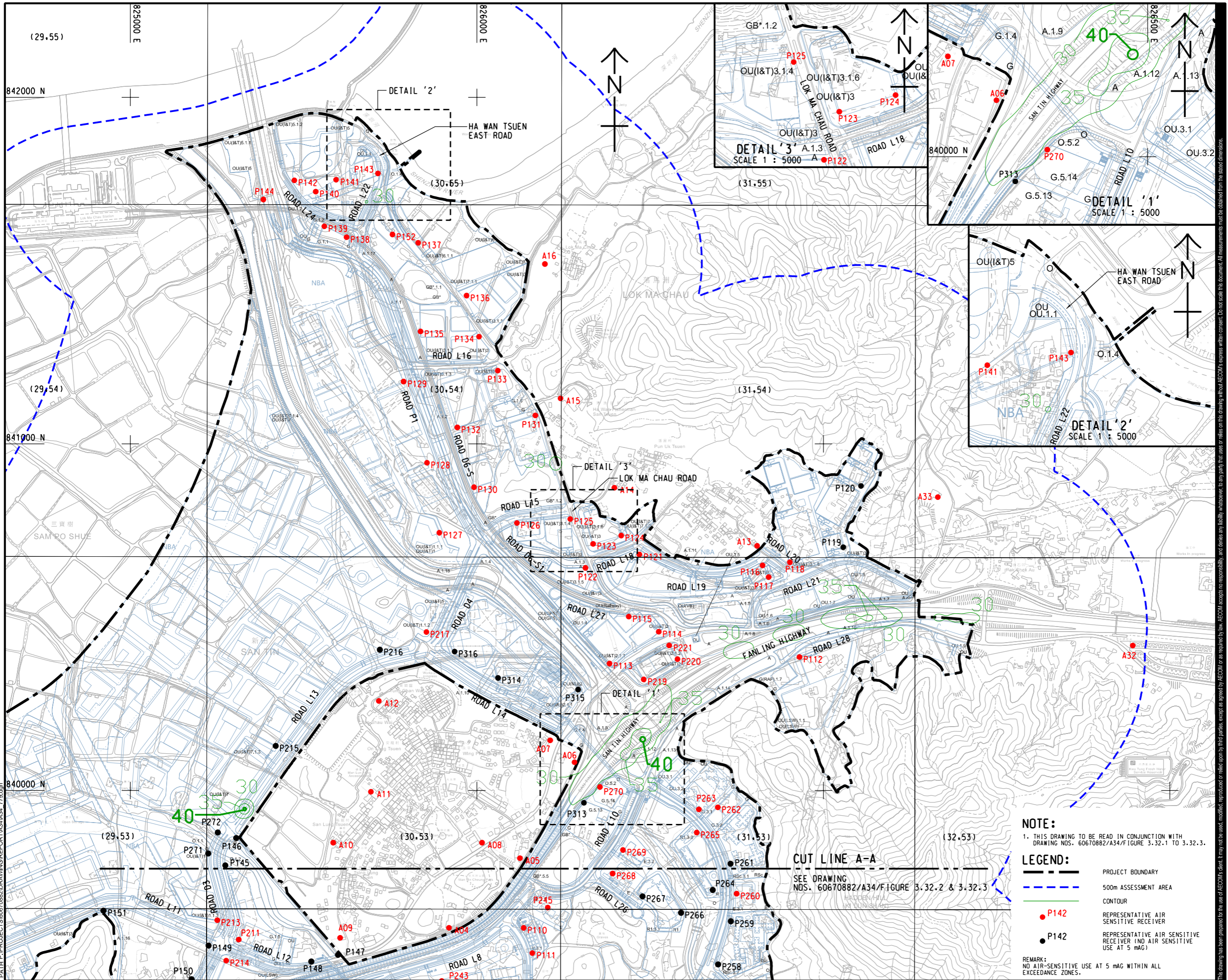
AGREEMENT NO.
 協議編號
 CE 20/2021

SHEET TITLE
 圖紙名稱
CONTOUR OF PREDICTED 19TH HIGHEST CUMULATIVE HOURLY NO2 CONCENTRATION AT 5 MAG (ug/m3) (YEAR 2034) SHEET 3 OF 3

SHEET NUMBER
 圖紙編號
 60670882/A34/FIGURE 3.31.3

This drawing has been prepared for the use of AECOM's client. It may not be used, modified, reproduced or relied upon by third parties, except as agreed by AECOM or as required by law. AECOM accepts no responsibility, and denies any liability, whatsoever, for any part, that, in or on this drawing, without AECOM's express written consent. All measurements must be obtained from the stated dimensions.

ISO A1 594mm x 841mm
Approved:
Checked:
Designer:
Project Management Initials:



AECOM

PROJECT
 項目
FIRST PHASE DEVELOPMENT OF THE NEW TERRITORIES NORTH – SAN TIN / LOK MA CHAU DEVELOPMENT NODE – INVESTIGATION

CLIENT
 業主
 **土木工程拓展署**
 Civil Engineering and Development Department
 **規劃署**
 Planning Department

CONSULTANT
 顧問公司
 AECOM Asia Company Ltd.
 www.aecom.com

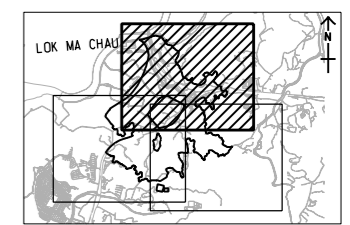
SUB-CONSULTANTS
 分包工程師/顧問公司

ISSUE/REVISION
 修訂

IR	DATE	DESCRIPTION	CHK.

STATUS
 階段

SCALE
 比例
 A3 1:10000
DIMENSION UNIT
 尺寸單位
 METRES



PROJECT NO.
 項目編號
 60670882





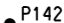
AGREEMENT NO.
 協議編號
 CE 20/2021

SHEET TITLE
 圖紙名稱
CONTOUR OF PREDICTED CUMULATIVE ANNUAL NO2 CONCENTRATION AT 5 mAG (ug/m3) (YEAR 2034) SHEET 1 OF 3

SHEET NUMBER
 圖紙編號
 60670882/A34/FIGURE 3.32.1

NOTE:
 1. THIS DRAWING TO BE READ IN CONJUNCTION WITH DRAWING NOS. 60670882/A34/FIGURE 3.32.1 TO 3.32.3.

LEGEND:

-  PROJECT BOUNDARY
-  500m ASSESSMENT AREA
-  CONTOUR
-  REPRESENTATIVE AIR SENSITIVE RECEIVER (P142)
-  REPRESENTATIVE AIR SENSITIVE RECEIVER (IND AIR SENSITIVE USE AT 5 mAG)

REMARK:
 NO AIR-SENSITIVE USE AT 5 mAG WITHIN ALL EXCEEDANCE ZONES.

CUT LINE A-A
 SEE DRAWING NOS. 60670882/A34/FIGURE 3.32.2 & 3.32.3

Plot File by: vicky.xia1 1/16/2024
 PATH: P:\PROJECTS\60670882\DRAWING\REPORT\A34\A34_778.dgn

This drawing has been prepared for the use of AECOM's client. It may not be used, modified, reproduced or relied upon by third parties, except as agreed by AECOM or as required by law. AECOM accepts no responsibility, and disclaims any liability, whatsoever, for any part, that users or reliance on this drawing without AECOM's express written consent. All measurements must be obtained from the stated dimensions.

ISO A1 594mm x 841mm
Approved:
Checked:
Designer:
Project Management Initials:
Plot File by: YueFB
PATH: P:\PROJECTS\60670882\DRAWING\REPORT\A3\A34_780.dgn

NOTES:
1. FOR NOTES AND LEGEND REFER TO DRAWING NO. 60670882/A34/Figure 3.32.1.
2. THIS DRAWING TO BE READ IN CONJUNCTION WITH DRAWING NOS. 60670882/A34/Figure 3.32.1 TO 3.32.3.



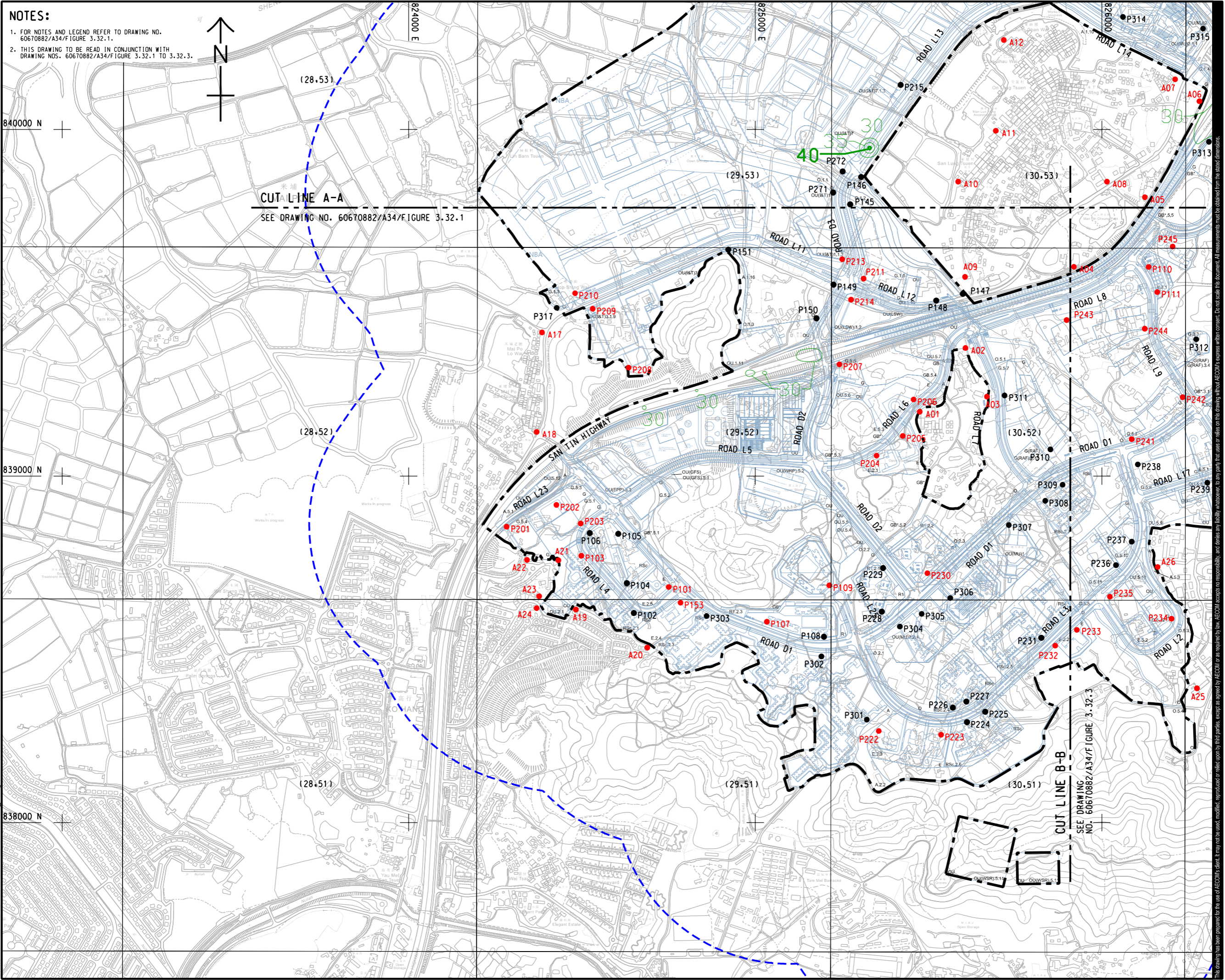
840000 N

839000 N

838000 N

CUT LINE A-A
SEE DRAWING NO. 60670882/A34/Figure 3.32.1

CUT LINE B-B
SEE DRAWING NO. 60670882/A34/Figure 3.32.3



PROJECT
FIRST PHASE DEVELOPMENT OF THE NEW TERRITORIES NORTH – SAN TIN / LOK MA CHAU DEVELOPMENT NODE – INVESTIGATION

CLIENT
土木工務拓展署
Civil Engineering and Development Department
規劃署
Planning Department

CONSULTANT
AECOM Asia Company Ltd.
www.aecom.com

SUB-CONSULTANTS

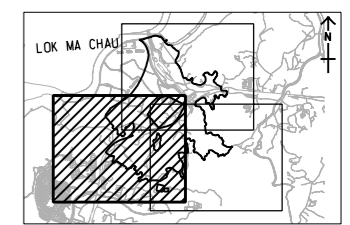
ISSUE/REVISION

IR	DATE	DESCRIPTION	CHK.

STATUS

SCALE **DIMENSION UNIT**
A3 1: 10000 METRES

KEY PLAN A3 1: 200000



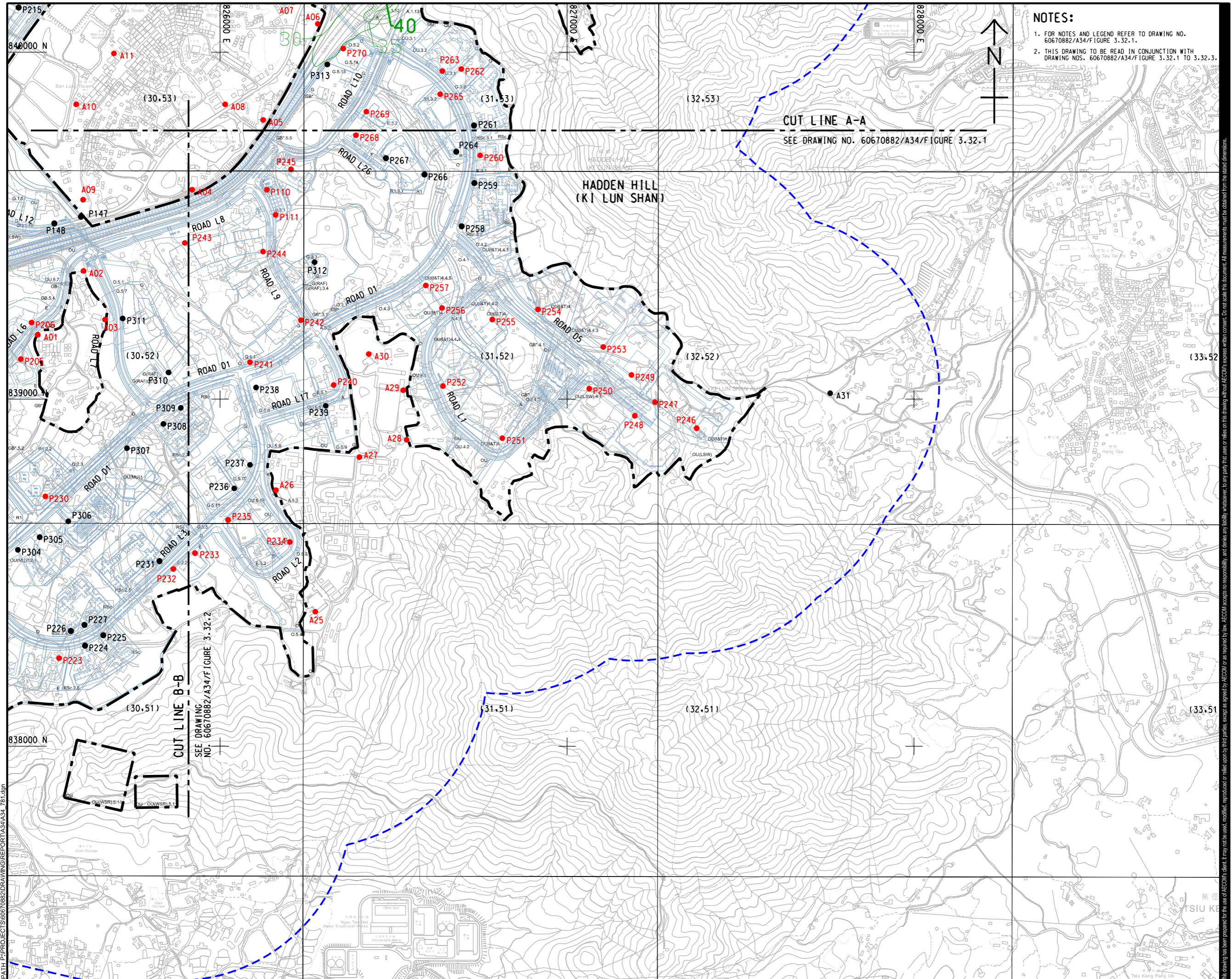
PROJECT NO. **AGREEMENT NO.**
60670882 CE 20/2021

SHEET TITLE
CONTOUR OF PREDICTED CUMULATIVE ANNUAL NO2 CONCENTRATION AT 5 mg/m3 (ug/m3) (YEAR 2034) SHEET 2 OF 3

SHEET NUMBER
60670882/A34/FIGURE 3.32.2

This drawing has been prepared for the use of AECOM's client. It may not be used, modified, reproduced or relied upon by third parties, except as agreed by AECOM or as required by law. AECOM accepts no responsibility, and disclaims any liability, whatsoever, to any party, that uses or relies on this drawing without AECOM's express written consent. All measurements must be obtained from the stated dimensions.

ISO A1 594mm x 841mm
 Approved:
 Checked:
 Designer:
 Project Management Initials:
 1/16/2024
 PATH PROJECTS/60670882/DRAWINGREPORT/A3/A34_781.dgn



NOTES:
 1. FOR NOTES AND LEGEND REFER TO DRAWING NO. 60670882/A34/FIGURE 3.32.1.
 2. THIS DRAWING TO BE READ IN CONJUNCTION WITH DRAWING NOS. 60670882/A34/FIGURE 3.32.1 TO 3.32.3.

CUT LINE A-A
 SEE DRAWING NO. 60670882/A34/FIGURE 3.32.1

CUT LINE B-B
 SEE DRAWING NO. 60670882/A34/FIGURE 3.32.2

AECOM
 PROJECT
FIRST PHASE DEVELOPMENT OF THE NEW TERRITORIES NORTH – SAN TIN / LOK MA CHAU DEVELOPMENT NODE – INVESTIGATION

CLIENT
 土木工程拓展署
CEDD Civil Engineering and Development Department
 規劃署
Planning Department

CONSULTANT
 AECOM Asia Company Ltd.
 www.aecom.com

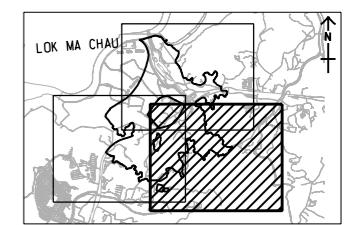
SUB-CONSULTANTS

ISSUE/REVISION

NO.	DATE	DESCRIPTION	CHK.

STATUS

SCALE **DIMENSION UNIT**
 比例 尺寸單位
 A3 1:10000 METRES



PROJECT NO. **AGREEMENT NO.**
 項目編號 協議編號
 60670882 CE 20/2021

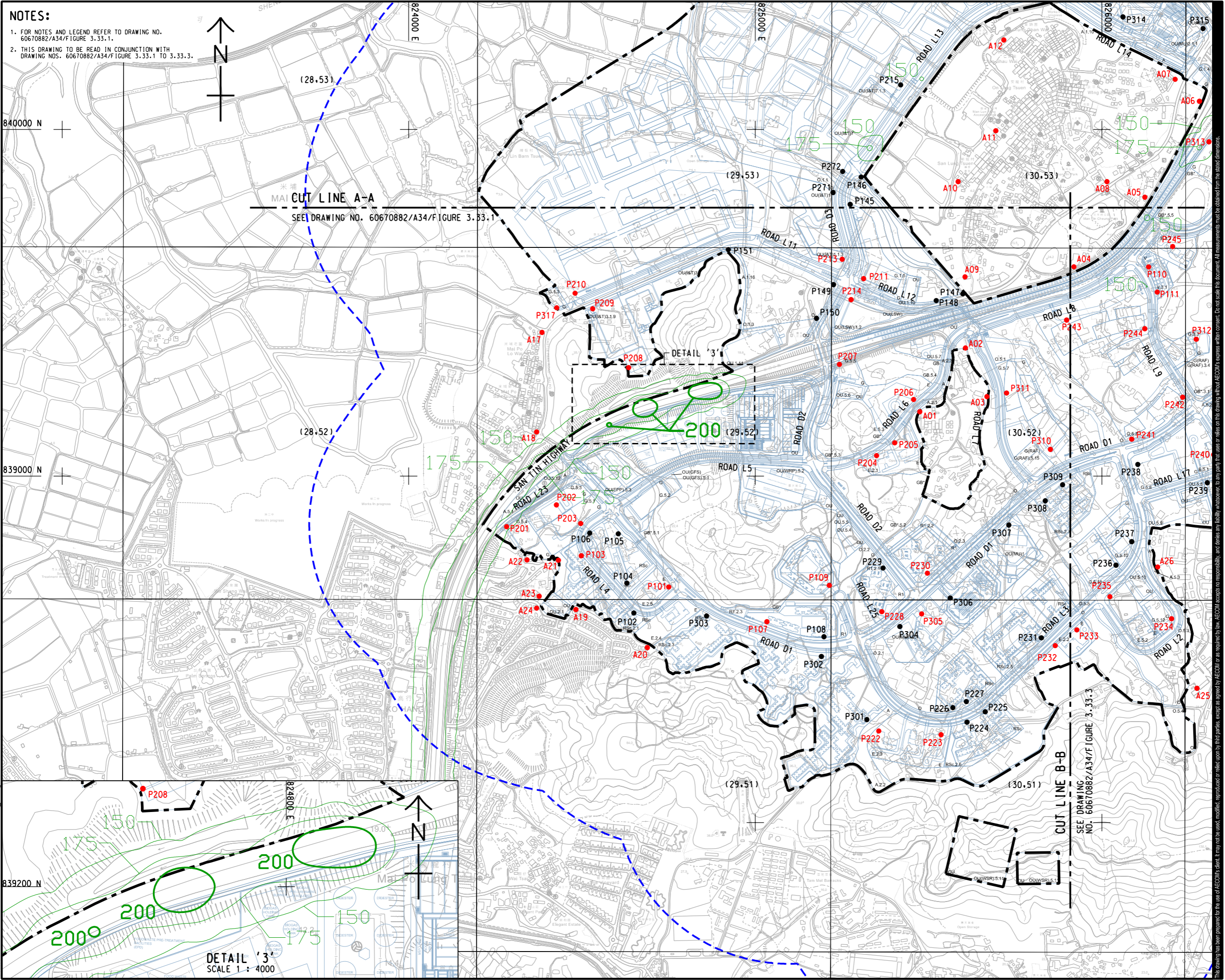
SHEET TITLE
 圖紙名稱
CONTOUR OF PREDICTED CUMULATIVE ANNUAL NO2 CONCENTRATION AT 5 mAG (ug/m3) (YEAR 2034) SHEET 3 OF 3
SHEET NUMBER
 圖紙編號
 60670882/A34/FIGURE 3.32.3

This drawing has been prepared for the use of AECOM's client. It may not be used, modified, reproduced or relied upon by third parties, except as agreed by AECOM or as required by law. AECOM accepts no responsibility, and denies any liability, whatsoever, for any part, that less or more on this drawing without AECOM's express written consent. All measurements must be obtained from the stated dimensions.


ISO A1 594mm x 841mm
Approved:
Checked:
Designer:
Project Management Initials:
1/13/2024
DRAWING NO. 60670882/A34/Figure 3.33.2

NOTES:

- FOR NOTES AND LEGEND REFER TO DRAWING NO. 60670882/A34/Figure 3.33.1.
- THIS DRAWING TO BE READ IN CONJUNCTION WITH DRAWING NOS. 60670882/A34/Figure 3.33.1 TO 3.33.3.



PROJECT
 項目
FIRST PHASE DEVELOPMENT OF THE NEW TERRITORIES NORTH – SAN TIN / LOK MA CHAU DEVELOPMENT NODE – INVESTIGATION

CLIENT
 業主
 **土木工程拓展署**
 Civil Engineering and Development Department
 **規劃署**
 Planning Department

CONSULTANT
 工程顧問公司
 AECOM Asia Company Ltd.
 www.aecom.com

SUB-CONSULTANTS
 分判工程顧問公司

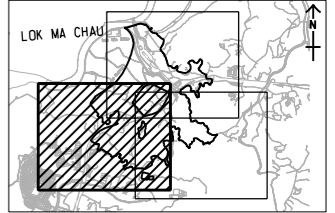
ISSUE/REVISION
 修訂

IR	DATE	DESCRIPTION	CHK.

STATUS
 階段

SCALE
 比例
 A3 1 : 10000
DIMENSION UNIT
 尺寸單位
 METRES

KEY PLAN A3 1 : 200000
 索引圖



PROJECT NO.
 項目編號
 60670882
AGREEMENT NO.
 協議編號
 CE 20/2021

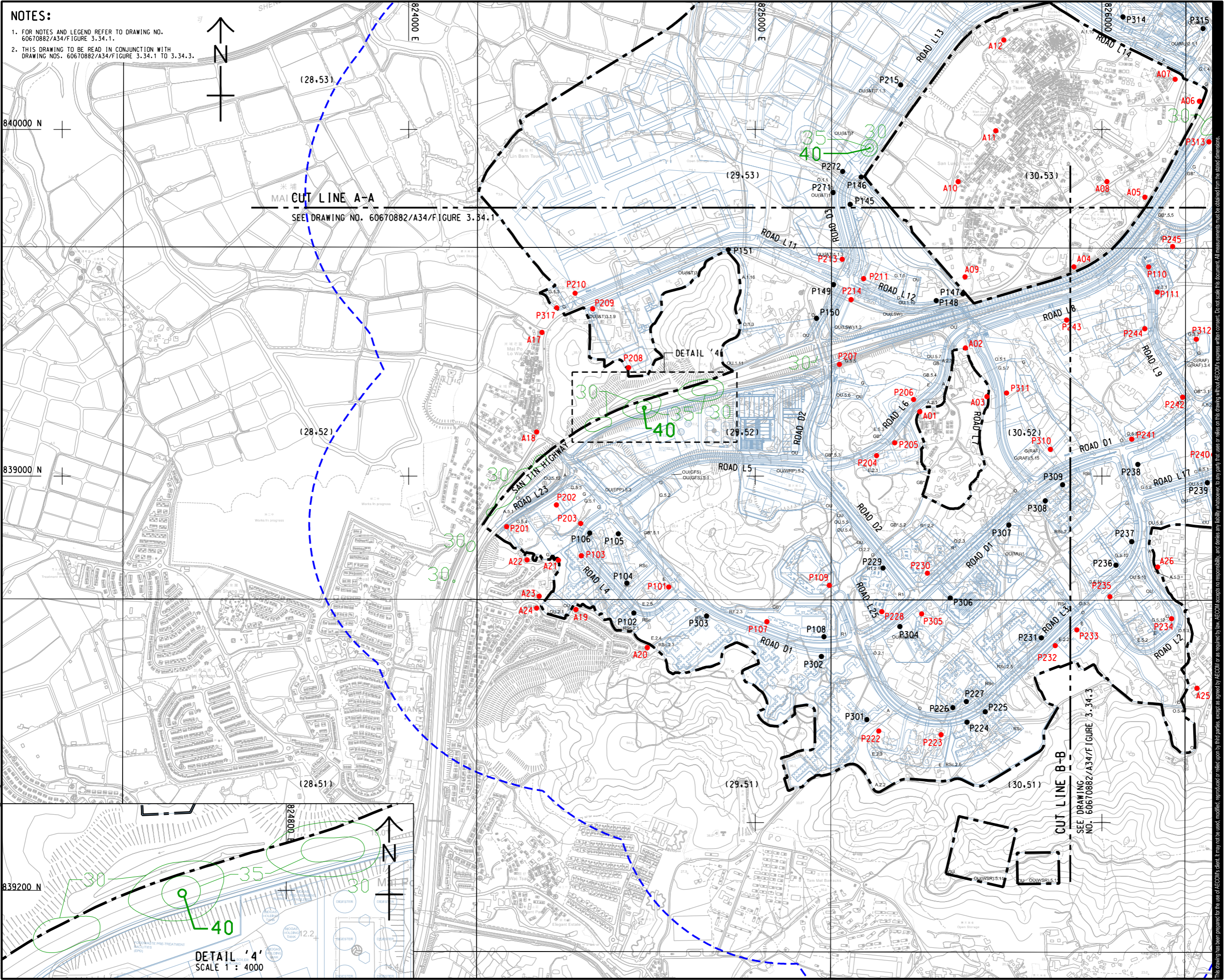
SHEET TITLE
 圖則名稱
CONTOUR OF PREDICTED 19TH HIGHEST CUMULATIVE HOURLY NO2 CONCENTRATION AT 5 mAG (ug/m3) (YEAR 2039)
 SHEET 2 OF 3

SHEET NUMBER
 圖則編號
 60670882/A34/FIGURE 3.33.2

This drawing has been prepared for the use of AECOM's client. It may not be used, modified, reproduced or relied upon by third parties, except as agreed by AECOM in writing. AECOM accepts no responsibility, and disclaims any liability, whatsoever, for any loss, that arises or may arise from this drawing without AECOM's express written consent. All measurements must be obtained from the stated dimensions.


ISO A1 594mm x 841mm
 Approved:
 Checked:
 Designer:
 Project Management Initials:
 1/13/2024
 PATH 2-PROJECTS/60670882/DRAWINGREPORT/A34/A34_786.dgn
 Plot File by: vicky.xia1

NOTES:
 1. FOR NOTES AND LEGEND REFER TO DRAWING NO. 60670882/A34/Figure 3.34.1.
 2. THIS DRAWING TO BE READ IN CONJUNCTION WITH DRAWING NOS. 60670882/A34/Figure 3.34.1 TO 3.34.3.



AECOM

PROJECT
 項目
FIRST PHASE DEVELOPMENT OF THE NEW TERRITORIES NORTH – SAN TIN / LOK MA CHAU DEVELOPMENT NODE – INVESTIGATION

CLIENT
 業主
 **土木工程拓展署**
 Civil Engineering and Development Department
 **規劃署**
 Planning Department

CONSULTANT
 顧問公司
 AECOM Asia Company Ltd.
 www.aecom.com

SUB-CONSULTANTS
 分判工程師/顧問公司

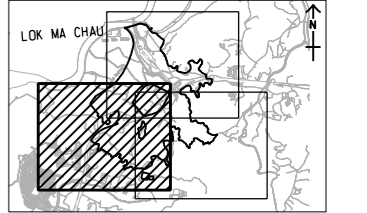
ISSUE/REVISION
 修訂

IR	DATE	DESCRIPTION	CHK.

STATUS
 階段

SCALE
 比例
 A3 1 : 10000
DIMENSION UNIT
 尺寸單位
 METRES

KEY PLAN A3 1 : 200000
 索引圖



PROJECT NO.
 項目編號
 60670882
AGREEMENT NO.
 協議編號
 CE 20/2021

SHEET TITLE
 圖紙名稱
CONTOUR OF PREDICTED CUMULATIVE ANNUAL NO2 CONCENTRATION AT 5 mg/m3 (ug/m3) (YEAR 2039)
 SHEET 2 OF 3
SHEET NUMBER
 圖紙編號
 60670882/A34/FIGURE 3.34.2

This drawing has been prepared for the use of AECOM's client. It may not be used, modified, reproduced or relied upon by third parties, except as agreed by AECOM in writing. AECOM accepts no responsibility, and disclaims any liability, whatsoever, for any error, omission or inaccuracy in this drawing without AECOM's express written consent. All measurements must be obtained from the stated dimensions.

ISO A1 594mm x 841mm
 Approved: _____
 Checked: _____
 Designer: _____
 Project Management Initials: _____
 File Path: \\vicky.xia1\1152\2024\2411\PROJECTS\60670882\DRAWING\REPORT\A34\A34_787.dgn
 Plot File by: vicky.xia1 1/15/2024

