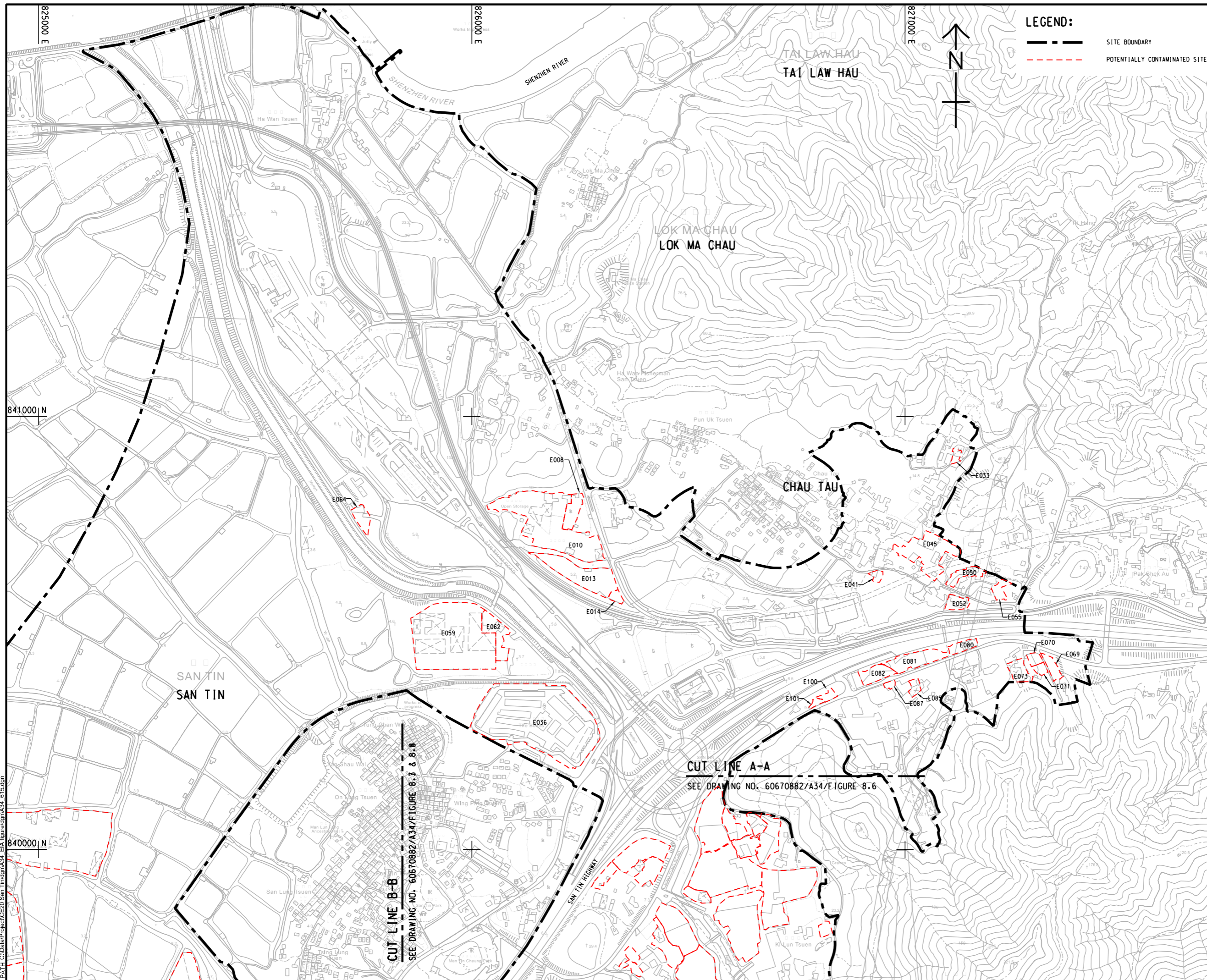


ISO A1 594mm x 841mm
 Approved:
 Checked:
 Designer:
 Project Management Initials:

PHI File by: Chow R
 PATH: C:\Data\Project\CE20 San Tin\dm\A34_815.dgn



PROJECT
 項目
FIRST PHASE DEVELOPMENT OF THE NEW TERRITORIES NORTH – SAN TIN / LOK MA CHAU DEVELOPMENT NODE – INVESTIGATION

CLIENT
 業主
 **土木工程拓展署**
 Civil Engineering and Development Department
 **規劃署**
 Planning Department

CONSULTANT
 顧問公司
 AECOM Asia Company Ltd.
 www.aecom.com

SUB-CONSULTANTS
 分判工程師/顧問公司

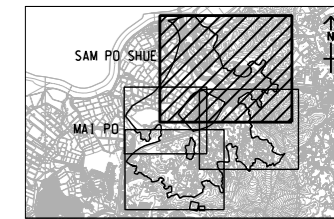
ISSUE/REVISION
 修訂

I/R	DATE	DESCRIPTION	CHK.

STATUS
 階段

SCALE
 比例
 A3 1 : 8000

DIMENSION UNIT
 尺寸單位
 米/公尺



PROJECT NO.
 項目編號
 60670882

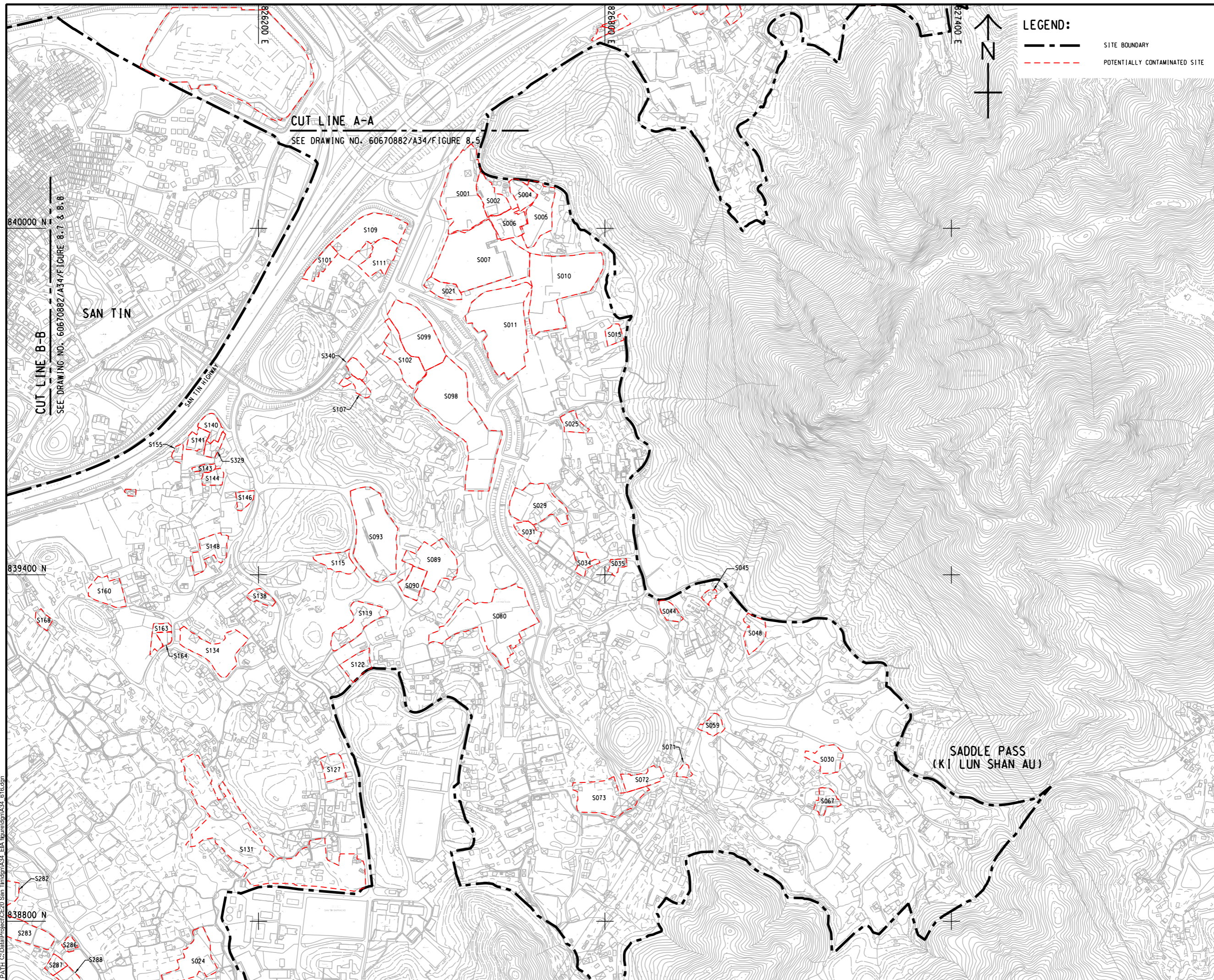
AGREEMENT NO.
 協議編號
 CE 20/2021

SHEET TITLE
 圖紙名稱
LOCATION PLAN OF POTENTIALLY CONTAMINATED SITES (EASTERN PORTION)

SHEET NUMBER
 圖紙編號
 60670882/A34/FIGURE 8.5

This drawing has been prepared for the use of AECOM's client. It may not be used, modified, reproduced or relied upon by third parties, except as agreed by AECOM. AECOM accepts no responsibility, and denies any liability, whatsoever, to any party that uses or relies on this drawing without AECOM's express written consent. Do not scale this document. All measurements must be obtained from the stated dimensions.

ISO A1 594mm x 841mm
 Approved:
 Checked:
 Designer:
 Project Management Initials:
 PH File By: Chow R
 10/27/2023
 PATH C:\Data\Project\CE20 San Tin\dm\A34_EIA_figure\dm\A34_616.dgn



LEGEND:
 - - - - - SITE BOUNDARY
 - - - - - POTENTIALLY CONTAMINATED SITE



PROJECT
 項目
FIRST PHASE DEVELOPMENT OF THE NEW TERRITORIES NORTH – SAN TIN / LOK MA CHAU DEVELOPMENT NODE – INVESTIGATION

CLIENT
 業主
 土木工程拓展署
 Civil Engineering and Development Department
 規劃署
 Planning Department

CONSULTANT
 顧問公司
 AECOM Asia Company Ltd.
 www.aecom.com

SUB-CONSULTANTS
 分判工程顧問公司

ISSUE/REVISION
 修訂

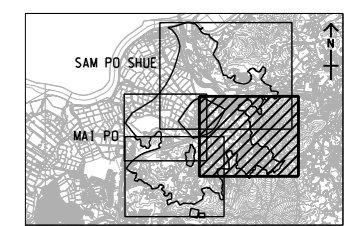
I/R	DATE	DESCRIPTION	CHK.

STATUS
 階段

SCALE
 比例
 A3 1 : 6000

DIMENSION UNIT
 尺寸單位
 METRES

KEY PLAN A3 1 : 160000
 索引圖



PROJECT NO.
 項目編號
 60670882

AGREEMENT NO.
 協議編號
 CE 20/2021

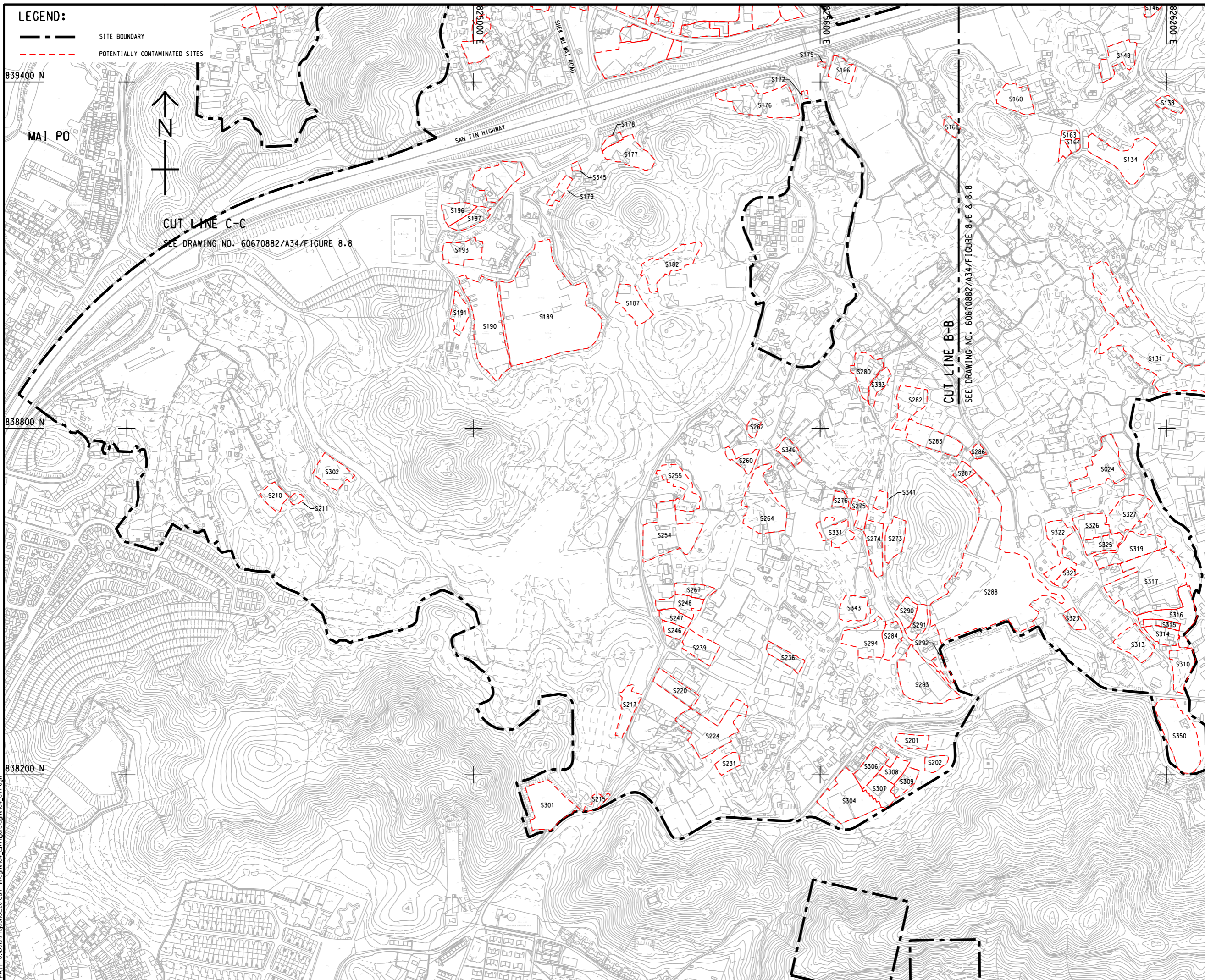
SHEET TITLE
 圖紙名稱
 LOCATION PLAN OF POTENTIALLY CONTAMINATED SITES (SOUTHERN PORTION)

SHEET 1 OF 2

SHEET NUMBER
 圖紙編號
 60670882/A34/FIGURE 8.6

This drawing has been prepared for the use of AECOM's client. It may not be used, modified, reproduced or relied upon by third parties, except as agreed by AECOM or as required by law. AECOM accepts no responsibility, and denies any liability whatsoever, to any party that uses or relies on this drawing without AECOM's express written consent. Do not scale this document. All measurements must be obtained from the stated dimensions.

ISO A1 594mm x 841mm
 Approved:
 Checked:
 Designer:
 Project Management Initials:
 PH: File by: Chow R 10/27/2023
 PATH: C:\Data\Project\CE20 San Tin\dm\A34_EIA_figure\dm\A34_817.dgn



PROJECT
 項目
FIRST PHASE DEVELOPMENT OF THE NEW TERRITORIES NORTH – SAN TIN / LOK MA CHAU DEVELOPMENT NODE – INVESTIGATION

CLIENT
 業主
 土木工程拓展署
 Civil Engineering and Development Department
 規劃署
 Planning Department

CONSULTANT
 顧問公司
 AECOM Asia Company Ltd.
 www.aecom.com

SUB-CONSULTANTS
 分判工程師/顧問公司

ISSUE/REVISION
 修訂

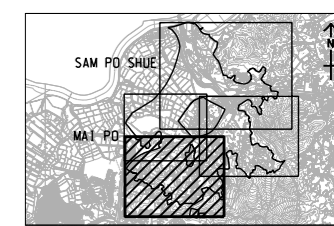
I/R	DATE	DESCRIPTION	CHK.

STATUS
 階段

SCALE
 比例
 A3 1 : 6000

DIMENSION UNIT
 尺寸單位
 METRES

KEY PLAN A3 1 : 160000
 索引圖



PROJECT NO.
 項目編號
 60670882

AGREEMENT NO.
 協議編號
 CE 20/2021

SHEET TITLE
 圖紙名稱
 LOCATION PLAN OF POTENTIALLY CONTAMINATED SITES (SOUTHERN PORTION)
 SHEET 2 OF 2

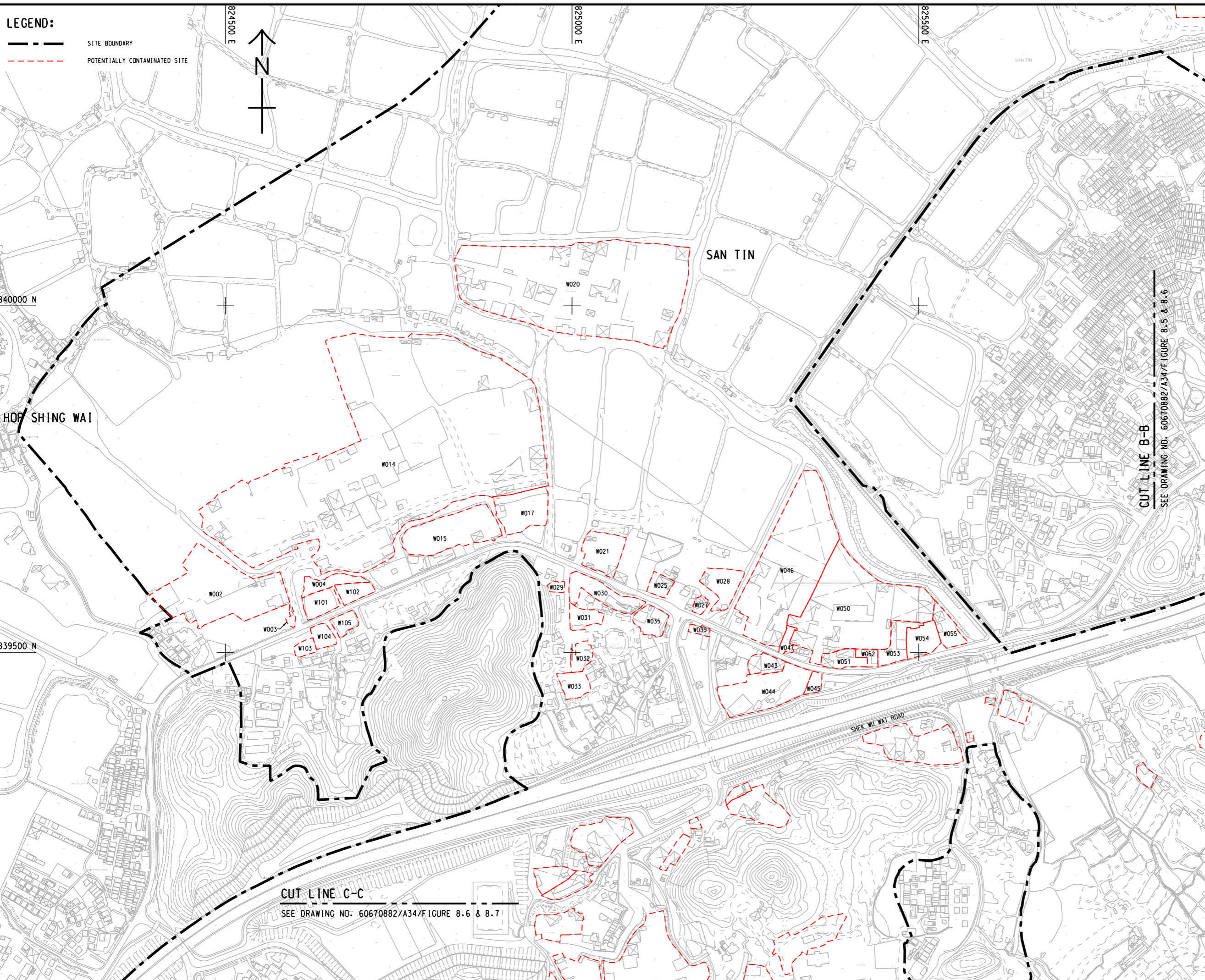
SHEET NUMBER
 圖紙編號
 60670882/A34/FIGURE 8.7

This drawing has been prepared for the use of AECOM's client. It may not be used, modified, reproduced or published in any form without the prior written consent of AECOM. AECOM accepts no responsibility, and denies any liability whatsoever, to any party that uses or relies on this drawing without AECOM's express written consent. All measurements must be obtained from the status dimensions.

ISO A1 594mm x 841mm
 Approved:
 Checked:
 Designer:
 Project Management Initials:
 PM File by: Chow R. 10/27/2023
 PATH_C:\Data\Project\CE20 San Tin\dm\A34_EIA\figure\dm\A34_618.dgn

LEGEND:

- SITE BOUNDARY
- POTENTIALLY CONTAMINATED SITE



AECOM

PROJECT
 項目
 FIRST PHASE DEVELOPMENT OF
 THE NEW TERRITORIES NORTH –
 SAN TIN / LOK MA CHAU
 DEVELOPMENT NODE –
 INVESTIGATION

CLIENT
 業主
 土木工程拓展署
 Civil Engineering and
 Development Department
 規劃署
 Planning Department

CONSULTANT
 顧問公司
 AECOM Asia Company Ltd.
 www.aecom.com

SUB-CONSULTANTS
 分判工程師/顧問公司

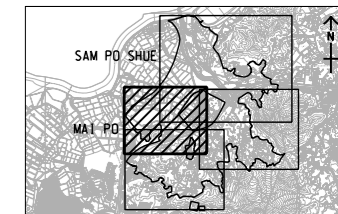
ISSUE/REVISION
 修訂

I/R	DATE	DESCRIPTION	CHK.

STATUS
 階段

SCALE **DIMENSION UNIT**
 比例 尺寸單位
 A3 1 : 5000 METRES

KEY PLAN A3 1 : 160000
 索引圖



PROJECT NO. **AGREEMENT NO.**
 項目編號 協議編號
 60670882 CE 20/2021

SHEET TITLE
 圖紙名稱
 LOCATION PLAN OF POTENTIALLY
 CONTAMINATED SITES
 (WESTERN PORTION)

SHEET NUMBER
 圖紙編號
 60670882/A34/FIGURE 8.8

This drawing has been prepared for the use of AECOM's client. It may not be used, modified, reproduced or relied upon by third parties, except as agreed by AECOM. AECOM accepts no responsibility, and denies any liability whatsoever, to any party that uses or relies on this drawing without AECOM's express written consent. Do not scale this document. All measurements must be obtained from the stated dimensions.