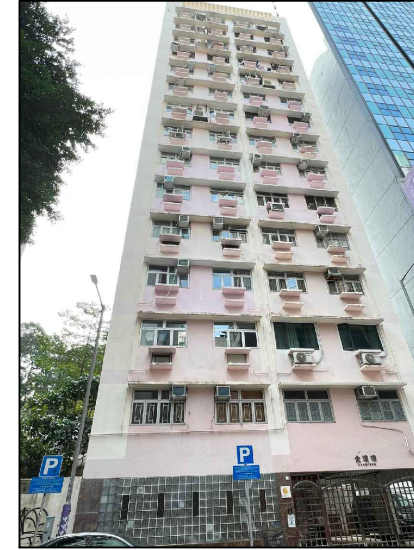




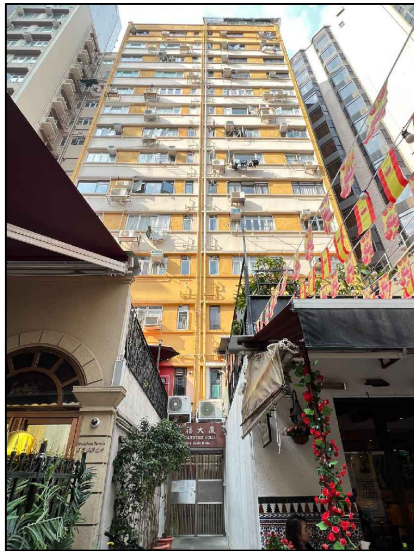
NSR01  
HKO Quarters No.2 & 3



NSR02  
HKO Quarters No.1



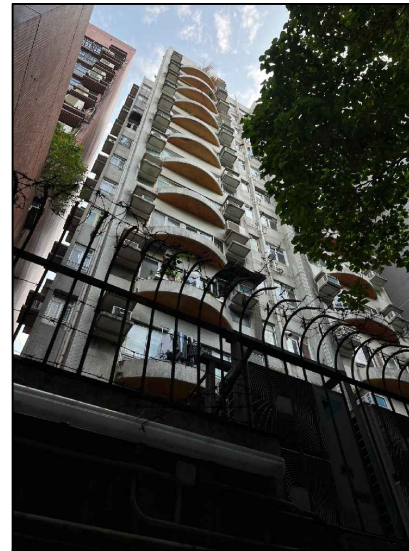
NSR03  
King's Mansion



NSR04  
New Knutsford House



NSR05  
Lok Fun Mansion



NSR06  
Carlton Building



NSR07  
St. Andrew's Church

NOTES :



Consultant



**Allied Environmental Consultants Limited**

Project No. : 1709

File Name : -

Project :  
CONSTRUCTION OF ANNEX BLOCK  
AT HONG KONG OBSERVATORY  
HEADQUARTERS, TSIM SHA TSUI  
尖沙咀天文台總部副樓興建計劃

Drawing Title :  
LOCATIONS OF REPRESENTATIVE  
NOISE SENSITIVE RECEIVERS  
具代表性的噪音敏感受體位置

Drawing No. : FIGURE 5.1b 圖5.1b	Revision : 4
Scale : AS SHOWN 如圖示	Date : JUL 2023

THIS DRAWING IS NOT FOR CONSTRUCTION PURPOSES UNLESS  
EXPRESSLY STATED.  
ALL RIGHTS RESERVED AND REPRODUCTION IN ANY FORM MUST  
BE APPROVED BY ALLIED SUSTAINABILITY AND ENVIRONMENTAL  
CONSULTANTS GROUP LIMITED