

Appendix 10.3

Individual Tree Survey for Trunkmain between Ching Yau Road & San Tam Road

Tree Assessment Schedule - Upgrading of existing DN1400 trunk mains to DN1600 (section between San Tam Road and Ching Yau Road)
 Project Title: Tree Survey for Laying of fresh water trunk mains from the Ngau Tam Mei Fresh Water Primary Reservoir to Tan Kwai Tsuen - Investigation
 Agreement No.: CE 80/2020 (WS)
 Date of Tree Survey: 19 January 2023

Tree No.	Species		Measurements			Amenity value	Form	Health condition	Structural condition	Suitability for Transplanting		Conservation status	Recommendation (retain/transplant/remove)	Maintenance department to provide		Additional Remarks	HyD SIMAR slope feature (If any)
	Scientific name	Chinese name	Height (m)	DBH (mm)	Crown Spread (m)	(high(H)/medium(M)/low(L))	(good(G)/average(A)/poor(P))	(good(G)/average(A)/poor(P))	(good(G)/average(A)/poor(P))	(high(H)/medium(M)/low(L))	Remarks*			Before	After		
T3746	<i>Macaranga tanarius var. tomentosa</i>	血桐	7	280	9	L	A	A	A	L	a, c	Nil	Remove	LandsD	-		
T3747	<i>Ficus hispida</i>	對葉榕	4	130	3	L	P	P	P	L	a, c, f	Nil	Remove	LandsD	-	Trunk split	
T3748	<i>Ficus hispida</i>	對葉榕	6	160	4	L	A	A	A	L	a, c	Nil	Remove	LandsD	-		
T3749	<i>Leucaena leucocephala</i>	銀合歡	13	370	6	L	P	P	P	L	a, f, g	Nil	Remove	LandsD	-	Collapsed	
T3750	<i>Macaranga tanarius var. tomentosa</i>	血桐	8	320	10	L	P	A	A	L	a, c, f	Nil	Retain	LandsD	LandsD	Lean	
T3751	<i>Leucaena leucocephala</i>	銀合歡	5	100	3	L	P	A	P	L	a, g	Nil	Remove	LandsD	-	Lean	
T3752	<i>Macaranga tanarius var. tomentosa</i>	血桐	6	140	3	L	A	A	A	L	a, c	Nil	Retain	LandsD	LandsD		
T3753	<i>Macaranga tanarius var. tomentosa</i>	血桐	6	160	6	L	A	A	A	L	a, c	Nil	Remove	LandsD	-		
T3754	<i>Macaranga tanarius var. tomentosa</i>	血桐	6	170	5	L	P	A	P	L	a, c, f	Nil	Remove	LandsD	-	Co-dominant trunks, Included bark	
T3755	<i>Leucaena leucocephala</i>	銀合歡	10	310	6	L	P	A	P	L	a, f, g	Nil	Remove	LandsD	-	Co-dominant trunks, Included bark	
T3756	<i>Leucaena leucocephala</i>	銀合歡	5	120	3	L	P	A	A	L	a, g	Nil	Remove	LandsD	-	Climbers	
T3757	<i>Leucaena leucocephala</i>	銀合歡	8	170	5	L	P	A	A	L	a, g	Nil	Remove	LandsD	-	Climbers	
T3758	<i>Leucaena leucocephala</i>	銀合歡	4	120	4	L	P	A	P	L	a, g	Nil	Remove	LandsD	-	Broken top	
T3759	<i>Macaranga tanarius var. tomentosa</i>	血桐	7	240	6	L	A	A	A	L	a, c	Nil	Remove	LandsD	-		
T3760	<i>Leucaena leucocephala</i>	銀合歡	11	310	8	L	A	A	A	L	a, g	Nil	Remove	LandsD	-		
T3761	<i>Macaranga tanarius var. tomentosa</i>	血桐	5	170	4	L	P	P	P	L	a, c, f	Nil	Remove	LandsD	-	Collapsed	
T3762	<i>Macaranga tanarius var. tomentosa</i>	血桐	7	190	6	L	A	A	A	L	a, c	Nil	Remove	LandsD	-		
T3763	<i>Leucaena leucocephala</i>	銀合歡	5	130	3	L	A	A	A	L	a, g	Nil	Remove	LandsD	-		
T3764	<i>Leucaena leucocephala</i>	銀合歡	5	140	4	L	P	P	P	L	a, f, g	Nil	Remove	LandsD	-	Collapsed	
T3765	<i>Leucaena leucocephala</i>	銀合歡	5	110	3	L	A	A	A	L	a, g	Nil	Remove	LandsD	-		
T3766	<i>Macaranga tanarius var. tomentosa</i>	血桐	5	190	5	L	P	A	A	L	a, c, f	Nil	Remove	LandsD	-	Lean	
T3767	<i>Ficus hispida</i>	對葉榕	5	210	5	L	P	A	A	L	a, c, f	Nil	Retain	LandsD	LandsD	Climbers	
T3768	<i>Melia azedarach</i>	苦楝	11	100	10	L	A	A	A	L	a, c	Nil	Remove	LandsD	-		
T3769	<i>Ficus hispida</i>	對葉榕	6	130	4	L	A	A	A	L	a, c	Nil	Remove	LandsD	-		
T3770	<i>Macaranga tanarius var. tomentosa</i>	血桐	5	220	8	L	A	A	A	L	a, c	Nil	Retain	LandsD	LandsD		
T3771	<i>Syzygium jambos</i>	蒲桃	11	410	12	L	P	A	A	L	a, c, f	Nil	Remove	LandsD	-	Lean	
T3772	<i>Ficus hispida</i>	對葉榕	4	130	4	L	A	A	A	L	a, c	Nil	Retain	LandsD	LandsD		
T3773	<i>Macaranga tanarius var. tomentosa</i>	血桐	8	180	6	L	A	A	A	L	a, c	Nil	Remove	LandsD	-		
T3774	<i>Macaranga tanarius var. tomentosa</i>	血桐	5	120	5	L	A	A	A	L	a, c	Nil	Retain	LandsD	LandsD		
T3775	<i>Macaranga tanarius var. tomentosa</i>	血桐	6	120	4	L	A	A	A	L	a, c	Nil	Retain	LandsD	LandsD		
T3776	<i>Macaranga tanarius var. tomentosa</i>	血桐	4	110	4	L	A	A	A	L	a, c	Nil	Retain	LandsD	LandsD		
T3777	<i>Macaranga tanarius var. tomentosa</i>	血桐	4	100	3	L	A	A	A	L	a, c	Nil	Retain	LandsD	LandsD		
T3778	<i>Macaranga tanarius var. tomentosa</i>	血桐	4	120	4	L	A	A	A	L	a, c	Nil	Retain	LandsD	LandsD		
T3779	<i>Ficus hispida</i>	對葉榕	8	250	6	L	A	A	A	L	a, c	Nil	Remove	LandsD	-		
T3780	<i>Macaranga tanarius var. tomentosa</i>	血桐	5	100	4	L	A	A	A	L	a, c	Nil	Retain	LandsD	LandsD		
T3781	<i>Sterculia lanceolata</i>	假蒴藋	9	310	6	L	A	A	A	L	a, c	Nil	Retain	LandsD	LandsD		
T3782	<i>Macaranga tanarius var. tomentosa</i>	血桐	6	100	3	L	A	A	A	L	a, c	Nil	Remove	LandsD	-		
T3783	<i>Macaranga tanarius var. tomentosa</i>	血桐	6	130	5	L	A	A	A	L	a, c	Nil	Remove	LandsD	-		
T3784	<i>Micoccos nervosa</i>	布渣葉	4	100	3	L	A	A	A	L	a, c	Nil	Retain	LandsD	LandsD		
T3785	<i>Ficus hispida</i>	對葉榕	6	230	5	L	A	A	A	L	a, c	Nil	Remove	LandsD	-		
T3786	<i>Ligustrum sinense</i>	山指甲	4	140	3	L	A	A	A	L	a, c	Nil	Remove	LandsD	-		
T3787	<i>Melia azedarach</i>	苦楝	9	330	6	L	A	A	A	L	a, c	Nil	Remove	LandsD	-		
T3788	<i>Acacia confusa</i>	台灣相思	10	430	6	L	A	A	A	L	a, c	Nil	Remove	LandsD	-		
T3789	<i>Celtis sinensis</i>	朴樹	6	150	5	L	A	A	A	L	a, c	Nil	Remove	LandsD	-		
T3790	<i>Celtis sinensis</i>	朴樹	7	140	5	L	A	A	A	L	a, c	Nil	Remove	LandsD	-		
T3791	<i>Acacia confusa</i>	台灣相思	7	230	7	L	A	A	A	L	a, c	Nil	Remove	LandsD	-		
T3792	<i>Ligustrum sinense</i>	山指甲	4	110	3	L	A	A	A	L	a, c	Nil	Remove	LandsD	-		
T3793	<i>Acacia confusa</i>	台灣相思	14	450	10	L	A	A	A	L	a, c	Nil	Remove	LandsD	-		
T3794	<i>Melia azedarach</i>	苦楝	10	220	5	L	A	A	A	L	a, c	Nil	Remove	LandsD	-		
T3795	<i>Celtis sinensis</i>	朴樹	3	100	4	L	A	A	A	L	a, c	Nil	Remove	LandsD	-		
T3796	<i>Ficus hispida</i>	對葉榕	4	140	4	L	A	A	A	L	a, c	Nil	Remove	LandsD	-		
T3797	<i>Acacia confusa</i>	台灣相思	5	130	3	L	A	A	A	L	a, c	Nil	Remove	LandsD	-		
T3798	<i>Acacia confusa</i>	台灣相思	6	350	6	L	A	A	A	L	a, c	Nil	Remove	LandsD	-		
T3799	<i>Glochidion lanceolarium</i>	艾膠算盤子	5	150	4	L	A	A	A	L	a, c	Nil	Remove	LandsD	-		
T3800	<i>Glochidion lanceolarium</i>	艾膠算盤子	4	140	3	L	P	A	A	L	a, c, f	Nil	Remove	LandsD	-	Climbers	
T3801	<i>Glochidion lanceolarium</i>	艾膠算盤子	6	150	4	L	A	A	A	L	a, c	Nil	Remove	LandsD	-		
T3802	<i>Ligustrum sinense</i>	山指甲	8	170	7	L	A	A	A	L	a, c	Nil	Remove	LandsD	-		
T3803	<i>Bombax ceiba</i>	木棉	8	210	5	L	P	A	P	L	a, c, f	Nil	Remove	LandsD	-	Co-dominant trunks, Included bark	
T3804	<i>Glochidion lanceolarium</i>	艾膠算盤子	6	210	6	L	P	A	A	L	a, c, f	Nil	Remove	LandsD	-	Climbers	

Tree Assessment Schedule - Upgrading of existing DN1400 trunk mains to DN1600 (section between San Tam Road and Ching Yau Road)
 Project Title: Tree Survey for Laying of fresh water trunk mains from the Ngau Tam Mei Fresh Water Primary Reservoir to Tan Kwai Tsuen - Investigation
 Agreement No.: CE 80/2020 (WS)
 Date of Tree Survey: 19 January 2023

Tree No.	Species		Measurements			Amenity value	Form	Health condition	Structural condition	Suitability for Transplanting		Conservation status	Recommendation	Maintenance department to provide		Additional Remarks	HyD SIMAR slope feature (If any)
	Scientific name	Chinese name	Height (m)	DBH (mm)	Crown Spread (m)	(high(H)/medium(M)/low(L))	(good(G)/average(A)/poor(P))	(good(G)/average(A)/poor(P))	(good(G)/average(A)/poor(P))	(high(H)/medium(M)/low(L))	Remarks*		(retain/transplant/remove)	Before	After		
T3805	<i>Glochidion lanceolarium</i>	艾羅算盤子	4	150	3	L	A	A	A	L	a, c	Nil	Remove	LandsD	-		
T3806	<i>Glochidion lanceolarium</i>	艾羅算盤子	5	150	4	L	A	A	A	L	a, c	Nil	Remove	LandsD	-		
T3807	<i>Bridelia tomentosa</i>	土蜜樹	3	100	4	L	P	A	A	L	a, c, f	Nil	Remove	LandsD	-	Climbers	
T3808	<i>Acacia confusa</i>	台灣相思	11	300	13	L	P	A	A	L	a, c, f	Nil	Remove	LandsD	-	Multi-trunk	
T3809	<i>Leucaena leucocephala</i>	銀合歡	6	180	5	L	A	A	A	L	a, g	Nil	Remove	LandsD	-		
T3810	<i>Macaranga tanarius</i> var. <i>tomentosa</i>	血桐	4	180	5	L	A	A	A	L	a, c	Nil	Remove	LandsD	-		
T3811	<i>Acacia confusa</i>	台灣相思	4	330	4	L	A	A	A	L	a, c	Nil	Remove	LandsD	-		
T3812	<i>Archontophoenix alexandrae</i>	假檳榔	9	180	3	M	A	A	A	M	-	Nil	Retain	LandsD	LandsD		
T3813	<i>Archontophoenix alexandrae</i>	假檳榔	9	180	3	M	A	A	A	M	-	Nil	Retain	LandsD	LandsD		
T3814	<i>Archontophoenix alexandrae</i>	假檳榔	4	120	3	M	A	A	A	M	-	Nil	Retain	LandsD	LandsD		
T3815	<i>Archontophoenix alexandrae</i>	假檳榔	5	140	3	M	A	A	A	M	-	Nil	Retain	LandsD	LandsD		
T3816	<i>Archontophoenix alexandrae</i>	假檳榔	5	140	3	M	A	A	A	M	-	Nil	Retain	LandsD	LandsD		
T3817	<i>Archontophoenix alexandrae</i>	假檳榔	5	150	4	M	A	A	A	M	-	Nil	Retain	LandsD	LandsD		
T3818	<i>Archontophoenix alexandrae</i>	假檳榔	6	160	4	M	A	A	A	M	-	Nil	Retain	LandsD	LandsD		
T3819	<i>Archontophoenix alexandrae</i>	假檳榔	5	140	4	M	A	A	A	M	-	Nil	Retain	LandsD	LandsD		
T3820	<i>Archontophoenix alexandrae</i>	假檳榔	9	170	4	M	A	A	A	M	-	Nil	Retain	LandsD	LandsD		
T3821	<i>Archontophoenix alexandrae</i>	假檳榔	6	150	4	M	A	A	A	M	-	Nil	Retain	LandsD	LandsD		
T3822	<i>Archontophoenix alexandrae</i>	假檳榔	7	200	5	M	A	A	A	M	-	Nil	Retain	LandsD	LandsD		
T3823	<i>Archontophoenix alexandrae</i>	假檳榔	8	210	4	M	A	A	A	M	-	Nil	Retain	LandsD	LandsD		
T3824	<i>Archontophoenix alexandrae</i>	假檳榔	6	180	3	M	A	A	A	M	-	Nil	Retain	LandsD	LandsD		
T3825	<i>Archontophoenix alexandrae</i>	假檳榔	5	170	3	M	A	A	A	M	-	Nil	Retain	LandsD	LandsD		
T3826	<i>Archontophoenix alexandrae</i>	假檳榔	5	180	3	M	A	A	A	M	-	Nil	Retain	LandsD	LandsD		
T3827	<i>Archontophoenix alexandrae</i>	假檳榔	6	150	3	M	A	A	A	M	-	Nil	Retain	LandsD	LandsD		
T3828	<i>Archontophoenix alexandrae</i>	假檳榔	5	160	4	M	A	A	A	M	-	Nil	Retain	LandsD	LandsD		
T3829	<i>Archontophoenix alexandrae</i>	假檳榔	6	170	4	M	A	A	A	M	-	Nil	Retain	LandsD	LandsD		
T3830	<i>Archontophoenix alexandrae</i>	假檳榔	5	160	4	M	A	A	A	M	-	Nil	Retain	LandsD	LandsD		
T3831	<i>Archontophoenix alexandrae</i>	假檳榔	5	160	4	M	A	A	A	M	-	Nil	Retain	LandsD	LandsD		
T3832	<i>Archontophoenix alexandrae</i>	假檳榔	8	160	4	M	A	A	A	M	-	Nil	Retain	LandsD	LandsD		
T3833	<i>Archontophoenix alexandrae</i>	假檳榔	8	160	4	M	A	A	A	M	-	Nil	Retain	LandsD	LandsD		
T3834	<i>Archontophoenix alexandrae</i>	假檳榔	9	150	4	M	A	A	A	M	-	Nil	Retain	LandsD	LandsD		
T3835	<i>Archontophoenix alexandrae</i>	假檳榔	9	170	5	M	A	A	A	M	-	Nil	Retain	LandsD	LandsD		
T3836	<i>Archontophoenix alexandrae</i>	假檳榔	9	210	4	M	A	A	A	M	-	Nil	Retain	LandsD	LandsD		
T3837	<i>Archontophoenix alexandrae</i>	假檳榔	7	180	4	M	A	A	A	M	-	Nil	Retain	LandsD	LandsD		
T3838	<i>Ficus hispida</i>	對葉榕	3	110	4	L	A	A	A	L	a, c	Nil	Remove	LandsD	-		
T3839	<i>Ligustrum sinense</i>	山指甲	4	130	4	L	A	A	A	L	a, c	Nil	Remove	LandsD	-		
T3840	<i>Ficus hispida</i>	對葉榕	6	220	7	L	A	A	A	L	a, c	Nil	Remove	LandsD	-		
T3841	<i>Acacia confusa</i>	台灣相思	12	300	7	L	P	A	A	L	a, c, f	Nil	Remove	LandsD	-	Climbers	
T3842	<i>Acacia confusa</i>	台灣相思	11	300	5	L	P	A	A	L	a, c, f	Nil	Remove	LandsD	-	Climbers	
T3843	<i>Acacia confusa</i>	台灣相思	9	310	8	L	P	A	A	L	a, c, f	Nil	Remove	LandsD	-	Multi-trunk, Climbers	
T3844	<i>Acacia confusa</i>	台灣相思	7	120	4	L	P	P	A	L	a, c, f	Nil	Remove	LandsD	-	Dieback, Climbers	
T3845	<i>Bridelia tomentosa</i>	土蜜樹	8	100	3	L	P	A	A	L	a, c, f	Nil	Remove	LandsD	-	Climbers	
T3846	<i>Celtis sinensis</i>	朴樹	7	140	4	L	P	A	A	L	a, c, f	Nil	Remove	LandsD	-	Climbers	
T3847	<i>Acacia confusa</i>	台灣相思	10	320	6	L	P	A	A	L	a, c, f	Nil	Remove	LandsD	-	Climbers	
T3848	Dead tree	死樹	5	210	4	L	P	P	P	L	a, c, f	Nil	Remove	LandsD	-	Dead tree	
T3849	<i>Acacia confusa</i>	台灣相思	9	240	5	L	P	A	A	L	a, c, f	Nil	Remove	LandsD	-	Lean, Climbers, multi-trunks	
T3850	<i>Acacia confusa</i>	台灣相思	7	250	5	L	P	A	A	L	a, c, f	Nil	Remove	LandsD	-	Climbers	
T3851	<i>Melia azedarach</i>	苦楝	4	100	4	L	P	A	P	L	a, c, f	Nil	Remove	LandsD	-	Stump, Epicormics, Climbers	
T3852	<i>Litchi chinensis</i>	荔枝	4	130	3	L	A	A	A	L	a, c	Nil	Remove	LandsD	-		
T3853	<i>Ficus microcarpa</i>	細葉榕	7	180	6	L	A	A	A	L	a, c	Nil	Remove	LandsD	-	Not accessible during tree survey	
T3854	<i>Ficus microcarpa</i>	細葉榕	5	260	9	L	A	A	A	L	a, c	Nil	Remove	LandsD	-	Not accessible during tree survey	
T3855	<i>Ficus microcarpa</i>	細葉榕	9	400	10	L	A	A	A	L	a, c	Nil	Remove	LandsD	-	Not accessible during tree survey	
T3856	<i>Ficus microcarpa</i>	細葉榕	9	360	9	L	A	A	A	L	a, c	Nil	Remove	LandsD	-	Not accessible during tree survey	
T3857	<i>Ficus microcarpa</i>	細葉榕	8	270	7	L	A	A	A	L	a, c	Nil	Remove	LandsD	-	Not accessible during tree survey	
T3858	<i>Dimocarpus longan</i>	龍眼	5	130	6	L	A	A	A	L	a, c	Nil	Remove	LandsD	-		
T3859	<i>Ficus microcarpa</i>	細葉榕	8	450	10	L	A	A	A	L	a, c	Nil	Remove	LandsD	-	Not accessible during tree survey	
T3860	<i>Ficus microcarpa</i>	細葉榕	8	170	8	L	A	A	A	L	a, c	Nil	Remove	LandsD	-	Not accessible during tree survey	
T3861	<i>Ficus microcarpa</i>	細葉榕	9	350	7	L	A	A	A	L	a, c	Nil	Remove	LandsD	-	Not accessible during tree survey	
T3862	<i>Mangifera indica</i>	杧果	4	140	3	L	A	A	A	L	a, c	Nil	Remove	LandsD	-		
T3863	<i>Artocarpus heterophyllus</i>	菠蘿蜜	3	120	3	L	A	A	A	L	a, c	Nil	Remove	LandsD	-		

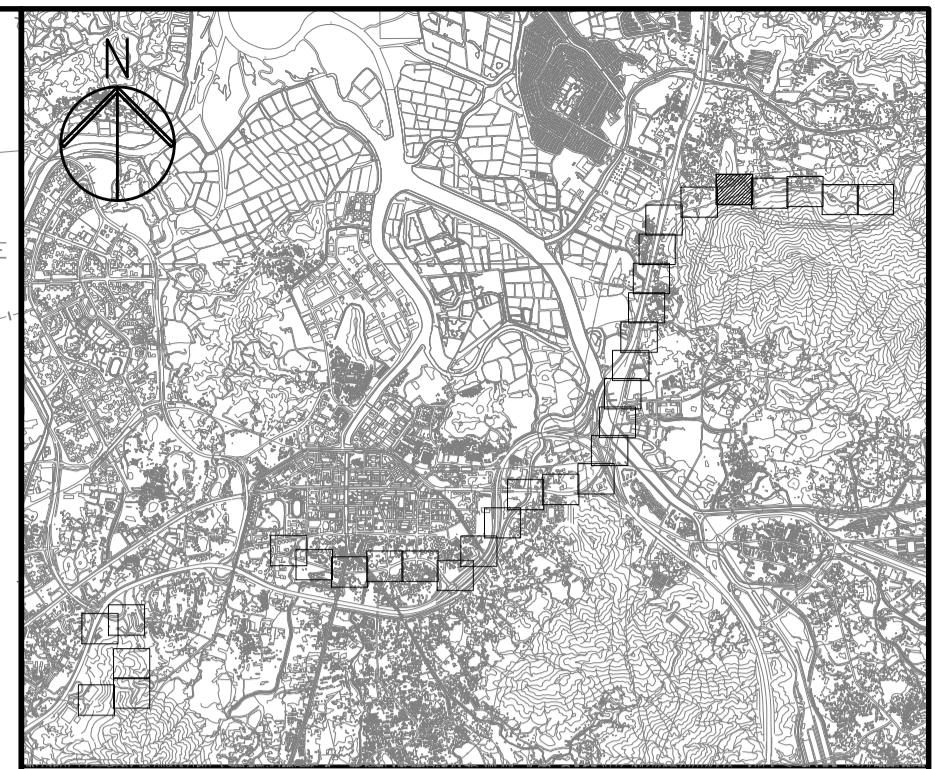
Tree Assessment Schedule - Upgrading of existing DN1400 trunk mains to DN1600 (section between San Tam Road and Ching Yau Road)
 Project Title: Tree Survey for Laying of fresh water trunk mains from the Ngau Tam Mei Fresh Water Primary Reservoir to Tan Kwai Tsuen - Investigation
 Agreement No.: CE 80/2020 (WS)
 Date of Tree Survey: 19 January 2023

Tree No.	Species		Measurements			Amenity value	Form	Health condition	Structural condition	Suitability for Transplanting		Conservation status	Recommendation (retain/transplant/remove)	Maintenance department to provide		Additional Remarks	HyD SIMAR slope feature (If any)
	Scientific name	Chinese name	Height (m)	DBH (mm)	Crown Spread (m)	(high(H)/medium(M)/low(L))	(good(G)/average(A)/poor(P))	(good(G)/average(A)/poor(P))	(good(G)/average(A)/poor(P))	(high(H)/medium(M)/low(L))	Remarks*			Before	After		
T3864	<i>Ziziphus jujuba</i>	毒	3	110	4	L	P	A	A	L	a, c, f	Nil	Remove	LandsD	-	Lean	
T3865	<i>Ficus microcarpa</i>	細葉榕	7	320	6	L	A	A	A	L	a, c	Nil	Remove	LandsD	-	Not accessible during tree survey	
T3866	<i>Ficus microcarpa</i>	細葉榕	9	190	8	L	A	A	A	L	a, c	Nil	Remove	LandsD	-	Not accessible during tree survey	
T3867	<i>Ficus microcarpa</i>	細葉榕	8	400	7	L	A	A	A	L	a, c	Nil	Remove	LandsD	-	Not accessible during tree survey	
T3868	<i>Ficus microcarpa</i>	細葉榕	10	450	9	L	A	A	A	L	a, c	Nil	Remove	LandsD	-	Not accessible during tree survey	
T3869	<i>Ficus microcarpa</i>	細葉榕	10	350	8	L	A	A	A	L	a, c	Nil	Remove	LandsD	-	Not accessible during tree survey	
T3870	<i>Eucalyptus tereticornis</i>	細葉桉	17	1000	13	L	P	A	A	L	a, c, d, f	Nil	Retain	LandsD	LandsD	Tree of Particular Interest (DBH of 1m or more); Epiphytic plants (<i>Ficus microcarpa</i>)	
T3871	<i>Cratogeomys unilocularis</i>	樹頭菜	8	210	5	L	A	A	A	L	a, c	Nil	Remove	LandsD	-	Co-dominant trunks	
T3872	<i>Cratogeomys unilocularis</i>	樹頭菜	6	150	4	L	A	A	A	L	a, c	Nil	Retain	LandsD	LandsD		
T3873	<i>Cratogeomys unilocularis</i>	樹頭菜	7	140	4	L	A	A	A	L	a, c	Nil	Retain	LandsD	LandsD		
T3874	<i>Cratogeomys unilocularis</i>	樹頭菜	4	130	3	L	A	A	A	L	a, c	Nil	Retain	LandsD	LandsD		
T3875	<i>Cratogeomys unilocularis</i>	樹頭菜	9	250	6	L	A	A	A	L	a, c	Nil	Retain	LandsD	LandsD		
T3876	<i>Ficus microcarpa</i>	細葉榕	9	370	6	L	A	A	A	L	a, c	Nil	Retain	LandsD	LandsD		
T3877	<i>Cratogeomys unilocularis</i>	樹頭菜	5	180	4	L	A	A	A	L	a, c	Nil	Retain	LandsD	LandsD		
T3878	<i>Cinnamomum camphora</i>	樟	5	170	4	L	A	A	A	L	a, c	Nil	Retain	LandsD	LandsD		
T3879	<i>Celtis sinensis</i>	朴樹	5	150	3	L	A	A	A	L	a, c	Nil	Retain	LandsD	LandsD		
T3880	<i>Ligustrum sinense</i>	山指甲	4	120	3	L	A	A	A	L	a, c	Nil	Retain	LandsD	LandsD		
T3881	<i>Ficus microcarpa</i>	細葉榕	6	540	5	L	A	A	A	L	a, c	Nil	Retain	LandsD	LandsD		
T3882	<i>Livistona chinensis</i>	蒲葵	5	240	4	L	A	A	A	L	a, c	Nil	Retain	LandsD	LandsD		
T3883	<i>Bauhinia × blakeana</i>	洋紫荊	3	100	3	L	A	A	A	L	a, c	Nil	Retain	LandsD	LandsD		
T3884	<i>Leucaena leucocephala</i>	銀合歡	5	100	3	L	P	A	P	L	a, g	Nil	Retain	LandsD	LandsD	Broken top, Cavity	
T3885	<i>Livistona chinensis</i>	蒲葵	7	240	6	L	A	A	A	L	a, c	Nil	Retain	LandsD	LandsD		
T3886	<i>Livistona chinensis</i>	蒲葵	4	260	3	L	A	A	A	L	a, c	Nil	Retain	LandsD	LandsD		
T3887	<i>Livistona chinensis</i>	蒲葵	5	270	4	L	A	A	A	L	a, c	Nil	Retain	LandsD	LandsD		
T3888	<i>Morus alba</i>	桑	4	110	3	L	P	A	P	L	a, c	Nil	Remove	LandsD	-		
T3889	<i>Morus alba</i>	桑	3	100	2	L	P	A	P	L	a, c	Nil	Remove	LandsD	-		
T3890	<i>Morus alba</i>	桑	5	110	3	L	P	A	P	L	a, c, f	Nil	Remove	LandsD	-	Climbers	
T3891	<i>Macaranga tanarius var. tomentosa</i>	血桐	6	190	4	L	P	A	A	L	a, c, f	Nil	Remove	LandsD	-	Lean	
T3892	<i>Celtis sinensis</i>	朴樹	6	250	5	L	P	A	A	L	a, c, f	Nil	Remove	LandsD	-	Climbers	
T3893	<i>Ficus hispida</i>	對葉榕	4	200	5	L	P	A	A	L	a, c, f	Nil	Remove	LandsD	-	Climbers	
T3894	<i>Acacia confusa</i>	台灣相思	6	180	6	L	P	A	A	L	a, c, f	Nil	Remove	LandsD	-	Climbers	
T3895	<i>Acacia confusa</i>	台灣相思	7	240	5	L	P	A	A	L	a, c, f	Nil	Remove	LandsD	-	Climbers	
T3896	<i>Acacia confusa</i>	台灣相思	7	210	6	L	P	A	A	L	a, c, f	Nil	Remove	LandsD	-	Climbers, girdled by other plants	
T3897	<i>Macaranga tanarius var. tomentosa</i>	血桐	6	130	4	L	P	A	P	L	a, c, f	Nil	Remove	LandsD	-	Lean, Broken top, Climbers	
T3898	<i>Acacia confusa</i>	台灣相思	5	130	3	L	P	A	A	L	a, c, f	Nil	Remove	LandsD	-	Climbers	
T3899	<i>Ficus hispida</i>	對葉榕	7	240	5	L	P	A	A	L	a, c, f	Nil	Remove	LandsD	-	Climbers	
T3900	<i>Ligustrum sinense</i>	山指甲	3	100	2	L	P	A	A	L	a, c, f	Nil	Remove	LandsD	-	Climbers	
T3901	<i>Ficus hispida</i>	對葉榕	5	150	4	L	P	A	A	L	a, c, f	Nil	Remove	LandsD	-	Climbers	
T3902	<i>Leucaena leucocephala</i>	銀合歡	4	110	3	L	P	A	A	L	a, g	Nil	Remove	LandsD	-	Climbers	
T3903	<i>Leucaena leucocephala</i>	銀合歡	4	100	3	L	P	A	A	L	a, g	Nil	Remove	LandsD	-	Climbers	
T3904	<i>Leucaena leucocephala</i>	銀合歡	4	130	2	L	P	A	A	L	a, g	Nil	Remove	LandsD	-	Climbers	
T3905	<i>Melia azedarach</i>	苦楝	9	150	4	L	P	A	A	L	a, c, f	Nil	Remove	LandsD	-	Climbers	
T3906	<i>Acacia confusa</i>	台灣相思	6	200	4	L	P	A	A	L	a, c, f	Nil	Remove	LandsD	-	Climbers	
T3907	<i>Celtis sinensis</i>	朴樹	5	160	3	L	P	A	A	L	a, c, f	Nil	Remove	LandsD	-	Climbers	
T3908	<i>Lophostemon confertus</i>	紅藤木	9	260	6	L	P	A	A	L	a, c, f	Nil	Remove	LandsD	-	Climbers	
T3909	<i>Ficus hispida</i>	對葉榕	4	100	3	L	P	A	A	L	a, c, f	Nil	Remove	LandsD	-	Lean	
T3910	<i>Acacia confusa</i>	台灣相思	7	170	4	L	P	A	A	L	a, c, f	Nil	Remove	LandsD	-	Climbers	
T3911	<i>Lophostemon confertus</i>	紅藤木	9	250	7	L	P	A	A	L	a, c, f	Nil	Remove	LandsD	-	Climbers	

Remarks on Suitability for Transplanting.

- (a) low amenity value
- (b) irrecoverable form after transplanting (e.g. if substantial crown and root pruning are necessary to facilitate the transplanting)
- (c) low survival rate after transplanting
- (d) very large size (unless the feasibility to transplant has been considered financially reasonable and technically feasible during the feasibility stage)
- (e) with evidence or notable signs of over-maturity and onset of senescence
- (f) with poor health, structure or form (e.g. imbalanced form, leaning, with major cavity/cracks/splits)
- (g) undesirable species (e.g. *Leucaena leucocephala* which is an invasive tree)

DO NOT SCALE DRAWING. CHECK ALL DIMENSIONS ON SITE.
ALL RIGHTS RESERVED.
© OVE ARUP & PARTNERS HONG KONG LIMITED.



KEY PLAN

LEGEND :

- PROPOSED UPGRADING WORKS
- PROPOSED WATER MAIN
- WORKS AREA FOR JACKING PIT
- WORKS AREA FOR RECEIVING PIT
- WORKS AREA FOR TRENCH EXCAVATION
- REGISTERED GEOTECHNICAL FEATURES:
R : RETAINING WALL
C : CUT SLOPE
F : FILL SLOPE
DT : DISTURBED TERRAIN
FR : FILL SLOPE WITH RETAINING WALL
- 2SE-C/FR61
- MTRCL RAILWAY PROTECTION AREA
- PROJECT BOUNDARY
- EXISTING TREE TO BE RETAINED
- ⊗ EXISTING TREE TO BE REMOVED
- ⊗ EXISTING WEED TREE TO BE REMOVED (NO TRPP REQUIRED)
- TRPP TO BE CARRIED OUT BY CE 80/2020 (WS)

Rev	Description	By	Date

Consultant
ARUP

Contract No. and Title
Agreement No. CE 62/2022 (WS)
Laying of Fresh Water Trunk Mains from Ngau Tam Mei Fresh Water Primary Service Reservoir to Tan Kwai Tsuen and Modification of Raw Water Tunnel Junction (Chamber G) – Design and Construction

Drawing title
TREE SURVEY PLAN - DN1600 BETWEEN SAN TAM ROAD AND CHING YAU ROAD (SHEET 1 OF 3)

WSD Drawing no.		Rev.	
W18495 / SKT / 006		A	
Drawn	Date	Checked	Approved
WC	05/23	ST	MS
Scale	Status		PRELIMINARY
1:1000 @A3			

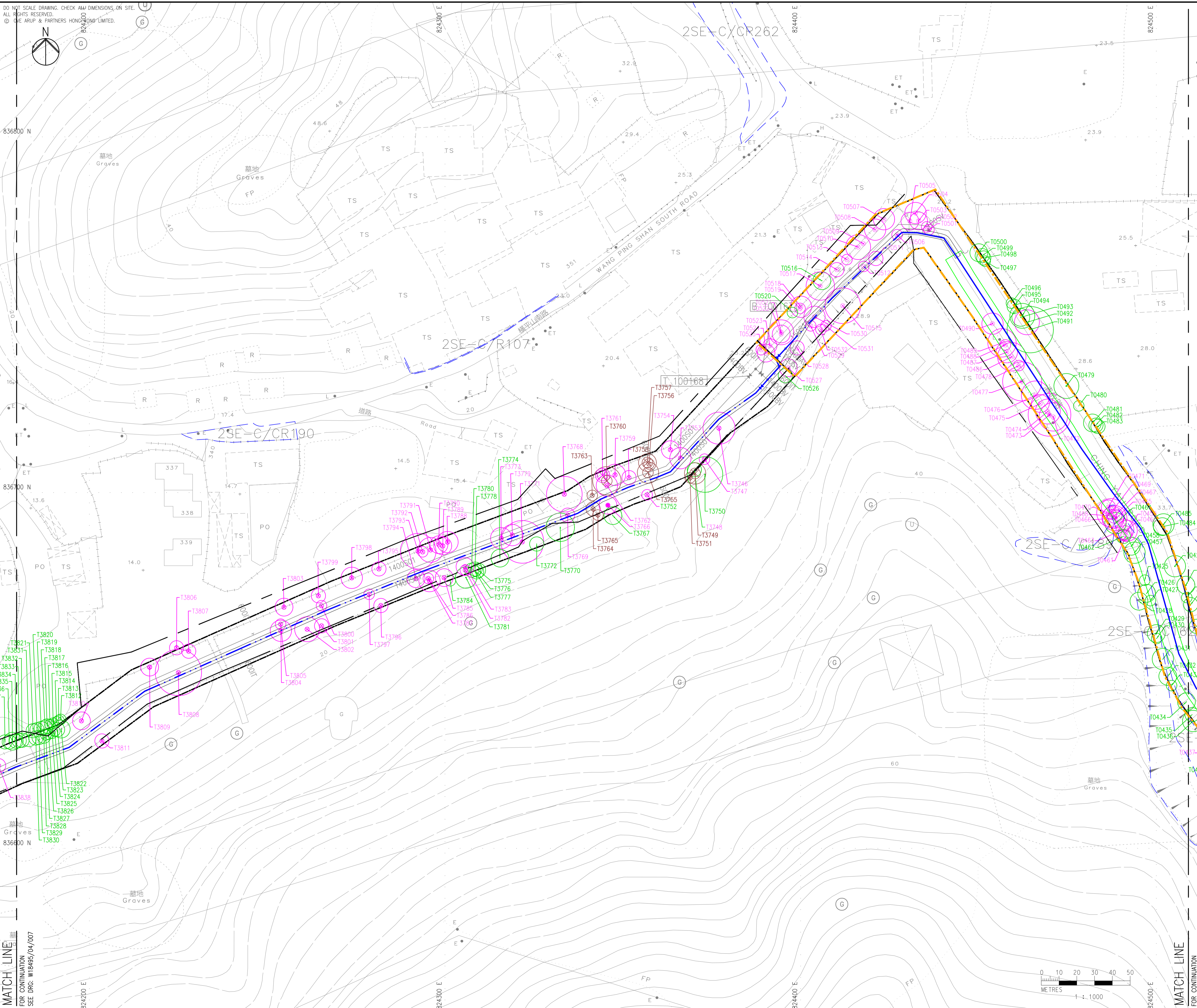
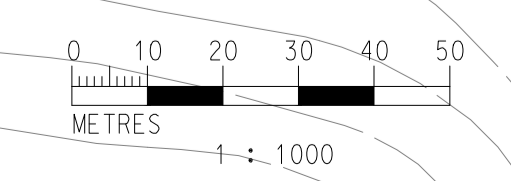
COPYRIGHT RESERVED



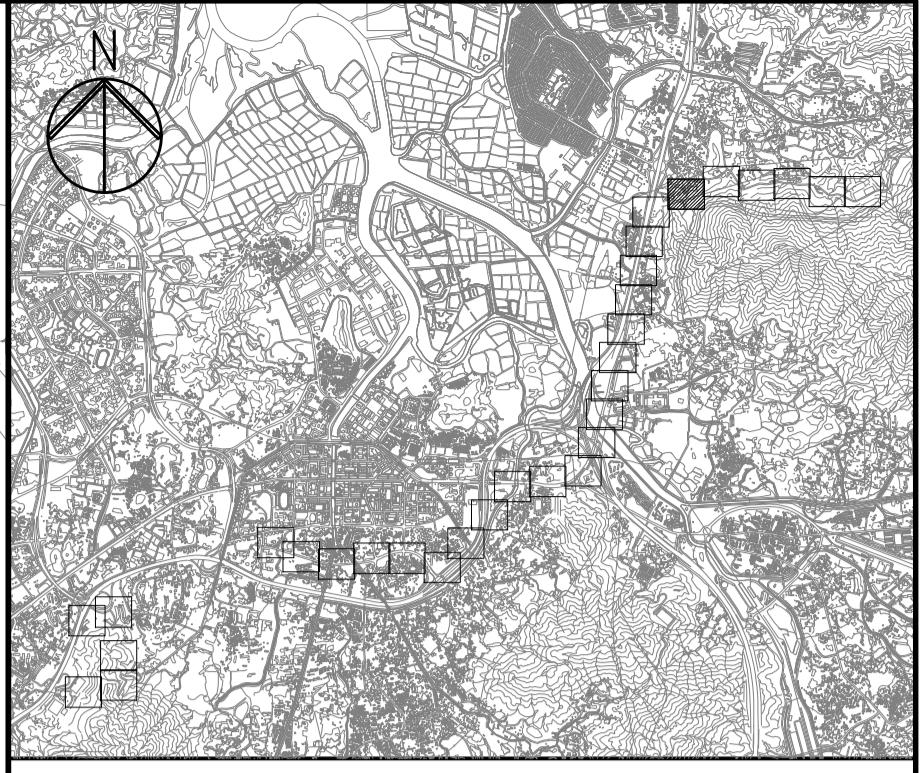
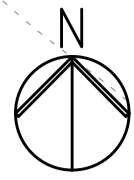
Printed by : NATHAN MAN
Wednesday, July 12, 2023 7:59:36 PM
Filename : J:\294000\294720-00 CE62-2022 NTM FW MAIN LAYING\05_INT_PROJ\DATA\80 BIM\82 CIVIL\02-CAD\CIVIL W18495_04_006.DWG

MATCH LINE
FOR CONTINUATION
SEE DRG: W18495/04/007

MATCH LINE
FOR CONTINUATION
SEE DRG: W18495/01/005



DO NOT SCALE DRAWING. CHECK ALL DIMENSIONS ON SITE.
ALL RIGHTS RESERVED.
© ARUP & PARTNERS HONG KONG LIMITED.



KEY PLAN

- LEGEND :
- PROPOSED UPGRADING WORKS
 - PROPOSED WATER MAIN
 - WORKS AREA FOR JACKING PIT
 - WORKS AREA FOR RECEIVING PIT
 - WORKS AREA FOR TRENCH EXCAVATION
 - REGISTERED GEOTECHNICAL FEATURES:
 R : RETAINING WALL
 C : CUT SLOPE
 F : FILL SLOPE
 DT : DISTURBED TERRAIN
 FR : FILL SLOPE WITH RETAINING WALL
 - 2SE-C/FR61
 - MTRCL RAILWAY PROTECTION AREA
 - PROJECT BOUNDARY
 - EXISTING TREE TO BE RETAINED
 - EXISTING TREE TO BE REMOVED
 - EXISTING WEED TREE TO BE REMOVED (NO TRPP REQUIRED)
 - TRPP TO BE CARRIED OUT BY CE 80/2020 (WS)

Rev	Description	By	Date

Consultant
ARUP

Contract No. and Title
Agreement No. CE 62/2022 (WS)
 Laying of Fresh Water Trunk Mains from Ngau Tam Mei Fresh Water Primary Service Reservoir to Tan Kwai Tsuen and Modification of Raw Water Tunnel Junction (Chamber G) – Design and Construction

Drawing title
TREE SURVEY PLAN - DN1600 BETWEEN SAN TAM ROAD AND CHING YAU ROAD (SHEET 2 OF 3)

WSD Drawing no.		Rev.	
W18495 / SKT / 007		A	
Drawn	Date	Checked	Approved
WC	05/23	ST	MS
Scale	Status		PRELIMINARY
1:1000 @A3			

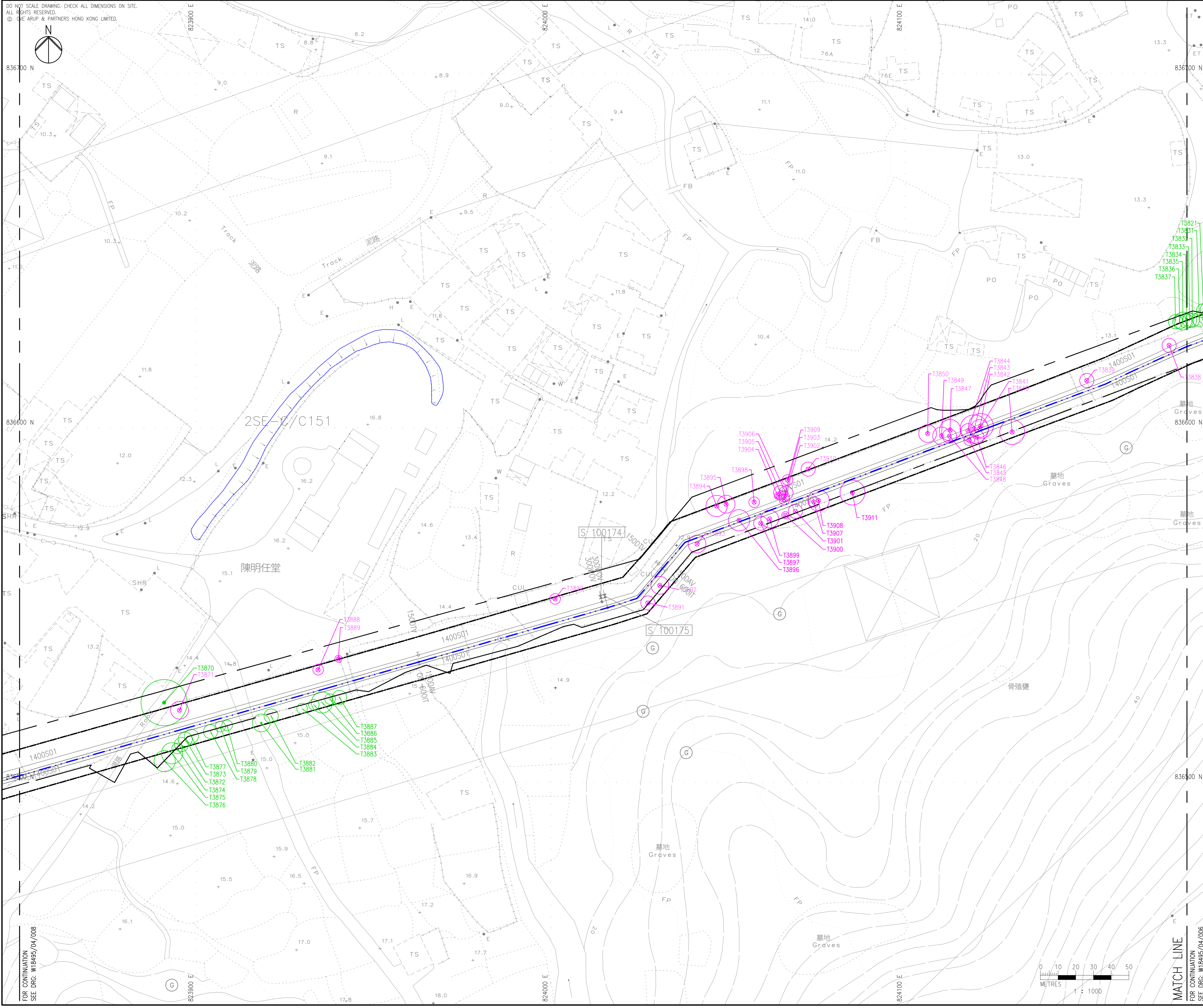
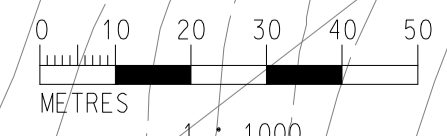
COPYRIGHT RESERVED



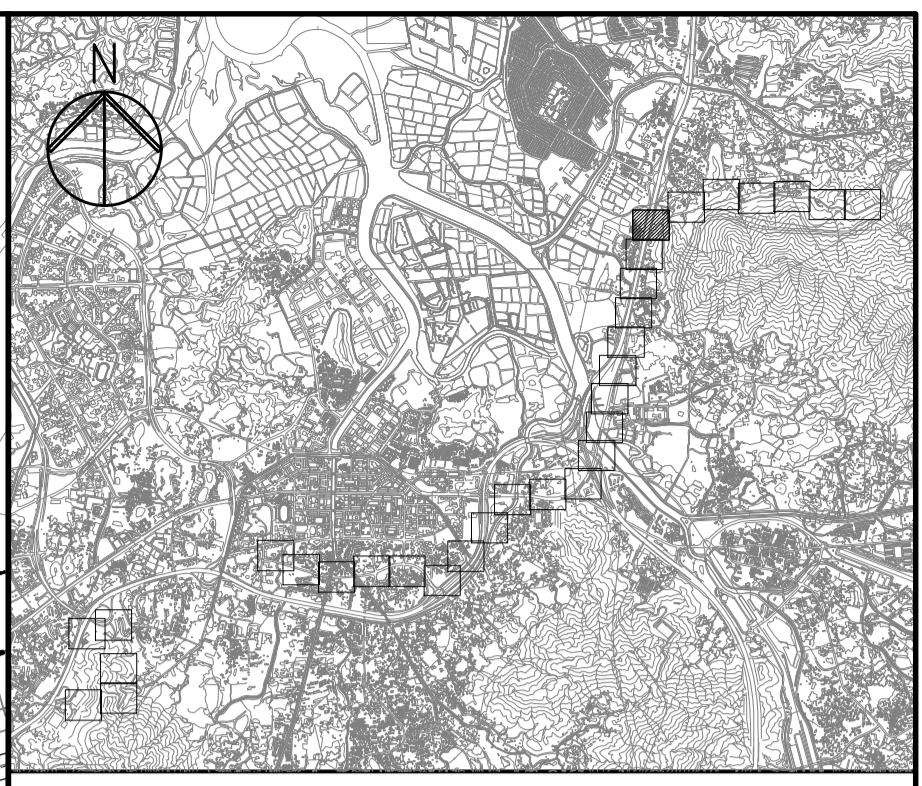
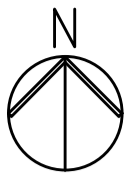
Printed by : NATHAN MAN
 Wednesday, July 12, 2023 8:09:59 PM
 Filename : J:\294000\294720-00 CE62-2022 NTM FW MAIN LAYING\05_INT_PROJ\DATA\80 BIM\82 CIVIL\02-CAD\CIVIL\W18495_04_007.DWG

FOR CONTINUATION
 SEE DRG: W18495/04/008

MATCH LINE
 FOR CONTINUATION
 SEE DRG: W18495/04/008



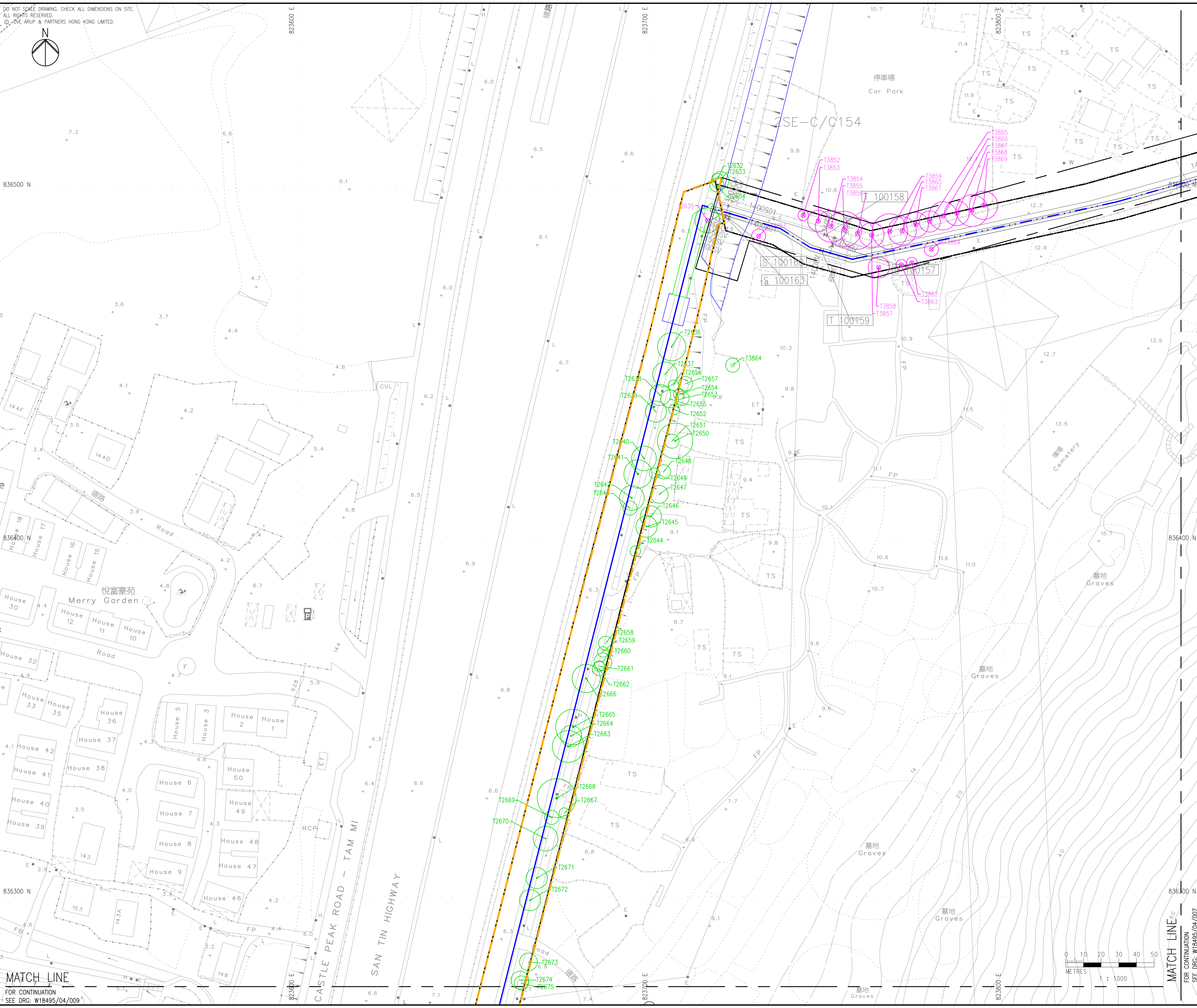
DO NOT SCALE DRAWING. CHECK ALL DIMENSIONS ON SITE.
ALL RIGHTS RESERVED.
© ARUP & PARTNERS HONG KONG LIMITED.



KEY PLAN

- LEGEND :
- PROPOSED UPGRADING WORKS
 - PROPOSED WATER MAIN
 - WORKS AREA FOR JACKING PIT
 - WORKS AREA FOR RECEIVING PIT
 - WORKS AREA FOR TRENCH EXCAVATION
- REGISTERED GEOTECHNICAL FEATURES:
- R : RETAINING WALL
 - C : CUT SLOPE
 - F : FILL SLOPE
 - DT : DISTURBED TERRAIN
 - FR : FILL SLOPE WITH RETAINING WALL
- 2SE-C/FR61
 - MTRCL RAILWAY PROTECTION AREA
 - PROJECT BOUNDARY
 - EXISTING TREE TO BE RETAINED
 - EXISTING TREE TO BE REMOVED
 - EXISTING WEED TREE TO BE REMOVED (NO TRPP REQUIRED)
 - TRPP TO BE CARRIED OUT BY CE 80/2020 (WS)

Printed by : NATHAN MAN
Wednesday, July 12, 2023 8:11:28 PM
Filename : J:\294000\294720-00 CE62-2022 NTM FW MAIN LAYING 05_INT_PROJ\DATA\80 BIM\82 CIVIL\02-CAD\CIVIL\W18495_04_008.DWG



Rev	Description	By	Date

Consultant
ARUP

Contract No. and Title
Agreement No. CE 62/2022 (WS)
Laying of Fresh Water Trunk Mains from Ngau Tam Mei Fresh Water Primary Service Reservoir to Tan Kwai Tsuen and Modification of Raw Water Tunnel Junction (Chamber G) – Design and Construction

Drawing title
TREE SURVEY PLAN - DN1600 BETWEEN SAN TAM ROAD AND CHING YAU ROAD (SHEET 3 OF 3)

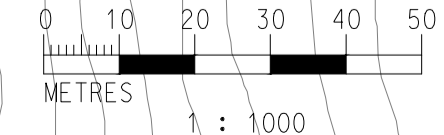
#SD Drawing no.		Rev.	
W18495 / SKT / 008		A	
Drawn	Date	Checked	Approved
WC	05/23	ST	MS
Scale	Status		
1:1000 @A3	PRELIMINARY		

COPYRIGHT RESERVED



MATCH LINE
FOR CONTINUATION
SEE DRG. W18495/04/009

MATCH LINE
FOR CONTINUATION
SEE DRG. W18495/04/007

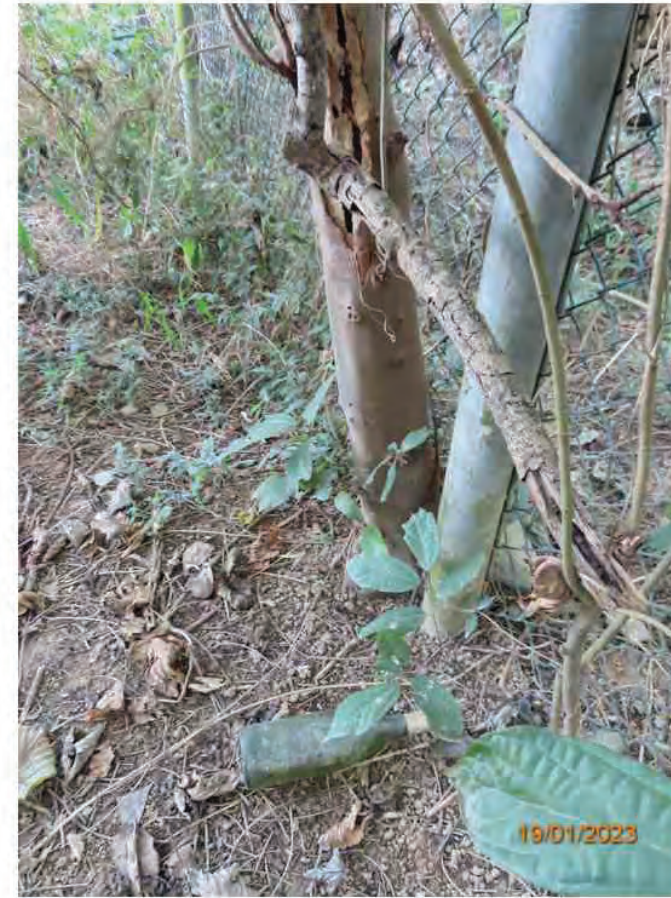




T3746-Overview



T3746-Root



T3747-Root



T3747-Tag



T3746-Tag



T3747-Overview



T3747-Trunk split (1)



T3747-Trunk split (2)



T3748-Overview



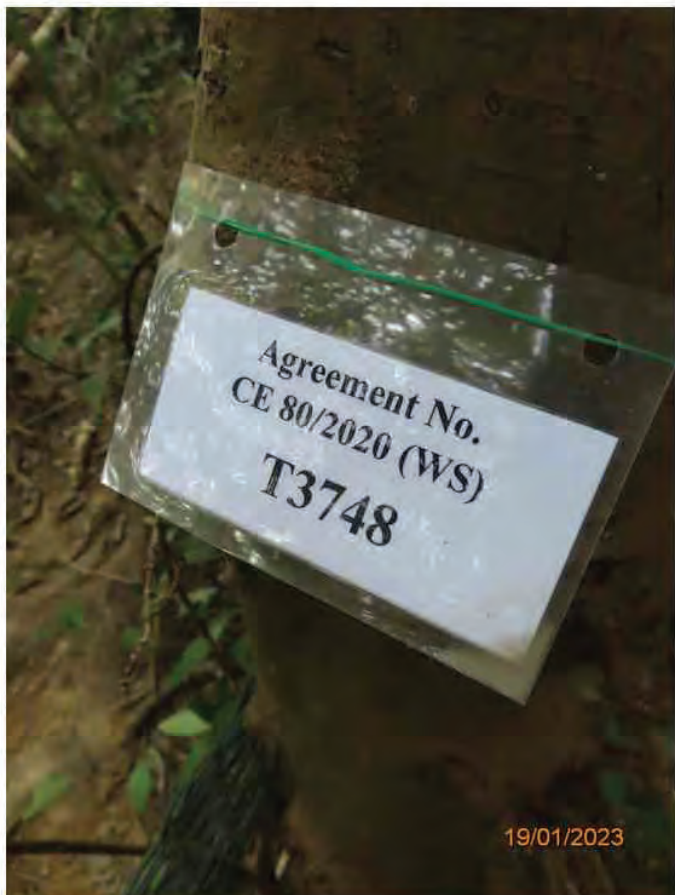
T3748-root



T3749-Overview_Crown



T3749-Overview_Trunk



T3748-Tag



T3749-Collapsed



T3749-Root



T3749-Tag



T3750-Overview



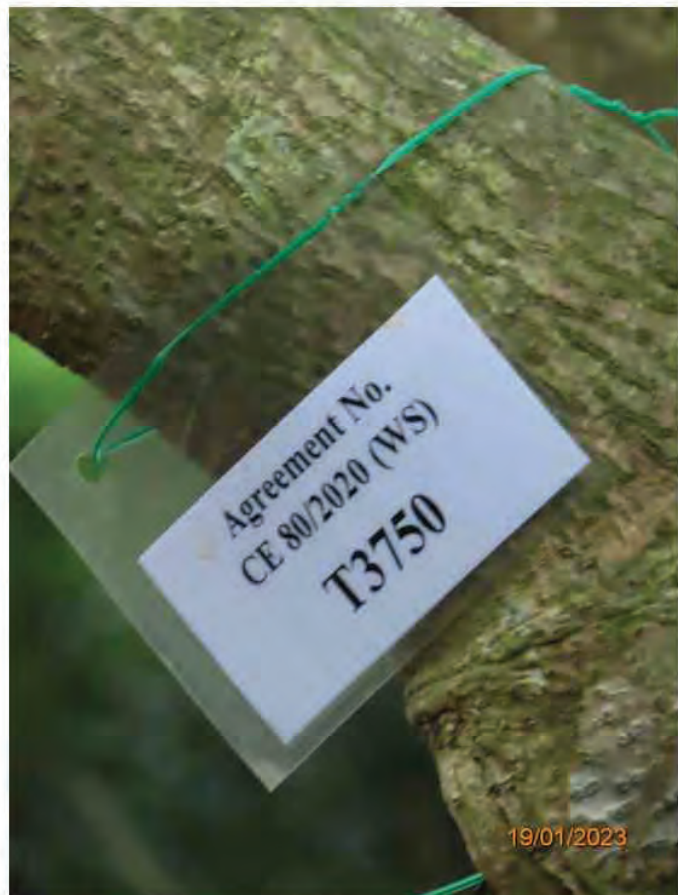
T3750-Root



T3751-Root



T3751-Tag



T3750-Tag



T3751-Overview



T3752-Overview



T3752-Root



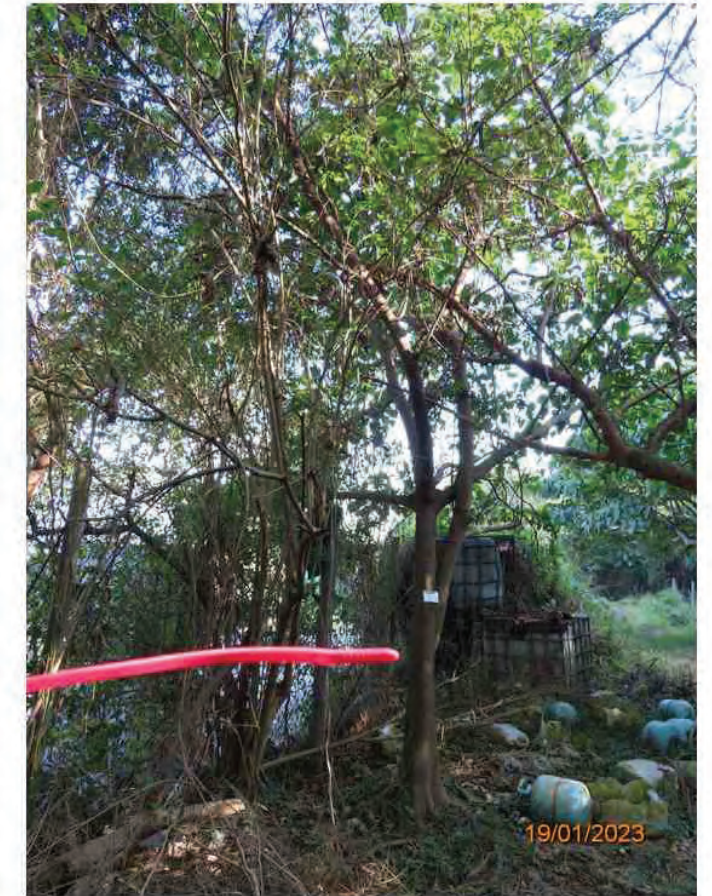
T3752-Tag



T3753-Overview



T3754-Included bark



T3754-Overview



T3753-Root



T3753-Tag



T3754-Root



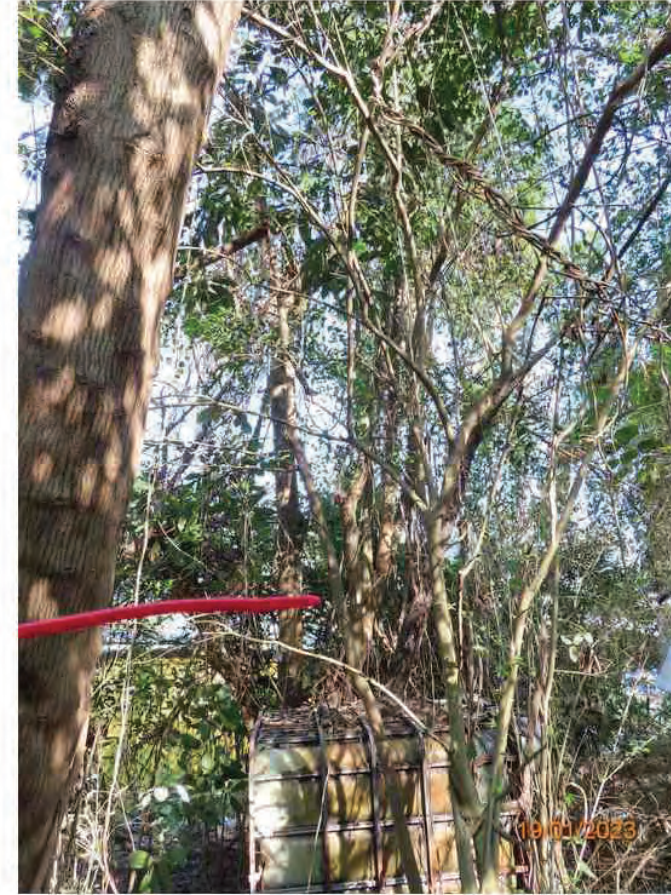
T3754-Tag



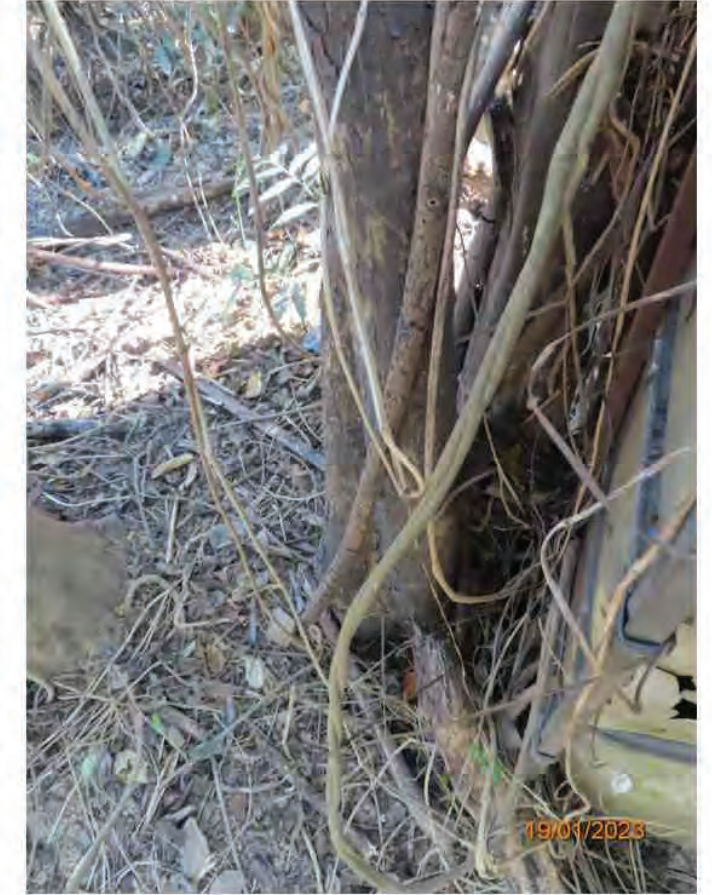
T3755-Included bark



T3755-Overview



T3756-Overview



T3756-Root



T3755-Root



T3755-Tag



T3756-Tag



T3757-Overview



T3757-Root



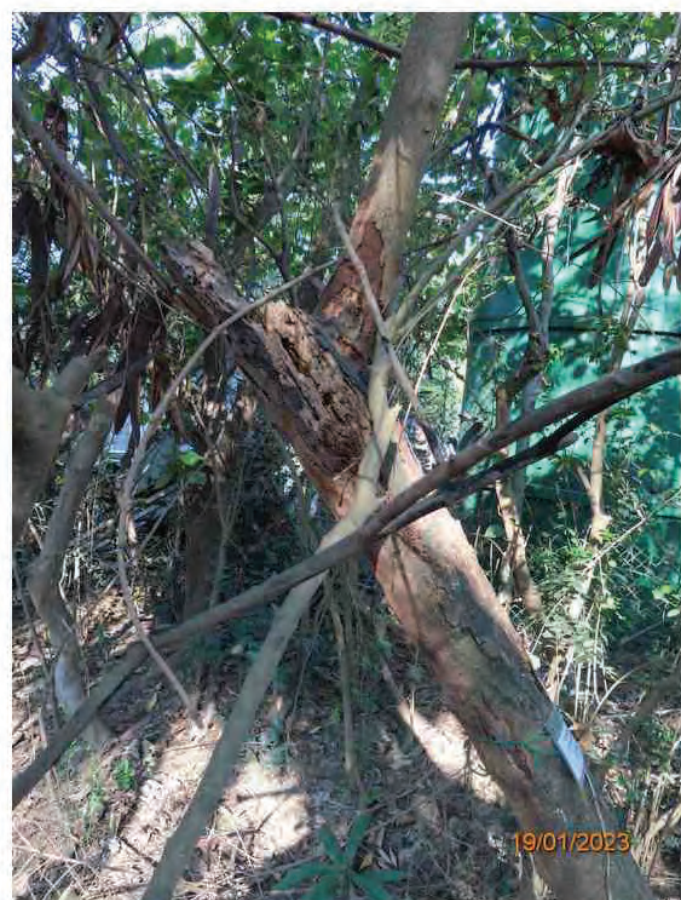
T3757-Tag



T3758-Root



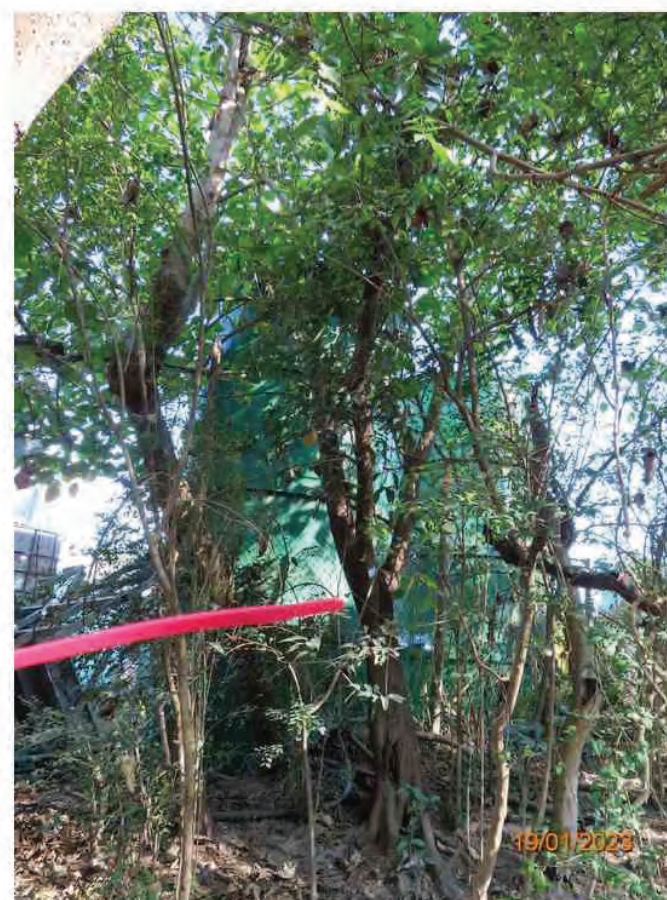
T3758-Tag



T3758-Broken top



T3758-Overview



T3759-Overview



T3759-Root



T3759-Tag



T3760-Overview_Crown



T3760-Tag



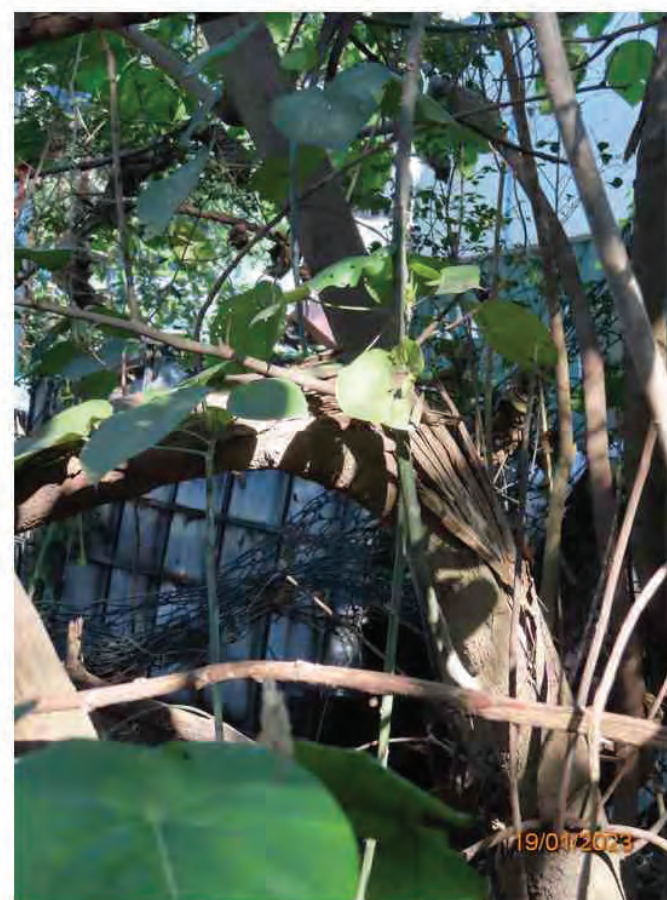
T3761-Collapsed (1)



T3760-Overview_Trunk



T3760-Root



T3761-Collapsed (2)



T3761-Overview



T3761-Root



T3761-Tag



T3762-Tag



T3763-Overview



T3762-Overview



T3762-Root



T3763-Root



T3763-Tag



T3764-Collapsed



T3764-Overview



T3765-Overview



T3765-Root



T3764-Root



T3764-Tag



T3765-Tag



T3766-Overview



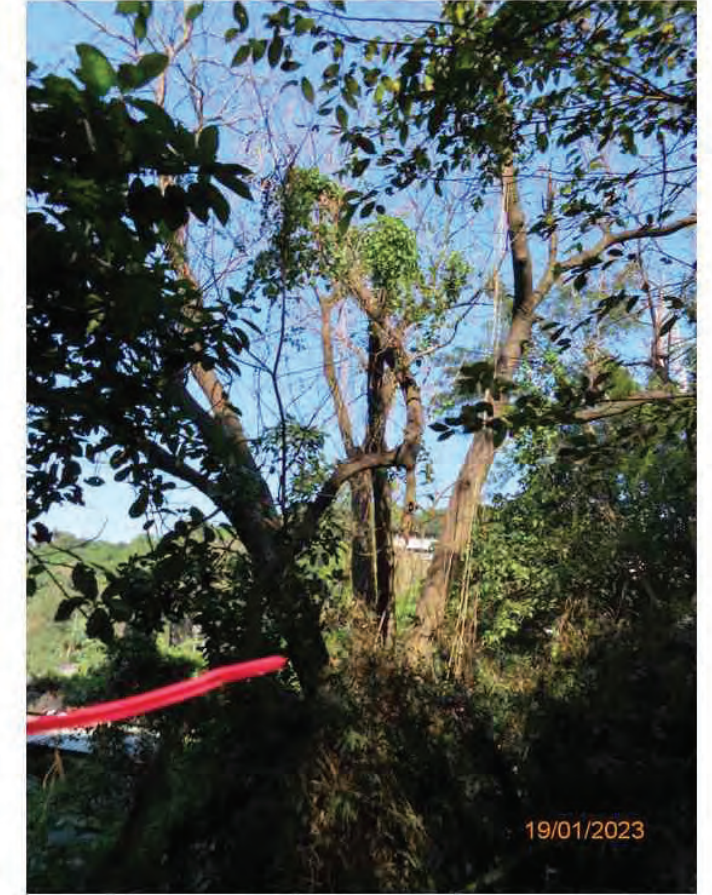
T3766-Root



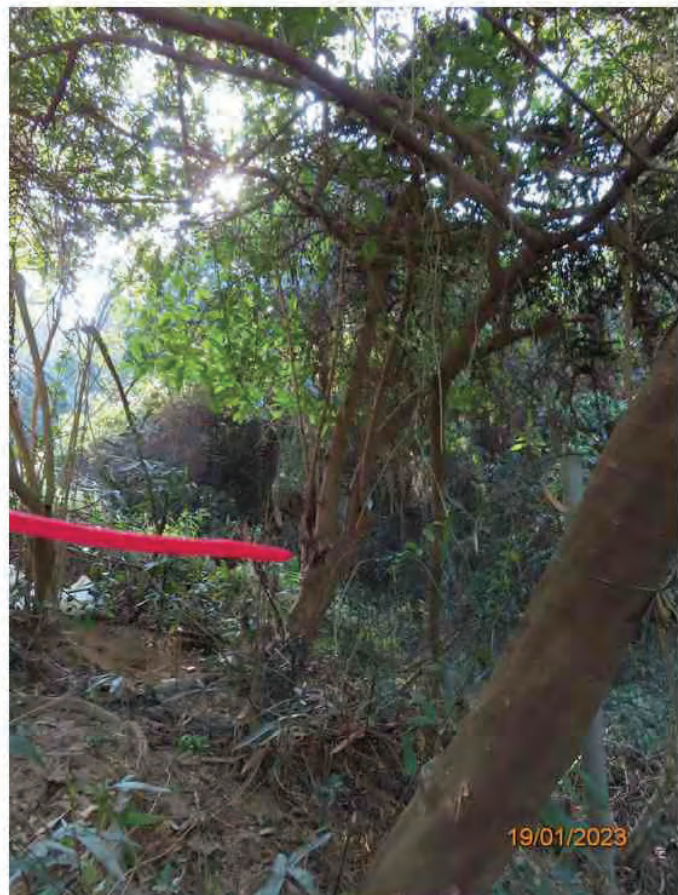
T3766-Tag



T3767-Tag



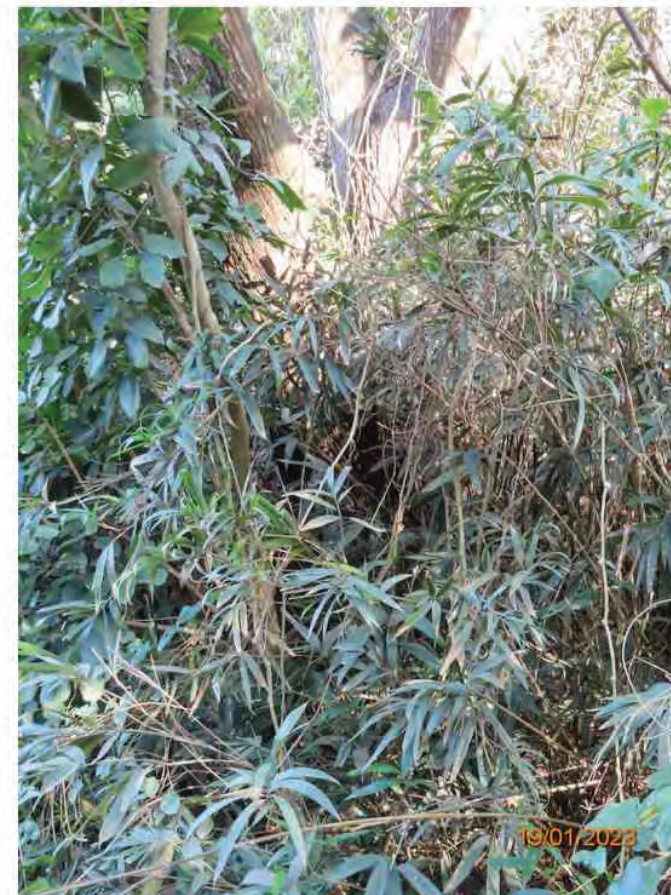
T3768-Overview



T3767-Overview



T3767-Root



T3768-Root



T3768-Tag



T3769-Overview



T3769-Root



T3770-Root



T3770-Tag



T3769-Tag



T3770-Overview



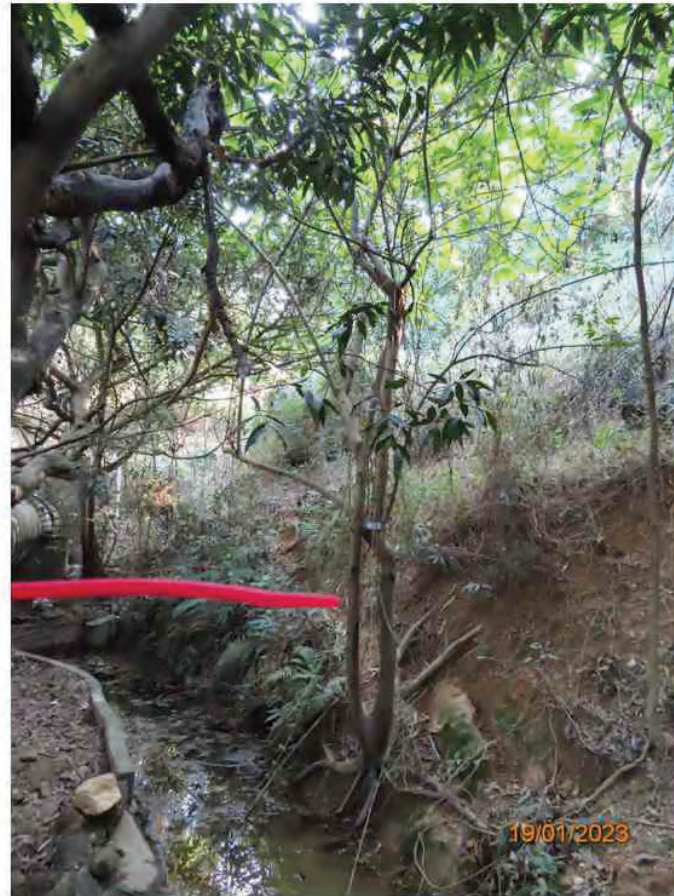
T3771-Overview



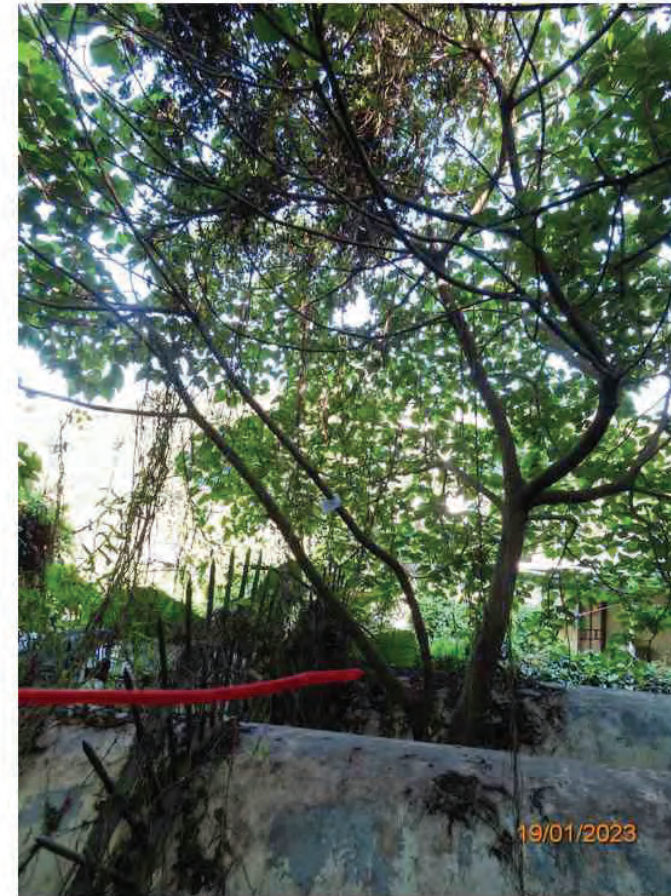
T3771-Root



T3771-Tag



T3772-Overview



T3773-Overview



T3773-Root



T3772-Root



T3772-Tag



T3773-Tag



T3774-Overview



T3774-Root



T3774-Tag



T3775-Tag



T3776-Overview



T3775-Overview



T3775-Root



T3776-Root



T3776-Tag



T3777-Overview



T3777-Root



T3778-Root



T3778-Tag



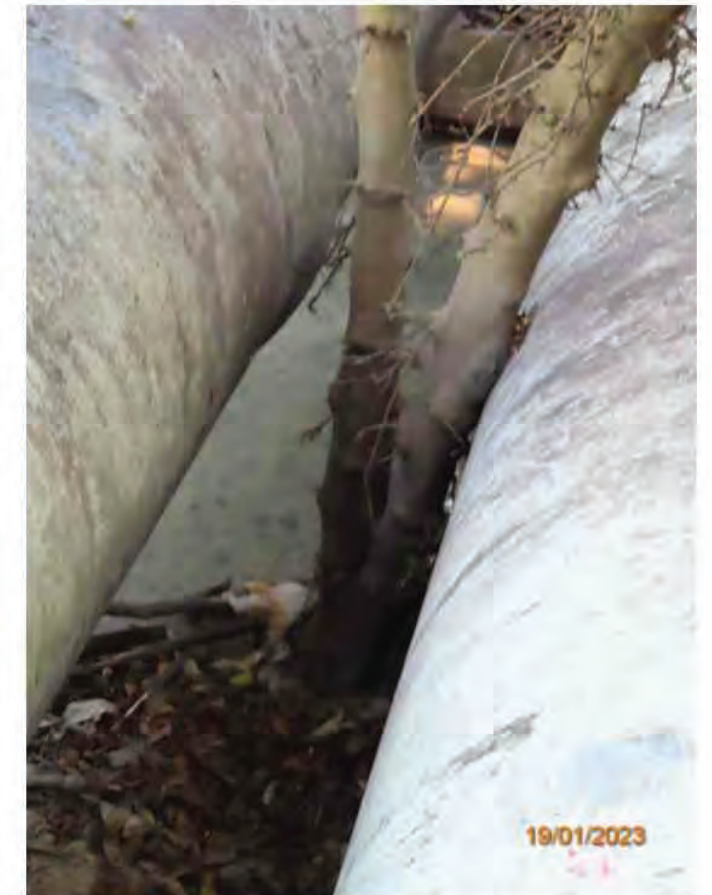
T3777-Tag



T3778-Overview



T3779-Overview



T3779-Root



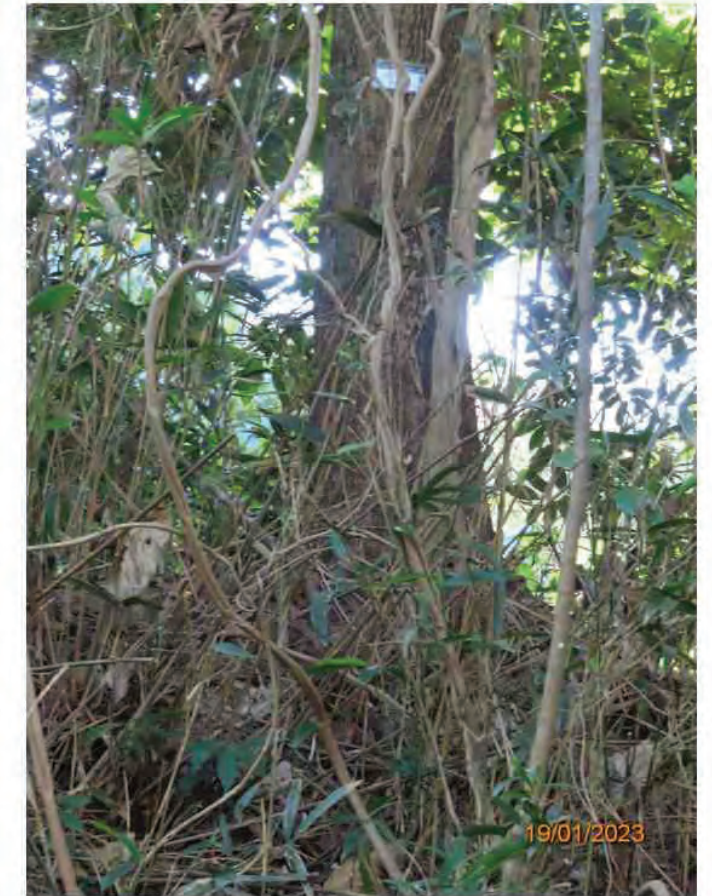
T3779-Tag



T3780-Overview



T3781-Overview



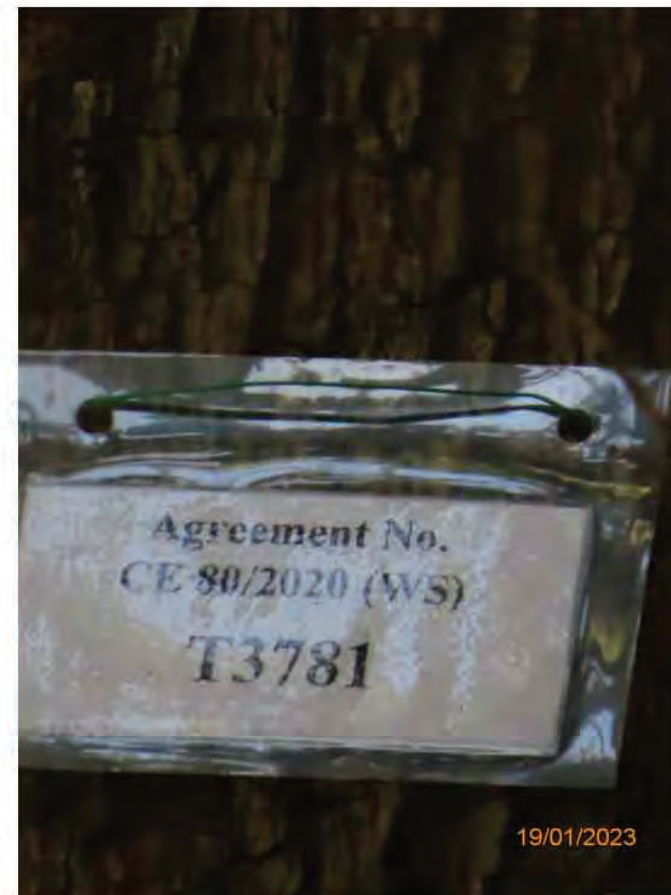
T3781-Root



T3780-Root



T3780-Tag



T3781-Tag



T3782-Overview



T3782-Root



T3782-Tag



T3783-Tag



T3784-Overview



T3783-Overview



T3783-Root



T3784-Root



T3784-Tag



T3785-Overview



T3785-Root



T3786-Root



T3786-Tag



T3785-Tag



T3786-Overview



T3787-Overview



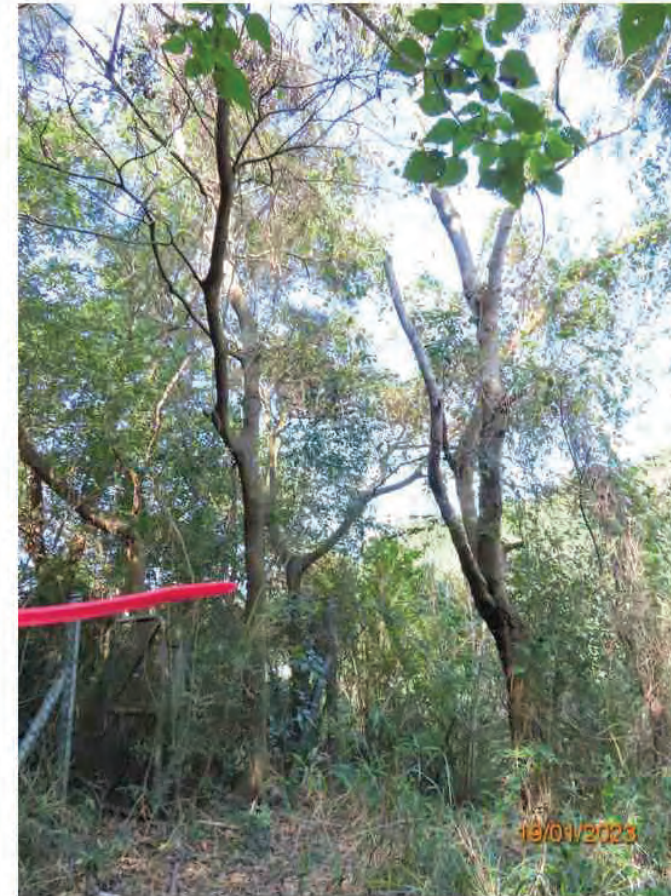
T3787-Root



T3787-Tag



T3788-Overview



T3789-Overview



T3789-Root



T3788-Root



T3788-Tag



T3789-Tag



T3790-Overview



T3790-Root



T3790-Tag



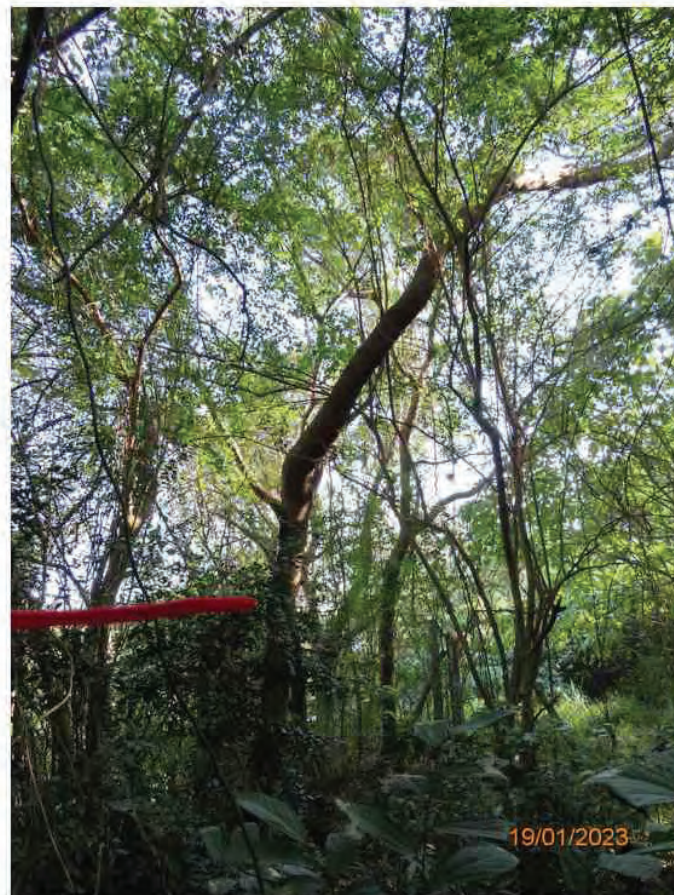
T3791-Root



T3791-Tag



T3791-Overview_Crown



T3791-Overview_Trunk



T3792-Overview



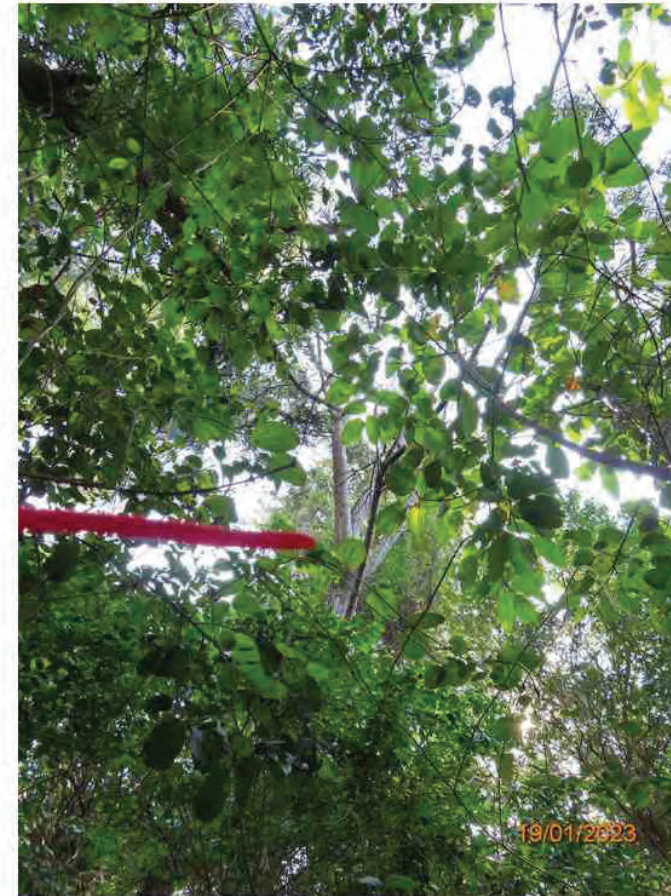
T3792-Root



T3792-Tag



T3793-Overview



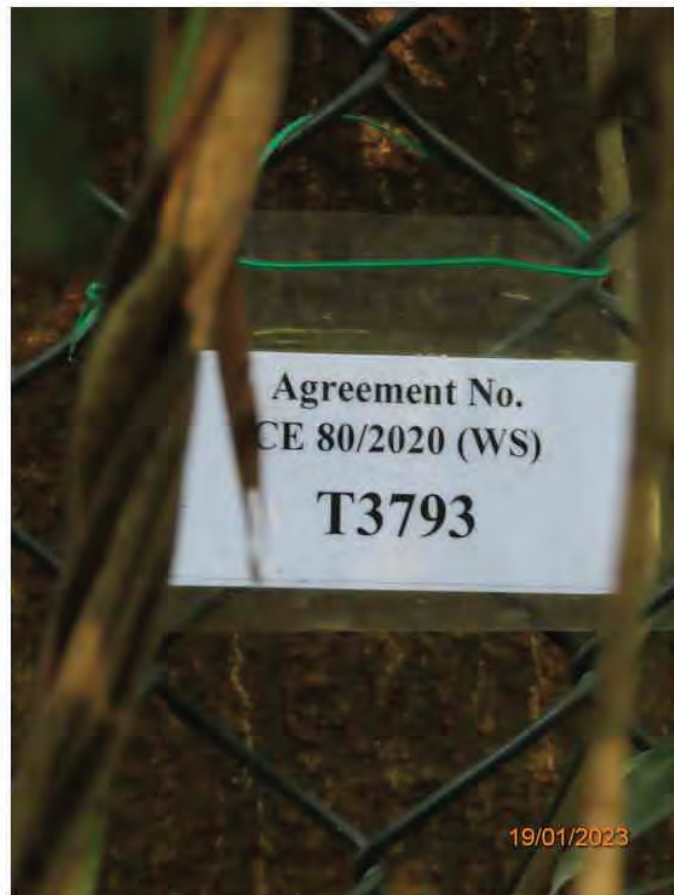
T3794-Overview_Crown



T3794-Overview_Trunk



T3793-Root



T3793-Tag



T3794-Root



T3794-Tag



T3795-Overview



T3795-Root



T3796-Root



T3796-Tag



T3795-Tag



T3796-Overview



T3797-Overview



T3797-Root



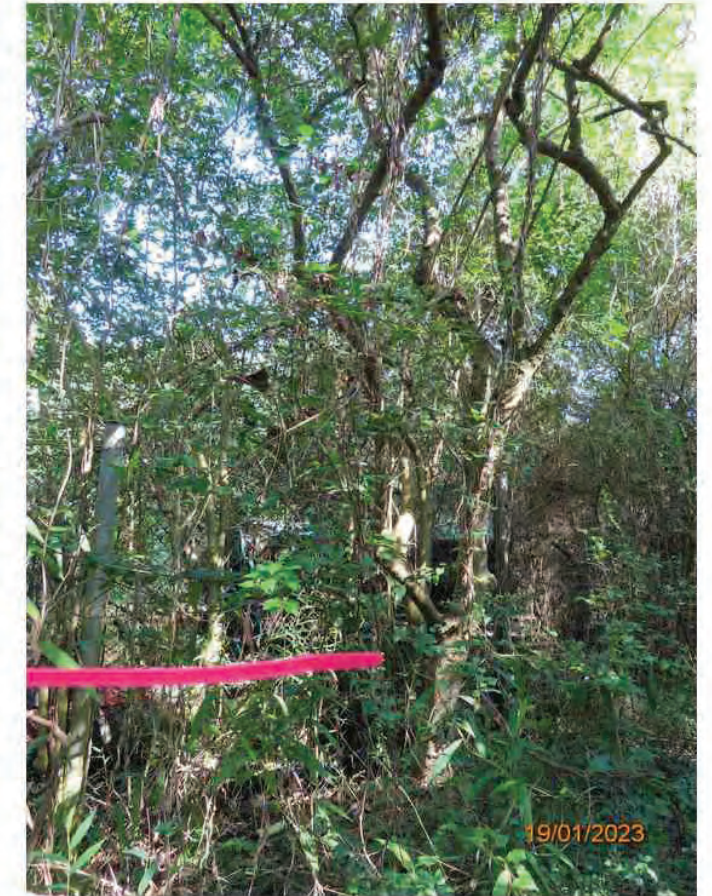
T3797-Tag



T3798-Overview



T3799-Overview_Crown



T3799-Overview_Trunk



T3798-Root



T3798-Tag



T3799-Root



T3799-Tag



T3800-Overview



T3800-Root



T3801-Root



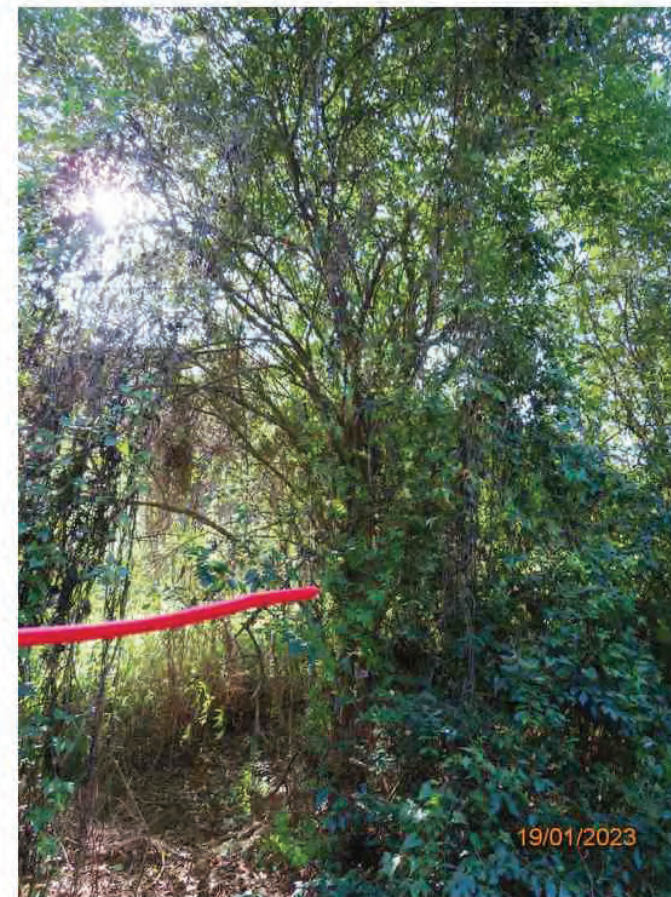
T3801-Tag



T3800-Tag



T3801-Overview



T3802-Overview



T3802-Root



T3802-Tag



T3803-Included bark



T3803-Root



T3803-Tag



T3803-Overview_Crown



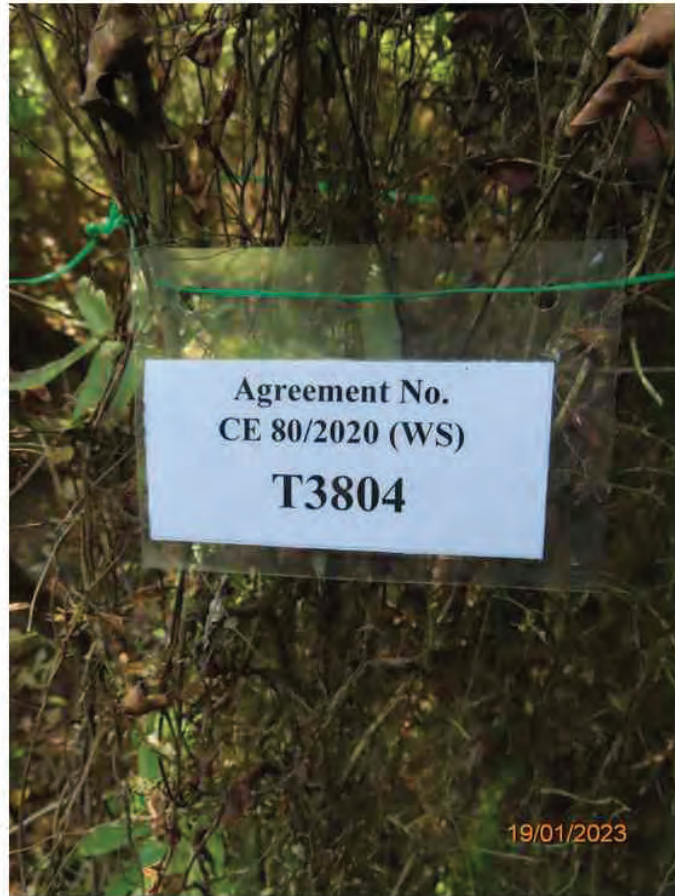
T3803-Overview_Trunk



T3804-Overview



T3804-Root



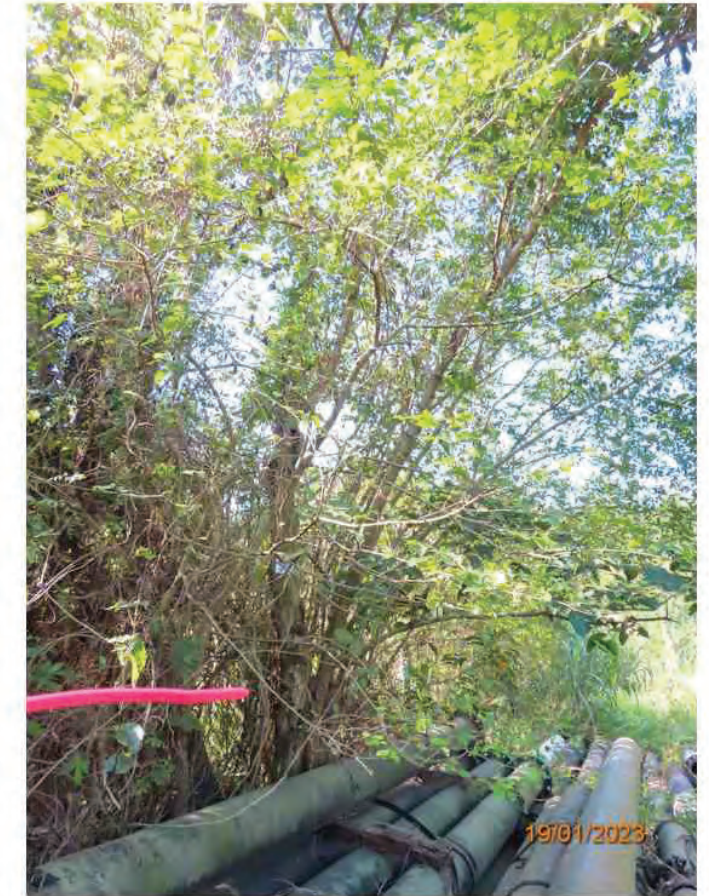
T3804-Tag



T3805-Overview_Crown



T3805-Tag



T3806-Overview



T3805-Overview_Trunk



T3805-Root



T3806-Root



T3806-Tag



T3807-Overview



T3807-Root



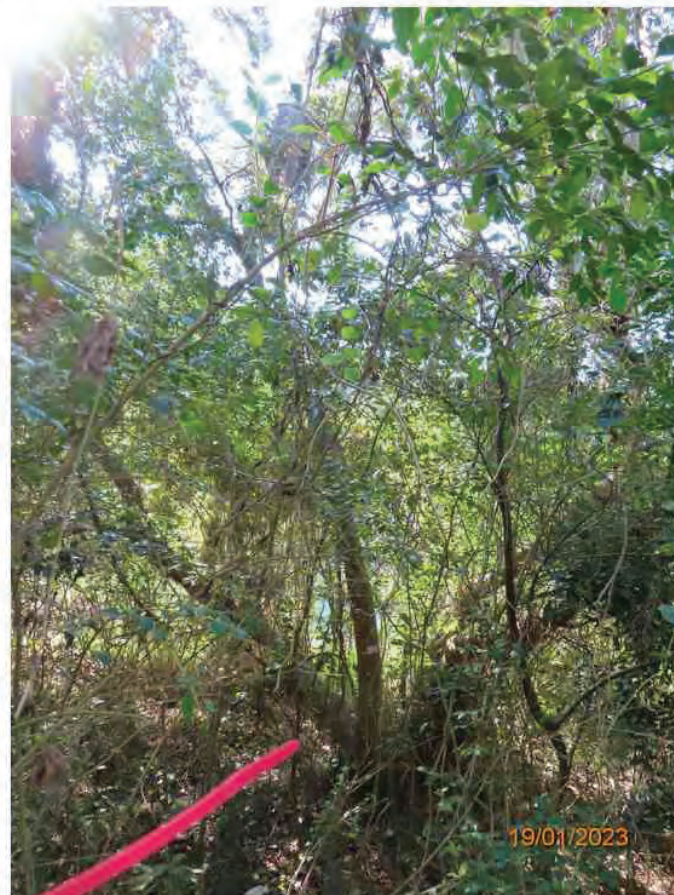
T3808-Root



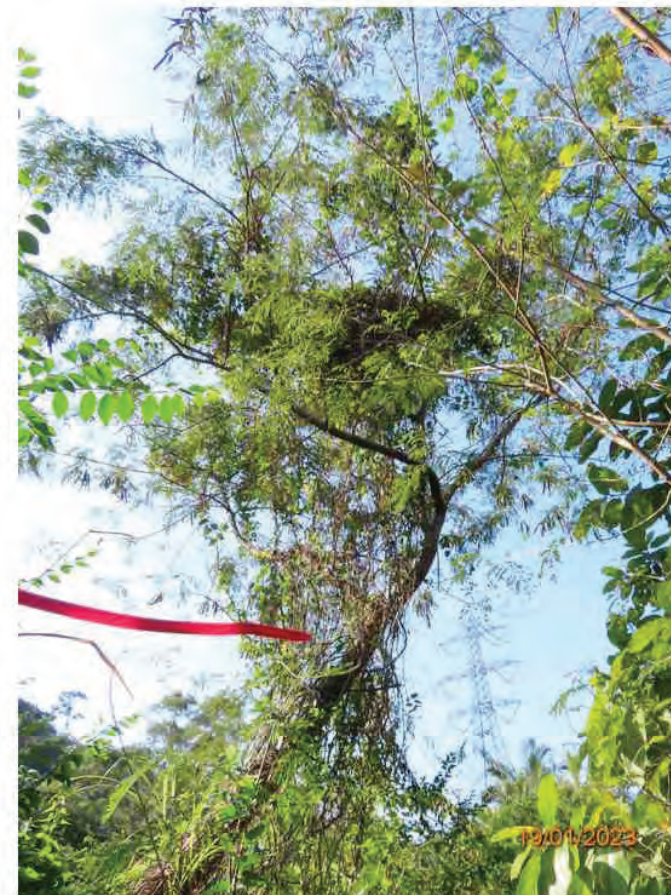
T3808-Tag



T3807-Tag



T3808-Overview



T3809-Overview_Crown



T3809-Overview_Trunk



T3809-Root



T3809-Tag



T3810-Tag



T3811-Overview



T3810-Overview



T3810-Root



T3811-Root



T3812-Overview



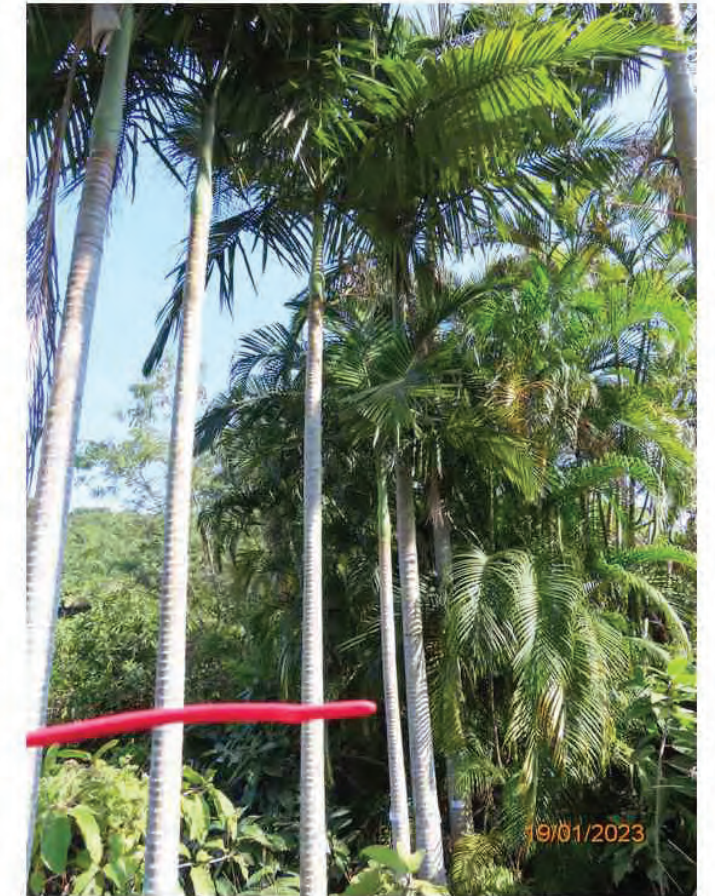
T3812-Root



T3812-Tag



T3813-Tag



T3814-Overview



T3813-Overview



T3813-Root



T3814-Root



T3814-Tag



T3815-Overview



T3815-Root



T3816-Root



T3816-Tag



T3815-Tag



T3816-Overview



T3817-Overview



T3817-Root



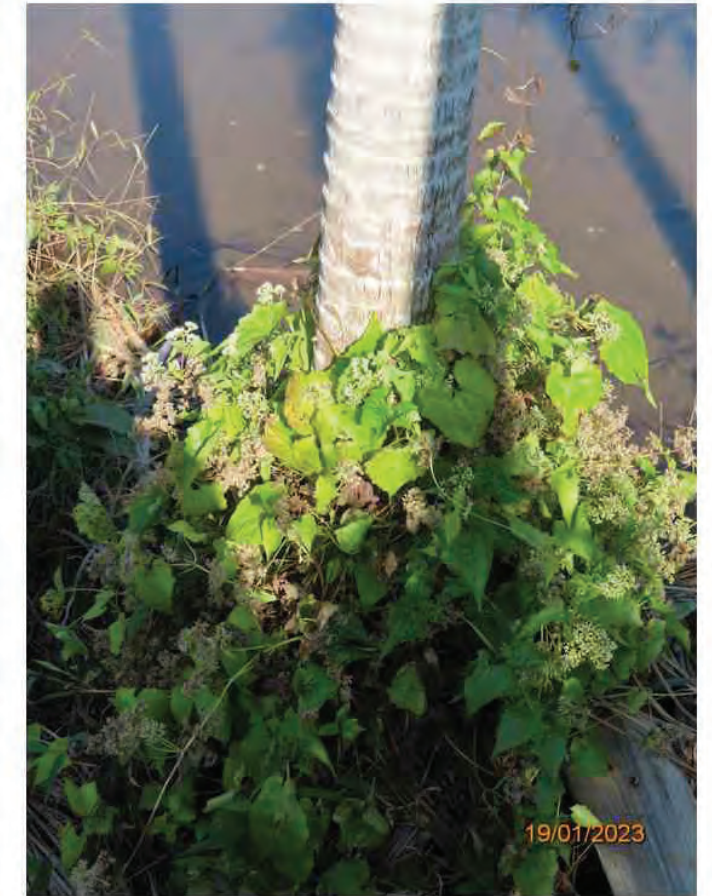
T3817-Tag



T3818-Overview



T3819-Overview



T3819-Root



T3818-Root



T3818-Tag



T3819-Tag



T3820-Overview



T3820-Root



T3820-Tag



T3821-Tag



T3822-Overview



T3821-Overview



T3821-Root



T3822-Root



T3822-Tag



T3823-Overview



T3823-Root



T3824-Root



T3824-Tag



T3823-Tag



T3824-Overview



T3825-Overview



T3825-Root



T3825-Tag



T3826-Overview



T3827-Overview



T3827-Root



T3826-Root



T3826-Tag



T3827-Tag



T3828-Overview



T3828-Root



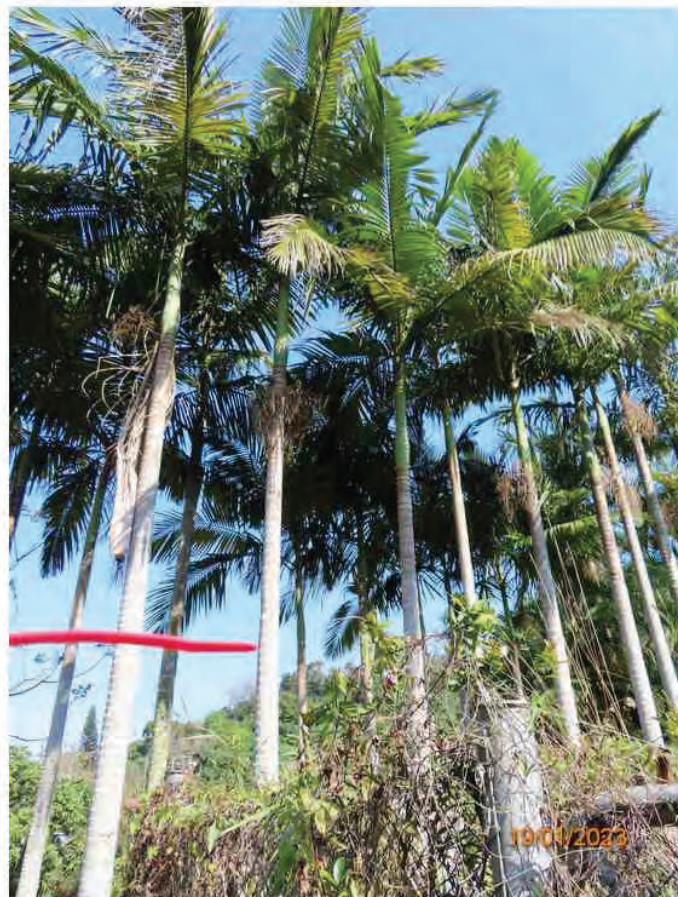
T3828-Tag



T3829-Tag



T3830-Overview



T3829-Overview



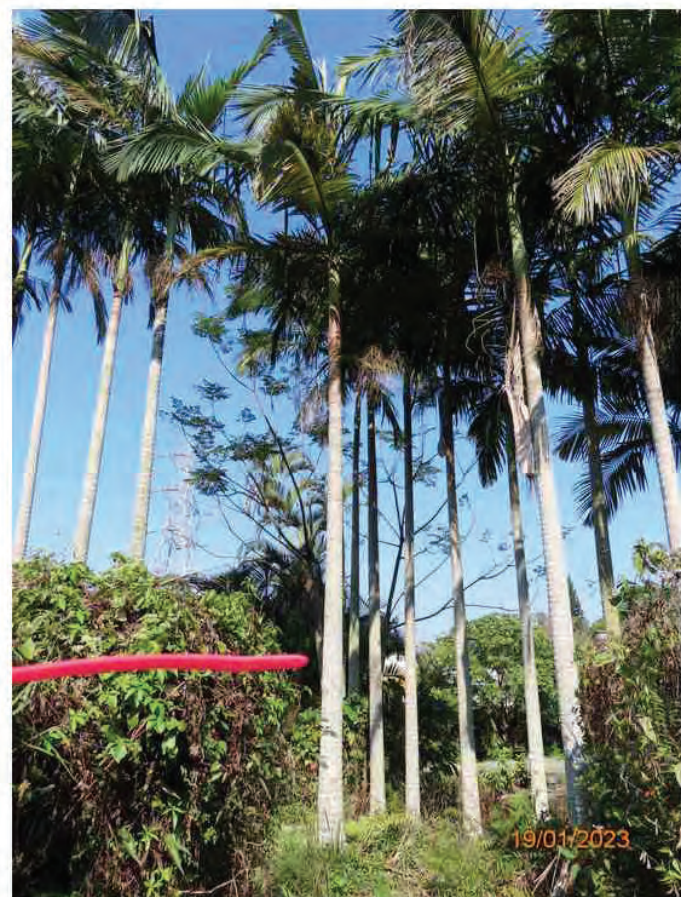
T3829-Root



T3830-Root



T3830-Tag



T3831-Overview



T3831-Root



T3832-Root



T3832-Tag



T3831-Tag



T3832-Overview



T3833-Overview



T3833-Root



T3833-Tag



T3834-Overview



T3835-Overview



T3835-Root



T3834-Root



T3834-Tag



T3835-Tag



T3836-Overview



T3836-Root



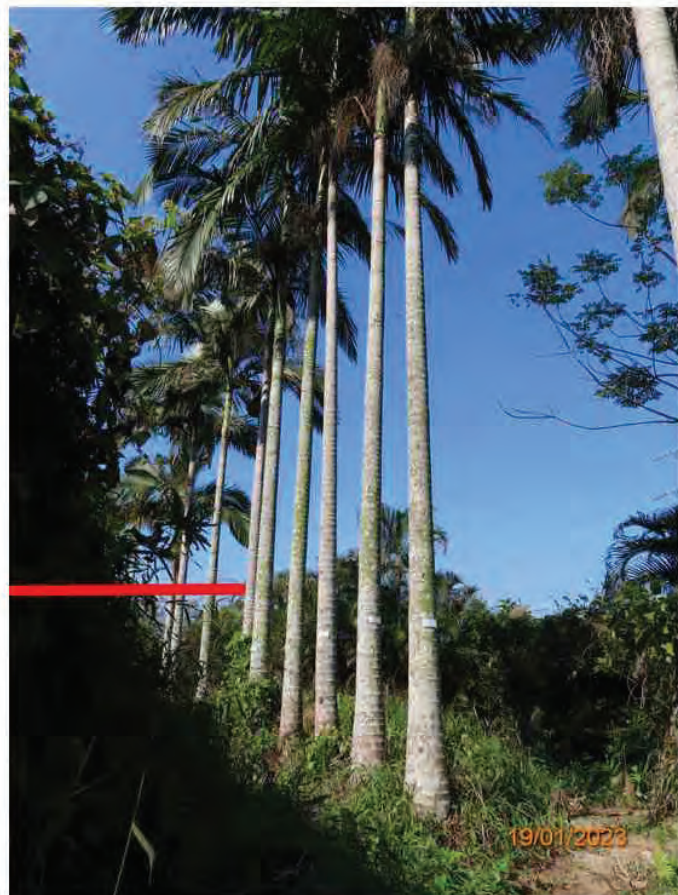
T3836-Tag



T3837-Tag



T3838-Overview_Crown



T3837-Overview



T3837-Root



T3838-Overview_Trunk



T3838-Root



T3838-Tag



T3839-Overview



T3840-Overview



T3840-Root



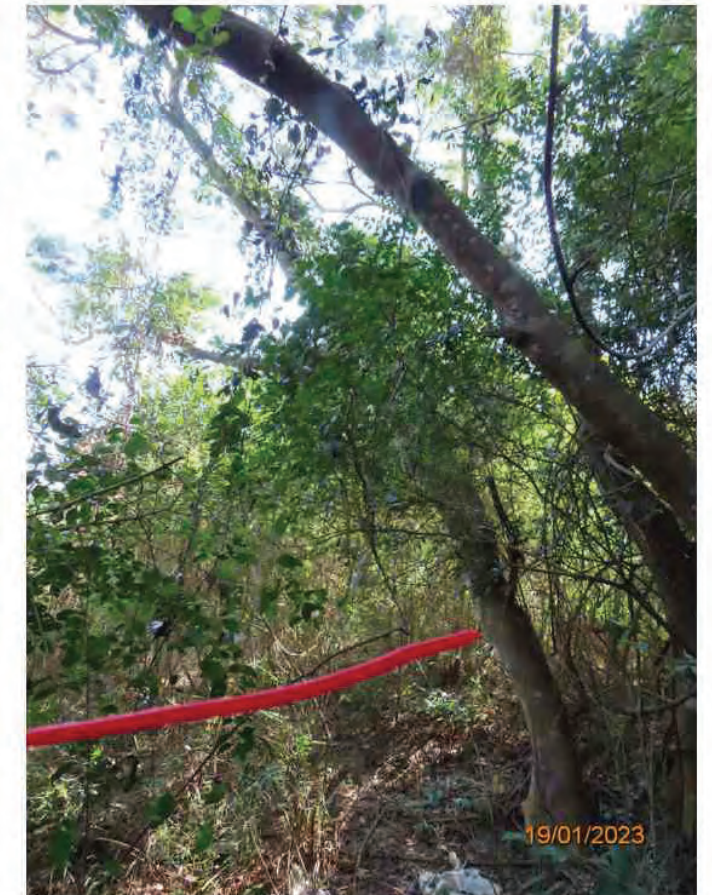
T3839-Root



T3839-Tag



T3840-Tag



T3841-Overview



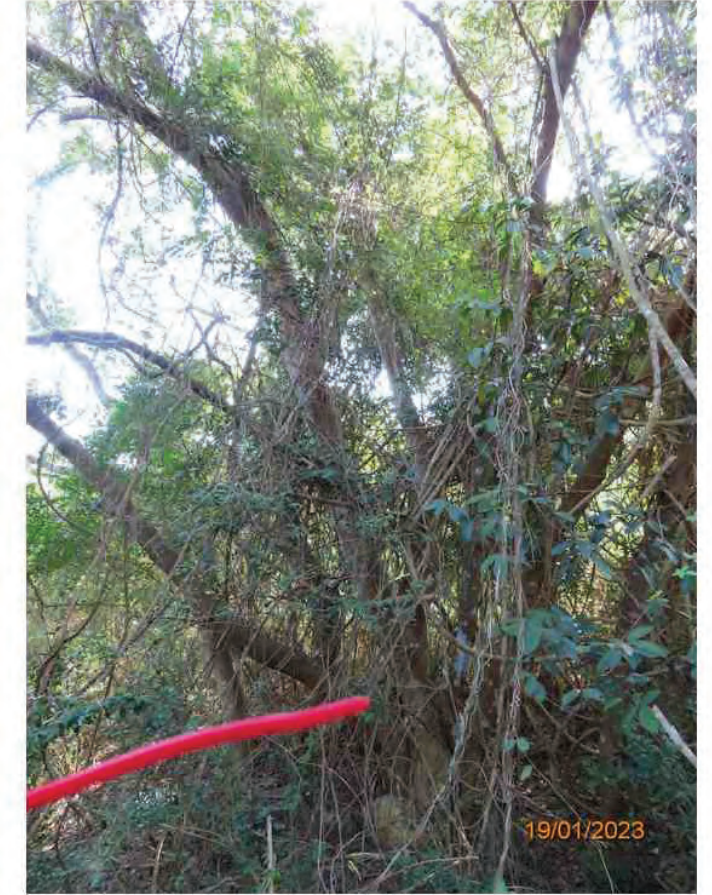
T3841-Root



T3841-Tag



T3842-Tag



T3843-Overview



T3842-Overview



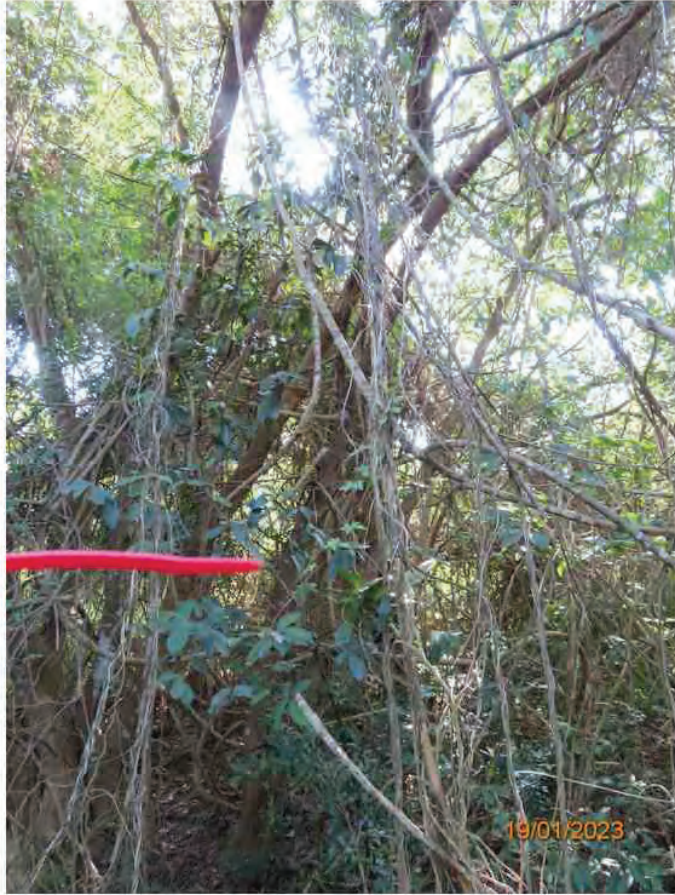
T3842-Root



T3843-Root



T3843-Tag



T3844-Overview



T3844-Root



T3845-Overview_Trunk



T3845-Root



T3844-Tag



T3845-Overview_Crown



T3845-Tag



T3846-Overview



T3846-Root



T3846-Tag



T3847-Tag



T3848-Overview



T3847-Overview



T3847-Root



T3848-Root



T3848-Tag



T3849-Overview_Crown



T3849-Overview_Trunk



T3850-Overview



T3850-Root



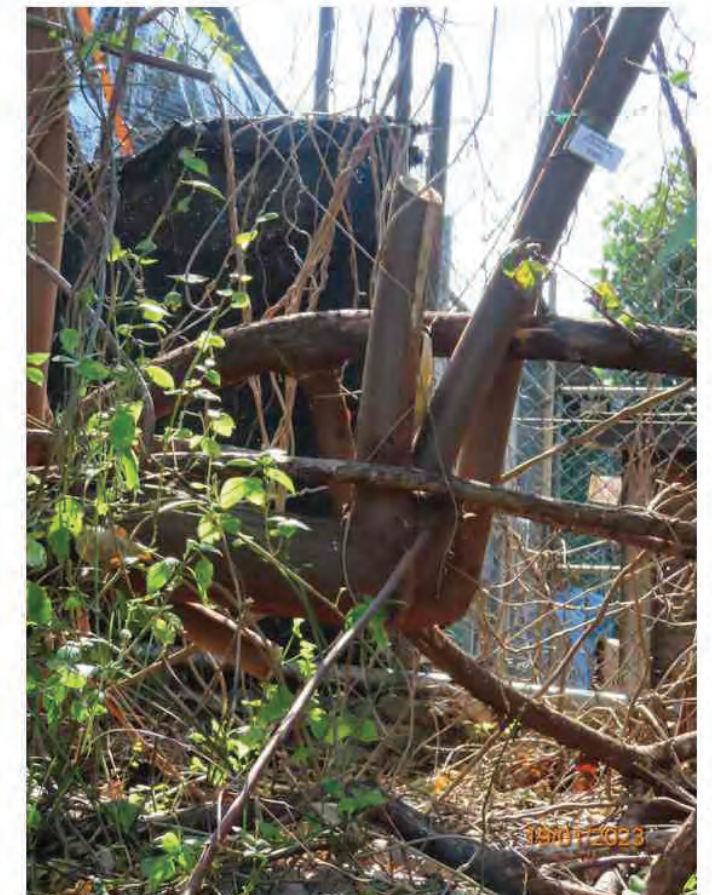
T3849-Root



T3849-Tag



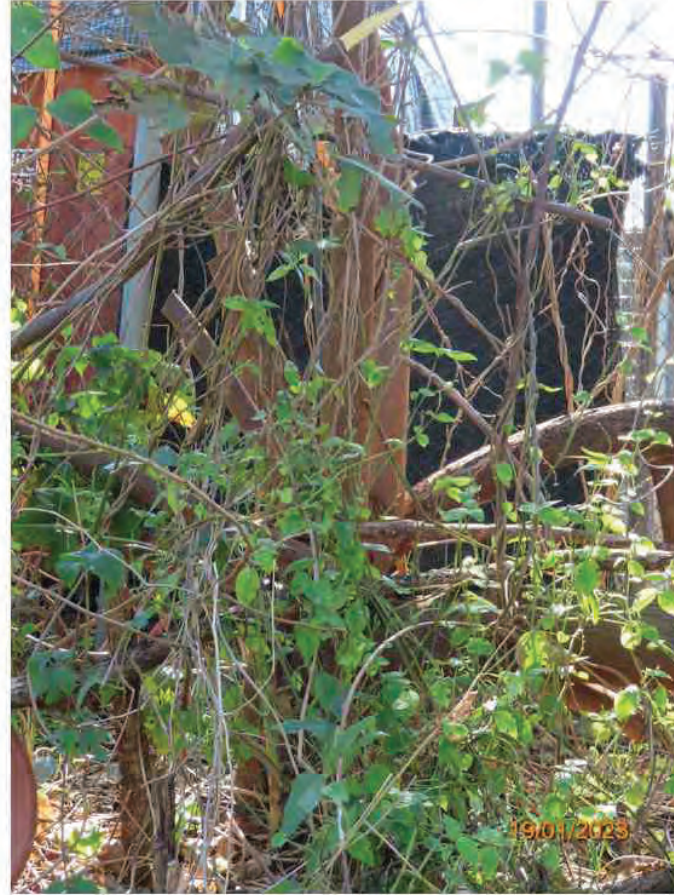
T3850-Tag



T3851-Epicormics



T3851-Overview



T3851-Root



T3852-Overview



T3852-Root



T3851-Stump



T3851-Tag



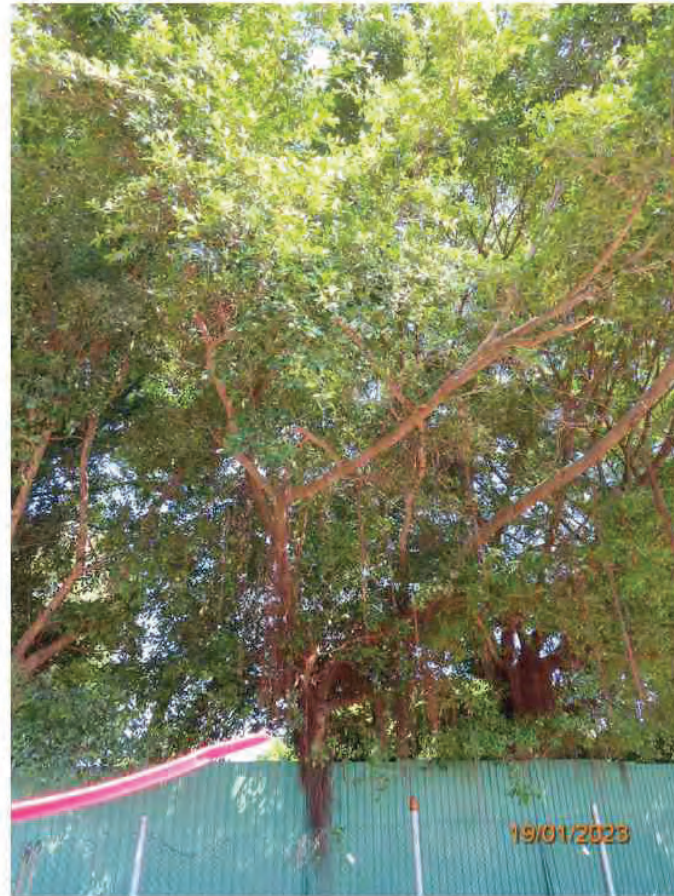
T3852-Tag



T3853-Overview



T3853-Tag



T3854-Overview



T3855-Tag



T3856-Overview



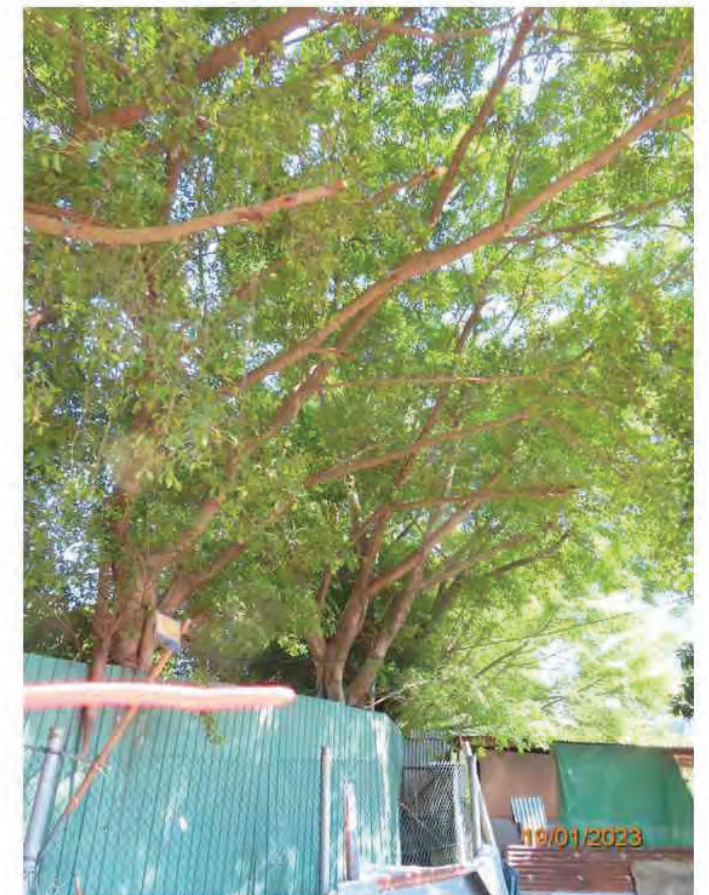
T3854-Tag



T3855-Overview



T3856-Tag



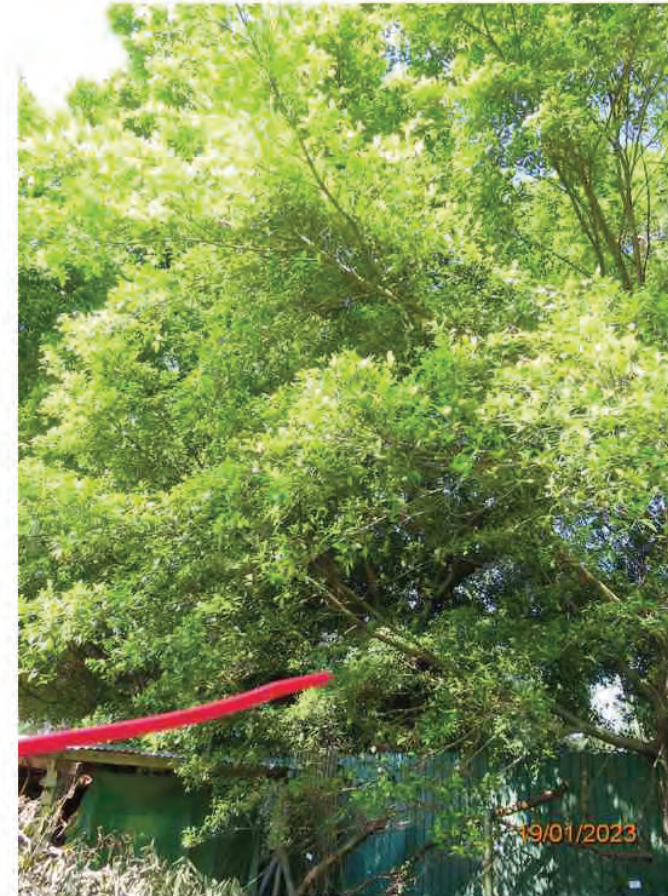
T3857-Overview



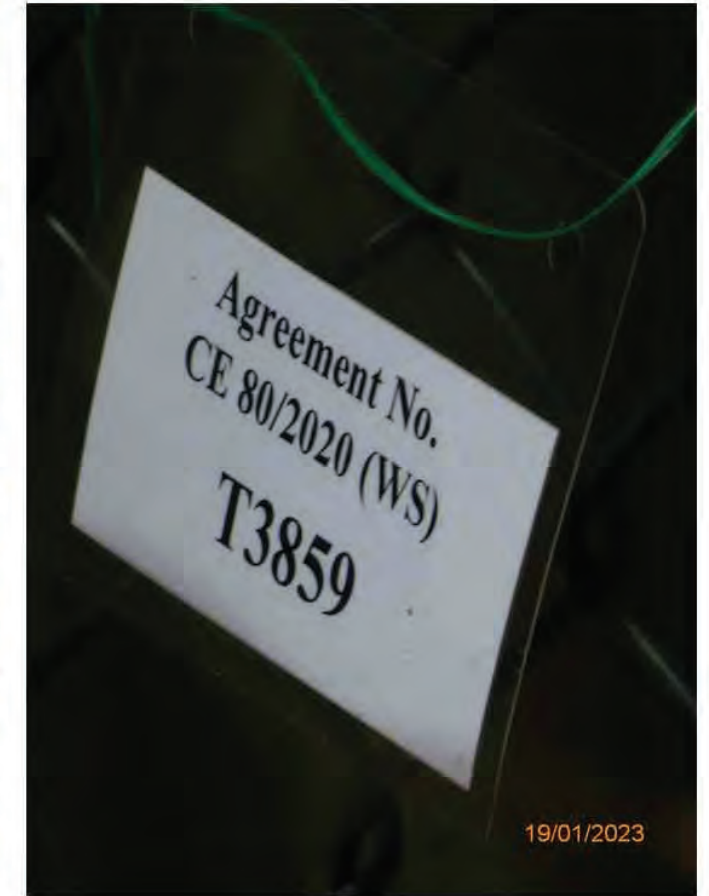
T3857-Tag



T3858-Overview



T3859-Overview



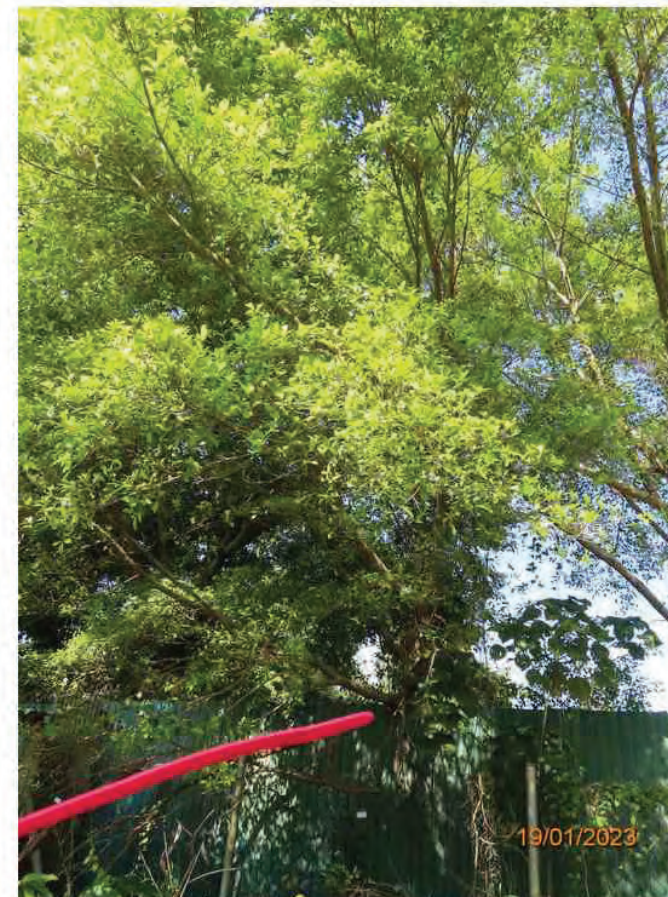
T3859-Tag



T3858-Root



T3858-Tag



T3860-Overview



T3860-Tag



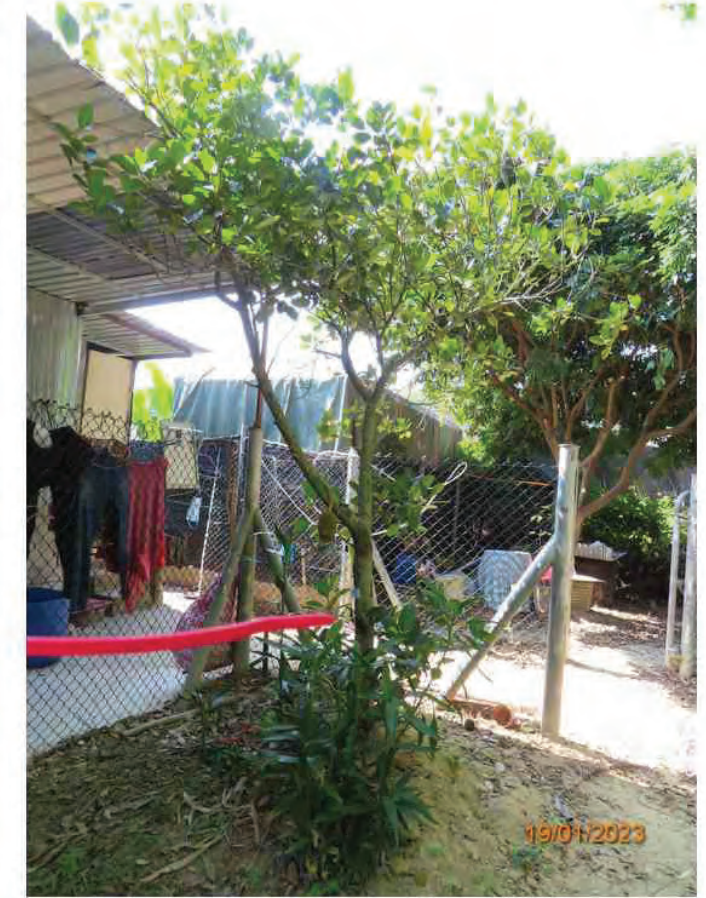
T3861-Overview



T3861-Tag



T3862-Tag



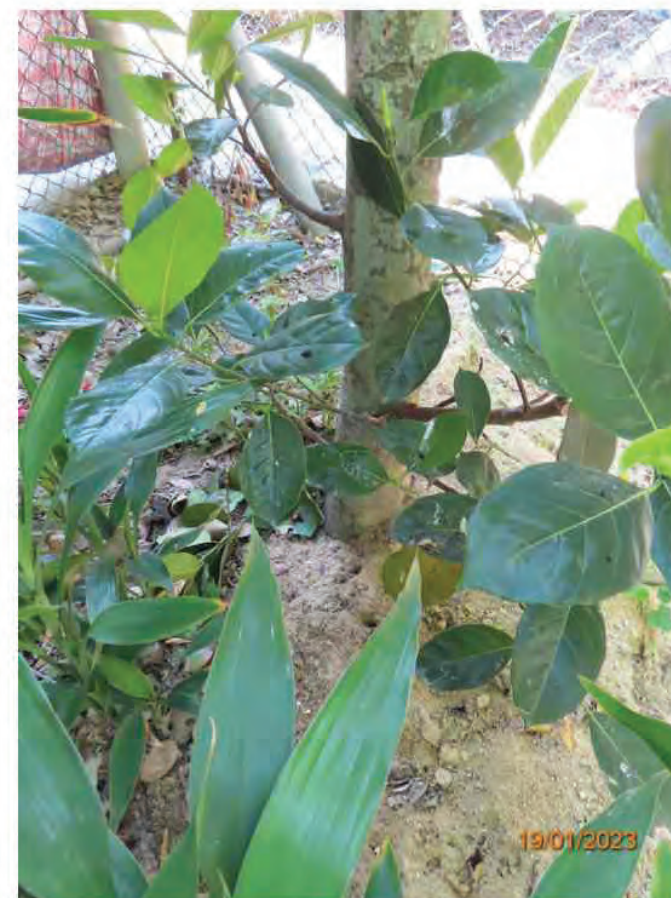
T3863-Overview



T3862-Overview



T3862-Root



T3863-Root



T3863-Tag



T3864-Overview



T3864-Root



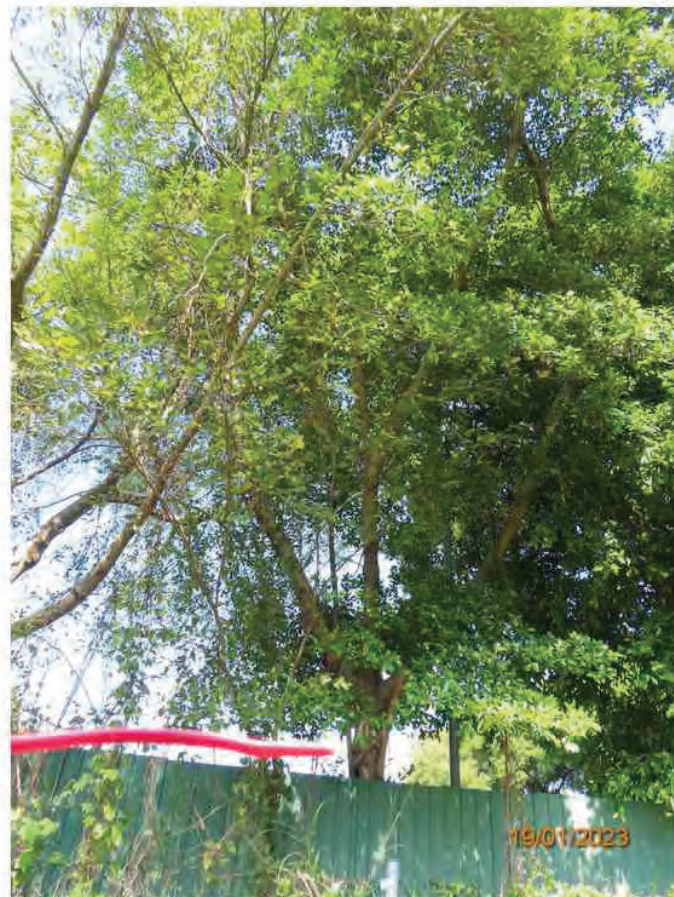
T3865-Tag



T3866-Overview



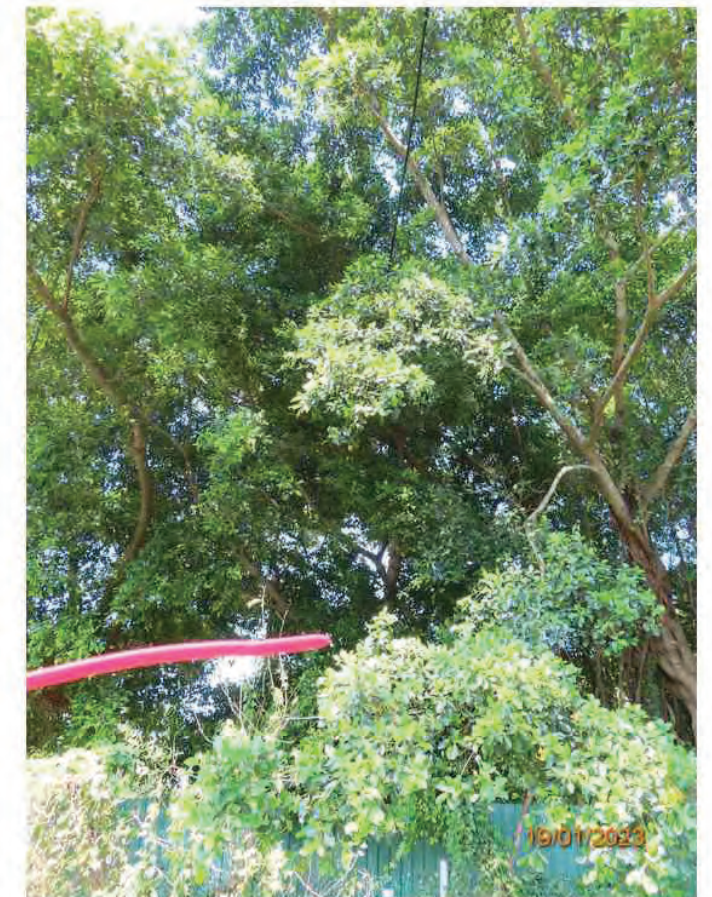
T3864-Tag



T3865-Overview



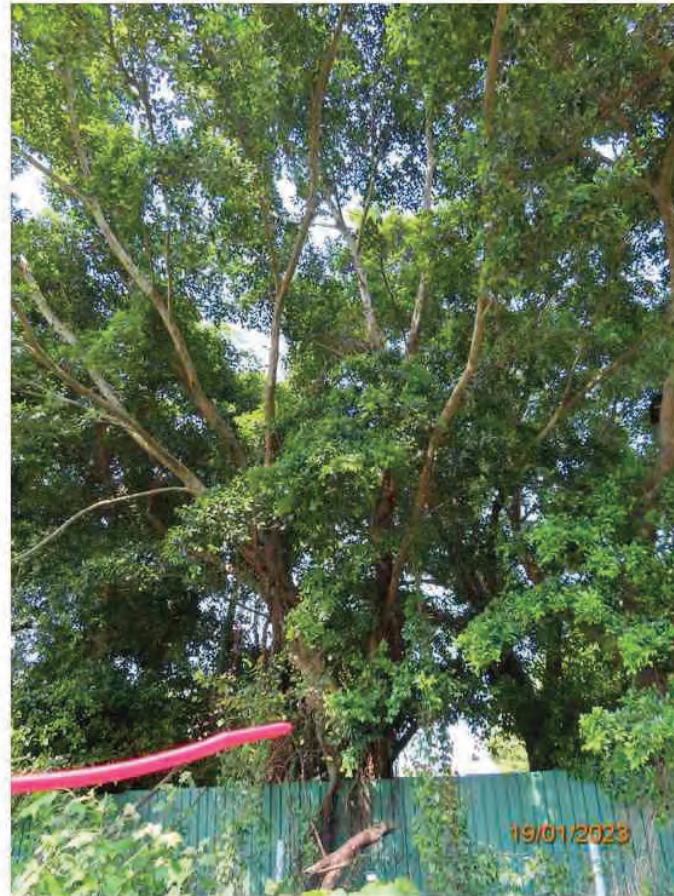
T3866-Tag



T3867-Overview



T3867-Tag



T3868-Overview



T3869-Tag



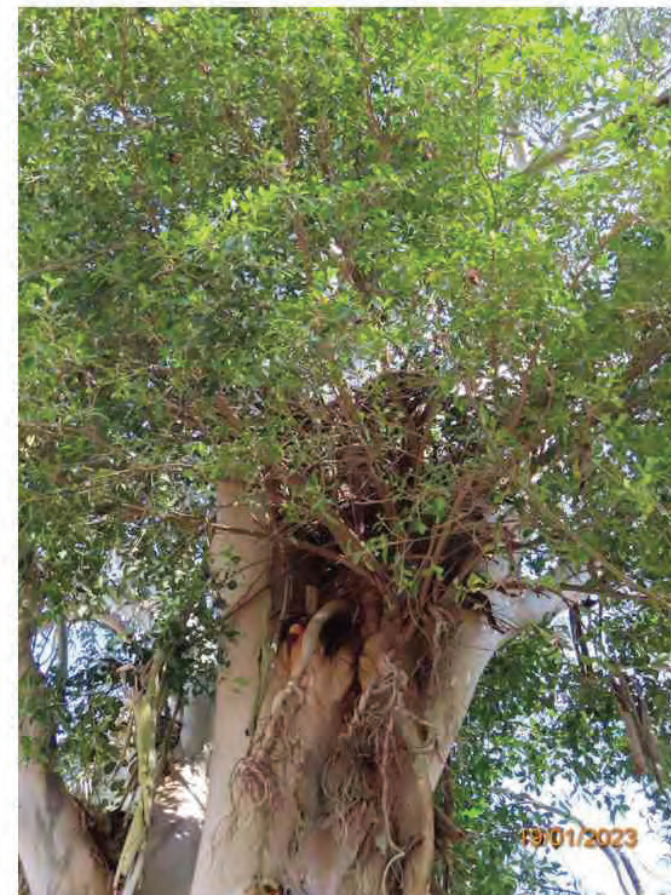
T3870-Epiphytic plant (1)



T3868-Tag



T3869-Overview



T3870-Epiphytic plant (2)



T3870-Overview



T3870-Root



T3870-Tag



T3871-Tag



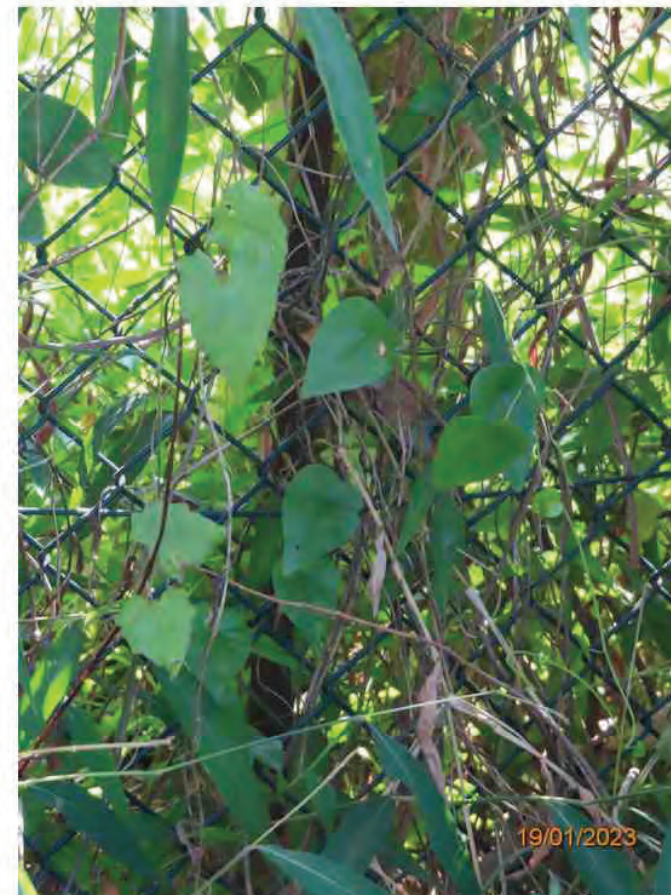
T3872-Overview



T3871-Overview



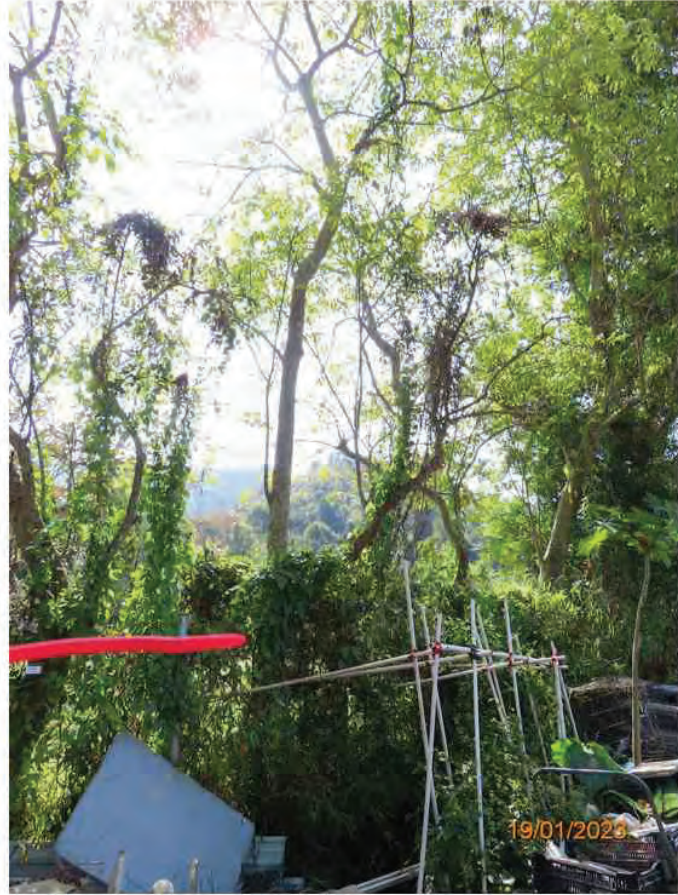
T3871-Root



T3872-Root



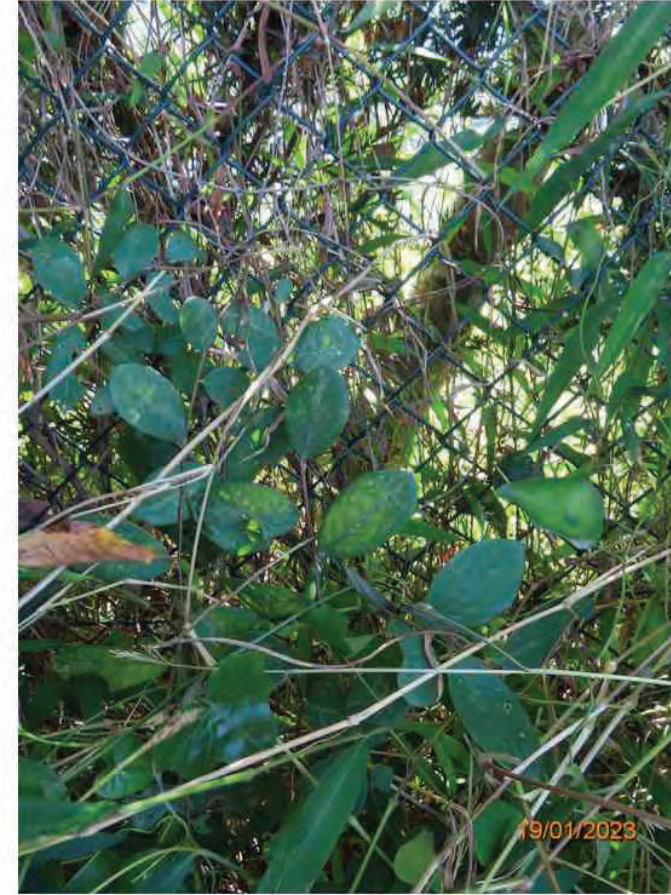
T3872-Tag



T3873-Overview



T3873-Root



T3874-Root



T3874-Tag



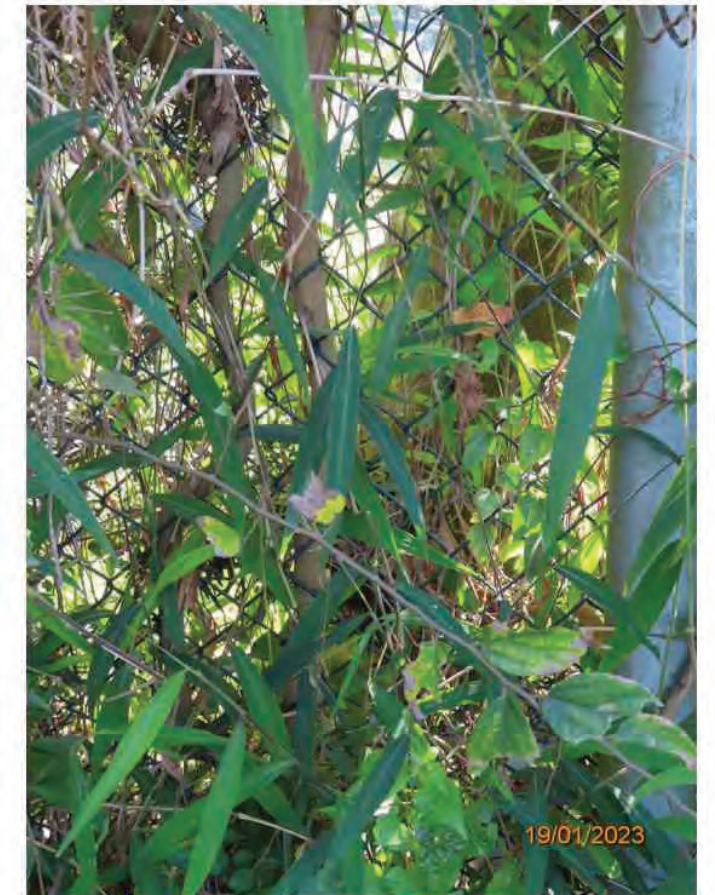
T3873-Tag



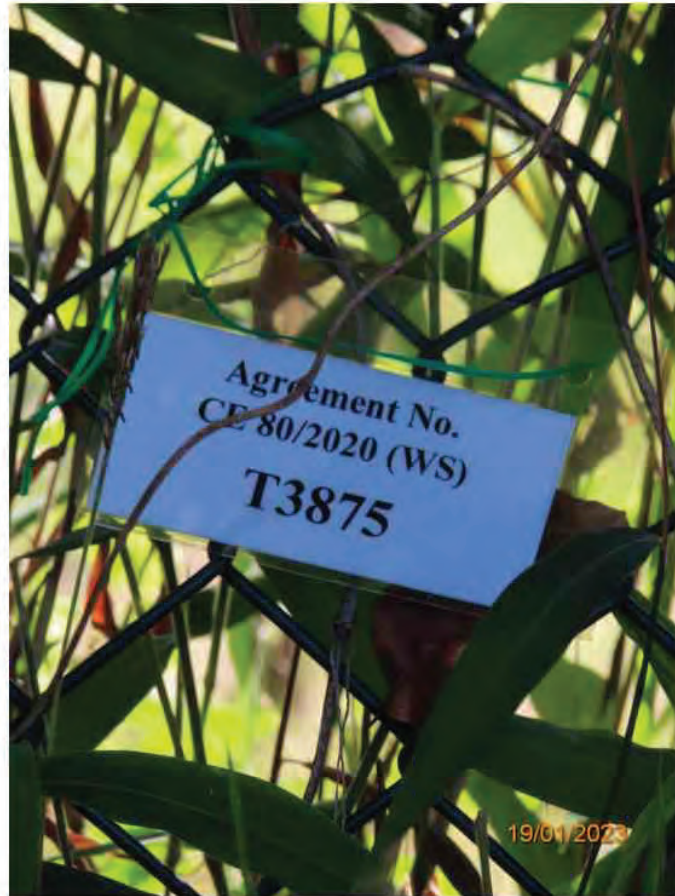
T3874-Overview



T3875-Overview



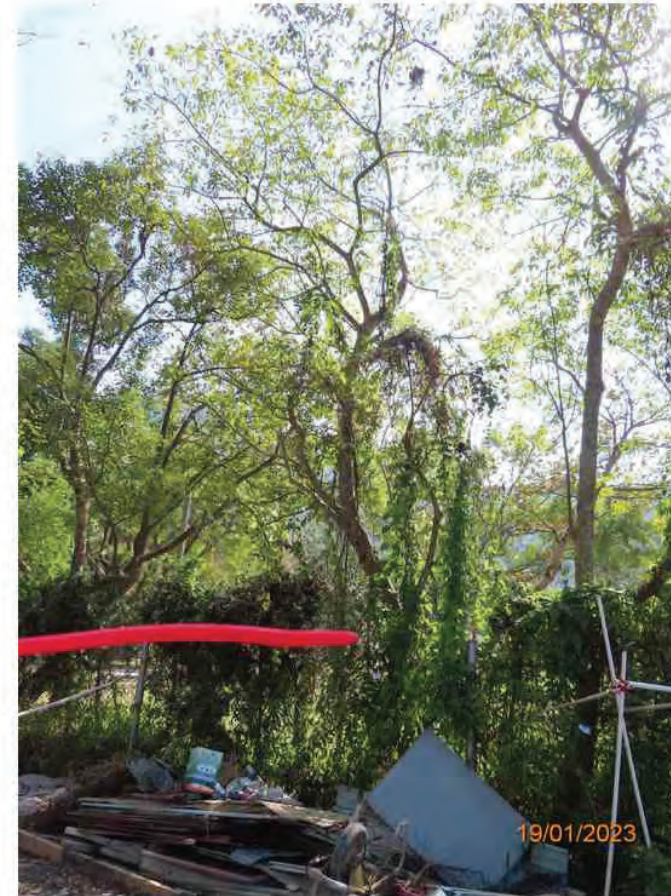
T3875-Root



T3875-Tag



T3876-Overview



T3877-Overview



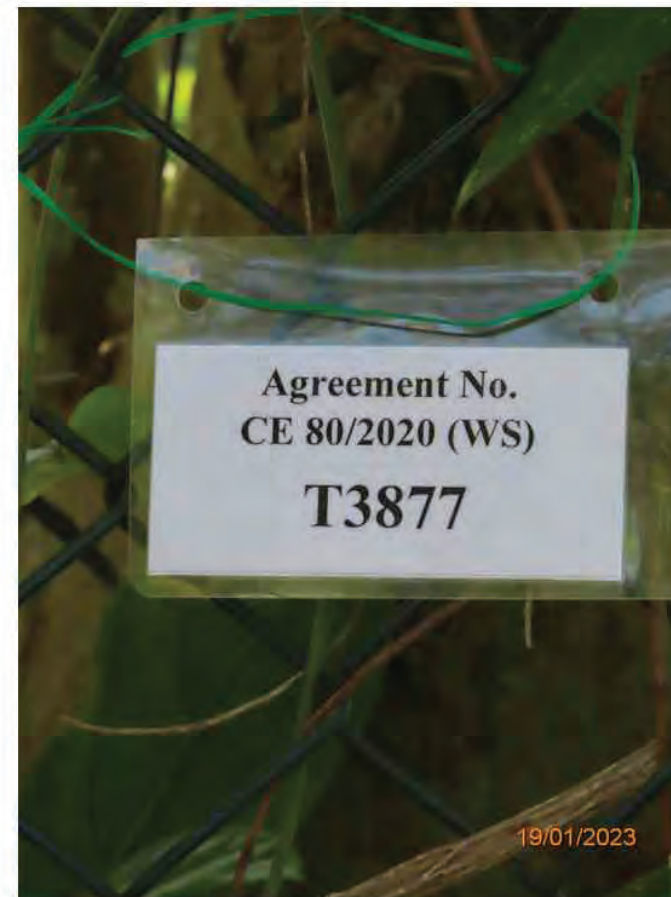
T3877-Root



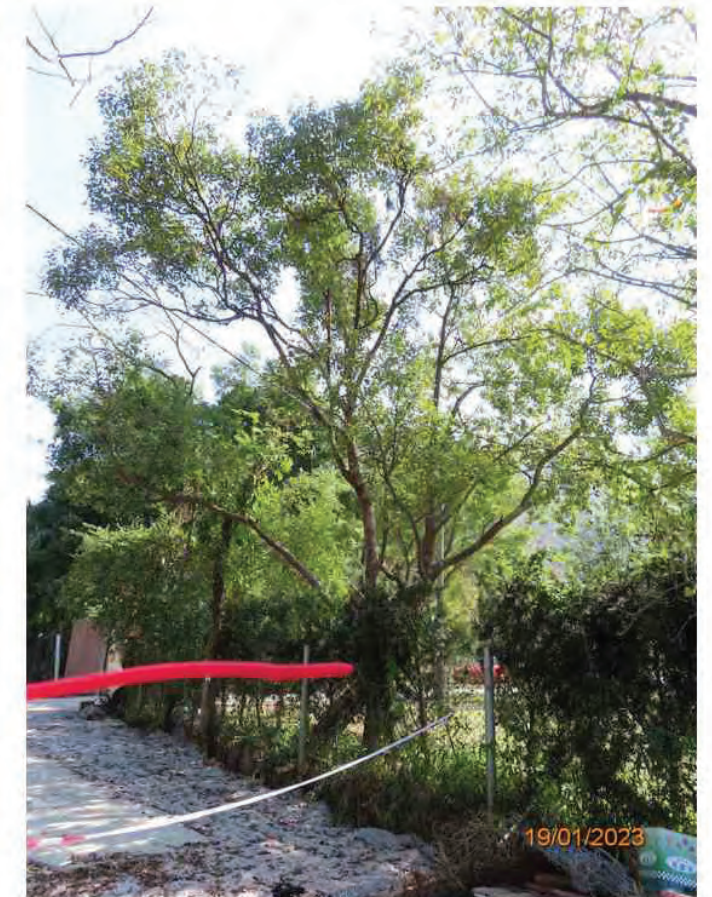
T3876-Root



T3876-Tag



T3877-Tag



T3878-Overview



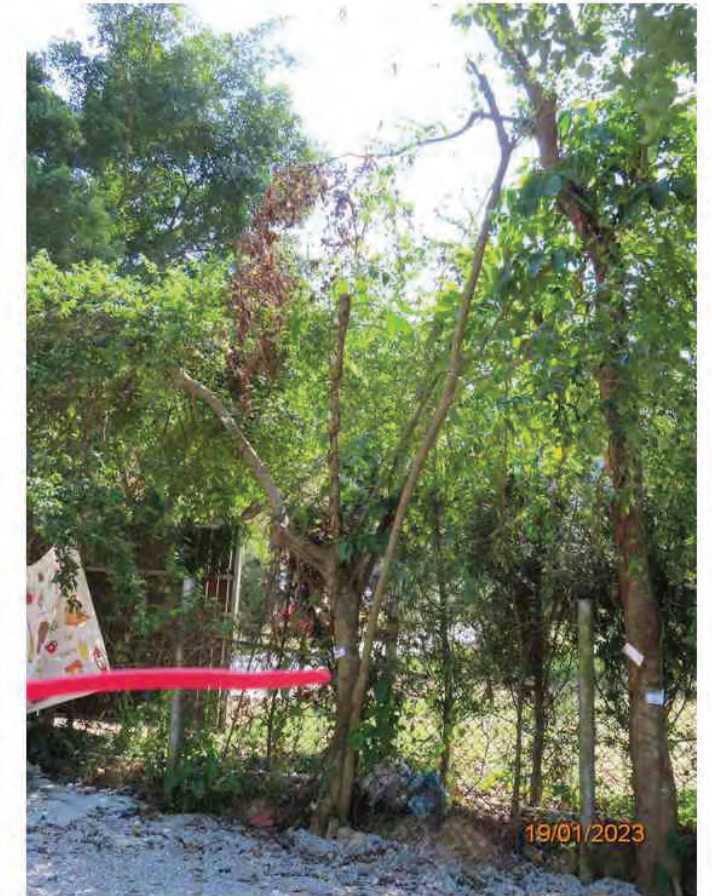
T3878-Root



T3878-Tag



T3879-Tag



T3880-Overview



T3879-Overview



T3879-Root



T3880-Root



T3880-Tag



T3881-Overview



T3881-Root



T3882-Root



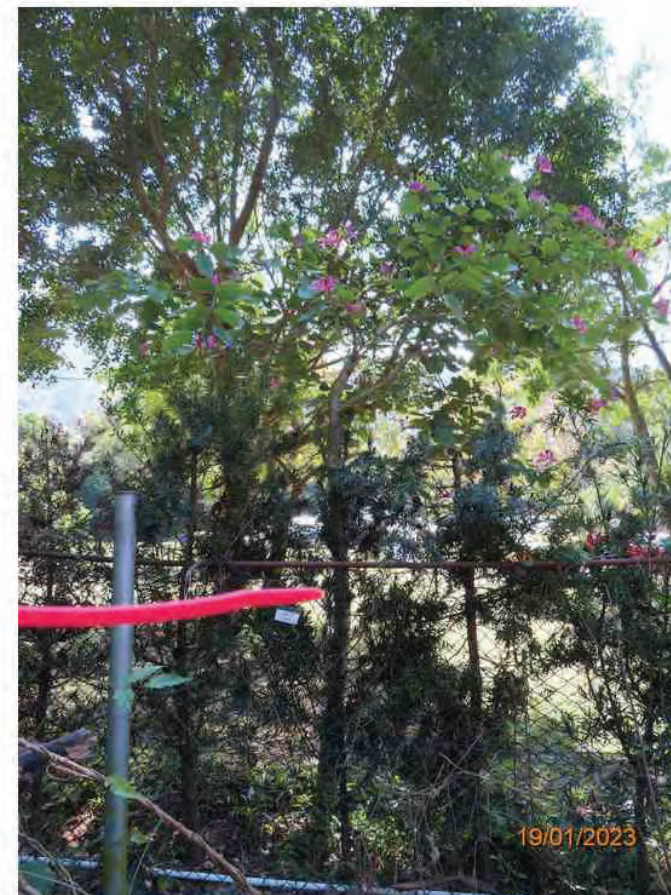
T3882-Tag



T3881-Tag



T3882-Overview



T3883-Overview



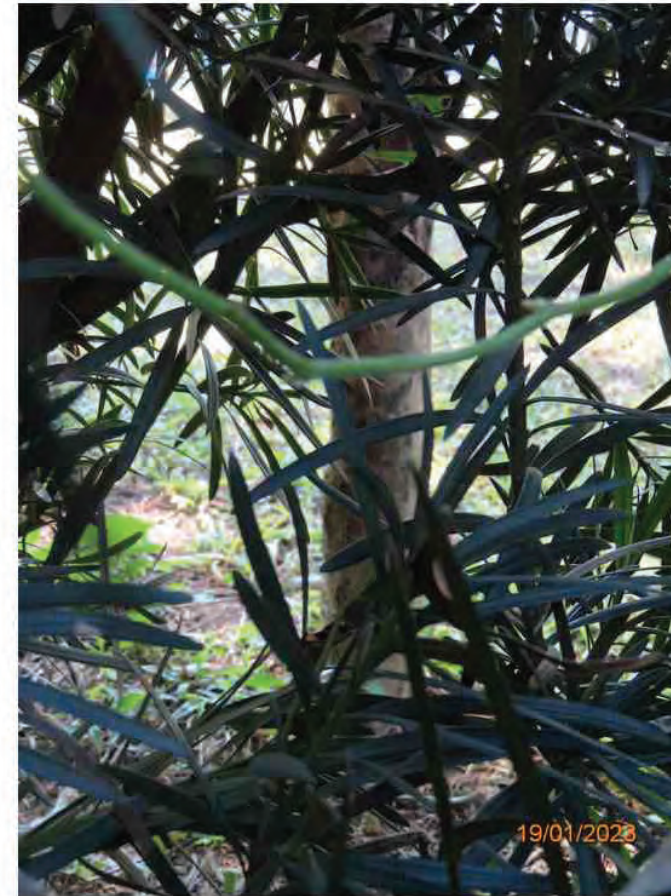
T3883-Root



T3883-Tag



T3884-Broken top



T3884-Root



T3884-Tag



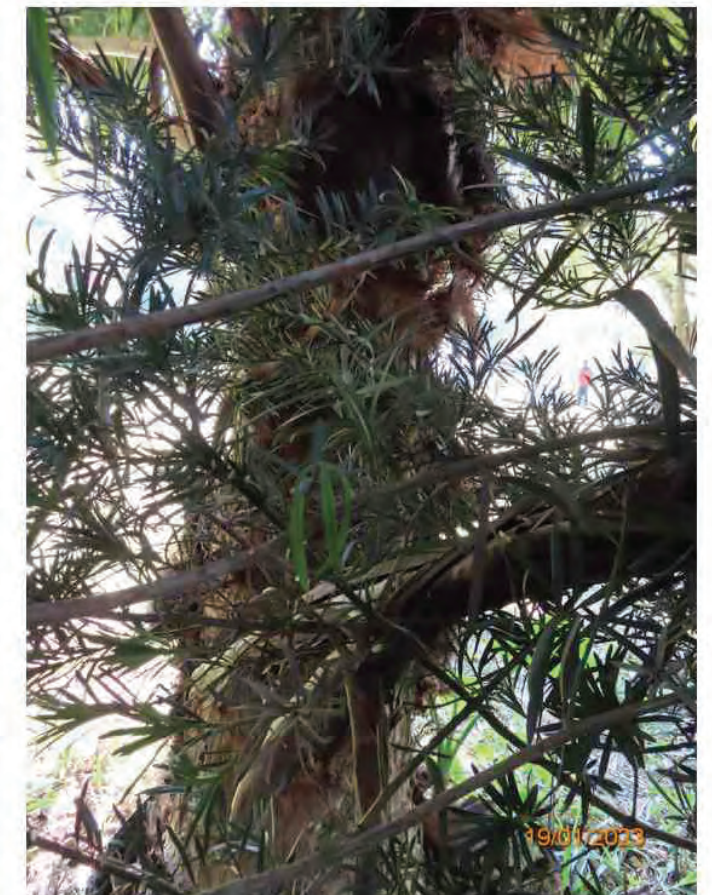
T3884-Cavity



T3884-Overview



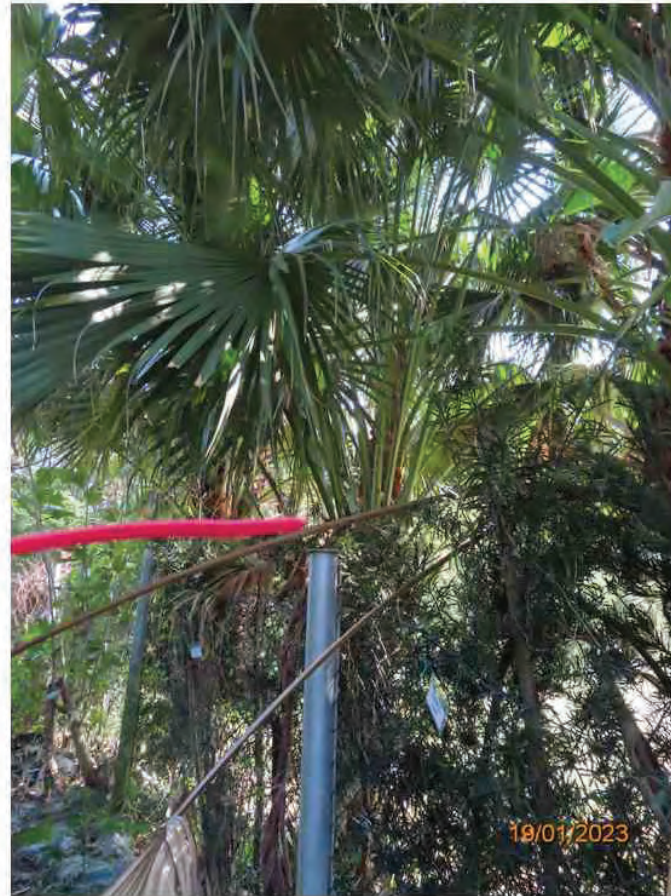
T3885-Overview



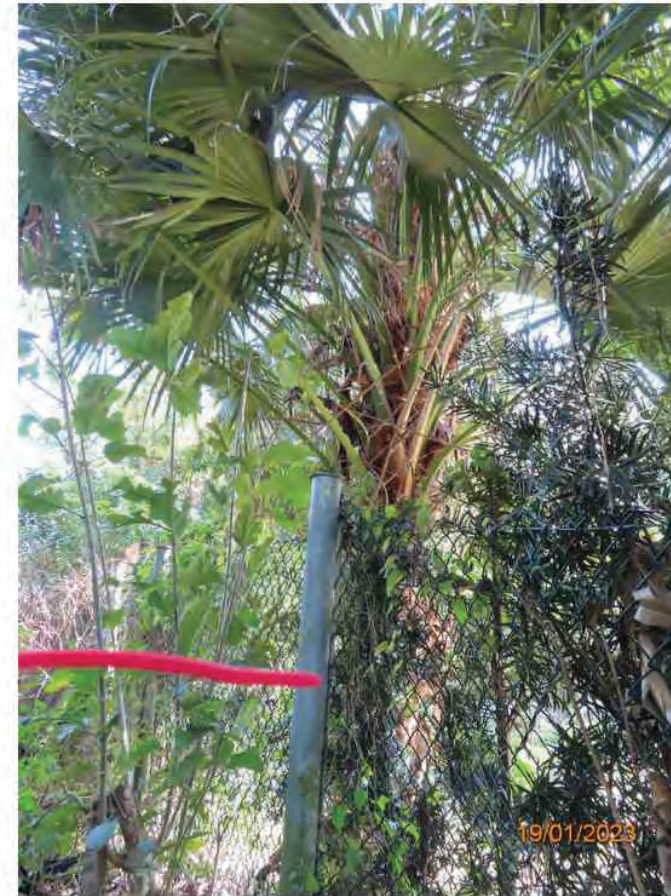
T3885-Root



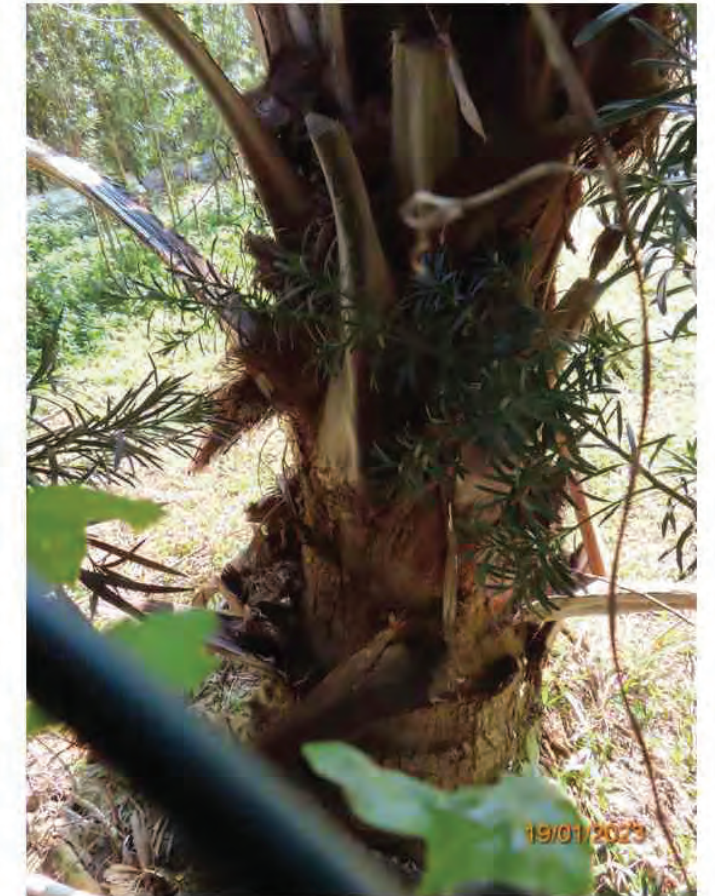
T3885-Tag



T3886-Overview



T3887-Overview



T3887-Root



T3886-Root



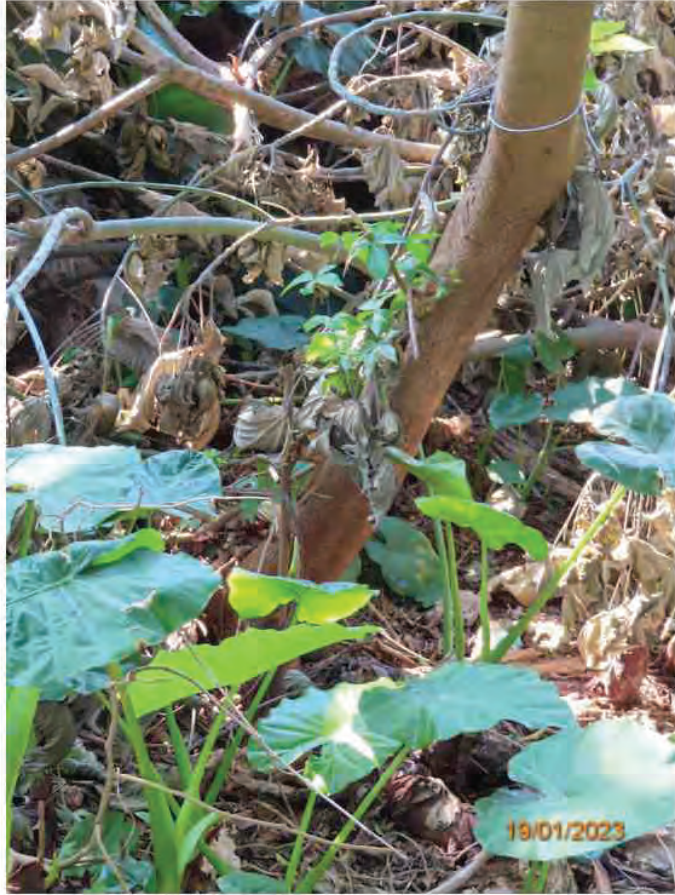
T3886-Tag



T3887-Tag



T3888-Overview



T3888-Root



T3888-Tag



T3889-Tag



T3890-Overview



T3889-Overview



T3889-Root



T3890-Root



T3890-Tag



T3891-Overview



T3891-Root



T3892-Root



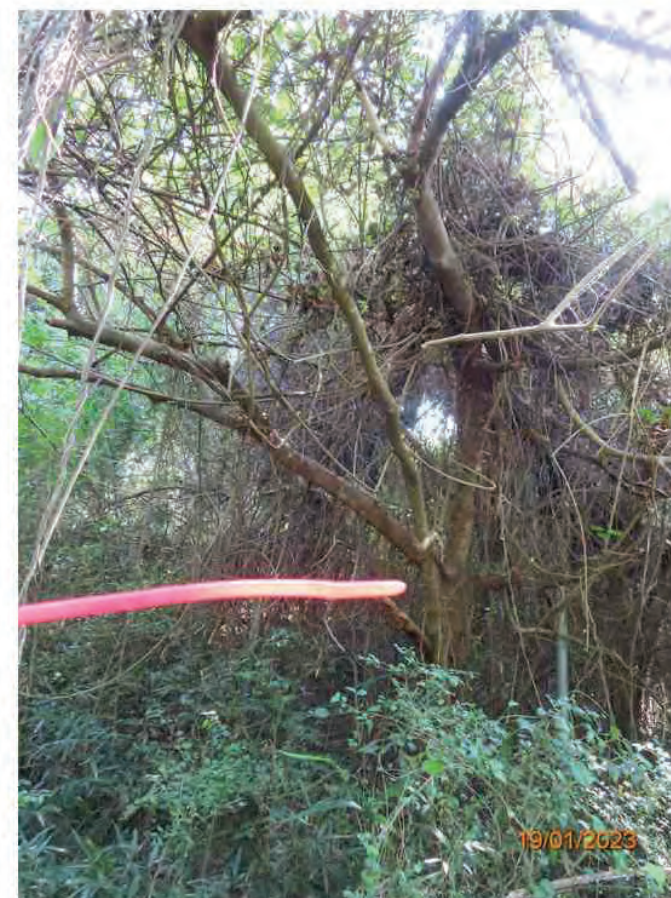
T3892-Tag



T3891-Tag



T3892-Overview



T3893-Overview



T3893-Root



T3893-Tag



T3894-Overview



T3895-Overview



T3895-Root



T3894-Root



T3894-Tag



T3895-Tag



T3896-Overview



T3896-Root



T3896-Tag



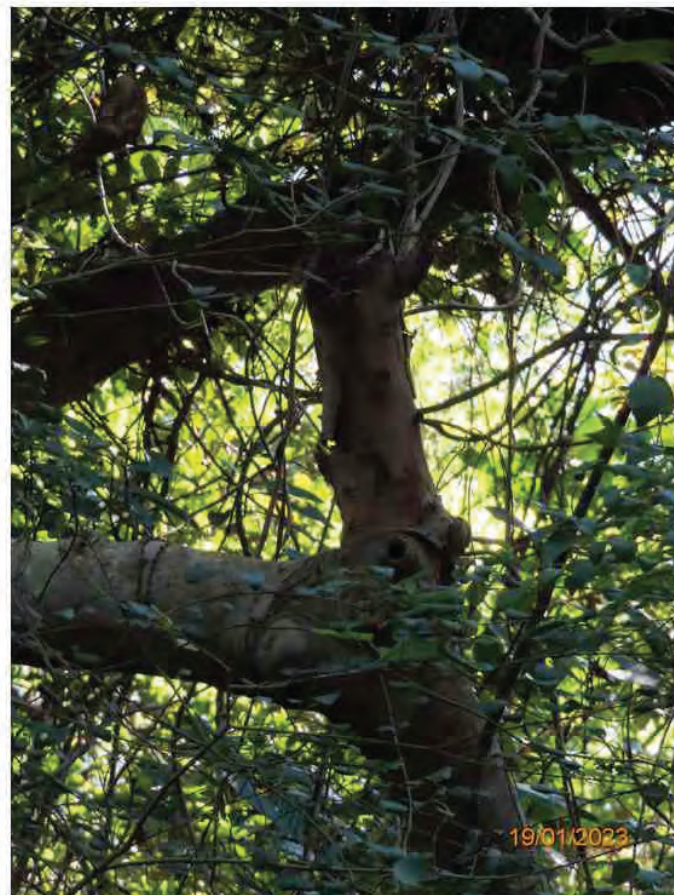
T3897-Overview



T3897-Root



T3897-Broken top (1)



T3897-Broken top (2)



T3897-Tag



T3898-Overview



T3898-Root



T3898-Tag



T3899-Tag



T3900-Overview



T3899-Overview



T3899-Root



T3900-Root



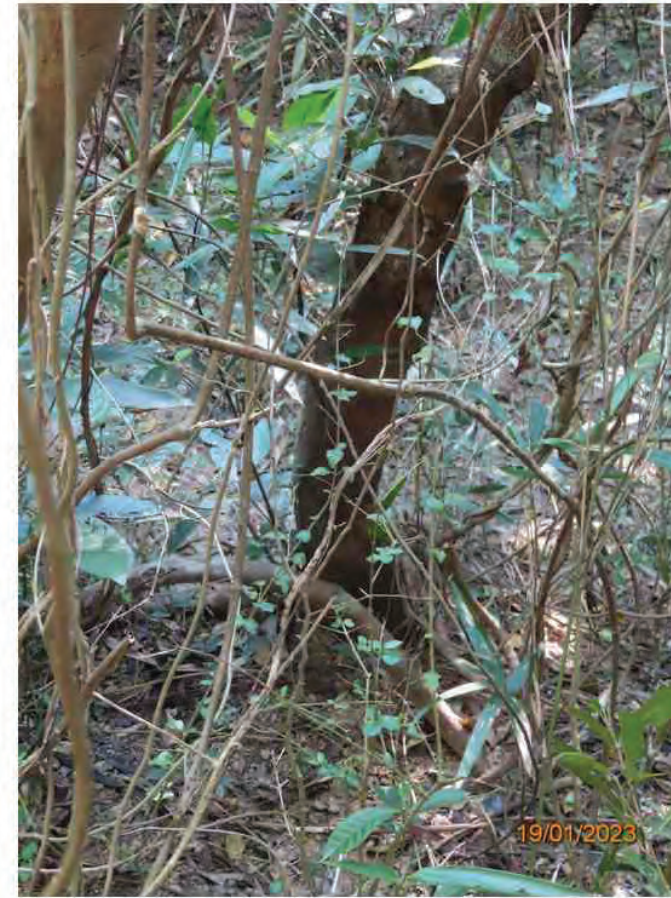
T3900-Tag



T3901-Overview



T3901-Root



T3902-Root



T3902-Tag



T3901-Tag



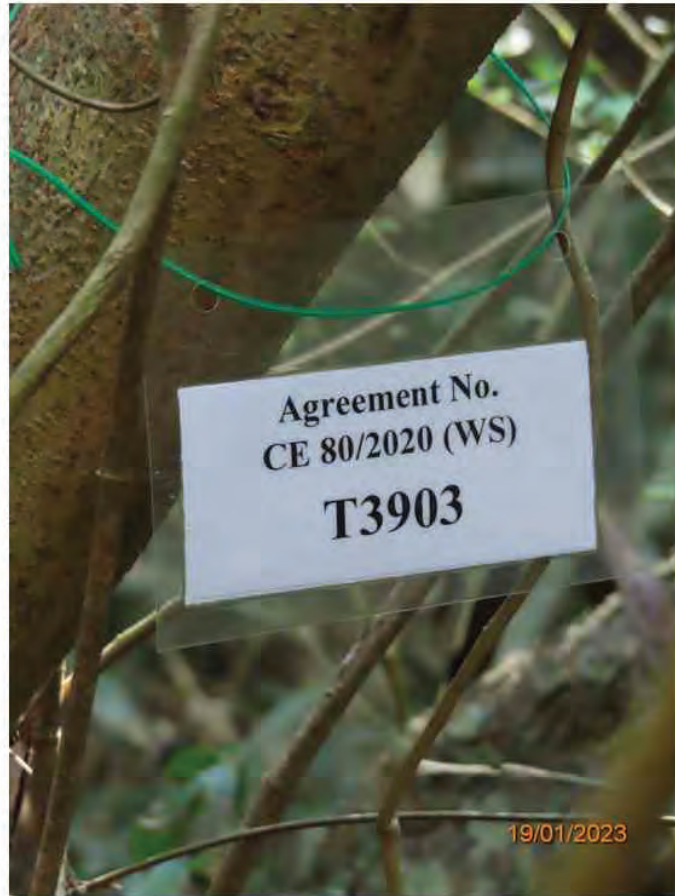
T3902-Overview



T3903-Overview



T3903-Root



T3903-Tag



T3904-Overview



T3905-Overview



T3905-Root



T3904-Root



T3904-Tag



T3905-Tag



T3906-Overview



T3906-Root



T3906-Tag



T3907-Root



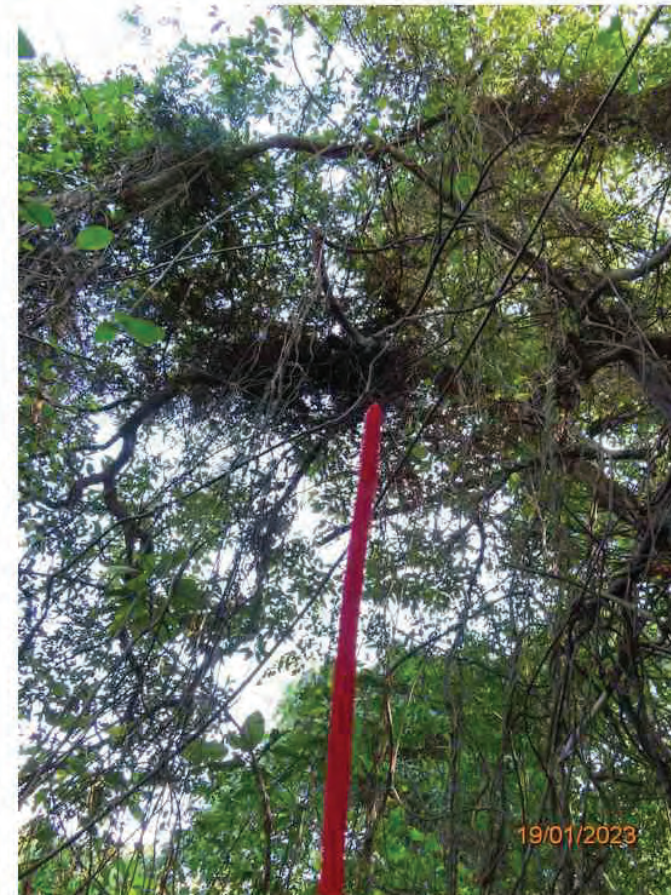
T3907-Tag



T3907-Overview_Crown



T3907-Overview_Trunk



T3908-Overview_Crown



T3908-Overview_Trunk



T3908-Root



T3908-Tag



T3909-Tag



T3910-Overview



T3909-Overview



T3909-Root



T3910-Root



T3910-Tag



T3911-Overview



T3911-Root