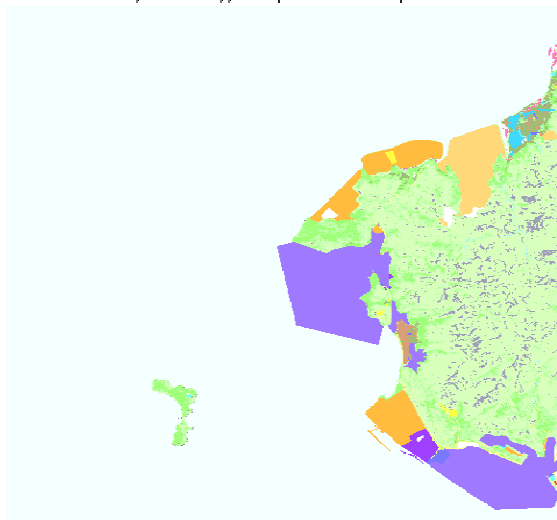


Grid 1242

Code	Color Sample	Hong Kong Planning Department Classification	Roughness	Albedo	Bowen Ratio	Grid Count	Percent	Albedo x Perce	b^n/Sn
1		Private Residential	1	0.18	1.5	0	0.00%	0	1
2		Public Residential	1	0.18	1.5	0	0.00%	0	1
3		Rural Settlement	0.375	0.165	0.9	2018	0.20%	0.00033297	0.999787405
11		Commercial/Business and Office	1	0.18	1.5	30	0.00%	0.0000054	1.000012164
21		Industrial Land	0.7	0.18	1.5	2470	0.25%	0.0004446	1.001002
22		Industrial Estates/Science and Technology Parks	0.7	0.18	1.5	50716	5.07%	0.00912888	1.020776455
23		Warehouse and Open Storage	0.7	0.18	1.5	1000	0.10%	0.00018	1.000405547
31		Government, Institutional and Community Facilities	0.7	0.18	1.5	238	0.02%	0.00004284	1.000096505
32		Open Space and Recreation	0.04	0.15	1	41	0.00%	0.00000615	1
41		Roads and Transport Facilities	0.7	0.18	1.5	1823	0.18%	0.00032814	1.000739436
42		Railways	0.7	0.18	1.5	0	0.00%	0	1
43		Airport	0.07	0.18	1.5	0	0.00%	0	1
44		Port Facilities	0.7	0.18	1.5	16	0.00%	0.00000288	1.000006487
51		Cemeteries/Funeral Facilities	0.7	0.18	1.5	799	0.08%	0.00014382	1.000324019
52		Utilities	0.7	0.18	1.5	16148	1.61%	0.00290664	1.006568932
53		Vacant Land/Construction in Progress	0.2	0.18	1	2023	0.20%	0.00036414	1
54		Others	0.2	0.18	1	12103	1.21%	0.00217854	1
61		Agricultural Land	0.1575	0.18	0.55	3778	0.38%	0.00068004	0.997743921
62		Fish Ponds/Gei Wais	0.001	0.1	0.1	1633	0.16%	0.0001633	0.996246939
71		Woodland	1.05	0.1625	0.75	20060	2.01%	0.00325975	0.994245717
72		Shrubland	0.3	0.18	1.25	25263	2.53%	0.00454734	1.005653195
73		Grassland	0.065	0.185	0.8	117554	11.76%	0.02174749	0.974109638
74		Mangrove/Swamp	0.065	0.14	0.225	581	0.06%	0.00008134	0.999133724
81		Badland	0.15	0.1625	0.75	10997	1.10%	0.001787013	0.996841359
83		Rocky Shore	0.05	0.2	4.75	215	0.02%	0.000043	1.000335057
91		Reservoirs	0.001	0.1	0.1	0	0.00%	0	1
92		Streams and Nullahs	0.001	0.1	0.1	669	0.07%	0.0000669	0.998460756
99		SZ Residential *	1	0.18	1.5	0	0.00%	0	1
0		Open Sea *	0.001	0.1	0.1	729825	72.98%	0.0729825	0.186283762
			0.121424	0.184774	1000000				

* Outside Hong Kong border, not belong to PlanD categories.

Center: X=807746, Y=829216, Z=0.0, Met Year=2019;

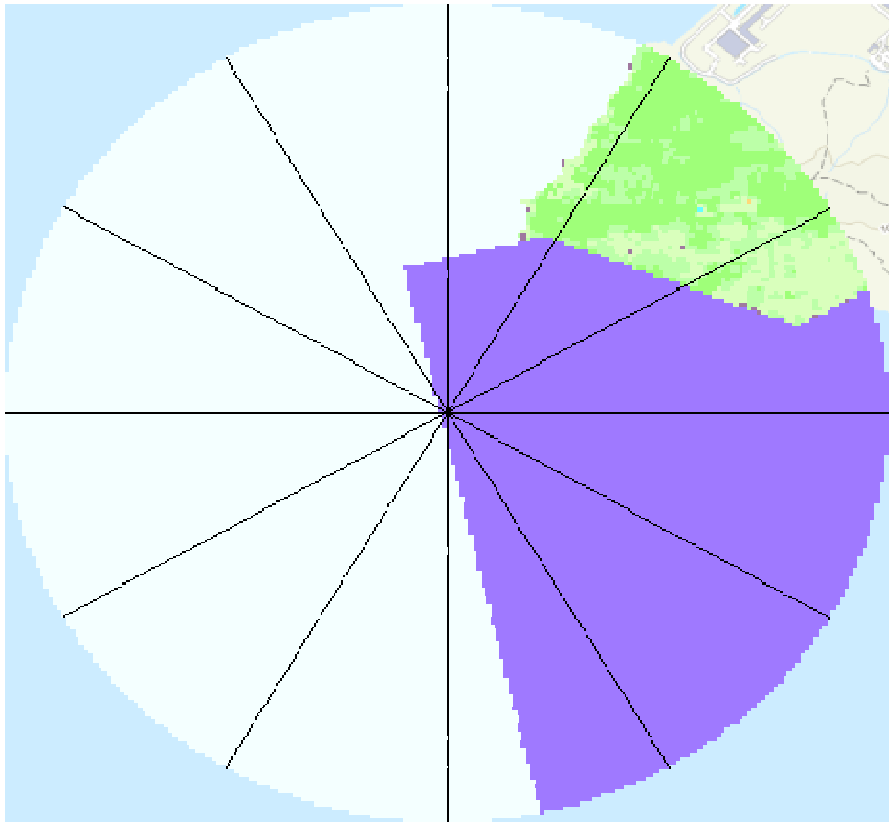


Custom Land Utilization in Hong Kong

Grid 1242

Angle	Group	Inverse-distance Sum	Roughness
0	0 - 30	5.176452751	0.029432
30	30 - 60	5.31768931	0.614719
60	60 - 90	5.176452751	0.554626
90	90 - 120	5.176452751	0.700000
120	120 - 150	5.31768931	0.700000
150	150 - 180	5.176452751	0.078360
180	180 - 210	5.176452751	0.001180
210	210 - 240	5.31768931	0.001190
240	240 - 270	5.176452751	0.001000
270	270 - 300	5.176452751	0.001083
300	300 - 330	5.31768931	0.001316
330	330 - 360	5.176452751	0.004727

Center: X=807745, Y=829215, Z=0.0; Met Year=2019;



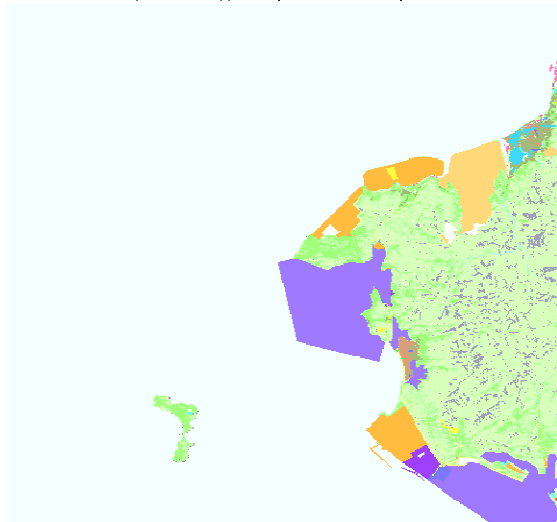
Custom Land Utilization in Hong Kong

Grid 1343

Code	Color Sample	Hong Kong Planning Department Classification	Roughness	Albedo	Bowen Ratio	Grid Count	Percent	Albedo x Perce	b^n/Sn
1		Private Residential	1	0.18	1.5	0	0.00%	0	1
2		Public Residential	1	0.18	1.5	0	0.00%	0	1
3		Rural Settlement	0.375	0.165	0.9	1979	0.20%	0.000326535	0.999791513
11		Commercial/Business and Office	1	0.18	1.5	30	0.00%	0.0000054	1.000012164
21		Industrial Land	0.7	0.18	1.5	2458	0.25%	0.00044244	1.00099713
22		Industrial Estates/Science and Technology Parks	0.7	0.18	1.5	49786	4.98%	0.00896148	1.020391611
23		Warehouse and Open Storage	0.7	0.18	1.5	1000	0.10%	0.00018	1.000405547
31		Government, Institutional and Community Facilities	0.7	0.18	1.5	238	0.02%	0.00004284	1.000096505
32		Open Space and Recreation	0.04	0.15	1	41	0.00%	0.00000615	1
41		Roads and Transport Facilities	0.7	0.18	1.5	1753	0.18%	0.00031554	1.000711033
42		Railways	0.7	0.18	1.5	0	0.00%	0	1
43		Airport	0.07	0.18	1.5	0	0.00%	0	1
44		Port Facilities	0.7	0.18	1.5	16	0.00%	0.00000288	1.000006487
51		Cemeteries/Funeral Facilities	0.7	0.18	1.5	788	0.08%	0.00014184	1.000319558
52		Utilities	0.7	0.18	1.5	16148	1.61%	0.00290664	1.006568932
53		Vacant Land/Construction in Progress	0.2	0.18	1	1987	0.20%	0.00035766	1
54		Others	0.2	0.18	1	12100	1.21%	0.002178	1
61		Agricultural Land	0.1575	0.18	0.55	3756	0.38%	0.00067608	0.997757043
62		Fish Ponds/Gei Wais	0.001	0.1	0.1	1607	0.16%	0.0001607	0.996306583
71		Woodland	1.05	0.1625	0.75	19987	2.00%	0.003247888	0.994266597
72		Shrubland	0.3	0.18	1.25	25119	2.51%	0.00452142	1.005620881
73		Grassland	0.065	0.185	0.8	116400	11.64%	0.021534	0.974360511
74		Mangrove/Swamp	0.065	0.14	0.225	569	0.06%	0.00007966	0.999151608
81		Badland	0.15	0.1625	0.75	10934	1.09%	0.001776775	0.996859426
83		Rocky Shore	0.05	0.2	4.75	215	0.02%	0.000043	1.000335057
91		Reservoirs	0.001	0.1	0.1	0	0.00%	0	1
92		Streams and Nullahs	0.001	0.1	0.1	669	0.07%	0.0000669	0.998460756
99		SZ Residential *	1	0.18	1.5	0	0.00%	0	1
0		Open Sea *	0.001	0.1	0.1	732420	73.24%	0.073242	0.185173997
			0.121216	0.183663	1000000				

* Outside Hong Kong border, not belong to PlanD categories.

Center: X=807726, Y=829675, Z=0.0, Met Year=2019;

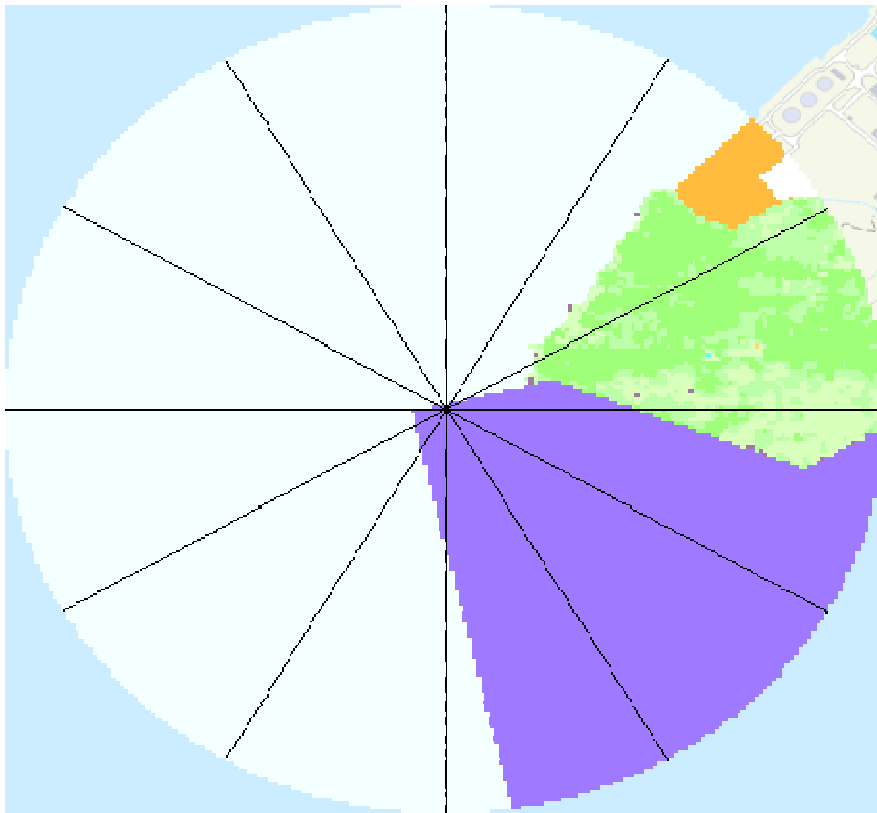


Custom Land Utilization in Hong Kong

Grid 1343

Angle	Group	Inverse-distance Sum	Roughness
0	0 - 30	5.176452751	0.001000
30	30 - 60	5.31768931	0.012788
60	60 - 90	5.176452751	0.361148
90	90 - 120	5.176452751	0.577520
120	120 - 150	5.31768931	0.700000
150	150 - 180	5.176452751	0.296363
180	180 - 210	5.176452751	0.003038
210	210 - 240	5.31768931	0.002005
240	240 - 270	5.176452751	0.001544
270	270 - 300	5.176452751	0.001138
300	300 - 330	5.31768931	0.001190
330	330 - 360	5.176452751	0.001000

Center: X=807725, Y=829575, Z=0.0; Met Year=2019;



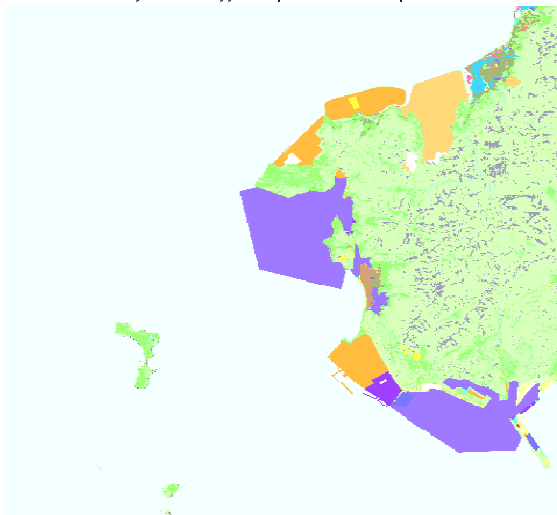
Custom Land Utilization in Hong Kong

Grid 1242

Code	Color Sample	Hong Kong Planning Department Classification	Roughness	Albedo	Bowen Ratio	Grid Count	Percent	Albedo x Perce	b^n/Sn
1		Private Residential	1	0.18	1.5	0	0.00%	0	1
2		Public Residential	1	0.18	1.5	0	0.00%	0	1
3		Rural Settlement	0.375	0.165	0.9	2149	0.21%	0.000354585	0.999773606
11		Commercial/Business and Office	1	0.18	1.5	30	0.00%	0.0000054	1.000012164
21		Industrial Land	0.7	0.18	1.5	2616	0.26%	0.00047088	1.001061259
22		Industrial Estates/Science and Technology Parks	0.7	0.18	1.5	51516	5.15%	0.00927288	1.02110762
23		Warehouse and Open Storage	0.7	0.18	1.5	1413	0.14%	0.00025434	1.000573086
31		Government, Institutional and Community Facilities	0.7	0.18	1.5	319	0.03%	0.00005742	1.000129352
32		Open Space and Recreation	0.04	0.15	1	87	0.01%	0.00001305	1
41		Roads and Transport Facilities	0.7	0.18	1.5	2613	0.26%	0.00047034	1.001060042
42		Railways	0.7	0.18	1.5	0	0.00%	0	1
43		Airport	0.07	0.18	1.5	0	0.00%	0	1
44		Port Facilities	0.7	0.18	1.5	16	0.00%	0.00000288	1.000006487
51		Cemeteries/Funeral Facilities	0.7	0.18	1.5	817	0.08%	0.00014706	1.00033132
52		Utilities	0.7	0.18	1.5	16178	1.62%	0.00291204	1.006581176
53		Vacant Land/Construction in Progress	0.2	0.18	1	2478	0.25%	0.00044604	1
54		Others	0.2	0.18	1	12107	1.21%	0.00217926	1
61		Agricultural Land	0.1575	0.18	0.55	4156	0.42%	0.00074808	0.997518474
62		Fish Ponds/Gei Wais	0.001	0.1	0.1	1735	0.17%	0.0001735	0.996012984
71		Woodland	1.05	0.1625	0.75	22259	2.23%	0.003617088	0.993616944
72		Shrubland	0.3	0.18	1.25	29417	2.94%	0.00529506	1.006585806
73		Grassland	0.065	0.185	0.8	157020	15.70%	0.0290487	0.965568724
74		Mangrove/Swamp	0.065	0.14	0.225	346	0.03%	0.00004844	0.999484021
81		Badland	0.15	0.1625	0.75	14541	1.45%	0.002362913	0.995825552
83		Rocky Shore	0.05	0.2	4.75	260	0.03%	0.000052	1.0004052
91		Reservoirs	0.001	0.1	0.1	0	0.00%	0	1
92		Streams and Nullahs	0.001	0.1	0.1	669	0.07%	0.0000669	0.998460756
99		SZ Residential *	1	0.18	1.5	0	0.00%	0	1
0		Open Sea *	0.001	0.1	0.1	677258	67.73%	0.0677258	0.210252903
			0.125725	0.206751	1000000				

* Outside Hong Kong border, not belong to PlanD categories.

Center: X=808416, Y=828195, Z=0.0, Met Year=2019;

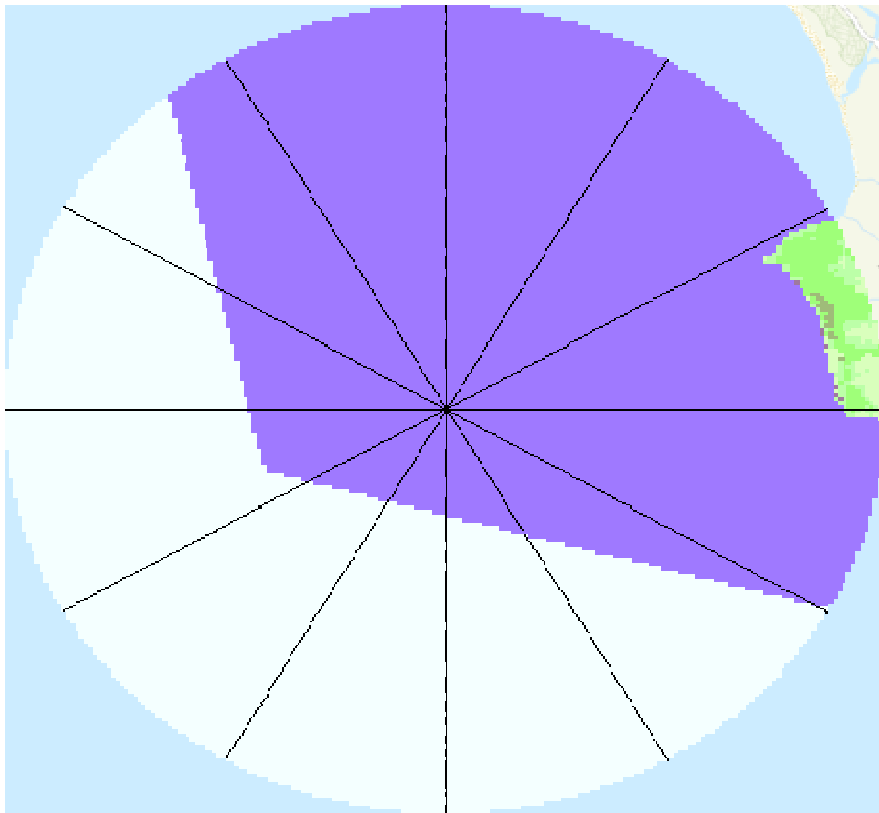


Custom Land Utilization in Hong Kong

Grid 1242

Angle	Group	Inverse-distance Sum	Roughness
0	0 - 30	5.176452751	0.700000
30	30 - 60	5.31768931	0.700000
60	60 - 90	5.176452751	0.654098
90	90 - 120	5.176452751	0.694457
120	120 - 150	5.31768931	0.039736
150	150 - 180	5.176452751	0.006797
180	180 - 210	5.176452751	0.005106
210	210 - 240	5.31768931	0.007675
240	240 - 270	5.176452751	0.015600
270	270 - 300	5.176452751	0.026132
300	300 - 330	5.31768931	0.231526
330	330 - 360	5.176452751	0.700000

Center: X=808415, Y=82895, Z=0.0; Met Year=2019;



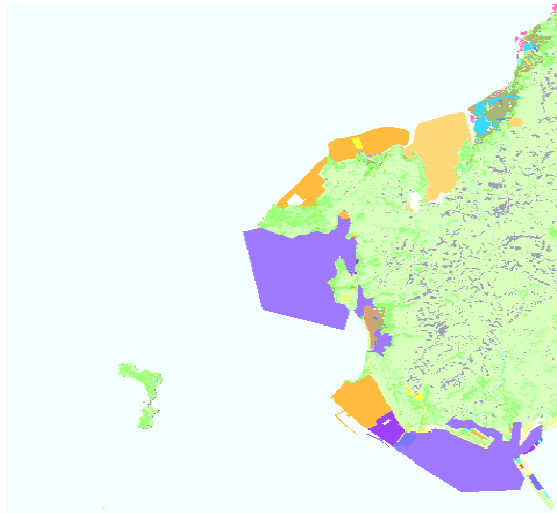
Custom Land Utilization in Hong Kong

Grid 1242

Code	Color Sample	Hong Kong Planning Department Classification	Roughness	Albedo	Bowen Ratio	Grid Count	Percent	Albedo x Perce	b ⁿ /Sn
1		Private Residential	1	0.18	1.5	0	0.00%	0	1
2		Public Residential	1	0.18	1.5	0	0.00%	0	1
3		Rural Settlement	0.375	0.165	0.9	2372	0.24%	0.00039138	0.999750116
11		Commercial/Business and Office	1	0.18	1.5	30	0.00%	0.0000054	1.000012164
21		Industrial Land	0.7	0.18	1.5	2616	0.26%	0.00047088	1.001061259
22		Industrial Estates/Science and Technology Parks	0.7	0.18	1.5	51516	5.15%	0.00927288	1.02110762
23		Warehouse and Open Storage	0.7	0.18	1.5	1441	0.14%	0.00025938	1.000584446
31		Government, Institutional and Community Facilities	0.7	0.18	1.5	317	0.03%	0.00005706	1.000128541
32		Open Space and Recreation	0.04	0.15	1	46	0.00%	0.0000069	1
41		Roads and Transport Facilities	0.7	0.18	1.5	2607	0.26%	0.00046926	1.001057606
42		Railways	0.7	0.18	1.5	0	0.00%	0	1
43		Airport	0.07	0.18	1.5	0	0.00%	0	1
44		Port Facilities	0.7	0.18	1.5	16	0.00%	0.00000288	1.000006487
51		Cemeteries/Funeral Facilities	0.7	0.18	1.5	881	0.09%	0.00015858	1.000357279
52		Utilities	0.7	0.18	1.5	16178	1.62%	0.00291204	1.006581176
53		Vacant Land/Construction in Progress	0.2	0.18	1	2478	0.25%	0.00044604	1
54		Others	0.2	0.18	1	12107	1.21%	0.00217926	1
61		Agricultural Land	0.1575	0.18	0.55	4841	0.48%	0.00087138	0.997110055
62		Fish Ponds/Gei Wais	0.001	0.1	0.1	1875	0.19%	0.0001875	0.995691959
71		Woodland	1.05	0.1625	0.75	22418	2.24%	0.003642925	0.993571495
72		Shrubland	0.3	0.18	1.25	29401	2.94%	0.00529218	1.006582212
73		Grassland	0.065	0.185	0.8	154102	15.41%	0.02850887	0.966197642
74		Mangrove/Swamp	0.065	0.14	0.225	717	0.07%	0.00010038	0.998931055
81		Badland	0.15	0.1625	0.75	14274	1.43%	0.002319525	0.995902046
83		Rocky Shore	0.05	0.2	4.75	233	0.02%	0.0000466	1.000363114
91		Reservoirs	0.001	0.1	0.1	0	0.00%	0	1
92		Streams and Nullahs	0.001	0.1	0.1	669	0.07%	0.0000669	0.998460756
99		SZ Residential *	1	0.18	1.5	0	0.00%	0	1
0		Open Sea *	0.001	0.1	0.1	678865	67.89%	0.0678865	0.209476351
			0.125555	0.205856	1000000				

* Outside Hong Kong border, not belong to PlanD categories.

Center: X=808956, Y=829025, Z=0.0, Met Year=2019;

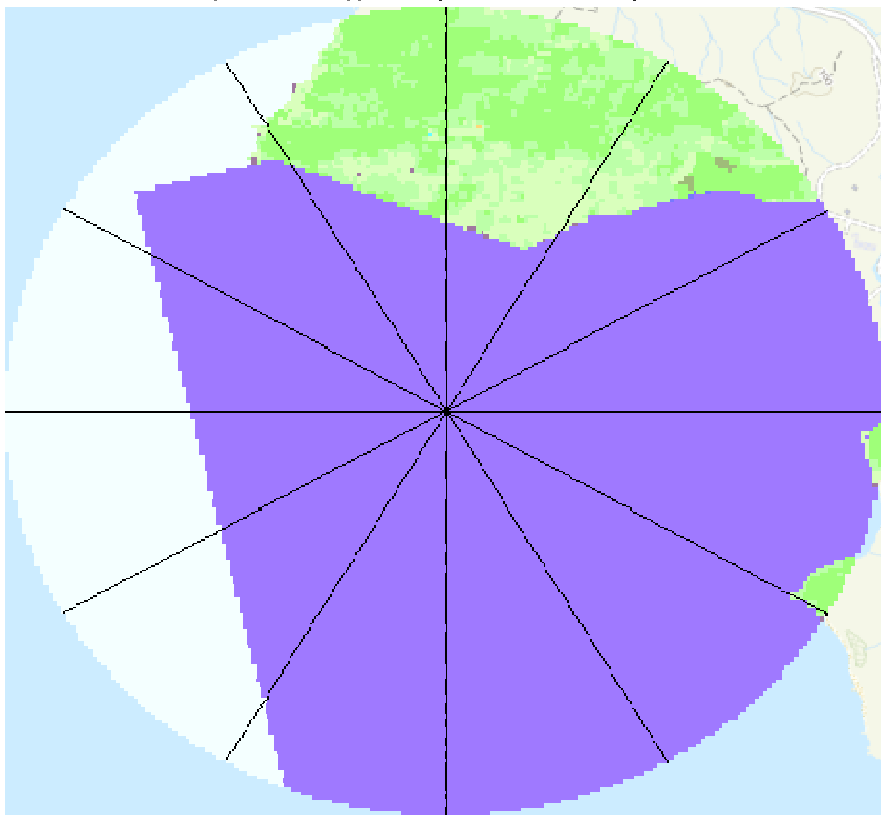


Custom Land Utilization in Hong Kong

Grid 1242

Angle	Group	Inverse-distance Sum	Roughness
0	0 - 30	5.176452751	0.439045
30	30 - 60	5.31768931	0.593945
60	60 - 90	5.176452751	0.700000
90	90 - 120	5.176452751	0.697932
120	120 - 150	5.31768931	0.698596
150	150 - 180	5.176452751	0.700000
180	180 - 210	5.176452751	0.586884
210	210 - 240	5.31768931	0.089203
240	240 - 270	5.176452751	0.041116
270	270 - 300	5.176452751	0.070206
300	300 - 330	5.31768931	0.207833
330	330 - 360	5.176452751	0.417250

Center: X=808355, Y=829025, Z=0.0; Met Year=2019;



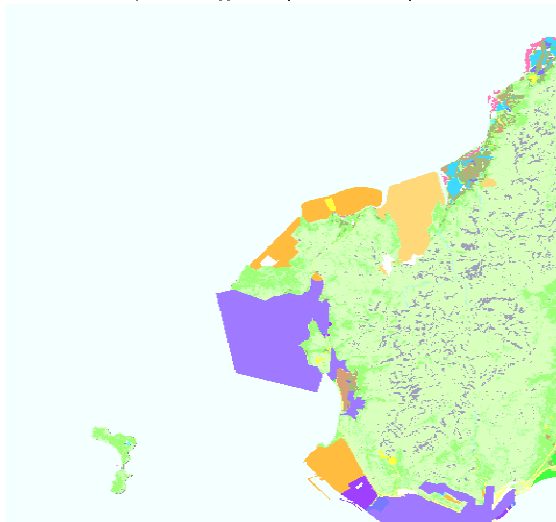
Custom Land Utilization in Hong Kong

Grid 1343

Code	Color Sample	Hong Kong Planning Department Classification	Roughness	Albedo	Bowen Ratio	Grid Count	Percent	Albedo x Perce	b^n/Sn
1		Private Residential	1	0.18	1.5	0	0.00%	0	1
2		Public Residential	1	0.18	1.5	0	0.00%	0	1
3		Rural Settlement	0.375	0.165	0.9	2656	0.27%	0.00043824	0.999720202
11		Commercial/Business and Office	1	0.18	1.5	0	0.00%	0	1
21		Industrial Land	0.7	0.18	1.5	2616	0.26%	0.00047088	1.001061259
22		Industrial Estates/Science and Technology Parks	0.7	0.18	1.5	41093	4.11%	0.00739674	1.016801359
23		Warehouse and Open Storage	0.7	0.18	1.5	1346	0.13%	0.00024228	1.000545905
31		Government, Institutional and Community Facilities	0.7	0.18	1.5	200	0.02%	0.000036	1.000081096
32		Open Space and Recreation	0.04	0.15	1	967	0.10%	0.00014505	1
41		Roads and Transport Facilities	0.7	0.18	1.5	2809	0.28%	0.00050562	1.0011396
42		Railways	0.7	0.18	1.5	0	0.00%	0	1
43		Airport	0.07	0.18	1.5	0	0.00%	0	1
44		Port Facilities	0.7	0.18	1.5	0	0.00%	0	1
51		Cemeteries/Funeral Facilities	0.7	0.18	1.5	1085	0.11%	0.0001953	1.000440026
52		Utilities	0.7	0.18	1.5	16177	1.62%	0.00291186	1.006580768
53		Vacant Land/Construction in Progress	0.2	0.18	1	2472	0.25%	0.00044496	1
54		Others	0.2	0.18	1	12104	1.21%	0.00217872	1
61		Agricultural Land	0.1575	0.18	0.55	6060	0.61%	0.0010908	0.996383663
62		Fish Ponds/Gei Wais	0.001	0.1	0.1	2977	0.30%	0.0002977	0.993168645
71		Woodland	1.05	0.1625	0.75	29463	2.95%	0.004787738	0.991559843
72		Shrubland	0.3	0.18	1.25	34426	3.44%	0.00619668	1.007711522
73		Grassland	0.065	0.185	0.8	175381	17.54%	0.032445485	0.961620748
74		Mangrove/Swamp	0.065	0.14	0.225	1164	0.12%	0.00016296	0.99826522
81		Badland	0.15	0.1625	0.75	16213	1.62%	0.002634613	0.995346671
83		Rocky Shore	0.05	0.2	4.75	232	0.02%	0.0000464	1.000361555
91		Reservoirs	0.001	0.1	0.1	0	0.00%	0	1
92		Streams and Nullahs	0.001	0.1	0.1	669	0.07%	0.0000669	0.998460756
99		SZ Residential *	1	0.18	1.5	0	0.00%	0	1
0		Open Sea *	0.001	0.1	0.1	649890	64.99%	0.064989	0.223928824
			0.127684	0.216925	1000000				

* Outside Hong Kong border, not belong to PlanD categories.

Center: X=808836, Y=830165, Z=11.0; Met Year=2019;

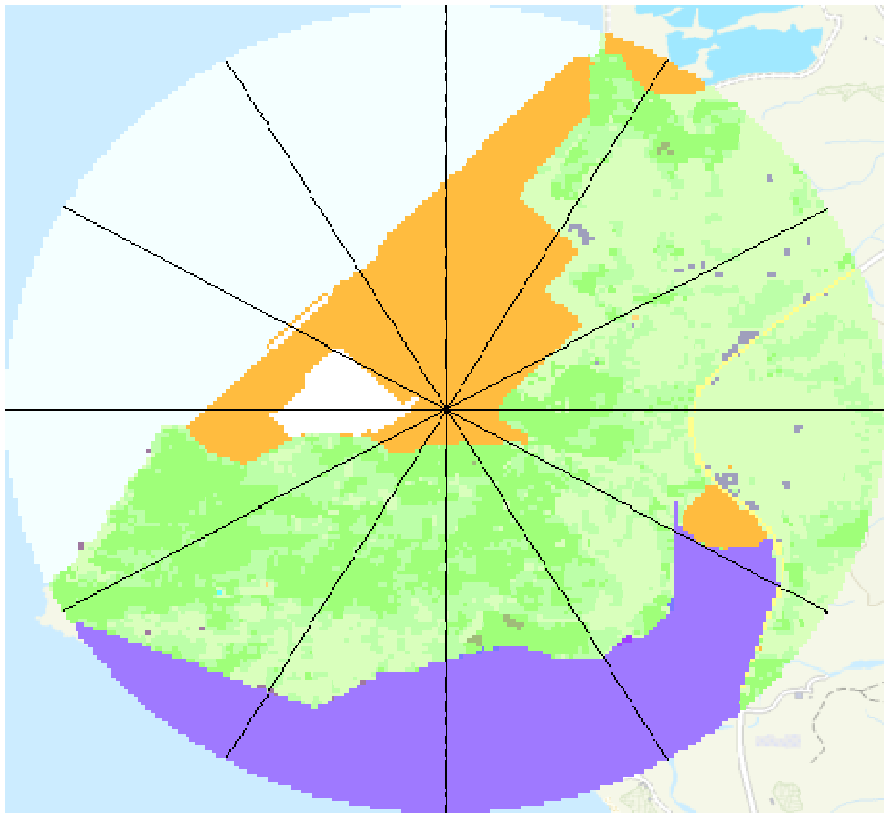


Custom Land Utilization in Hong Kong

Grid 1343

Angle	Group	Inverse-distance Sum	Roughness
0	0 - 30	5.176452751	0.180392
30	30 - 60	5.31768931	0.251571
60	60 - 90	5.176452751	0.197394
90	90 - 120	5.176452751	0.260944
120	120 - 150	5.31768931	0.439944
150	150 - 180	5.176452751	0.636541
180	180 - 210	5.176452751	0.479727
210	210 - 240	5.31768931	0.514585
240	240 - 270	5.176452751	0.119521
270	270 - 300	5.176452751	0.014790
300	300 - 330	5.31768931	0.014272
330	330 - 360	5.176452751	0.019849

Center: X=808835, Y=83065, Z=11.0; Met Year=2019;



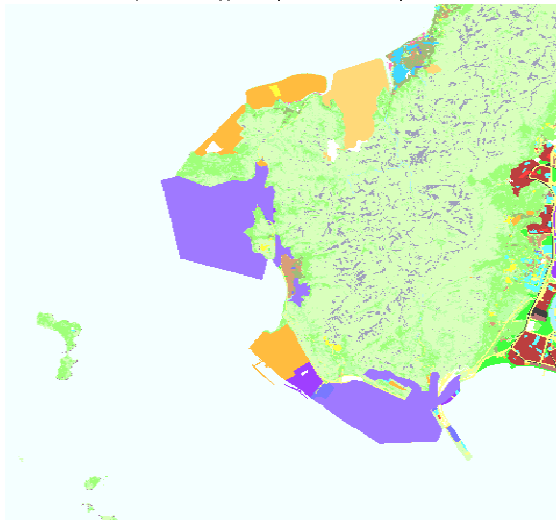
Custom Land Utilization in Hong Kong

Grid 1441

Code	Color Sample	Hong Kong Planning Department Classification	Roughness	Albedo	Bowen Ratio	Grid Count	Percent	Albedo x Perce	b^n/Sn
1		Private Residential	1	0.18	1.5	890	0.09%	0.0001602	1.000360929
2		Public Residential	1	0.18	1.5	8031	0.80%	0.00144558	1.003261598
3		Rural Settlement	0.375	0.165	0.9	3113	0.31%	0.000513645	0.999672066
11		Commercial/Business and Office	1	0.18	1.5	435	0.04%	0.0000783	1.000176393
21		Industrial Land	0.7	0.18	1.5	3560	0.36%	0.0006408	1.001444498
22		Industrial Estates/Science and Technology Parks	0.7	0.18	1.5	51516	5.15%	0.00927288	1.02110762
23		Warehouse and Open Storage	0.7	0.18	1.5	1434	0.14%	0.00025812	1.000581606
31		Government, Institutional and Community Facilities	0.7	0.18	1.5	3247	0.32%	0.00058446	1.001317412
32		Open Space and Recreation	0.04	0.15	1	4210	0.42%	0.0006315	1
41		Roads and Transport Facilities	0.7	0.18	1.5	8218	0.82%	0.00147924	1.00333767
42		Railways	0.7	0.18	1.5	1124	0.11%	0.00020232	1.000455847
43		Airport	0.07	0.18	1.5	0	0.00%	0	1
44		Port Facilities	0.7	0.18	1.5	16	0.00%	0.00000288	1.000006487
51		Cemeteries/Funeral Facilities	0.7	0.18	1.5	1581	0.16%	0.00028458	1.000641246
52		Utilities	0.7	0.18	1.5	16676	1.67%	0.00300168	1.006784447
53		Vacant Land/Construction in Progress	0.2	0.18	1	3210	0.32%	0.0005778	1
54		Others	0.2	0.18	1	12153	1.22%	0.00218754	1
61		Agricultural Land	0.1575	0.18	0.55	4857	0.49%	0.00087426	0.997100517
62		Fish Ponds/Gei Wais	0.001	0.1	0.1	1578	0.16%	0.0001578	0.996373114
71		Woodland	1.05	0.1625	0.75	40604	4.06%	0.00659815	0.988386916
72		Shrubland	0.3	0.18	1.25	39374	3.94%	0.00708732	1.008824765
73		Grassland	0.065	0.185	0.8	194528	19.45%	0.03598768	0.957520959
74		Mangrove/Swamp	0.065	0.14	0.225	282	0.03%	0.00003948	0.999579442
81		Badland	0.15	0.1625	0.75	18126	1.81%	0.002945475	0.994799047
83		Rocky Shore	0.05	0.2	4.75	274	0.03%	0.0000548	1.000427023
91		Reservoirs	0.001	0.1	0.1	0	0.00%	0	1
92		Streams and Nullahs	0.001	0.1	0.1	1350	0.14%	0.000135	0.996896336
99		SZ Residential *	1	0.18	1.5	0	0.00%	0	1
0		Open Sea *	0.001	0.1	0.1	579613	57.96%	0.0579613	0.263261287
				0.133163	0.257465	1000000			

* Outside Hong Kong border, not belong to PlanD categories.

Center: X=809826, Y=827975, Z=5.0; Met Year=2019;

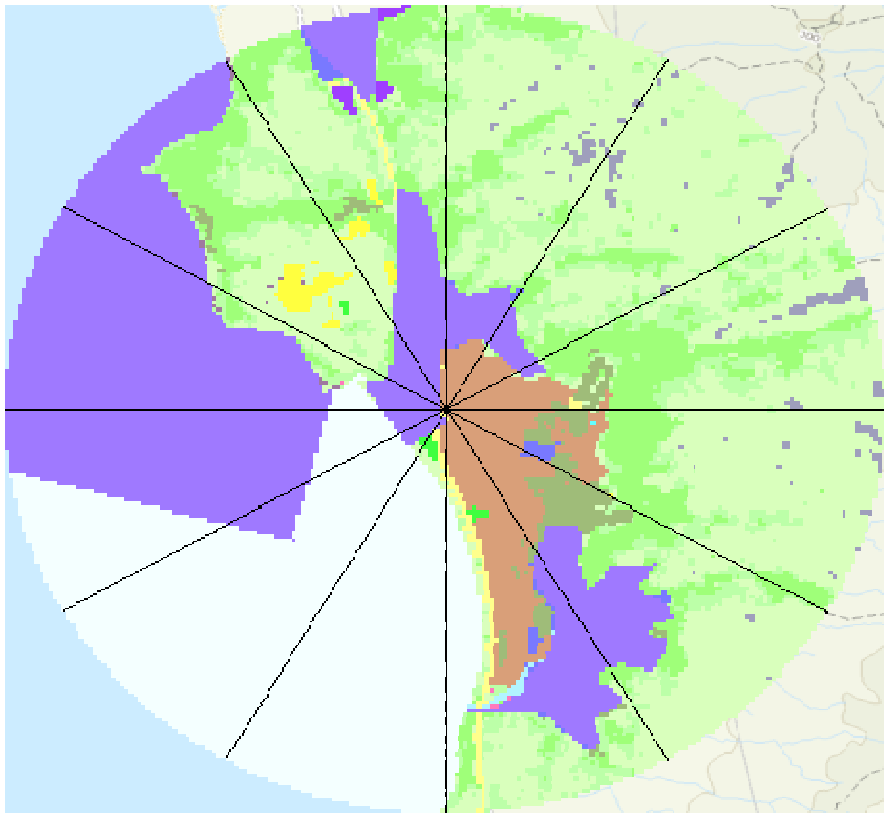


Custom Land Utilization in Hong Kong

Grid 1441

Angle	Group	Inverse-distance Sum	Roughness
0	0 - 30	5.176452751	0.201276
30	30 - 60	5.31768931	0.168141
60	60 - 90	5.176452751	0.272593
90	90 - 120	5.176452751	0.198685
120	120 - 150	5.31768931	0.280404
150	150 - 180	5.176452751	0.136322
180	180 - 210	5.176452751	0.002293
210	210 - 240	5.31768931	0.003164
240	240 - 270	5.176452751	0.066568
270	270 - 300	5.176452751	0.413313
300	300 - 330	5.31768931	0.292476
330	330 - 360	5.176452751	0.383711

Center: X=809825, Y=827975, Z=5.0; Met Year=2019;



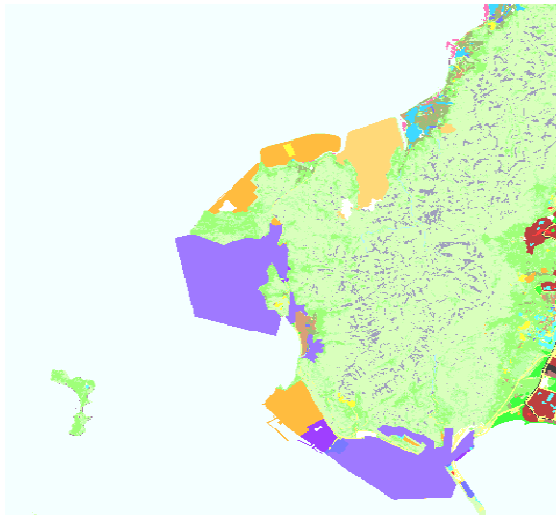
Custom Land Utilization in Hong Kong

Grid 1442

Code	Color Sample	Hong Kong Planning Department Classification	Roughness	Albedo	Bowen Ratio	Grid Count	Percent	Albedo x Perce	b^n/Sn
1		Private Residential	1	0.18	1.5	384	0.04%	0.00006912	1.000155711
2		Public Residential	1	0.18	1.5	5980	0.60%	0.0010764	1.002427623
3		Rural Settlement	0.375	0.165	0.9	3261	0.33%	0.000538065	0.999656478
11		Commercial/Business and Office	1	0.18	1.5	340	0.03%	0.0000612	1.000137868
21		Industrial Land	0.7	0.18	1.5	2621	0.26%	0.00047178	1.001063289
22		Industrial Estates/Science and Technology Parks	0.7	0.18	1.5	51516	5.15%	0.00927288	1.02110762
23		Warehouse and Open Storage	0.7	0.18	1.5	1653	0.17%	0.00029754	1.000670458
31		Government, Institutional and Community Facilities	0.7	0.18	1.5	2152	0.22%	0.00038736	1.000872942
32		Open Space and Recreation	0.04	0.15	1	2877	0.29%	0.00043155	1
41		Roads and Transport Facilities	0.7	0.18	1.5	5447	0.54%	0.00098046	1.002211009
42		Railways	0.7	0.18	1.5	701	0.07%	0.00012618	1.000284271
43		Airport	0.07	0.18	1.5	0	0.00%	0	1
44		Port Facilities	0.7	0.18	1.5	16	0.00%	0.00000288	1.000006487
51		Cemeteries/Funeral Facilities	0.7	0.18	1.5	1681	0.17%	0.00030258	1.000681819
52		Utilities	0.7	0.18	1.5	16581	1.66%	0.00298458	1.006745667
53		Vacant Land/Construction in Progress	0.2	0.18	1	2924	0.29%	0.00052632	1
54		Others	0.2	0.18	1	12109	1.21%	0.00217962	1
61		Agricultural Land	0.1575	0.18	0.55	6426	0.64%	0.00115668	0.996165669
62		Fish Ponds/Gei Wais	0.001	0.1	0.1	2387	0.24%	0.0002387	0.994518806
71		Woodland	1.05	0.1625	0.75	40547	4.05%	0.006588888	0.988403123
72		Shrubland	0.3	0.18	1.25	40819	4.08%	0.00734742	1.009150105
73		Grassland	0.065	0.185	0.8	200420	20.04%	0.0370777	0.956262874
74		Mangrove/Swamp	0.065	0.14	0.225	823	0.08%	0.00011522	0.998773121
81		Badland	0.15	0.1625	0.75	18639	1.86%	0.003028838	0.994652244
83		Rocky Shore	0.05	0.2	4.75	233	0.02%	0.0000466	1.000363114
91		Reservoirs	0.001	0.1	0.1	0	0.00%	0	1
92		Streams and Nullahs	0.001	0.1	0.1	669	0.07%	0.0000669	0.998460756
99		SZ Residential *	1	0.18	1.5	0	0.00%	0	1
0		Open Sea *	0.001	0.1	0.1	578794	57.88%	0.0578794	0.263758218
			0.133255	0.256319	1000000				

* Outside Hong Kong border, not belong to PlanD categories.

Center: X=809576, Y=829155, Z=5.0; Met Year=2019;

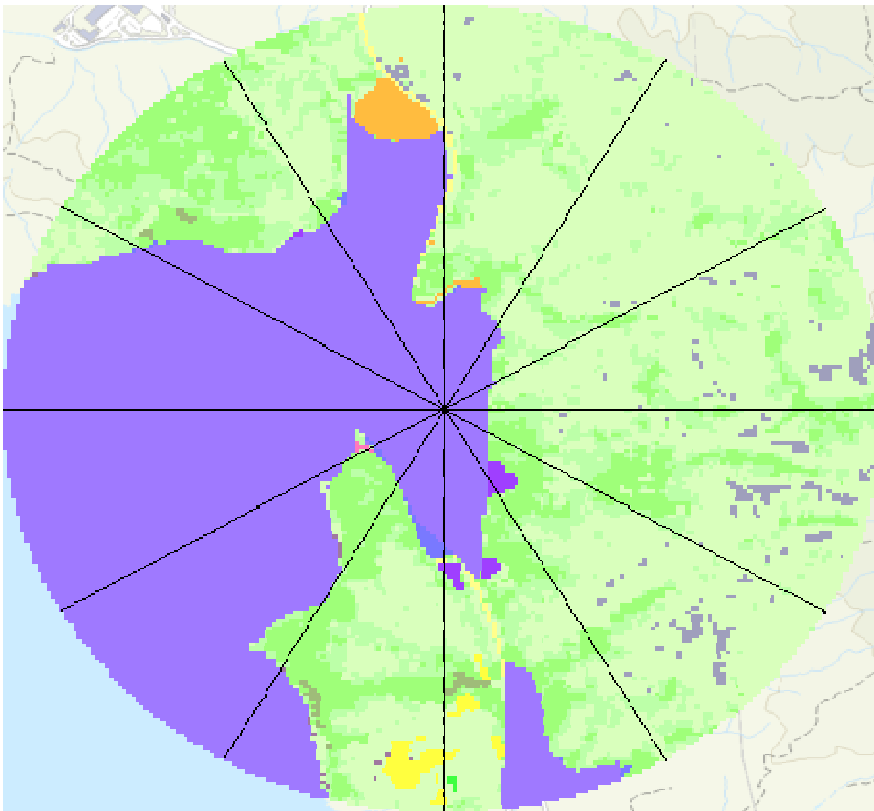


Custom Land Utilization in Hong Kong

Grid 1442

Angle	Group	Inverse-distance Sum	Roughness
0	0 - 30	5.176452751	0.206651
30	30 - 60	5.31768931	0.136760
60	60 - 90	5.176452751	0.127634
90	90 - 120	5.176452751	0.215190
120	120 - 150	5.31768931	0.203166
150	150 - 180	5.176452751	0.387361
180	180 - 210	5.176452751	0.356515
210	210 - 240	5.31768931	0.708164
240	240 - 270	5.176452751	0.687162
270	270 - 300	5.176452751	0.654050
300	300 - 330	5.31768931	0.575080
330	330 - 360	5.176452751	0.405087

Center: X=809575, Y=82955, Z=5.0; Met Year=2019;



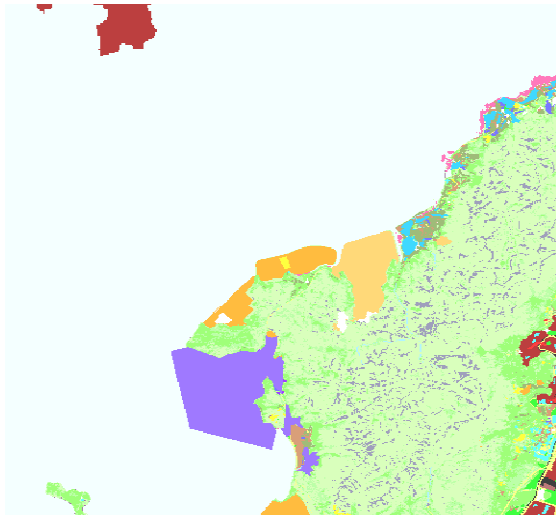
Custom Land Utilization in Hong Kong

Grid 1444

Code	Color Sample	Hong Kong Planning Department Classification	Roughness	Albedo	Bowen Ratio	Grid Count	Percent	Albedo x Perce	b^n/Sn
1		Private Residential	1	0.18	1.5	292	0.03%	0.00005256	1.000118403
2		Public Residential	1	0.18	1.5	5318	0.53%	0.00095724	1.00215859
3		Rural Settlement	0.375	0.165	0.9	3957	0.40%	0.000652905	0.999583175
11		Commercial/Business and Office	1	0.18	1.5	334	0.03%	0.00006012	1.000135435
21		Industrial Land	0.7	0.18	1.5	91	0.01%	0.00001638	1.000036898
22		Industrial Estates/Science and Technology Parks	0.7	0.18	1.5	30163	3.02%	0.00542934	1.012305137
23		Warehouse and Open Storage	0.7	0.18	1.5	947	0.09%	0.00017046	1.000384049
31		Government, Institutional and Community Facilities	0.7	0.18	1.5	2265	0.23%	0.0004077	1.0009188
32		Open Space and Recreation	0.04	0.15	1	2307	0.23%	0.00034605	1
41		Roads and Transport Facilities	0.7	0.18	1.5	3190	0.32%	0.0005742	1.001294271
42		Railways	0.7	0.18	1.5	783	0.08%	0.00014094	1.00031753
43		Airport	0.07	0.18	1.5	0	0.00%	0	1
44		Port Facilities	0.7	0.18	1.5	0	0.00%	0	1
51		Cemeteries/Funeral Facilities	0.7	0.18	1.5	1710	0.17%	0.0003078	1.000693586
52		Utilities	0.7	0.18	1.5	11960	1.20%	0.0021528	1.00486114
53		Vacant Land/Construction in Progress	0.2	0.18	1	2231	0.22%	0.00040158	1
54		Others	0.2	0.18	1	12089	1.21%	0.00217602	1
61		Agricultural Land	0.1575	0.18	0.55	7452	0.75%	0.00134136	0.995554828
62		Fish Ponds/Gei Wais	0.001	0.1	0.1	3803	0.38%	0.0003803	0.991281497
71		Woodland	1.05	0.1625	0.75	38157	3.82%	0.006200513	0.989082944
72		Shrubland	0.3	0.18	1.25	36328	3.63%	0.00653904	1.008139304
73		Grassland	0.065	0.185	0.8	192033	19.20%	0.035526105	0.958054201
74		Mangrove/Swamp	0.065	0.14	0.225	2062	0.21%	0.00028868	0.996928933
81		Badland	0.15	0.1625	0.75	18492	1.85%	0.00300495	0.994694308
83		Rocky Shore	0.05	0.2	4.75	162	0.02%	0.0000324	1.000252451
91		Reservoirs	0.001	0.1	0.1	0	0.00%	0	1
92		Streams and Nullahs	0.001	0.1	0.1	698	0.07%	0.0000698	0.998394086
99		SZ Residential *	1	0.18	1.5	8303	0.83%	0.00149454	1.00337225
0		Open Sea *	0.001	0.1	0.1	614873	61.49%	0.0614873	0.242731981
			0.130211	0.232608	1000000				

* Outside Hong Kong border, not belong to PlanD categories.

Center: X=809656, Y=831355, Z=11.0; Met Year=2019;

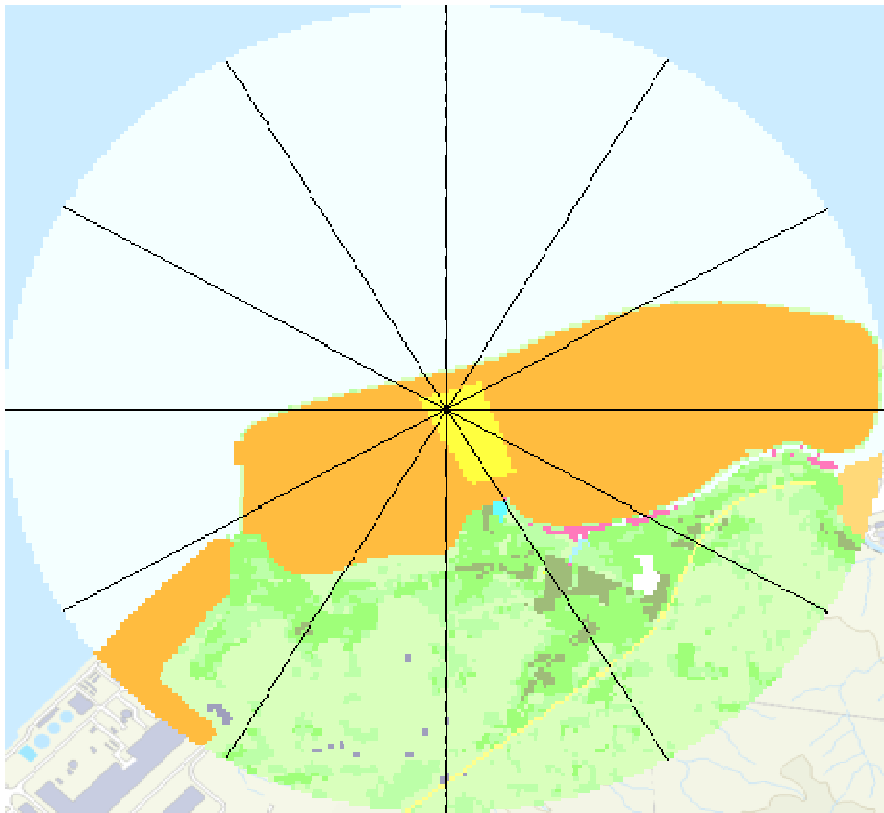


Custom Land Utilization in Hong Kong

Grid 1444

Angle	Group	Inverse-distance Sum	Roughness
0	0 - 30	5.176452751	0.001908
30	30 - 60	5.31768931	0.005137
60	60 - 90	5.176452751	0.239792
90	90 - 120	5.176452751	0.413769
120	120 - 150	5.31768931	0.321955
150	150 - 180	5.176452751	0.286788
180	180 - 210	5.176452751	0.238679
210	210 - 240	5.31768931	0.345300
240	240 - 270	5.176452751	0.022398
270	270 - 300	5.176452751	0.003808
300	300 - 330	5.31768931	0.002275
330	330 - 360	5.176452751	0.001751

Center: X=809655, Y=831355, Z=11.0; Met Year=2019;



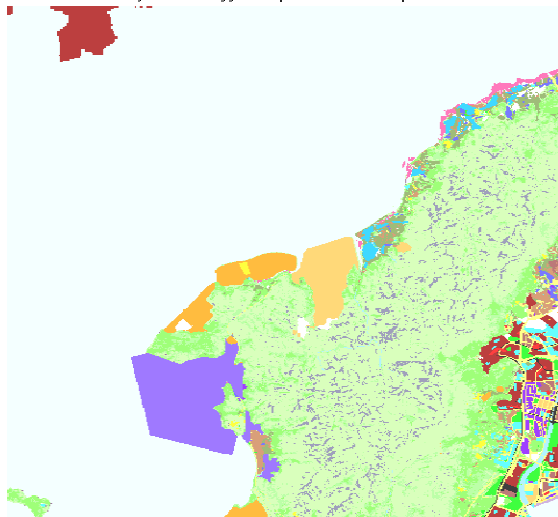
Custom Land Utilization in Hong Kong

Grid 1544

Code	Color Sample	Hong Kong Planning Department Classification	Roughness	Albedo	Bowen Ratio	Grid Count	Percent	Albedo x Perce	b^n/Sn
1		Private Residential	1	0.18	1.5	2152	0.22%	0.00038736	1.000872942
2		Public Residential	1	0.18	1.5	8969	0.90%	0.00161442	1.003643237
3		Rural Settlement	0.375	0.165	0.9	6347	0.63%	0.001047255	0.9993315
11		Commercial/Business and Office	1	0.18	1.5	738	0.07%	0.00013284	1.000299278
21		Industrial Land	0.7	0.18	1.5	2691	0.27%	0.00048438	1.001091702
22		Industrial Estates/Science and Technology Parks	0.7	0.18	1.5	30163	3.02%	0.00542934	1.012305137
23		Warehouse and Open Storage	0.7	0.18	1.5	2240	0.22%	0.0004032	1.000908654
31		Government, Institutional and Community Facilities	0.7	0.18	1.5	5632	0.56%	0.00101376	1.002286189
32		Open Space and Recreation	0.04	0.15	1	5089	0.51%	0.00076335	1
41		Roads and Transport Facilities	0.7	0.18	1.5	10943	1.09%	0.00196974	1.004446863
42		Railways	0.7	0.18	1.5	1704	0.17%	0.00030672	1.000691151
43		Airport	0.07	0.18	1.5	0	0.00%	0	1
44		Port Facilities	0.7	0.18	1.5	273	0.03%	0.00004914	1.000110698
51		Cemeteries/Funeral Facilities	0.7	0.18	1.5	1739	0.17%	0.00031302	1.000705352
52		Utilities	0.7	0.18	1.5	11447	1.14%	0.00206046	1.004652147
53		Vacant Land/Construction in Progress	0.2	0.18	1	4338	0.43%	0.00078084	1
54		Others	0.2	0.18	1	12748	1.27%	0.00229464	1
61		Agricultural Land	0.1575	0.18	0.55	9727	0.97%	0.00175086	0.994201715
62		Fish Ponds/Gei Wais	0.001	0.1	0.1	3846	0.38%	0.0003846	0.991183354
71		Woodland	1.05	0.1625	0.75	42825	4.28%	0.006959063	0.987755596
72		Shrubland	0.3	0.18	1.25	40087	4.01%	0.00721566	1.008985283
73		Grassland	0.065	0.185	0.8	207144	20.71%	0.03832164	0.954829157
74		Mangrove/Swamp	0.065	0.14	0.225	2597	0.26%	0.00036358	0.996133666
81		Badland	0.15	0.1625	0.75	19453	1.95%	0.003161113	0.994419351
83		Rocky Shore	0.05	0.2	4.75	153	0.02%	0.0000306	1.000238425
91		Reservoirs	0.001	0.1	0.1	0	0.00%	0	1
92		Streams and Nullahs	0.001	0.1	0.1	2322	0.23%	0.0002322	0.994667665
99		SZ Residential *	1	0.18	1.5	9220	0.92%	0.0016596	1.003745385
0		Open Sea *	0.001	0.1	0.1	555413	55.54%	0.0555413	0.278347292
			0.134671	0.266400	1000000				

* Outside Hong Kong border, not belong to PlanD categories.

Center: X=810406, Y=831435, Z=7.0; Met Year=2019;

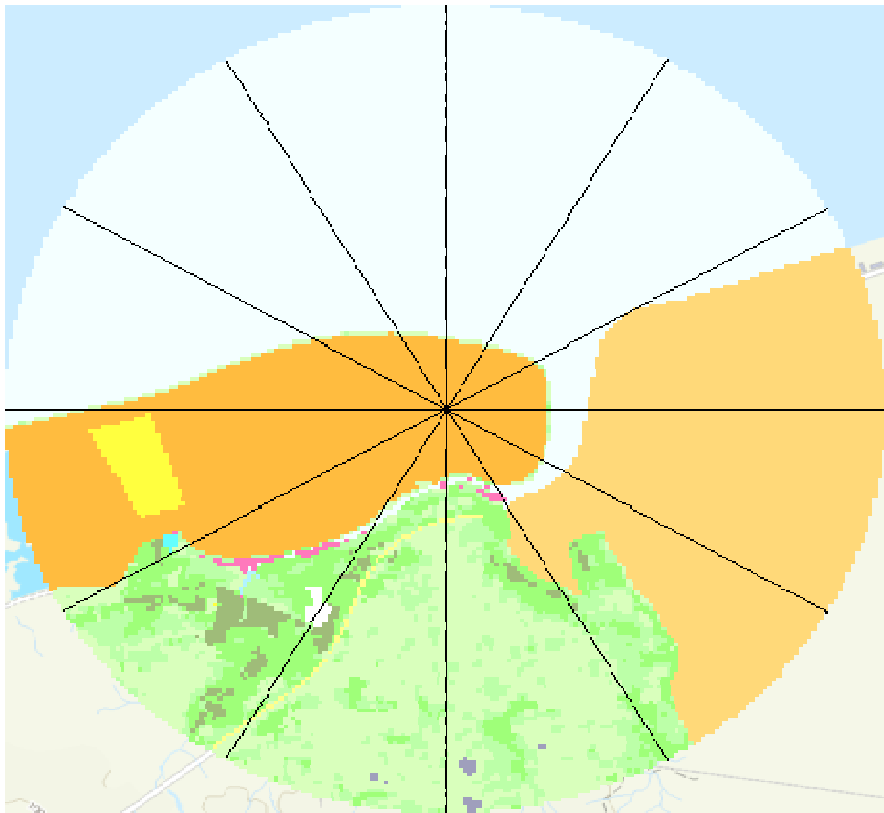


Custom Land Utilization in Hong Kong

Grid 1544

Angle	Group	Inverse-distance Sum	Roughness
0	0 - 30	5.176452751	0.002965
30	30 - 60	5.31768931	0.004195
60	60 - 90	5.176452751	0.098581
90	90 - 120	5.176452751	0.181601
120	120 - 150	5.31768931	0.252545
150	150 - 180	5.176452751	0.184505
180	180 - 210	5.176452751	0.190814
210	210 - 240	5.31768931	0.442365
240	240 - 270	5.176452751	0.646406
270	270 - 300	5.176452751	0.025859
300	300 - 330	5.31768931	0.006279
330	330 - 360	5.176452751	0.003316

Center: X=810405, Y=831435, Z=7.0; Met Year=2019;



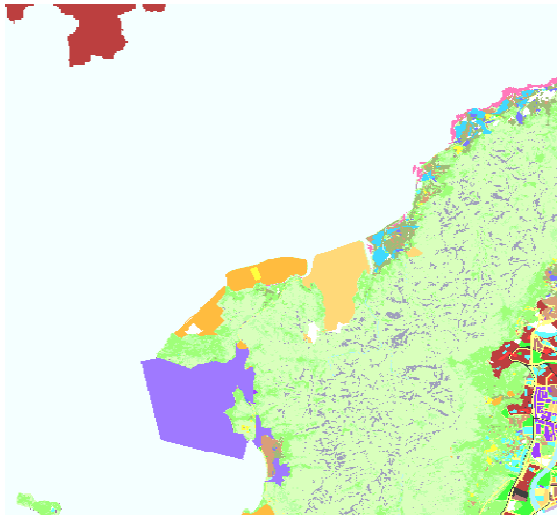
Custom Land Utilization in Hong Kong

Grid 1544

Code	Color Sample	Hong Kong Planning Department Classification	Roughness	Albedo	Bowen Ratio	Grid Count	Percent	Albedo x Perce	b^n/Sn
1		Private Residential	1	0.18	1.5	1211	0.12%	0.00021798	1.000491139
2		Public Residential	1	0.18	1.5	7090	0.71%	0.0012762	1.002878884
3		Rural Settlement	0.375	0.165	0.9	5491	0.55%	0.000906015	0.999421633
11		Commercial/Business and Office	1	0.18	1.5	710	0.07%	0.0001278	1.000287922
21		Industrial Land	0.7	0.18	1.5	2434	0.24%	0.00043812	1.000987389
22		Industrial Estates/Science and Technology Parks	0.7	0.18	1.5	30163	3.02%	0.00542934	1.012305137
23		Warehouse and Open Storage	0.7	0.18	1.5	1537	0.15%	0.00027666	1.000623394
31		Government, Institutional and Community Facilities	0.7	0.18	1.5	4048	0.40%	0.00072864	1.00164267
32		Open Space and Recreation	0.04	0.15	1	3563	0.36%	0.00053445	1
41		Roads and Transport Facilities	0.7	0.18	1.5	8594	0.86%	0.00154692	1.003490645
42		Railways	0.7	0.18	1.5	1216	0.12%	0.00021888	1.000493167
43		Airport	0.07	0.18	1.5	0	0.00%	0	1
44		Port Facilities	0.7	0.18	1.5	153	0.02%	0.00002754	1.000062038
51		Cemeteries/Funeral Facilities	0.7	0.18	1.5	1642	0.16%	0.00029556	1.000665995
52		Utilities	0.7	0.18	1.5	10446	1.04%	0.00188028	1.004244471
53		Vacant Land/Construction in Progress	0.2	0.18	1	3943	0.39%	0.00070974	1
54		Others	0.2	0.18	1	12679	1.27%	0.00228222	1
61		Agricultural Land	0.1575	0.18	0.55	9241	0.92%	0.00166338	0.994490621
62		Fish Ponds/Gei Wais	0.001	0.1	0.1	3846	0.38%	0.0003846	0.991183354
71		Woodland	1.05	0.1625	0.75	40211	4.02%	0.006534288	0.988498668
72		Shrubland	0.3	0.18	1.25	37625	3.76%	0.0067725	1.008431119
73		Grassland	0.065	0.185	0.8	20064	20.01%	0.03701184	0.956338842
74		Mangrove/Swamp	0.065	0.14	0.225	2447	0.24%	0.00034258	0.996356574
81		Badland	0.15	0.1625	0.75	19145	1.91%	0.003111063	0.994507466
83		Rocky Shore	0.05	0.2	4.75	143	0.01%	0.0000286	1.00022284
91		Reservoirs	0.001	0.1	0.1	0	0.00%	0	1
92		Streams and Nullahs	0.001	0.1	0.1	1986	0.20%	0.0001986	0.995437506
99		SZ Residential *	1	0.18	1.5	12457	1.25%	0.00224226	1.005063656
0		Open Sea *	0.001	0.1	0.1	577915	57.79%	0.0577915	0.264292598
			0.132978	0.253130	1000000				

* Outside Hong Kong border, not belong to PlanD categories.

Center: X=810186, Y=831666, Z=7.0; Met Year=2019;

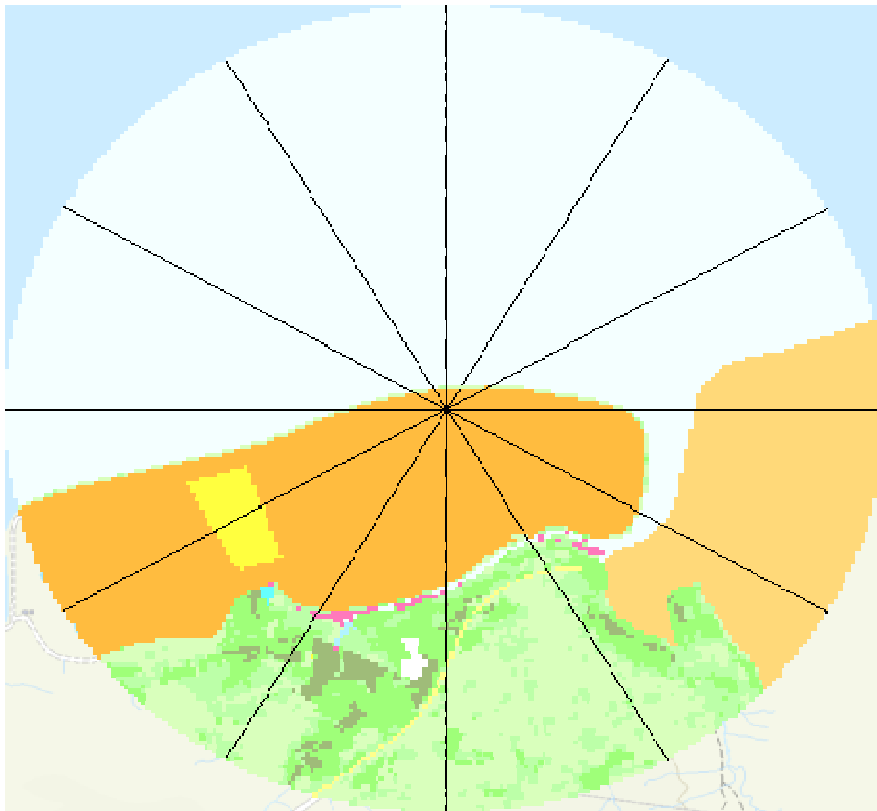


Custom Land Utilization in Hong Kong

Grid 1544

Angle	Group	Inverse-distance Sum	Roughness
0	0 - 30	5.176452751	0.001377
30	30 - 60	5.31768931	0.001882
60	60 - 90	5.176452751	0.008846
90	90 - 120	5.176452751	0.222911
120	120 - 150	5.31768931	0.329764
150	150 - 180	5.176452751	0.232339
180	180 - 210	5.176452751	0.416545
210	210 - 240	5.31768931	0.555190
240	240 - 270	5.176452751	0.106782
270	270 - 300	5.176452751	0.002287
300	300 - 330	5.31768931	0.001713
330	330 - 360	5.176452751	0.001366

Center: X=810185, Y=831565, Z= 7.0; Me: Year=2019;



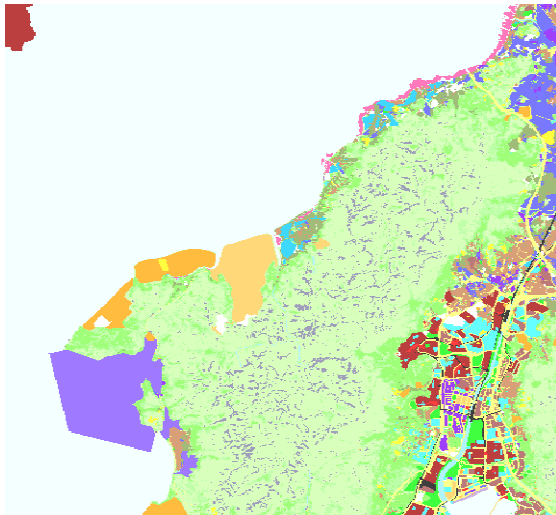
Custom Land Utilization in Hong Kong

Grid 1644

Code	Color Sample	Hong Kong Planning Department Classification	Roughness	Albedo	Bowen Ratio	Grid Count	Percent	Albedo x Perce	b^n/Sn
1		Private Residential	1	0.18	1.5	7691	0.77%	0.00138438	1.0031233
2		Public Residential	1	0.18	1.5	13993	1.40%	0.00251874	1.005689799
3		Rural Settlement	0.375	0.165	0.9	18167	1.82%	0.002997555	0.998087746
11		Commercial/Business and Office	1	0.18	1.5	1078	0.11%	0.00019404	1.000437187
21		Industrial Land	0.7	0.18	1.5	5311	0.53%	0.00095598	1.002155745
22		Industrial Estates/Science and Technology Parks	0.7	0.18	1.5	30163	3.02%	0.00542934	1.012305137
23		Warehouse and Open Storage	0.7	0.18	1.5	17036	1.70%	0.00306648	1.006931415
31		Government, Institutional and Community Facilities	0.7	0.18	1.5	10770	1.08%	0.0019386	1.004376408
32		Open Space and Recreation	0.04	0.15	1	7800	0.78%	0.00117	1
41		Roads and Transport Facilities	0.7	0.18	1.5	25289	2.53%	0.00455202	1.010306558
42		Railways	0.7	0.18	1.5	3434	0.34%	0.00061812	1.001393337
43		Airport	0.07	0.18	1.5	0	0.00%	0	1
44		Port Facilities	0.7	0.18	1.5	349	0.03%	0.00006282	1.000141517
51		Cemeteries/Funeral Facilities	0.7	0.18	1.5	3775	0.38%	0.0006795	1.001531803
52		Utilities	0.7	0.18	1.5	13172	1.32%	0.00237096	1.005355074
53		Vacant Land/Construction in Progress	0.2	0.18	1	6115	0.61%	0.0011007	1
54		Others	0.2	0.18	1	12924	1.29%	0.00232632	1
61		Agricultural Land	0.1575	0.18	0.55	15922	1.59%	0.00286596	0.990526399
62		Fish Ponds/Gei Wais	0.001	0.1	0.1	3978	0.40%	0.0003978	0.990882139
71		Woodland	1.05	0.1625	0.75	58068	5.81%	0.00943605	0.983433634
72		Shrubland	0.3	0.18	1.25	54165	5.42%	0.0097497	1.012159908
73		Grassland	0.065	0.185	0.8	234681	23.47%	0.043415985	0.948980003
74		Mangrove/Swamp	0.065	0.14	0.225	3851	0.39%	0.00053914	0.994272104
81		Badland	0.15	0.1625	0.75	19766	1.98%	0.003211975	0.994329813
83		Rocky Shore	0.05	0.2	4.75	106	0.01%	0.0000212	1.000165177
91		Reservoirs	0.001	0.1	0.1	0	0.00%	0	1
92		Streams and Nullahs	0.001	0.1	0.1	3250	0.33%	0.000325	0.992544529
99		SZ Residential *	1	0.18	1.5	4212	0.42%	0.00075816	1.001709278
0		Open Sea *	0.001	0.1	0.1	424934	42.49%	0.0424934	0.375894525
			0.144580	0.360768	1000000				

* Outside Hong Kong border, not belong to PlanD categories.

Center: X=811836, Y=831405, Z=4.0; Met Year=2019;

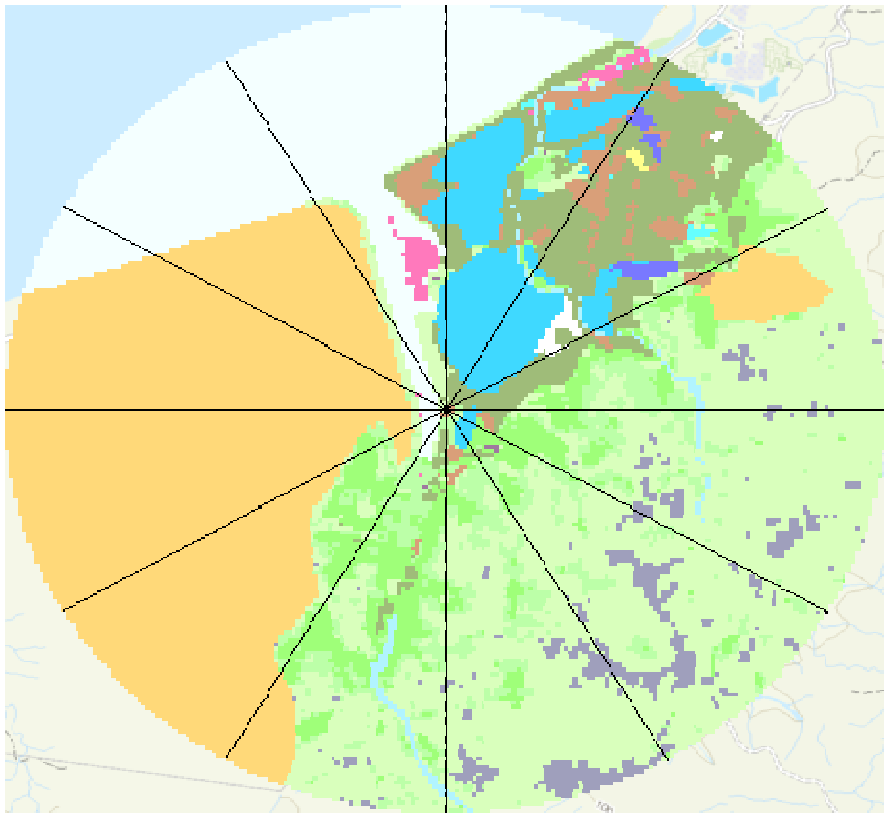


Custom Land Utilization in Hong Kong

Grid 1644

Angle	Group	Inverse-distance Sum	Roughness
0	0 - 30	5.176452751	0.006372
30	30 - 60	5.31768931	0.041709
60	60 - 90	5.176452751	0.134357
90	90 - 120	5.176452751	0.115152
120	120 - 150	5.31768931	0.102209
150	150 - 180	5.176452751	0.116402
180	180 - 210	5.176452751	0.185036
210	210 - 240	5.31768931	0.167017
240	240 - 270	5.176452751	0.157274
270	270 - 300	5.176452751	0.113177
300	300 - 330	5.31768931	0.018853
330	330 - 360	5.176452751	0.005128

Center: X=81° 835, Y=831405, Z=4.0; Met Year=20° 9;



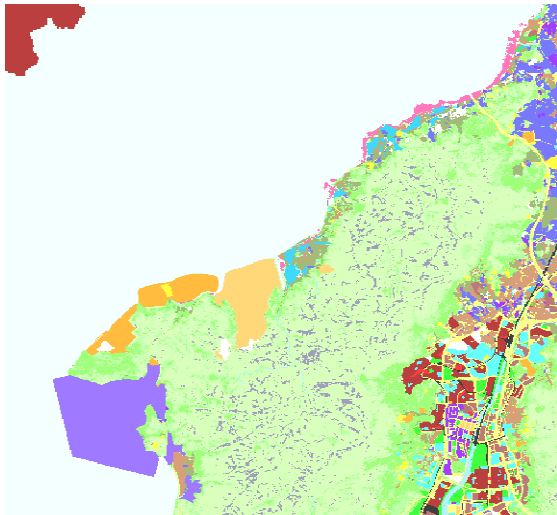
Custom Land Utilization in Hong Kong

Grid 1645

Code	Color Sample	Hong Kong Planning Department Classification	Roughness	Albedo	Bowen Ratio	Grid Count	Percent	Albedo x Perce	b^n/Sn
1		Private Residential	1	0.18	1.5	6384	0.64%	0.00114912	1.002591842
2		Public Residential	1	0.18	1.5	13154	1.32%	0.00236772	1.005347736
3		Rural Settlement	0.375	0.165	0.9	17725	1.77%	0.002924625	0.998134228
11		Commercial/Business and Office	1	0.18	1.5	959	0.10%	0.00017262	1.000388917
21		Industrial Land	0.7	0.18	1.5	5073	0.51%	0.00091314	1.002059041
22		Industrial Estates/Science and Technology Parks	0.7	0.18	1.5	30163	3.02%	0.00542934	1.012305137
23		Warehouse and Open Storage	0.7	0.18	1.5	16526	1.65%	0.00297468	1.006723216
31		Government, Institutional and Community Facilities	0.7	0.18	1.5	10361	1.04%	0.00186498	1.004209861
32		Open Space and Recreation	0.04	0.15	1	6685	0.67%	0.00100275	1
41		Roads and Transport Facilities	0.7	0.18	1.5	23122	2.31%	0.00416196	1.009419249
42		Railways	0.7	0.18	1.5	3250	0.33%	0.000585	1.00131863
43		Airport	0.07	0.18	1.5	0	0.00%	0	1
44		Port Facilities	0.7	0.18	1.5	55	0.01%	0.0000099	1.000022301
51		Cemeteries/Funeral Facilities	0.7	0.18	1.5	3668	0.37%	0.00066024	1.001488353
52		Utilities	0.7	0.18	1.5	11237	1.12%	0.00202266	1.004566607
53		Vacant Land/Construction in Progress	0.2	0.18	1	5794	0.58%	0.00104292	1
54		Others	0.2	0.18	1	12621	1.26%	0.00227178	1
61		Agricultural Land	0.1575	0.18	0.55	15428	1.54%	0.00277704	0.990818976
62		Fish Ponds/Gei Wais	0.001	0.1	0.1	3978	0.40%	0.0003978	0.990882139
71		Woodland	1.05	0.1625	0.75	53759	5.38%	0.008735838	0.984653476
72		Shrubland	0.3	0.18	1.25	50344	5.03%	0.00906192	1.011297277
73		Grassland	0.065	0.185	0.8	220020	22.00%	0.0407037	0.952089683
74		Mangrove/Swamp	0.065	0.14	0.225	3927	0.39%	0.00054978	0.994159394
81		Badland	0.15	0.1625	0.75	18862	1.89%	0.003065075	0.994588436
83		Rocky Shore	0.05	0.2	4.75	107	0.01%	0.0000214	1.000166735
91		Reservoirs	0.001	0.1	0.1	0	0.00%	0	1
92		Streams and Nullahs	0.001	0.1	0.1	2983	0.30%	0.0002983	0.993154924
99		SZ Residential *	1	0.18	1.5	11113	1.11%	0.00200034	1.004516101
0		Open Sea *	0.001	0.1	0.1	452702	45.27%	0.0452702	0.35261274
			0.142435	0.339872	1000000				

* Outside Hong Kong border, not belong to PlanD categories.

Center: X=811776, Y=831895, Z=5.0, Met Year=2019;

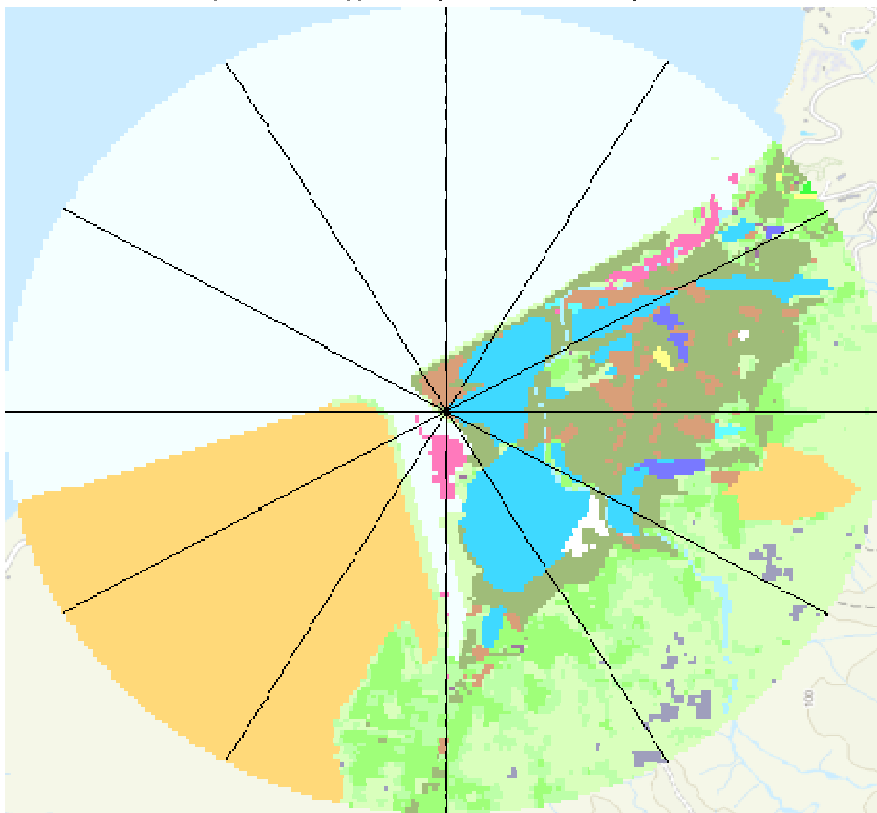


Custom Land Utilization in Hong Kong

Grid 1645

Angle	Group	Inverse-distance Sum	Roughness
0	0 - 30	5.176452751	0.002189
30	30 - 60	5.31768931	0.006603
60	60 - 90	5.176452751	0.043672
90	90 - 120	5.176452751	0.057034
120	120 - 150	5.31768931	0.034644
150	150 - 180	5.176452751	0.035555
180	180 - 210	5.176452751	0.078924
210	210 - 240	5.31768931	0.099731
240	240 - 270	5.176452751	0.037162
270	270 - 300	5.176452751	0.001359
300	300 - 330	5.31768931	0.001832
330	330 - 360	5.176452751	0.001954

Center: X=81775, Y=831895, Z=5.0; Met Year=2019;



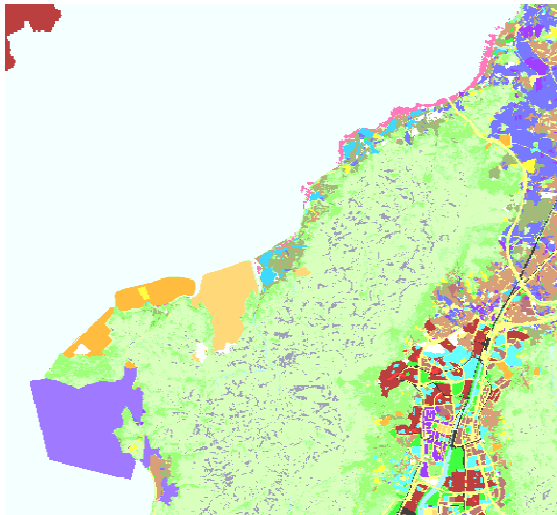
Custom Land Utilization in Hong Kong

Grid 1745

Code	Color Sample	Hong Kong Planning Department Classification	Roughness	Albedo	Bowen Ratio	Grid Count	Percent	Albedo x Perce	b^n/Sn
1		Private Residential	1	0.18	1.5	6173	0.62%	0.00111114	1.002506071
2		Public Residential	1	0.18	1.5	13053	1.31%	0.00234954	1.005306566
3		Rural Settlement	0.375	0.165	0.9	25424	2.54%	0.00419496	0.997324899
11		Commercial/Business and Office	1	0.18	1.5	922	0.09%	0.00016596	1.000373909
21		Industrial Land	0.7	0.18	1.5	6788	0.68%	0.00122184	1.002756088
22		Industrial Estates/Science and Technology Parks	0.7	0.18	1.5	30163	3.02%	0.00542934	1.012305137
23		Warehouse and Open Storage	0.7	0.18	1.5	24854	2.49%	0.00447372	1.010128378
31		Government, Institutional and Community Facilities	0.7	0.18	1.5	10506	1.05%	0.00189108	1.004268902
32		Open Space and Recreation	0.04	0.15	1	6646	0.66%	0.0009969	1
41		Roads and Transport Facilities	0.7	0.18	1.5	25101	2.51%	0.00451818	1.010229547
42		Railways	0.7	0.18	1.5	3379	0.34%	0.00060822	1.001371006
43		Airport	0.07	0.18	1.5	0	0.00%	0	1
44		Port Facilities	0.7	0.18	1.5	1	0.00%	0.00000018	1.000000405
51		Cemeteries/Funeral Facilities	0.7	0.18	1.5	4076	0.41%	0.00073368	1.001654042
52		Utilities	0.7	0.18	1.5	11336	1.13%	0.00204048	1.004606932
53		Vacant Land/Construction in Progress	0.2	0.18	1	6431	0.64%	0.00115758	1
54		Others	0.2	0.18	1	12800	1.28%	0.002304	1
61		Agricultural Land	0.1575	0.18	0.55	18326	1.83%	0.00329868	0.989103837
62		Fish Ponds/Gei Wais	0.001	0.1	0.1	3978	0.40%	0.0003978	0.990882139
71		Woodland	1.05	0.1625	0.75	55875	5.59%	0.009079688	0.984054265
72		Shrubland	0.3	0.18	1.25	53026	5.30%	0.00954468	1.01190269
73		Grassland	0.065	0.185	0.8	229163	22.92%	0.042395155	0.950149208
74		Mangrove/Swamp	0.065	0.14	0.225	3933	0.39%	0.00055062	0.994150497
81		Badland	0.15	0.1625	0.75	18917	1.89%	0.003074013	0.9945727
83		Rocky Shore	0.05	0.2	4.75	107	0.01%	0.0000214	1.000166735
91		Reservoirs	0.001	0.1	0.1	135	0.01%	0.0000135	0.999689199
92		Streams and Nullahs	0.001	0.1	0.1	3126	0.31%	0.0003126	0.992827962
99		SZ Residential *	1	0.18	1.5	5863	0.59%	0.00105534	1.00238007
0		Open Sea *	0.001	0.1	0.1	419898	41.99%	0.0419898	0.380278699
			0.144930	0.365675	1000000				

* Outside Hong Kong border, not belong to PlanD categories.

Center: X=812196, Y=831965, Z=5.0, Met Year=2019;



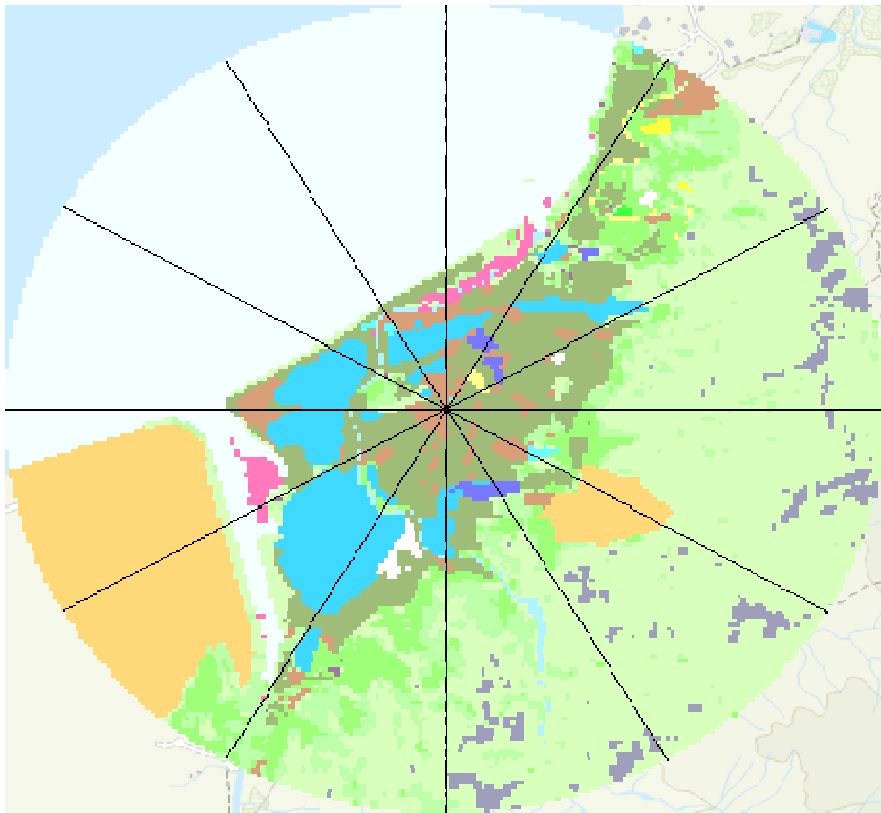
Custom Land Utilization in Hong Kong

v

Grid 1745

Angle	Group	Inverse-distance Sum	Roughness
0	0 - 30	5.176452751	0.011372
30	30 - 60	5.31768931	0.159817
60	60 - 90	5.176452751	0.111909
90	90 - 120	5.176452751	0.119458
120	120 - 150	5.31768931	0.130541
150	150 - 180	5.176452751	0.108426
180	180 - 210	5.176452751	0.102508
210	210 - 240	5.31768931	0.038497
240	240 - 270	5.176452751	0.036516
270	270 - 300	5.176452751	0.003844
300	300 - 330	5.31768931	0.003063
330	330 - 360	5.176452751	0.003118

Center: X=812195, Y=831955, Z=5.0; Met Year=2019;



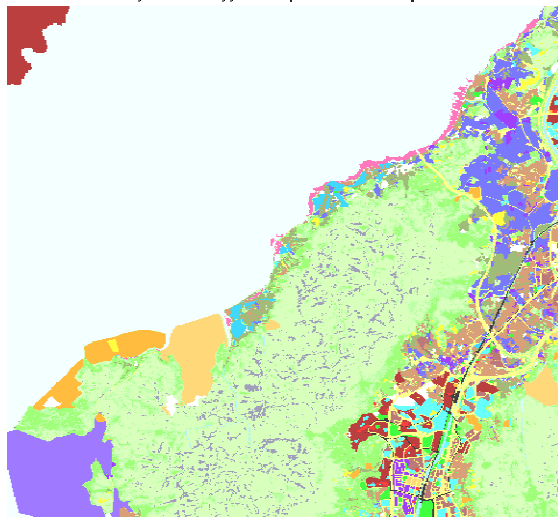
Custom Land Utilization in Hong Kong

Grid 1746

Code	Color Sample	Hong Kong Planning Department Classification	Roughness	Albedo	Bowen Ratio	Grid Count	Percent	Albedo x Perce	b^n/Sn
1		Private Residential	1	0.18	1.5	5776	0.58%	0.00103968	1.002344711
2		Public Residential	1	0.18	1.5	10456	1.05%	0.00188208	1.004248543
3		Rural Settlement	0.375	0.165	0.9	30771	3.08%	0.005077215	0.996763201
11		Commercial/Business and Office	1	0.18	1.5	956	0.10%	0.00017208	1.0003877
21		Industrial Land	0.7	0.18	1.5	7298	0.73%	0.00131364	1.002963467
22		Industrial Estates/Science and Technology Parks	0.7	0.18	1.5	26997	2.70%	0.00485946	1.011006472
23		Warehouse and Open Storage	0.7	0.18	1.5	31889	3.19%	0.00574002	1.013013829
31		Government, Institutional and Community Facilities	0.7	0.18	1.5	9578	0.96%	0.00172404	1.003891096
32		Open Space and Recreation	0.04	0.15	1	4899	0.49%	0.00073485	1
41		Roads and Transport Facilities	0.7	0.18	1.5	26719	2.67%	0.00480942	1.010892518
42		Railways	0.7	0.18	1.5	3005	0.30%	0.0005409	1.001219165
43		Airport	0.07	0.18	1.5	0	0.00%	0	1
44		Port Facilities	0.7	0.18	1.5	0	0.00%	0	1
51		Cemeteries/Funeral Facilities	0.7	0.18	1.5	4231	0.42%	0.00076158	1.001716995
52		Utilities	0.7	0.18	1.5	11406	1.14%	0.00205308	1.004635446
53		Vacant Land/Construction in Progress	0.2	0.18	1	6853	0.69%	0.00123354	1
54		Others	0.2	0.18	1	15763	1.58%	0.00283734	1
61		Agricultural Land	0.1575	0.18	0.55	20490	2.05%	0.0036882	0.987825042
62		Fish Ponds/Gei Wais	0.001	0.1	0.1	4001	0.40%	0.0004001	0.990829663
71		Woodland	1.05	0.1625	0.75	53177	5.32%	0.008641263	0.984818351
72		Shrubland	0.3	0.18	1.25	49380	4.94%	0.0088884	1.011079759
73		Grassland	0.065	0.185	0.8	210380	21.04%	0.0389203	0.954139931
74		Mangrove/Swamp	0.065	0.14	0.225	4428	0.44%	0.00061992	0.993416718
81		Badland	0.15	0.1625	0.75	16524	1.65%	0.00268515	0.995257622
83		Rocky Shore	0.05	0.2	4.75	129	0.01%	0.0000258	1.000201021
91		Reservoirs	0.001	0.1	0.1	136	0.01%	0.0000136	0.999686897
92		Streams and Nullahs	0.001	0.1	0.1	3589	0.36%	0.0003589	0.991770075
99		SZ Residential *	1	0.18	1.5	10042	1.00%	0.00180756	1.004079981
0		Open Sea *	0.001	0.1	0.1	431127	43.11%	0.0431127	0.37057234
			0.143941	0.357644		1000000			

* Outside Hong Kong border, not belong to PlanD categories.

Center: X=812776, Y=832945, Z=22.0; Met Year=2019;

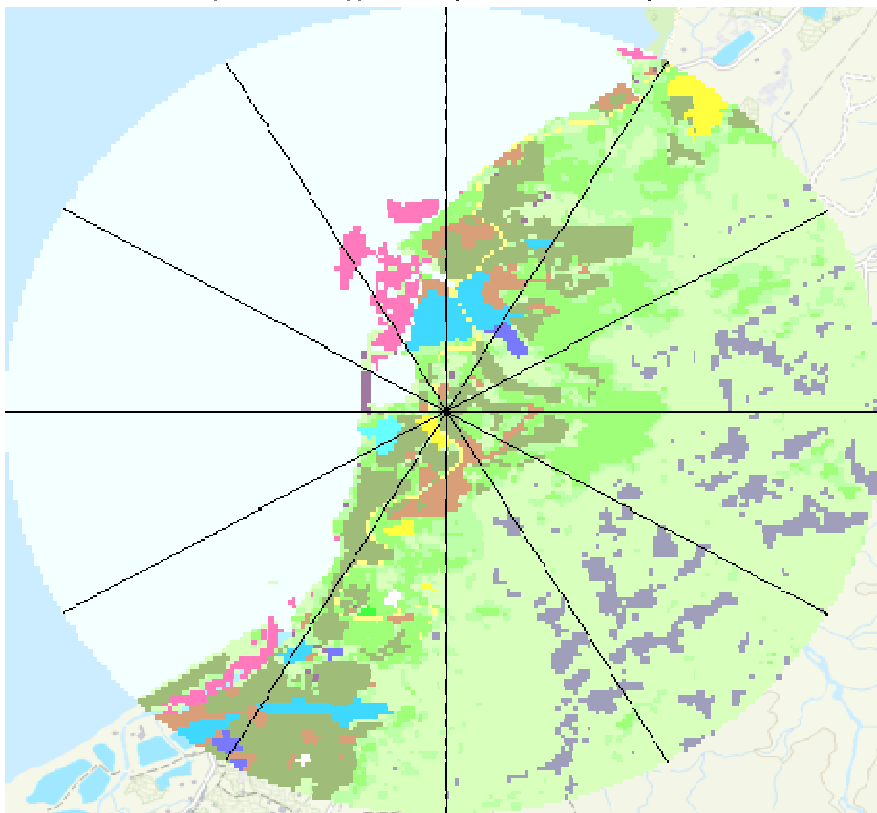


Custom Land Utilization in Hong Kong

Grid 1746

Angle	Group	Inverse-distance Sum	Roughness
0	0 - 30	5.176452751	0.028185
30	30 - 60	5.31768931	0.226817
60	60 - 90	5.176452751	0.153555
90	90 - 120	5.176452751	0.171858
120	120 - 150	5.31768931	0.112398
150	150 - 180	5.176452751	0.114556
180	180 - 210	5.176452751	0.212635
210	210 - 240	5.31768931	0.014243
240	240 - 270	5.176452751	0.003161
270	270 - 300	5.176452751	0.001941
300	300 - 330	5.31768931	0.002628
330	330 - 360	5.176452751	0.005973

Center: X=812775, Y=832945, Z=22.0; Met Year=2019;



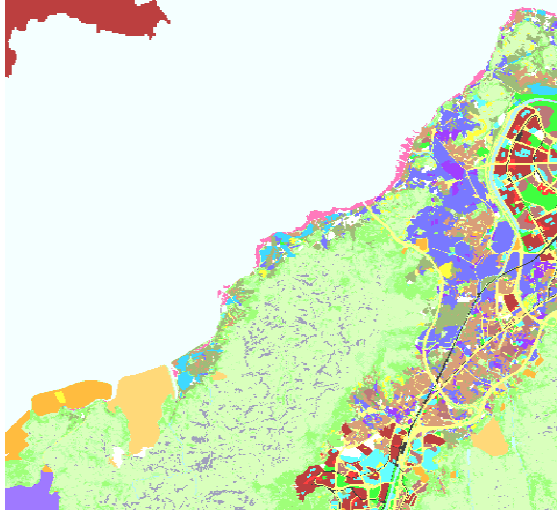
Custom Land Utilization in Hong Kong

Grid 1847

Code	Color Sample	Hong Kong Planning Department Classification	Roughness	Albedo	Bowen Ratio	Grid Count	Percent	Albedo x Perce	b^n/Sn
1		Private Residential	1	0.18	1.5	8603	0.86%	0.00154854	1.003494307
2		Public Residential	1	0.18	1.5	16485	1.65%	0.0029673	1.006706481
3		Rural Settlement	0.375	0.165	0.9	32340	3.23%	0.0053361	0.996598439
11		Commercial/Business and Office	1	0.18	1.5	1905	0.19%	0.0003429	1.000772709
21		Industrial Land	0.7	0.18	1.5	6905	0.69%	0.0012429	1.002803659
22		Industrial Estates/Science and Technology Parks	0.7	0.18	1.5	5085	0.51%	0.0009153	1.002063917
23		Warehouse and Open Storage	0.7	0.18	1.5	36642	3.66%	0.00659556	1.014967967
31		Government, Institutional and Community Facilities	0.7	0.18	1.5	10345	1.03%	0.0018621	1.004203346
32		Open Space and Recreation	0.04	0.15	1	8844	0.88%	0.0013266	1
41		Roads and Transport Facilities	0.7	0.18	1.5	31943	3.19%	0.00574974	1.013036009
42		Railways	0.7	0.18	1.5	3404	0.34%	0.00061272	1.001381156
43		Airport	0.07	0.18	1.5	0	0.00%	0	1
44		Port Facilities	0.7	0.18	1.5	0	0.00%	0	1
51		Cemeteries/Funeral Facilities	0.7	0.18	1.5	4263	0.43%	0.00076734	1.001729992
52		Utilities	0.7	0.18	1.5	10955	1.10%	0.0019719	1.00445175
53		Vacant Land/Construction in Progress	0.2	0.18	1	7591	0.76%	0.00136638	1
54		Others	0.2	0.18	1	15632	1.56%	0.00281376	1
61		Agricultural Land	0.1575	0.18	0.55	24787	2.48%	0.00446166	0.985290669
62		Fish Ponds/Gei Wais	0.001	0.1	0.1	5257	0.53%	0.0005257	0.987968277
71		Woodland	1.05	0.1625	0.75	45545	4.55%	0.007401063	0.986982984
72		Shrubland	0.3	0.18	1.25	45898	4.59%	0.00826164	1.01029447
73		Grassland	0.065	0.185	0.8	183533	18.35%	0.033953605	0.959873086
74		Mangrove/Swamp	0.065	0.14	0.225	5033	0.50%	0.00070462	0.992520612
81		Badland	0.15	0.1625	0.75	12796	1.28%	0.00207935	0.996325587
83		Rocky Shore	0.05	0.2	4.75	131	0.01%	0.0000262	1.000204138
91		Reservoirs	0.001	0.1	0.1	322	0.03%	0.0000322	0.999258842
92		Streams and Nullahs	0.001	0.1	0.1	4197	0.42%	0.0004197	0.990382596
99		SZ Residential *	1	0.18	1.5	16495	1.65%	0.0029691	1.006710563
0		Open Sea *	0.001	0.1	0.1	455064	45.51%	0.0455064	0.350700189
			0.141760	0.339151	1000000				

* Outside Hong Kong border, not belong to PlanD categories.

Center: X=813695, Y=834085, Z=5.0, Met Year=2019;

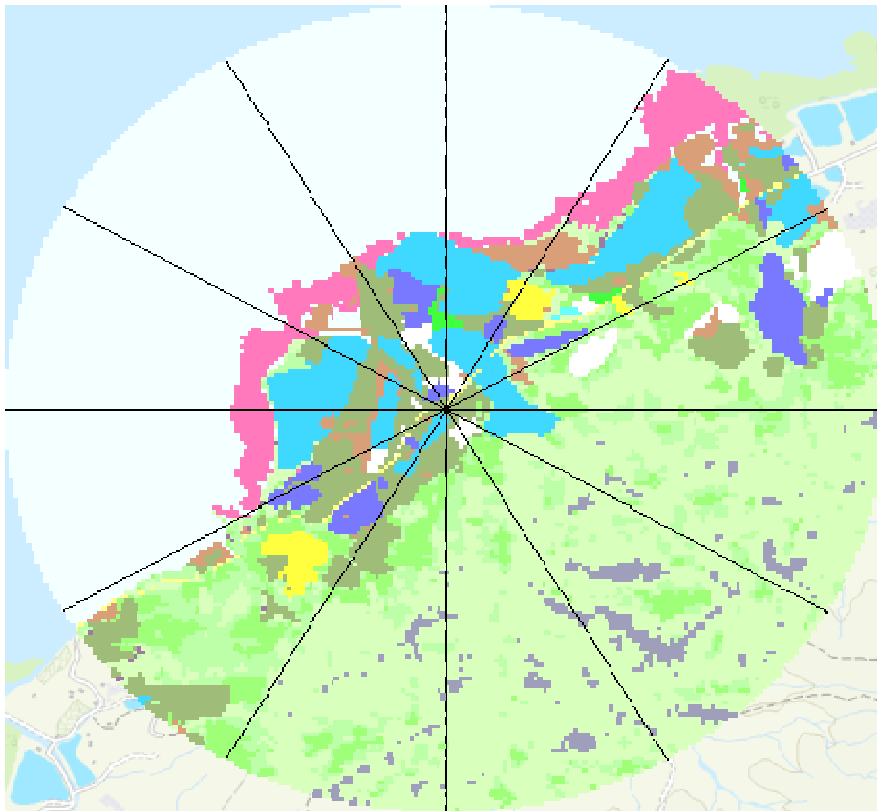


Custom Land Utilization in Hong Kong

Grid 1847

Angle	Group	Inverse-distance Sum	Roughness
0	0 - 30	5.176452751	0.003639
30	30 - 60	5.31768931	0.057632
60	60 - 90	5.176452751	0.137439
90	90 - 120	5.176452751	0.062072
120	120 - 150	5.31768931	0.118179
150	150 - 180	5.176452751	0.103785
180	180 - 210	5.176452751	0.098966
210	210 - 240	5.31768931	0.172767
240	240 - 270	5.176452751	0.006083
270	270 - 300	5.176452751	0.004049
300	300 - 330	5.31768931	0.005281
330	330 - 360	5.176452751	0.006163

Center: X=813695, Y=834085, Z=5.0; Met Year=2019;



Custom Land Utilization in Hong Kong