

DEEP BAY
后海灣

NIM WAN
稔灣

BLACK POINT
爛角咀

KEY PLAN 主圖
A3: 1:50,000

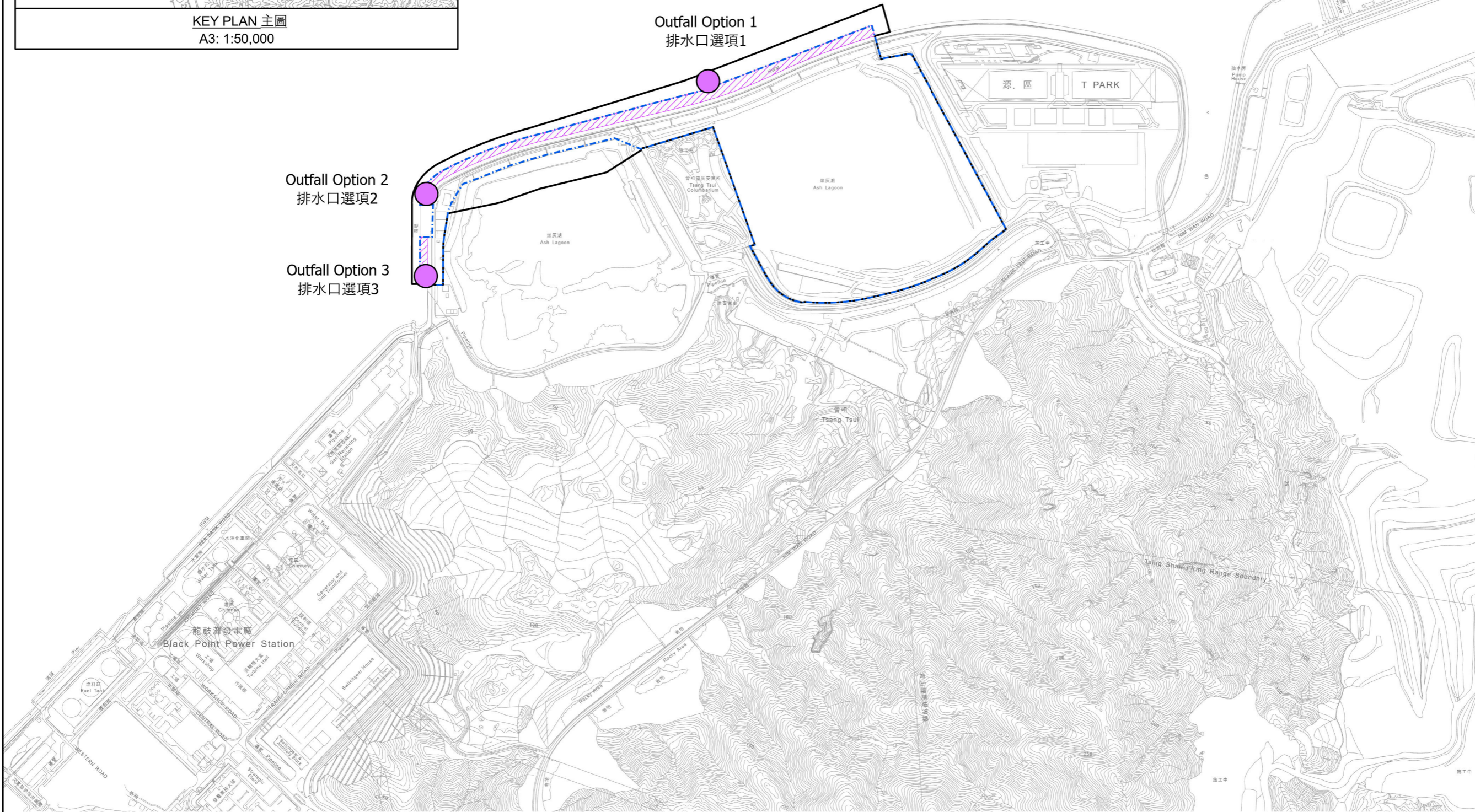
LEGEND 圖例

- I-PARK2 發展綜合廢物管理設施第二期
- PROPOSED SEAWALL MODIFICATION / BERTHING FACILITY
擬議海堤改造 / 停泊設施
- PROJECT BOUNDARY 項目範圍
- LOCATION OF PROPOSED OUTFALL 擬議排水口位置

Outfall Option 1
排水口選項1

Outfall Option 2
排水口選項2

Outfall Option 3
排水口選項3



Revision 修訂	Description 描述			
	Designed 設計	Reviewed 審核	Drawn 草繪	Checked 檢查
Initial 草繪	PSY	Amy	PSY	Amy
Date 日期	08/24	08/24	08/24	08/24

Approved 批核

Agreement No. 合約編號
CE 26/2022 (EP)

Project Title 工程項目名稱
Development of Integrated Waste Management Facilities Phase 2 - Investigation, Design and Construction
發展綜合廢物管理設施第二期 - 勘察、設計及建造

Figure Title 附圖名稱
Project Location Plan
工程項目位置圖

Drawing No. 草圖編號
Figure 圖 1.1

Scale 比例
A3: 1:8,000

Client 業主
Environmental Protection Department
The Government of the Hong Kong
Special Administrative Region

Consultant 顧問
binnies
BINNIES HONG KONG LIMITED
賓尼士工程顧問有限公司