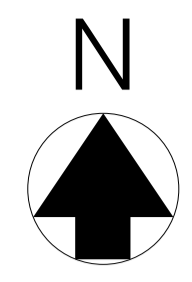
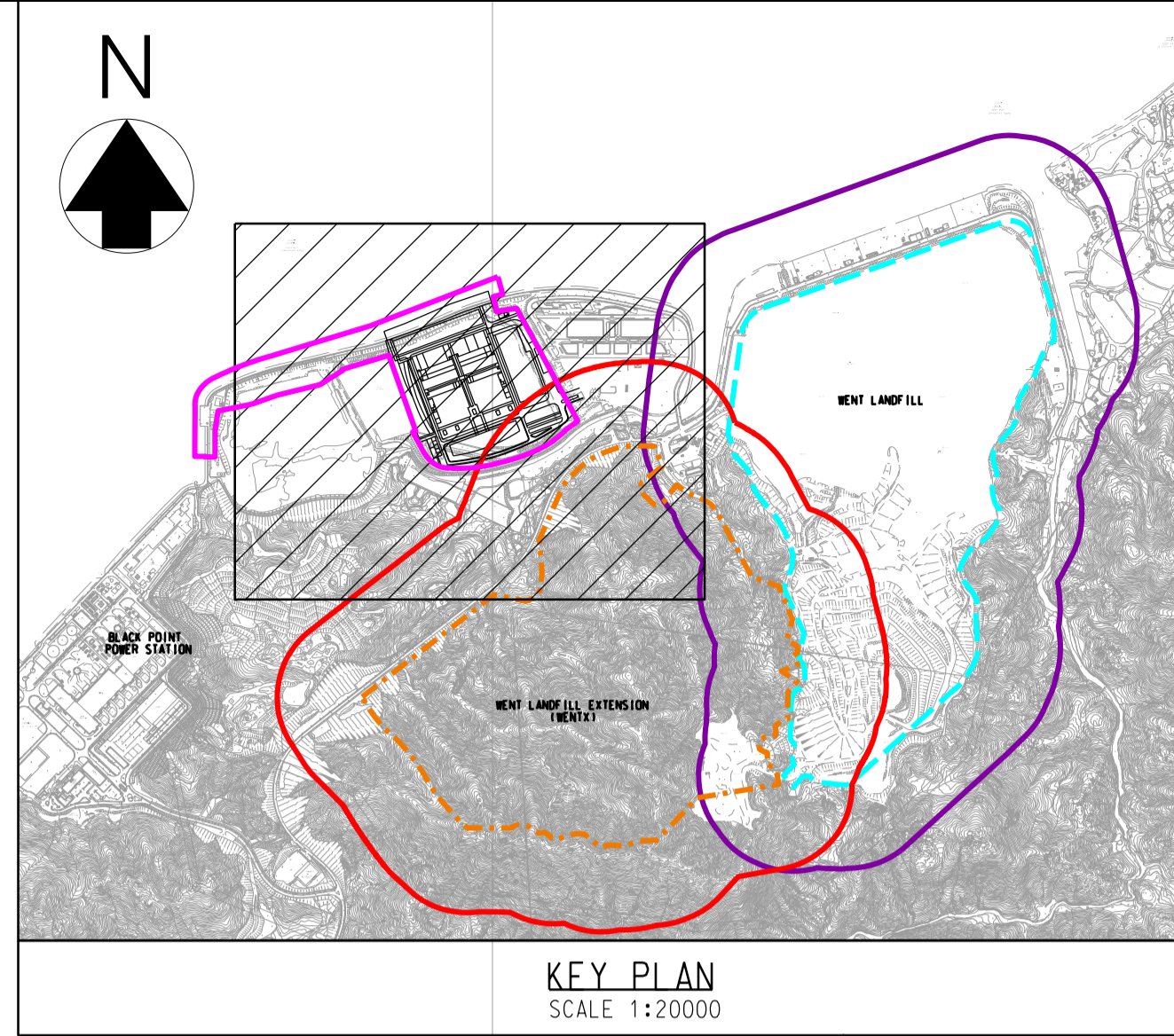


LEGEND:

- PROJECT BOUNDARY
- WENTX WASTE BOUNDARY
- WENT LANDFILL WASTE BOUNDARY
- LANDFILL GAS CONSULTATION ZONE OF WENTX
- LANDFILL GAS CONSULTATION ZONE OF WENT LANDFILL



809 500 E

810 000 E

后海湾  
(深圳湾)  
DEEP BAY  
(SHENZHEN WAN)

ELEVATED PLATFORM  
@+17.5mPD (WITH WATER  
RECYCLING PLANT  
UNDERNEATH)

NEW WHARF (ABOUT  
+6.5mPD)

831 500 N

T. PARK

EAST TSANG TSUI  
ASH LAAGOON

TSANG TSUI  
COLUMBARIUM

TIPPING HALL  
BUNKER

IBA TREATMENT FACILITY

MIDDLE TSANG  
TSUI ASH LAAGOON

GENERATOR

WEST TSANG TSUI  
ASH LAAGOON

GENERATOR

ADMIN. BUILDING

831 000 N

曾咀  
TSANG TSUI

Revision	Date	Description			Initial
		Designed	Checked	Drawn	
Initial		VW	CSC	SZ	SHT
Date	06/23	06/23	06/23	06/23	06/23

Approved

Contract no.  
CE 26/2022 (EP)

Contract title  
DEVELOPMENT OF INTEGRATED WASTE  
MANAGEMENT FACILITIES PHASE 2 -  
INVESTIGATION, DESIGN AND  
CONSTRUCTION

Drawing title  
LANDFILL GAS CONSULTATION ZONE  
FOR WENTX AND WENT LANDFILL

Drawing no.  
FIGURE 11.1

Revision  
-

Scale  
A1 1 : 2000  
A3 1 : 4000



BINNIES HONG KONG LIMITED  
賓尼斯工程顧問有限公司