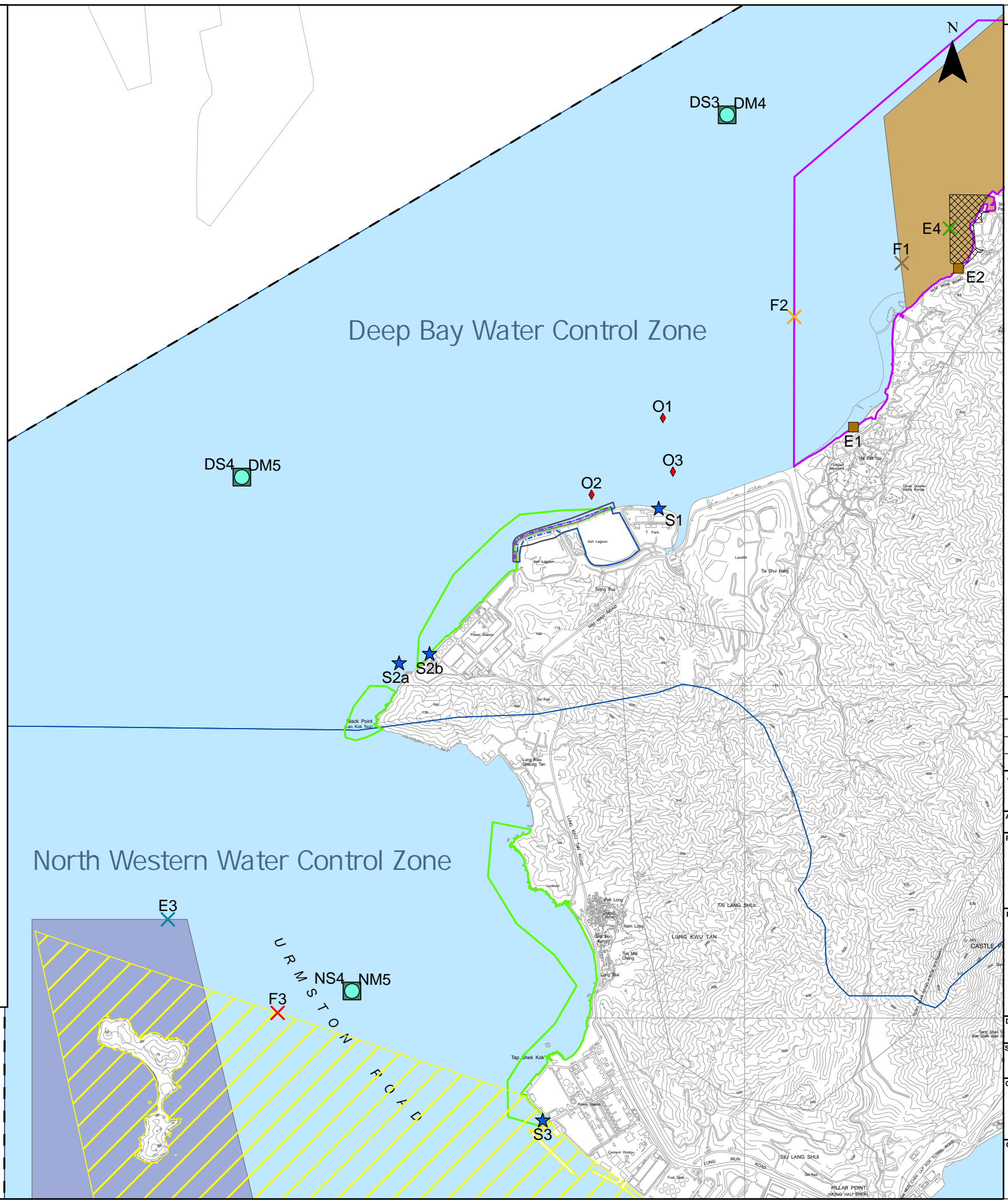


- Legend**
- I-PARK2
 - PROPOSED SEAWALL MODIFICATION / BERTHING FACILITY
 - PROJECT BOUNDARY
 - BOUNDARY OF WATER CONTROL ZONE
 - HKSAR BOUNDARY
 - EPD MARINE WATER QUALITY MONITORING STATION
 - EPD SEDIMENT QUALITY MONITORING STATION
 - MARINE WATER QUALITY IMPACT ASSESSMENT AREA
 - ★ SEAWATER INTAKE
 - S1 - T-PARK
 - S2a - BLACK POINT POWER STATION
 - S2b - BLACK POINT POWER STATION
 - S3 - CASTLE PEAK POWER STATION
 - MUDFLAT / SEAGRASS / HORSESHOE CRAB / MANGROVE
 - E1 - HA PAK NAI
 - E2 - SHEUNG PAK NAI
 - SHA CHAU AND LUNG KWU CHAU MARINE PARK
 - × E3 - INDICATOR POINT
 - PAK NAI SSSI
 - × E4 - INDICATOR POINT
 - TRADITIONAL OYSYTER PRODUCTION AREA
 - × F1 - INDICATOR POINT
 - MARICULTURE SUBZONE
 - × F2 - INDICATOR POINT
 - IMPORTANT SPAWNING GROUND OF COMMERCIAL FISHERIES RESOURCES
 - × F3 - INDICATOR POINT
 - SECONDARY CONTACT RECREATION SUBZONE
 - ◆ OBSERVATION POINTS FOR OYSYTER CULTURE ACTIVITIES
 - O1, O2 & O3 - OBSERVATION POINT



Revision	Description			
	Designed	Reviewed	Drawn	Checked
Initial	PSY	Amy	PSY	Amy
Date	08/24	08/24	08/24	08/24

Approved

Agreement No. CE 26/2022 (EP)

Project Title
Development of Integrated Waste Management Facilities Phase 2- Investigation, Design and Construction

Figure Title
Marine Water Sensitive Receivers and Observation Points

Drawing No. Figure 5.2 Revision -

Scale
A3: 1:39,000

Client
Environmental Protection Department
The Government of the Hong Kong
Special Administrative Region

Consultant
binnies
BINNIES HONG KONG LIMITED
賓尼士工程顧問有限公司