









Agreement No. CE 40/2023 (CE) - Development of Tseung Kwan O Area 137 and Associated Reclamation Sites - Investigation, Design and Construction

ID	Activity	Plant Inventory Index	2031												2032												2033												2034												2035												2036											
			Q1			Q2			Q3			Q4			Q1			Q2			Q3			Q4			Q1			Q2			Q3			Q4			Q1			Q2			Q3			Q4																										
			1	2	3	4	5	6	7	8	9	10	11	12	1	2	3	4	5	6	7	8	9	10	11	12	1	2	3	4	5	6	7	8	9	10	11	12	1	2	3	4	5	6	7	8	9	10	11	12	1	2	3	4	5	6	7	8	9	10	11	12	1	2	3	4	5	6	7	8	9	10	11	12
<b>Site Formation and Site Development of Service Reservoirs</b>																																																																										
<b>Site Formation Works for Service Reservoirs</b>																																																																										
70	Site Establishment & Preparation & GI Works	F																																																																								
Site Formation Works																																																																										
71	Haul Road Construction	H																																																																								
72	Excavation, Site Formation, Slope Improvement Works including Natural Hazard Mitigation Measures	F																																																																								
<b>Construction of Service Reservoirs Superstructure</b>																																																																										
74	Procurement & Preparation & SI & TTA	H																																																																								
75	Trunk Main & Primary Distribution (landslide & hillside)	H																																																																								
Construction of Fresh Water Service Reservoirs at OU5																																																																										
76	Foundation and Superstructure for FWSR	H																																																																								
77	Water Tightness Test and Associated Testing	H																																																																								
78	Pipeworks, Valves, E&M Installation and T&C for FWSR	H																																																																								
79	FWSR, TKM, DIS Testing and Commissioning	H	█																																																																							
Construction of Salt Water Service Reservoirs at OU6																																																																										
81	Foundation and Superstructure for SWSR	H																																																																								
82	Water Tightness Test and Associated Testing	H																																																																								
83	Pipeworks, Valves, E&M Installation and T&C for SWSR	H																																																																								
84	SWSR, TKM, DIS, SWPS Testing and Commissioning	H																																																																								
85	Architectural & Landscape Works for SRs	H	█																																																																							
<b>Temporary Public Transport Facility (PTF)</b>																																																																										
91	Construction of Temporary PTF at G3 including associated noise barrier	G																																																																								
92	Construction of Temporary PTF at O5 including associated noise barrier	G	█																																																																							
93	Demolition of Temporary PTF at G3 including associated noise barrier	G																																																																								
94	Demolition of Temporary PTF at O5 including associated noise barrier	G																																																																								
<b>Site Development of Effluent Polishing Plant at OU4</b>																																																																										
100	Advanced SPS ELS & Foundation (Phase 0)	J																																																																								
101	Advanced SPS Superstructure (Phase 0)	J																																																																								
102	Advanced SPS E&M Installation (Phase 0)	J																																																																								
103	Advanced SPS Architectural & Landscaping Works (Phase 0)	J																																																																								
104	Testing and Commissioning (Phase 0)	J																																																																								
100	ELS & Foundation (Phase 1)	J	█																																																																							
101	Superstructure (Phase 1)	J	█																																																																							
102	E&M Installation (Phase 1)	J	█																																																																							
103	Architectural & Landscaping Works (Phase 1)	J	█																																																																							
104	Testing and Commissioning (Phase 1)	J	█																																																																							
105	ELS & Foundation (Phase 2)	J	█																																																																							
106	Superstructure (Phase 2)	J	█																																																																							
107	E&M Installation (Phase 2)	J	█																																																																							
108	Architectural & Landscaping Works (Phase 2)	J	█																																																																							
109	Testing and Commissioning (Phase 2)	J	█																																																																							
<b>Site Development of Residential Developments, E, G and OU Sites</b>																																																																										
110	Site Development of PU1&PU2	K																																																																								
112	Site Development of PU3&PU4	K	█																																																																							
114	Site Development of PU5	K	█																																																																							
115	Site Development of PU6	K	█																																																																							
116	Site Development of PR1 including Permanent PTI/TIH (PR1)	K	█																																																																							
117	Site Development of PR2	K																																																																								
118	Site Development of PR3 including Permanent PTI/TIH (PR3)	K																																																																								
119	Site Development of PR5	K																																																																								
120	Site Development of PR4	K	█																																																																							
121	Site Development of E1	K	█																																																																							
122	Site Development of E2	K																																																																								
123	Site Development of E3	K	█																																																																							
124	Site Development of E4	K	█																																																																							
125	Site Development of E5	K	█																																																																							
126	Site Development of G1	K																																																																								
127	Site Development of G2	K	█																																																																							
128	Site Development of G3	K																																																																								
129	Site Development of G4	K	█																																																																							
130	Site Development of OU1	K																																																																								
131	Site Development of OU2	K	█																																																																							
132	Site Development of OU3	K	█																																																																							
<b>Construction of TKLSE Superstructure</b>																																																																										
133	Construction of TKLSE	K	█																																																																							





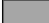
Agreement No. CE 40/2023 (CE) - Development of Tseung Kwan O Area 137 and Associated Reclamation Sites - Investigation, Design and Construction

ID	Activity	Plant Inventory Index	2037												2038												2039												2040												2041																				
			Q1			Q2			Q3			Q4			Q1			Q2			Q3			Q4			Q1			Q2			Q3			Q4			Q1			Q2			Q3			Q4																							
			1	2	3	4	5	6	7	8	9	10	11	12	1	2	3	4	5	6	7	8	9	10	11	12	1	2	3	4	5	6	7	8	9	10	11	12	1	2	3	4	5	6	7	8	9	10	11	12	1	2	3	4	5	6	7	8	9	10	11	12	1	2	3	4	5	6	7	8	9
<b>Site Formation and Site Development of Service Reservoirs</b>																																																																							
<b>Site Formation Works for Service Reservoirs</b>																																																																							
70	Site Establishment & Preparation & GI Works	F																																																																					
71	Haul Road Construction	H																																																																					
72	Excavation, Site Formation, Slope Improvement Works including Natural Hazard Mitigation Measures	F																																																																					
<b>Construction of Service Reservoirs Superstructure</b>																																																																							
74	Procurement & Preparation & SI & TTA	H																																																																					
75	Trunk Main & Primary Distribution (landslide & hillside)	H																																																																					
Construction of Fresh Water Service Reservoirs at OU5																																																																							
76	Foundation and Superstructure for FWSR	H																																																																					
77	Water Tightness Test and Associated Testing	H																																																																					
78	Pipeworks, Valves, E&M Installation and T&C for FWSR	H																																																																					
79	FWSR, TKM, DIS Testing and Commissioning	H																																																																					
Construction of Salt Water Service Reservoirs at OU6																																																																							
81	Foundation and Superstructure for SWSR	H																																																																					
82	Water Tightness Test and Associated Testing	H																																																																					
83	Pipeworks, Valves, E&M Installation and T&C for SWSR	H																																																																					
84	SWSR, TKM, DIS, SWPS Testing and Commissioning	H																																																																					
85	Architectural & Landscape Works for SRs	H																																																																					
<b>Temporary Public Transport Facility (PTF)</b>																																																																							
91	Construction of Temporary PTF at G3 including associated noise barrier	G																																																																					
92	Construction of Temporary PTF at O5 including associated noise barrier	G																																																																					
93	Demolition of Temporary PTF at G3 including associated noise barrier	G																																																																					
94	Demolition of Temporary PTF at O5 including associated noise barrier	G																																																																					
<b>Site Development of Effluent Polishing Plant at OU4</b>																																																																							
100	Advanced SPS ELS & Foundation (Phase 0)	J																																																																					
101	Advanced SPS Superstructure (Phase 0)	J																																																																					
102	Advanced SPS E&M Installation (Phase 0)	J																																																																					
103	Advanced SPS Architectural & Landscaping Works (Phase 0)	J																																																																					
104	Testing and Commissioning (Phase 0)	J																																																																					
ELS & Foundation (Phase 1)																																																																							
101	Superstructure (Phase 1)	J																																																																					
102	E&M Installation (Phase 1)	J																																																																					
103	Architectural & Landscaping Works (Phase 1)	J																																																																					
104	Testing and Commissioning (Phase 1)	J																																																																					
105	ELS & Foundation (Phase 2)	J																																																																					
106	Superstructure (Phase 2)	J																																																																					
107	E&M Installation (Phase 2)	J																																																																					
108	Architectural & Landscaping Works (Phase 2)	J																																																																					
109	Testing and Commissioning (Phase 2)	J																																																																					
<b>Site Development of Residential Developments, E, G and OU Sites</b>																																																																							
110	Site Development of PU1&PU2	K																																																																					
112	Site Development of PU3&PU4	K																																																																					
114	Site Development of PU5	K																																																																					
115	Site Development of PU6	K																																																																					
116	Site Development of PR1 including Permanent PTI/TIH (PR1)	K																																																																					
117	Site Development of PR2	K																																																																					
118	Site Development of PR3 including Permanent PTI/TIH (PR3)	K																																																																					
119	Site Development of PR5	K																																																																					
120	Site Development of PR4	K																																																																					
121	Site Development of E1	K																																																																					
122	Site Development of E2	K																																																																					
123	Site Development of E3	K																																																																					
124	Site Development of E4	K																																																																					
125	Site Development of E5	K																																																																					
126	Site Development of G1	K																																																																					
127	Site Development of G2	K																																																																					
128	Site Development of G3	K																																																																					
129	Site Development of G4	K																																																																					
130	Site Development of OU1	K																																																																					
131	Site Development of OU2	K																																																																					
132	Site Development of OU3	K																																																																					
<b>Construction of TKLSE Superstructure</b>																																																																							
133	Construction of TKLSE	K																																																																					

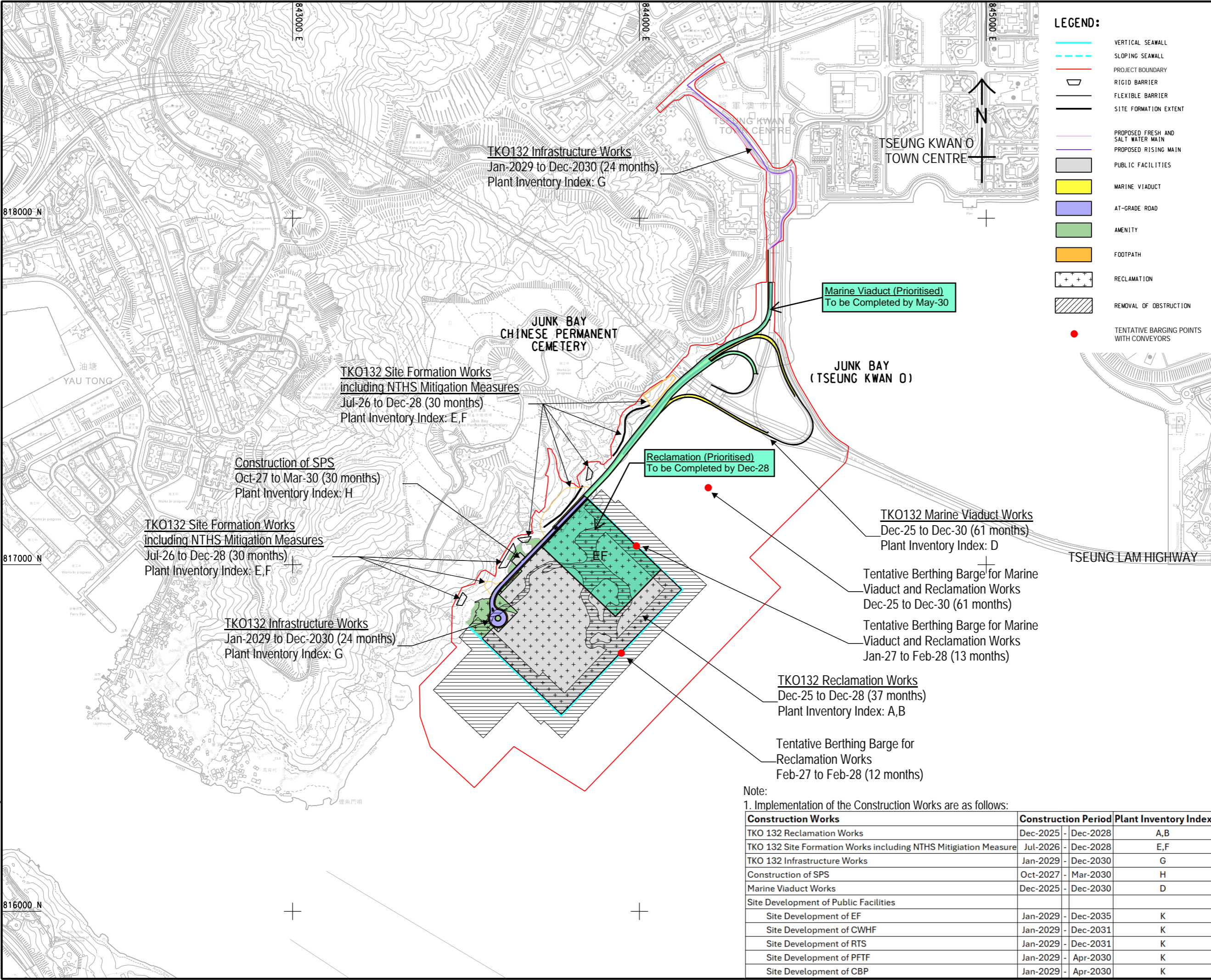


Agreement No. CE 40/2023 (CE) - Development of Tseung Kwan O Area 137 and Associated Reclamation Sites - Investigation, Design and Construction

ID	Activity	Plant Inventory Index	2037												2038												2039												2040												2041											
			Q1			Q2			Q3			Q4			Q1			Q2			Q3			Q4			Q1			Q2			Q3			Q4			Q1			Q2			Q3			Q4														
			1	2	3	4	5	6	7	8	9	10	11	12	1	2	3	4	5	6	7	8	9	10	11	12	1	2	3	4	5	6	7	8	9	10	11	12	1	2	3	4	5	6	7	8	9	10	11	12	1	2	3	4	5	6	7	8	9	10	11	12
<b>Construction Stage - TKO 132</b>																																																														
<b>TKO 132 Reclamation Works</b>																																																														
140	Design and Environmental Baseline Monitoring and DCM Site Trial	B																																																												
141	Installation of Silt Curtain	A																																																												
142	Removal of Obstructions/ MD	A																																																												
143	Installation of Sand Blanket (seawall & reclamation)	A																																																												
144	Installation of Sand Blanket (reclamation)	A																																																												
145	Carry Out Marine DCM for vertical seawall	B																																																												
146	Carry Out Marine DCM for sloping seawall	B																																																												
147	Construct Vertical Seawall	A																																																												
148	Installation of rockfill for vertical seawall	A																																																												
149	Construct Sloping Seawall	A																																																												
150	Carry Out Marine DCM for inland	B																																																												
151	Reclamation Filling to +3.0mPD from NE Workfront	A																																																												
152	Construct Remaining Seawall and Rockfill	A																																																												
153	Reclamation Filling to +3.0mPD (remaining)	A																																																												
154	Filling to Formation Level	A																																																												
155	Dredging for CBP Berthing Facility	A																																																												
<b>TKO 132 Site Formation Works</b>																																																														
156	Site Establishment and Clearance	E																																																												
157	Slope Improvement Works including Natural Hazard Mitigation Measures and Landscaping Works	F																																																												
<b>TKO 132 Infrastructure Works</b>																																																														
158	Infrastructure Works (Roadworks, Waterworks, Sewerage, Drainage, UU, E&M, Paving, Roadmarking, Street Furniture, Landscape)	G																																																												
<b>Construction of SPS</b>																																																														
160	Foundation and Superstructure	H																																																												
161	E&M Installation	H																																																												
162	Architectural & Landscaping Works	H																																																												
163	Testing and Commissioning	H																																																												
<b>Marine Viaduct Works</b>																																																														
164	Detailed Design	D																																																												
165	Temporary Piling Platform	D																																																												
166	Marine Bored Pile	D																																																												
167	Pile Cap	D																																																												
168	Marine Pier	D																																																												
169	Erection of Segments	D																																																												
169	Paving, Roadmarking, Street Furniture, E&M	D																																																												
<b>Site Development of Public Facilities</b>																																																														
170	Site Development of EF (OU1)	K																																																												
171	Site Development of CWHF (OU2)	K																																																												
172	Site Development of RTS (OU4)	K																																																												
173	Site Development of PFTF (OU3)	K																																																												
174	Site Development of CBP (OU6)	K																																																												

Legend:  
 Works under other study

ISO A1 594mm x 841mm  
 Approved:  
 Checked:  
 Designer:  
 Project Management Initials:  
 V:\BAK\US95-BAK\CSWP\p1\drwy\Create PH file\new\CSWP-75\color1.pft  
 Plot File by: xin.mao  
 PATH: P:\PROJECTS\672023\DRAWING\SKETCH\CHK1026.dgn  
 816000 N



**ISSUE/REVISION**

NO.	DATE	DESCRIPTION	CHK.

**STATUS**

NO.	DATE	DESCRIPTION	CHK.

**SCALE**      **DIMENSION UNIT**

A1 1 : 5000      METRES

**KEY PLAN**

**PROJECT NO.**      **CONTRACT NO.**

60720423      CE 40/2023(CE)

**SHEET TITLE**

GENERAL LAYOUT

**SHEET NUMBER**

60720423/SK1026

Note:

1. Implementation of the Construction Works are as follows:

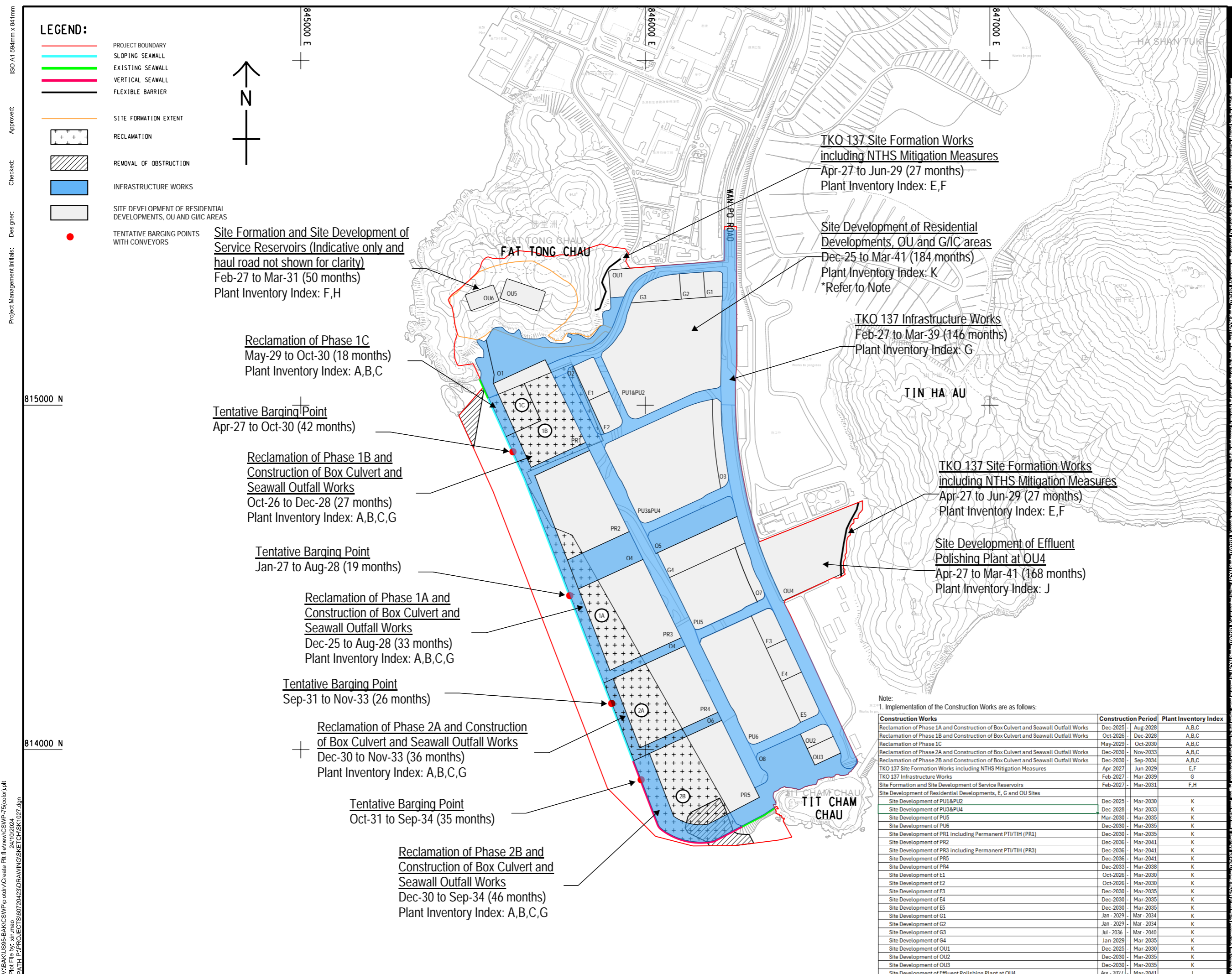
Construction Works	Construction Period	Plant Inventory Index
TKO 132 Reclamation Works	Dec-2025 - Dec-2028	A,B
TKO 132 Site Formation Works including NTHS Mitigation Measure	Jul-2026 - Dec-2028	E,F
TKO 132 Infrastructure Works	Jan-2029 - Dec-2030	G
Construction of SPS	Oct-2027 - Mar-2030	H
Marine Viaduct Works	Dec-2025 - Dec-2030	D
Site Development of Public Facilities		
Site Development of EF	Jan-2029 - Dec-2035	K
Site Development of CWHF	Jan-2029 - Dec-2031	K
Site Development of RTS	Jan-2029 - Dec-2031	K
Site Development of PFTF	Jan-2029 - Apr-2030	K
Site Development of CBP	Jan-2029 - Apr-2030	K

This drawing has been prepared for the use of AECOM Binnies (TKO137) JV or as required by the Client. It may not be used, modified, reproduced or relied upon by third parties, except as approved by AECOM Binnies (TKO137) JV or as required by the Client. AECOM Binnies (TKO137) JV accepts no responsibility, and denies any liability whatsoever, to any party, for any loss or damage of any kind, including consequential loss or damage, arising from the use of this drawing without AECOM Binnies (TKO137) JV's express written consent. Do not scale this document. All measurements must be obtained from the master dimension.

V:\BAKU\US55-BAK\CSWP\p1dtdrv\Create PH file\new\CSWP-75\color\p1  
 Plot File by: xin.mao 24/10/2024  
 PATH P:\PROJECTS\60720423\DRAWING\SKETCH\SK1027.dgn

**LEGEND:**

- PROJECT BOUNDARY
- SLOPING SEAWALL
- EXISTING SEAWALL
- VERTICAL SEAWALL
- FLEXIBLE BARRIER
- SITE FORMATION EXTENT
- RECLAMATION
- REMOVAL OF OBSTRUCTION
- INFRASTRUCTURE WORKS
- SITE DEVELOPMENT OF RESIDENTIAL DEVELOPMENTS, OU AND G/IC AREAS
- TENTATIVE BARGING POINTS WITH CONVEYORS



**Site Formation and Site Development of Service Reservoirs (Indicative only and haul road not shown for clarity)**  
 Feb-27 to Mar-31 (50 months)  
 Plant Inventory Index: F,H

**Reclamation of Phase 1C**  
 May-29 to Oct-30 (18 months)  
 Plant Inventory Index: A,B,C

**Tentative Barging Point**  
 Apr-27 to Oct-30 (42 months)

**Reclamation of Phase 1B and Construction of Box Culvert and Seawall Outfall Works**  
 Oct-26 to Dec-28 (27 months)  
 Plant Inventory Index: A,B,C,G

**Tentative Barging Point**  
 Jan-27 to Aug-28 (19 months)

**Reclamation of Phase 1A and Construction of Box Culvert and Seawall Outfall Works**  
 Dec-25 to Aug-28 (33 months)  
 Plant Inventory Index: A,B,C,G

**Tentative Barging Point**  
 Sep-31 to Nov-33 (26 months)

**Reclamation of Phase 2A and Construction of Box Culvert and Seawall Outfall Works**  
 Dec-30 to Nov-33 (36 months)  
 Plant Inventory Index: A,B,C,G

**Tentative Barging Point**  
 Oct-31 to Sep-34 (35 months)

**Reclamation of Phase 2B and Construction of Box Culvert and Seawall Outfall Works**  
 Dec-30 to Sep-34 (46 months)  
 Plant Inventory Index: A,B,C,G

**TKO 137 Site Formation Works including NTHS Mitigation Measures**  
 Apr-27 to Jun-29 (27 months)  
 Plant Inventory Index: E,F

**Site Development of Residential Developments, OU and G/IC areas**  
 Dec-25 to Mar-41 (184 months)  
 Plant Inventory Index: K  
 \*Refer to Note

**TKO 137 Infrastructure Works**  
 Feb-27 to Mar-39 (146 months)  
 Plant Inventory Index: G

**TKO 137 Site Formation Works including NTHS Mitigation Measures**  
 Apr-27 to Jun-29 (27 months)  
 Plant Inventory Index: E,F

**Site Development of Effluent Polishing Plant at OU4**  
 Apr-27 to Mar-41 (168 months)  
 Plant Inventory Index: J

Note:  
 1. Implementation of the Construction Works are as follows:

Construction Works	Construction Period	Plant Inventory Index
Reclamation of Phase 1A and Construction of Box Culvert and Seawall Outfall Works	Dec-2025 - Aug-2028	A,B,C
Reclamation of Phase 1B and Construction of Box Culvert and Seawall Outfall Works	Oct-2026 - Dec-2028	A,B,C
Reclamation of Phase 1C	May-2029 - Oct-2030	A,B,C
Reclamation of Phase 2A and Construction of Box Culvert and Seawall Outfall Works	Dec-2030 - Nov-2033	A,B,C
Reclamation of Phase 2B and Construction of Box Culvert and Seawall Outfall Works	Dec-2030 - Sep-2034	A,B,C
TKO 137 Site Formation Works including NTHS Mitigation Measures	Apr-2027 - Jun-2029	E,F
TKO 137 Infrastructure Works	Feb-2027 - Mar-2039	G
Site Formation and Site Development of Service Reservoirs	Feb-2027 - Mar-2031	F,H
Site Development of Residential Developments, E, G and OU Sites		
Site Development of PU1&PU2	Dec-2025 - Mar-2030	K
Site Development of PU3&PU4	Dec-2028 - Mar-2033	K
Site Development of PU5	Mar-2030 - Mar-2035	K
Site Development of PU6	Dec-2030 - Mar-2035	K
Site Development of PR1 including Permanent PTI/TIH (PR1)	Dec-2030 - Mar-2035	K
Site Development of PR2	Dec-2036 - Mar-2041	K
Site Development of PR3 including Permanent PTI/TIH (PR3)	Dec-2036 - Mar-2041	K
Site Development of PR5	Dec-2036 - Mar-2041	K
Site Development of PR4	Dec-2033 - Mar-2038	K
Site Development of E1	Oct-2026 - Mar-2030	K
Site Development of E2	Dec-2030 - Mar-2035	K
Site Development of E3	Dec-2030 - Mar-2035	K
Site Development of E4	Dec-2030 - Mar-2035	K
Site Development of E5	Dec-2030 - Mar-2035	K
Site Development of G1	Jan - 2029 - Mar - 2034	K
Site Development of G2	Jan - 2029 - Mar - 2034	K
Site Development of G3	Jul - 2036 - Mar - 2040	K
Site Development of G4	Jan-2029 - Mar-2035	K
Site Development of OU1	Dec-2025 - Mar-2030	K
Site Development of OU2	Dec-2030 - Mar-2035	K
Site Development of OU3	Dec-2030 - Mar-2035	K
Site Development of Effluent Polishing Plant at OU4	Apr - 2027 - Mar-2041	J

**ISSUE/REVISION**

NO.	DATE	DESCRIPTION	CHK.

**STATUS**

**SCALE**      **DIMENSION UNIT**  
 A1 1 : 5000      METRES

**KEY PLAN**

**PROJECT NO.**      **CONTRACT NO.**  
 60720423      CE 40/2023(CE)

**SHEET TITLE**  
 GENERAL LAYOUT

**SHEET NUMBER**  
 60720423/SK1027

This drawing has been prepared for the use of AECOM Binnies (TKO137) JV or as required by the Client. AECOM Binnies (TKO137) JV or as required by the Client, shall not be held responsible for any errors or omissions in this drawing without AECOM Binnies (TKO137) JV or as required by the Client's consent. Do not scale this document. All measurements must be obtained from the master dimension.