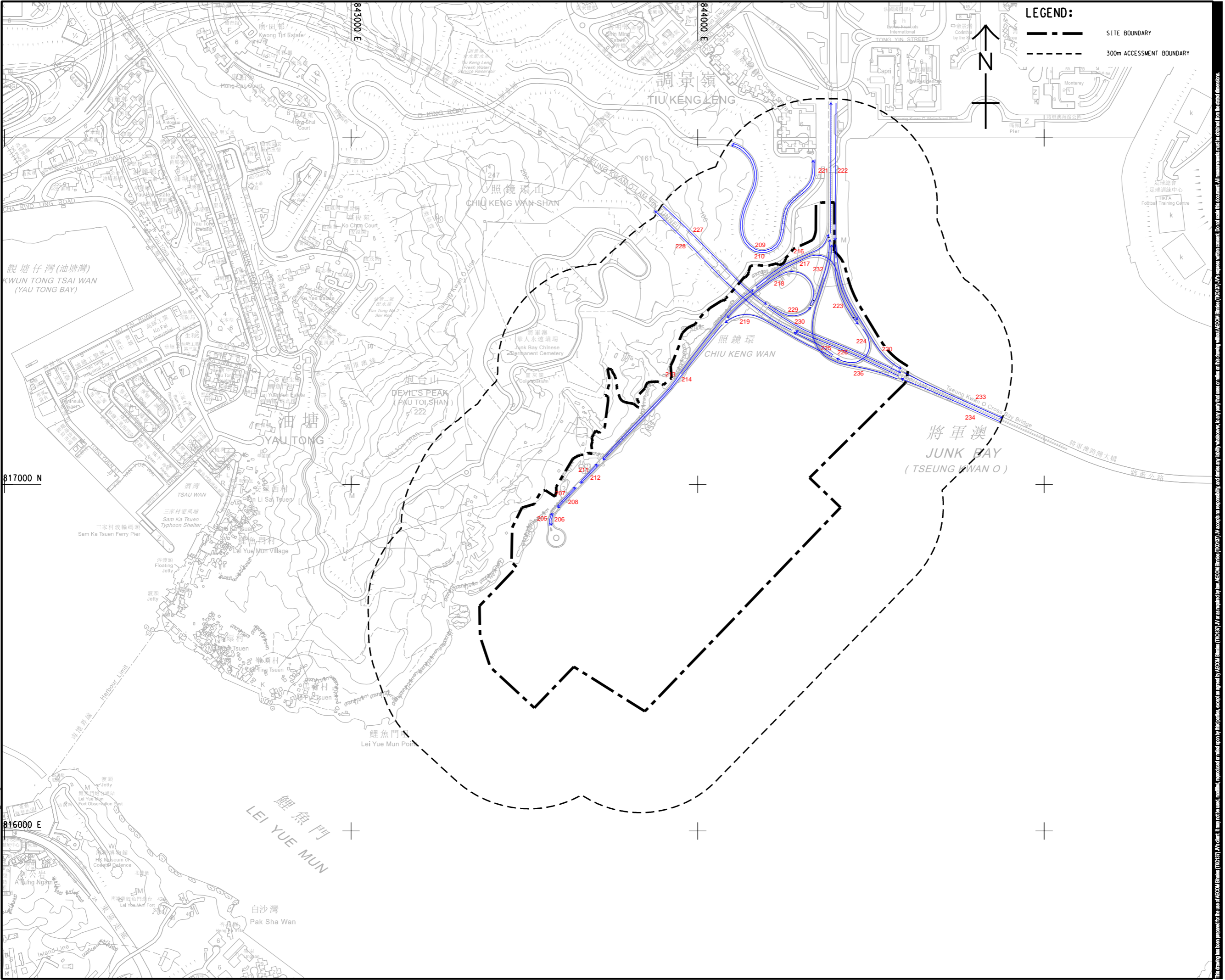


ISO A1 594mm x 841mm
 Approved:
 Checked:
 Designer:
 Project Management Initials:
 2024/5/14
 PATH P:\PROJECTS\2024\23\DRAWING\REPORT\UAT\TA_540.dgn
 Plot File by: LY1116104



LEGEND:
 - - - - - SITE BOUNDARY
 - - - - - 300m ACCESSMENT BOUNDARY

AECOM binnies

PROJECT
 DEVELOPMENT OF
 TSEUNG KWAN O AREA 132
 AND ASSOCIATED
 RECLAMATION SITES
 - INVESTIGATION,
 DESIGN AND CONSTRUCTION

CLIENT
 土木工程拓展署
CEDD Civil Engineering and
 Development Department

CONSULTANT
 AECOM Binnies (TKO137) JV

SUB-CONSULTANTS
 分判工程師公司

ISSUE/REVISION

I/R	DATE	DESCRIPTION	CHK.

STATUS
 訂正

SCALE
 A3 1 : 10000

DIMENSION UNIT
 METRES

KEY PLAN
 索引圖

PROJECT NO.
 60720423

CONTRACT NO.
 CE 40/2023(CE)

SHEET TITLE
 ROAD INDEX PLAN OF NOISE
 IMPACT ASSESSMENT (NIA) FOR
 YEAR 2041 ON TKO AREA 132

SHEET NUMBER
 Appendix 4.6

This drawing has been prepared for the use of AECOM Binnies (TKO137) JV or as required by the Client. It may not be used, modified, reproduced or relied upon by third parties, except as approved by AECOM Binnies (TKO137) JV or as required by the Client. AECOM Binnies (TKO137) JV or as required by the Client. All measurements must be obtained from the latest dimensions.

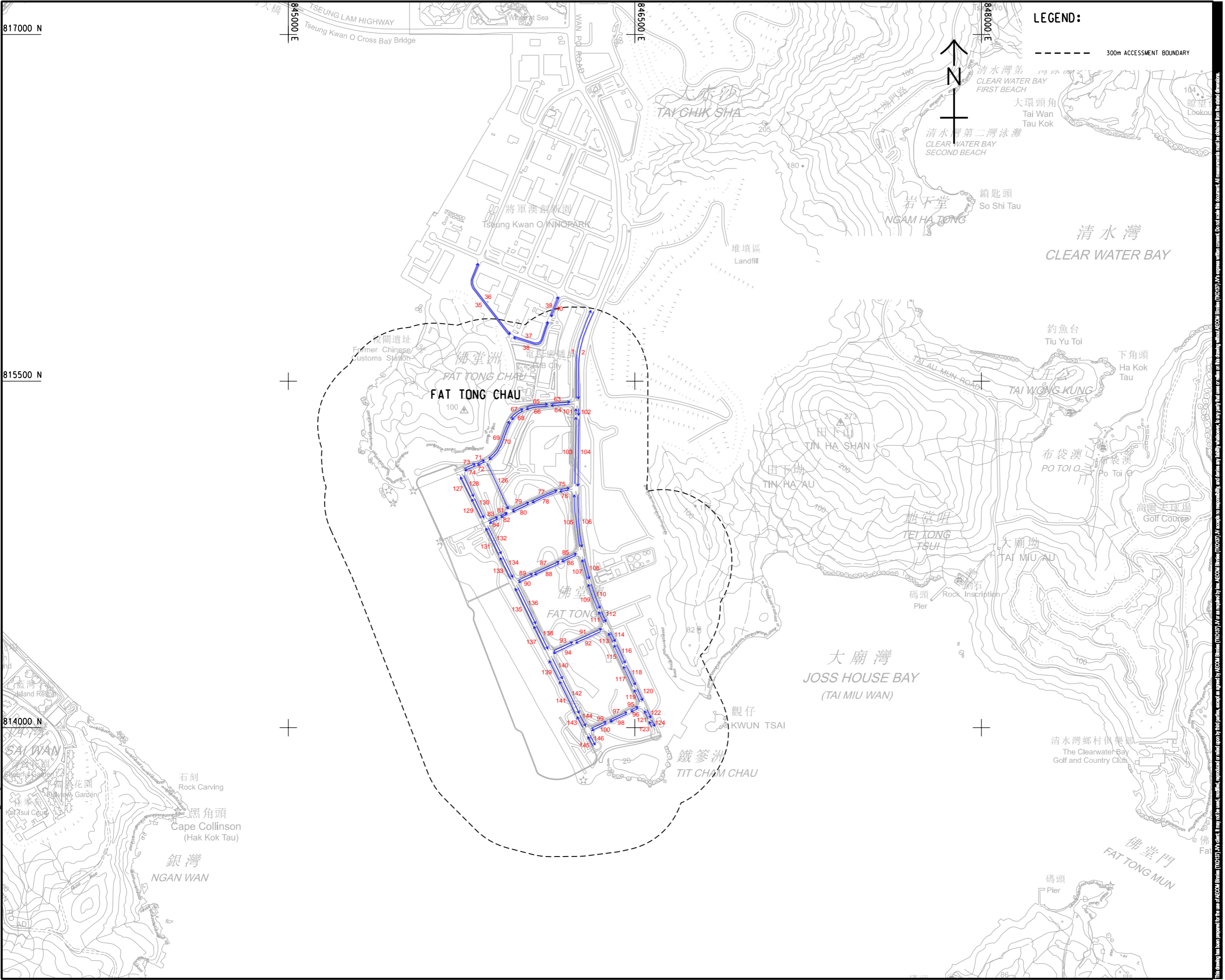
Appendix 4.6 Road Traffic Forecase Data in Year 2024 for TKO132

Link Index	Speed Limit (km/hr)	AM Peak Hourly Traffic Flow (Veh/hr)	HV%
205	50	0	0.0%
206	50	0	0.0%
207	50	0	0.0%
208	50	0	0.0%
209	50	23	5.4%
210	50	117	6.4%
211	50	0	0.0%
212	50	0	0.0%
213	50	0	0.0%
214	50	0	0.0%
216	50	0	0.0%
217	50	0	0.0%
218	50	0	0.0%
219	50	0	0.0%
220	50	79	20.3%
221	50	515	13.3%
222	50	902	13.0%
223	50	823	12.3%
224	50	823	12.3%
225	50	823	12.3%
226	80	876	22.4%
227	80	956	29.3%
228	80	1698	17.5%
229	50	359	10.1%
230	80	597	40.8%
232	50	359	10.1%
233	80	676	38.4%
234	80	1031	22.1%
236	50	156	20.5%

Appendix 4.6 Road Traffic Forecast Data in Year 2041

Link Index	Speed Limit (km/hr)	AM Peak Hourly Traffic Flow (veh/hr)	HV%
TKO 132 AREA			
205	50	117	100.0%
206	50	150	100.0%
207	50	215	100.0%
208	50	268	100.0%
209	50	23	5.4%
210	50	117	6.4%
211	50	311	100.0%
212	50	364	100.0%
213	50	313	100.0%
214	50	366	100.0%
216	50	170	100.0%
217	50	143	100.0%
218	50	307	100.0%
219	50	60	100.0%
220	50	298	35.5%
221	50	1119	26.3%
222	50	942	23.8%
223	50	644	18.4%
224	50	787	33.2%
225	50	727	27.7%
226	80	2623	8.6%
227	80	1856	26.9%
228	80	3349	12.7%
229	50	1047	34.2%
230	80	809	17.4%
232	50	740	6.9%
233	80	1107	22.3%
234	80	2832	10.5%
236	50	210	35.1%

ISO A1 594mm x 841mm
 Approved:
 Checked:
 Designer:
 Project Management Initials:
 2024/15/14
 PATH P:\PROJECTS\072023\DRAWING\REPORT\TIA\TIA_538.dgn



LEGEND:

----- 300m ACCESSMENT BOUNDARY

AECOM binnies

PROJECT
 項目
 DEVELOPMENT OF TSEUNG KWAN O AREA 137 AND ASSOCIATED RECLAMATION SITES – INVESTIGATION, DESIGN AND CONSTRUCTION

CLIENT
 業主
CEDD 土木工程拓展署
 Civil Engineering and Development Department

CONSULTANT
 顧問公司
 AECOM Binnies (TKO137) JV

SUB-CONSULTANTS
 分判工程師/公司

ISSUE/REVISION
 修訂

I/R	DATE	DESCRIPTION	CHK.

STATUS
 狀態

SCALE A3 1: 10000
DIMENSION UNIT METRES

KEY PLAN
 索引圖

PROJECT NO. 60720423
CONTRACT NO. CE 40/2023(CE)

SHEET TITLE
 圖紙名稱
 ROAD INDEX PLAN OF NOISE IMPACT ASSESSMENT (NIA) FOR YEAR 2041 ON TKO AREA 137

SHEET NUMBER
 圖紙編號
 Appendix 4.6

This drawing has been prepared for the use of AECOM Binnies (TKO137) JV and is not to be used, modified, reproduced or relied upon by third parties, except as approved by AECOM Binnies (TKO137) JV or as instructed by the client. AECOM Binnies (TKO137) JV or its employees, agents, subcontractors, consultants, suppliers, or any other parties, shall not be held responsible for any errors, omissions, or inaccuracies in this drawing. All measurements must be obtained from the latest dimensions.

Appendix 4.6 Road Traffic Forecast Data in Year 2041

Link Index	Speed Limit (km/hr)	AM Peak Hourly Traffic Flow (veh/hr)	HV%
TKO 137 AREA			
1	70	2337	15.0%
2	70	745	28.0%
35	50	8	79.7%
36	50	3	97.5%
37	50	3	97.5%
38	50	15	44.7%
39	50	75	22.3%
40	50	99	19.8%
63	50	659	12.3%
64	50	234	23.6%
65	50	656	11.9%
66	50	234	23.6%
67	50	578	8.8%
68	50	86	25.3%
69	50	578	8.8%
70	50	86	25.3%
71	50	578	8.8%
72	50	57	35.4%
73	50	607	8.7%
74	50	57	35.4%
75	50	463	10.9%
76	50	175	21.6%
77	50	225	14.3%
78	50	111	25.8%
79	50	219	11.9%
80	50	323	10.7%
81	50	194	12.7%
82	50	323	10.7%
83	50	194	12.7%
84	50	348	10.3%
85	50	417	8.8%
86	50	34	46.7%
87	50	251	8.8%
88	50	28	35.4%
89	50	113	10.4%
90	50	25	27.8%
91	50	296	19.5%

Appendix 4.6 Road Traffic Forecast Data in Year 2041

Link Index	Speed Limit (km/hr)	AM Peak Hourly Traffic Flow (veh/hr)	HV%
TKO 137 AREA			
92	50	30	69.1%
93	50	120	35.3%
94	50	24	61.3%
95	50	242	20.3%
96	50	40	88.5%
97	50	242	20.3%
98	50	43	89.3%
99	50	14	100.0%
100	50	13	64.3%
101	50	1654	16.3%
102	50	505	31.0%
103	50	1707	15.9%
104	50	502	30.5%
105	50	1239	17.9%
106	50	334	35.5%
107	50	822	22.5%
108	50	300	34.2%
109	50	778	21.6%
110	50	300	34.2%
111	50	778	21.6%
112	50	312	36.7%
113	50	482	22.9%
114	50	282	33.3%
115	50	482	22.9%
116	50	282	33.3%
117	50	482	22.9%
118	50	282	33.3%
119	50	487	22.7%
120	50	282	33.3%
121	50	240	25.5%
122	50	237	24.6%
123	50	242	24.2%
124	50	240	25.5%
126	50	29	5.4%
127	50	589	10.5%
128	50	89	58.7%
129	50	483	11.7%
130	50	89	58.7%
131	50	400	15.1%
132	50	135	49.0%
133	50	280	18.2%
134	50	130	50.6%
135	50	396	16.6%
136	50	160	45.6%
137	50	272	22.5%
138	50	168	48.2%
139	50	354	17.2%

Appendix 4.6 Road Traffic Forecast Data in Year 2041

Link Index	Speed Limit (km/hr)	AM Peak Hourly Traffic Flow (veh/hr)	HV%
TKO 137 AREA			
140	50	149	35.3%
141	50	259	20.4%
142	50	149	35.3%
143	50	145	30.3%
144	50	149	35.3%
145	50	135	28.6%
146	50	135	28.6%