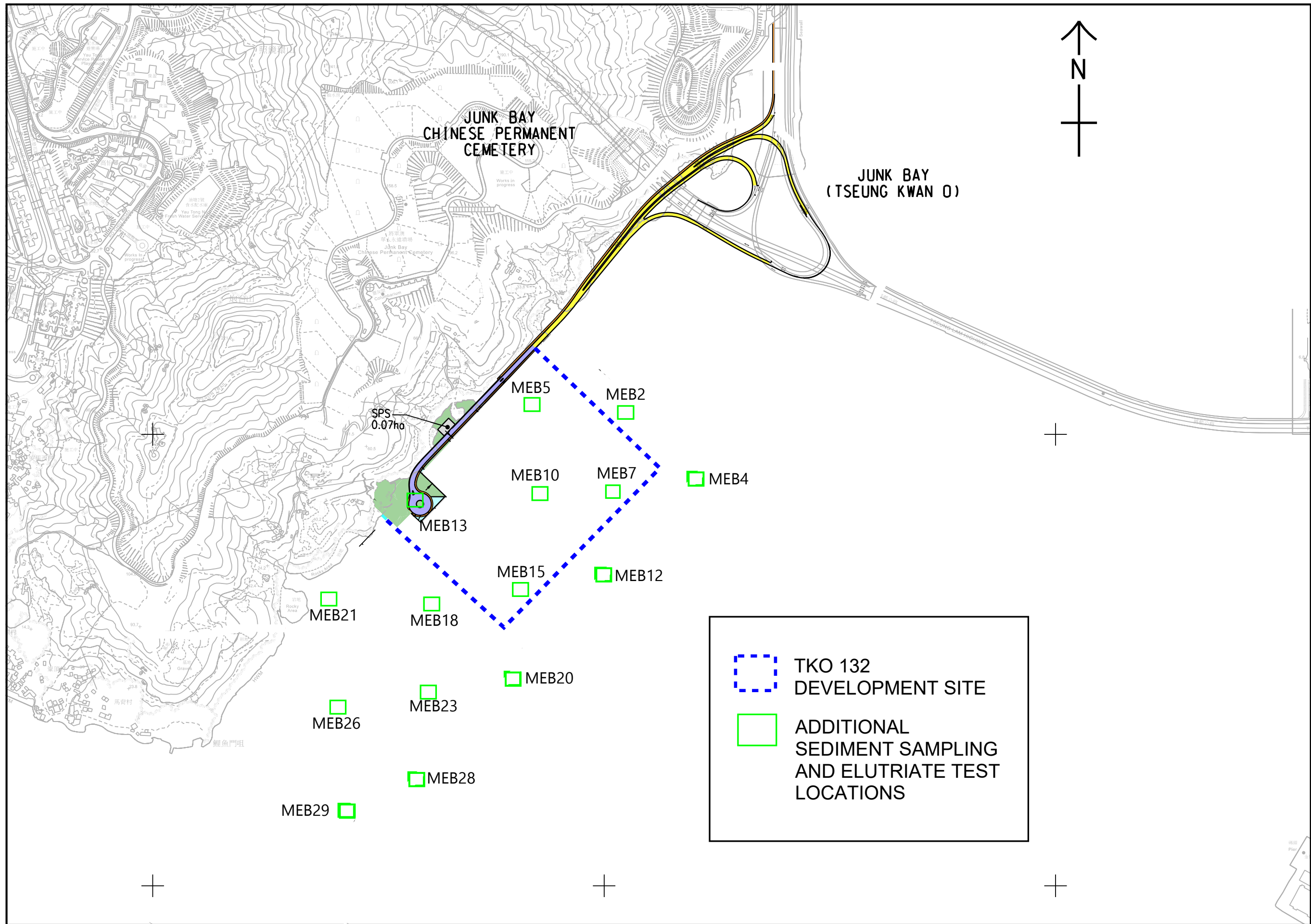


Appendix 5.10f

Sediment Quality Results for Nutrients and Sediment Oxygen Demand at TKO 132



Sediment Sampling Results for Nutrients and Sediment Oxygen Demand at TKO 132

Station ID	Sampling Depth	NH ₃ -N (mg/kg)	PO ₄ (mg/kg)	TKN (mg/kg)	TP (mg/kg)	NO ₃ -N (mg/kg)	NO ₂ -N (mg/kg)	SOD (mg/kg)
Sediment Sampling and Testing of this EIA								
MEB2	Surface	<10	<10.0	850	381	<0.1	<0.1	450
MEB4	Surface	<10	<10.0	1460	523	<0.1	<0.1	1160
MEB5	Surface	<10	<10.0	1180	346	<0.1	<0.1	460
	0.00-0.90m	<10	<10.0	70	72	<0.1	<0.1	50
	0.90-1.65m	<10	<10.0	160	143	<0.1	<0.1	190
MEB7	Surface	<10	<10.0	940	448	<0.1	<0.1	640
	0.00-0.90m	<10	<10.0	720	3620	<0.1	<0.1	520
	0.90m-1.90m	<10	<10.0	820	1740	<0.1	<0.1	570
MEB10	Surface	<10	<10.0	600	277	<0.1	<0.1	750
	0.00-0.90m	<10	<10.0	100	71	<0.1	<0.1	330
	0.90-1.30m	<10	<10.0	370	213	<0.1	<0.1	590
MEB12	Surface	<10	<10.0	1210	497	<0.1	<0.1	1040
MEB13	Surface	<10	<10.0	1090	447	<0.1	<0.1	820
MEB15	Surface	<10	<10.0	980	379	<0.1	<0.1	1350
MEB18	Surface	<10	<10.0	150	101	<0.1	<0.1	110
	0.25-0.90m	<10	<10.0	510	236	<0.1	<0.1	440
	0.90-1.90m	<10	<10.0	450	245	<0.1	<0.1	490
	1.90-2.90m	24	<10.0	1040	507	<0.1	<0.1	1010
	2.90-5.90m	<10	<10.0	170	57	<0.1	<0.1	240
MEB20	Surface	<10	<10.0	690	327	<0.1	<0.1	420
	0.20-0.90m	<10	<10.0	390	207	<0.1	<0.1	490
	0.90-1.90m	<10	<10.0	380	292	<0.1	<0.1	790
	1.90-2.90m	<10	<10.0	400	355	<0.1	<0.1	590
	2.90-5.90m	27	<10.0	770	374	<0.1	<0.1	760
MEB21	Surface	<10	<10.0	80	65	<0.1	<0.1	180
	0.10-0.90m	<10	<10.0	180	134	<0.1	<0.1	40
	0.90-1.90m	<10	<10.0	240	170	<0.1	<0.1	<10
	1.90-2.30m	<10	<10.0	100	102	<0.1	<0.1	<10
MEB23	Surface	<10	<10.0	860	396	<0.1	<0.1	680
	0.60-0.90m	<10	<10.0	170	327	<0.1	<0.1	450
	0.90-1.90m	<10	<10.0	480	261	<0.1	<0.1	570
	1.90-2.90m	<10	<10.0	360	89	<0.1	<0.1	140
	2.90-5.90m	10	<10.0	470	315	<0.1	<0.1	580
MEB26	Surface	<10	<10.0	200	142	<0.1	<0.1	560
	0.62-0.90m	<10	<10.0	250	169	<0.1	<0.1	830
	0.90-1.90m	12	<10.0	760	345	<0.1	<0.1	1130
	1.90-2.90m	<10	<10.0	490	259	<0.1	<0.1	750
	2.90-5.90m	18	<10.0	720	354	<0.1	<0.1	1060
MEB28	Surface	<10	<10.0	510	329	<0.1	<0.1	640
	0.20-0.90m	<10	<10.0	180	200	<0.1	<0.1	520
	0.90-1.90m	<10	<10.0	300	296	<0.1	<0.1	670
	1.90-2.90m	15	<10.0	480	384	<0.1	<0.1	910
	2.90-3.90m	18	<10.0	520	466	<0.1	<0.1	340
	3.90-4.90m	<10	<10.0	830	418	<0.1	<0.1	680
MEB29	Surface	<10	<10.0	1540	504	<0.1	<0.1	1440
	Surface	<10	<10.0	1540	504	<0.1	<0.1	1440
Sediment Quality Data Collected at EPD's Closest Monitoring Stations in 2023, See Note 1								
JS2 (Junk Bay)	Surface	4.93 (1.10 - 7.90)	-	520 (440 - 620)	190 (100- 230)	-	-	-

Notes:

- NH₃-N - Ammonia Nitrogen
- PO₄-P - Ortho-phosphate Phosphorus
- TKN - Total Kjeldahl Nitrogen
- TP - Total Phosphorus
- NO₃-N - Nitrate Nitrogen
- NO₂-N - Nitrite Nitrogen
- SOD - Sediment Oxygen Demand (SOD), 20 days

1. Source: Marine Water Quality in Hong Kong 2023; Data presented are arithmetic means; data in brackets indicate ranges.