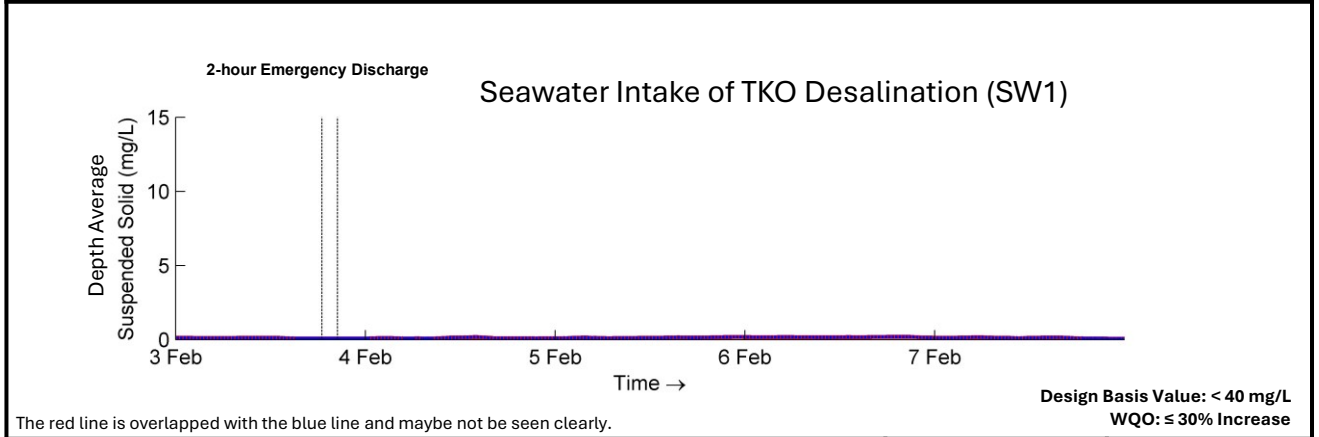
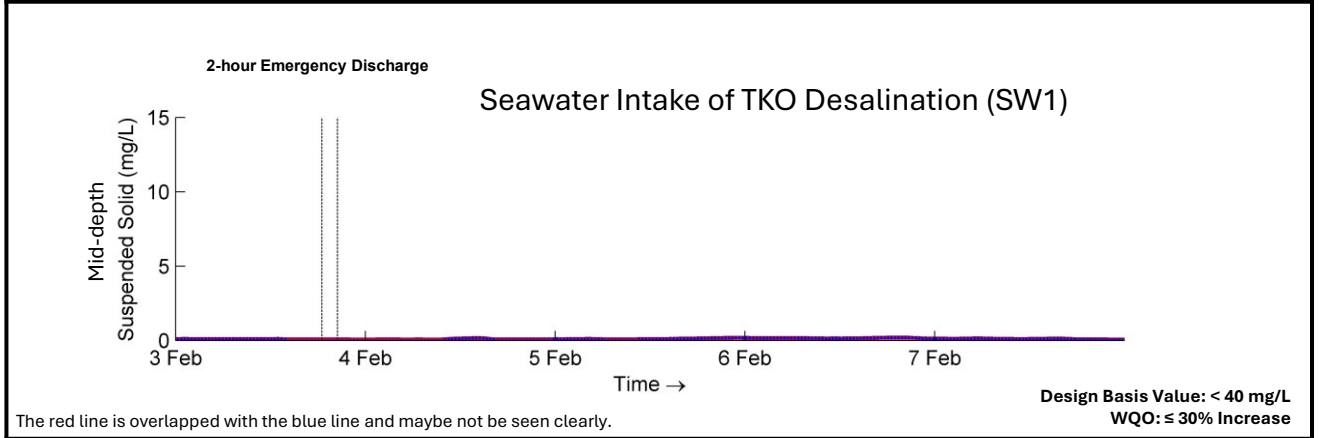
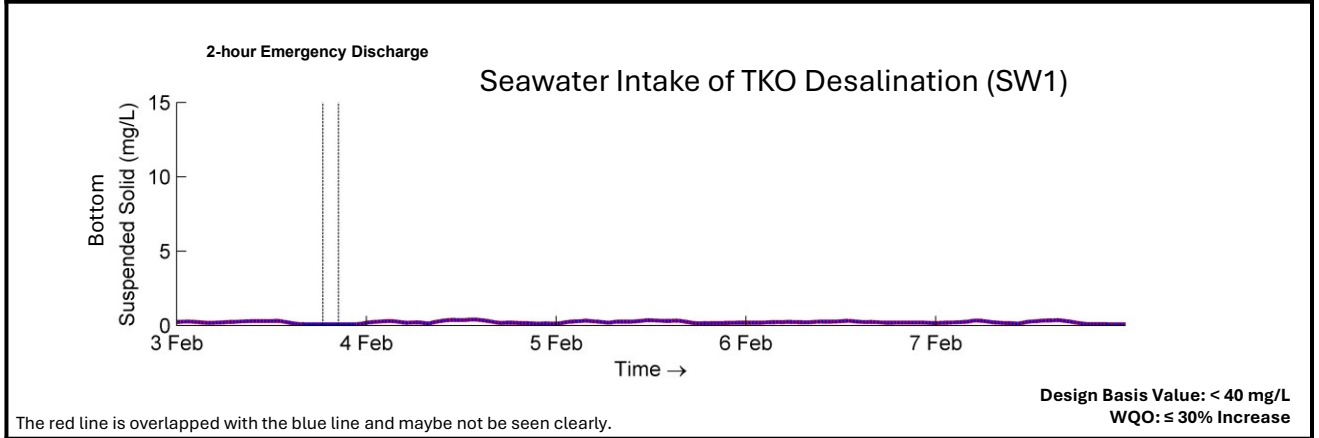
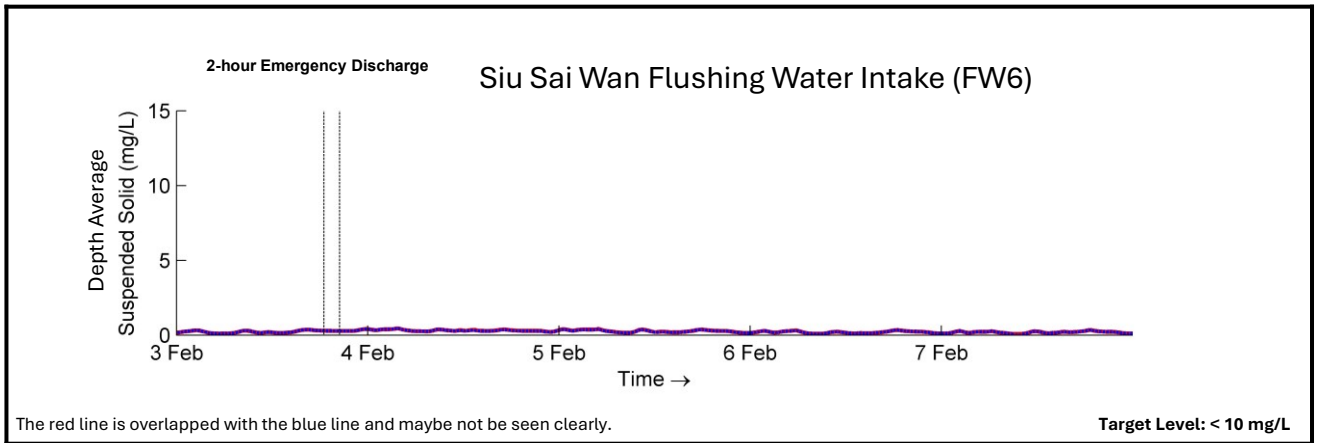


Appendix 5.11h

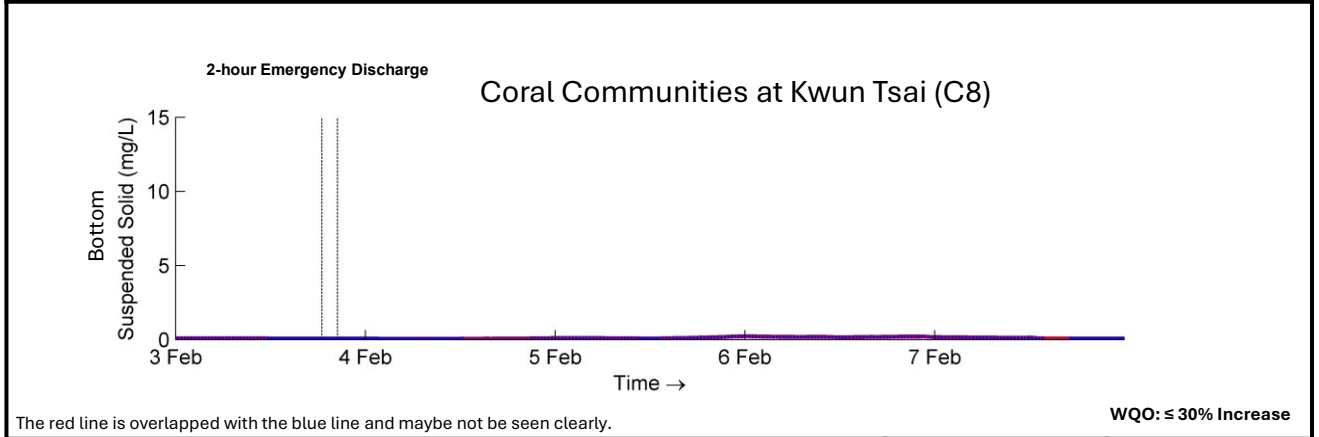
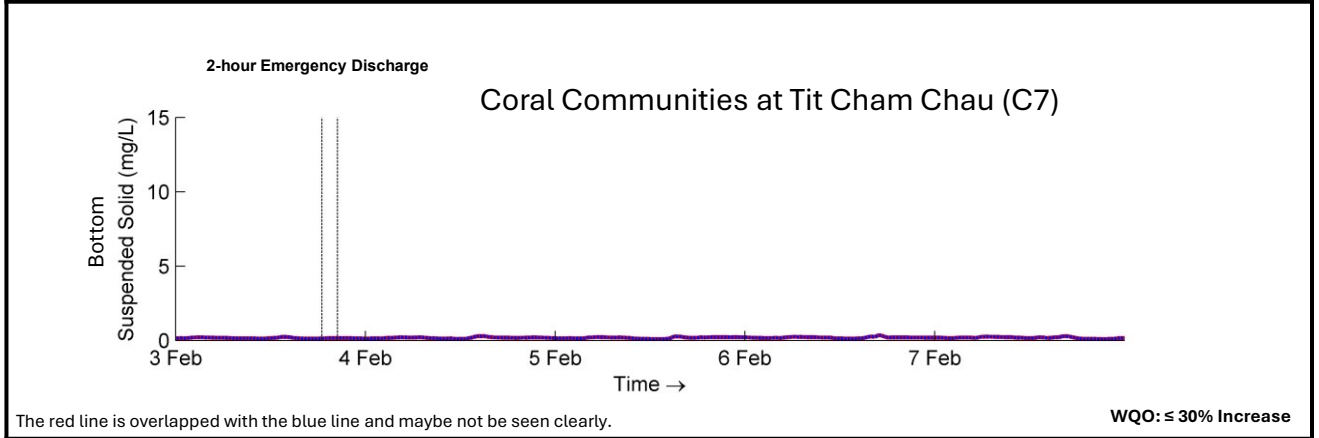
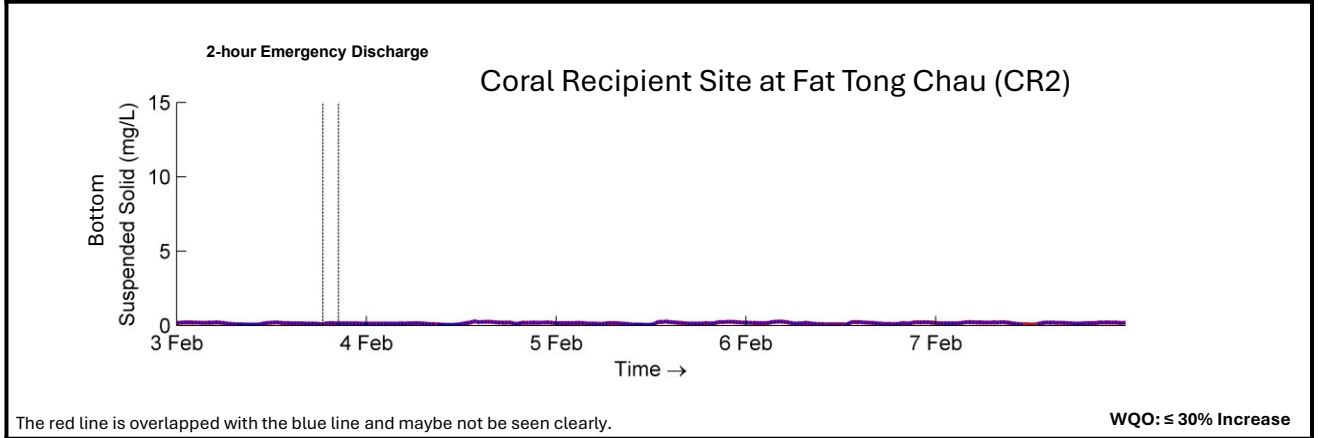
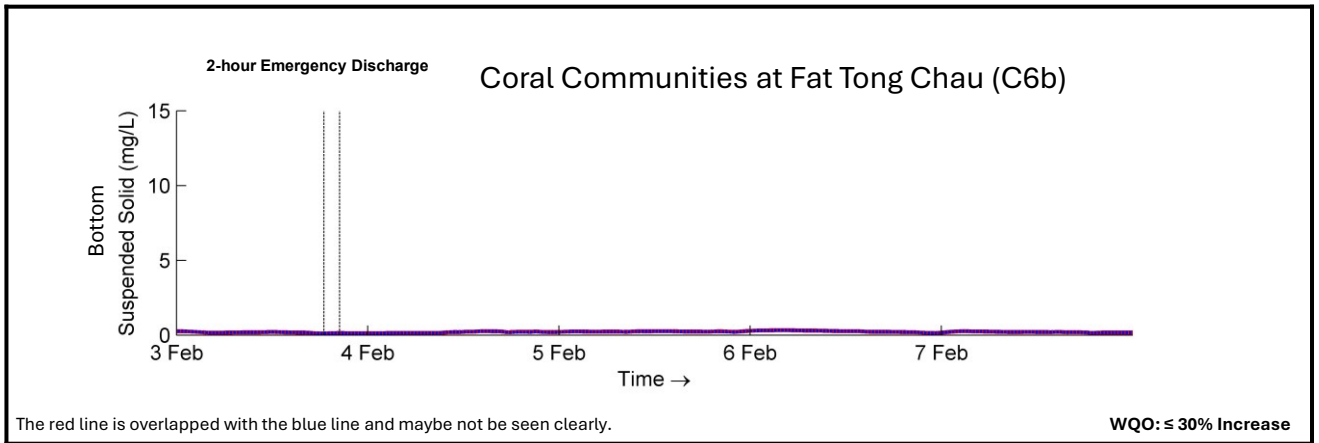
Operation Phase Water Quality Timeseries Plots - Suspended Solids

Appendix 5.11h Timeseries Plot for Suspended Solids

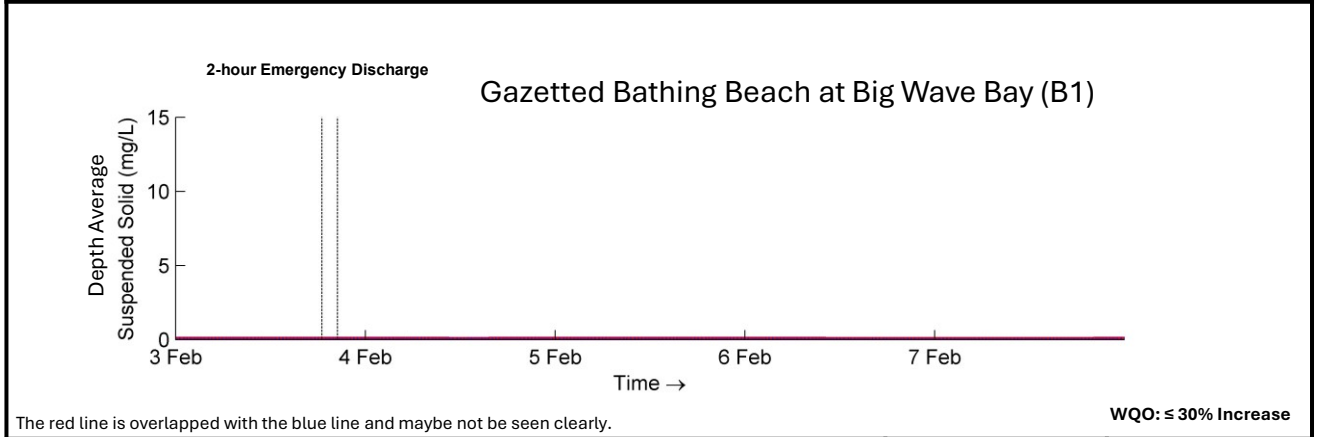
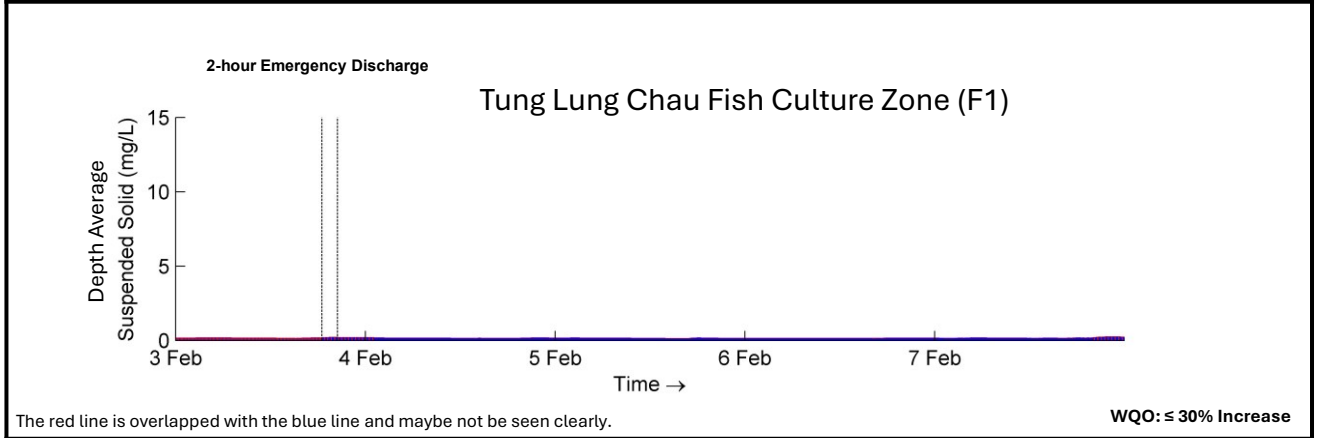
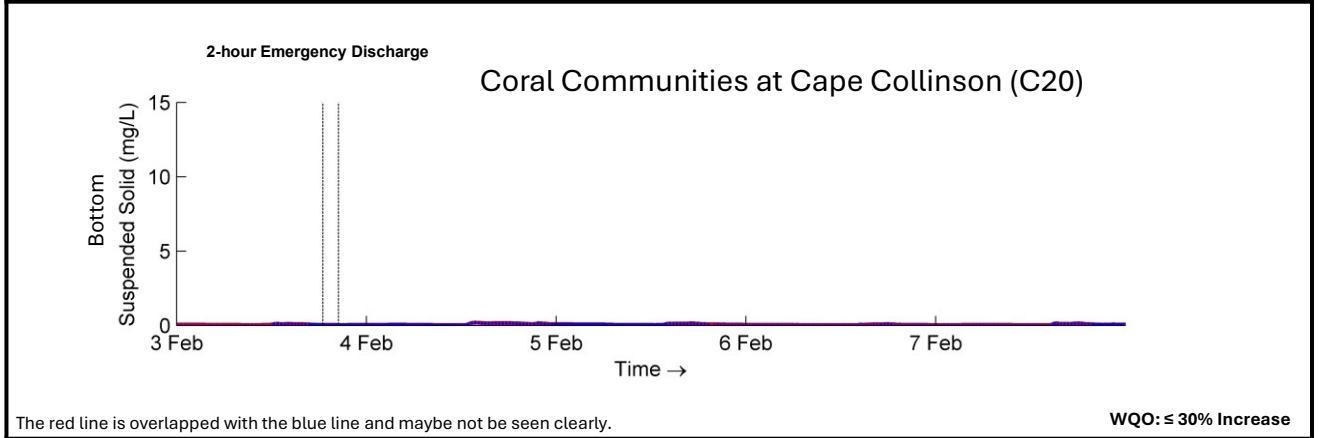
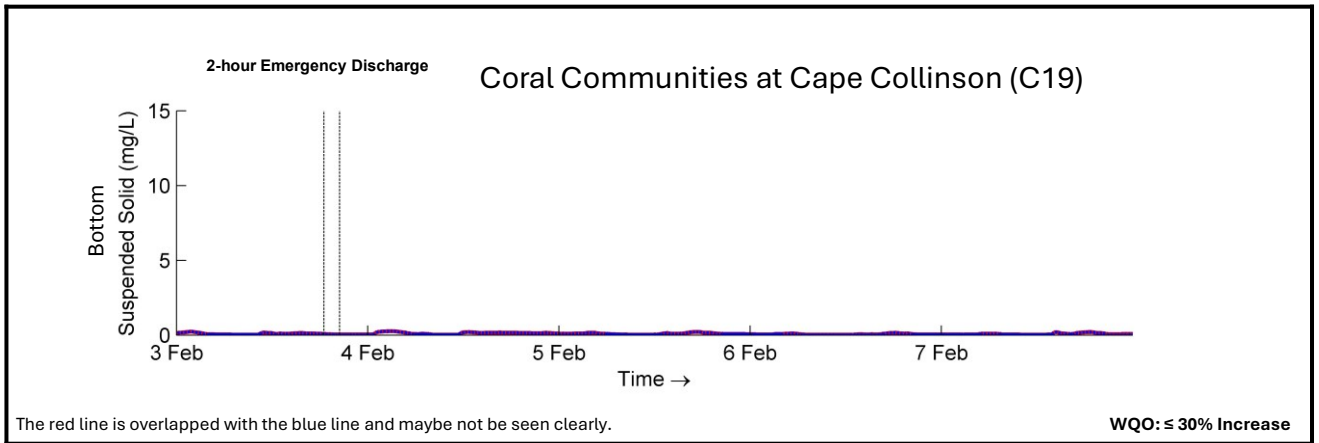
WSR	Assessment Layer	Season	Page & Location
FW6	Depth-Average	Dry	2 Top
SW1	Bottom	Dry	2 Upper
SW1	Mid-Depth	Dry	2 Lower
SW1	Depth-Average	Dry	2 Bottom
C6b	Bottom	Dry	3 Top
CR2	Bottom	Dry	3 Upper
C7	Bottom	Dry	3 Lower
C8	Bottom	Dry	3 Bottom
C19	Bottom	Dry	4 Top
C20	Bottom	Dry	4 Upper
F1	Depth-Average	Dry	4 Lower
B1	Depth-Average	Dry	4 Bottom
CW5	Depth-Average	Dry	5 Top
FW6	Depth-Average	Wet	6 Top
SW1	Bottom	Wet	6 Upper
SW1	Mid-Depth	Wet	6 Lower
SW1	Depth-Average	Wet	6 Bottom
C6b	Bottom	Wet	7 Top
CR2	Bottom	Wet	7 Upper
C7	Bottom	Wet	7 Lower
C8	Bottom	Wet	7 Bottom
C19	Bottom	Wet	8 Top
C20	Bottom	Wet	8 Upper
F1	Depth-Average	Wet	8 Lower
F2	Depth-Average	Wet	8 Bottom
CW5	Depth-Average	Wet	9 Top



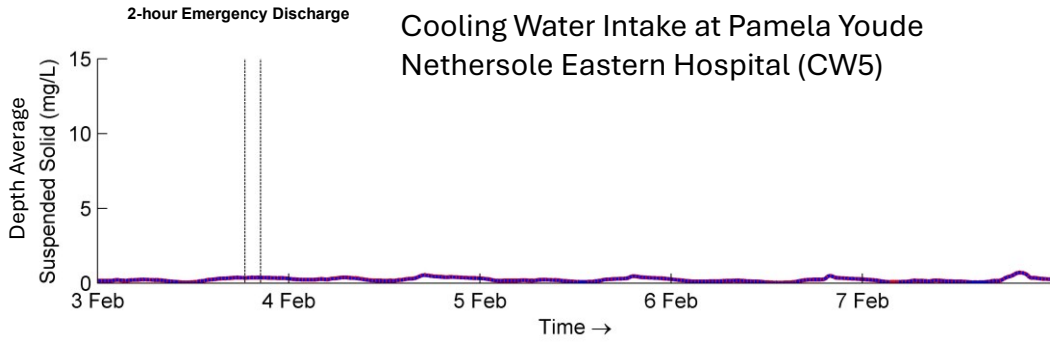
Timeseries Plot for Suspended Solids Top: FW6 Depth-Average; Upper: SW1 Bottom; Lower: SW1 Mid-Depth; Bottom: SW1 Depth-Average Blue: Normal EPP Operation Red: "With 2-hour Emergency Discharge" Scenario		Dry
	CE 40/2023 (CE)	
Binnies	Appendix 5.11h	2



Timeseries Plot for Suspended Solids Top: C6b Bottom; Upper: CR2 Bottom; Lower: C7 Bottom; Bottom: C8 Bottom Blue: Normal EPP Operation Red: "With 2-hour Emergency Discharge" Scenario		Dry
	CE 40/2023 (CE)	
Binnies	Appendix 5.11h	3



Timeseries Plot for Suspended Solids Top: C19 Bottom; Upper: C20 Bottom; Lower: F1 Depth-Average; Bottom: B1 Depth-Average Blue: Normal EPP Operation Red: "With 2-hour Emergency Discharge" Scenario	Dry CE 40/2023 (CE)
Binnies	Appendix 5.11h 4



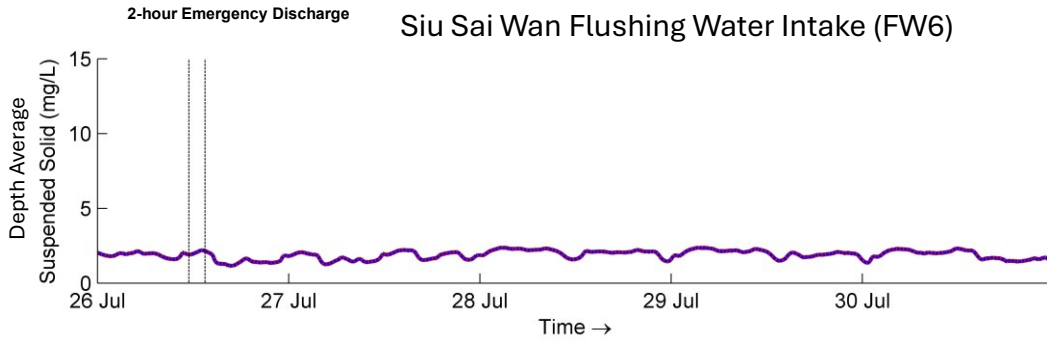
The red line is overlapped with the blue line and maybe not be seen clearly.

No WQO is available

Timeseries Plot for Suspended Solids
 Top: CW5 Depth-Average
 Blue: Normal EPP Operation
 Red: "With 2-hour Emergency Discharge" Scenario

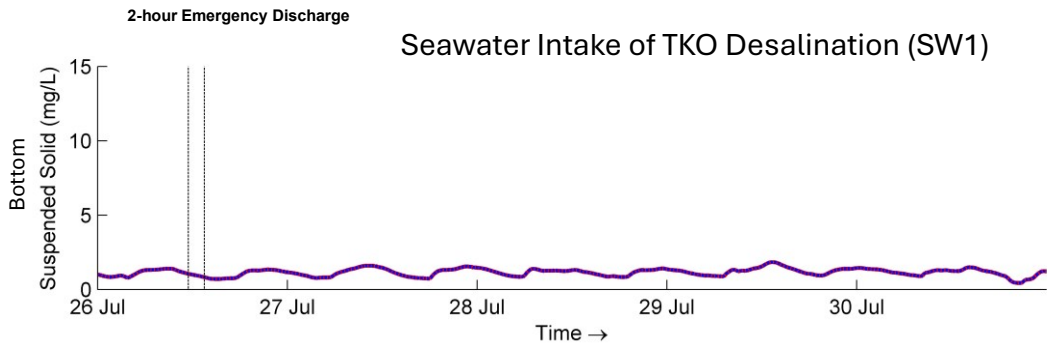
Dry

CE 40/2023 (CE)



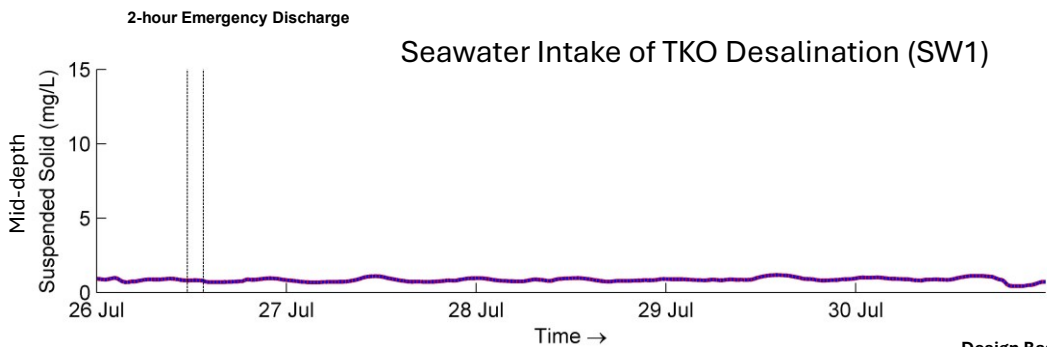
The red line is overlapped with the blue line and maybe not be seen clearly.

Target Level: < 10 mg/L



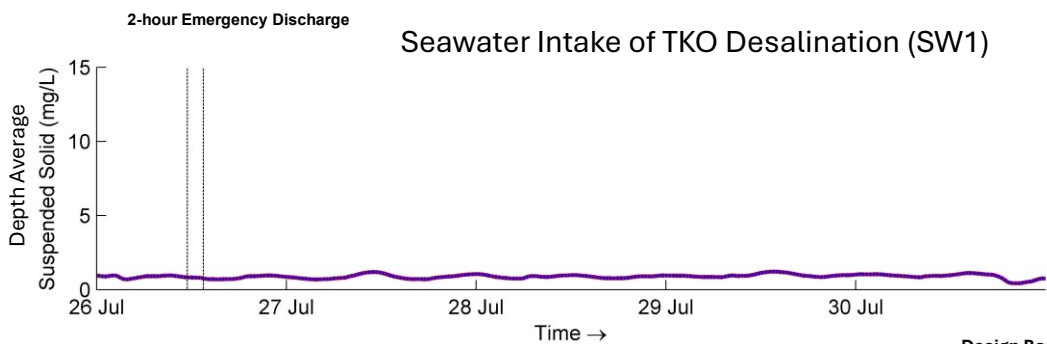
The red line is overlapped with the blue line and maybe not be seen clearly.

Design Basis Value: < 40 mg/L
WQO: ≤ 30% Increase



The red line is overlapped with the blue line and maybe not be seen clearly.

Design Basis Value: < 40 mg/L
WQO: ≤ 30% Increase



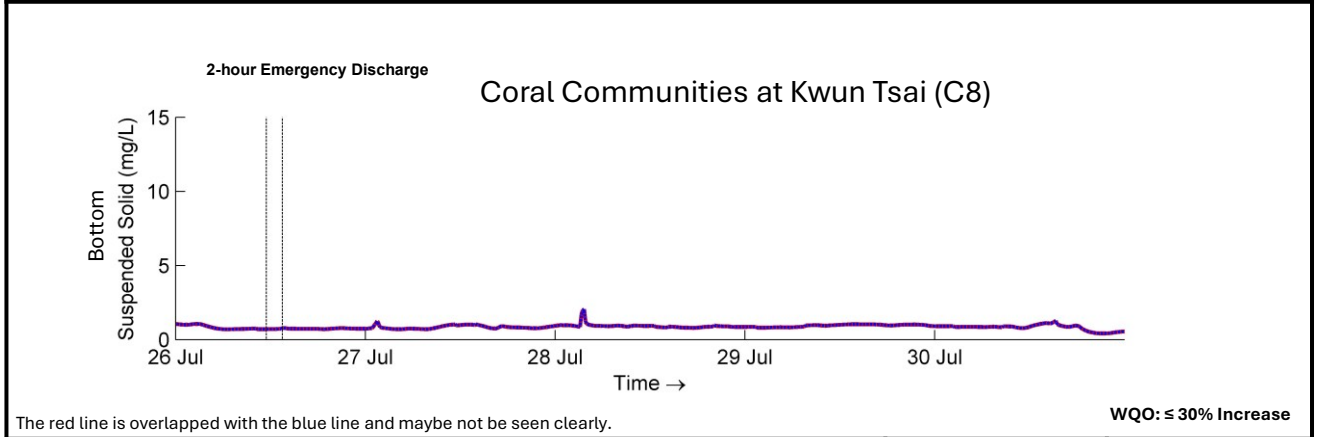
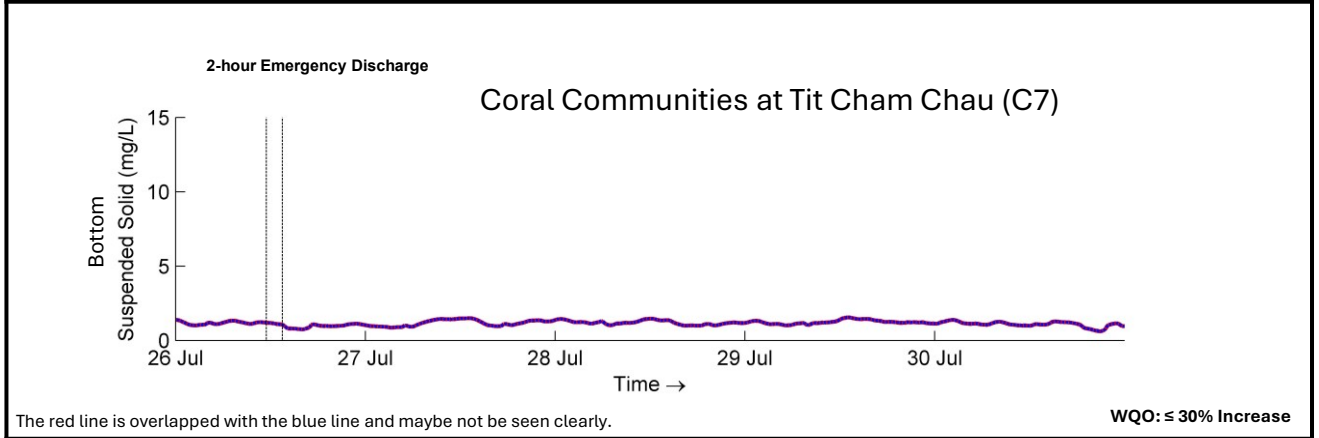
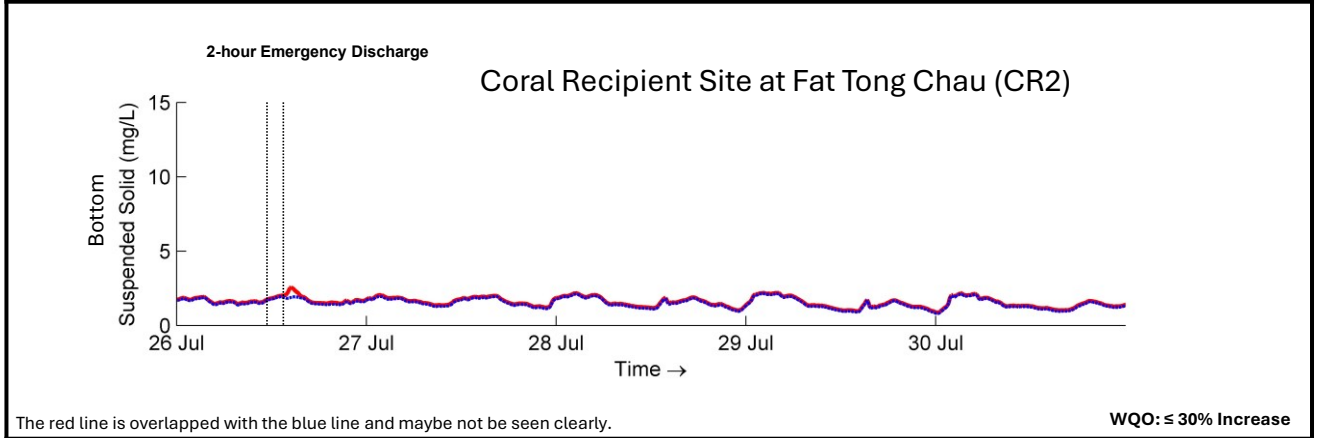
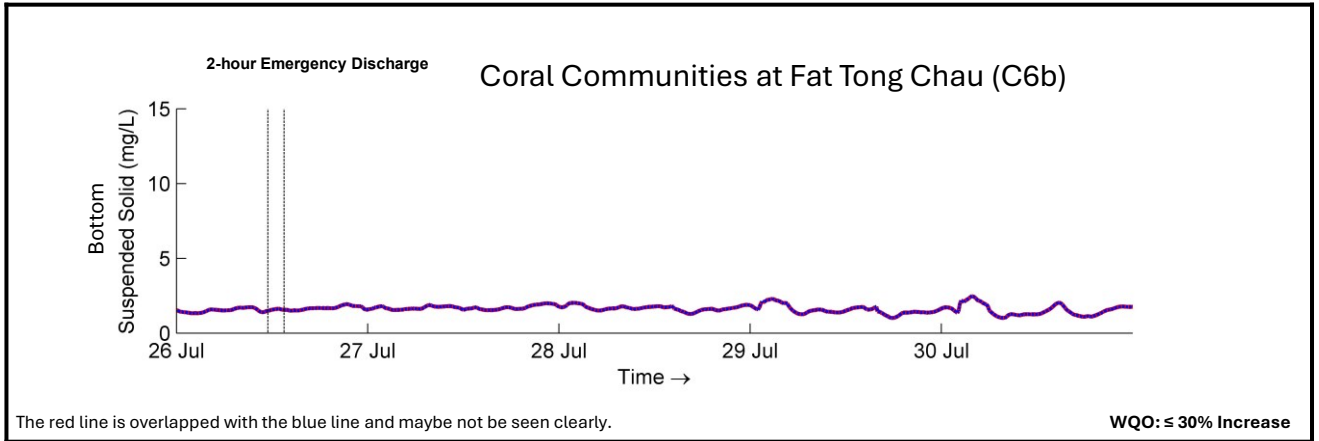
The red line is overlapped with the blue line and maybe not be seen clearly.

Design Basis Value: < 40 mg/L
WQO: ≤ 30% Increase

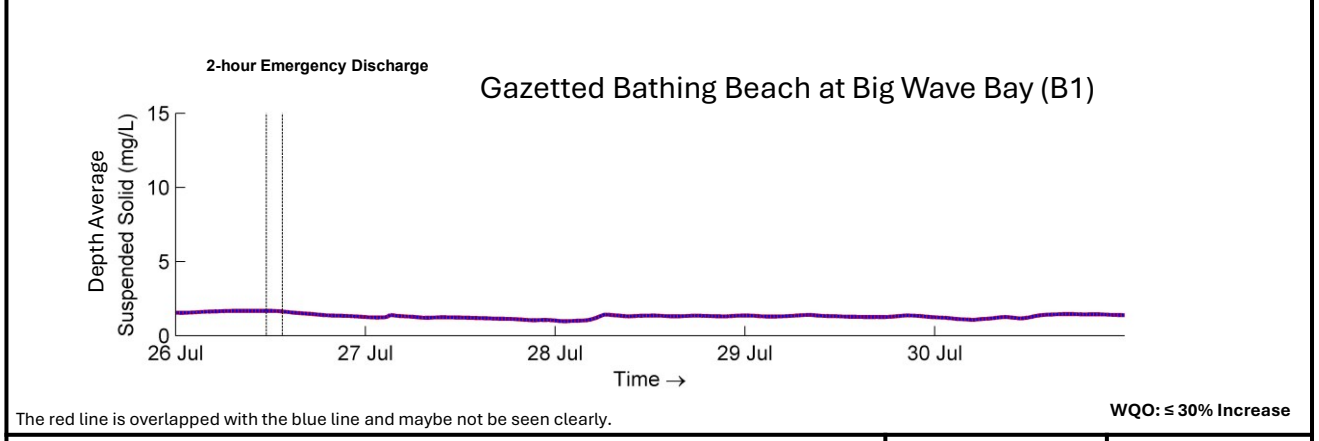
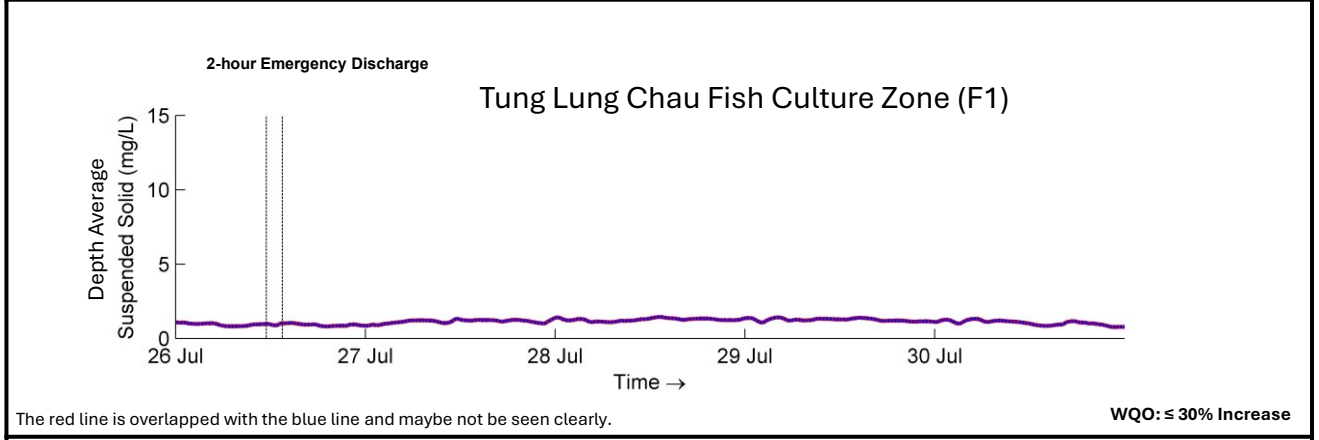
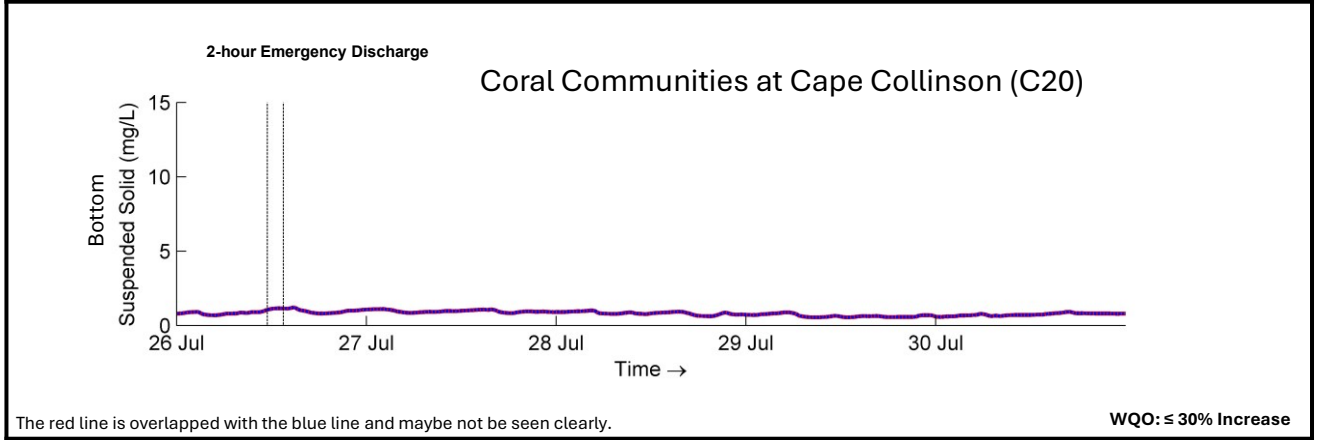
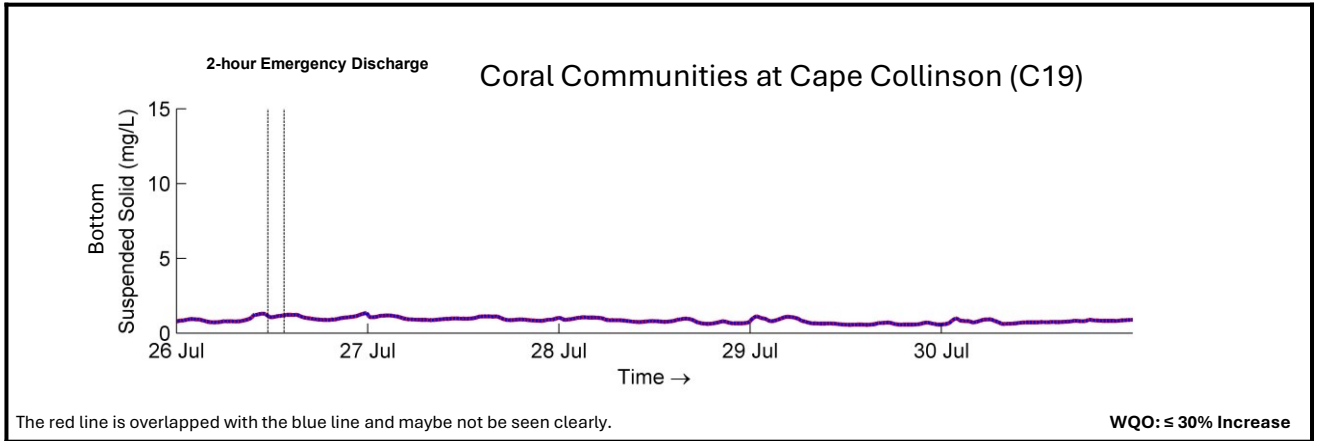
Timeseries Plot for Suspended Solids
 Top: FW6 Depth-Average; Upper: SW1 Bottom;
 Lower: SW1 Mid-Depth; Bottom: SW1 Depth-Average
 Blue: Normal EPP Operation
 Red: "With 2-hour Emergency Discharge" Scenario

Wet

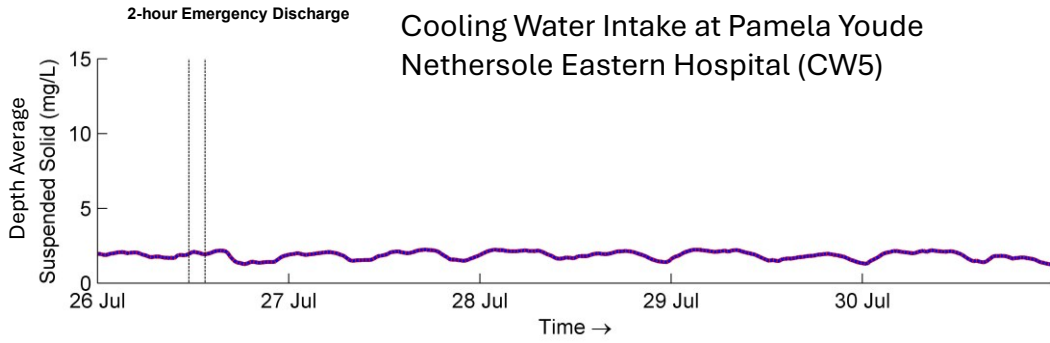
CE 40/2023 (CE)



<p>Timeseries Plot for Suspended Solids Top: C6b Bottom; Upper: CR2 Bottom; Lower: C7 Bottom; Bottom: C8 Bottom Blue: Normal EPP Operation Red: "With 2-hour Emergency Discharge" Scenario</p>		Wet
	CE 40/2023 (CE)	
Binnies	Appendix 5.11h	7



Timeseries Plot for Suspended Solids Top: C19 Bottom; Upper: C20 Bottom; Lower: F1 Depth-Average; Bottom: B1 Depth-Average Blue: Normal EPP Operation Red: "With 2-hour Emergency Discharge" Scenario	Wet
CE 40/2023 (CE)	
Binnies	Appendix 5.11h 8



The red line is overlapped with the blue line and maybe not be seen clearly.

No WQO is available

--

--

--

Timeseries Plot for Suspended Solids Top: CW5 Depth-Average Blue: Normal EPP Operation Red: "With 2-hour Emergency Discharge" Scenario		Wet
	CE 40/2023 (CE)	
Binnies	Appendix 5.11h	9