

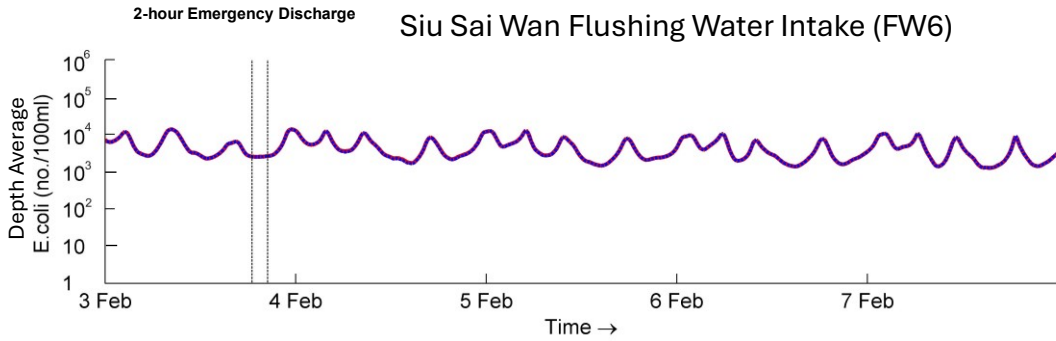
Appendix 5.11i

Operation Phase Water Quality Timeseries Plots and Table of Maximum Levels

- *E. coli*

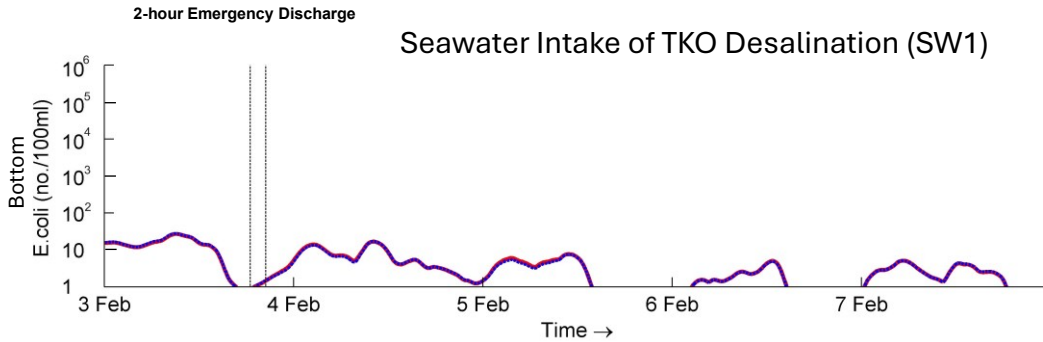
Appendix 5.11i Timeseries Plot for *E.coli* and Table Tabulating the Maximum Levels

WSR	Assessment Layer	Season	Page & Location
FW6	Depth-Average	Dry	2 Top
SW1	Bottom	Dry	2 Upper
SW1	Mid-Depth	Dry	2 Lower
SW1	Depth-Average	Dry	2 Bottom
C6b	Bottom	Dry	3 Top
CR2	Bottom	Dry	3 Upper
C7	Bottom	Dry	3 Lower
C8	Bottom	Dry	3 Bottom
C19	Bottom	Dry	4 Top
C20	Bottom	Dry	4 Upper
F1	Depth-Average	Dry	4 Lower
FW5	Depth-Average	Dry	4 Bottom
CW5	Depth-Average	Dry	5 Top
B1	Depth-Average	Dry	5 Upper
FW6	Depth-Average	Wet	6 Top
SW1	Bottom	Wet	6 Upper
SW1	Mid-Depth	Wet	6 Lower
SW1	Depth-Average	Wet	6 Bottom
C6b	Bottom	Wet	7 Top
CR2	Bottom	Wet	7 Upper
C7	Bottom	Wet	7 Lower
C8	Bottom	Wet	7 Bottom
C19	Bottom	Wet	8 Top
C20	Bottom	Wet	8 Upper
F1	Depth-Average	Wet	8 Lower
FW5	Depth-Average	Wet	8 Bottom
CW5	Depth-Average	Dry	9 Top
B1	Depth-Average	Dry	9 Upper



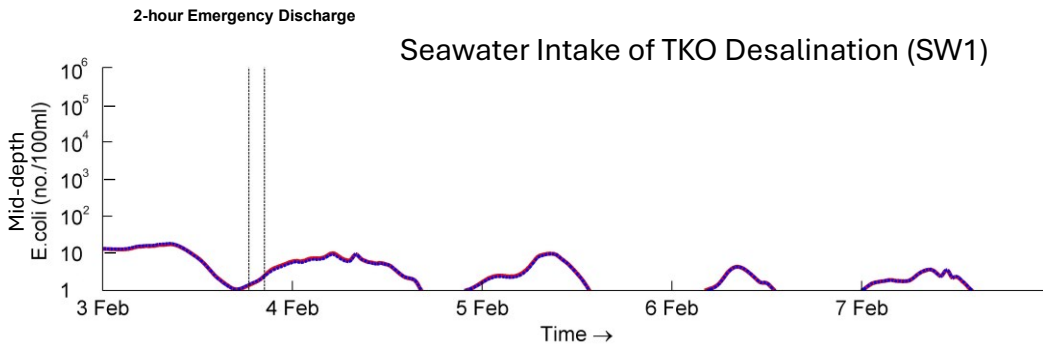
The red line is overlapped with the blue line and maybe not be seen clearly.

Target Level: <20,000 no. / 100mL



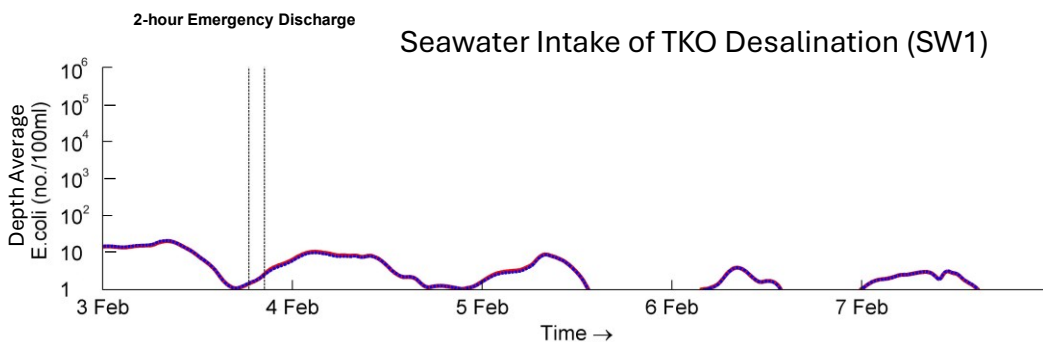
The red line is overlapped with the blue line and maybe not be seen clearly.

No WQO is available



The red line is overlapped with the blue line and maybe not be seen clearly.

No WQO is available



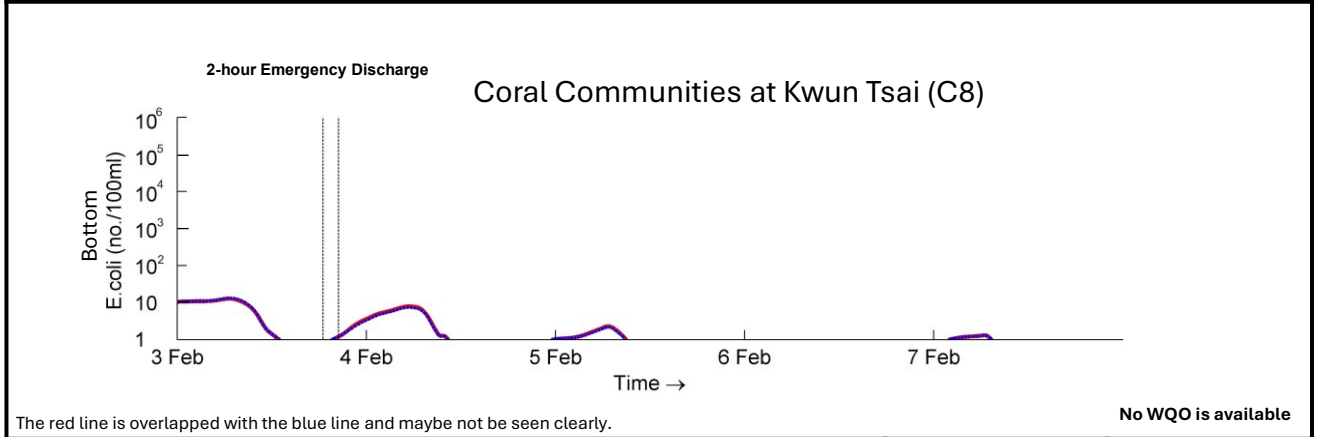
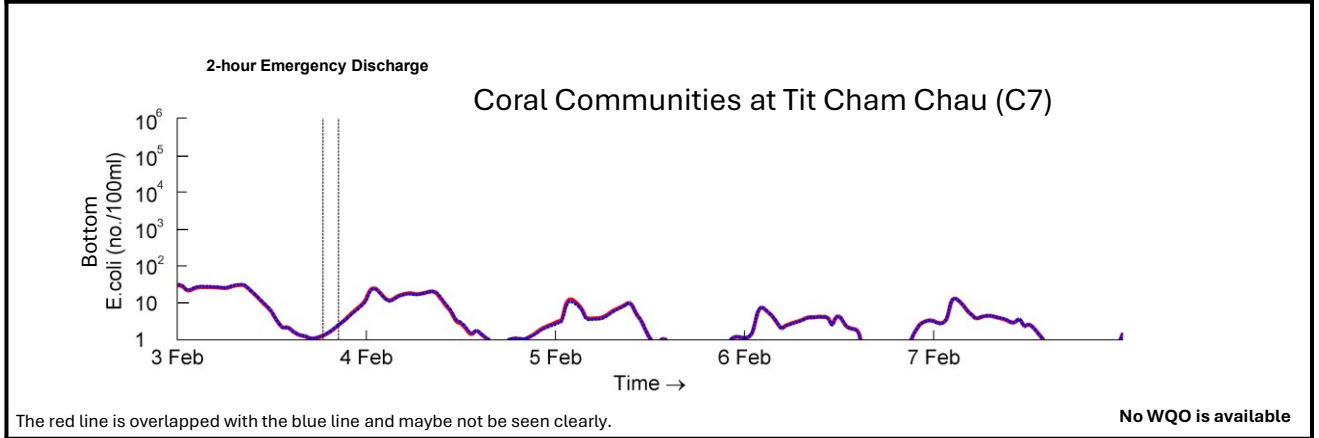
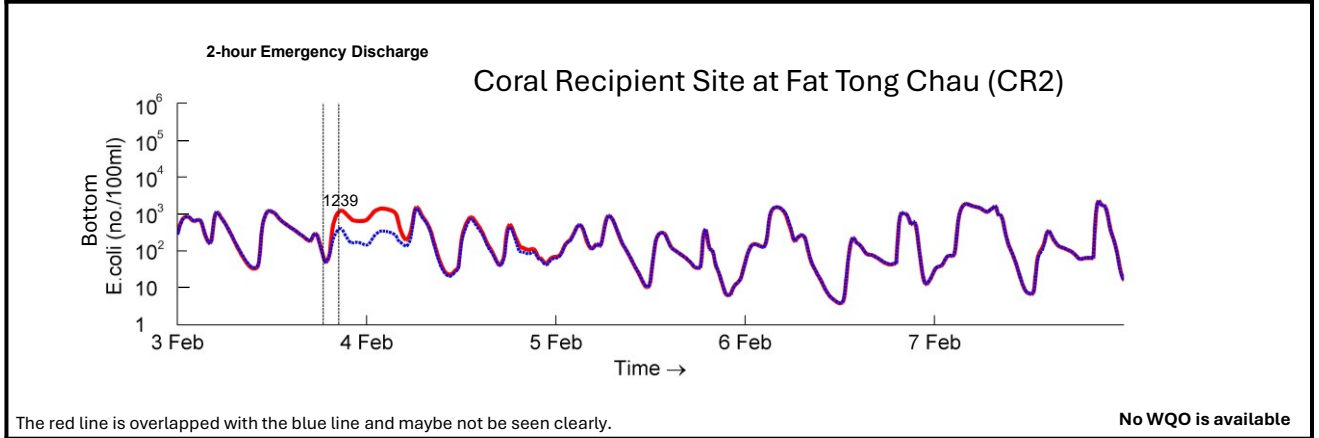
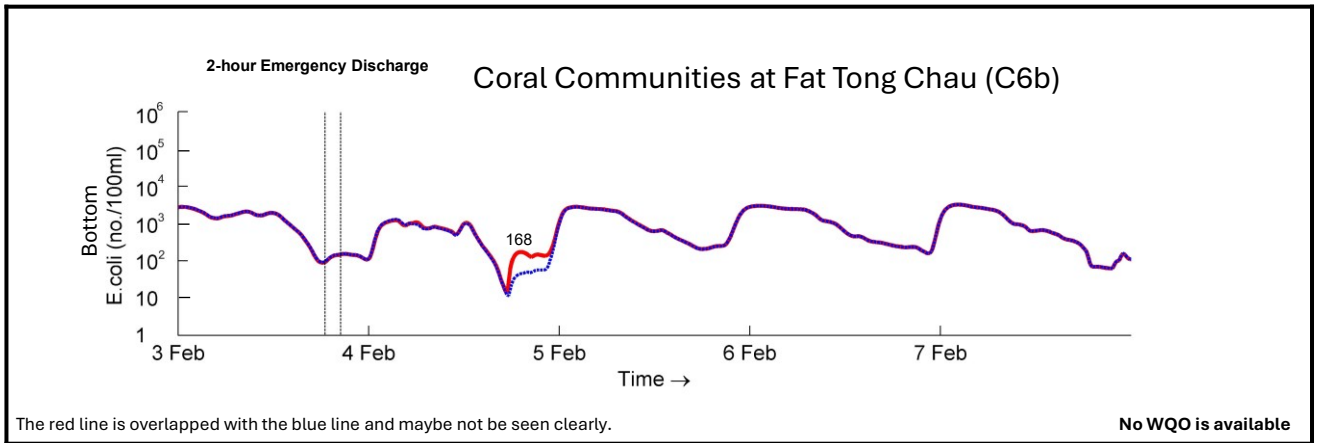
The red line is overlapped with the blue line and maybe not be seen clearly.

No WQO is available

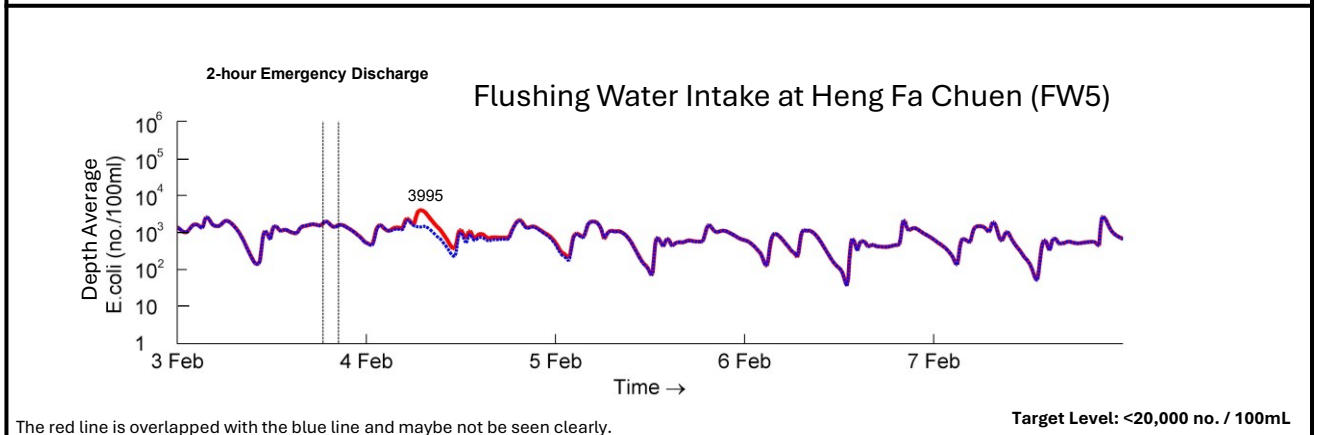
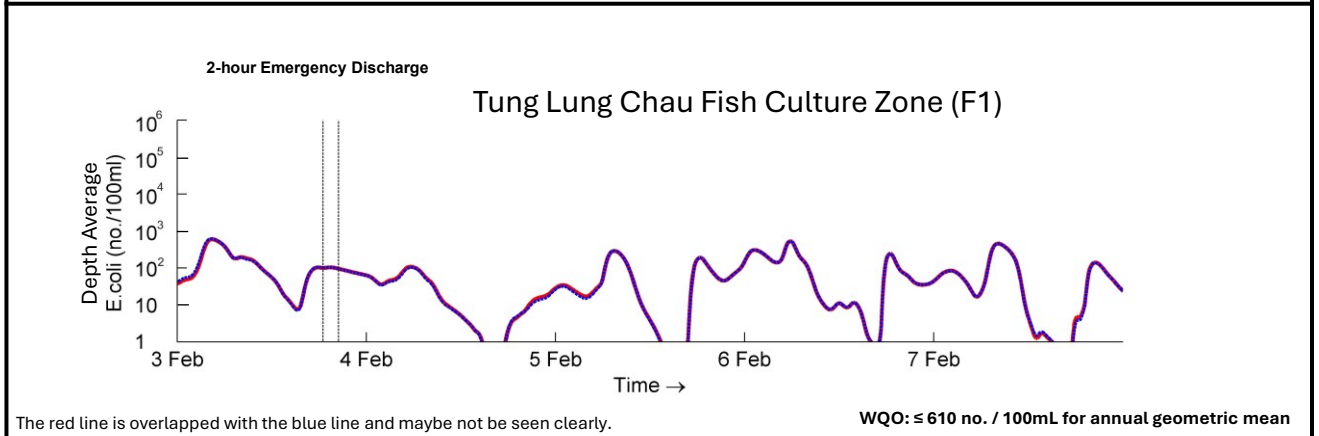
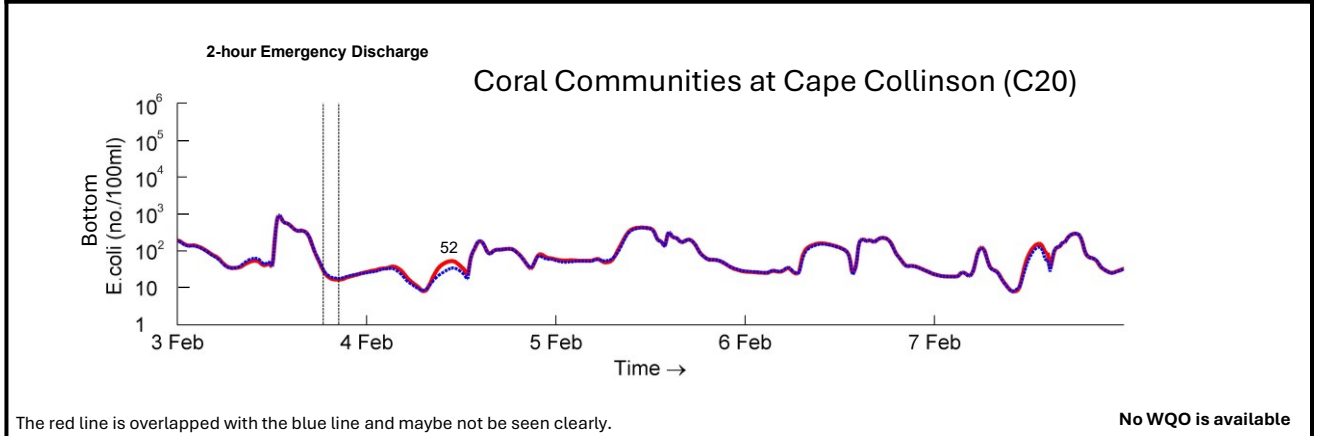
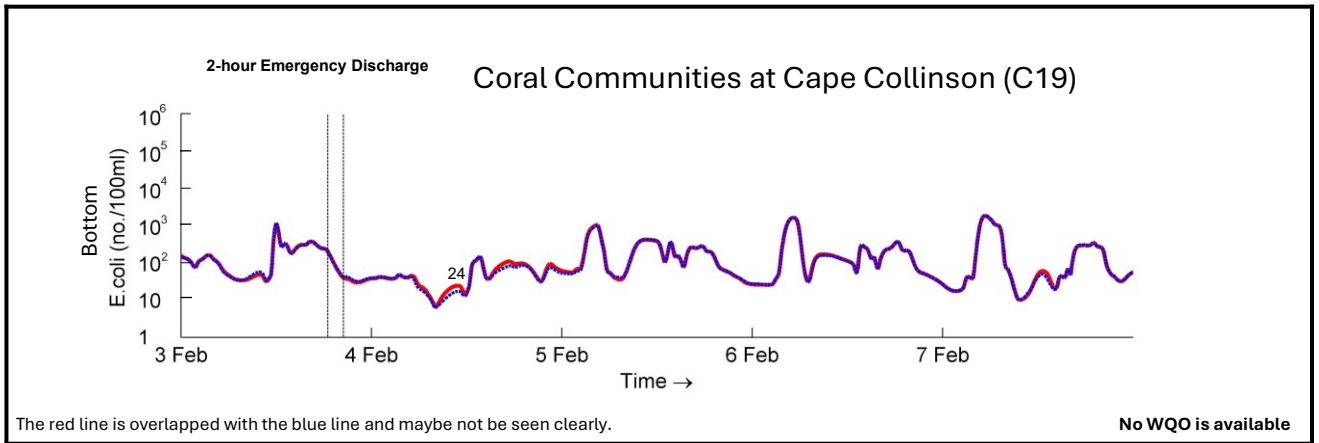
Timeseries Plot for E.coli
 Top: FW6 Depth-Average; Upper: SW1 Bottom;
 Lower: SW1 Mid-Depth; Bottom: SW1 Depth-Average
 Blue: Normal EPP Operation
 Red: "With 2-hour Emergency Discharge" Scenario

Dry

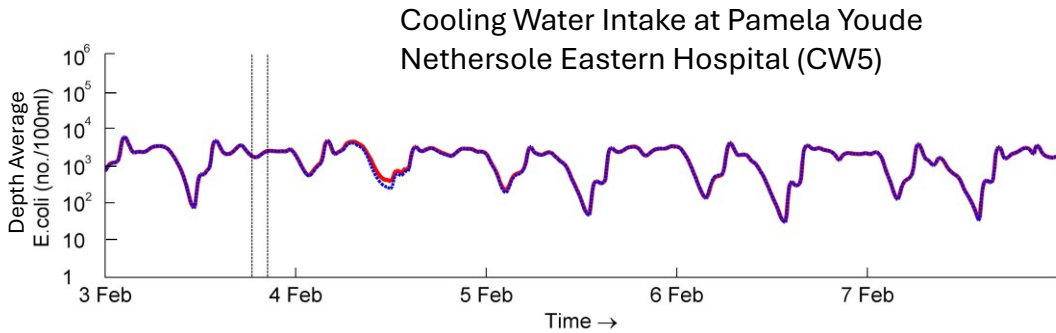
CE 40/2023 (CE)



<p>Timeseries Plot for E.coli Top: C6b Bottom; Upper: CR2 Bottom; Lower: C7 Bottom; Bottom: C8 Bottom Blue: Normal EPP Operation Red: "With 2-hour Emergency Discharge" Scenario</p>		Dry
	CE 40/2023 (CE)	
Binnies	Appendix 5.11i	3

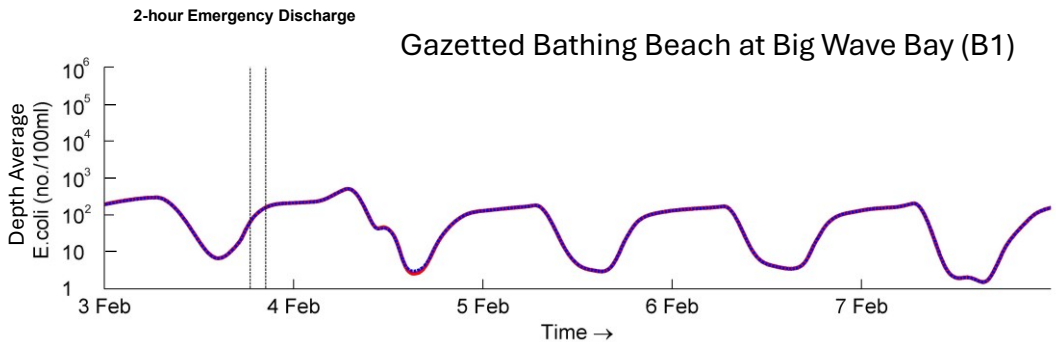


Timeseries Plot for E.coli Top: C19 Bottom; Upper: C20 Bottom; Lower: F1 Depth-Average; Bottom: FW5 Depth-Average Blue: Normal EPP Operation Red: "With 2-hour Emergency Discharge" Scenario		Dry
	CE 40/2023 (CE)	
Binnies	Appendix 5.11i	4



The red line is overlapped with the blue line and maybe not be seen clearly.

No WQO is available



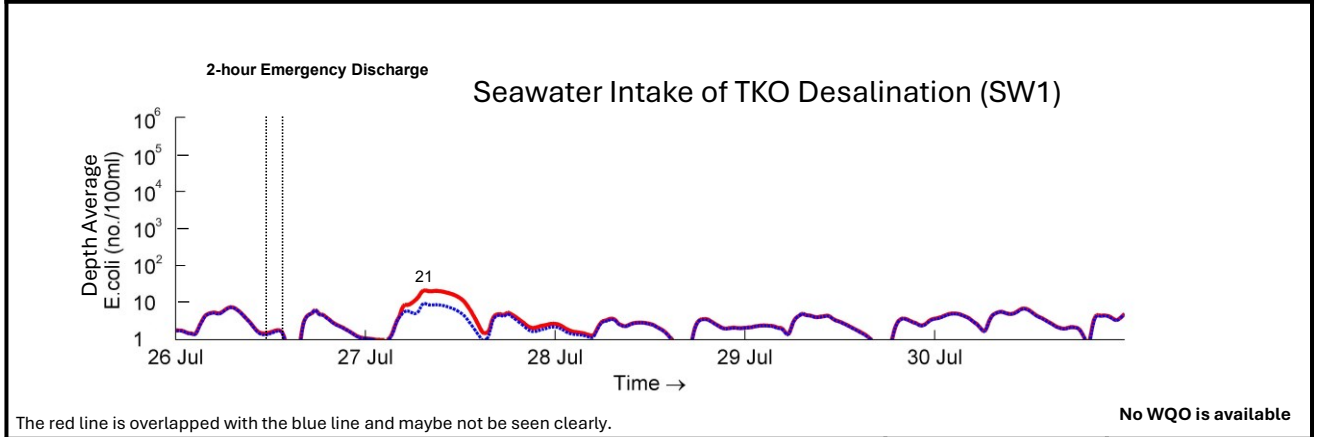
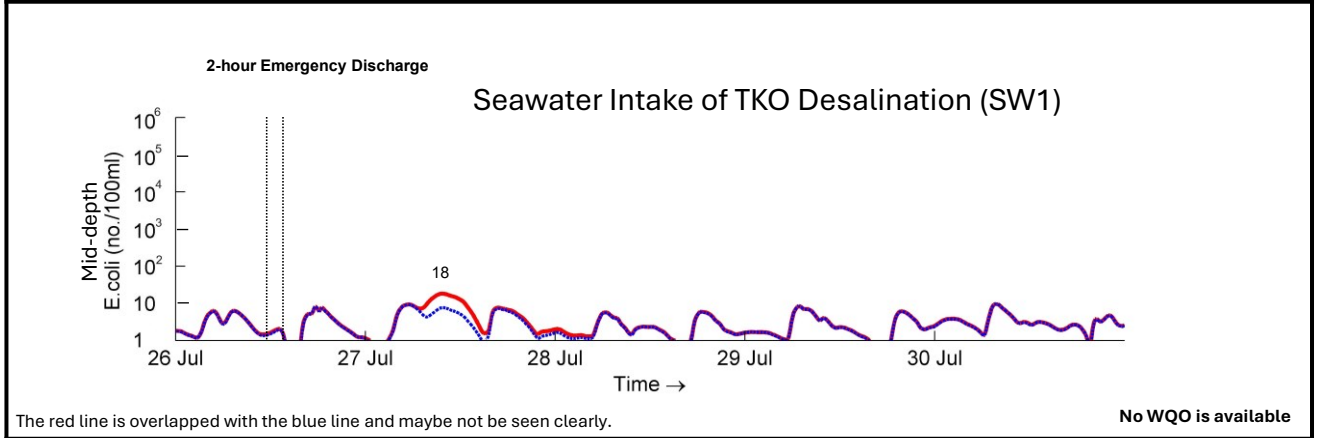
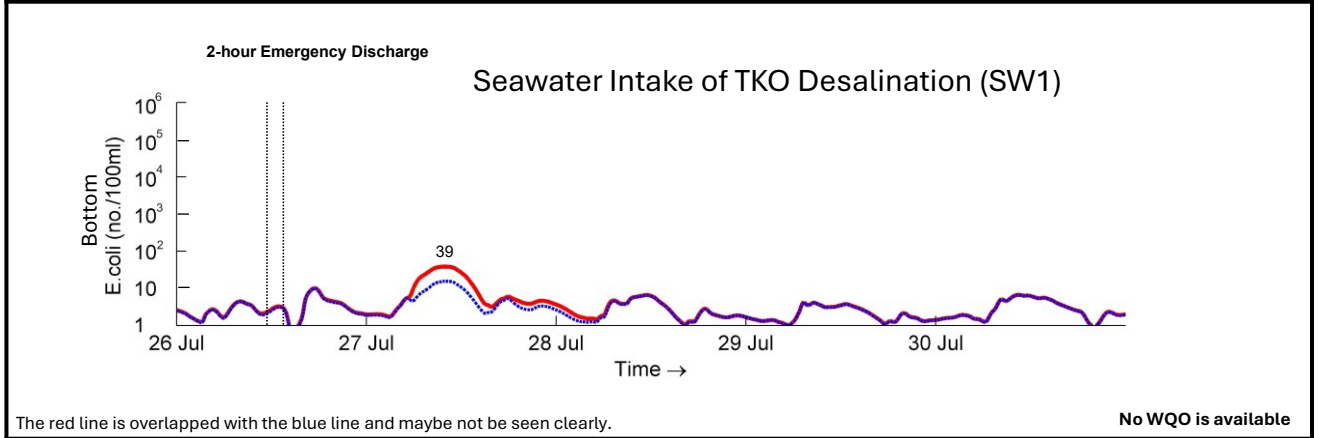
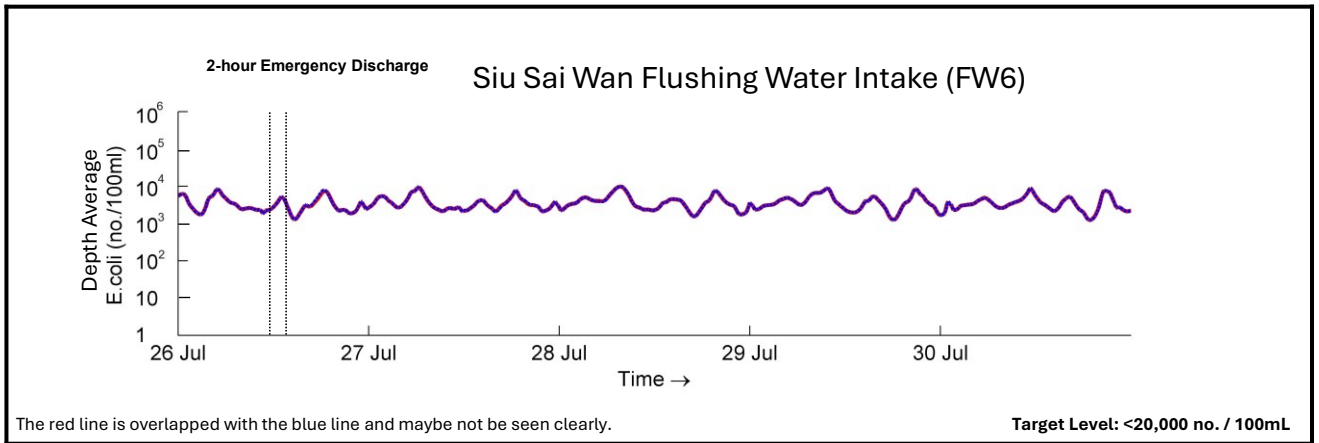
The red line is overlapped with the blue line and maybe not be seen clearly.

WQO: ≤ 180 no. / 100mL for annual geometric mean (March to October)

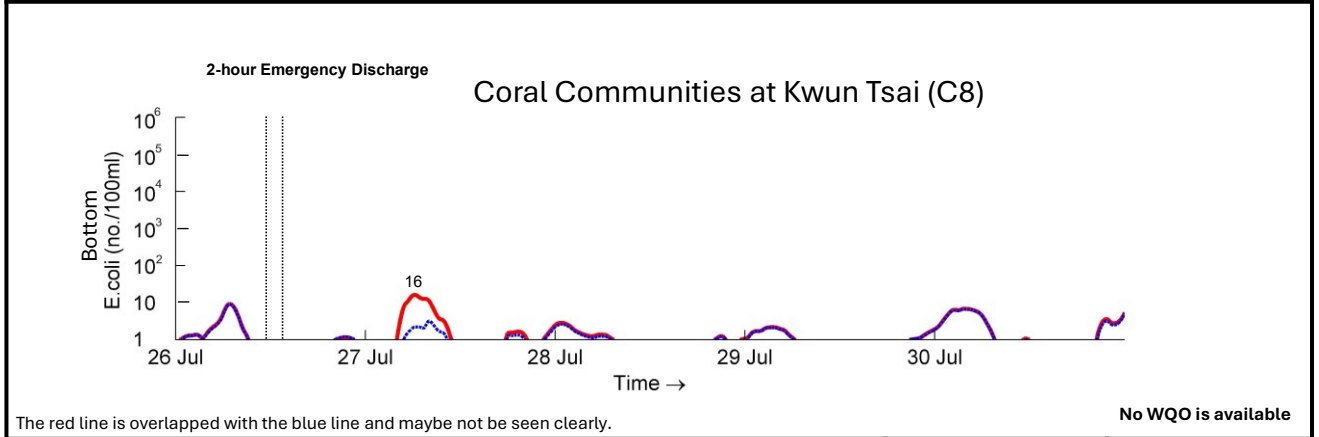
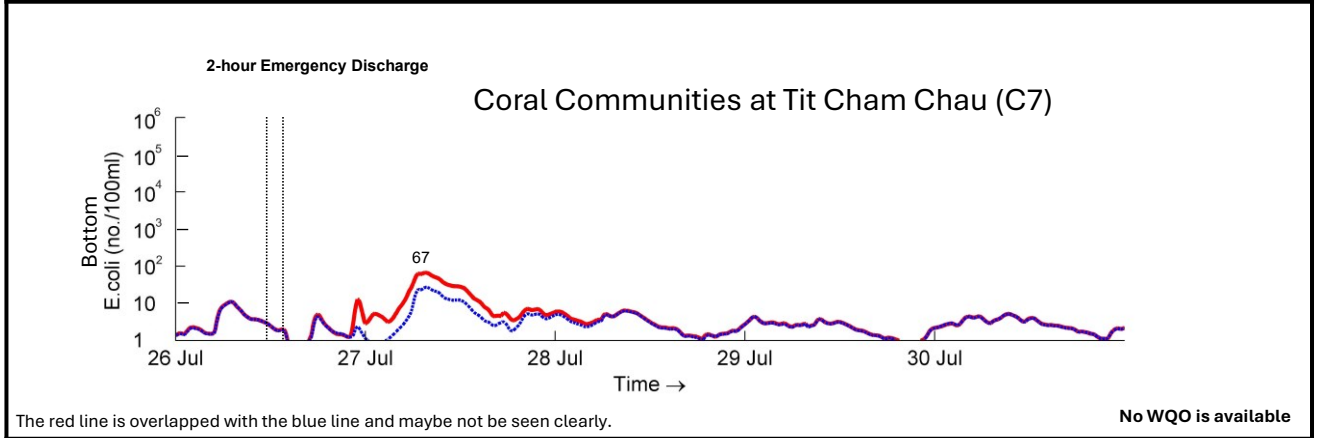
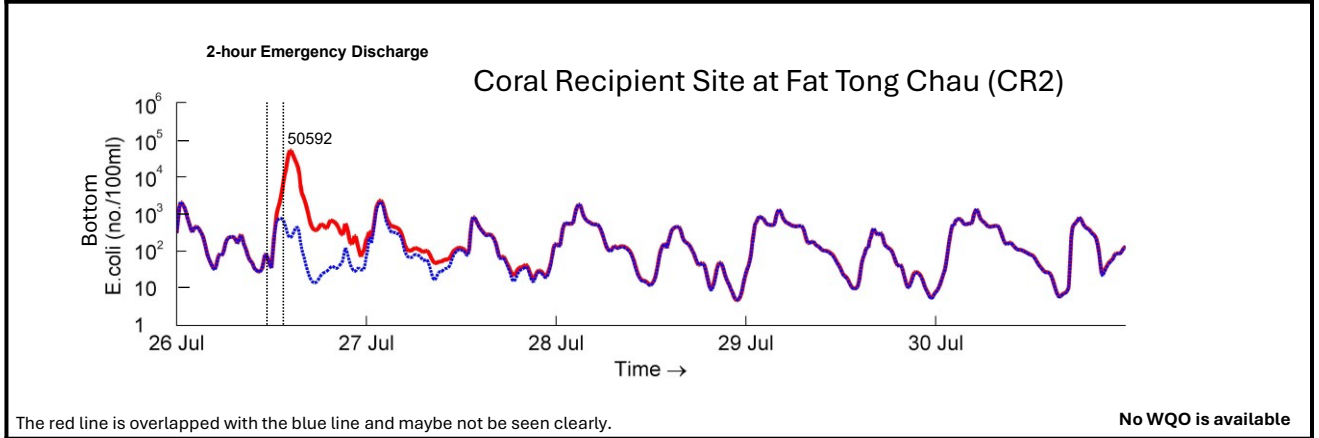
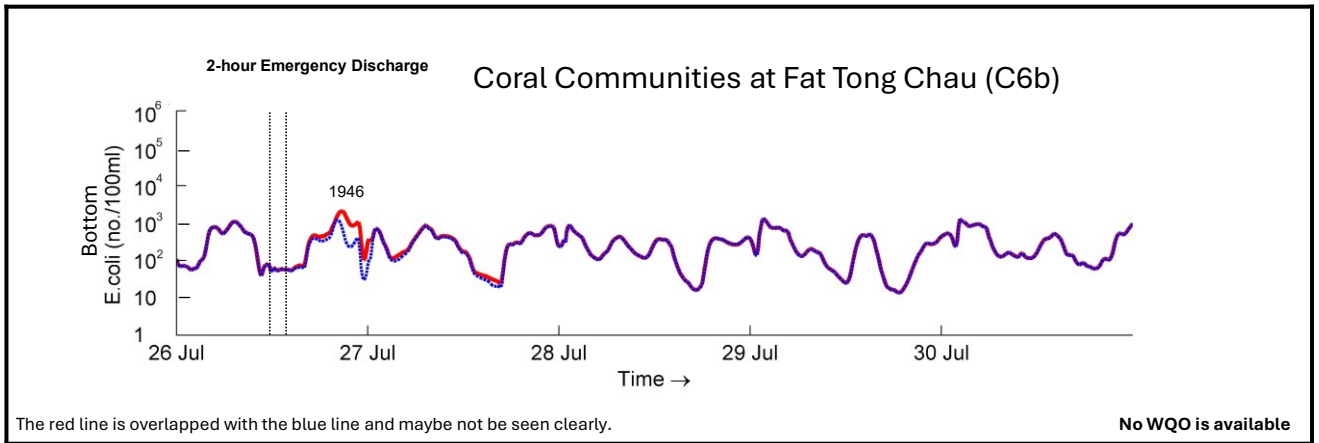
Timeseries Plot for E.coli
 Top: CW5 Depth-Average; Upper: B1 Depth-Average
 Blue: Normal EPP Operation
 Red: "With 2-hour Emergency Discharge" Scenario

Dry

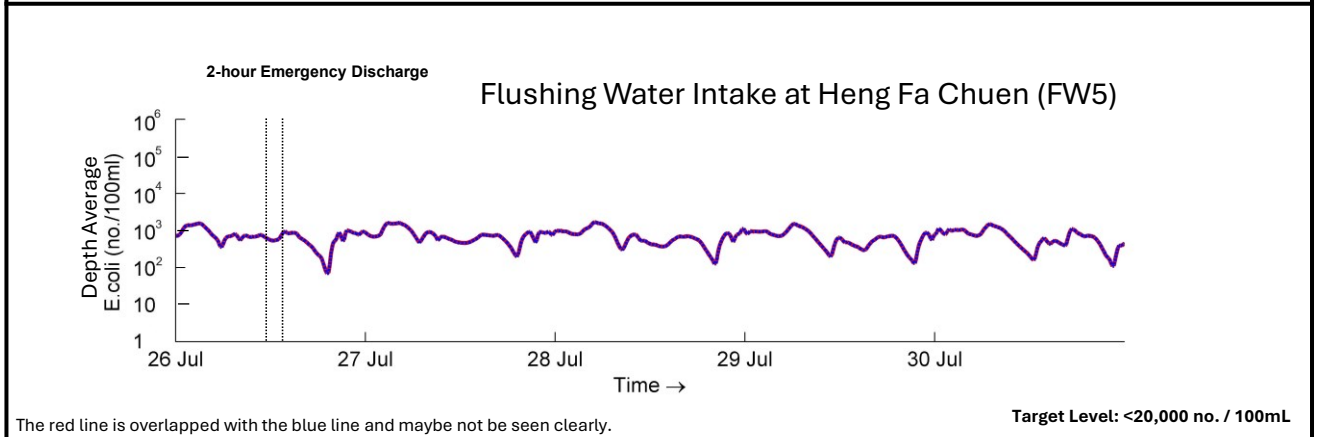
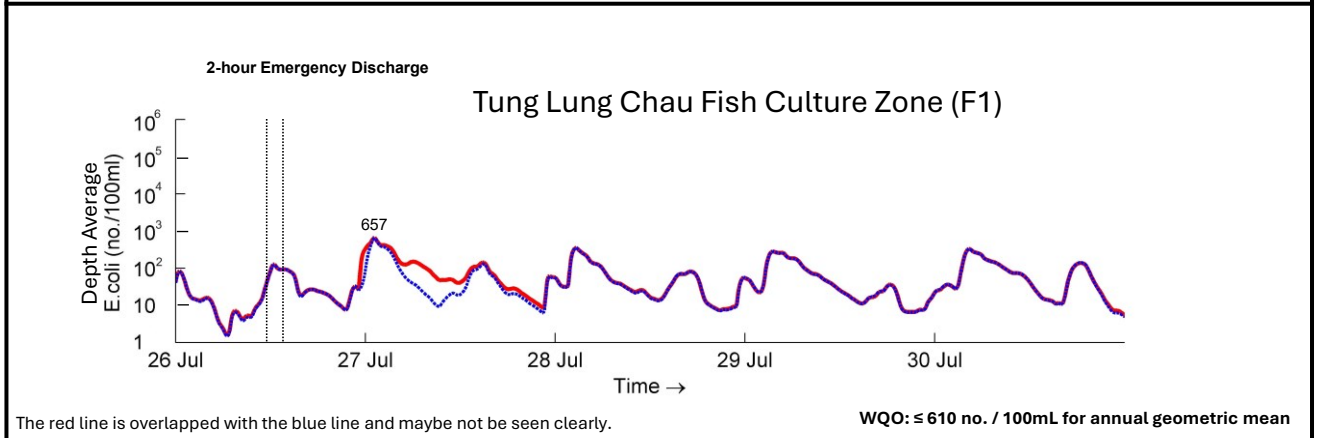
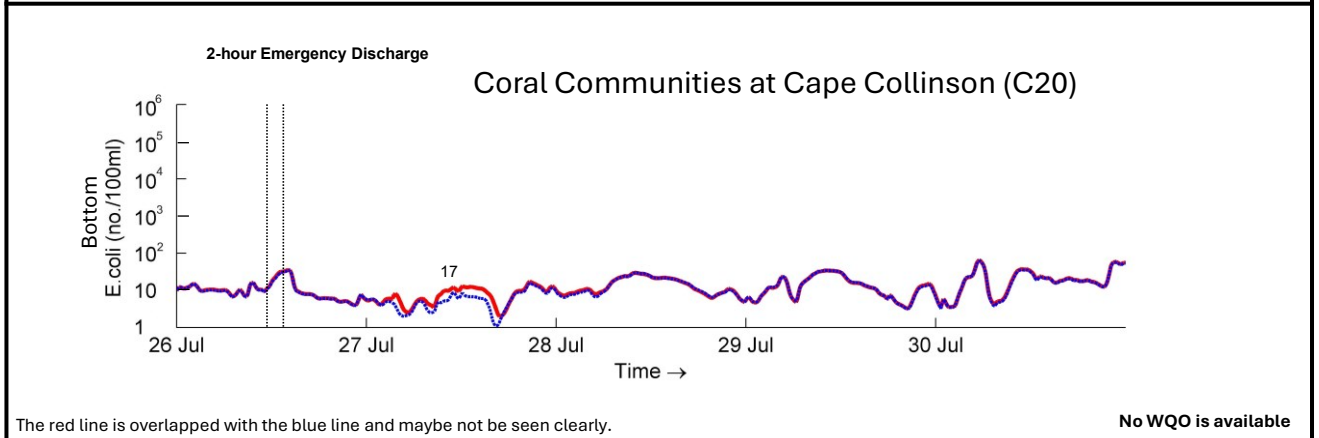
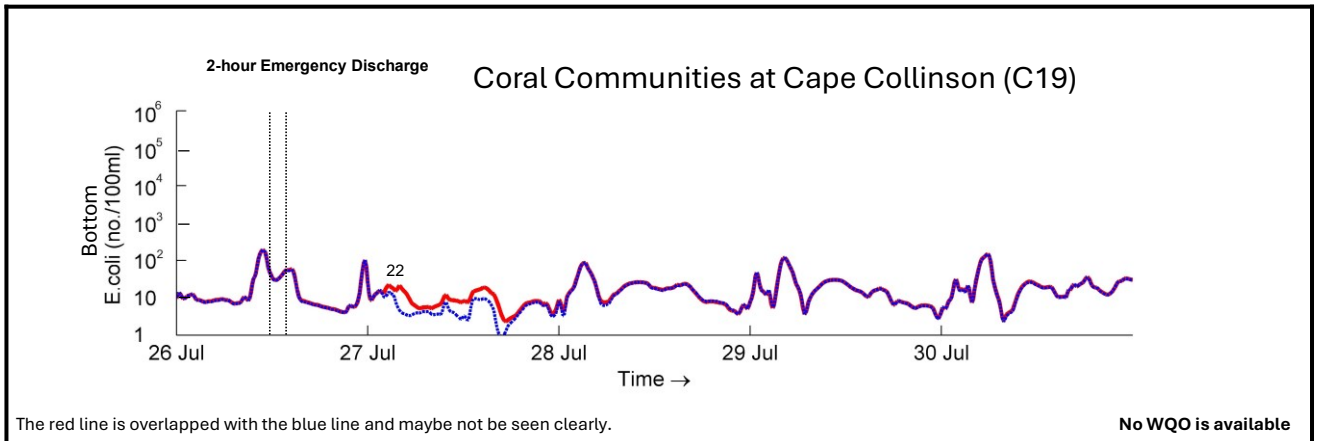
CE 40/2023 (CE)



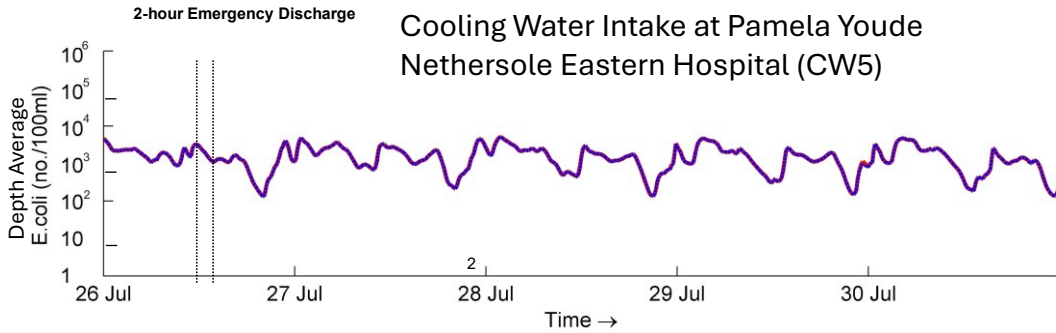
Timeseries Plot for E.coli Top: FW6 Depth-Average; Upper: SW1 Bottom; Lower: SW1 Mid-Depth; Bottom: SW1 Depth-Average Blue: Normal EPP Operation Red: "With 2-hour Emergency Discharge" Scenario		Wet
	CE 40/2023 (CE)	
Binnies	Appendix 5.11i	6



Timeseries Plot for E.coli Top: C6b Bottom; Upper: CR2 Bottom; Lower: C7 Bottom; Bottom: C8 Bottom Blue: Normal EPP Operation Red: "With 2-hour Emergency Discharge" Scenario		Wet
	CE 40/2023 (CE)	
Binnies	Appendix 5.11i	7

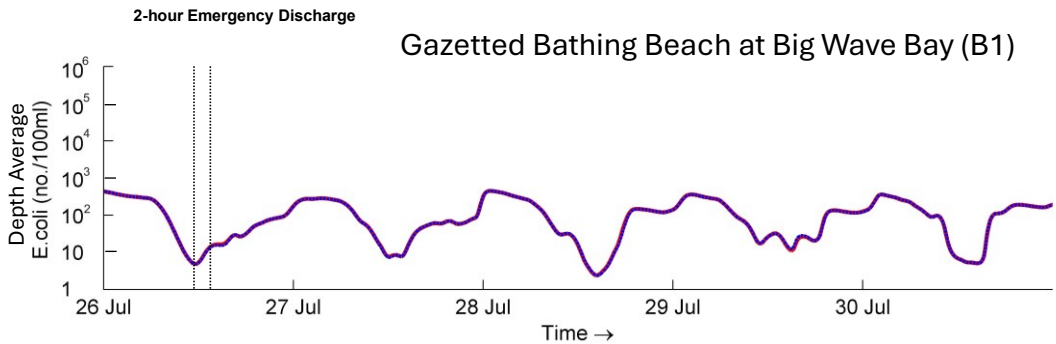


<p>Timeseries Plot for E.coli Top: C19 Bottom; Upper: C20 Bottom; Lower: F1 Depth-Average; Bottom: FW5 Depth-Average Blue: Normal EPP Operation Red: "With 2-hour Emergency Discharge" Scenario</p>		Wet
	CE 40/2023 (CE)	
Binnies	Appendix 5.11i	8



The red line is overlapped with the blue line and maybe not be seen clearly.

No WQO is available



The red line is overlapped with the blue line and maybe not be seen clearly.

WQO: ≤ 180 no. / 100mL for annual geometric mean (March to October)

Timeseries Plot for E.coli
 Top: CW5 Depth-Average; Upper: B1 Depth-Average
 Blue: Normal EPP Operation
 Red: "With 2-hour Emergency Discharge" Scenario

Wet

CE 40/2023 (CE)