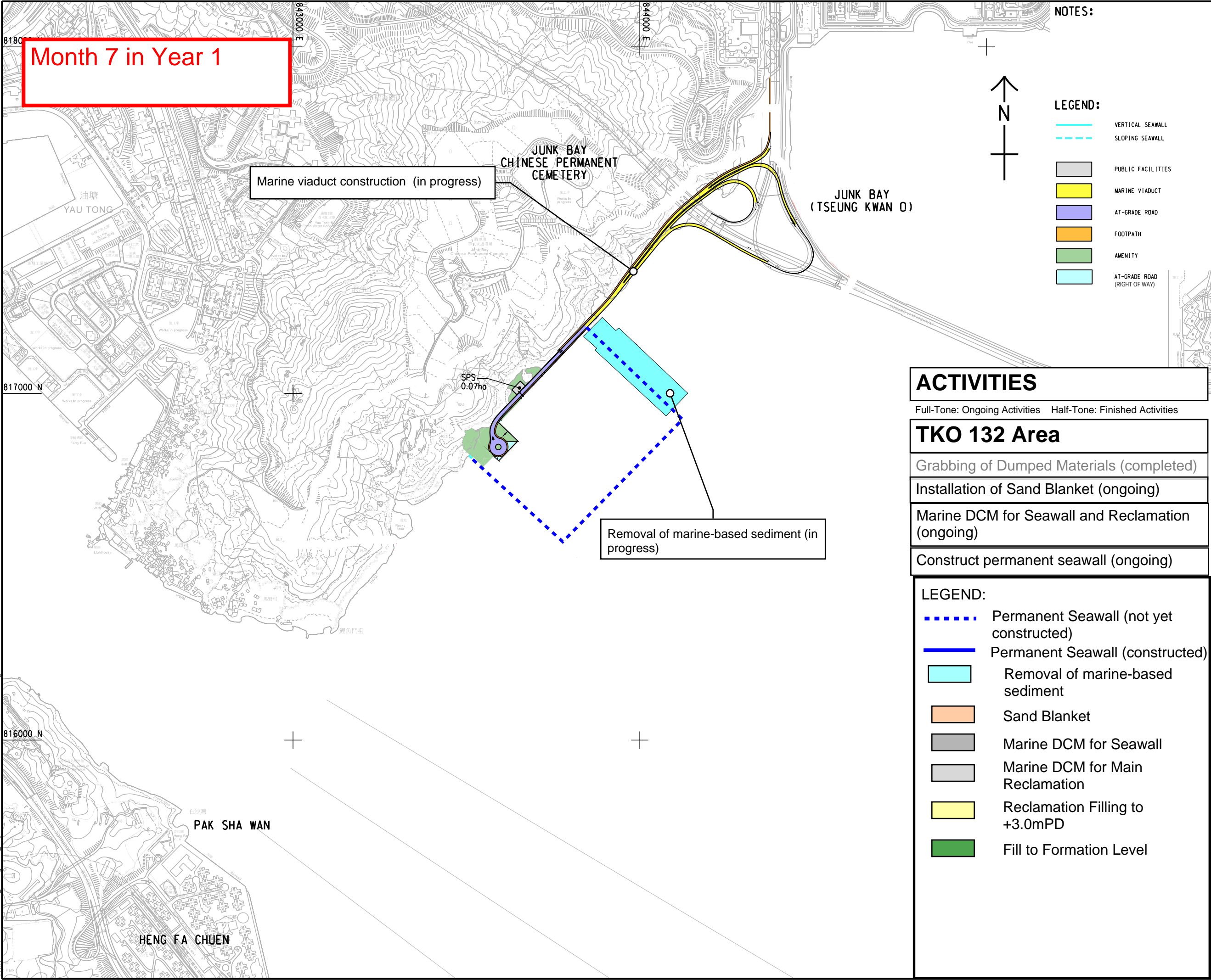


Appendix 5.2

Indicative Reclamation Sequences at TKO 132

ISO A1 594mm x 841mm
 Approved:
 Checked:
 Designer:
 Project Management Initials:
 2024/5/8
 PATH: \\CNCHS1\PP\W002\IG_Drawing\Public - Projects\PROJECTS\0720423\DRAWING\SKETCH\SK1023.dgn



NOTES:

LEGEND:

- VERTICAL SEAWALL
- - - - SLOPING SEAWALL
- PUBLIC FACILITIES
- MARINE VIADUCT
- AT-GRADE ROAD
- FOOTPATH
- AMENITY
- AT-GRADE ROAD (RIGHT OF WAY)

ACTIVITIES

Full-Tone: Ongoing Activities Half-Tone: Finished Activities

TKO 132 Area

- Grabbing of Dumped Materials (completed)
- Installation of Sand Blanket (ongoing)
- Marine DCM for Seawall and Reclamation (ongoing)
- Construct permanent seawall (ongoing)

LEGEND:

- - - - Permanent Seawall (not yet constructed)
- Permanent Seawall (constructed)
- Removal of marine-based sediment
- Sand Blanket
- Marine DCM for Seawall
- Marine DCM for Main Reclamation
- Reclamation Filling to +3.0mPD
- Fill to Formation Level

PROJECT
 DEVELOPMENT OF TSEUNG KWAN O AREA 137 AND ASSOCIATED RECLAMATION SITES – INVESTIGATION, DESIGN AND CONSTRUCTION

CLIENT
 土木工程拓展署
 Civil Engineering and Development Department

CONSULTANT
 AECOM Binnies (TKO137) JV

SUB-CONSULTANTS
 分列工程顧問公司

ISSUE/REVISION

I/R	DATE	DESCRIPTION	CHK.

STATUS

SCALE **DIMENSION UNIT**
 A1 1 : 5000 METRES

KEY PLAN

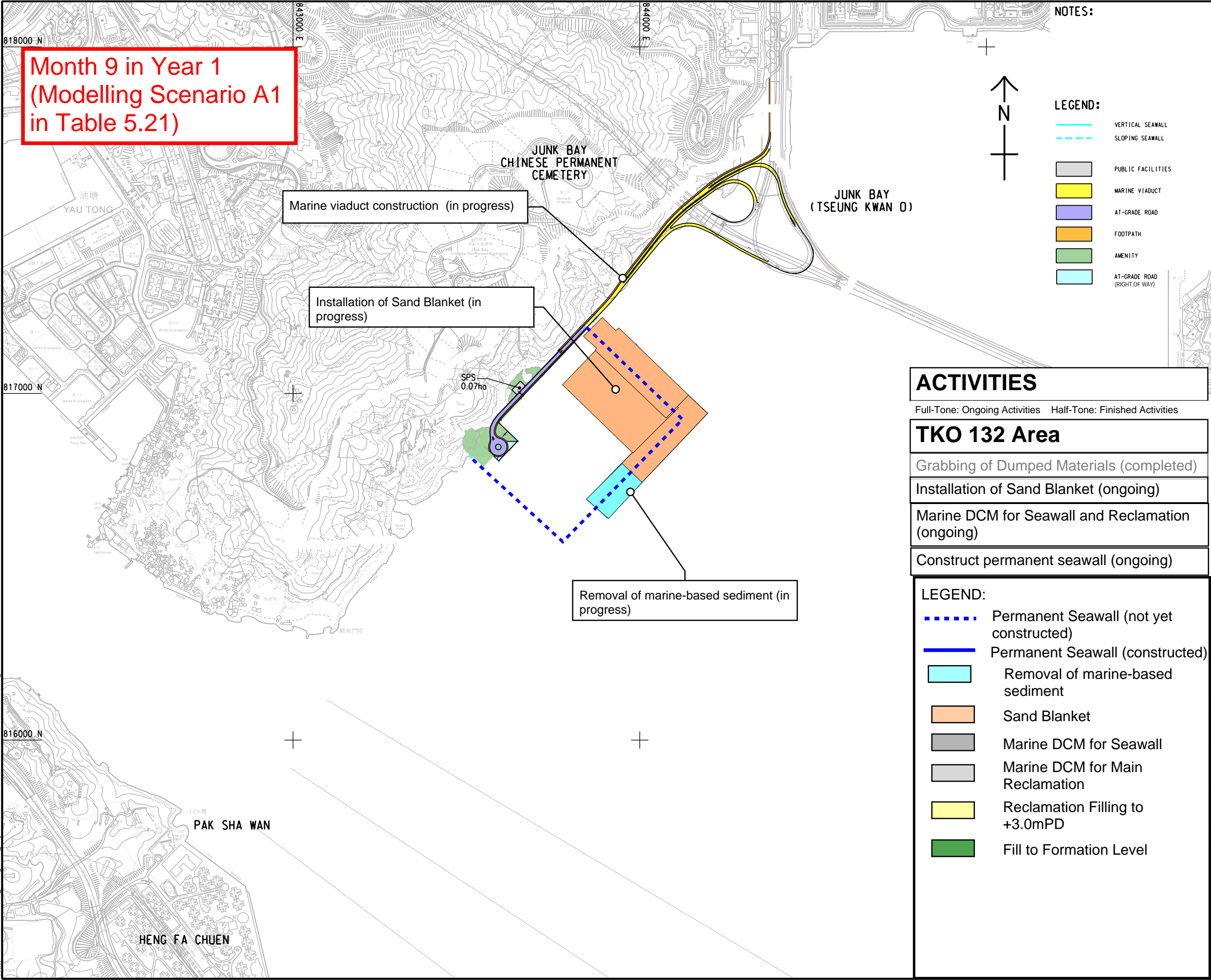
PROJECT NO. **CONTRACT NO.**
 60720423 CE 40/2023(CE)

SHEET TITLE
 PRELIMINARY LAND USE OF LAND TO BE CREATED OFF TKO AREA 132

SHEET NUMBER
 60720423/SK1023

This drawing has been prepared for the use of AECOM Binnies (TKO137) JV and is not to be used, modified, reproduced or relied upon by third parties, except as approved by AECOM Binnies (TKO137) JV or as required by law. AECOM Binnies (TKO137) JV accepts no responsibility, and declines any liability, whatsoever, for any party that uses or relies on this drawing without AECOM Binnies (TKO137) JV's express written consent. All measurements must be obtained from the master dimensions.

ISO A1 594mm x 841mm
 Approved:
 Checked:
 Designer:
 Project Management Initials:
 2024/5/8
 PATH: \\CNCHS1\PP\W002\IG_Drawing\Public - Projects\PROJECTS\0720423\DRAWING\SKETCH\SK1023.dgn



NOTES:

LEGEND:

- VERTICAL SEAWALL
- - - - SLOPING SEAWALL
- PUBLIC FACILITIES
- MARINE VIADUCT
- AT-GRADE ROAD
- FOOTPATH
- AMENITY
- AT-GRADE ROAD (RIGHT OF WAY)

ACTIVITIES

Full-Tone: Ongoing Activities Half-Tone: Finished Activities

TKO 132 Area

- Grabbing of Dumped Materials (completed)
- Installation of Sand Blanket (ongoing)
- Marine DCM for Seawall and Reclamation (ongoing)
- Construct permanent seawall (ongoing)

LEGEND:

- - - - Permanent Seawall (not yet constructed)
- Permanent Seawall (constructed)
- Removal of marine-based sediment
- Sand Blanket
- Marine DCM for Seawall
- Marine DCM for Main Reclamation
- Reclamation Filling to +3.0mPD
- Fill to Formation Level

PROJECT
 DEVELOPMENT OF TSEUNG KWAN O AREA 132 AND ASSOCIATED RECLAMATION SITES
 – INVESTIGATION, DESIGN AND CONSTRUCTION

CLIENT
 土木工程拓展署
CEDD Civil Engineering and Development Department

CONSULTANT
 AECOM Binnies (TKO132) JV

SUB-CONSULTANTS
 分列工程顧問公司

ISSUE/REVISION

NO.	DATE	DESCRIPTION	CHK.

STATUS

SCALE **DIMENSION UNIT**
 A1 1 : 5000 METRES

KEY PLAN

PROJECT NO. **CONTRACT NO.**
 60720423 CE 40/2023(CE)

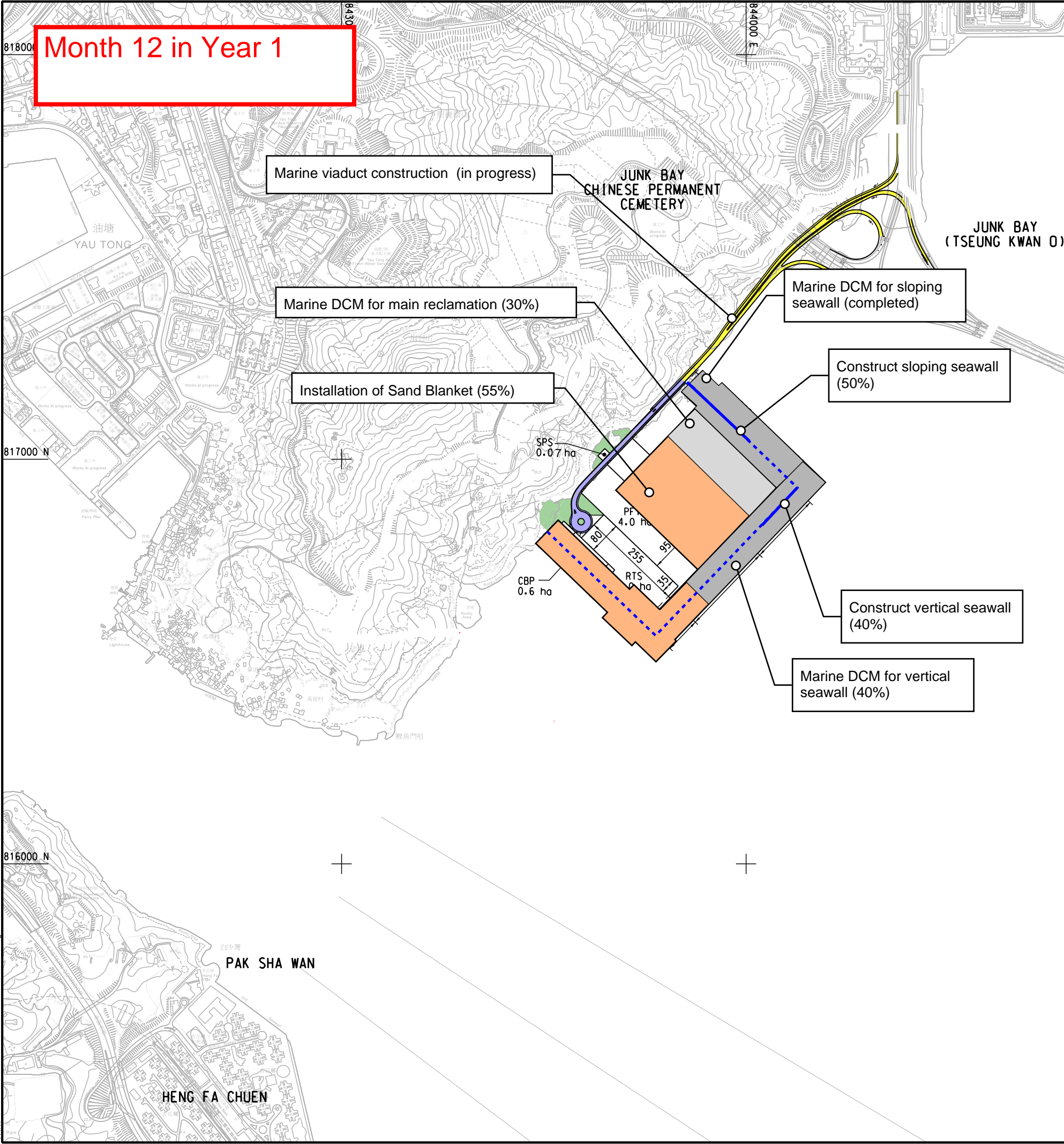
SHEET TITLE
 PRELIMINARY LAND USE OF LAND TO BE CREATED OFF TKO AREA 132

SHEET NUMBER
 60720423/SK1023

This drawing has been prepared for the use of AECOM Binnies (TKO132) JV and is not to be used, modified, reproduced or relied upon by third parties, except as approved by AECOM Binnies (TKO132) JV or as required by law. AECOM Binnies (TKO132) JV accepts no responsibility, and declines any liability, whatsoever, for any party that uses or relies on this drawing without AECOM Binnies (TKO132) JV's express written consent. All measurements must be obtained from the stated dimensions.

ISO A1 594mm x 841mm
 Approved:
 Checked:
 Designer:
 Project Management Initials:
 2024/4/25
 PATH: P:\PROJECTS\60720423\DRAWING\SKETCH\SK1023.dgn
 Pk1 File by: Tsui WY

Month 12 in Year 1



NOTES:
 1. ABBREVIATIONS :
 CBP - CONCRETE BATCHING PLANT
 CWHF - CONSTRUCTION WASTE HANDLING FACILITY
 PTF - PUBLIC FILL TRANSFER FACILITY
 RTS - REFUSE TRANSFER STATION
 EFS - ELECTRICITY FACILITIES

LEGEND:
 [Cyan line] VERTICAL SEAWALL
 [Blue dashed line] SLOPING SEAWALL
 [White box] PUBLIC FACILITIES
 [Yellow box] MARINE VIADUCT
 [Purple box] AT-GRADE ROAD
 [Green box] AMENITY

ACTIVITIES

Full-Tone: Ongoing Activities Half-Tone: Finished Activities

TKO 132 Area

- Grabbing of Dumped Materials (completed)
- Installation of Sand Blanket (ongoing)
- Marine DCM for Seawall and Reclamation (ongoing)
- Construct permanent seawall (ongoing)

LEGEND:
 [Blue dashed line] Permanent Seawall (not yet constructed)
 [Blue solid line] Permanent Seawall (constructed)
 [Cyan box] Removal of marine-based sediment
 [Orange box] Sand Blanket
 [Grey box] Marine DCM for Seawall
 [Light Grey box] Marine DCM for Main Reclamation
 [Yellow box] Reclamation Filling to +3.0mPD
 [Green box] Fill to Formation Level

PROJECT
 DEVELOPMENT OF TSEUNG KWAN O AREA 132 AND ASSOCIATED RECLAMATION SITES - INVESTIGATION, DESIGN AND CONSTRUCTION

CLIENT
 土木工程拓展署
CEDD Civil Engineering and Development Department

CONSULTANT
 AECOM Binnies (TKO132) JV

SUB-CONSULTANTS

ISSUE/REVISION

NO.	DATE	DESCRIPTION	CHK.

STATUS

SCALE
 A1 1 : 5000
DIMENSION UNIT
 METRES

KEY PLAN

PROJECT NO.
 60720423
CONTRACT NO.
 CE 40/2023(CE)

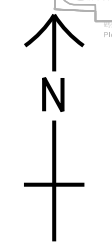
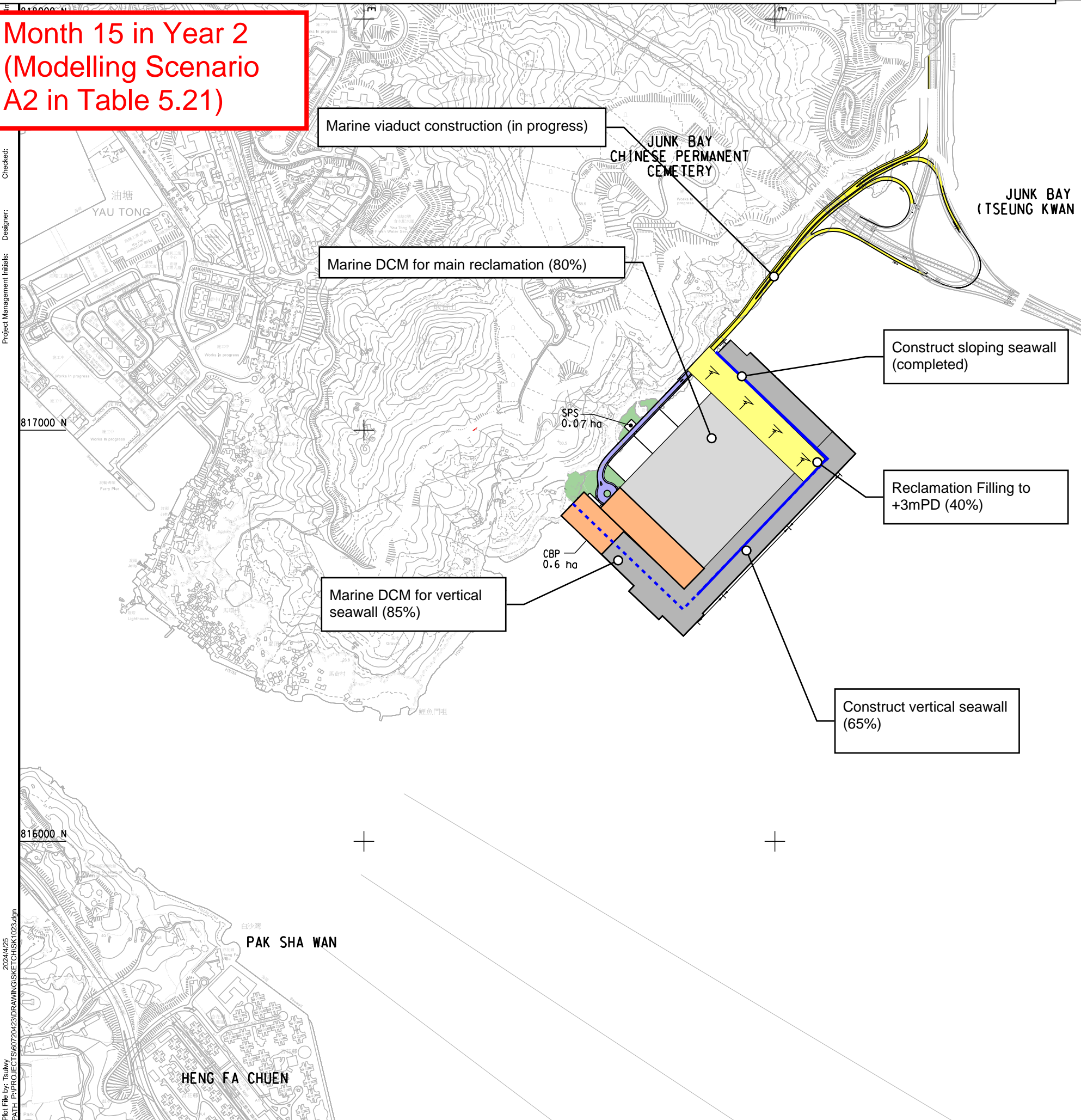
SHEET TITLE
 PRELIMINARY LAND USE OF LAND TO BE CREATED OFF TKO AREA 132

SHEET NUMBER
 60720423/SK1023

This drawing has been prepared for the use of AECOM Binnies (TKO132) JV as a consultant, and does not constitute a contract. It may not be used, modified, reproduced or relied upon by third parties, except as approved by AECOM Binnies (TKO132) JV or as required by law. AECOM Binnies (TKO132) JV accepts no responsibility, and declines any liability, whatsoever, to any party, for uses or relies on this drawing without AECOM Binnies (TKO132) JV's express written consent. Do not scale this document. All measurements must be obtained from the stated dimensions.

TKO 132 Construction Programme and Activities - Half Yearly Snapshots

Month 15 in Year 2
(Modelling Scenario A2 in Table 5.21)



- NOTES:**
1. ABBREVIATIONS :
 - CBP - CONCRETE BATCHING PLANT
 - CWHF - CONSTRUCTION WASTE HANDLING FACILITY
 - PFTF - PUBLIC FILL TRANSFER FACILITY
 - RTS - REFUSE TRANSFER STATION
 - EFS - ELECTRICITY FACILITIES

- LEGEND:**
- VERTICAL SEAWALL
 - - - SLOPING SEAWALL
 - PUBLIC FACILITIES
 - MARINE VIADUCT
 - AT-GRADE ROAD
 - AMENITY

ACTIVITIES

Full-Tone: Ongoing Activities Half-Tone: Finished Activities

TKO 132 Area

- Installation of Sand Blanket (completed)
- Marine DCM for Seawall and Reclamation (Ongoing)
- Construction of Permanent Seawall except marine access (ongoing)
- Reclamation Filling to +3mPD (ongoing)

LEGEND:

- Permanent Seawall (not yet constructed)
- Permanent Seawall (constructed)
- Removal of marine-based sediment
- Sand Blanket
- Marine DCM for Seawall
- Marine DCM for Main Reclamation
- Reclamation Filling to +3.0mPD
- Fill to Formation Level



PROJECT
DEVELOPMENT OF TSEUNG KWAN O AREA 137 AND ASSOCIATED RECLAMATION SITES - INVESTIGATION, DESIGN AND CONSTRUCTION

CLIENT
 **土木工程拓展署
Civil Engineering and Development Department**

CONSULTANT
AECOM Binnies (TKO137) JV

SUB-CONSULTANTS
分册工程顧問公司

ISSUE/REVISION			
REV	DATE	DESCRIPTION	CHK.

STATUS	
REV	DESCRIPTION

SCALE	DIMENSION UNIT
A1 1 : 5000	METRES

KEY PLAN	
REV	DESCRIPTION

PROJECT NO. 60720423 **CONTRACT NO.** CE 40/2023(CE)

SHEET TITLE
PRELIMINARY LAND USE OF LAND TO BE CREATED OFF TKO AREA 132

SHEET NUMBER
60720423/SK1023

Checked:

Designer:

Project Management Initials:

817000 N

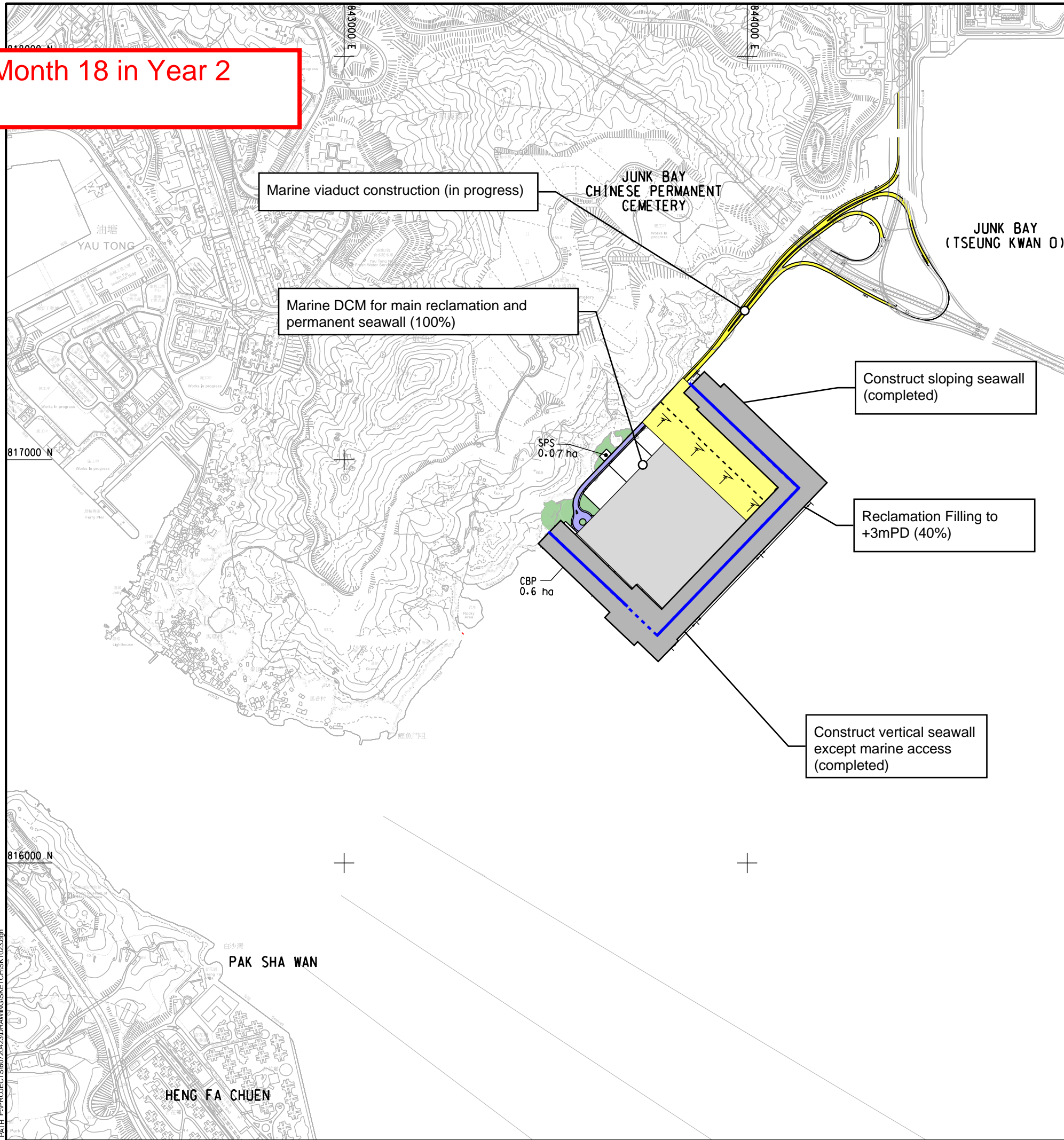
816000 N

Plot File: T:\utility\2024\11\25\PATH\PROJECTS\60720423\DRAWING\SKETCH\SK1023.dgn

This drawing has been prepared for the use of AECOM Binnies (TKO137) JV. It may not be used, modified, reproduced or relied upon by third parties, except as approved by AECOM Binnies (TKO137) JV or as required by law. AECOM Binnies (TKO137) JV accepts no responsibility, and declines any liability, whatsoever, to any party, for uses or relies on this drawing without AECOM Binnies (TKO137) JV's express written consent. Do not scale this document. All measurements must be obtained from the stated dimensions.

Month 18 in Year 2

Plot File by: Tsui Ivy
 PATH: P:\PROJECTS\60720423\DRAWING\SKETCH\SK1023.dgn
 2024/4/25
 Project Management Initials: Designer: Checked: Approver: mm x 841mm



NOTES:

1. ABBREVIATIONS :

- CBP - CONCRETE BATCHING PLANT
- CWHF - CONSTRUCTION WASTE HANDLING FACILITY
- PFTF - PUBLIC FILL TRANSFER FACILITY
- RTS - REFUSE TRANSFER STATION
- EFS - ELECTRICITY FACILITIES

LEGEND:

- VERTICAL SEAWALL
- SLOPING SEAWALL
- PUBLIC FACILITIES
- MARINE VIADUCT
- AT-GRADE ROAD
- AMENITY

ACTIVITIES

Full-Tone: Ongoing Activities Half-Tone: Finished Activities

- TKO 132 Area**
- Installation of Sand Blanket (completed)
 - Marine DCM for Seawall and Reclamation (completed)
 - Construction of Permanent Seawall except marine access (completed)
 - Reclamation Filling to +3mPD (ongoing)

LEGEND:

- Permanent Seawall (not yet constructed)
- Permanent Seawall (constructed)
- Removal of marine-based sediment
- Sand Blanket
- Marine DCM for Seawall
- Marine DCM for Main Reclamation
- Reclamation Filling to +3.0mPD
- Fill to Formation Level

PROJECT
 DEVELOPMENT OF TSEUNG KWAN O AREA 137 AND ASSOCIATED RECLAMATION SITES - INVESTIGATION, DESIGN AND CONSTRUCTION

CLIENT
 土木工程拓展署
CEDD Civil Engineering and Development Department

CONSULTANT
 AECOM Binnies (TKO137) JV

SUB-CONSULTANTS

ISSUE/REVISION

I/R	DATE	DESCRIPTION	CHK.

STATUS

SCALE **DIMENSION UNIT**
 A1 1 : 5000 METRES

KEY PLAN

PROJECT NO. **CONTRACT NO.**
 60720423 CE 40/2023(CE)

SHEET TITLE
 PRELIMINARY LAND USE OF LAND TO BE CREATED OFF TKO AREA 132

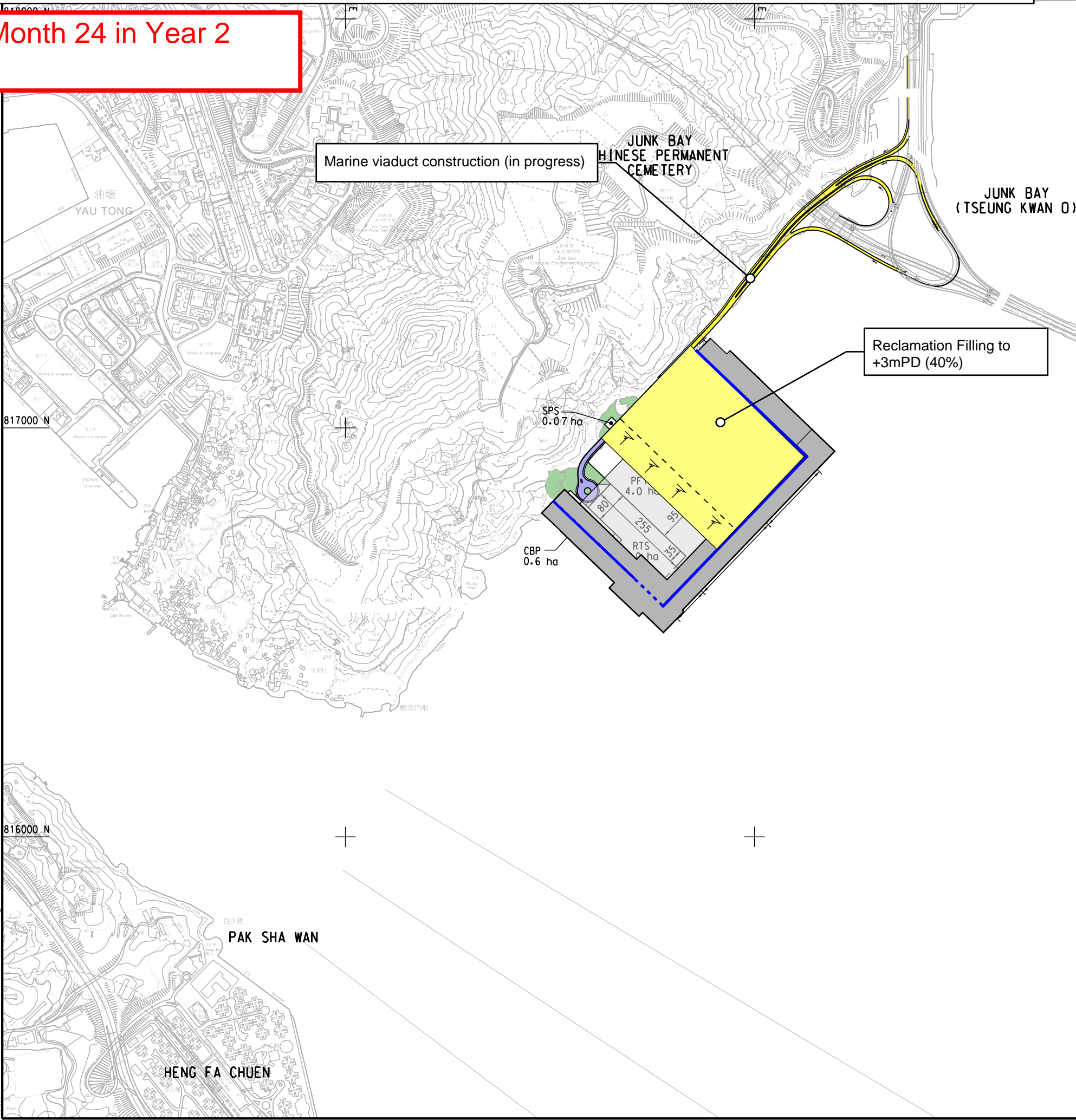
SHEET NUMBER
 60720423/SK1023

This drawing has been prepared for the use of AECOM Binnies (TKO137) JV and is not to be used, modified, reproduced or relied upon by third parties, except as approved by AECOM Binnies (TKO137) JV or as required by law. AECOM Binnies (TKO137) JV or as required by law. AECOM Binnies (TKO137) JV or as required by law. AECOM Binnies (TKO137) JV or as required by law. All measurements must be obtained from the stated dimensions.

TKO 132 Construction Programme and Activities - Half Yearly Snapshots

Month 24 in Year 2

Approve: _____
 Checked: _____
 Designer: _____
 Project Management Initials: _____



- NOTES:**
- ABBREVIATIONS :
 - CBP - CONCRETE BATCHING PLANT
 - CWHF - CONSTRUCTION WASTE HANDLING FACILITY
 - PFTF - PUBLIC FILL TRANSFER FACILITY
 - RTS - REFUSE TRANSFER STATION
 - EFS - ELECTRICITY FACILITIES

- LEGEND:**
- VERTICAL SEAWALL
 - SLOPING SEAWALL
 - PUBLIC FACILITIES
 - MARINE VIADUCT
 - AT-GRADE ROAD
 - AMENITY

ACTIVITIES

Full-Tone: Ongoing Activities Half-Tone: Finished Activities

TKO 132 Area

Construction of Permanent Seawall except marine access (completed)

Reclamation Filling to Intermediate Level +3.0mPD (ongoing)

- LEGEND:**
- Permanent Seawall (not yet constructed)
 - Permanent Seawall (constructed)
 - Removal of marine-based sediment
 - Sand Blanket
 - Marine DCM for Seawall
 - Marine DCM for Main Reclamation
 - Reclamation Filling to +3.0mPD
 - Fill to Formation Level



PROJECT
 DEVELOPMENT OF TSEUNG KWAN O AREA 132 AND ASSOCIATED RECLAMATION SITES - INVESTIGATION, DESIGN AND CONSTRUCTION

CLIENT
 CEDD 土木工程拓展署
 Civil Engineering and Development Department

CONSULTANT
 AECOM Binnies (TKO132) JV

SUB-CONSULTANTS

ISSUE/REVISION

I/R	DATE	DESCRIPTION	CHK.

STATUS

SCALE A1 1 : 5000
DIMENSION UNIT METRES

KEY PLAN

PROJECT NO. 60720423
CONTRACT NO. CE 40/2023(CE)

SHEET TITLE
 PRELIMINARY LAND USE OF LAND TO BE CREATED OFF TKO AREA 132

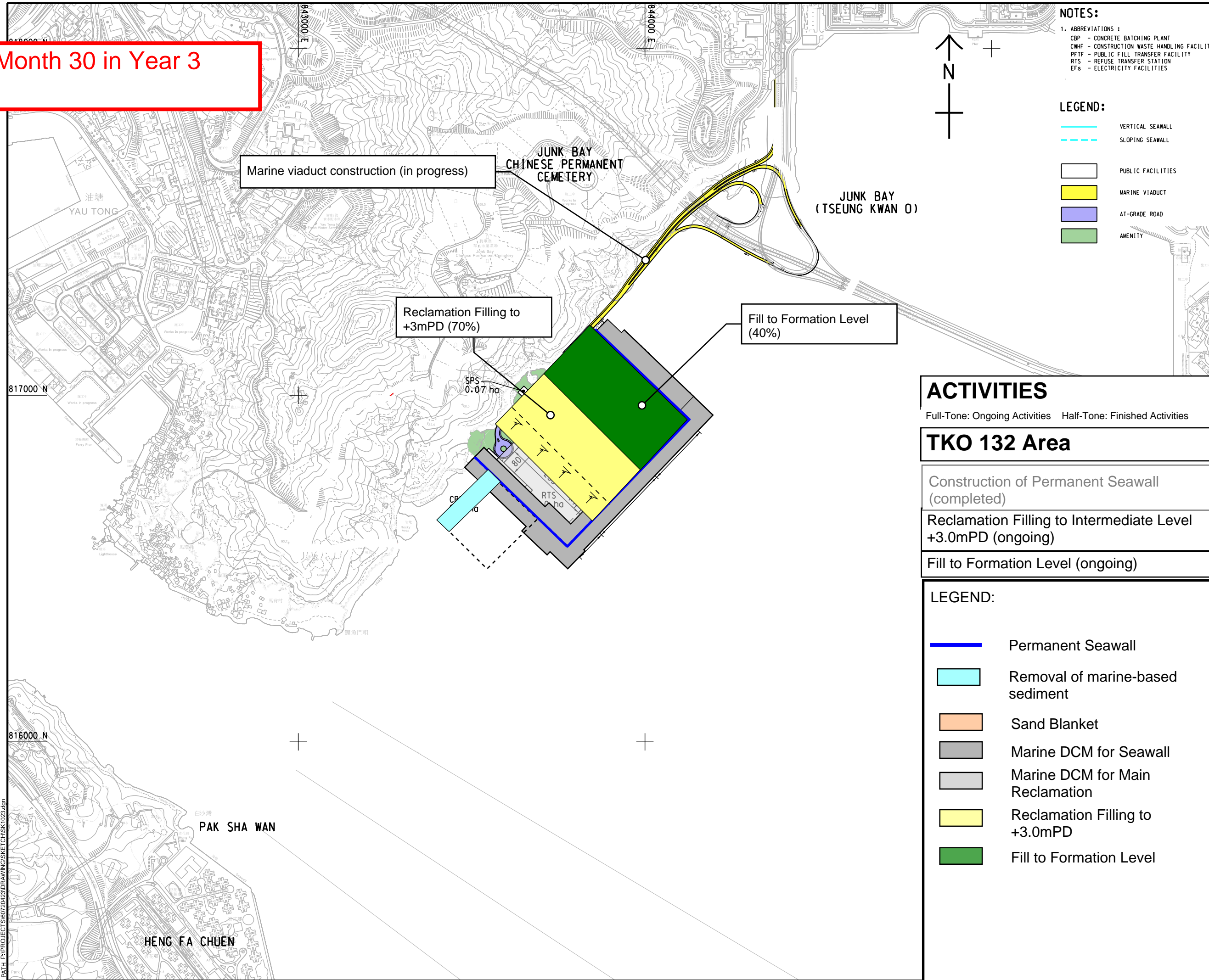
SHEET NUMBER
 60720423/SK1023

Plot File by: Tsui Wai
 PATH: P:\PROJECTS\60720423\DRAWING\SKETCH\SK1023.dgn
 2024/4/25

This drawing has been prepared for the use of AECOM Binnies (TKO132) JV and is not to be used, modified, reproduced or relied upon by third parties, except as approved by AECOM Binnies (TKO132) JV or as required by law. AECOM Binnies (TKO132) JV accepts no responsibility, and disclaims any liability, whatsoever, to any party, for the use or reliance on this drawing without AECOM Binnies (TKO132) JV's express written consent. All measurements must be obtained from the stated dimensions.

Month 30 in Year 3

Plot File by: Tsui Ivy
 PATH: P:\PROJECTS\60720423\DRAWINGS\SKETCH\SK1023.dgn
 2024/4/25
 mm x 841mm
 Approve:
 Checked:
 Designer:
 Project Management Initials:



NOTES:
 1. ABBREVIATIONS :
 CBP - CONCRETE BATCHING PLANT
 CWHF - CONSTRUCTION WASTE HANDLING FACILITY
 PTF - PUBLIC FILL TRANSFER FACILITY
 RTS - REFUSE TRANSFER STATION
 EFS - ELECTRICITY FACILITIES

LEGEND:

- VERTICAL SEAWALL
- SLOPING SEAWALL
- PUBLIC FACILITIES
- MARINE VIADUCT
- AT-GRADE ROAD
- AMENITY

ACTIVITIES

Full-Tone: Ongoing Activities Half-Tone: Finished Activities

TKO 132 Area

Construction of Permanent Seawall (completed)

Reclamation Filling to Intermediate Level +3.0mPD (ongoing)

Fill to Formation Level (ongoing)

LEGEND:

- Permanent Seawall
- Removal of marine-based sediment
- Sand Blanket
- Marine DCM for Seawall
- Marine DCM for Main Reclamation
- Reclamation Filling to +3.0mPD
- Fill to Formation Level

PROJECT
 DEVELOPMENT OF TSEUNG KWAN O AREA 132 AND ASSOCIATED RECLAMATION SITES - INVESTIGATION, DESIGN AND CONSTRUCTION

CLIENT
 土木工程拓展署
 Civil Engineering and Development Department

CONSULTANT
 AECOM Binnies (TKO132) JV

SUB-CONSULTANTS
 分判工程師公司

ISSUE/REVISION

I/R	DATE	DESCRIPTION	CHK.

STATUS

SCALE **DIMENSION UNIT**
 A1 1 : 5000 METRES

KEY PLAN

PROJECT NO. **CONTRACT NO.**
 60720423 CE 40/2023(CE)

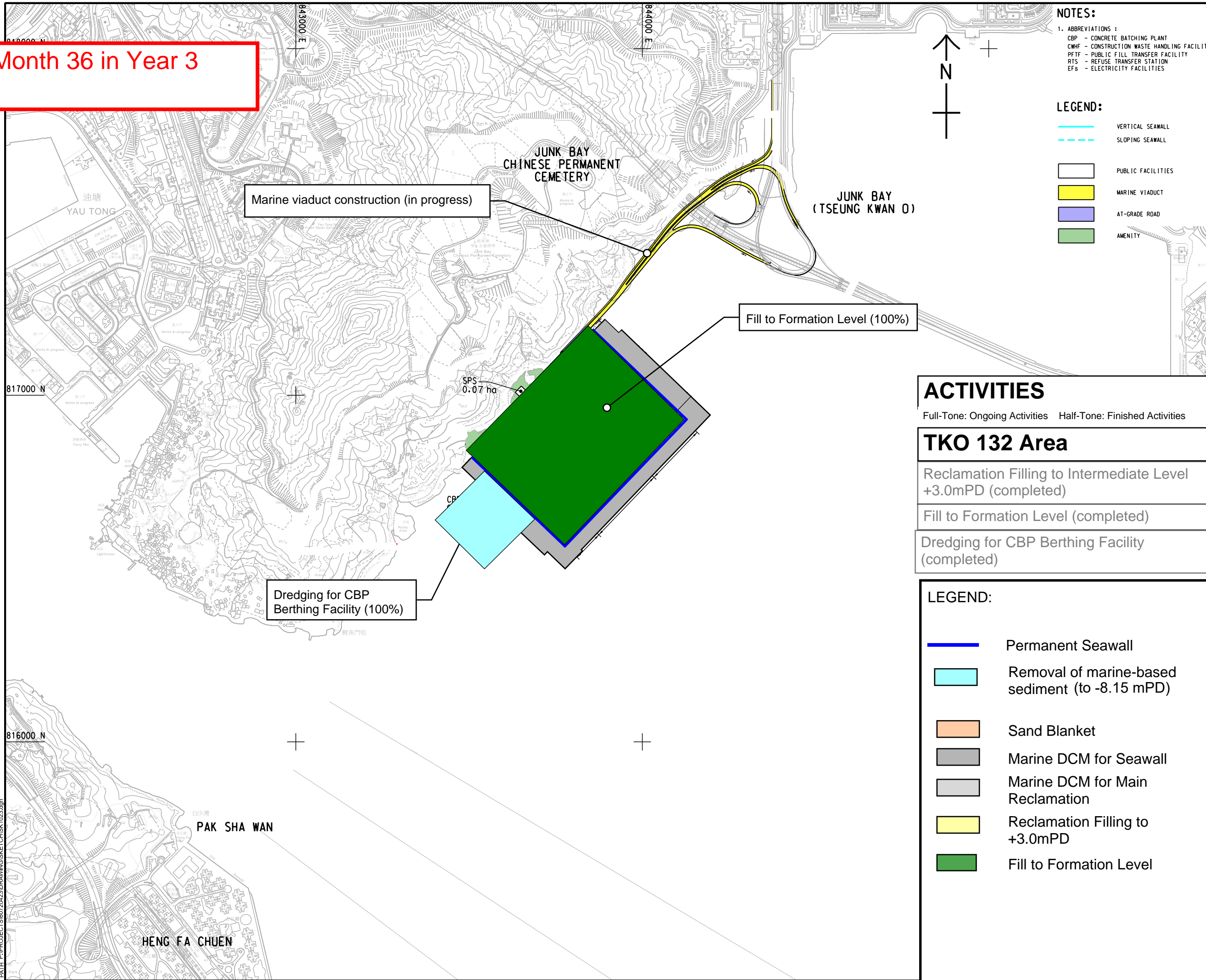
SHEET TITLE
 PRELIMINARY LAND USE OF LAND TO BE CREATED OFF TKO AREA 132

SHEET NUMBER
 60720423/SK1023

This drawing has been prepared for the use of AECOM Binnies (TKO132) JV and its client. It may not be used, modified, reproduced or relied upon by third parties, except as approved by AECOM Binnies (TKO132) JV or as required by law. AECOM Binnies (TKO132) JV accepts no responsibility, and declines any liability, whatsoever, to any party, for uses or relies on this drawing without AECOM Binnies (TKO132) JV's express written consent. Do not scale this document. All measurements must be obtained from the stated dimensions.

Month 36 in Year 3

Plot File by: Tsui Ivy
 PATH: P:\PROJECTS\60720423\DRAWING\SKETCH\SK1023.dgn
 2024/4/25
 mm x 841mm
 Approve:
 Checked:
 Designer:
 Project Management Initials:



NOTES:
 1. ABBREVIATIONS :
 CBP - CONCRETE BATCHING PLANT
 CWHF - CONSTRUCTION WASTE HANDLING FACILITY
 PFTF - PUBLIC FILL TRANSFER FACILITY
 RTS - REFUSE TRANSFER STATION
 EFS - ELECTRICITY FACILITIES

LEGEND:

- VERTICAL SEAWALL
- - - SLOPING SEAWALL
- PUBLIC FACILITIES
- MARINE VIADUCT
- AT-GRADE ROAD
- AMENITY

ACTIVITIES
 Full-Tone: Ongoing Activities Half-Tone: Finished Activities

TKO 132 Area

- Reclamation Filling to Intermediate Level +3.0mPD (completed)
- Fill to Formation Level (completed)
- Dredging for CBP Berthing Facility (completed)

LEGEND:

- Permanent Seawall
- Removal of marine-based sediment (to -8.15 mPD)
- Sand Blanket
- Marine DCM for Seawall
- Marine DCM for Main Reclamation
- Reclamation Filling to +3.0mPD
- Fill to Formation Level

AECOM binnies

PROJECT
 DEVELOPMENT OF TSEUNG KWAN O AREA 137 AND ASSOCIATED RECLAMATION SITES - INVESTIGATION, DESIGN AND CONSTRUCTION

CLIENT
 土木工程拓展署
CEDD Civil Engineering and Development Department

CONSULTANT
 AECOM Binnies (TKO137) JV

SUB-CONSULTANTS
 分判工程師公司

ISSUE/REVISION

I/R	DATE	DESCRIPTION	CHK.

STATUS

SCALE **DIMENSION UNIT**
 A1 1 : 5000 METRES

KEY PLAN

PROJECT NO. **CONTRACT NO.**
 60720423 CE 40/2023(CE)

SHEET TITLE
 PRELIMINARY LAND USE OF LAND TO BE CREATED OFF TKO AREA 132

SHEET NUMBER
 60720423/SK1023

This drawing has been prepared for the use of AECOM Binnies (TKO137) JV and is not to be used, modified, reproduced or relied upon by third parties, except as approved by AECOM Binnies (TKO137) JV or as required by law. AECOM Binnies (TKO137) JV accepts no responsibility, and denies any liability, whatsoever, to any party, for uses or relies on this drawing without AECOM Binnies (TKO137) JV's express written consent. Do not scale this document. All measurements must be obtained from the stated dimensions.