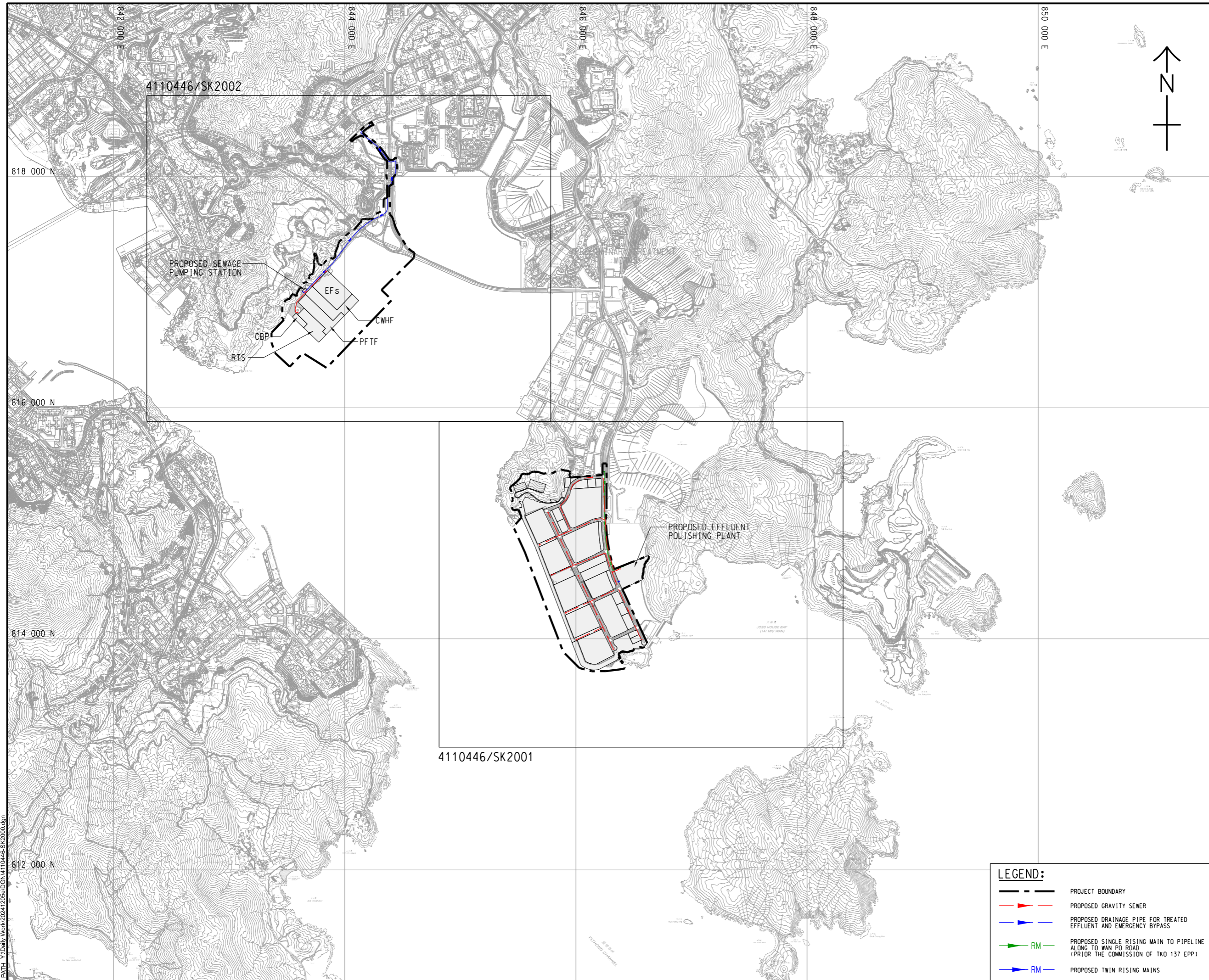


ISO A1 594mm x 841mm
 Approved:
 Checked:
 Designer:
 Project Management Initials:



PROJECT
 DEVELOPMENT OF
 TSEUNG KWAN O AREA 137
 AND ASSOCIATED
 RECLAMATION SITES
 – INVESTIGATION,
 DESIGN AND CONSTRUCTION

CLIENT
 土木工程拓展署
CEDD
 Civil Engineering and
 Development Department

CONSULTANT
 AECOM Binnies (TKO137) JV

SUB-CONSULTANTS

ISSUE/REVISION

I/R	DATE	DESCRIPTION	CHK.

STATUS

SCALE **DIMENSION UNIT**
 A3 1: 30000 METRES

KEY PLAN

PROJECT NO. **CONTRACT NO.**
 4110446 CE 40/2023(CE)

SHEET TITLE
 KEY LOCATION PLAN

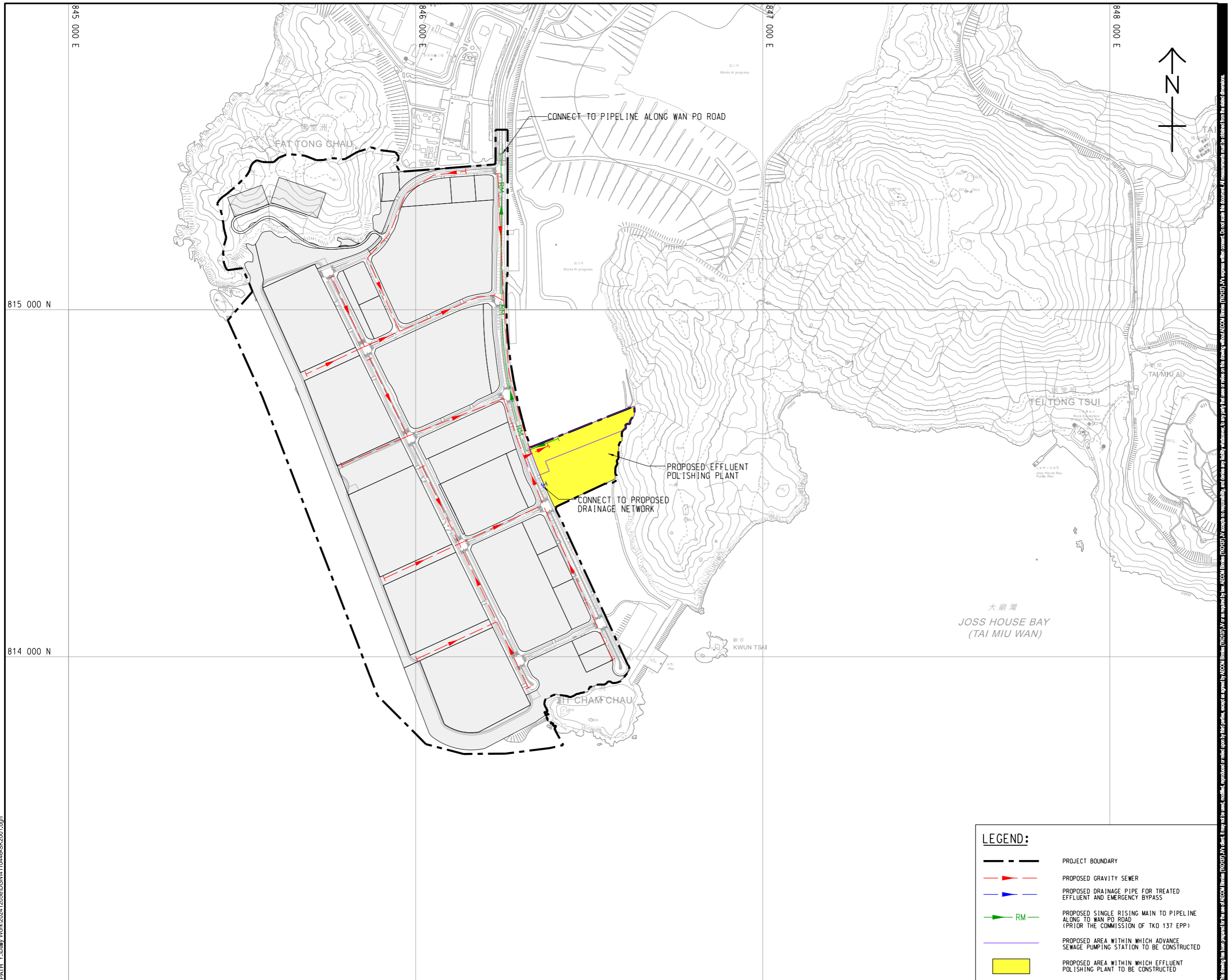
SHEET NUMBER
 4110446/SK2000

LEGEND:

- PROJECT BOUNDARY
- PROPOSED GRAVITY SEWER
- PROPOSED DRAINAGE PIPE FOR TREATED EFFLUENT AND EMERGENCY BYPASS
- PROPOSED SINGLE RISING MAIN TO PIPELINE ALONG TO WAN PO ROAD (PRIOR THE COMMISSION OF TKO 137 EPP)
- PROPOSED TWIN RISING MAINS

12/10/2024
 12/10/2024
 PATH: Y:\Daily Work\2024\2024-1205-IGEN\4110446-SK2000.dgn
 Plot File by: zen10280

This drawing has been prepared for the use of AECOM Binnies (TKO137) JV. It is not to be used, modified, reproduced or relied upon by third parties, except as approved by AECOM Binnies (TKO137) JV or as implied by law. AECOM Binnies (TKO137) JV accepts no responsibility, and denies any liability, whatsoever, to any party, for uses or reliance on this drawing without AECOM Binnies (TKO137) JV's express written consent. Do not scale this document. All measurements must be obtained from the stated dimensions.



ISSUE/REVISION

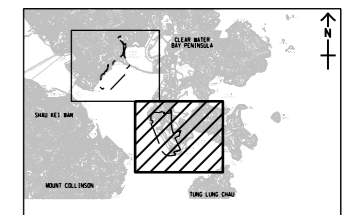
I/R	DATE	DESCRIPTION	CHK.

STATUS

SCALE **DIMENSION UNIT**

A3 1: 10000 METRES

KEY PLAN A3 1: 300000



PROJECT NO. **CONTRACT NO.**

4110446 CE 40/2023(CE)

SHEET TITLE

TKO 137 - PROPOSED
SEWERAGE ALIGNMENT

SHEET NUMBER

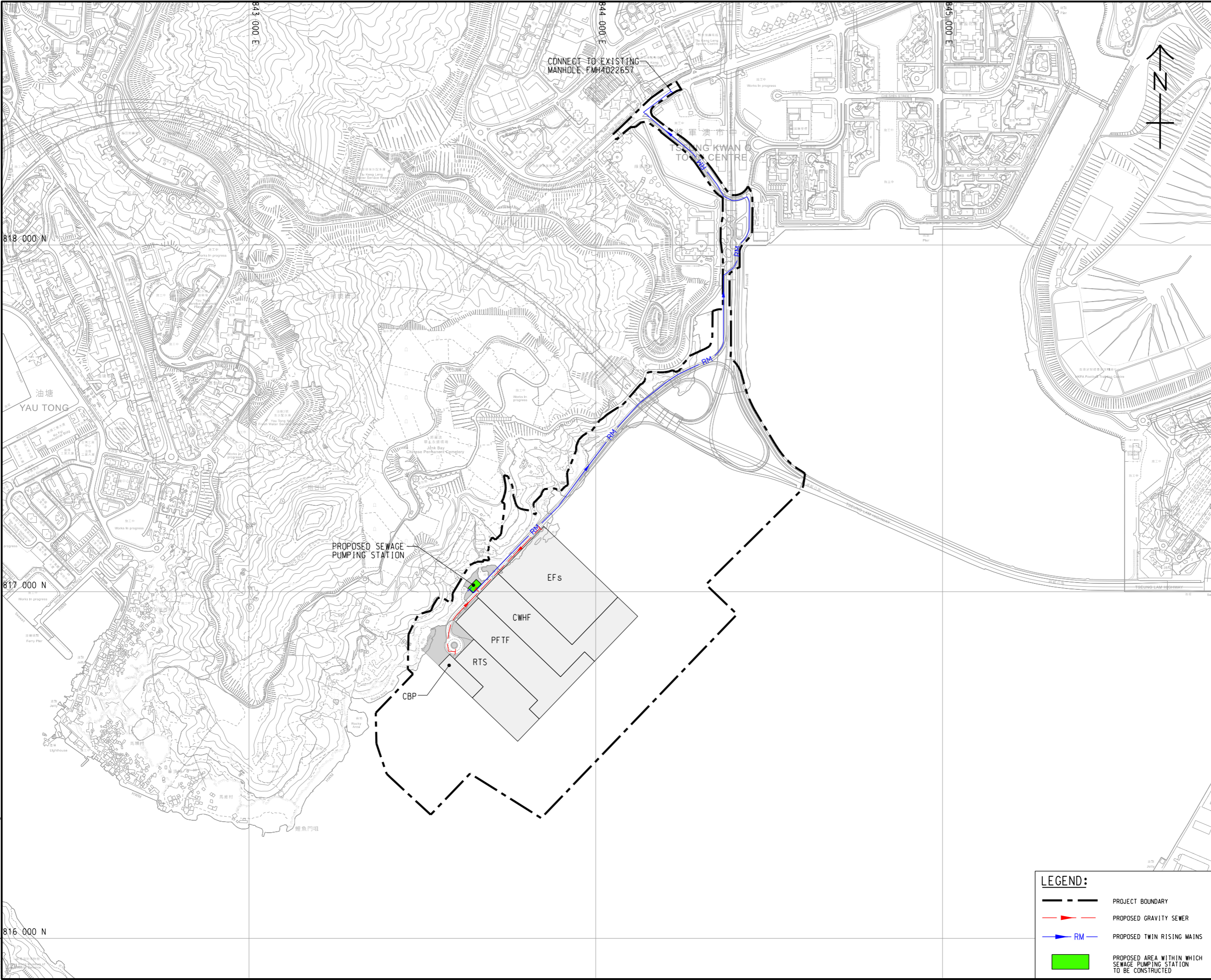
4110446/SK2001

LEGEND:

- PROJECT BOUNDARY
- PROPOSED GRAVITY SEWER
- PROPOSED DRAINAGE PIPE FOR TREATED EFFLUENT AND EMERGENCY BYPASS
- PROPOSED SINGLE RISING MAIN TO PIPELINE ALONG TO WAN PO ROAD (PRIOR THE COMMISSION OF TKO 137 EPP)
- PROPOSED AREA WITHIN WHICH ADVANCE SEWAGE PUMPING STATION TO BE CONSTRUCTED
- PROPOSED AREA WITHIN WHICH EFFLUENT POLISHING PLANT TO BE CONSTRUCTED

This drawing has been prepared for the use of AECOM Binnies (TKO137) JV or as required by law. AECOM Binnies (TKO137) JV accepts no responsibility, and declines any liability, whatsoever, to any party, for uses or relies on this drawing without AECOM Binnies (TKO137) JV's express written consent. Do not scale this document. All measurements must be obtained from the stated dimensions.

ISO A1 594mm x 841mm
 Approved:
 Checked:
 Designer:
 Project Management Initials:
 12/10/2024
 PATH - Daily Work 2024-12-05-12:05-IDGN4110446-SK2002.dgn
 816 000 N



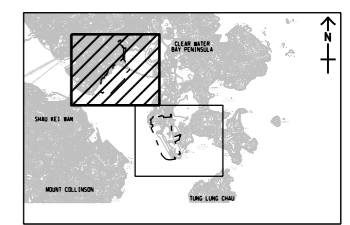
ISSUE/REVISION

I/R	DATE	DESCRIPTION	CHK.

STATUS

SCALE **DIMENSION UNIT**
 A3 1: 10000 METRES

KEY PLAN A3 1: 300000



PROJECT NO. **CONTRACT NO.**
 4110446 CE 40/2023(CE)

SHEET TITLE
 TKO 132 - PROPOSED SEWERAGE ALIGNMENT

SHEET NUMBER
 4110446/SK2002

LEGEND:

- PROJECT BOUNDARY
- PROPOSED GRAVITY SEWER
- PROPOSED TWIN RISING MAINS
- PROPOSED AREA WITHIN WHICH SEWAGE PUMPING STATION TO BE CONSTRUCTED

This drawing has been prepared for the use of AECOM Binnies (TKO137) JV or as required by law. AECOM Binnies (TKO137) JV or as required by law, AECOM Binnies (TKO137) JV, accepts no responsibility, and disavows any liability, whatsoever, to any party, business or other, for any errors, omissions or inaccuracies in this drawing, without AECOM Binnies (TKO137) JV's consent. Do not scale this document. All measurements must be obtained from the stated dimensions.