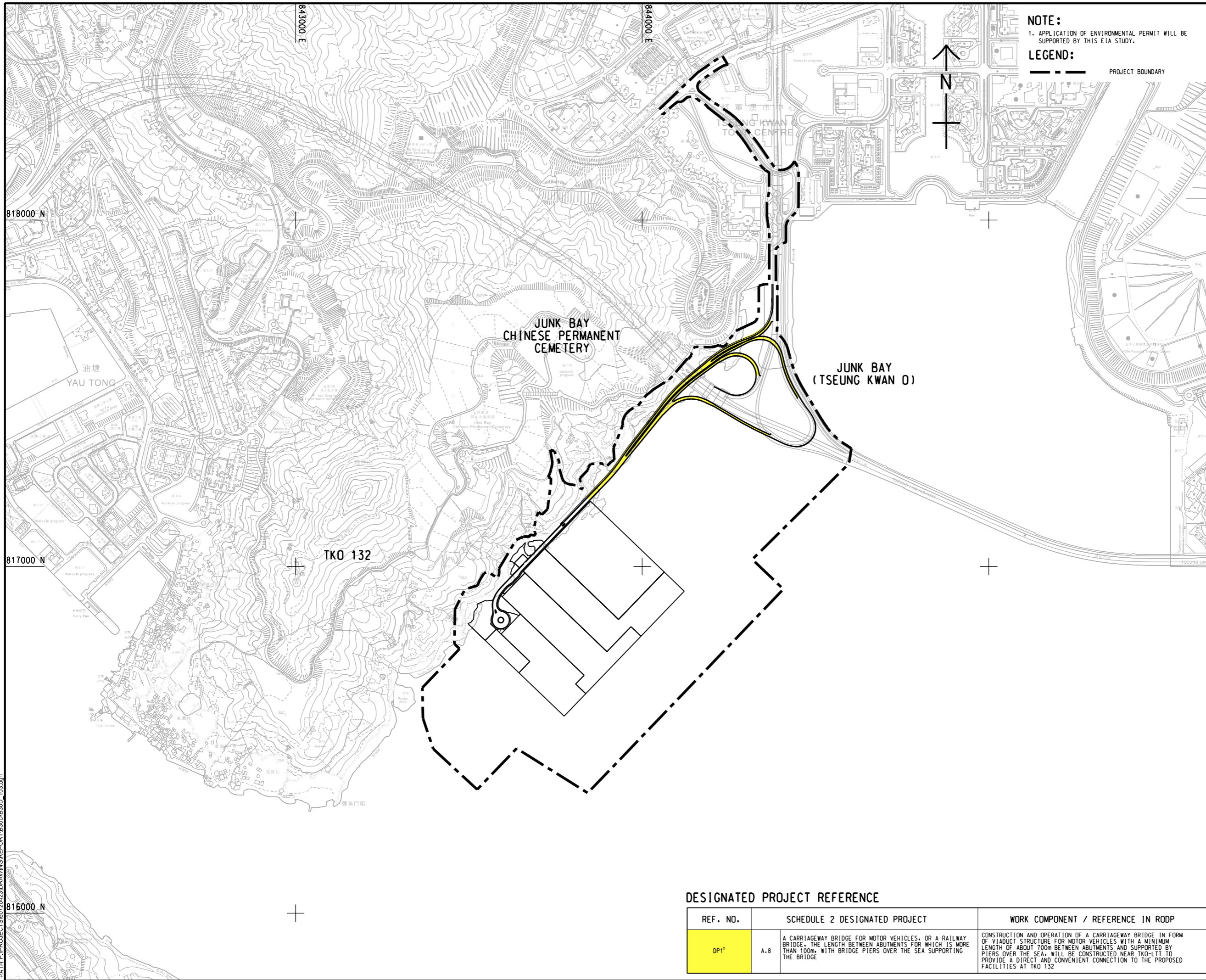
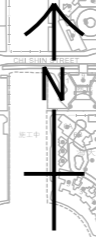


ISO A1 594mm x 841mm
Approved:
Checked:
Designer:
Project Management Initials:



NOTE:
1. APPLICATION OF ENVIRONMENTAL PERMIT WILL BE SUPPORTED BY THIS EIA STUDY.

LEGEND:
--- PROJECT BOUNDARY



PROJECT
DEVELOPMENT OF TSEUNG KWAN O AREA 137 AND ASSOCIATED RECLAMATION SITES - INVESTIGATION, DESIGN AND CONSTRUCTION

CLIENT
CEDD 土木工程拓展署
Civil Engineering and Development Department

CONSULTANT
AECOM Binnies (TKO137) JV

SUB-CONSULTANTS
分判工程師公司

ISSUE/REVISION

NO.	DATE	DESCRIPTION	CHK.

STATUS
NOTE

SCALE
A1 1:5000

DIMENSION UNIT
METRES

KEY PLAN
KEY PLAN

PROJECT NO.
60720423

CONTRACT NO.
CE 40/2023(CE)

SHEET TITLE
LOCATION PLAN OF DESIGNATED PROJECT 1 (DP1) - MARINE VIADUCT

SHEET NUMBER
60720423/B30D/FIGURE A

DESIGNATED PROJECT REFERENCE

REF. NO.	SCHEDULE 2 DESIGNATED PROJECT	WORK COMPONENT / REFERENCE IN RODP
DP1'	A.8	A CARRIAGEWAY BRIDGE FOR MOTOR VEHICLES, OR A RAILWAY BRIDGE, THE LENGTH BETWEEN ABUTMENTS FOR WHICH IS MORE THAN 100m, WITH BRIDGE PIERS OVER THE SEA SUPPORTING THE BRIDGE
		CONSTRUCTION AND OPERATION OF A CARRIAGEWAY BRIDGE IN FORM OF VIADUCT STRUCTURE FOR MOTOR VEHICLES WITH A MINIMUM LENGTH OF ABOUT 700m BETWEEN ABUTMENTS AND SUPPORTED BY PIERS OVER THE SEA, WILL BE CONSTRUCTED NEAR TKO-LTI TO PROVIDE A DIRECT AND CONVENIENT CONNECTION TO THE PROPOSED FACILITIES AT TKO 132

V:\BAK\US5-BAK\CSWP\p1\tdrv\Create PH file\new\CSWP-75\color\p1
Plot File by: Yuez1
2024/12/12
PATH P:\PROJECTS\60720423\DRAWING\REPORT\B30D\B30D_103.dgn

This drawing has been prepared for the use of AECOM Binnies (TKO137) JV and is not to be used, modified, reproduced or relied upon by third parties, except as approved by AECOM Binnies (TKO137) JV or as instructed by the Client. It may not be used, modified, reproduced or relied upon by third parties, except as approved by AECOM Binnies (TKO137) JV or as instructed by the Client. Do not scale this document. All measurements must be obtained from the stated dimensions.