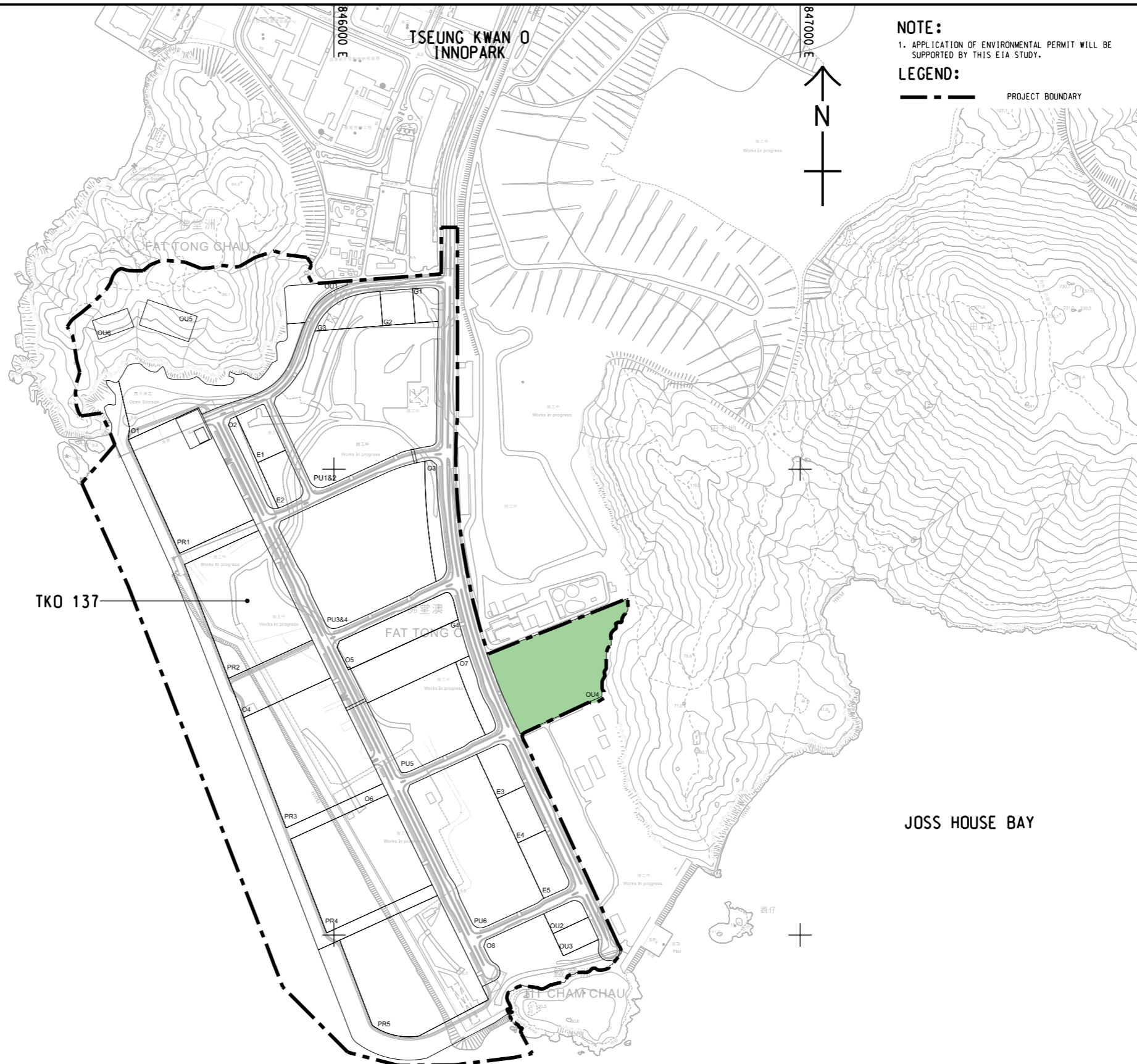


815000 N

845000 E

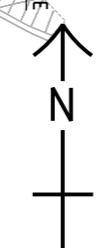
846000 E

847000 E



NOTE:
 1. APPLICATION OF ENVIRONMENTAL PERMIT WILL BE SUPPORTED BY THIS EIA STUDY.

LEGEND:
 - - - - - PROJECT BOUNDARY



PROJECT
 項目
 DEVELOPMENT OF TSEUNG KWAN O AREA 137 AND ASSOCIATED RECLAMATION SITES - INVESTIGATION, DESIGN AND CONSTRUCTION

CLIENT
 業主
 土木工程拓展署
 Civil Engineering and Development Department

CONSULTANT
 工程顧問公司
 AECOM Binnies (TKO137) JV

SUB-CONSULTANTS
 分判工程顧問公司

ISSUE/REVISION
 修訂

I/R	DATE	DESCRIPTION	CHK.

STATUS
 狀態

SCALE **DIMENSION UNIT**
 比例 尺寸單位

A1 1 : 5000 METRES

KEY PLAN
 索引圖

PROJECT NO. **CONTRACT NO.**
 項目編號 合約編號

60720423 CE 40/2023(CE)

SHEET TITLE
 圖紙名稱

LOCATION PLAN OF DESIGNATED PROJECT 3 (DP3) - EFFLUENT POLISHING PLANT

SHEET NUMBER
 圖紙編號

60720423/B30D/FIGURE C

DESIGNATED PROJECT REFERENCE

REF. NO.	SCHEDULE 2 DESIGNATED PROJECT	WORK COMPONENT / REFERENCE IN ROP
DP3 ¹	F.1 SEWAGE TREATMENT WORKS WITH AN INSTALLED CAPACITY OF MORE THAN 15,000m ³ PER DAY	CONSTRUCTION AND OPERATION OF AN EFFLUENT POLISHING PLANT WITH AN INSTALLED CAPACITY OF APPROX. 54,000m ³ PER DAY AT TKO 137 THE EPP IS AROUND 100m FROM THE PLANNED RESIDENTIAL AREA AND AROUND 60m FROM THE PLANNED EDUCATIONAL INSTITUTION AT TKO 137
	F.2 SEWAGE TREATMENT WORKS (A) WITH AN INSTALLED CAPACITY OF MORE THAN 5,000m ³ PER DAY; AND (B) A BOUNDARY OF WHICH IS LESS THAN 200m FROM THE NEAREST BOUNDARY OF AN EXISTING OR PLANNED (1) RESIDENTIAL AREA AND (11) EDUCATIONAL INSTITUTION	

This drawing has been prepared for the use of AECOM Binnies (TKO137) JV and is not to be used, modified, reproduced or relied upon by third parties, except as approved by AECOM Binnies (TKO137) JV or as instructed by the AECOM Binnies (TKO137) JV. All measurements must be obtained from the stated dimensions.