

816000 N

815000 N

814000 N

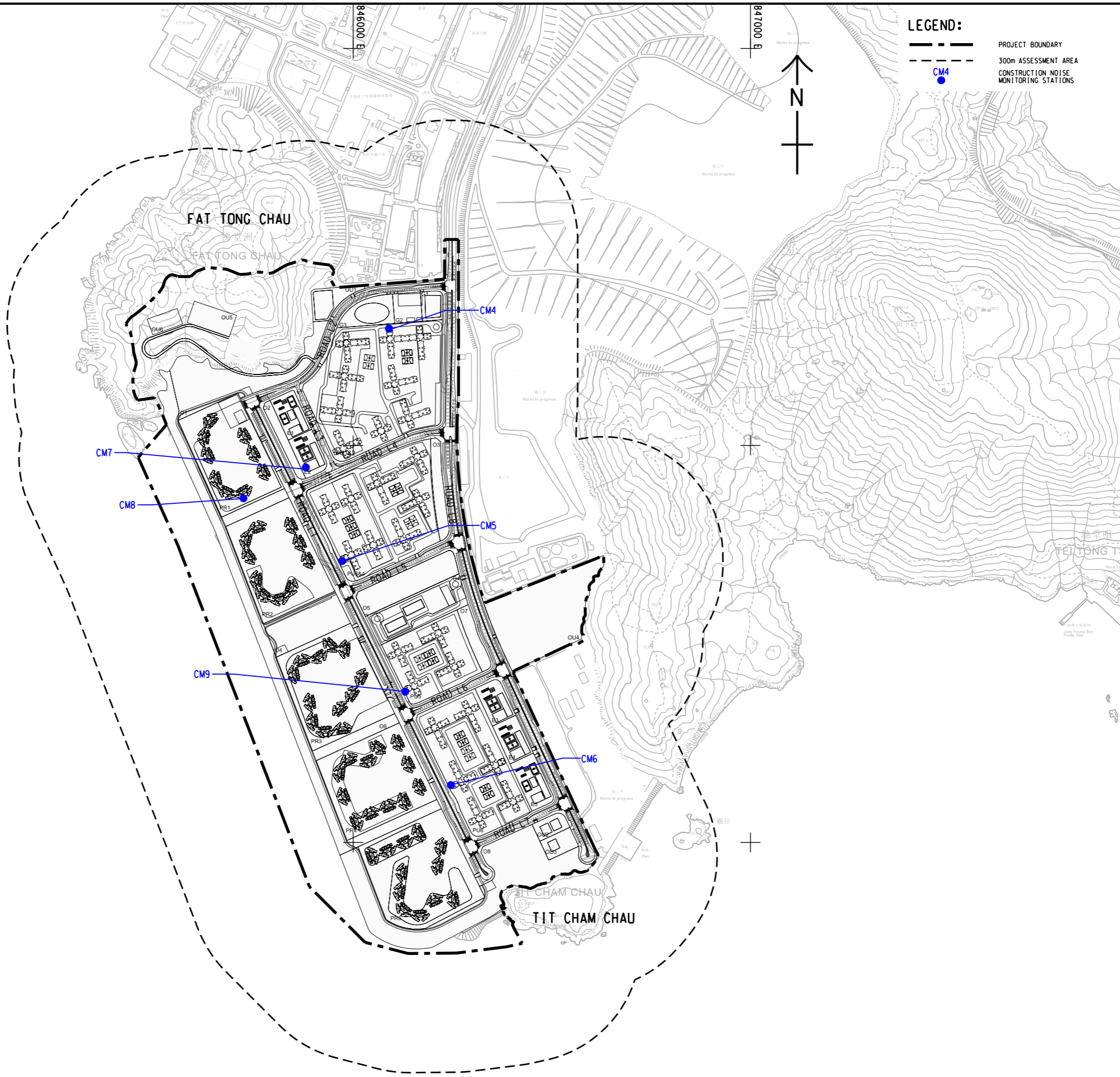
845000 E

846000 E

847000 E

814000 N

MAN



**LEGEND:**

- PROJECT BOUNDARY
- 300m ASSESSMENT AREA
- CONSTRUCTION NOISE MONITORING STATIONS



**PROJECT**  
 DEVELOPMENT OF TSEUNG KWAN O AREA 137 AND ASSOCIATED RECLAMATION SITES – INVESTIGATION, DESIGN AND CONSTRUCTION

**CLIENT**  
 土木工程拓展署  
 Civil Engineering and Development Department

**CONSULTANT**  
 AECOM Binnies (TKO137) JV

**SUB-CONSULTANTS**

**ISSUE/REVISION**

I/R	DATE	DESCRIPTION	CHK.

**STATUS**

**SCALE**                      **DIMENSION UNIT**  
 A1 1 : 5000                      METRES

**KEY PLAN**

**PROJECT NO.**                      **CONTRACT NO.**  
 60720423                              CE 40/2023(CE)

**SHEET TITLE**  
 LOCATIONS OF CONSTRUCTION NOISE MONITORING STATIONS AT TKO 137

**SHEET NUMBER**  
 60720423/B30B/FIGURE 3.2

This drawing has been prepared for the use of AECOM Binnies (TKO137) JV as client. It may not be used, modified, reproduced or relied upon by third parties, except as approved by AECOM Binnies (TKO137) JV or as required by law. AECOM Binnies (TKO137) JV or its employees, agents, subcontractors, consultants, or any party, shall accept no responsibility, and neither AECOM Binnies (TKO137) JV nor its employees, agents, subcontractors, consultants, or any party, shall be liable, whatsoever, to any party, for loss or damage of any kind, including consequential or special damages, arising out of or in connection with the use of this drawing, without AECOM Binnies (TKO137) JV's express written consent. Do not scale this document. All measurements must be obtained from the stated dimensions.