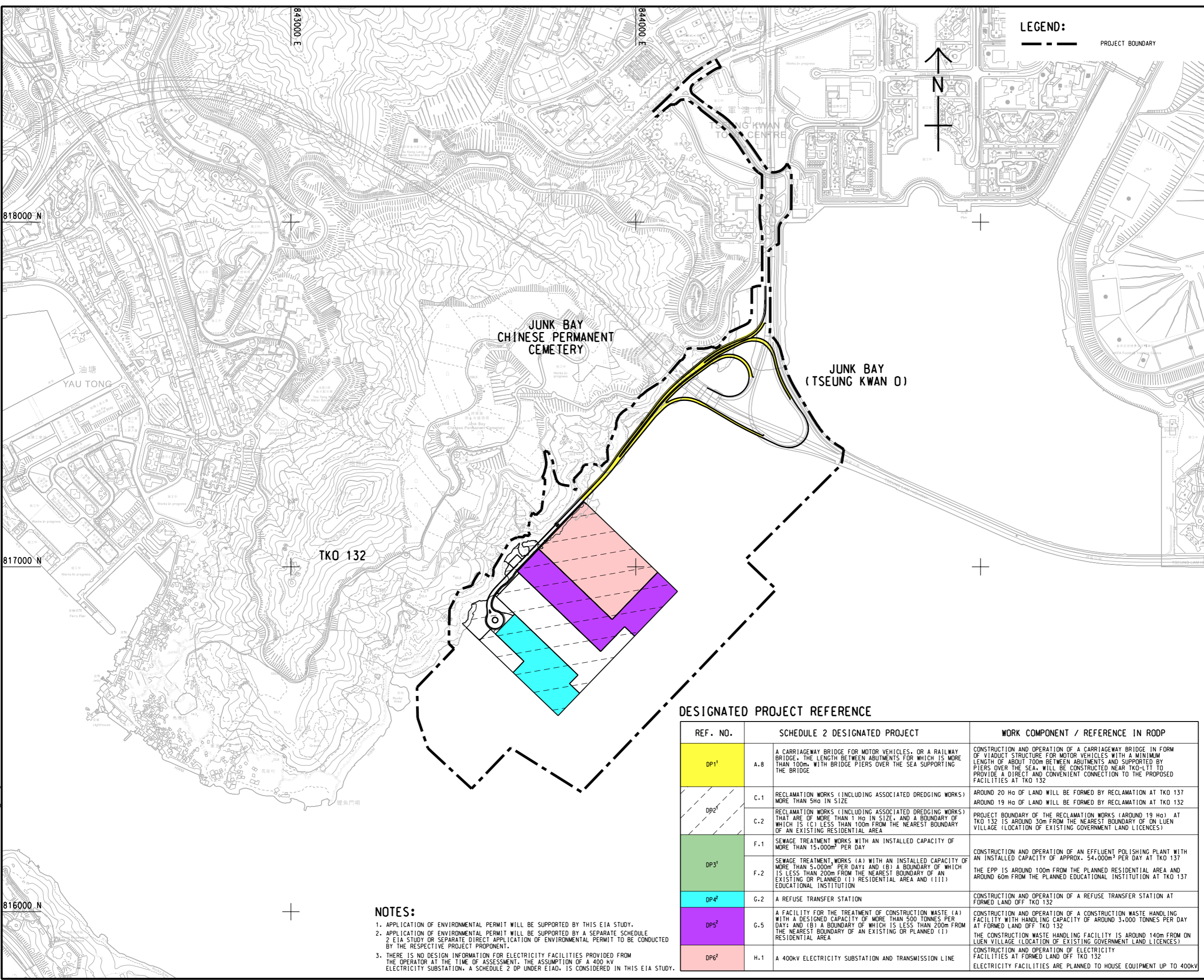


V:\BAK\US55-BAK\CSWP\p1dtdrv\Create PH file\new\CSWP-75\color\pht
 Plot File Dr: Yanz1
 2024/12/12
 PATH P:\PROJECTS\672023\DRAWING\REPORT\B30\B30_101.dgn



LEGEND:
 - - - - - PROJECT BOUNDARY



PROJECT
 項目
 DEVELOPMENT OF
 TSEUNG KWAN O AREA 137
 AND ASSOCIATED
 RECLAMATION SITES
 - INVESTIGATION,
 DESIGN AND CONSTRUCTION

CLIENT
 業主
土木工程拓展署
**Civil Engineering and
 Development Department**

CONSULTANT
 工程師公司
 AECOM Binnie (TKO137) JV

SUB-CONSULTANTS
 分判工程師公司

ISSUE/REVISION			
修訂			
IR	DATE	DESCRIPTION	CHK.
修訂	日期	修訂詳情	核對

STATUS
 狀態

SCALE
 比例尺
 A1 1:5000

DIMENSION UNIT
 尺寸單位
 METRES

KEY PLAN
 索引圖

PROJECT NO.
 項目編號
 60720423

CONTRACT NO.
 合約編號
 CE 40/2023(CE)

SHEET TITLE
 圖紙名稱
 LOCATION OF DESIGNATED
 PROJECTS

SHEET NUMBER
 圖紙編號
 60720423/B30/FIGURE 2.4

DESIGNATED PROJECT REFERENCE

REF. NO.	SCHEDULE 2 DESIGNATED PROJECT	WORK COMPONENT / REFERENCE IN RODP
DP1 ¹	A.8 A CARRIAGEWAY BRIDGE FOR MOTOR VEHICLES, OR A RAILWAY BRIDGE, THE LENGTH BETWEEN ABUTMENTS FOR WHICH IS MORE THAN 100m, WITH BRIDGE PIERS OVER THE SEA SUPPORTING THE BRIDGE	CONSTRUCTION AND OPERATION OF A CARRIAGEWAY BRIDGE IN FORM OF VIADUCT STRUCTURE FOR MOTOR VEHICLES WITH A MINIMUM LENGTH OF ABOUT 700m BETWEEN ABUTMENTS AND SUPPORTED BY PIERS OVER THE SEA, WILL BE CONSTRUCTED NEAR TKO-LTT TO PROVIDE A DIRECT AND CONVENIENT CONNECTION TO THE PROPOSED FACILITIES AT TKO 132
DP2 ²	C.1 RECLAMATION WORKS (INCLUDING ASSOCIATED DREDGING WORKS) MORE THAN 5ha IN SIZE	AROUND 20 Ha OF LAND WILL BE FORMED BY RECLAMATION AT TKO 137 AROUND 19 Ha OF LAND WILL BE FORMED BY RECLAMATION AT TKO 132
	C.2 RECLAMATION WORKS (INCLUDING ASSOCIATED DREDGING WORKS) THAT ARE OF MORE THAN 1 ha IN SIZE, AND A BOUNDARY OF WHICH IS (C) LESS THAN 100m FROM THE NEAREST BOUNDARY OF AN EXISTING RESIDENTIAL AREA	PROJECT BOUNDARY OF THE RECLAMATION WORKS (AROUND 19 Ha) AT TKO 132 IS AROUND 30m FROM THE NEAREST BOUNDARY OF ON LUEN VILLAGE (LOCATION OF EXISTING GOVERNMENT LAND LICENCES)
DP3 ³	F.1 SEWAGE TREATMENT WORKS WITH AN INSTALLED CAPACITY OF MORE THAN 15,000m ³ PER DAY	CONSTRUCTION AND OPERATION OF AN EFFLUENT POLISHING PLANT WITH AN INSTALLED CAPACITY OF APPROX. 54,000m ³ PER DAY AT TKO 137
	F.2 SEWAGE TREATMENT WORKS (A) WITH AN INSTALLED CAPACITY OF MORE THAN 5,000m ³ PER DAY; AND (B) A BOUNDARY OF WHICH IS LESS THAN 200m FROM THE NEAREST BOUNDARY OF AN EXISTING OR PLANNED (I) RESIDENTIAL AREA AND (II) EDUCATIONAL INSTITUTION	THE EPP IS AROUND 100m FROM THE PLANNED RESIDENTIAL AREA AND AROUND 60m FROM THE PLANNED EDUCATIONAL INSTITUTION AT TKO 137
DP4 ⁴	G.2 A REFUSE TRANSFER STATION	CONSTRUCTION AND OPERATION OF A REFUSE TRANSFER STATION AT FORMED LAND OFF TKO 132
DP5 ⁵	G.5 A FACILITY FOR THE TREATMENT OF CONSTRUCTION WASTE (A) WITH A DESIGNED CAPACITY OF MORE THAN 500 TONNES PER DAY; AND (B) A BOUNDARY OF WHICH IS LESS THAN 200m FROM THE NEAREST BOUNDARY OF AN EXISTING OR PLANNED (I) RESIDENTIAL AREA	CONSTRUCTION AND OPERATION OF A CONSTRUCTION WASTE HANDLING FACILITY WITH HANDLING CAPACITY OF AROUND 3,000 TONNES PER DAY AT FORMED LAND OFF TKO 132 THE CONSTRUCTION WASTE HANDLING FACILITY IS AROUND 140m FROM ON LUEN VILLAGE (LOCATION OF EXISTING GOVERNMENT LAND LICENCES)
DP6 ⁶	H.1 A 400kV ELECTRICITY SUBSTATION AND TRANSMISSION LINE	CONSTRUCTION AND OPERATION OF ELECTRICITY FACILITIES AT FORMED LAND OFF TKO 132 ELECTRICITY FACILITIES ARE PLANNED TO HOUSE EQUIPMENT UP TO 400kV

NOTES:

- APPLICATION OF ENVIRONMENTAL PERMIT WILL BE SUPPORTED BY THIS EIA STUDY.
- APPLICATION OF ENVIRONMENTAL PERMIT WILL BE SUPPORTED BY A SEPARATE SCHEDULE 2 EIA STUDY OR SEPARATE DIRECT APPLICATION OF ENVIRONMENTAL PERMIT TO BE CONDUCTED BY THE RESPECTIVE PROJECT PROPONENT.
- THERE IS NO DESIGN INFORMATION FOR ELECTRICITY FACILITIES PROVIDED FROM THE OPERATOR AT THE TIME OF ASSESSMENT. THE ASSUMPTION OF A 400 kV ELECTRICITY SUBSTATION, A SCHEDULE 2 DP UNDER EIAO, IS CONSIDERED IN THIS EIA STUDY.

This drawing has been prepared for the use of AECOM Binnie (TKO137) JV and its sub-consultants. It may not be used, modified, reproduced or relied upon by third parties, except as approved by AECOM Binnie (TKO137) JV or as instructed by the client. AECOM Binnie (TKO137) JV or its sub-consultants accept no responsibility, and disavow any liability whatsoever, to any party, for losses or claims on this drawing without AECOM Binnie (TKO137) JV's express written consent. Do not scale this document. All measurements must be obtained from the stated dimensions.